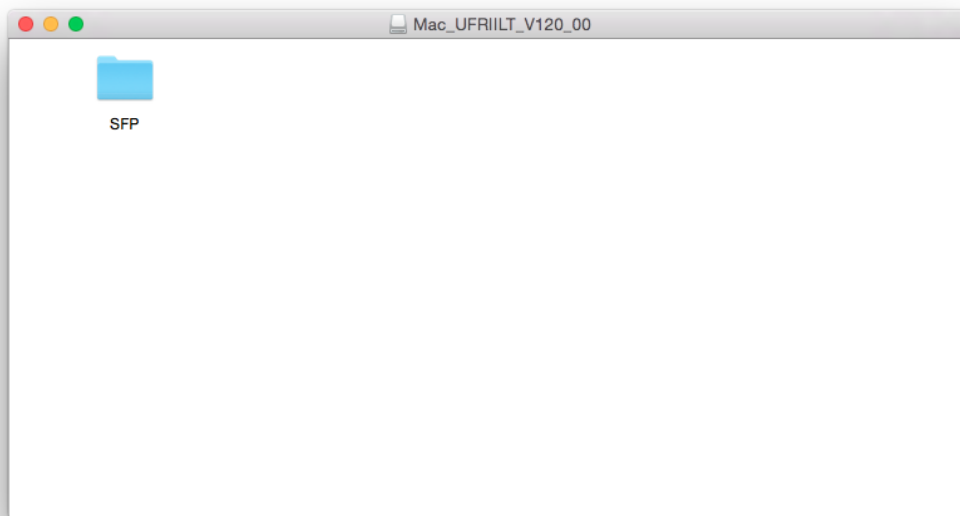


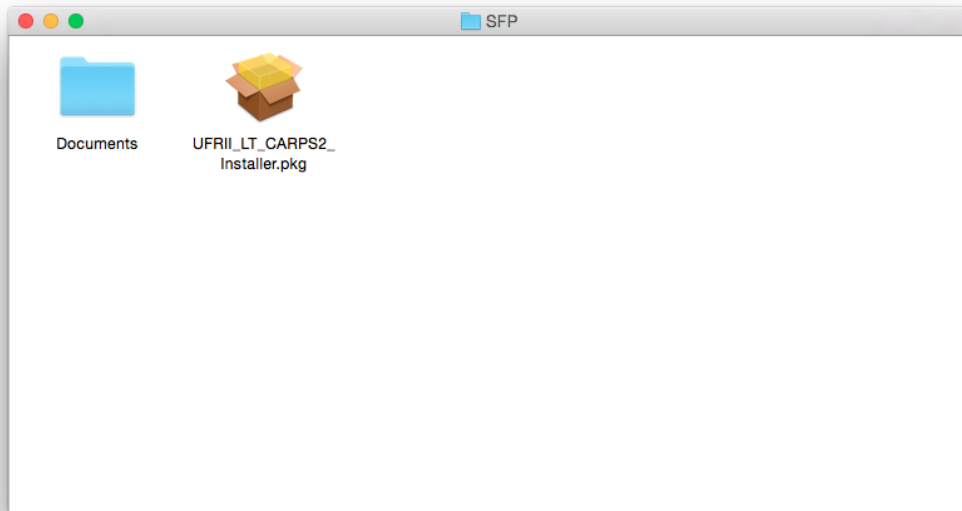
LBP6030w 安裝 Mac 透過 USB 連線連接印表機之驅動程式步驟

****注意: 安裝驅動程式前請勿接駁 USB 線，以免系統發生錯誤****

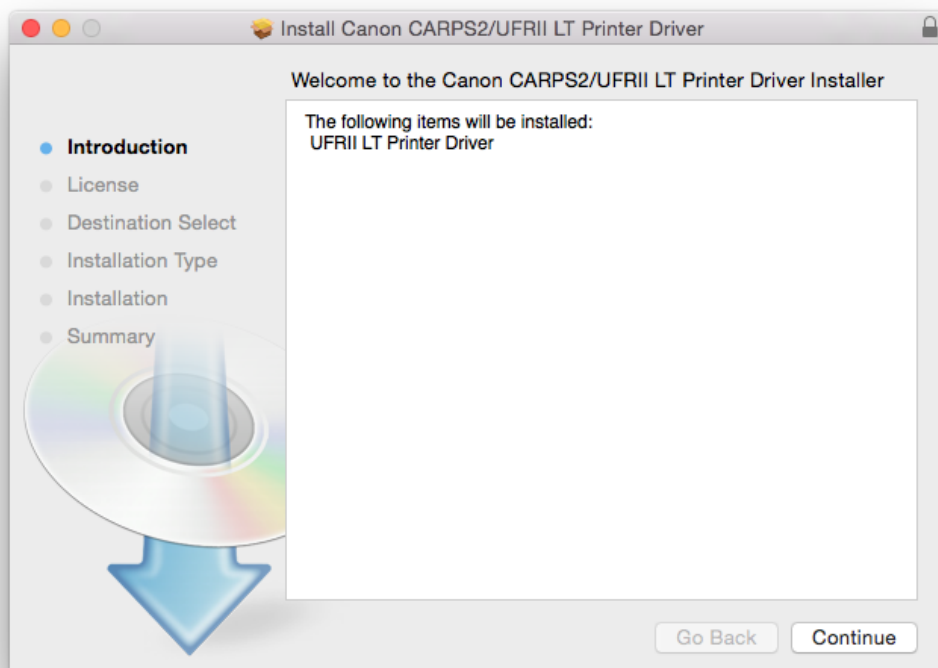
1. 到以下佳能網站下載印表機的驅動程式
Go to below Canon web and download the printer driver
https://hk.canon/en/support/imageCLASS%20LBP6030_%20LBP6030B_%20LBP6030w/model
2. 選擇並下載以下檔案
Choose and download below files:
 - 打印機驅動程式 / Printer Driver
[Mac] UFR II LT Printer Driver Ver.x.x.x
3. 開啟下載檔案「UFR II LT Printer Driver」，進入「SFP」文件夾
Open “UFR II LT Printer Driver”, then open “SFP”



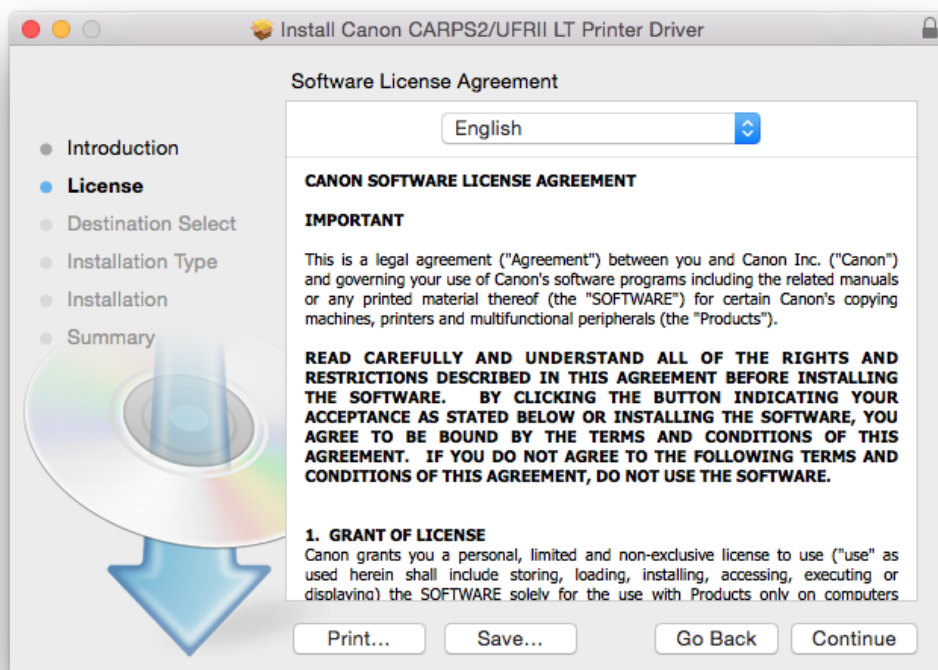
4. 開啓“UFR1I_LT_***.pkg”文件開始安裝設定
Double Click / Open “UFR1I_LT_***.pkg”



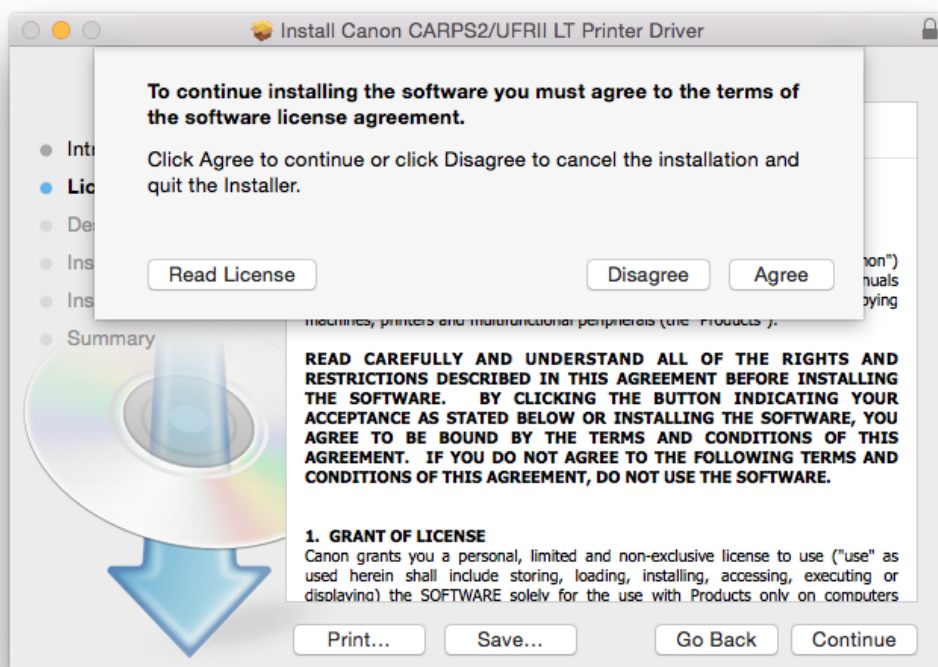
5. 按「Continue」
Choose “Continue”



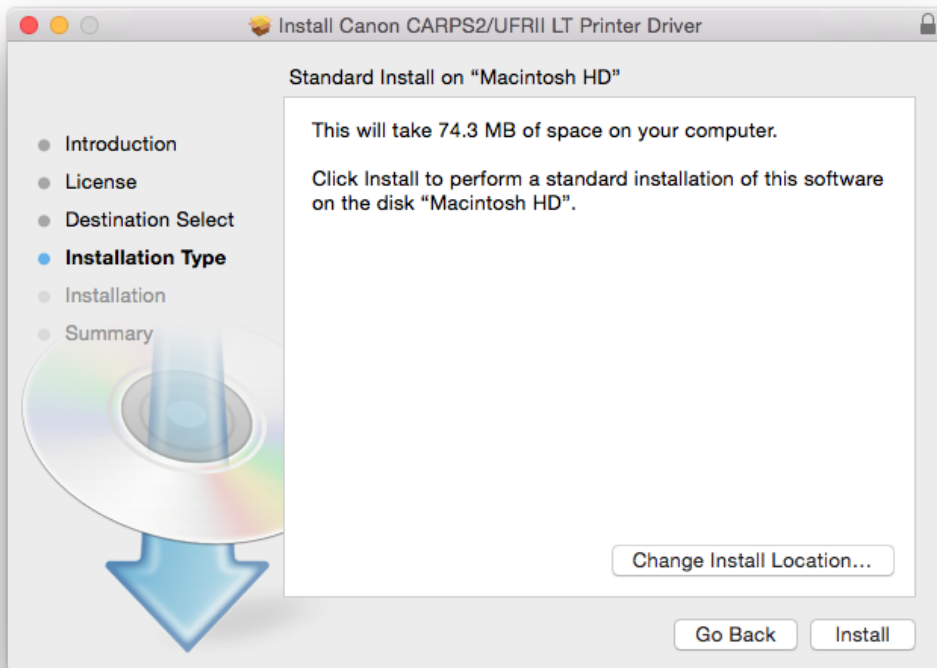
6. 按「Continue」
Choose “Continue”



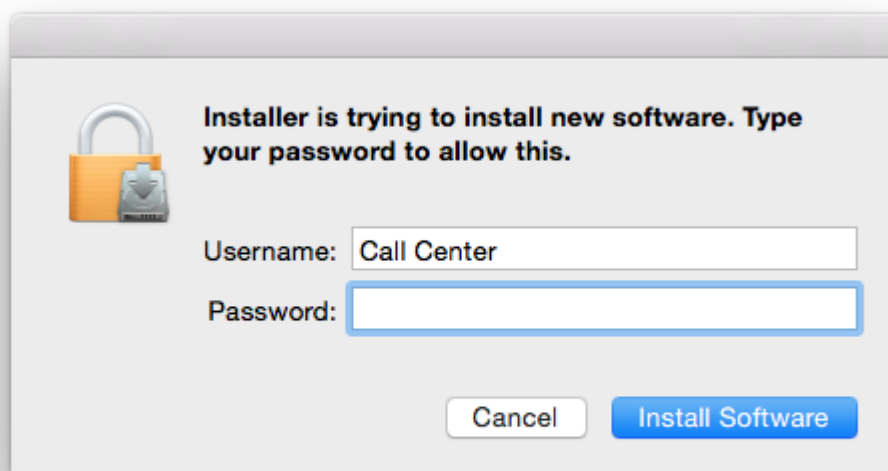
7. 如出現以下畫面，按「Agree」
Choose “Agree”



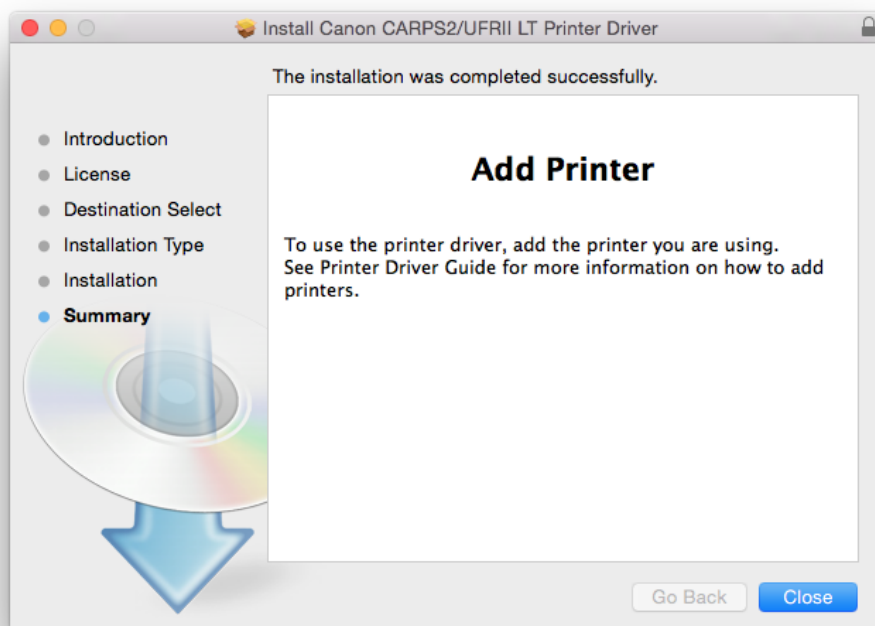
8. 按「Install」
Choose “Install”



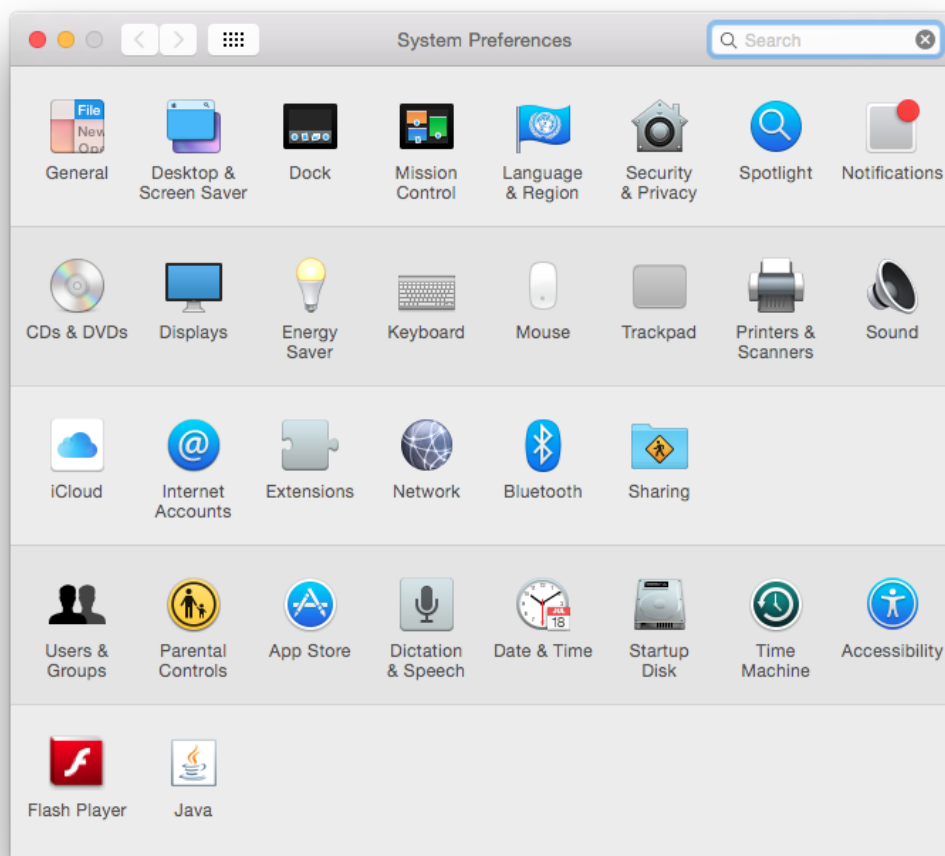
9. 如出現以下畫面，請輸入登入密碼
Type your password



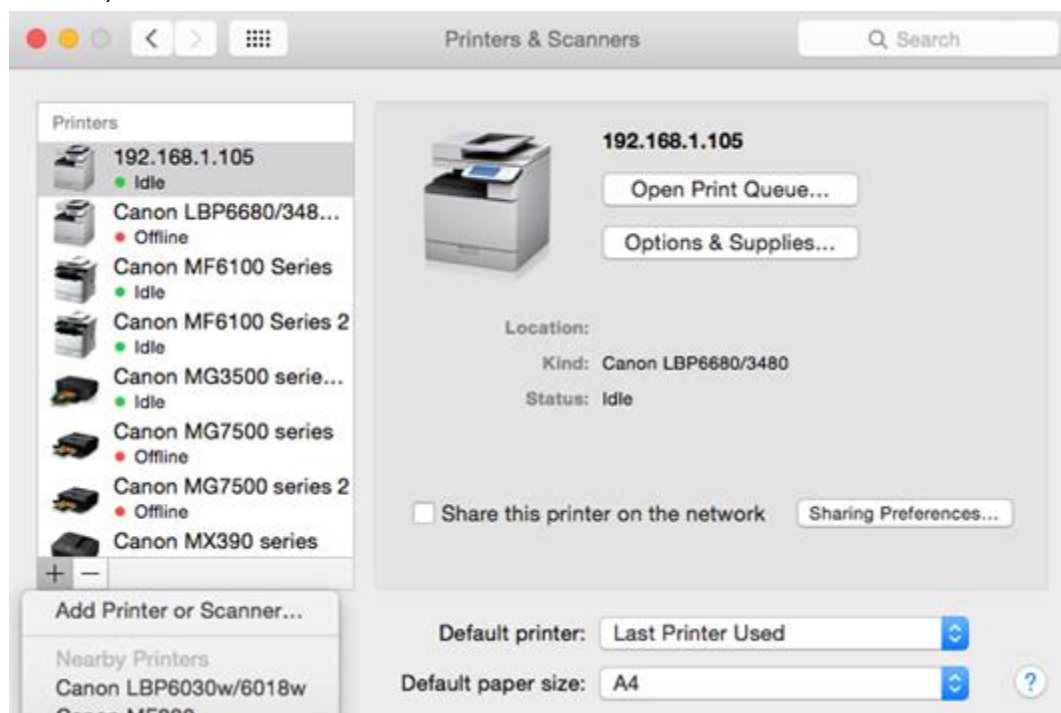
10. 按「Close」
Choose “Close”



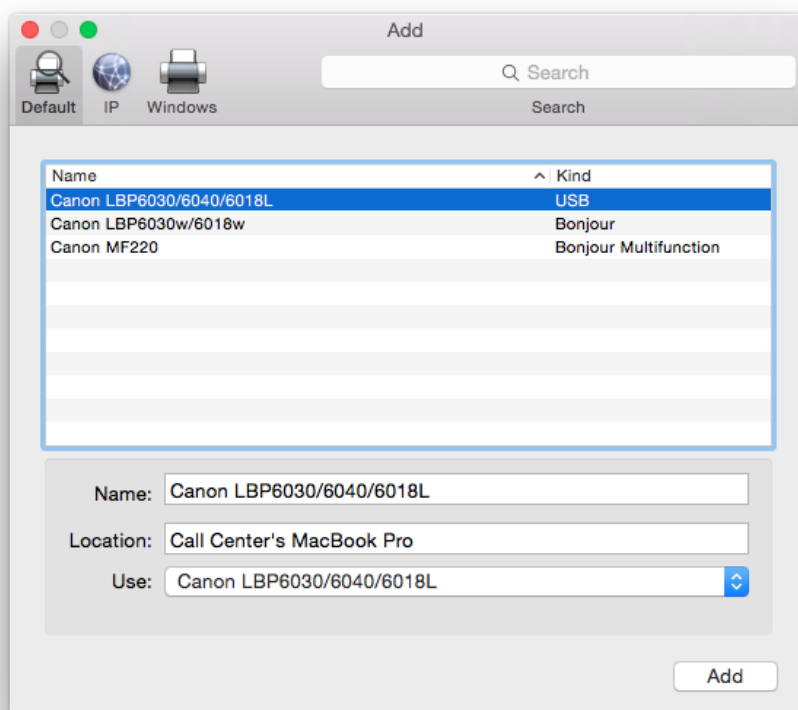
11. 完成安裝驅動程式後需新增印表機，到「系統偏好設定 (System Preference)」，選「印表機與掃描器 (Printers & Scanners)」
Go to “System Preference”, then open “Printers & Scanners”



12. 選取左下角「+」按鈕，選「加入印表機或掃描器（Add Printer or Scanner）」
Click “+”, then choose “Add Printer or Scanner”



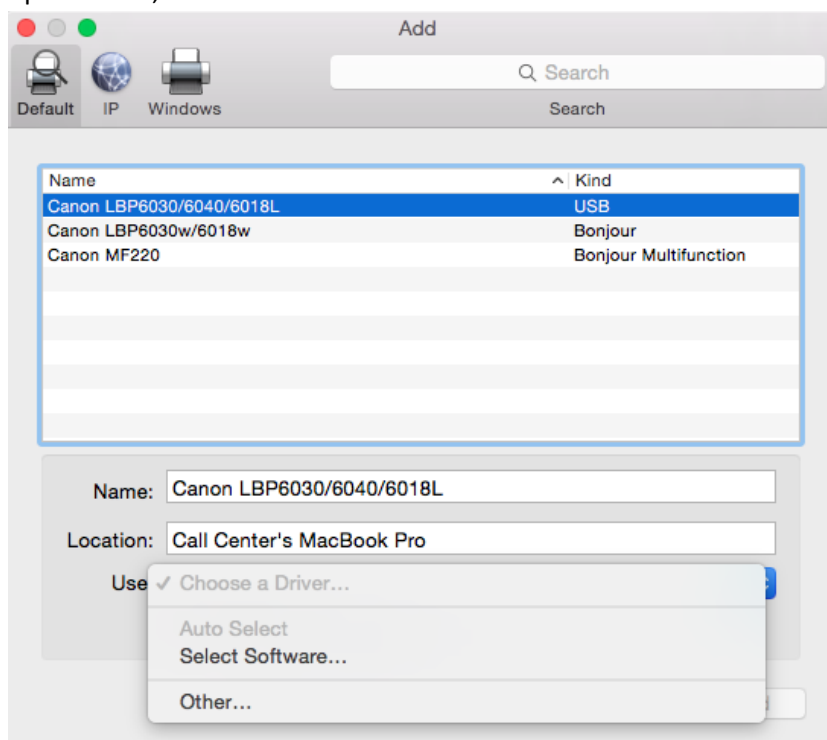
13. 名稱選擇「Canon LBP6030***」，種類「USB」，確認「使用（Use）」為「Canon LBP6030***」，然後按「加入（Add）」
“Name” chooses “Canon LBP6030***”, “Kind” chooses “USB”. After you confirm “Use” is “Canon LBP6030***”, then choose “Add”



*** 如「使用 (Use)」部份不是「Canon LBP6030***」，請按以下步驟設定***
(*** If "Use" is not "Canon LBP6030***", please reference the steps below***)

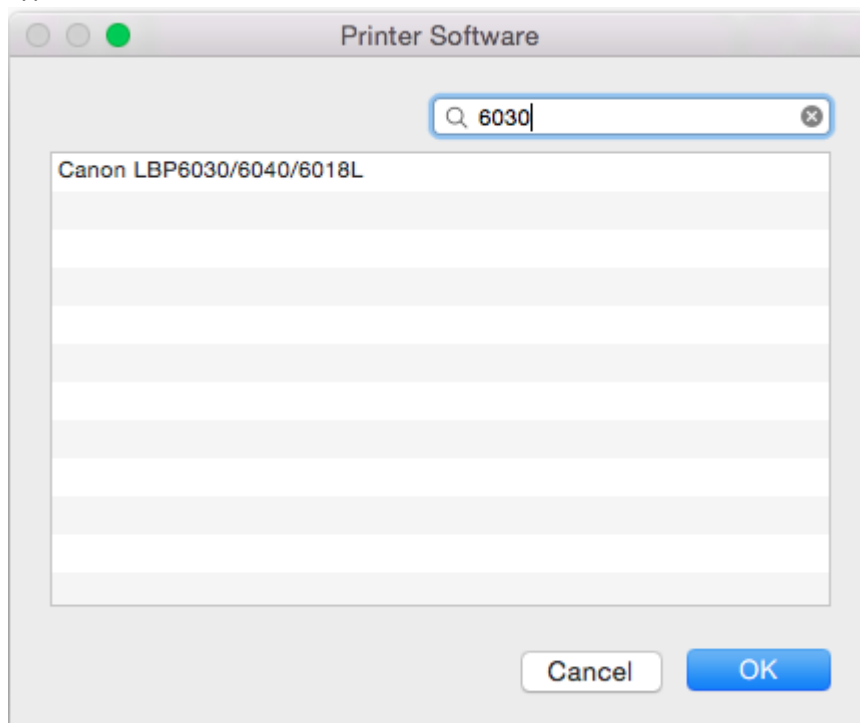
- a) 請如下圖打開「使用 (Use)」的選單，選 Select Software

Open "Use", then choose "Select Software"

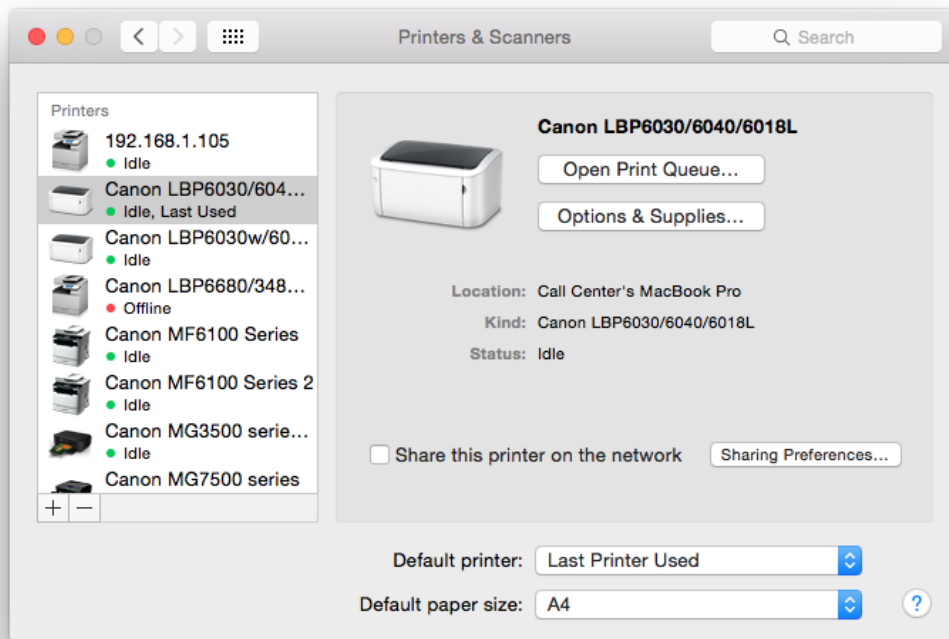


- b) 輸入 6030 以搜尋「Canon LBP6030***」

Type "6030", then choose "Canon LBP6030***"



14. 加入完成
Finish



-完-
- End -