

## LBP6030w 安裝 Win 8.1 透過無線 LAN 連線連接印表機之驅動程式步驟

**\*\*注意: 安裝驅動程式前請勿接駁 USB 線，以免系統發生錯誤\*\***

**\*\* Please don't plug the USB cable until the driver asked to do so**

1. 到以下佳能網站下載印表機的驅動程式

Go to below Canon web and download the printer driver

[https://hk.canon/en/support/imageCLASS%20LBP6030\\_%20LBP6030B\\_%20LBP6030w/model](https://hk.canon/en/support/imageCLASS%20LBP6030_%20LBP6030B_%20LBP6030w/model)

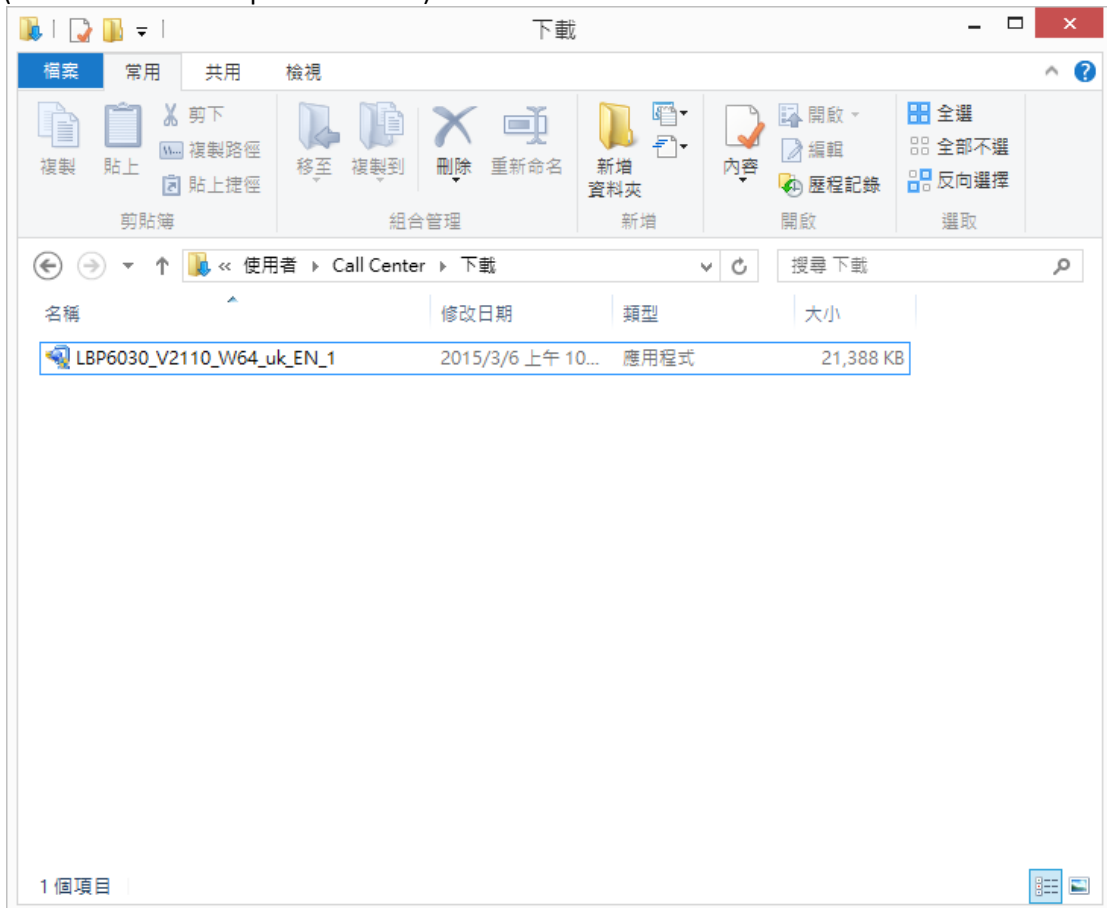
2. 選擇並下載以下檔案

Choose and download below files:

- 打印機驅動程式 / Printer Driver

**[Windows xxbit] LBP6030w/LBP6030B/LBP6030 UFR II LT Printer Driver Ver.xx.xx**

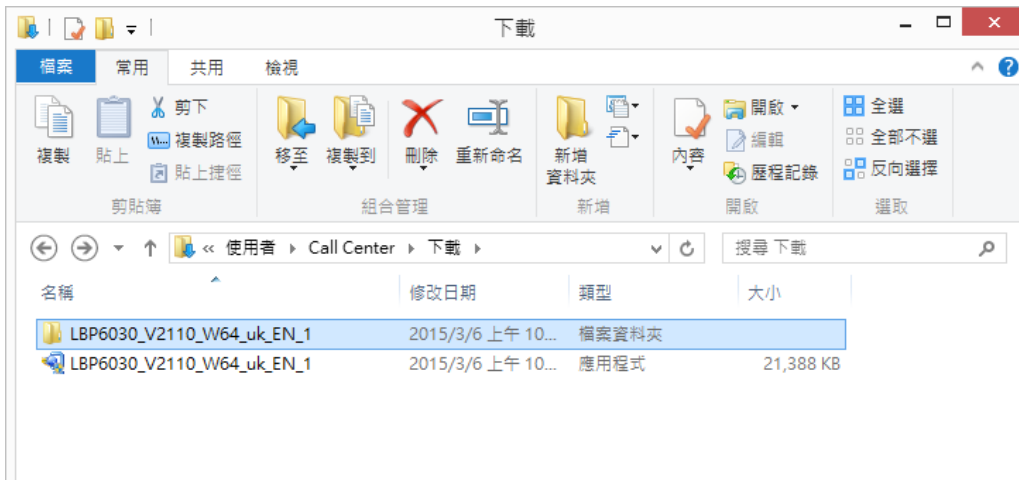
3. 下載的文件以自解壓縮檔檔案(.exe 格式)保存在指定的文件夾中  
(The file is saved to specified folder)



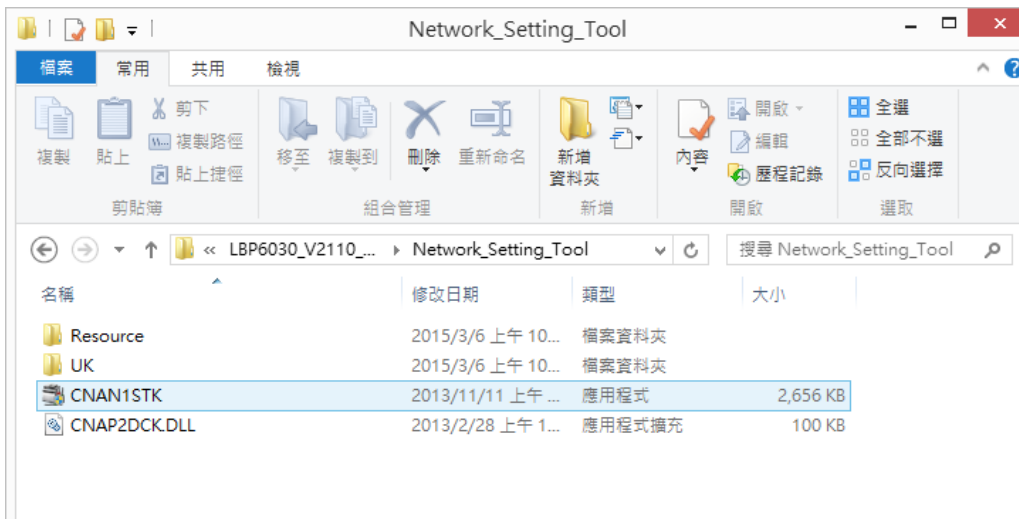
4. 打開文件解壓縮。將在同一文件夾中創建新文件夾。新文件夾的名稱與解壓縮文件的名稱相同  
Open “LBP6030\_\*\*\*.exe”, a new folder will be created.

- 如打開文件解壓縮時出現「使用者帳戶控制」選項，請按「是」

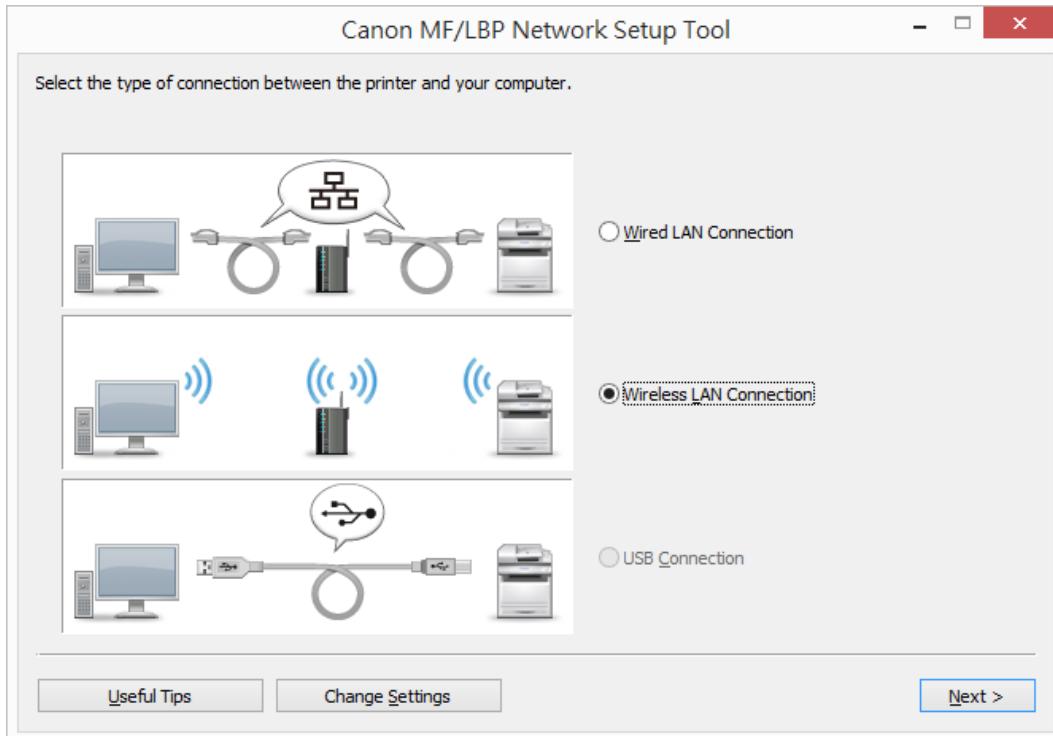
- If “User Account Control” window pop-up. Choose “Yes”



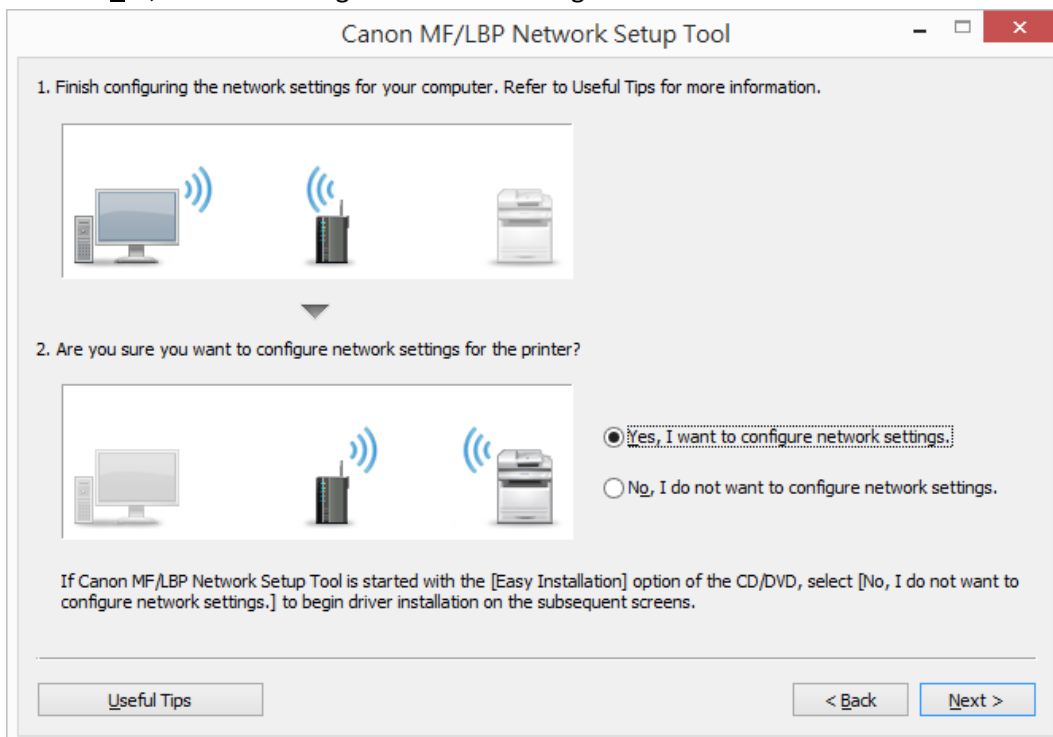
5. 進入「Network\_Setting\_Tool」文件夾，開啓“CNAN1STK.exe”文件開始安裝設定  
Go into “Network\_Setting\_Tool”, then Double Click / Open “CNAN1STK.exe”



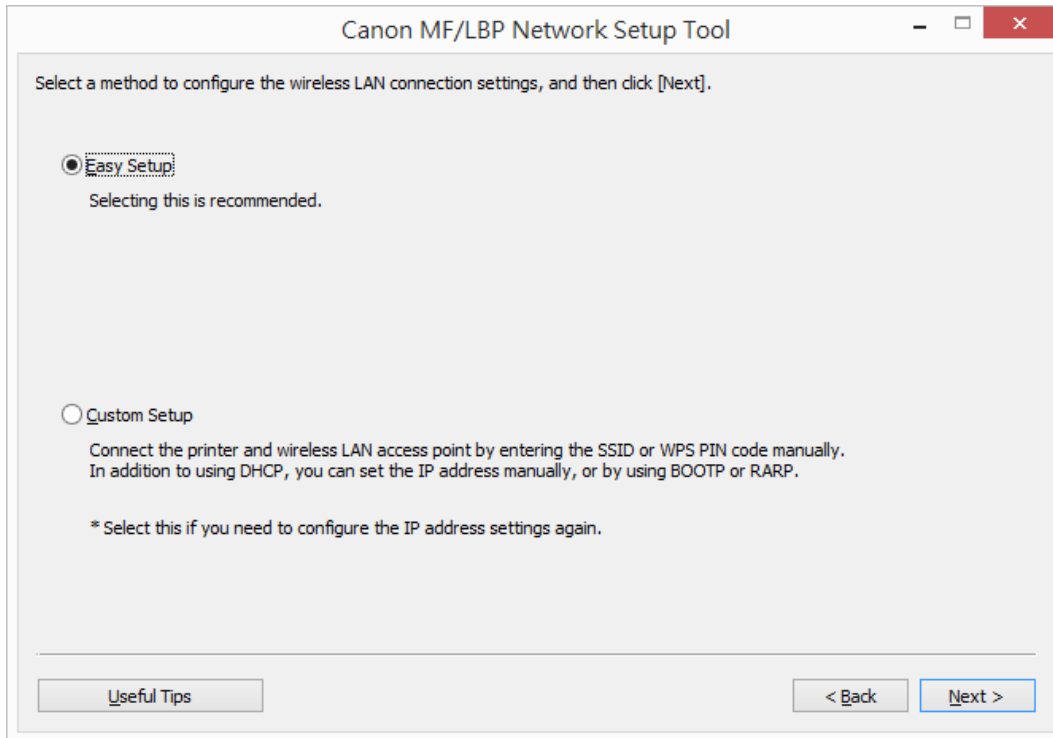
6. 選擇「Wireless LAN Connection」  
Choose “Wireless LAN Connection”



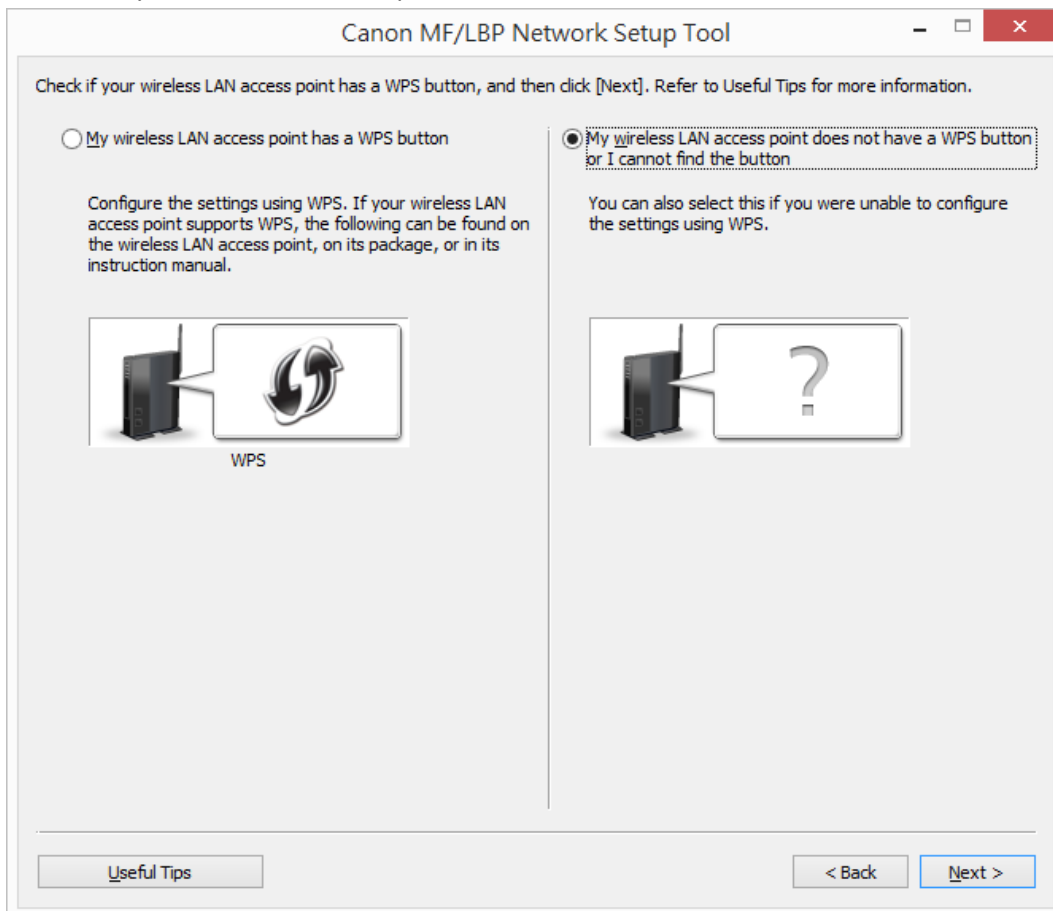
7. 選擇「Yes, I want to configure network settings」  
Choose “Yes, I want to configure network settings”



8. 選擇「Easy Setup」  
Choose “Easy Setup”

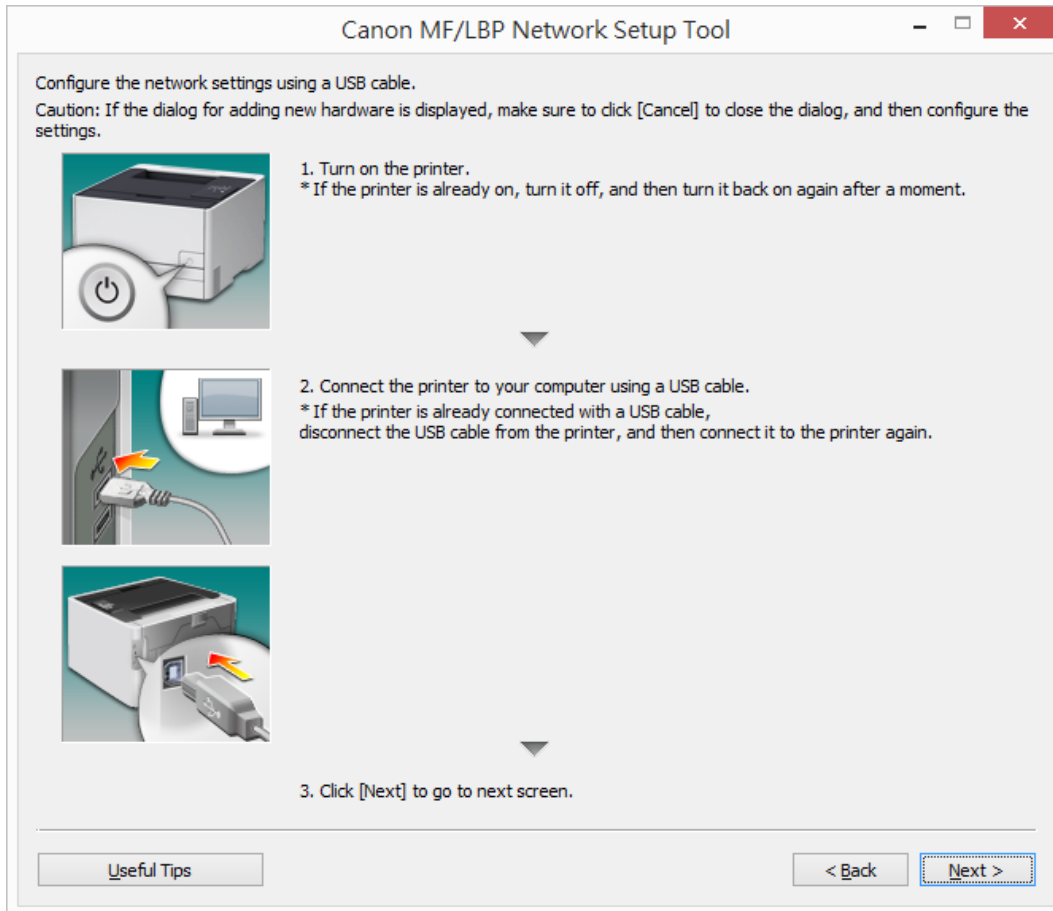


9. 選擇「My wireless LAN access point does not have a WPS button or I cannot find the button」  
Choose “My wireless LAN access point does not have a WPS button or I cannot find the button”



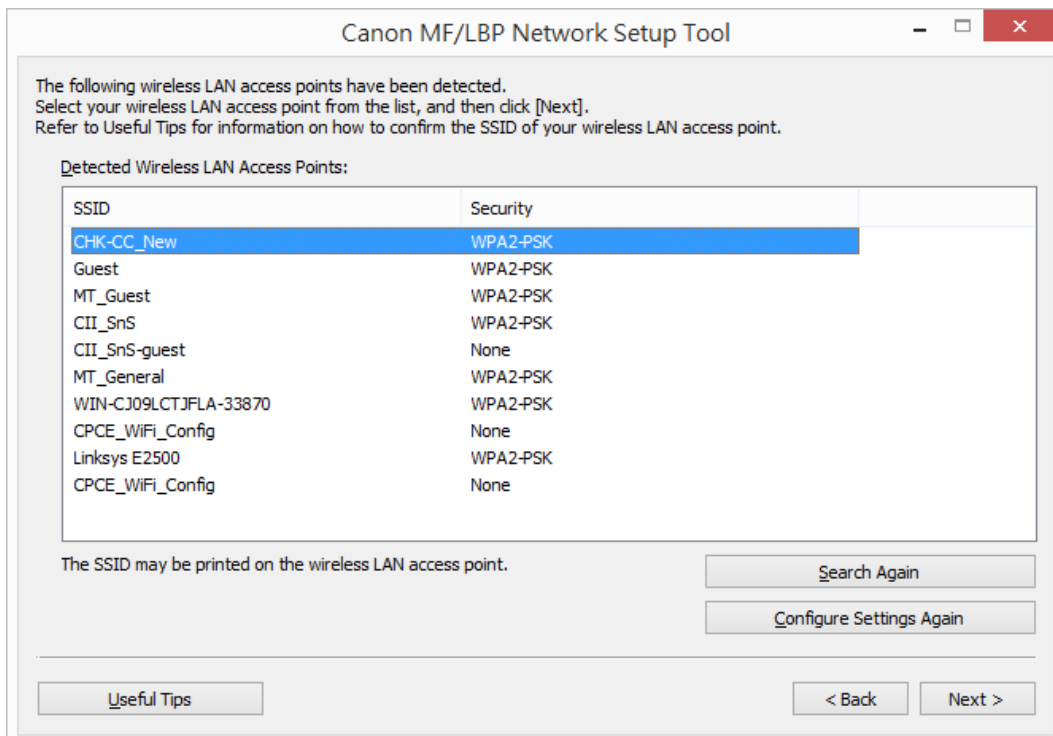
10. 請使用 USB 電纜線連接印表機和電腦，然後按「Next」

Connect printer and computer with the USB cable, and then turn on the printer



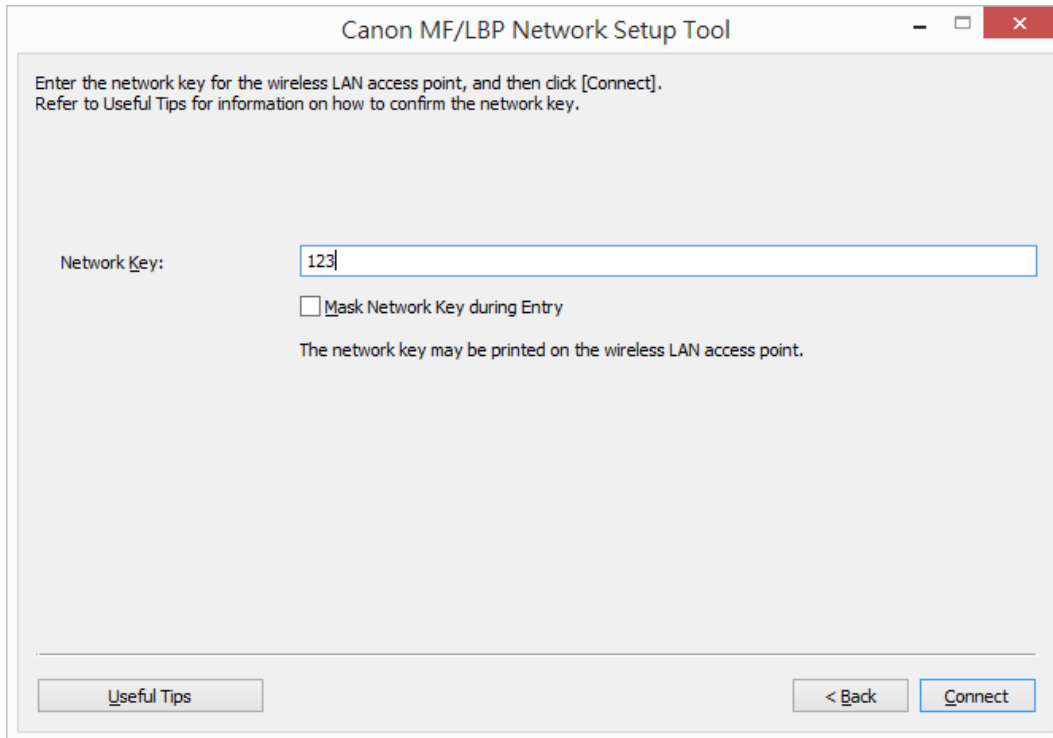
11. 按「下一步」

Choose "Next"

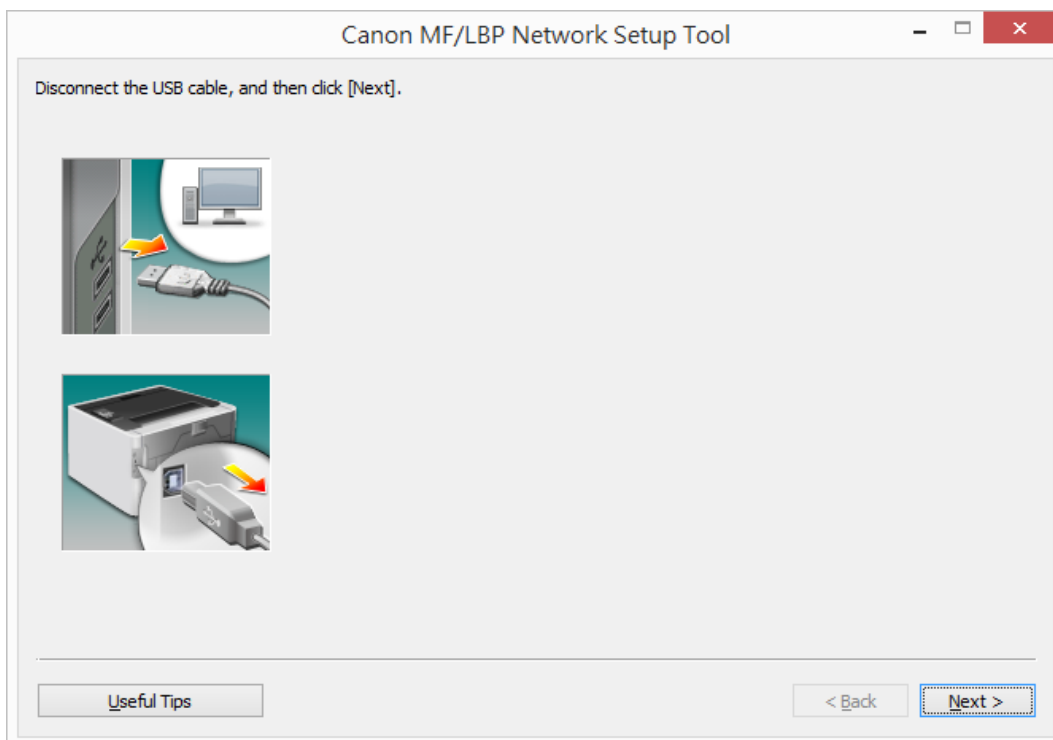


12. 如出現如下畫面，請輸入 Wi-Fi 網路金鑰

### Type your Network Key

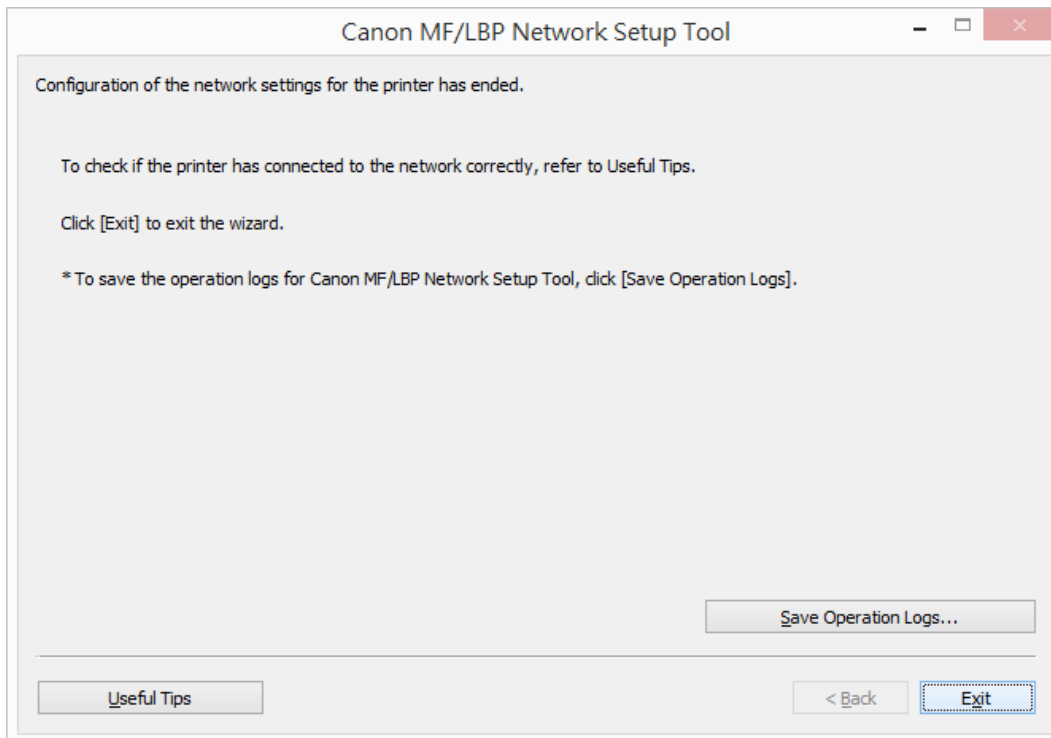


13. 按「下一步」  
Choose "Next"



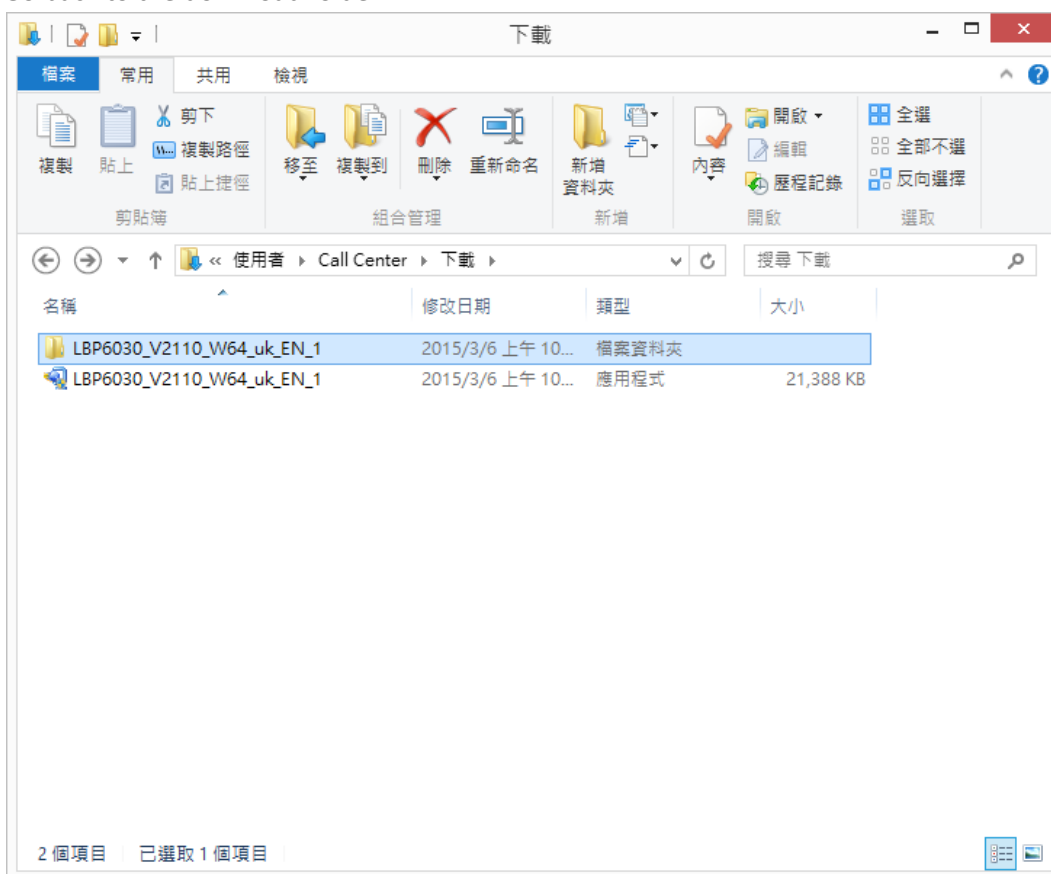
14. 按「Exit」離開網路設定工具

Choose “Exit”

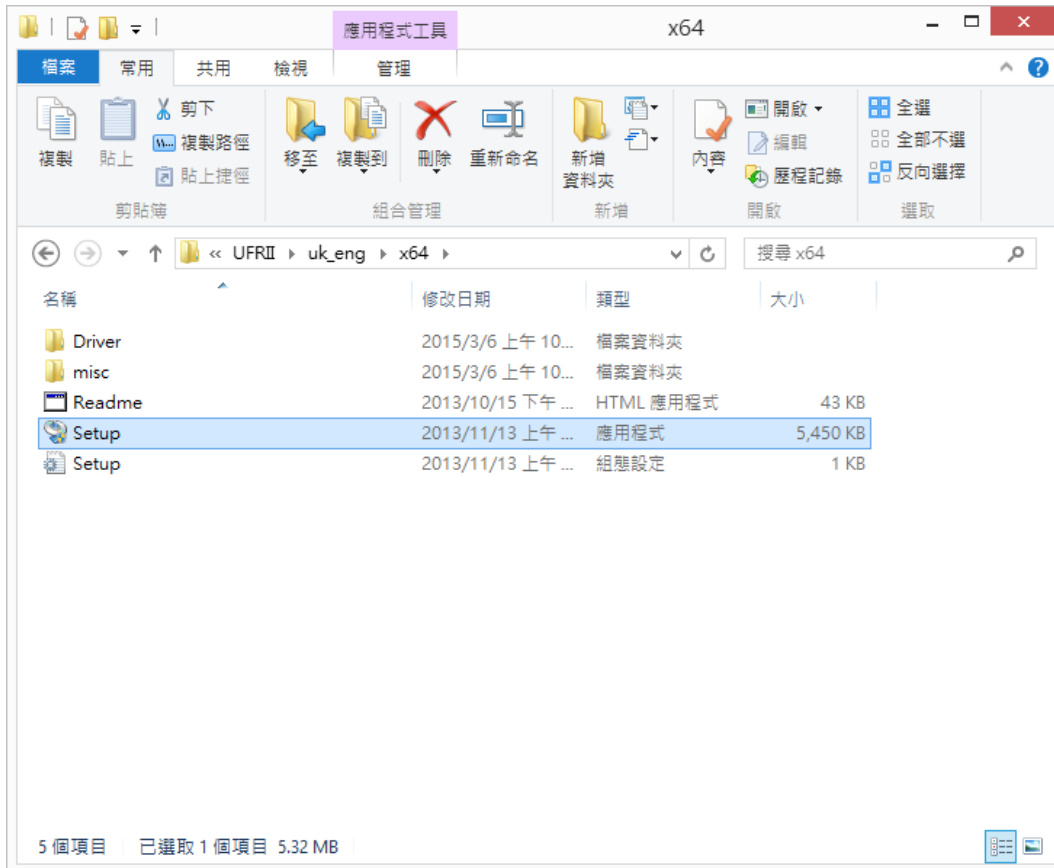


15. 再次回到早前解壓縮的文件夾

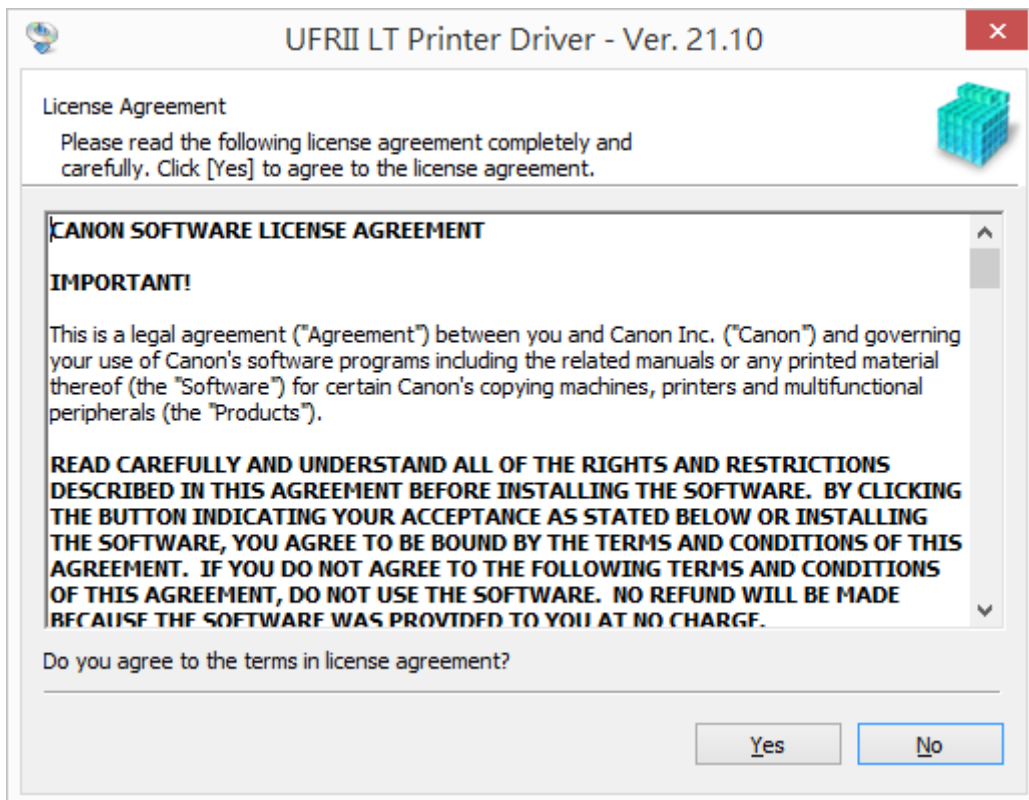
Go back to the download folder



16. 進入「UFR II」>「uk\_eng」>「32bit」或「x64」文件夾，開啓“Setup.exe”文件開始安裝設定  
Go into “UFR II” > “uk\_eng” > “32bit” or “x64”, then Double Click / Open “Setup.exe”

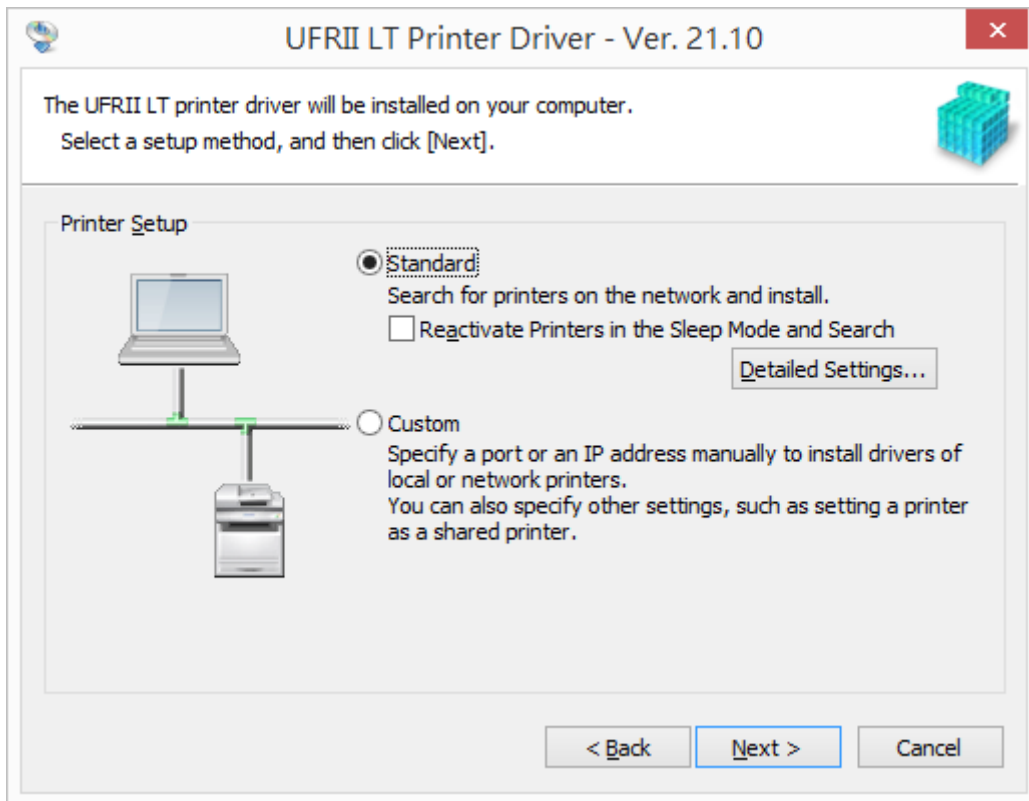


17. 按「Yes」  
Choose “Yes”

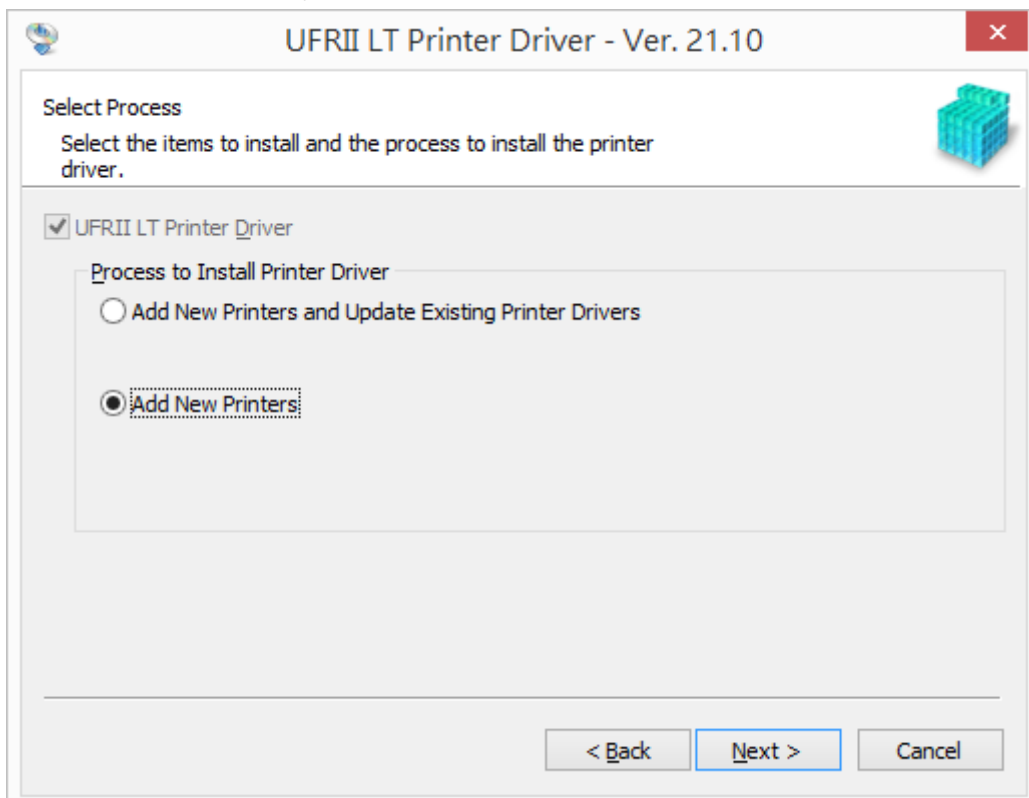




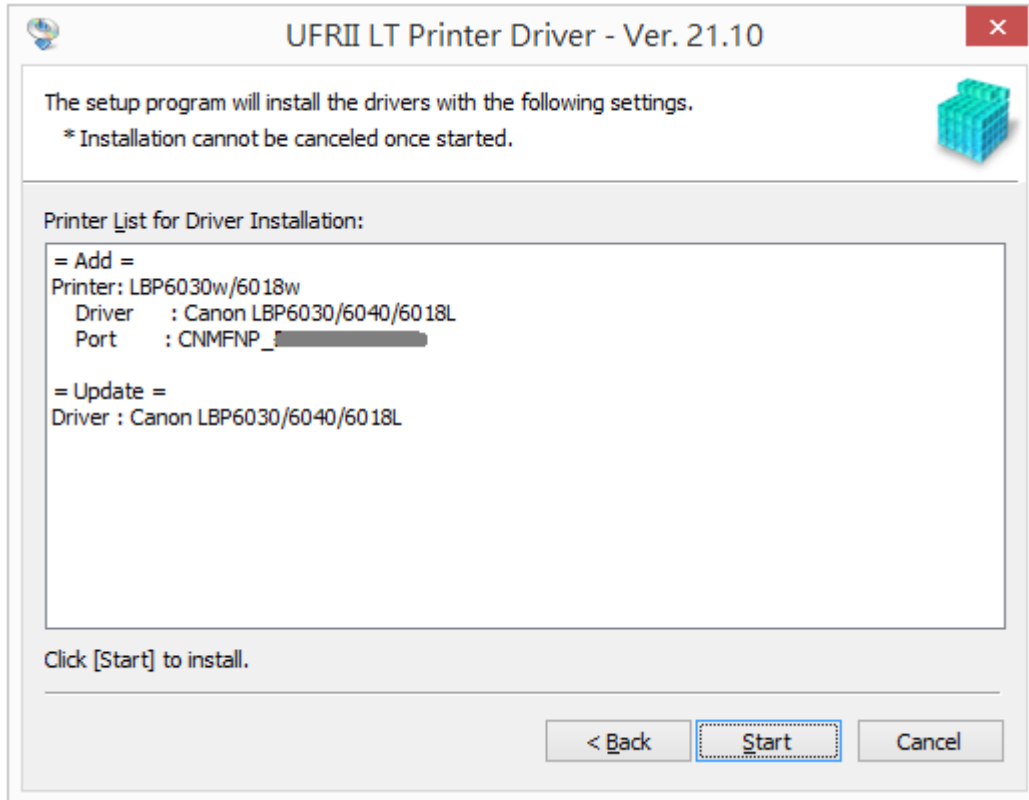
18. 選「Standard」，按「Next」  
Select “Standard”, then choose “Next”



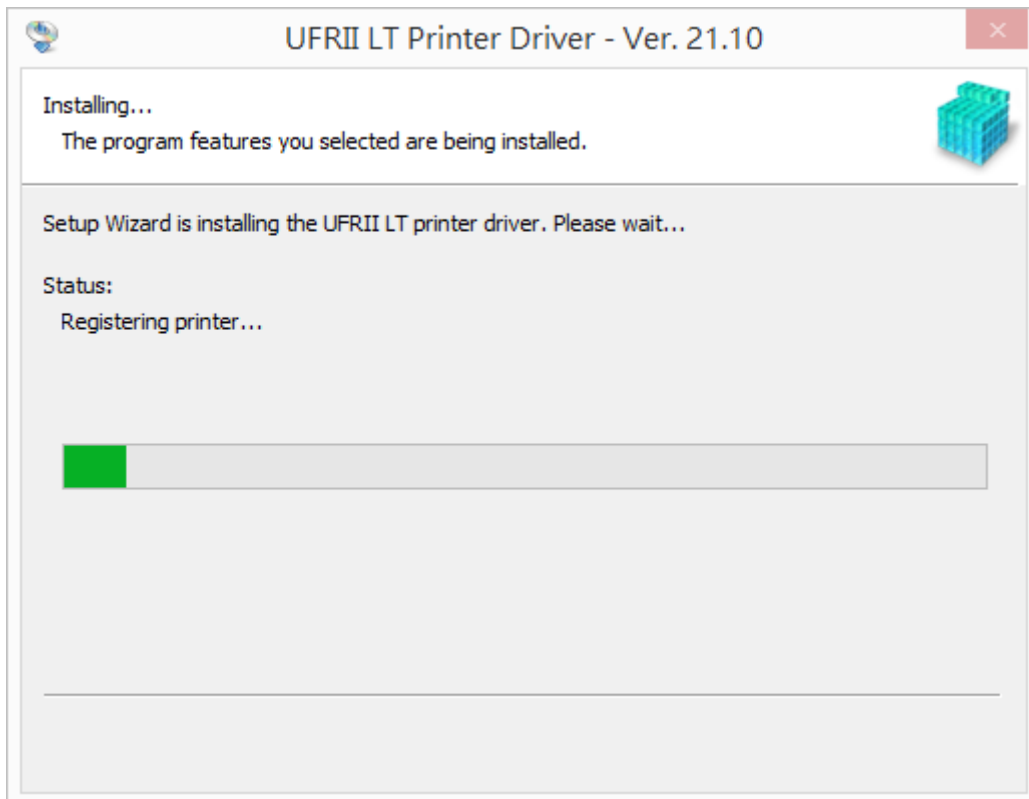
19. 選「Add New Printer」，按「Next」  
Select “Add New Printer”, then choose “Next”



20. 按「Start」  
Choose “Start”

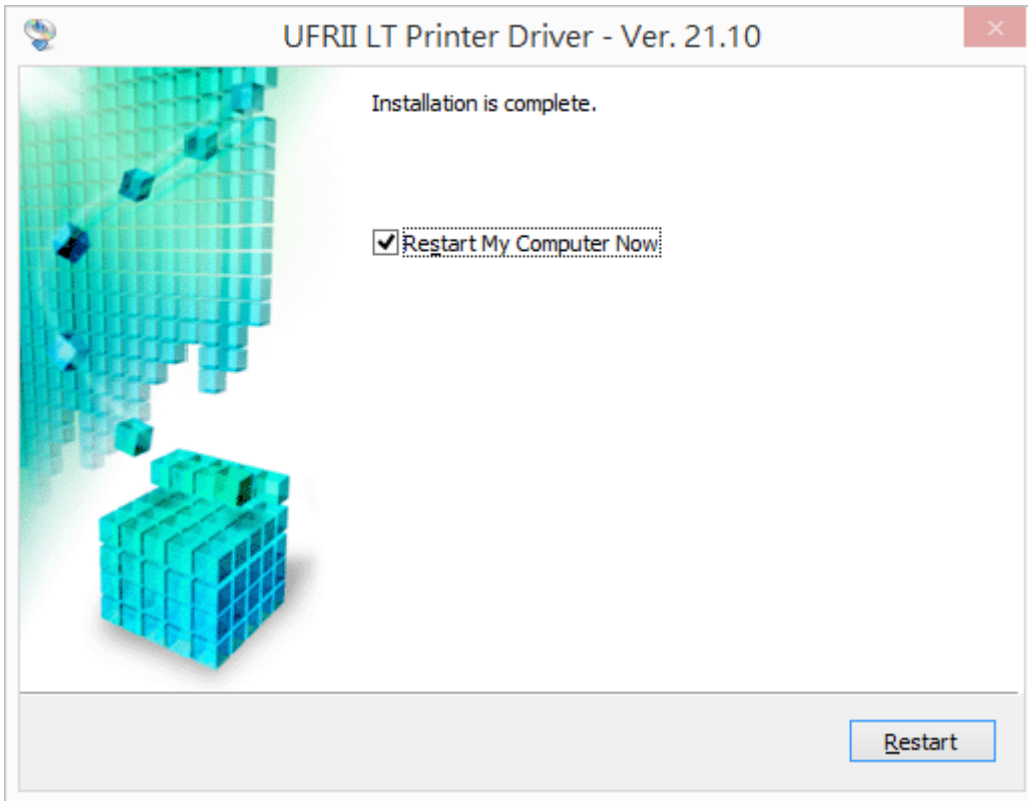


21. 正在安裝，請等待  
Waiting for the installation progress



22. 建議別選「Restart My Computer Now」，按「Restart」重新開機

We recommend choose “Restart My Computer Now”, and then restart computer



-完-  
-End-