

LBP6030w 安裝 Win 8.1 透過 USB 連線連接印表機之驅動程式步驟

****注意: 安裝驅動程式前請勿接駁 USB 線，以免系統發生錯誤****

**** Please don't plug the USB cable until the driver asked to do so**

1. 到以下佳能網站下載印表機的驅動程式

Go to below Canon web and download the printer drive

https://hk.canon/en/support/imageCLASS%20LBP6030_%20LBP6030B_%20LBP6030w/model

2. 選擇並下載以下檔案

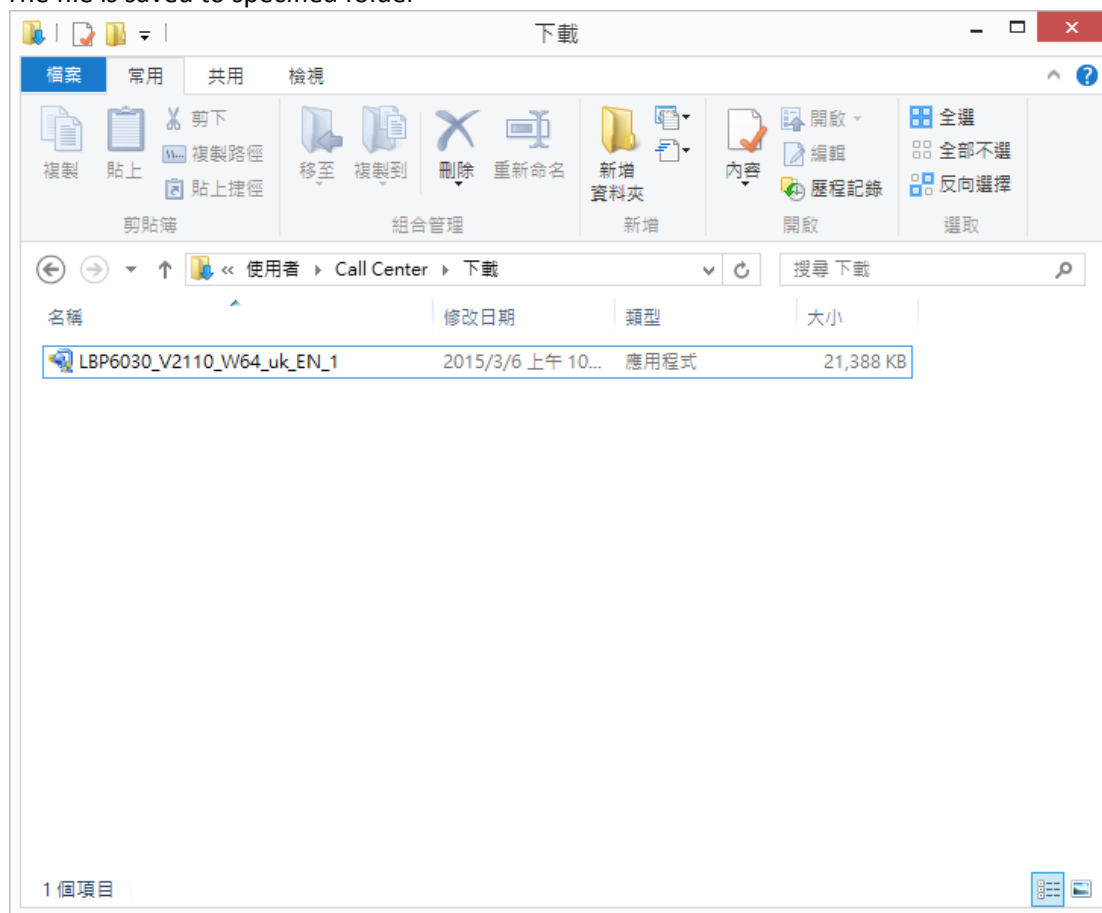
Choose and download below files:

- 打印機驅動程式 / Printer Driver

[\[Windows xbit\] LBP6030w/LBP6030B/LBP6030 UFR II LT Printer Driver Ver.xx.xx](#)

3. 下載的文件以自解壓縮檔案(.exe 格式)保存在指定的文件夾中

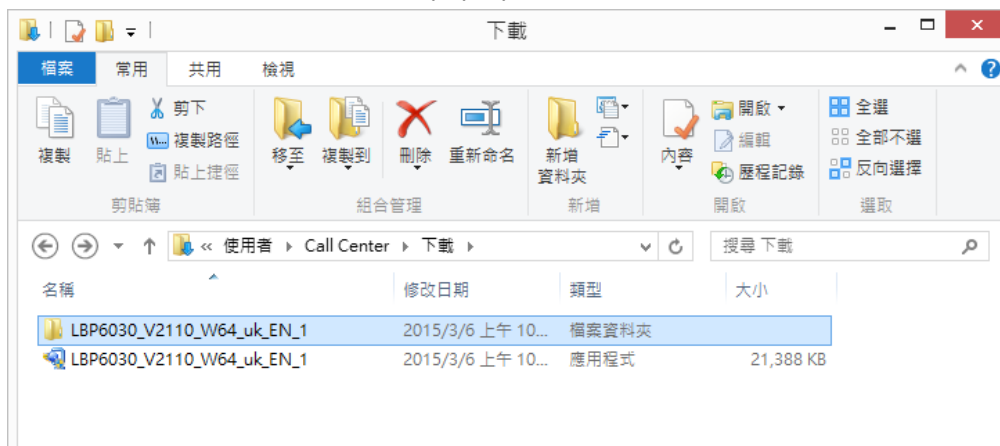
The file is saved to specified folder



4. 打開文件解壓縮。將在同一文件夾中創建新文件夾。新文件夾的名稱與解壓縮文件的名稱相同
Open “LBP6030_***.exe”, a new folder will be created.

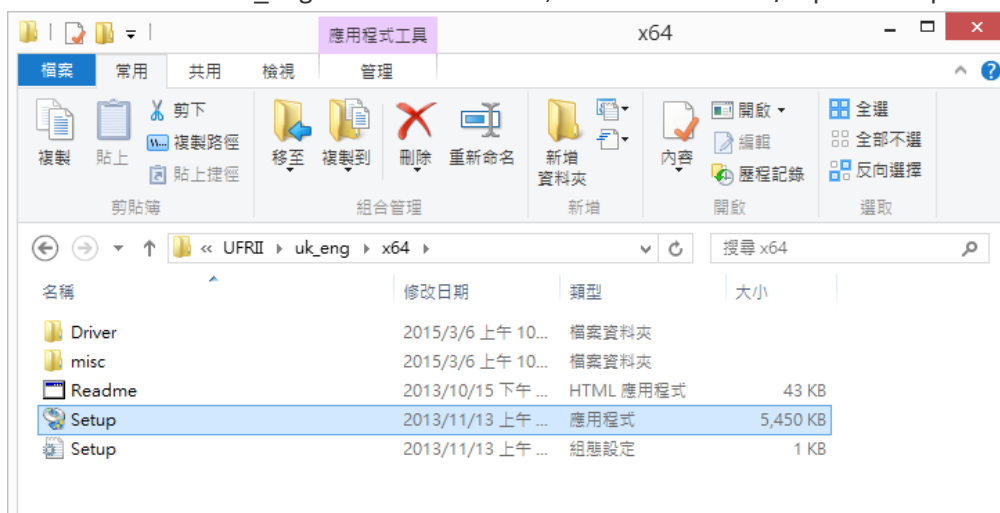
- 如打開文件解壓縮時出現「使用者帳戶控制」選項，請按「是」

- If “User Account Control” window pop-up. Choose “Yes”

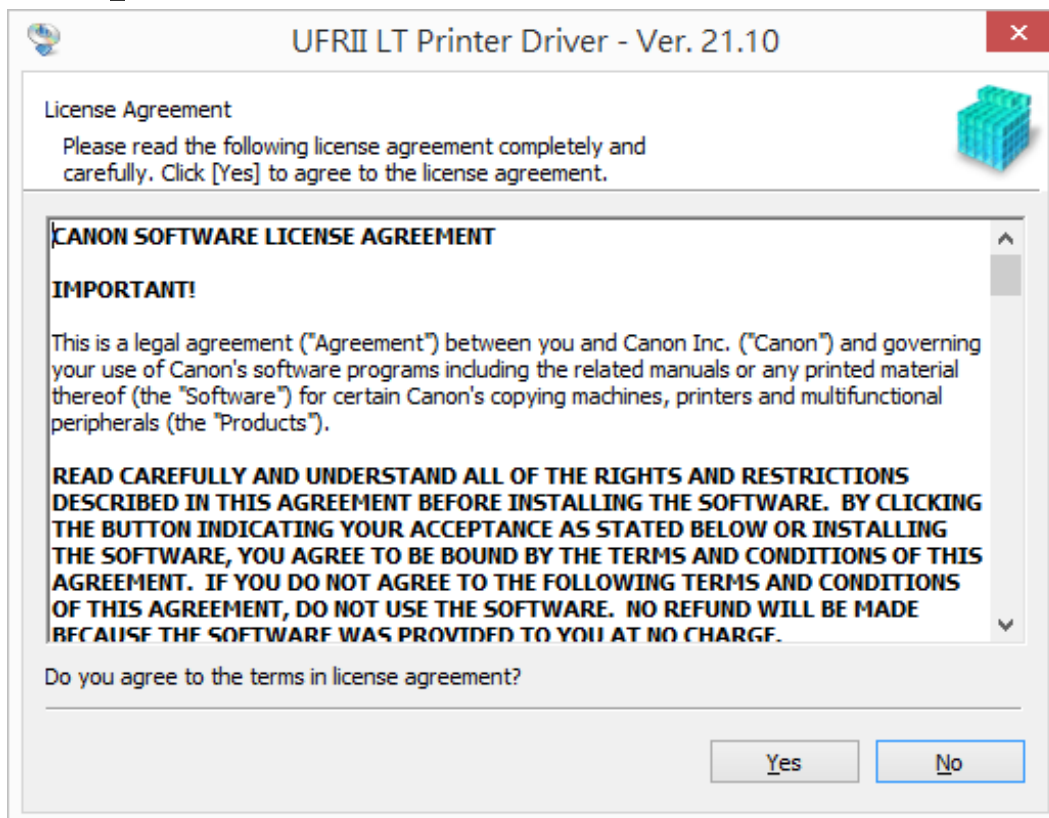


5. 進入新文件夾，「UFR11」> 「uk_eng」> 「32bit」或「x64」文件夾，然後開啓“Setup.exe”文件開始安裝設定

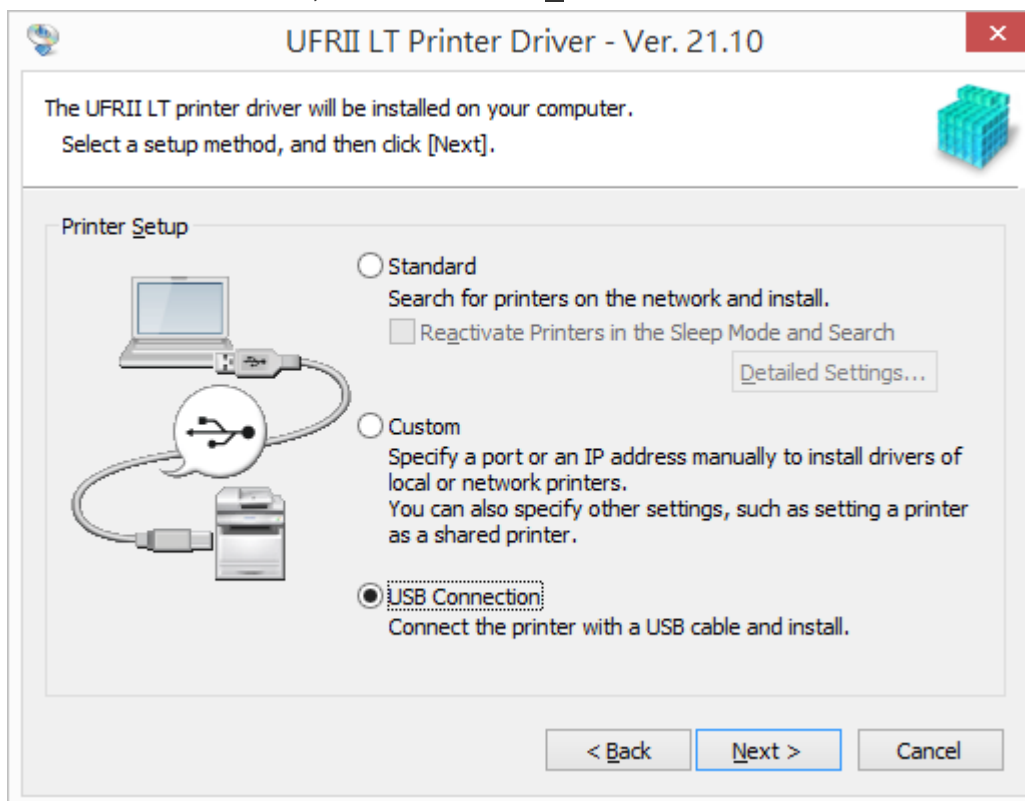
Go into “UFR11” > “uk_eng” > “32bit” or “x64”, then Double Click / Open “Setup.exe”



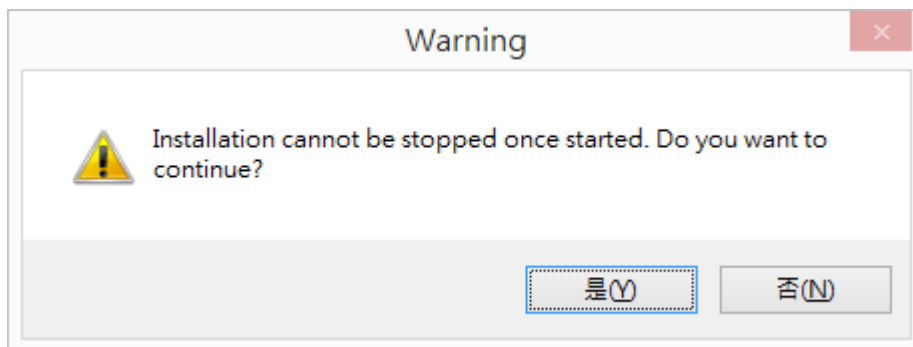
6. 按「Yes」
Choose “Yes”



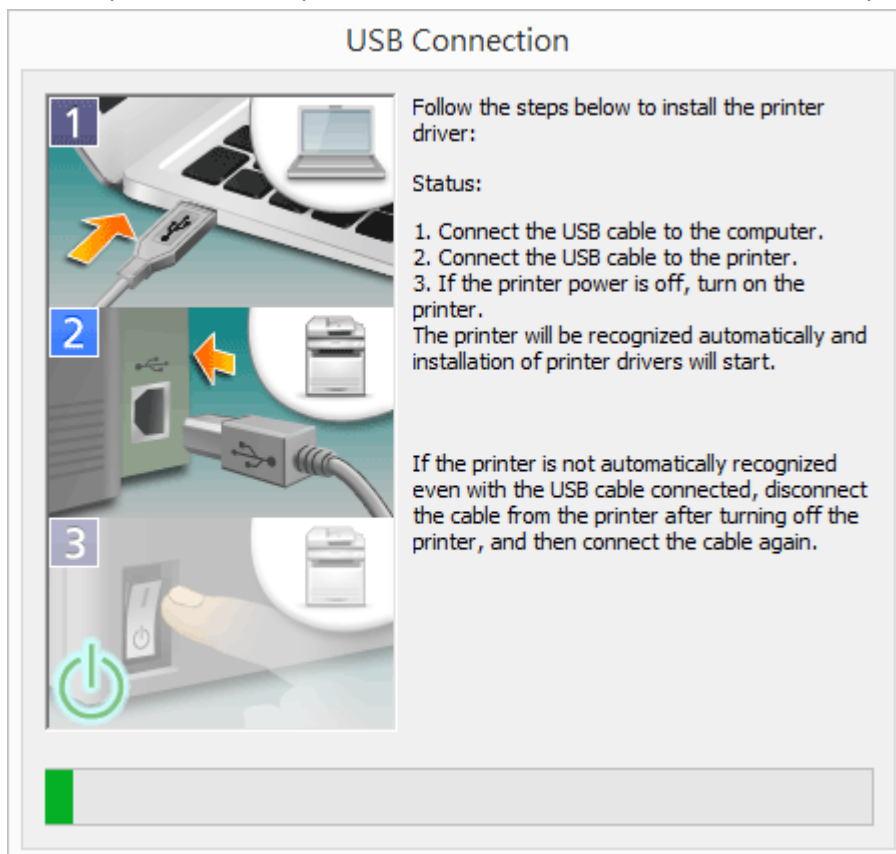
7. 選「USB Connection」，按「Next」
Choose “USB Connection”, and then choose “Next”



8. 按「是」
Choose "Yes"

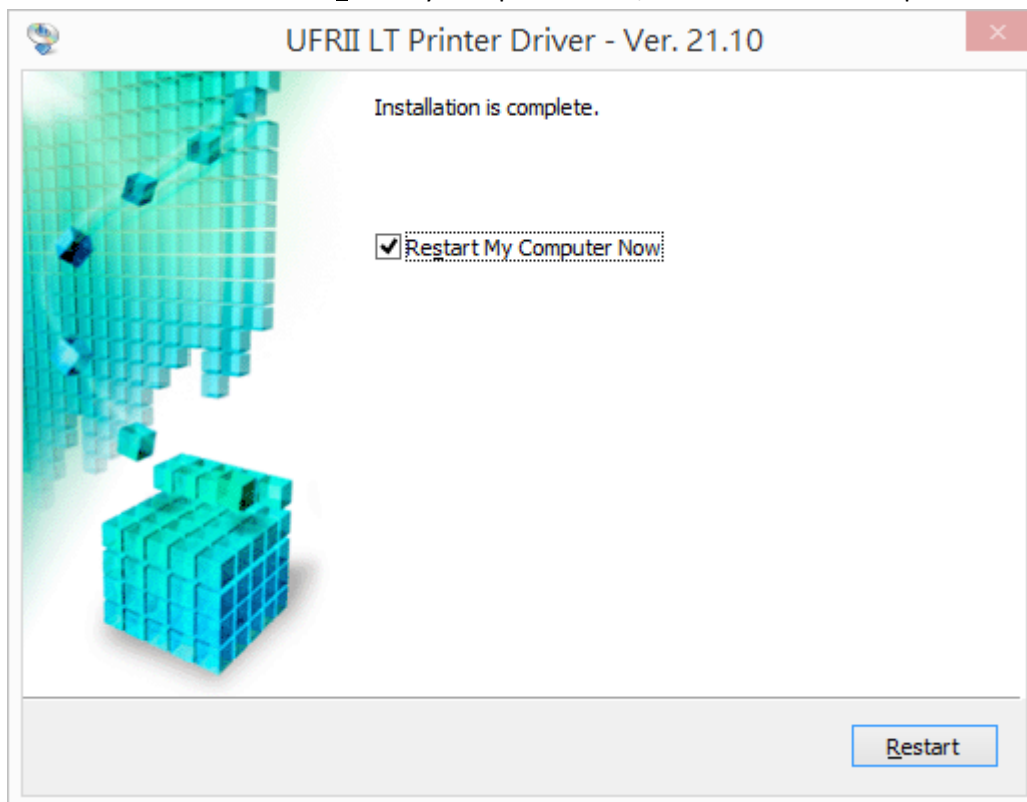


9. 以 USB 接駁打印機及電腦，然後開啟打印機
Connect printer and computer with the USB cable, and then turn on the printer



10. 建議別選「Restart My Computer Now」，按「Restart」重新開機

We recommend choose "Restart My Computer Now", and then restart computer



-完-

-End-