

Pro-100 安裝 MAC 透過 LAN 連線連接印表機之驅動程式步驟
The Driver installation procedure of PRO-100 (Via LAN)

****注意: 安裝驅動程式前請勿接駁 USB 線，以免系統發生錯誤****

****Caution: Do not plug –in the USB cable with the printer and the Computer before the installation****

到佳能網站 https://hk.canon/zh_HK/support/0100451402/15，下載印表機的驅動程式

Go to: https://hk.canon/zh_HK/support/0100451402/15，then download the printer driver

下載及安裝步驟

(Download and Driver Installation Procedure)

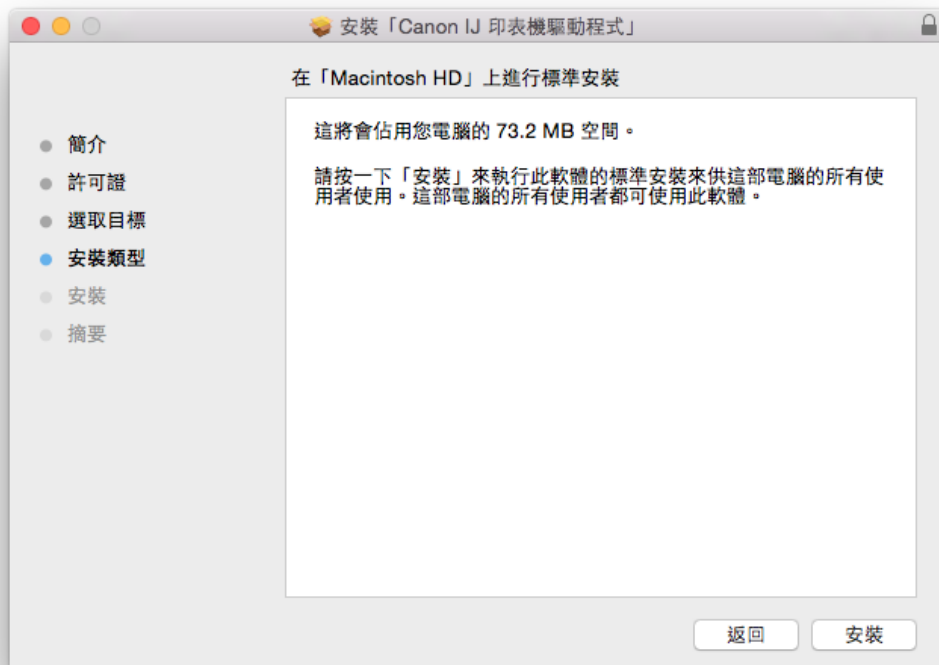
- 1 按「PrinterDriver」PRO-100 series_120500.pkg」(Click” PrinterDriver」PRO-100 series_120500.pkg”)



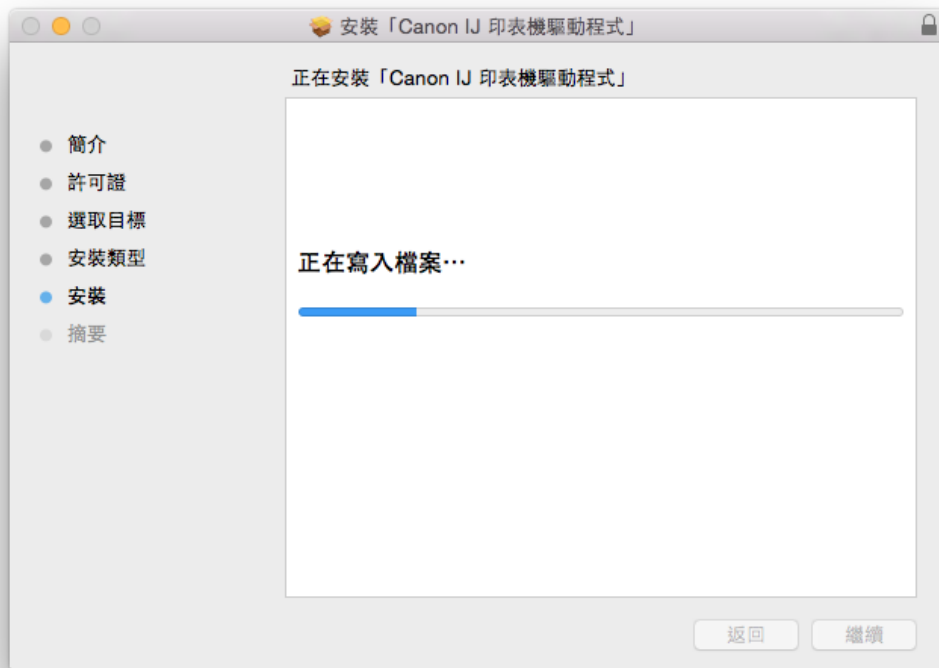
2 按「繼續」及「同意」(Click “Continue”& “Agree”)



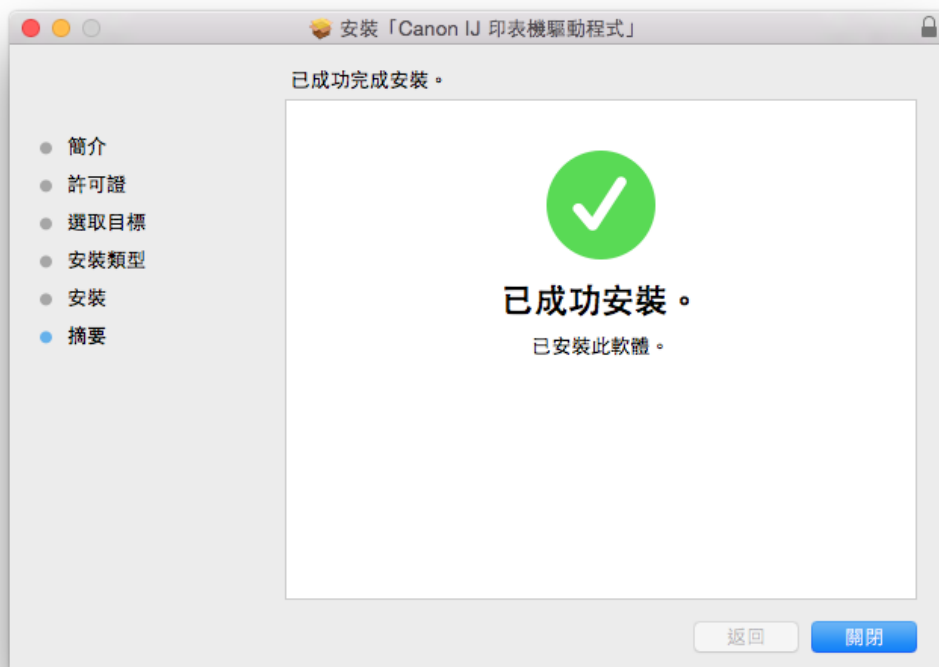
3 按「安裝」(Click “Install”)



4 等待軟件安裝 (Wait for the installation)



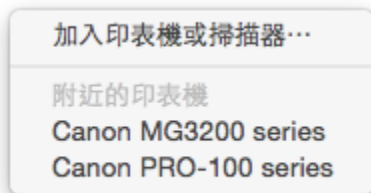
5 按「關閉」 (Click "Close")



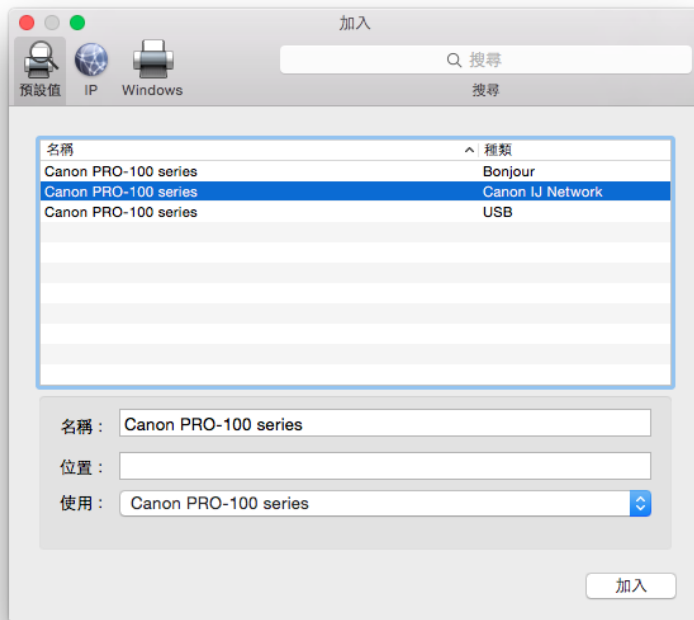
6 完成安裝驅動程式後需新增印表機，到「系統偏好設定」，選「印表機與掃描器」Go to “System Preferences” and click “Printer and Scanner”）



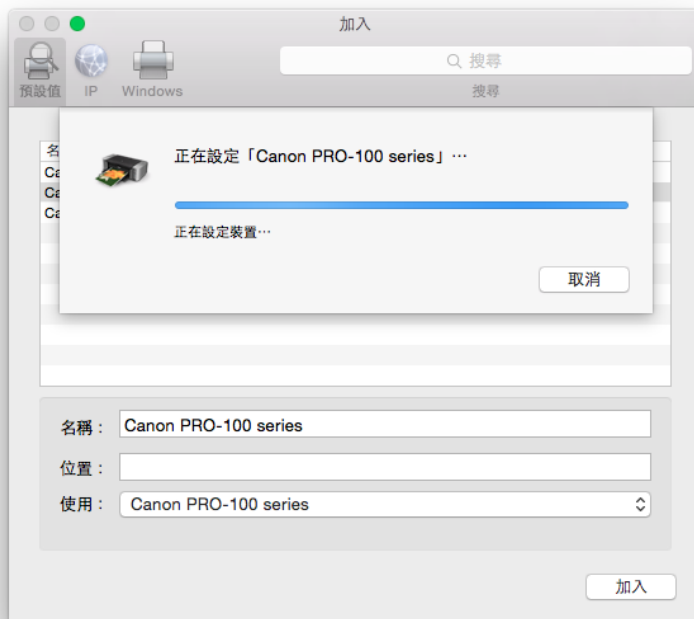
7 選取左下角「+」按鈕，選「加入印表機或掃描器」(Click the “+” button and select “Add printer or Scanner”)



8 名稱選擇「Canon PRO-100 Series」，使用選擇「Canon PRO-100 Series」之 Canon IJ Network 按「加入」，新增印表機驅動程式 (Select “Canon Pro-100 series – Canon IJ Network” and Click “add”)



9 等待加入印表機 (Wait for the printer to be added)



10 完成以上設定後已可使用 Pro-100 作打印功能 (Installation completed)

-完-
-End-