

## MF212w安裝Win 8.1 透過有線LAN連線連接印表機之驅動程式步驟

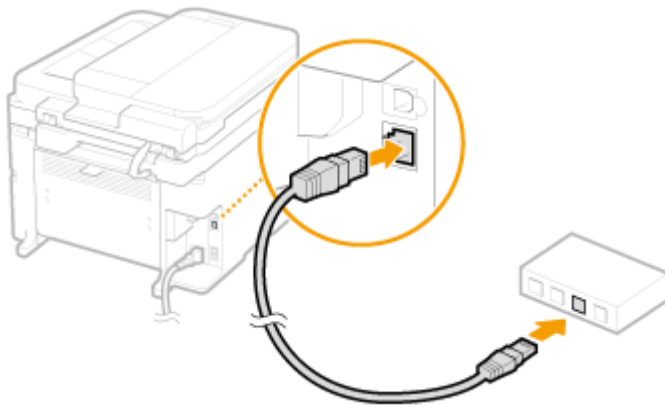
**\*\*注意: 安裝驅動程式前請勿接駁USB線，以免系統發生錯誤\*\***

**\*\* Please don't plug the USB cable until the driver asked to do so\*\***



先將打印機連接到網路，詳細可參考以下步驟 (Please follow the procedure below)



1. 連接區域網路纜線 (Connect a LAN cable.)


- 使用區域網路纜線將本機連接到路由器 (Connect the machine to a router by using a LAN cable.)
- 推入接頭，直至聽到喀嗒聲 (Push the connector in until it clicks into place.)



2. 按  (Press .)

3. 使用▲/▼選擇 <網路設定>，然後按  (Use / to select <Network Settings>, and press .)

- 若顯示 PIN 碼輸入畫面，請使用數字鍵輸入 PIN 碼，然後按 。設定系統管理員 PIN (If a screen for entering a PIN is displayed, enter the PIN with the numeric keys and press .)

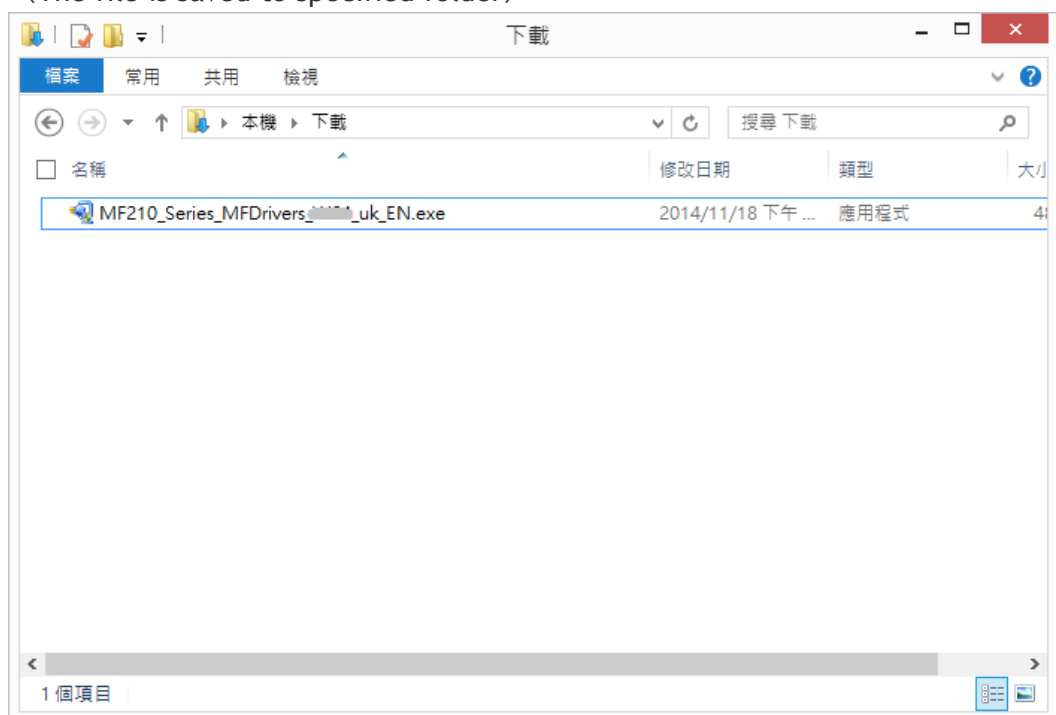
4. 選擇 <選擇有線/無線區域網路>，然後按  (Select <Select Wired/Wireless LAN>, and press .)

5. 選擇 <有線區域網路>，然後按  (Select <Wired LAN> or <Wireless LAN>, and press .)

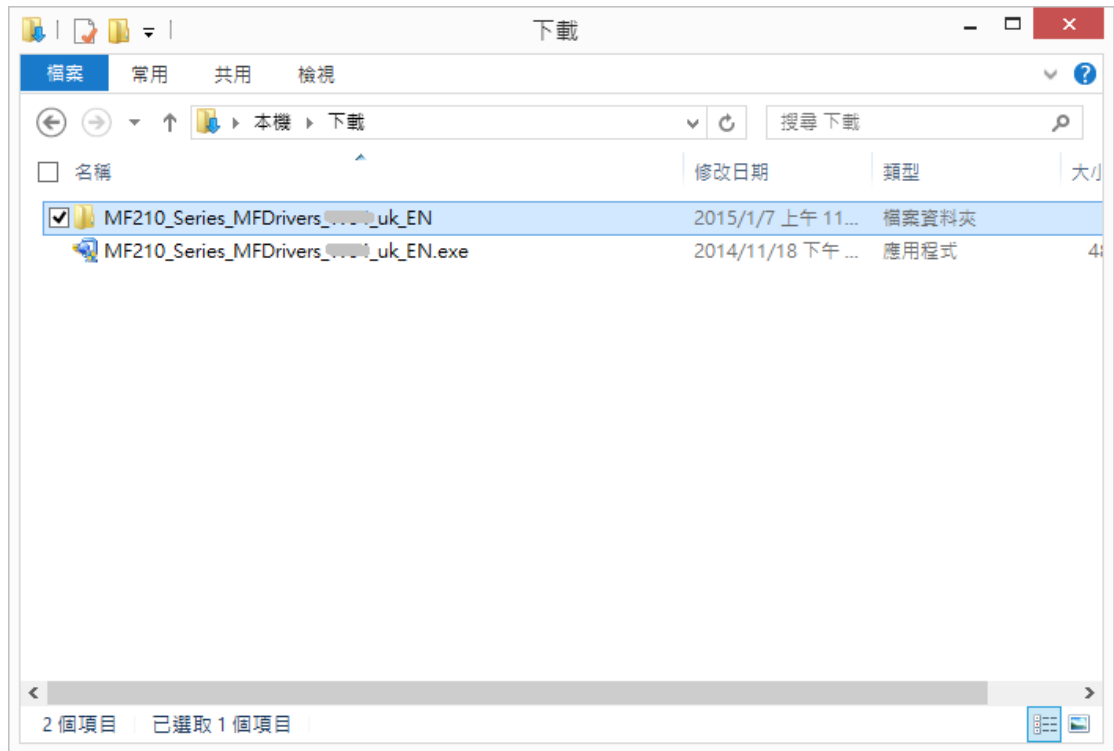


6. 按  (Press .)

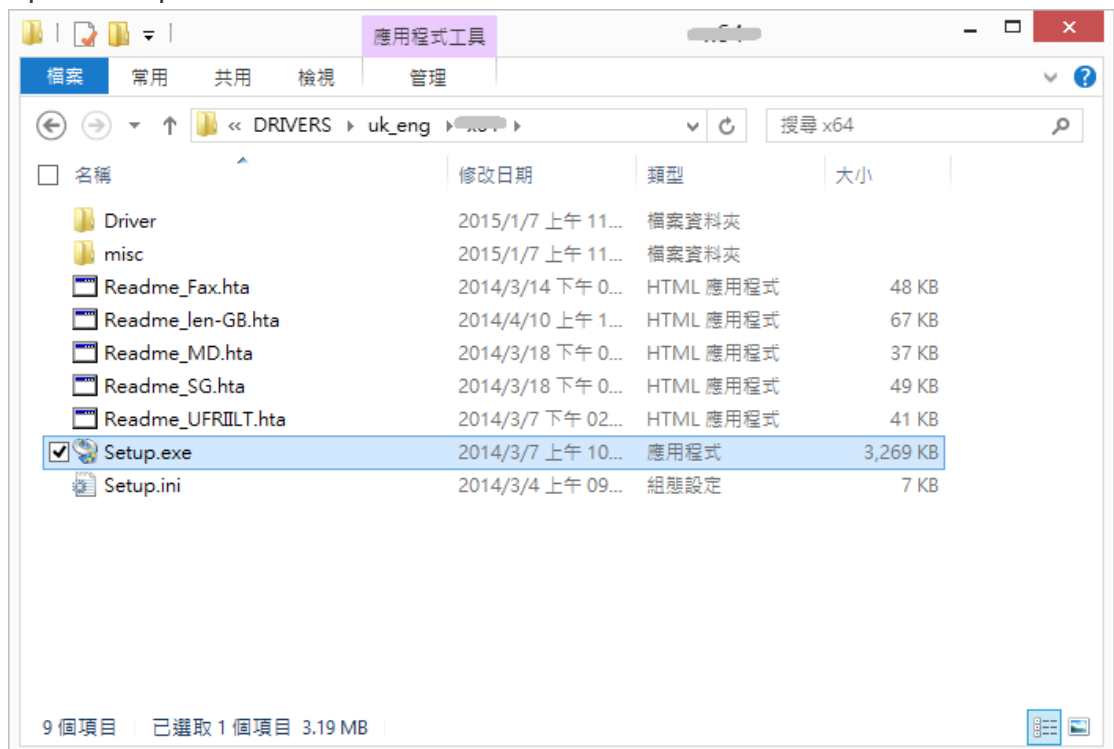
7. 等待約 2 分鐘 (Wait approximately 2 minutes.)
  - 等待時，會自動設定 IP 位址 (While you wait, the IP address is set automatically.)
8. 按電郵的連結下載驅動程式檔案  
(Click the link on email and download the printer driver)  
**\*\* 注意：如瀏覽器詢問「儲存」還是「執行」檔案，請務必選擇「儲存」**  
**\*\* Caution: If the browser asks “Run” or “Save”, please click “Save”**
9. 下載的文件以自解壓縮檔檔案 (.exe格式) 保存在指定的文件夾中。  
(The file is saved to specified folder)



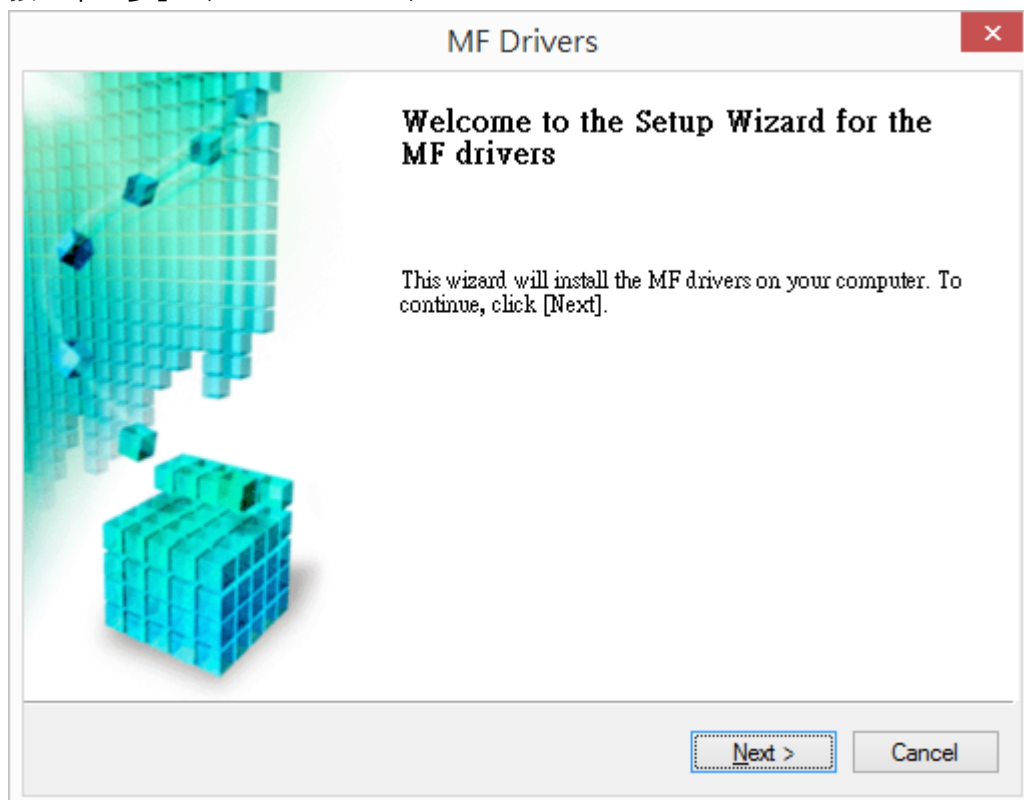
10. 打開文件解壓縮。將在同一文件夾中創建新文件夾。新文件夾的名稱與解壓縮文件的名稱相同。(Double click / Open “MF210\_\*\*\*.exe”, a new folder will be created.)
- 如打開文件解壓縮時出現「使用者帳戶控制」選項，請按「是」。(If “User Account Control” window pop-up. Choose “Yes”)



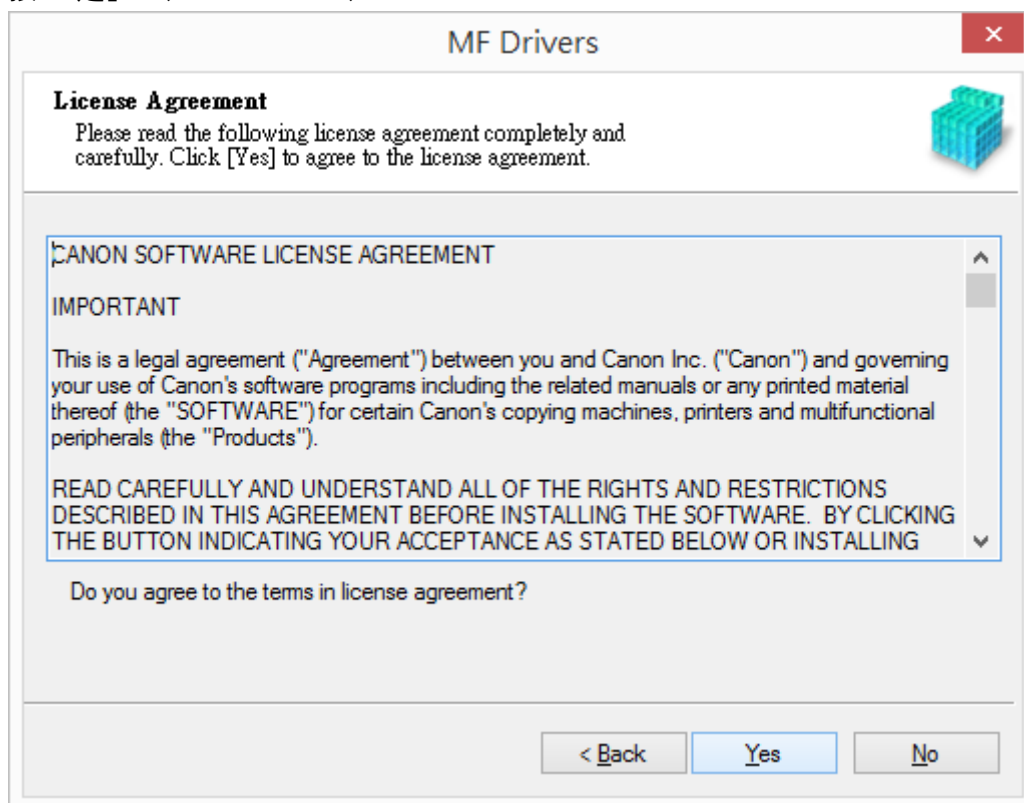
11. 進入“Drivers/uk\_eng/32bit 或 x64/”，打開解壓縮後的“Setup.exe”文件開始安裝。(Go into “Drivers” > “uk\_eng” > “32bit” or “x64”, then Double Click / Open “Setup.exe”)



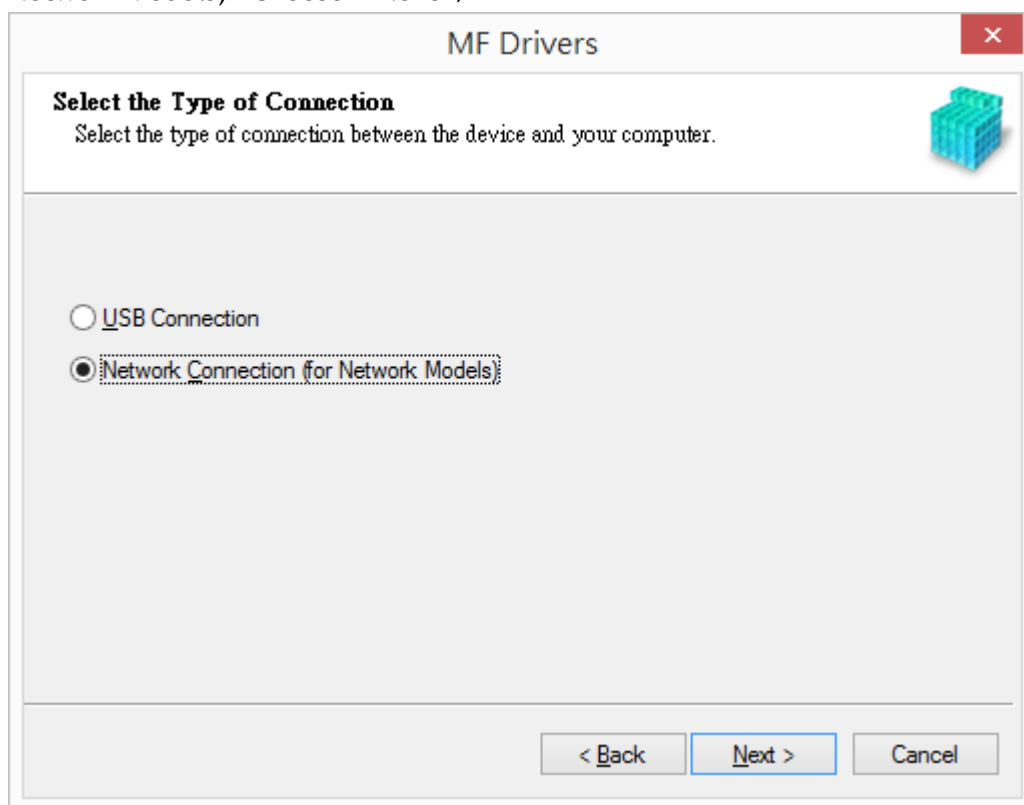
12. 按「下一步」 (Choose "Next")



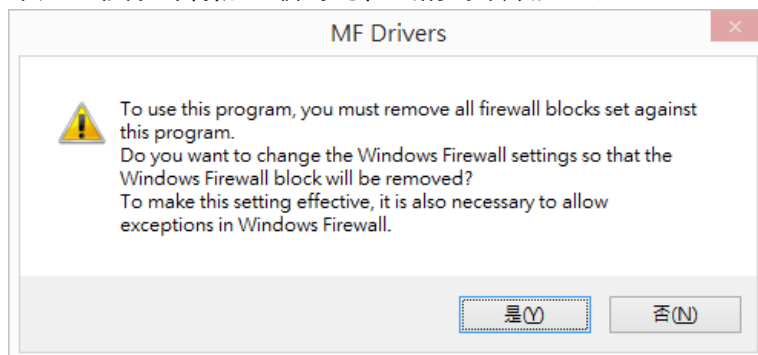
13. 按「是」 (Choose "Yes")



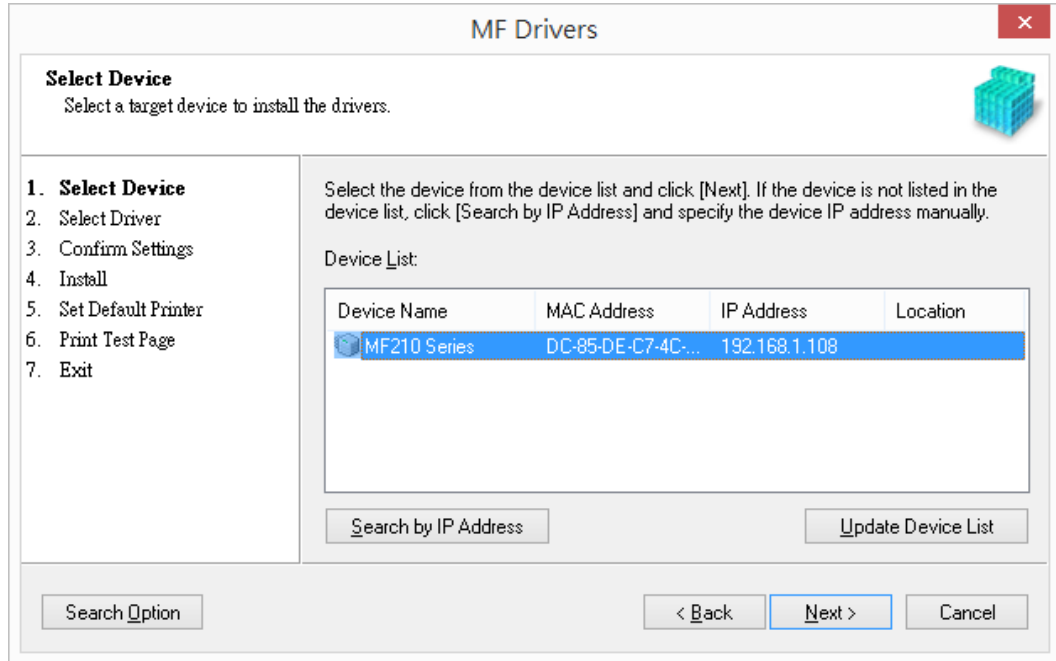
14. 選擇「網路連線（適用於網路型號）(C)」 (Select “Network Connection (for Network Models)” Choose “Next”)



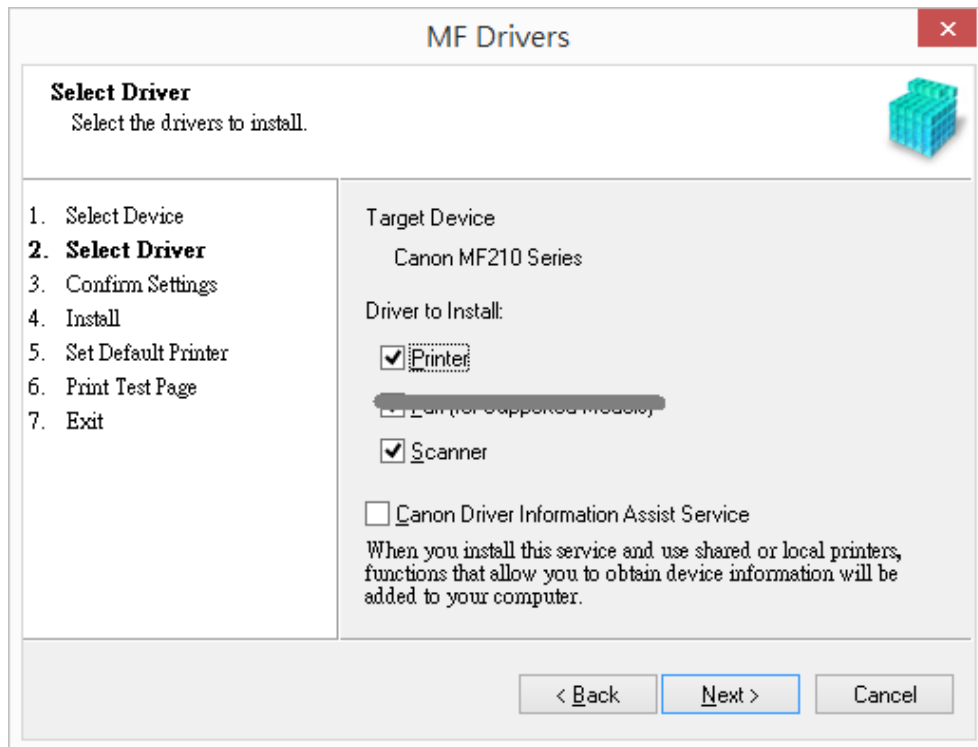
15. 確定已移除所有防火牆對此程式的封鎖設定 (Choose “Yes”)



16. 按「下一步」 (Choose “Next”)



17. 按「下一步」 (Choose “Next”)



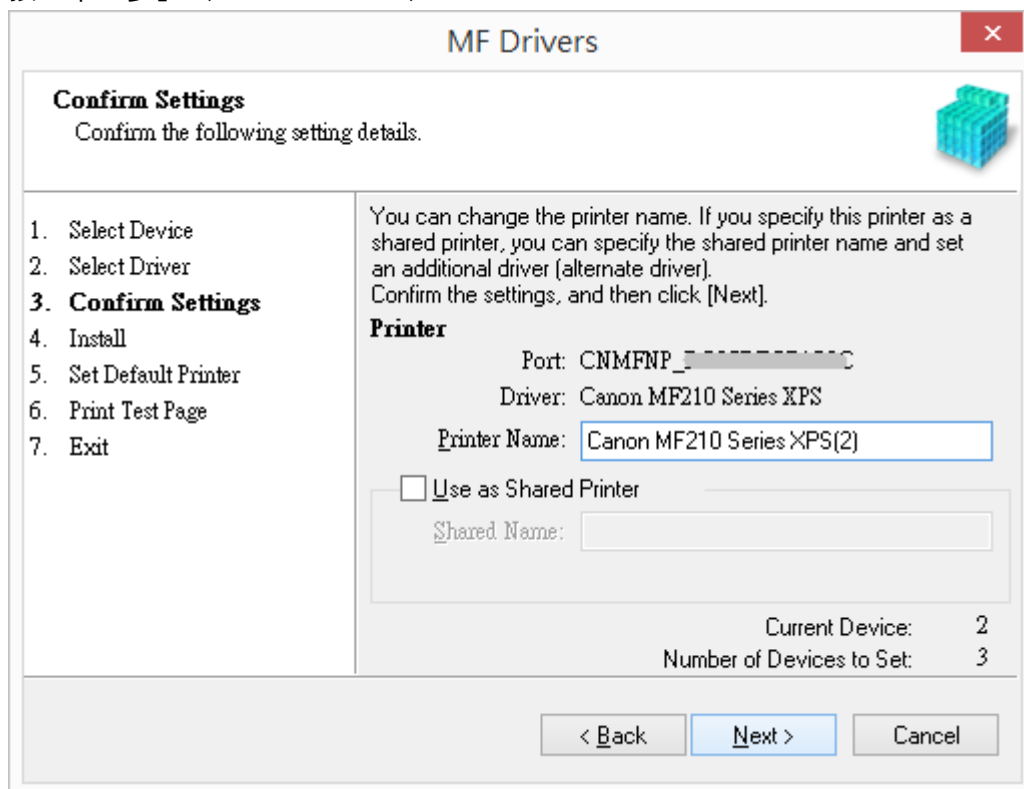
18. 按「下一步」 (Choose “Next”)

The screenshot shows the 'MF Drivers' window with the 'Select Driver' step active. The window title is 'MF Drivers'. The main heading is 'Select Driver' with the instruction 'Select the drivers to install.' A progress list on the left shows steps 1 through 7, with '2. Select Driver' highlighted. The 'Target Device' is 'Canon MF210 Series'. Under 'Printer Drivers to Install', two options are checked: 'UFR II LT Printer Driver' and 'UFR II LT XPS Printer Driver'. At the bottom are buttons for '< Back', 'Next >', and 'Cancel'.

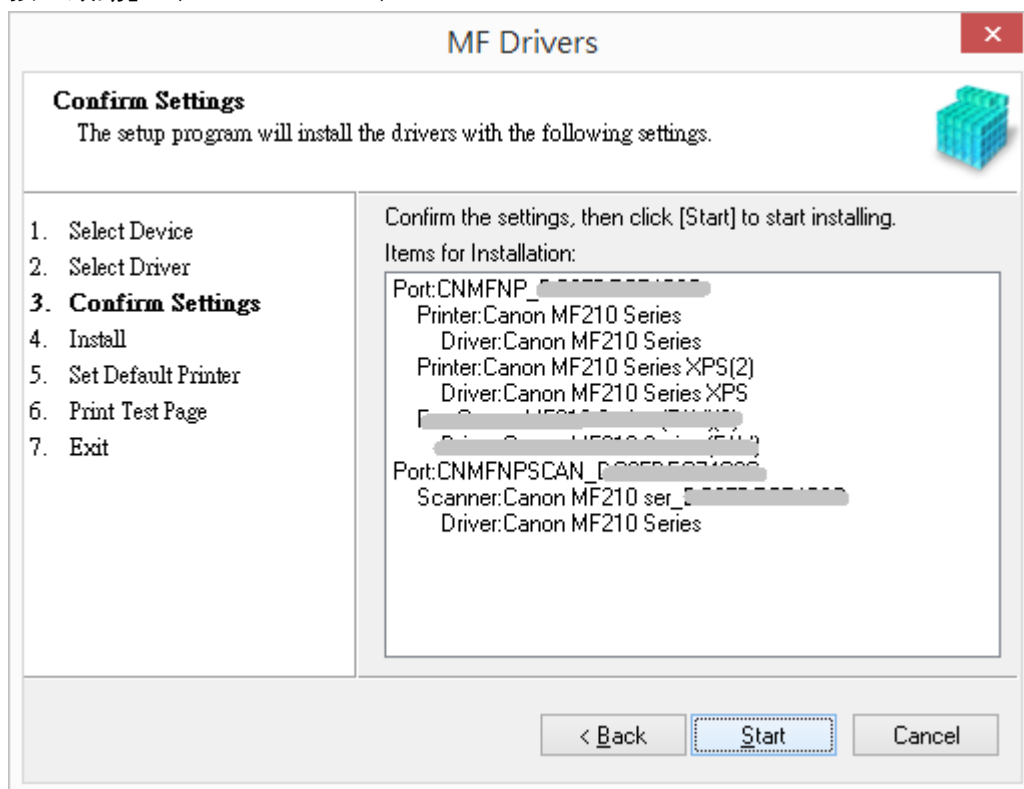
19. 按「下一步」 (Choose “Next”)

The screenshot shows the 'MF Drivers' window with the 'Confirm Settings' step active. The window title is 'MF Drivers'. The main heading is 'Confirm Settings' with the instruction 'Confirm the following setting details.' A progress list on the left shows steps 1 through 7, with '3. Confirm Settings' highlighted. The main area contains instructions: 'You can change the printer name. If you specify this printer as a shared printer, you can specify the shared printer name and set an additional driver (alternate driver). Confirm the settings, and then click [Next].' Below this is a 'Printer' section with fields for 'Port: CNMFNP\_...', 'Driver: Canon MF210 Series', and 'Printer Name: Canon MF210 Series'. There is a checkbox for 'Use as Shared Printer' which is unchecked, and a 'Shared Name:' field below it. At the bottom right, it shows 'Current Device: 1' and 'Number of Devices to Set: 3'. At the bottom are buttons for '< Back', 'Next >', and 'Cancel'.

20. 按「下一步」 (Choose “Next”)

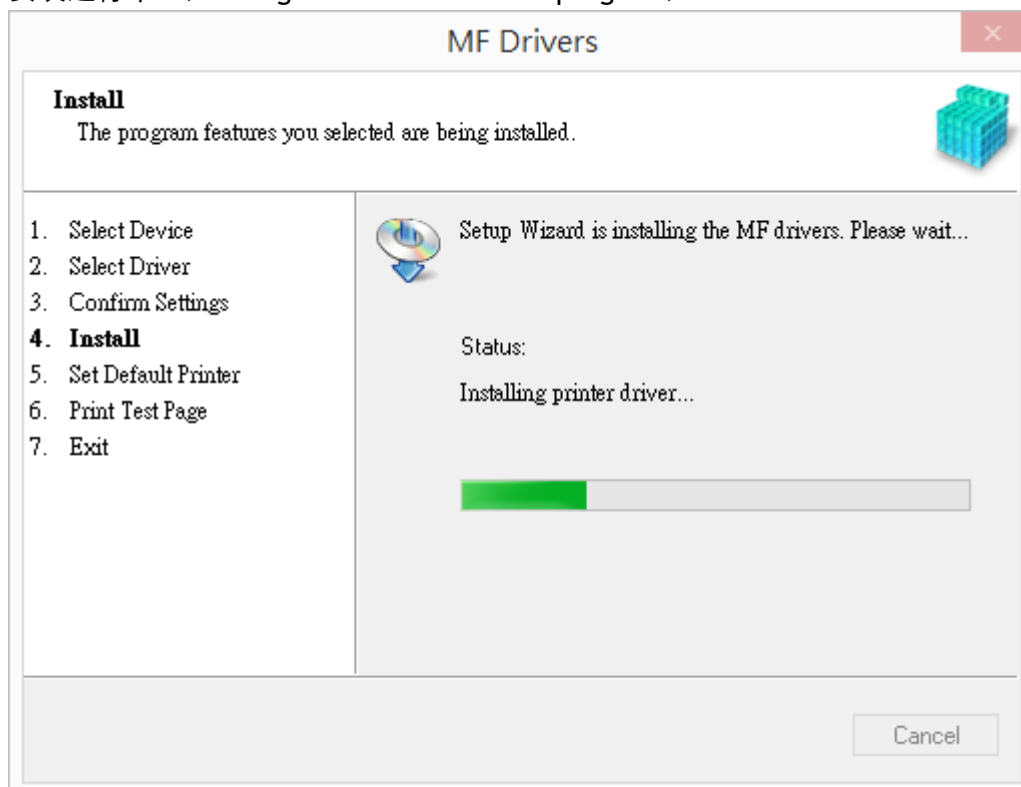


21. 按「啟動」 (Choose “Next”)

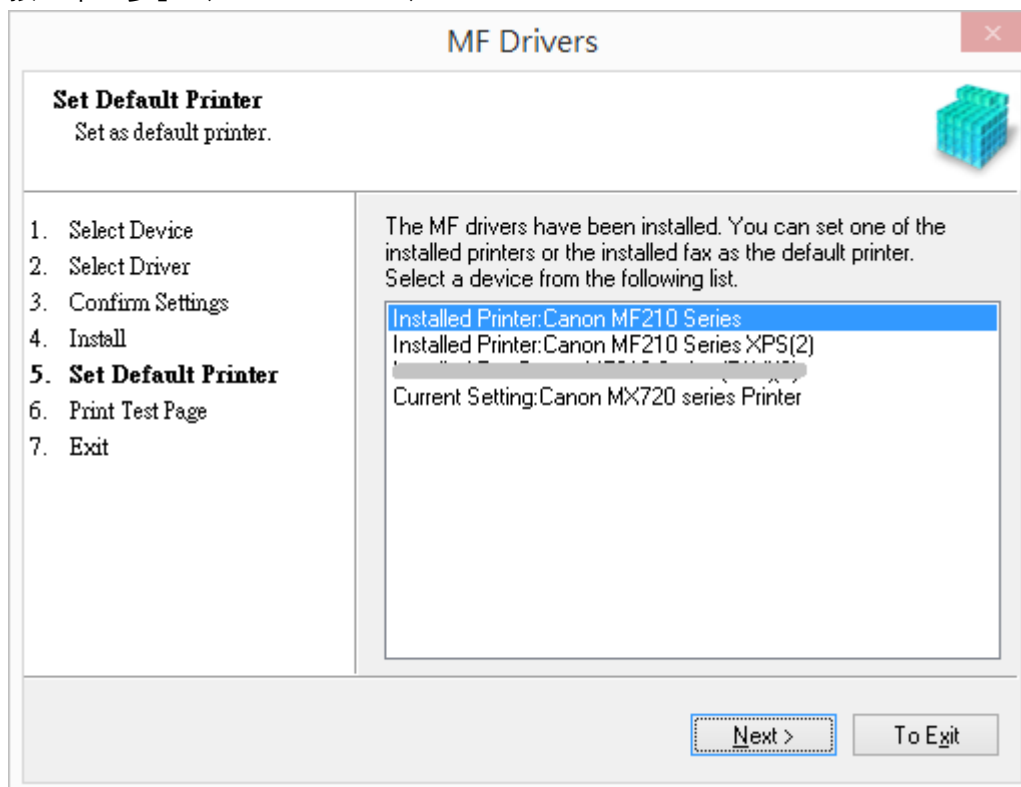




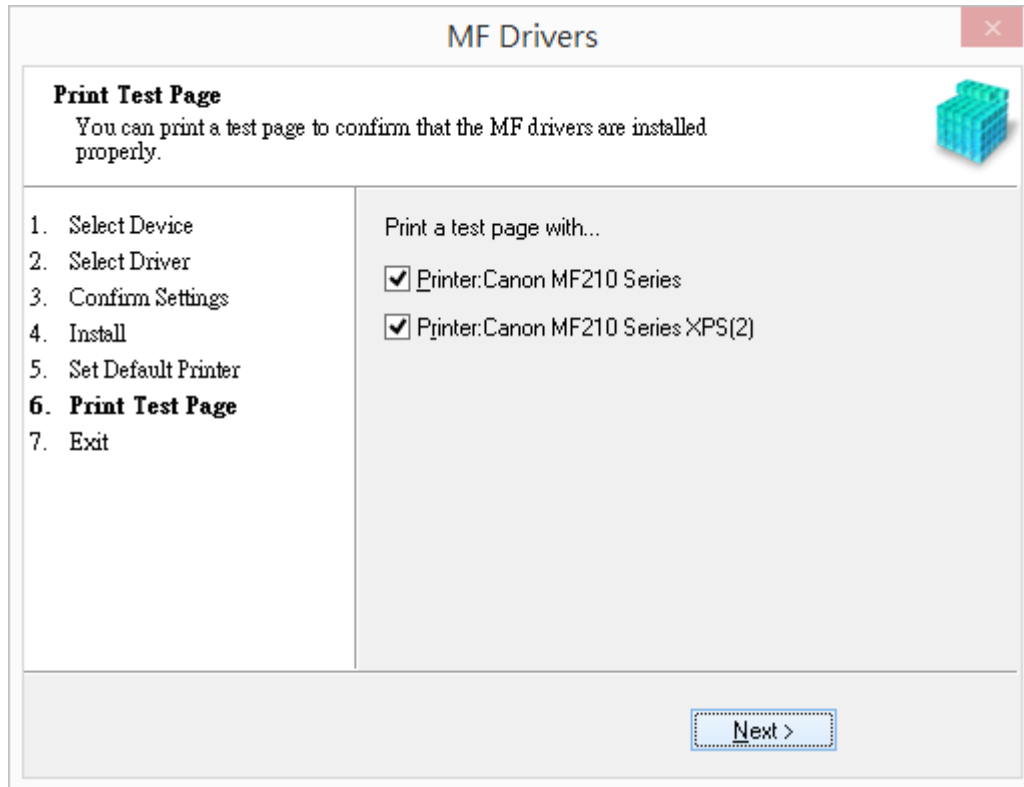
22. 安裝進行中 (Waiting for the installation progress)



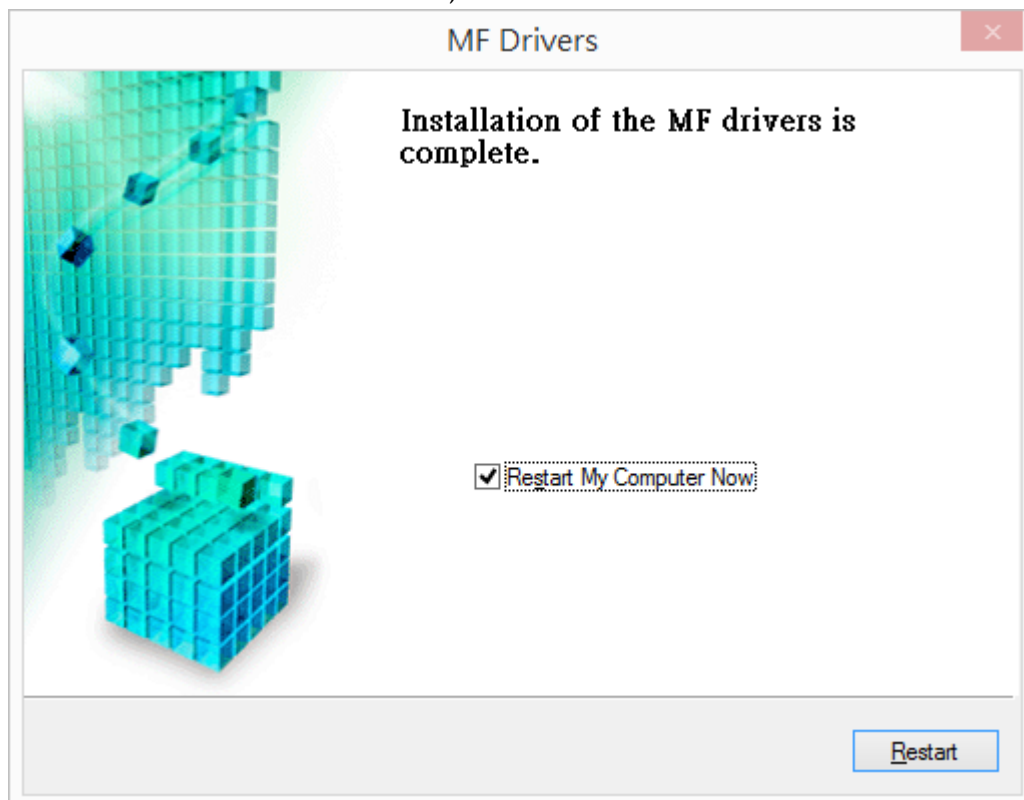
23. 按「下一步」 (Choose "Next")



24. 按「下一步」 (Choose “Next”)



25. 按「Restart」後會自動重啟電腦，完成安裝 (Press 「Restart」 then computer will restart and finish installation)



26. 按電郵的連結下載MF Tool Box程式檔案

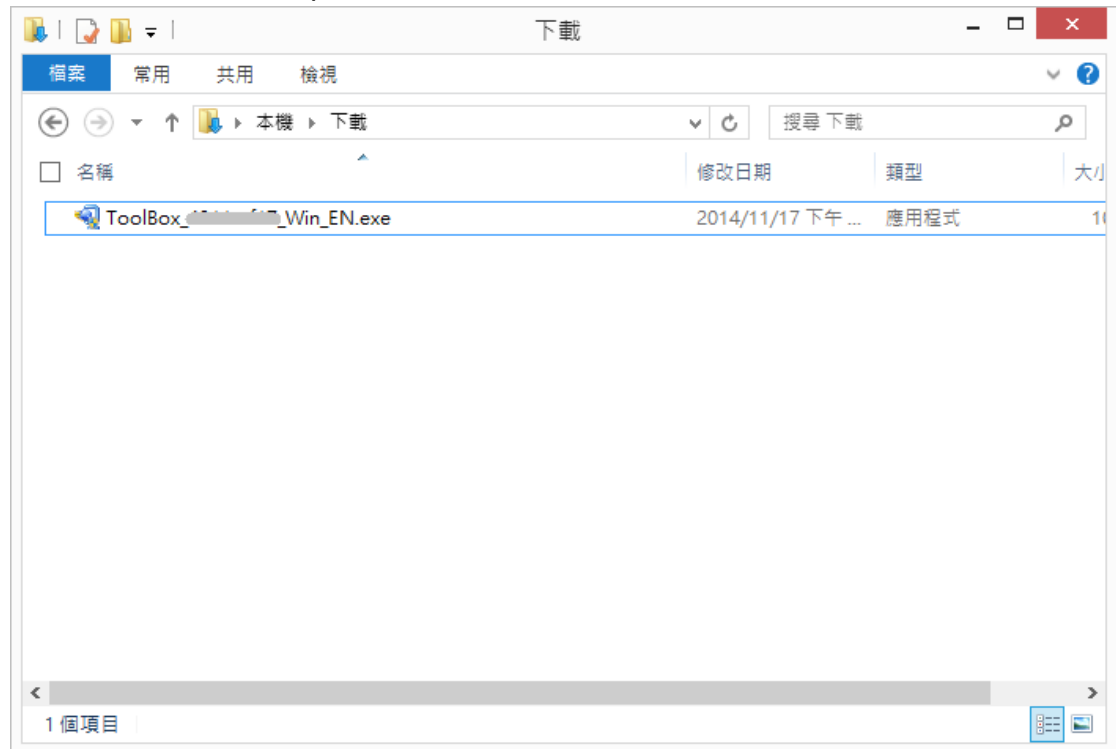
(Click the link on email and download the MF Tool Box)

\*\* 注意：如瀏覽器詢問「儲存」還是「執行」檔案，請務必選擇「儲存」

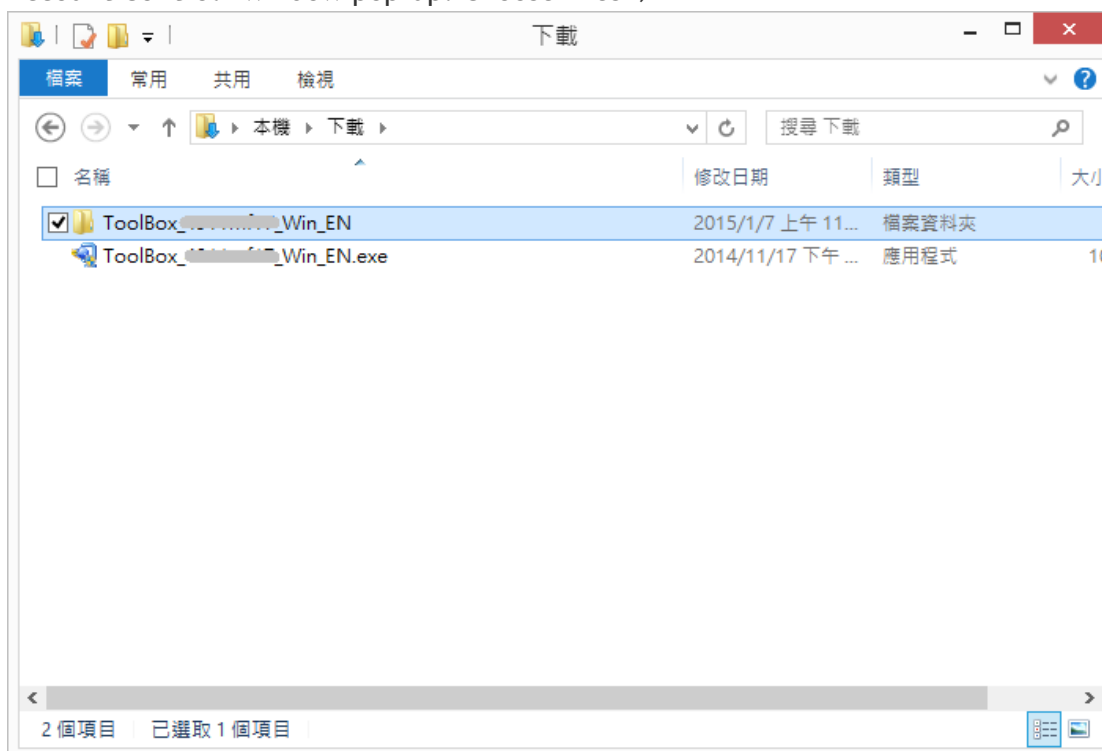
\*\* Caution: If the browser asks “Run” or “Save”, please click “Save”

27. 下載的文件以自解壓縮檔檔案（.exe格式）保存在指定的文件夾中。

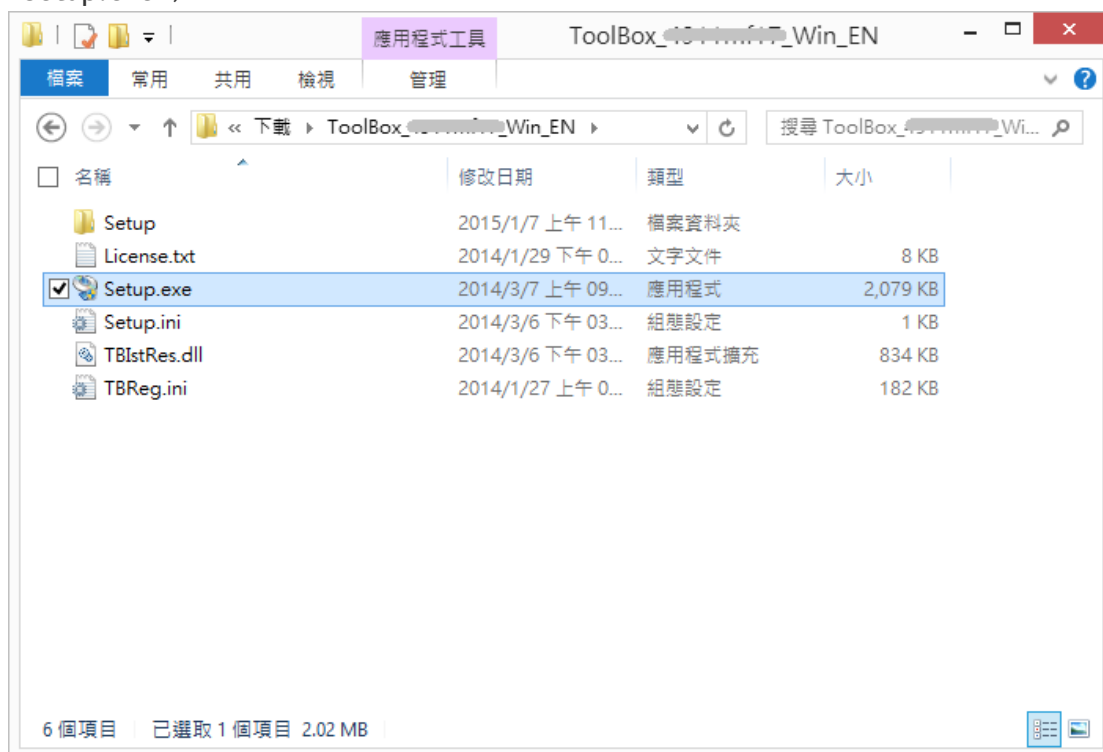
(The file is saved to specified folder)



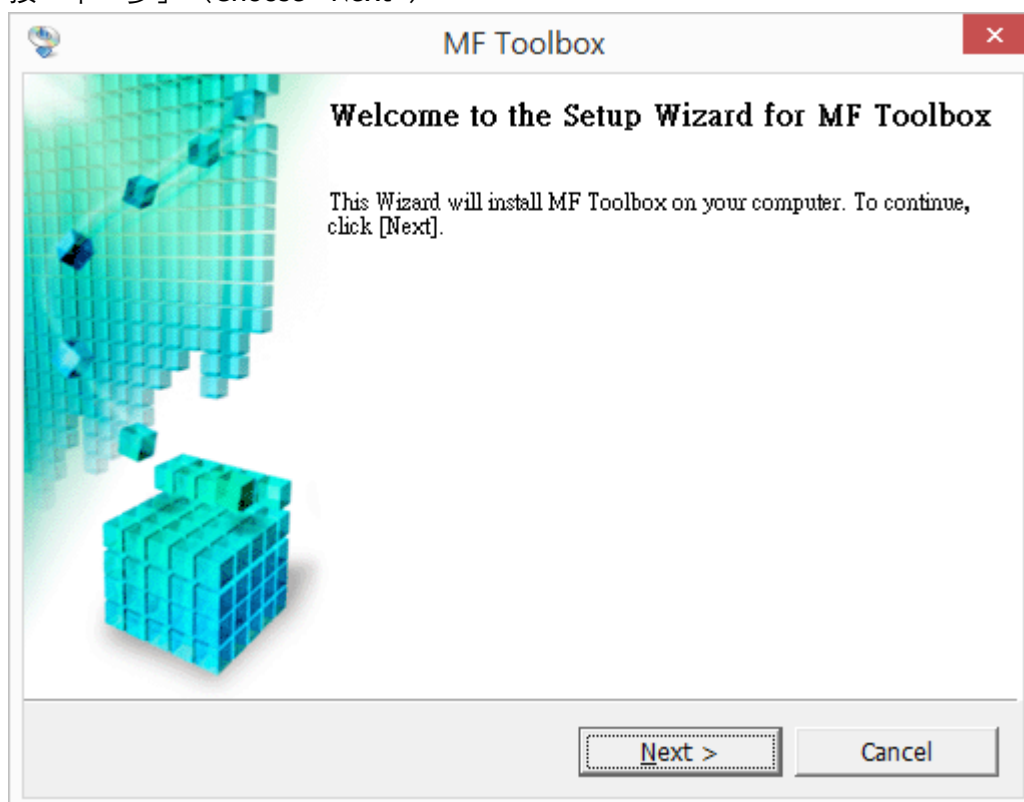
28. 打開文件解壓縮。將在同一文件夾中創建新文件夾。新文件夾的名稱與解壓縮文件的名稱相同。(Open “ToolBox\_\*\*\*.exe”, a new folder will be created.)
- 如打開文件解壓縮時出現「使用者帳戶控制」選項，請按「是」。(If “User Account Control” window pop-up. Choose “Yes”)



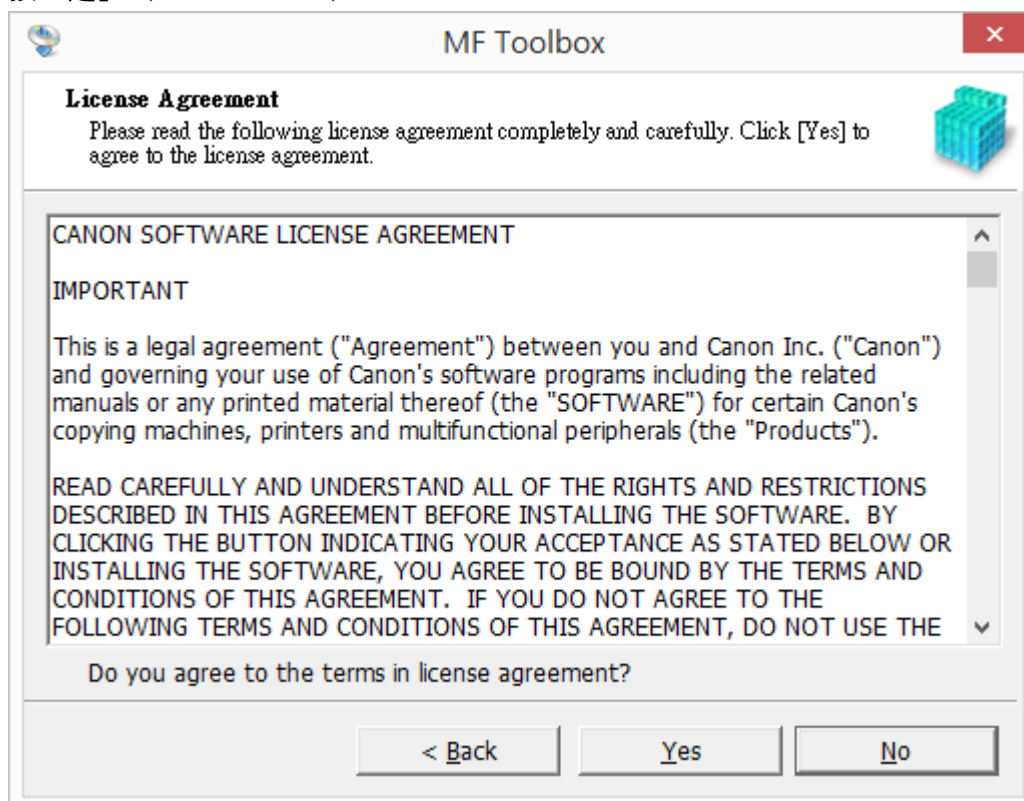
29. 打開解壓縮後的「Setup.exe」文件開始安裝。(Double click / open “Setup.exe”)



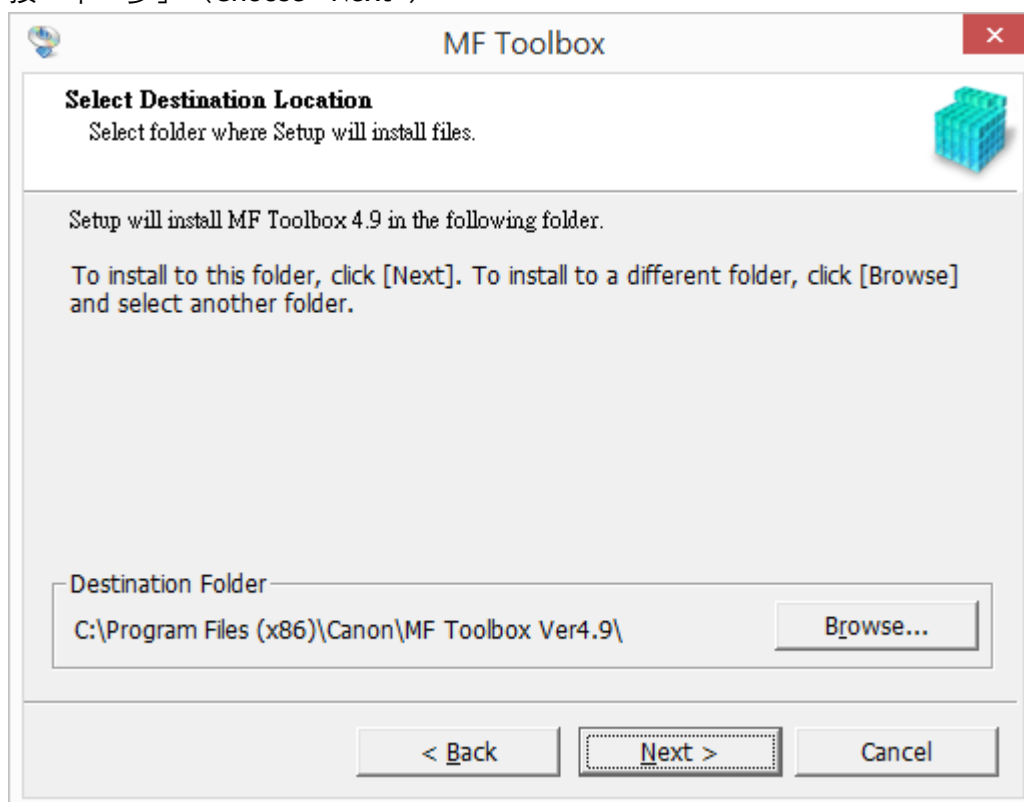
30. 按「下一步」 (Choose "Next")



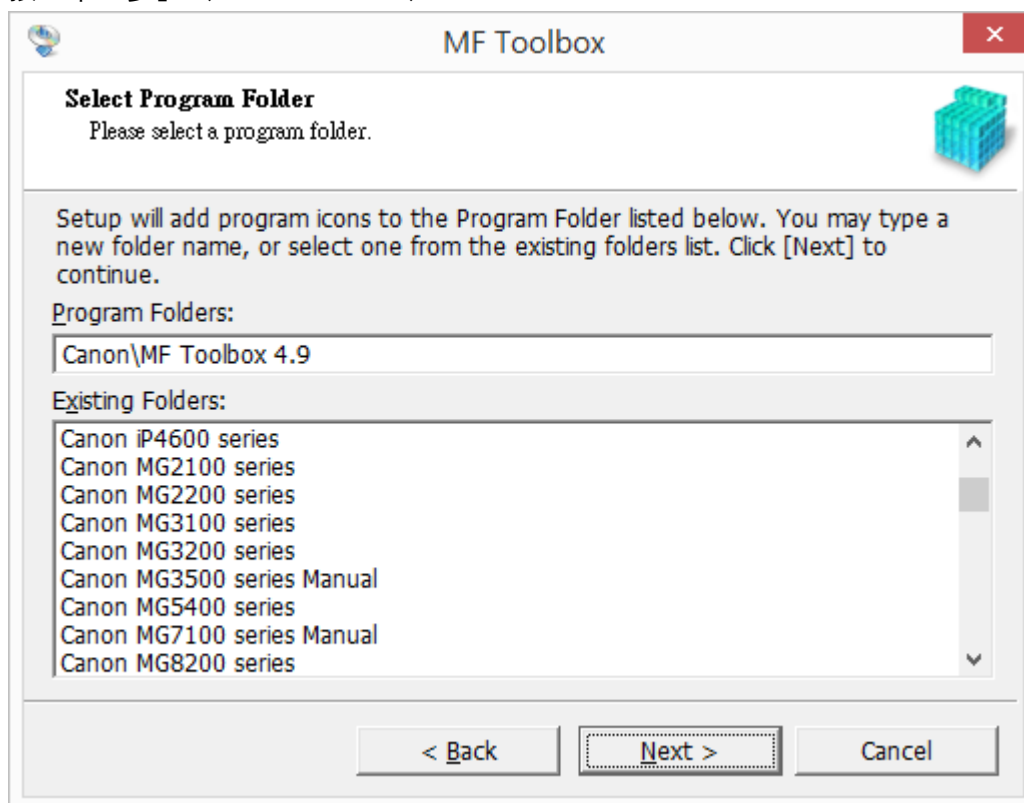
31. 按「是」 (Choose "Yes")



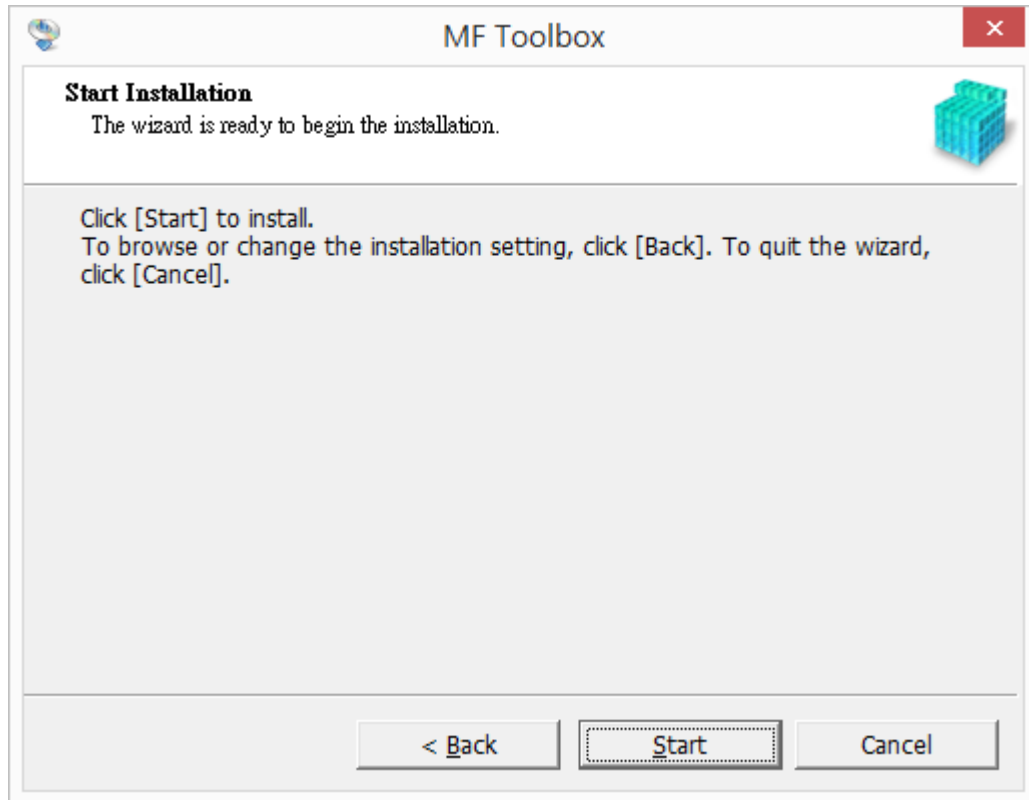
32. 按「下一步」 (Choose “Next”)



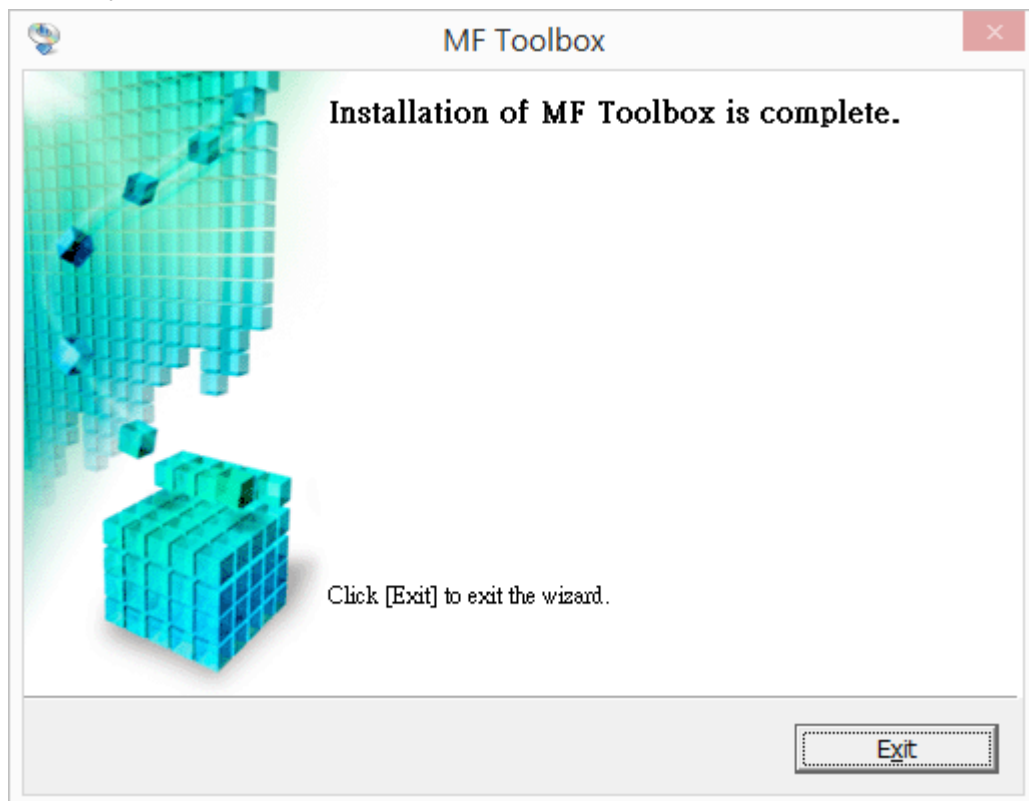
33. 按「下一步」 (Choose “Next”)



34. 按「開始」 (Choose “Start”)



35. 按「結束」 (Choose “Exit”)



-完-

-End-