

MF217w Win 8.1 透過無線 LAN 連線連接印表機安裝驅動程式步驟

先將打印機連接到路由器，詳細可參考以下步驟：

1. 在主畫面中點選「功能表」
2. 點選「網路設定」
 - 若顯示 PIN 碼輸入畫面，使用數字鍵輸入 PIN 碼，然後點選「套用」
3. 點選「無線區域網路」
 - 若顯示 <是否啟用無線區域網路？> 訊息，點選 <是>。



4. 讀取顯示的訊息，然後點選 <完成>。
5. 點選 <SSID 設定>。

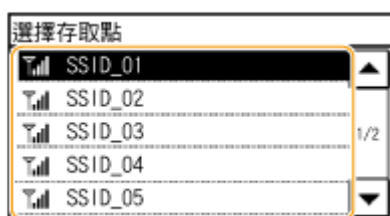


6. 點選 <選擇存取點>。



7. 選擇無線區域網路路由器。

選擇與您記下的 SSID 相符的路由器。

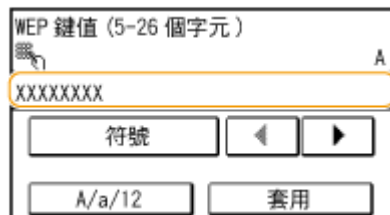


8. 輸入您記下的網路鍵值。

使用數字鍵輸入網路金鑰(路由器密碼)，然後點選<套用>。

輸入文字

WEP



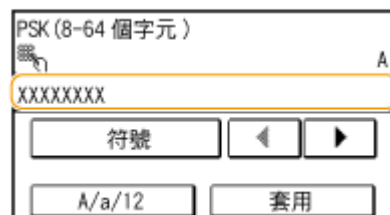
WEP 鍵值 (5-26 個字元)

XXXXXXXX

符號 ◀ ▶

A/a/12 套用

WPA-PSK 或 WPA2-PSK



PSK (8-64 個字元)

XXXXXXXX

符號 ◀ ▶

A/a/12 套用

9. 點選<是>。



是否使用新設定連線？

是 否

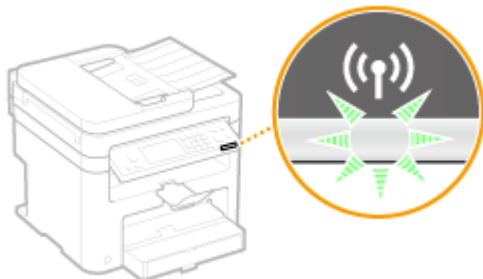
正在連線……

取消：按「停止」

⌚

10. 確認控制面板上的 Wi-Fi 指示燈閃爍。

偵測到無線路由器時，Wi-Fi 指示燈閃爍。



11. 設定完成時，會顯示以下畫面，約 2 秒後 Wi-Fi 指示燈隨即亮起。



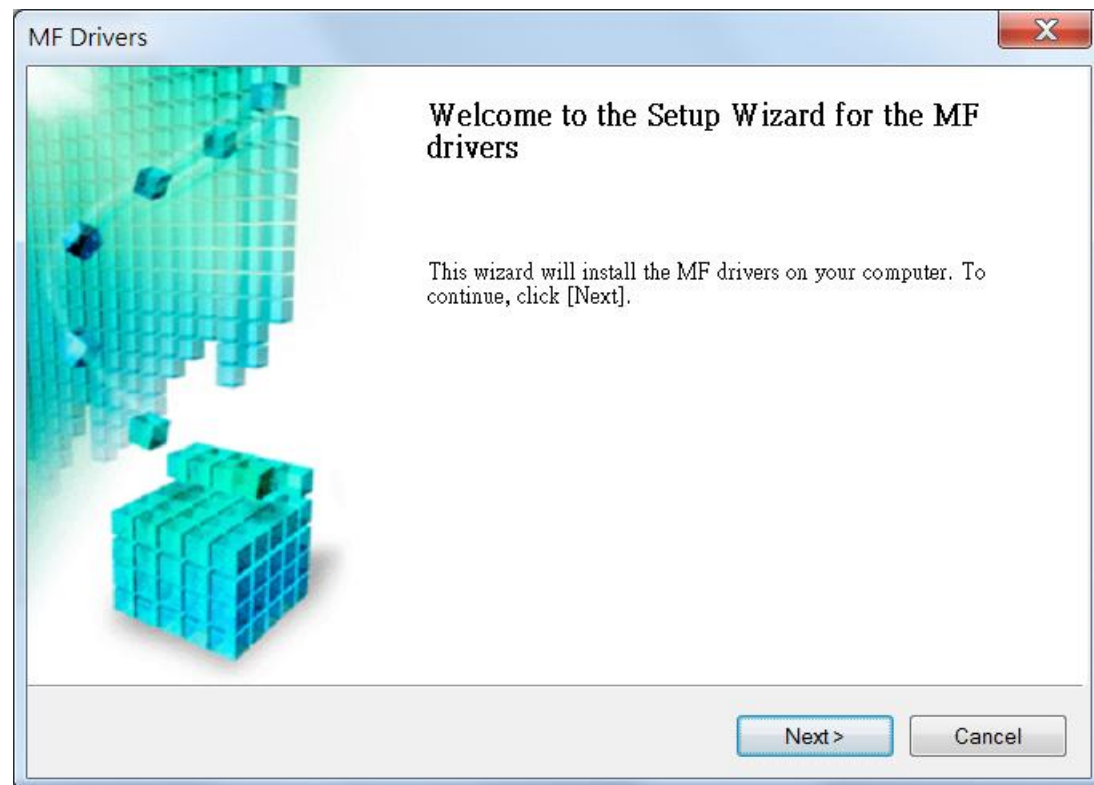
等待約 2 分鐘，直到本機的 IP 位址設定完成。

到佳能網站 <https://hk.canon/en/support> ，選擇相關的印表機型號及下載印表機的驅動程式

Go to: <https://hk.canon/en/support>, select related printer model, then download the printer driver

安裝步驟

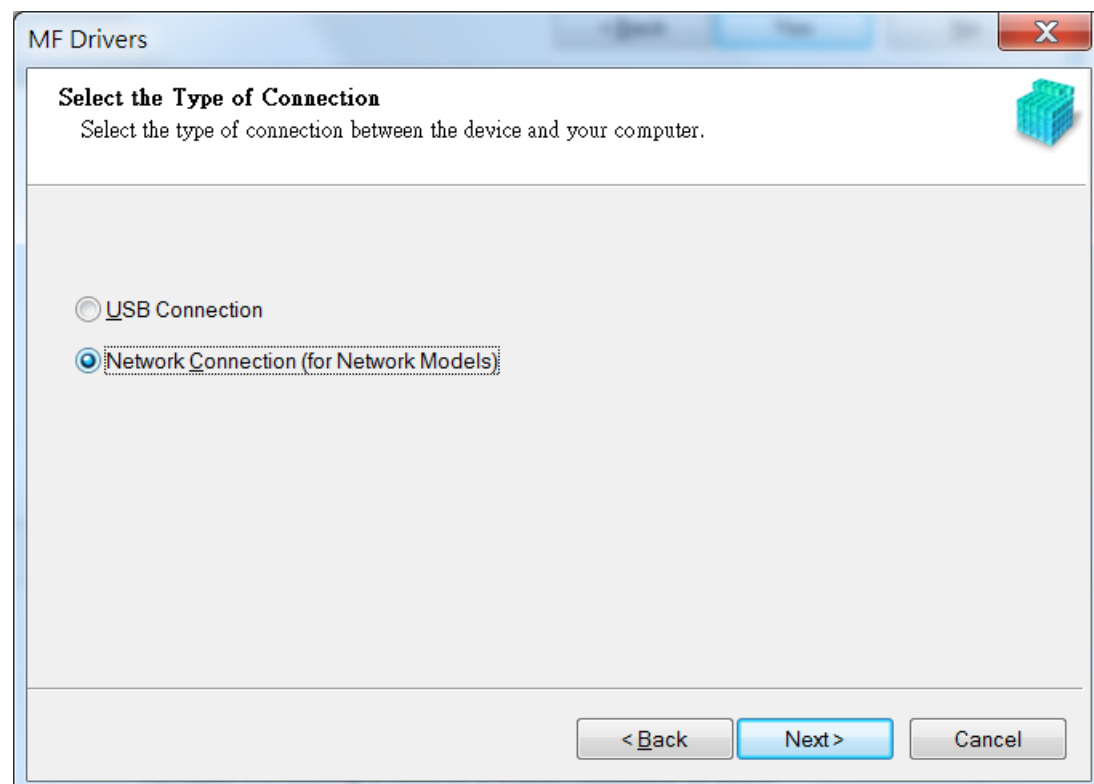
1. 打開安裝驅動程式 (MF Drivers) 安裝檔案
Open MF Driver Installation File
2. 按「Next」
Press 「Next」



3. 按「Yes」
Press 「Yes」



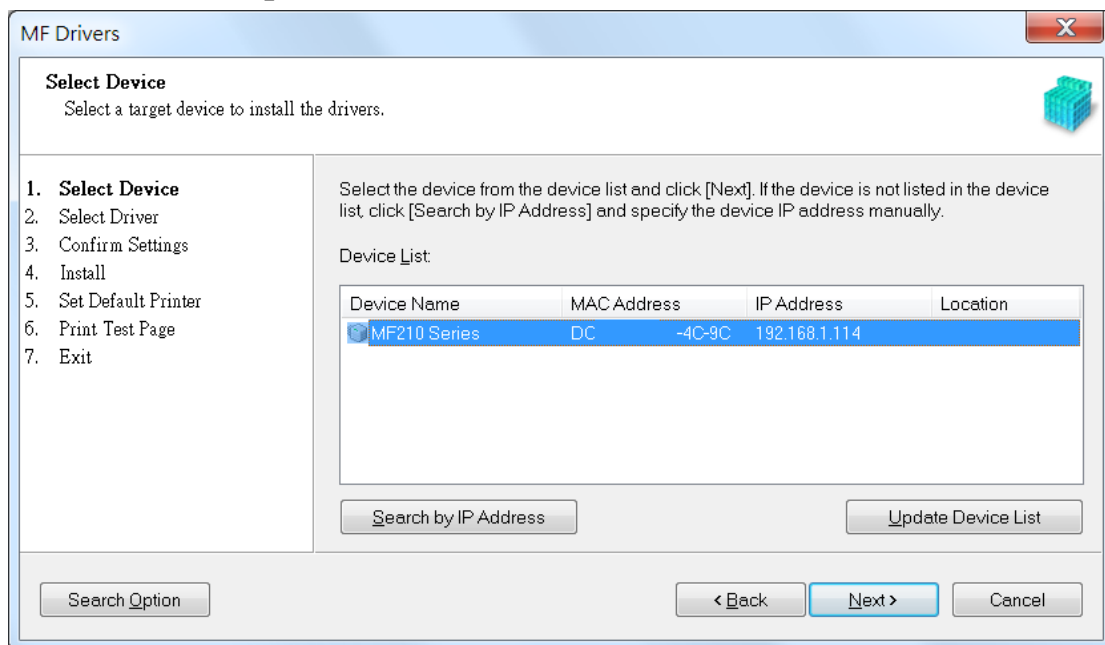
4. 選擇「Network Connection (for Network Models)」
Choose 「Network Connection (for Network Models)」



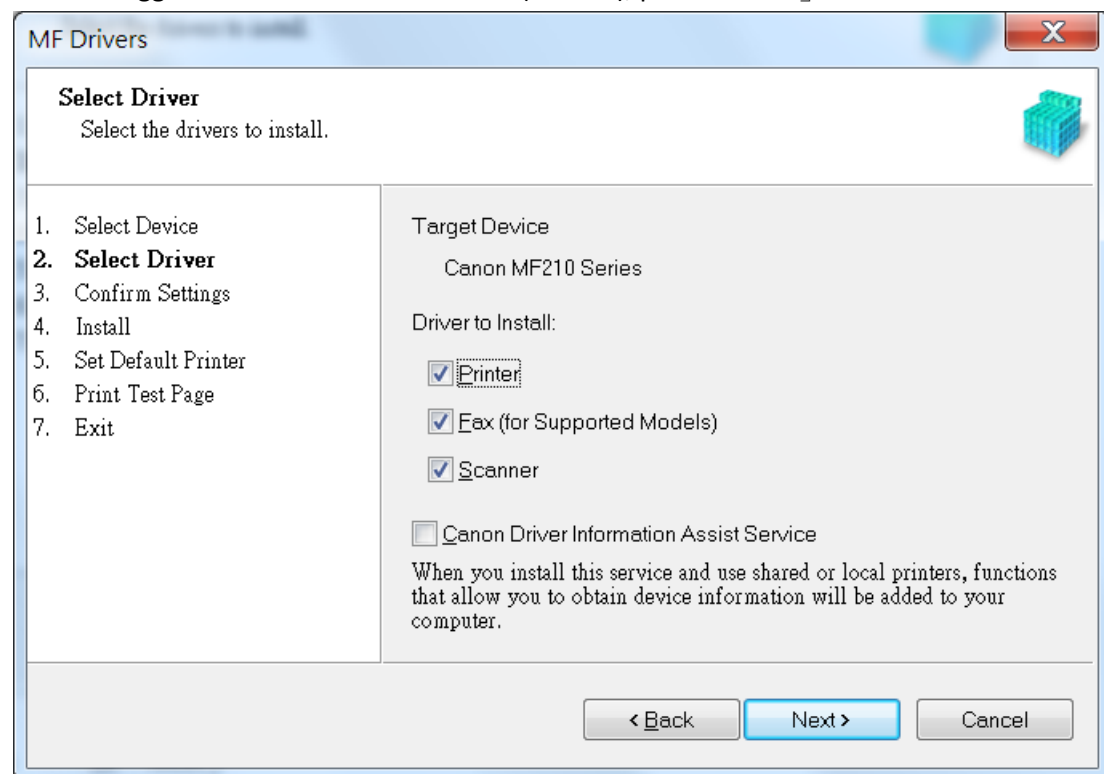
5. 搜尋裝置中
Searching for device...



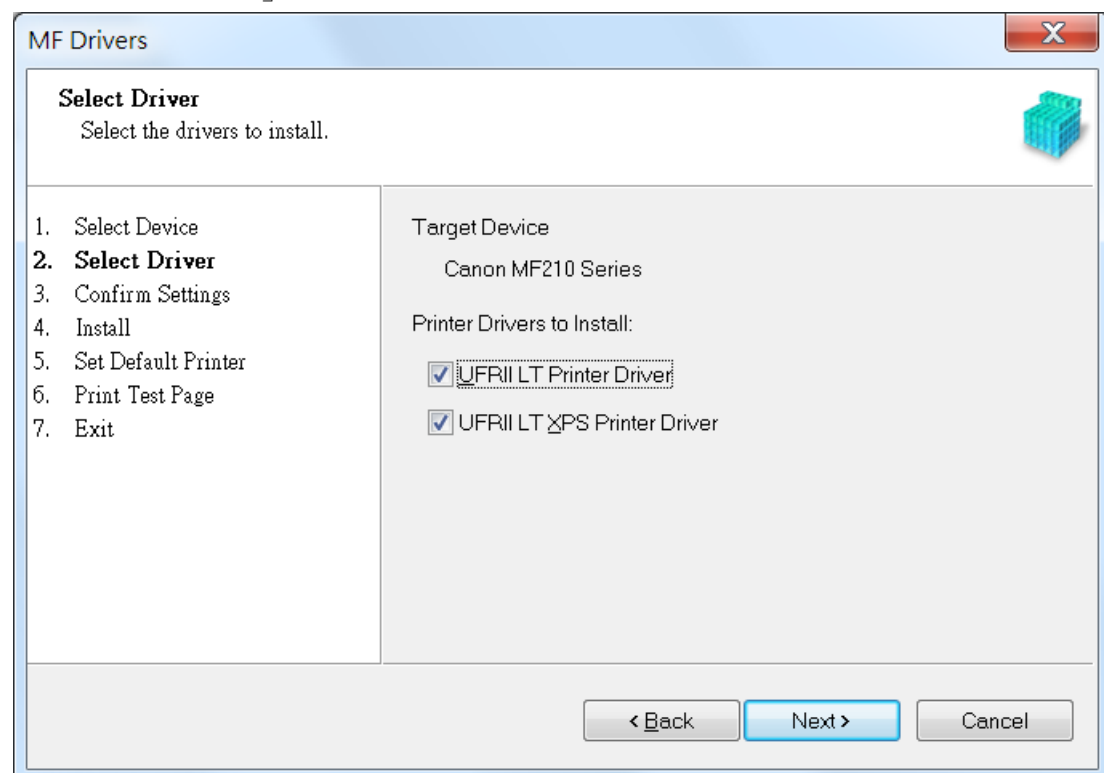
6. 按「Next」
Press 「Next」



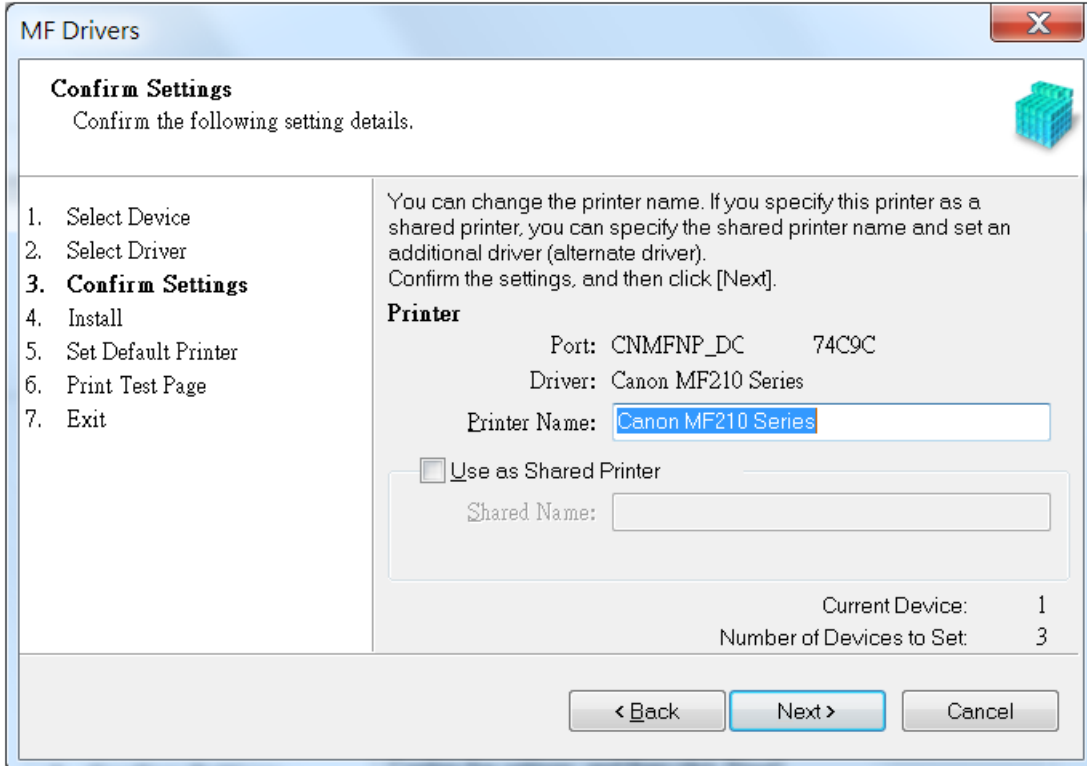
7. 建議選取所有驅動程式 (預設) , 按「Next」
Suggest choose all driver to install (Default), press 「Next」



8. 按「Next」
Press 「Next」



9. 按「Next」
Press「Next」



The dialog box is titled "MF Drivers" and has a close button (X) in the top right corner. Below the title bar, there is a "Confirm Settings" section with a sub-header "Confirm the following setting details." and a small printer icon. On the left, a list of steps is shown: 1. Select Device, 2. Select Driver, 3. Confirm Settings (highlighted), 4. Install, 5. Set Default Printer, 6. Print Test Page, and 7. Exit. The main area contains instructions: "You can change the printer name. If you specify this printer as a shared printer, you can specify the shared printer name and set an additional driver (alternate driver). Confirm the settings, and then click [Next].". Below this, the "Printer" section shows: Port: CNMFNP_DC 74C9C, Driver: Canon MF210 Series, and Printer Name: Canon MF210 Series (highlighted). There is a checkbox for "Use as Shared Printer" which is unchecked, and a "Shared Name:" field below it. At the bottom right, it shows "Current Device: 1" and "Number of Devices to Set: 3". At the very bottom are three buttons: "< Back", "Next >" (highlighted), and "Cancel".

MF Drivers

Confirm Settings
Confirm the following setting details.

1. Select Device
2. Select Driver
3. **Confirm Settings**
4. Install
5. Set Default Printer
6. Print Test Page
7. Exit

You can change the printer name. If you specify this printer as a shared printer, you can specify the shared printer name and set an additional driver (alternate driver). Confirm the settings, and then click [Next].

Printer

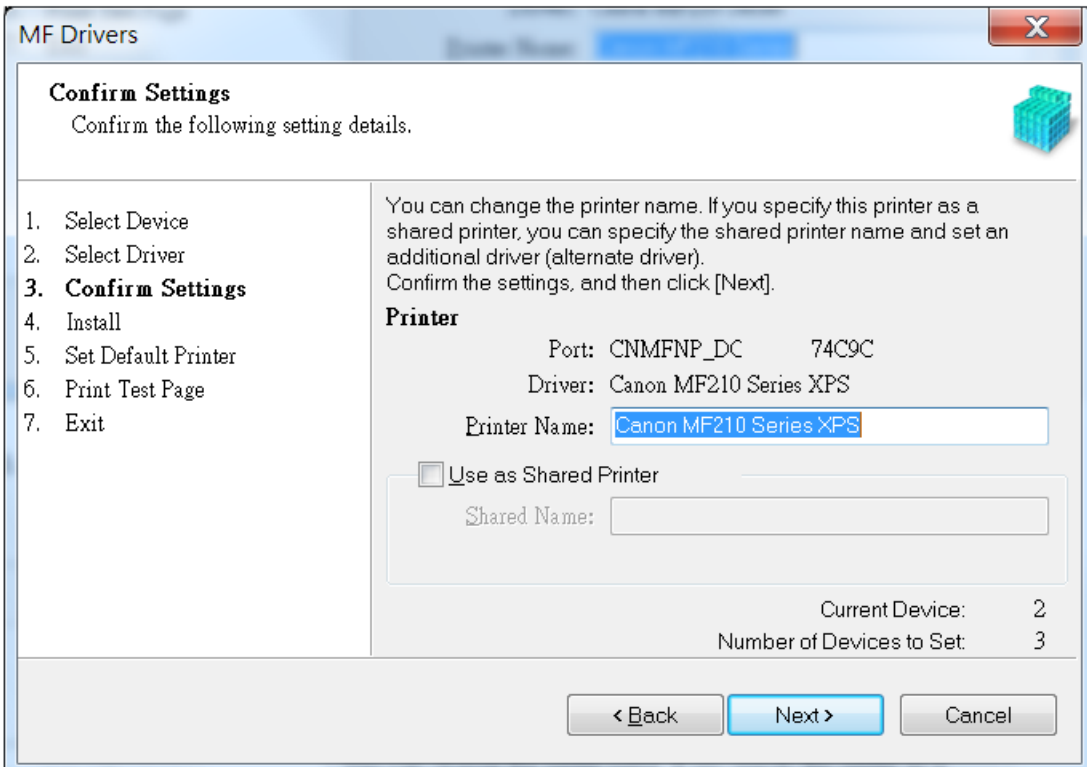
Port: CNMFNP_DC 74C9C
Driver: Canon MF210 Series
Printer Name: Canon MF210 Series

☐ Use as Shared Printer
Shared Name:

Current Device: 1
Number of Devices to Set: 3

< Back Next > Cancel

10. 按「Next」
Press「Next」



This dialog box is identical in layout to the previous one, but with some differences in the content. The "Printer Name" field now contains "Canon MF210 Series XPS" (highlighted). The "Driver" is now "Canon MF210 Series XPS". The "Current Device" count at the bottom right is now 2, while the "Number of Devices to Set" remains 3. The "Next >" button is still highlighted.

MF Drivers

Confirm Settings
Confirm the following setting details.

1. Select Device
2. Select Driver
3. **Confirm Settings**
4. Install
5. Set Default Printer
6. Print Test Page
7. Exit

You can change the printer name. If you specify this printer as a shared printer, you can specify the shared printer name and set an additional driver (alternate driver). Confirm the settings, and then click [Next].

Printer

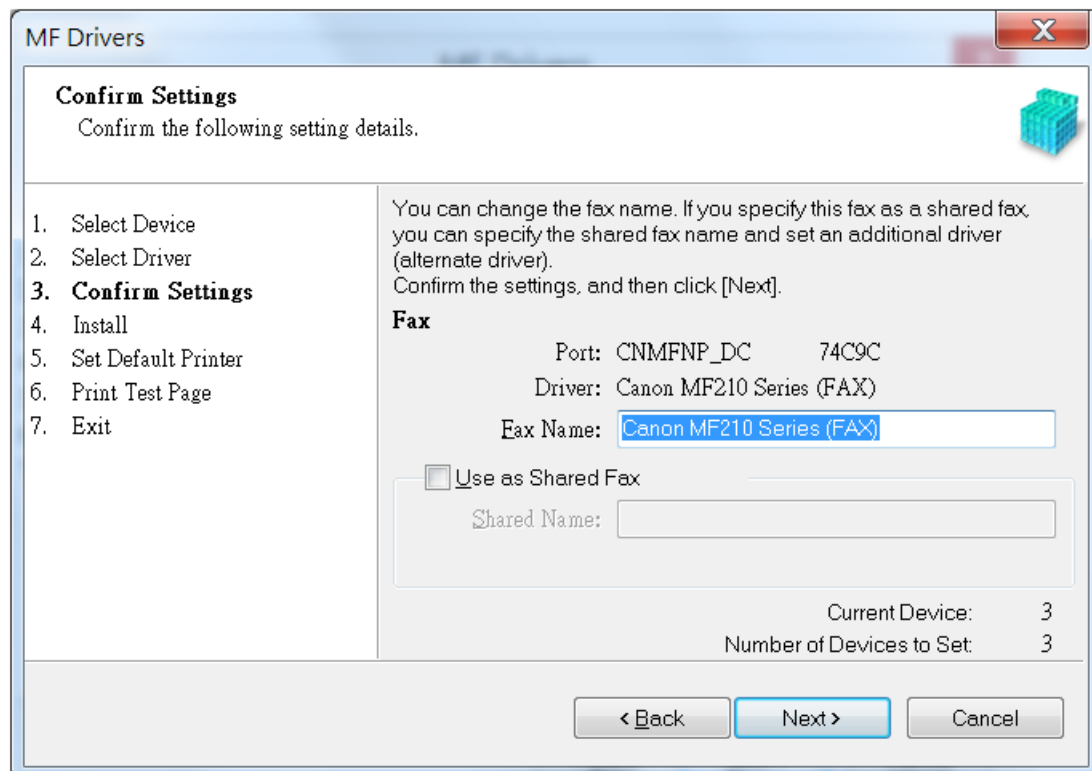
Port: CNMFNP_DC 74C9C
Driver: Canon MF210 Series XPS
Printer Name: Canon MF210 Series XPS

☐ Use as Shared Printer
Shared Name:

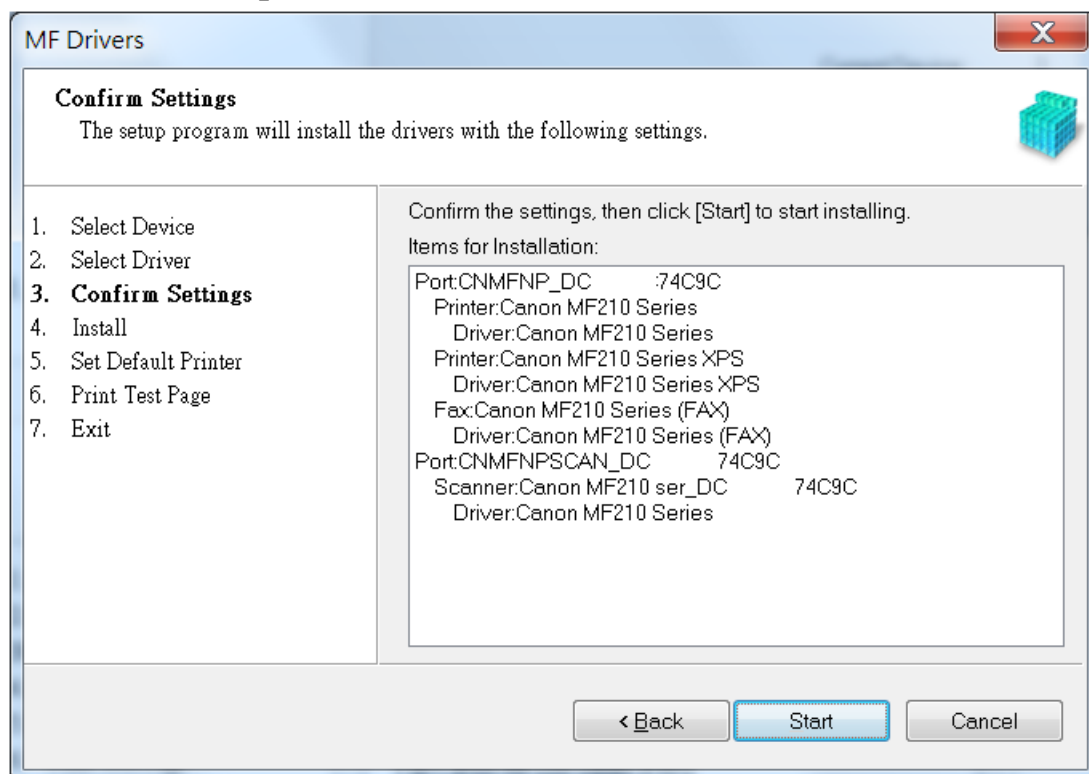
Current Device: 2
Number of Devices to Set: 3

< Back Next > Cancel

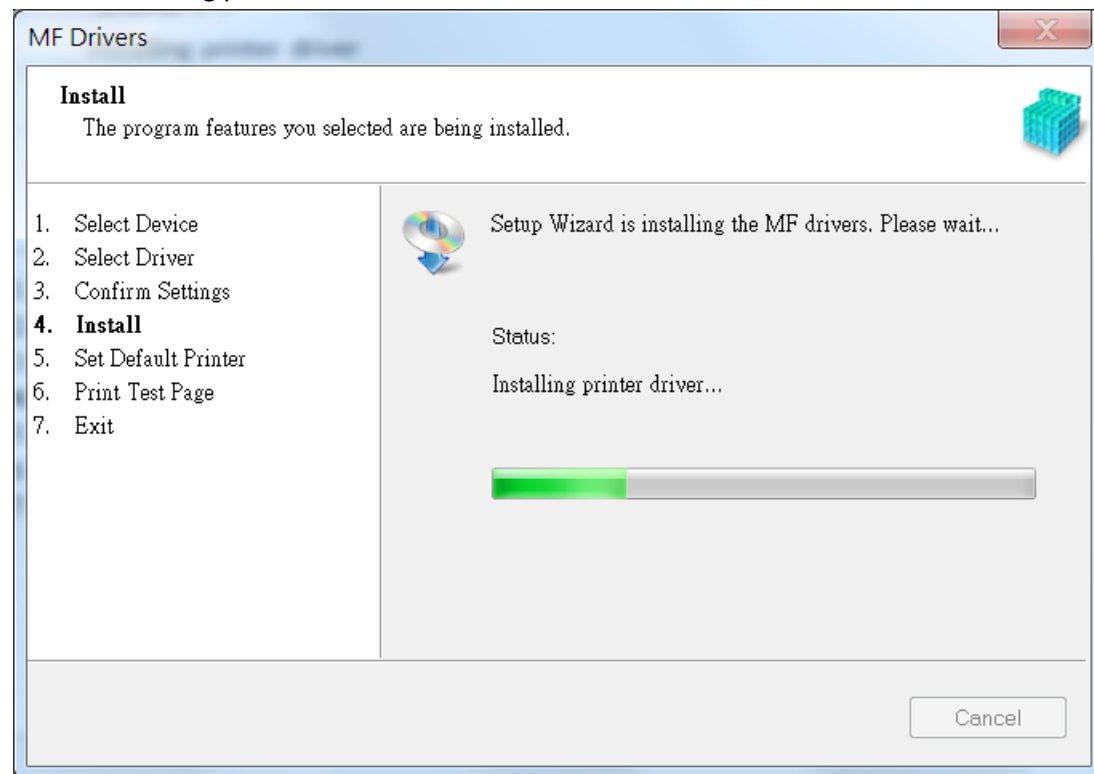
11. 按「Next」
Press 「Next」



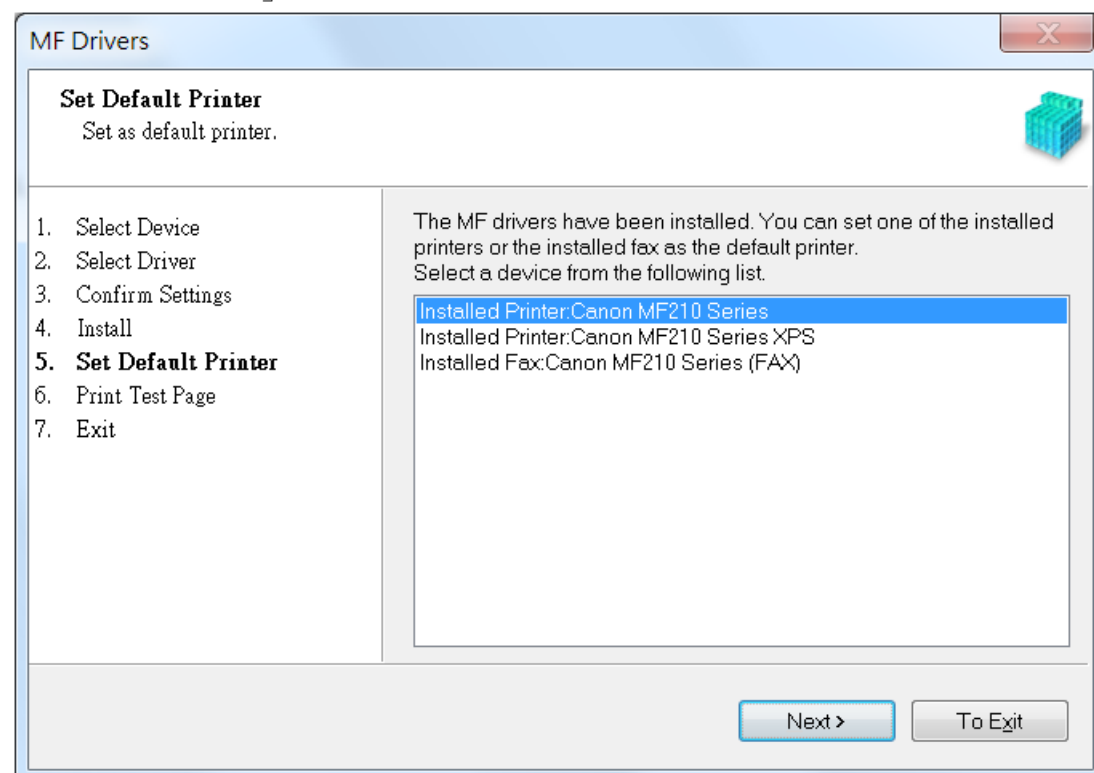
12. 按「Start」
Press 「Start」



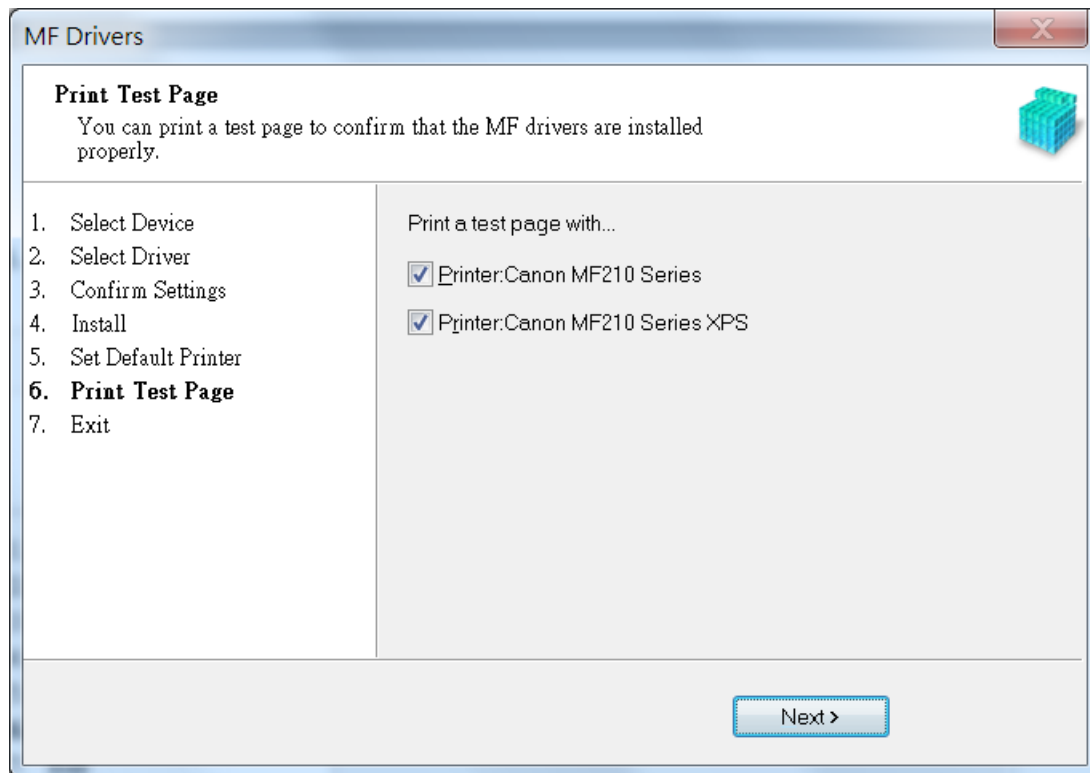
13. 安裝進行中
Installing printer driver



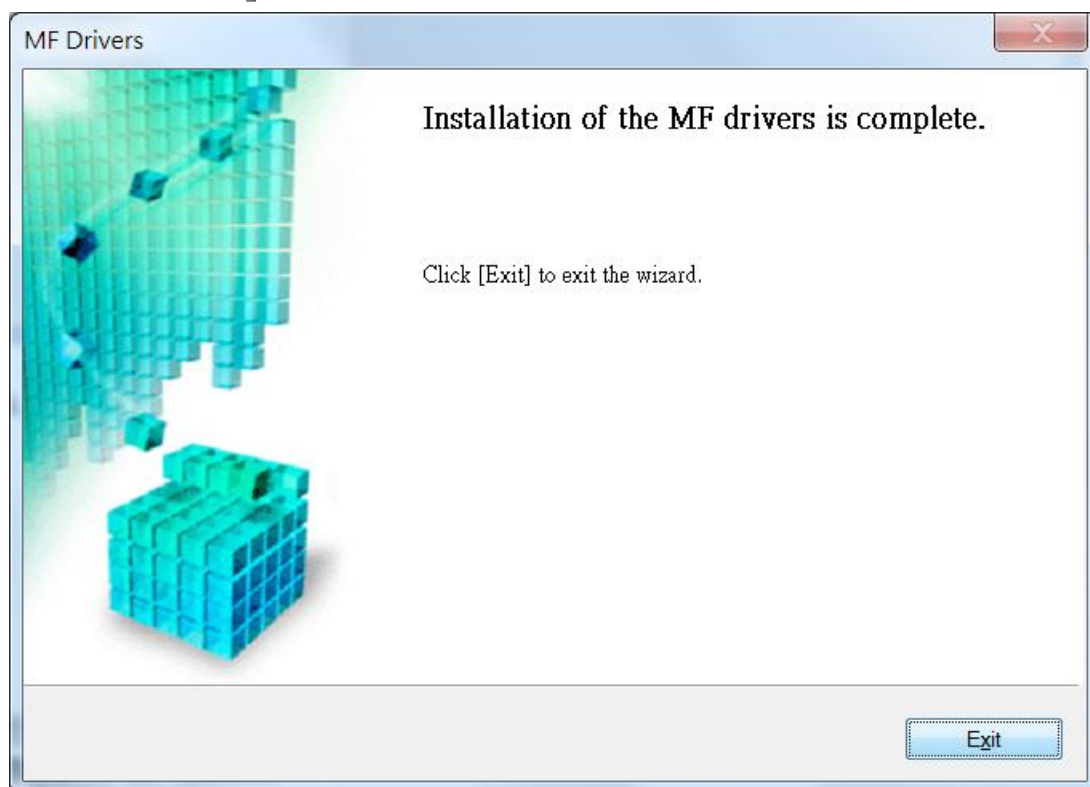
14. 按「Next」
Press 「Next」



15. 可選擇列印測試頁，按「Next」
Can print a test page, press 「Next」



16. 按「Exit」完成安裝
Press 「Exit」 to finish installation



到佳能網站 <https://hk.canon/en/support>，選擇相關的印表機型號及下載掃描軟件 MF Toolbox

Go to: <https://hk.canon/en/support> , select related printer model, then download the scanner software MF Toolbox

17. 打開安裝掃描軟件 (MF Toolbox) 安裝檔案

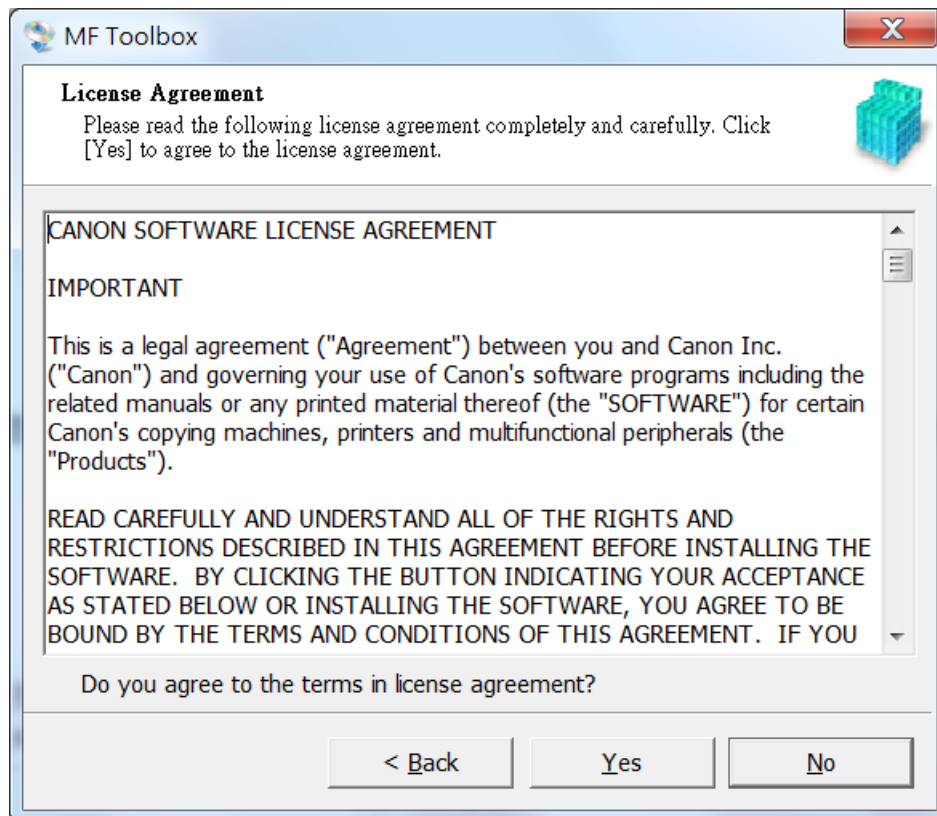
Open MF Toolbox installation file

18. 按「Next」

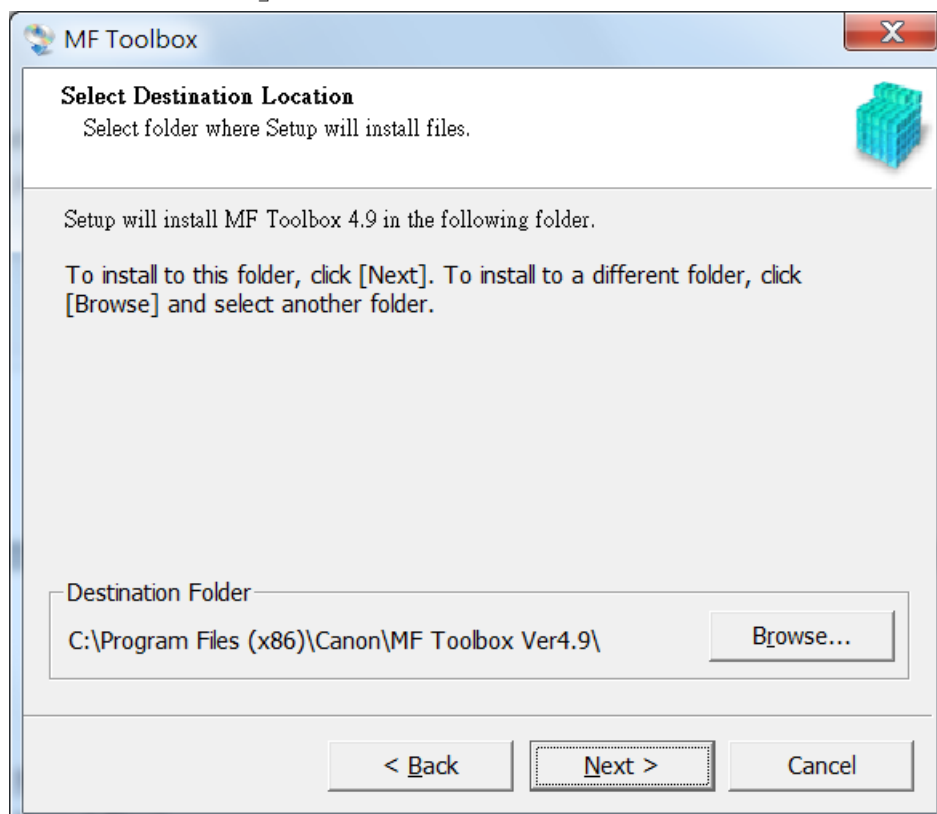
Press 「Next」



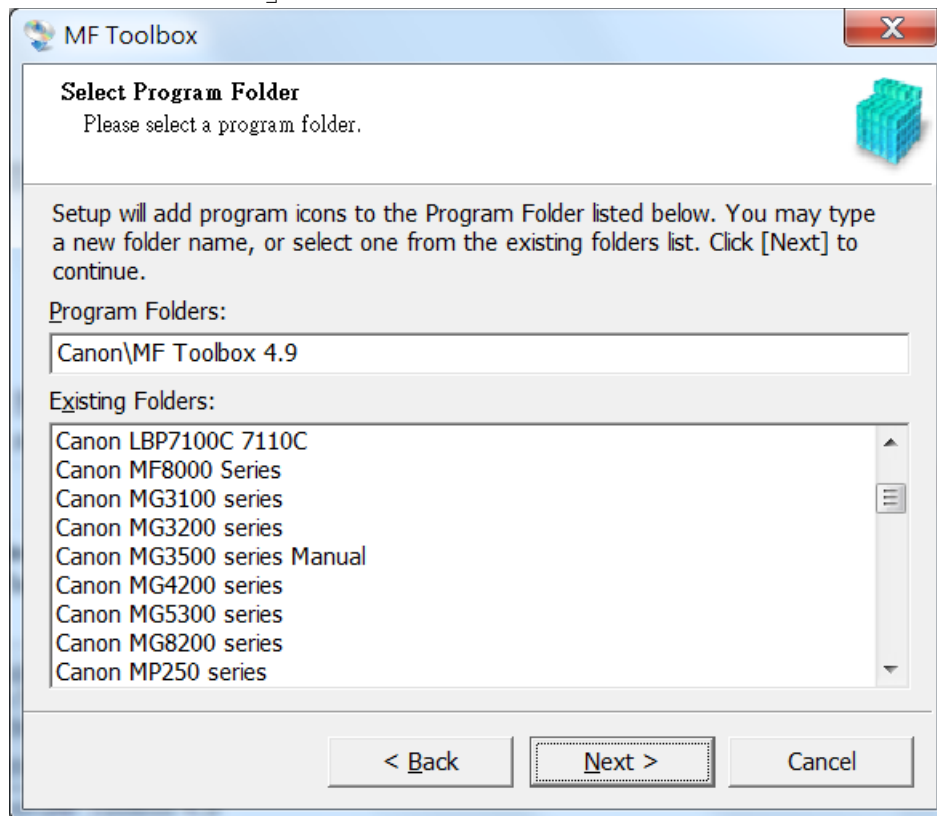
19. 按「是」
Press 「Yes」



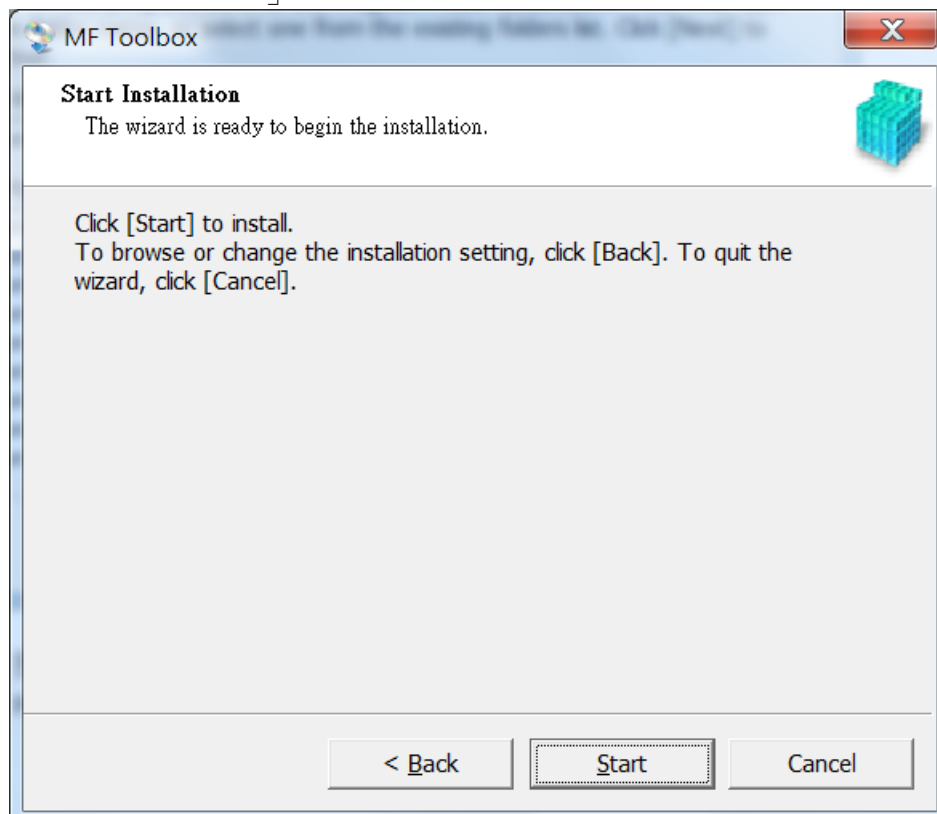
20. 按「Next」
Press 「Next」



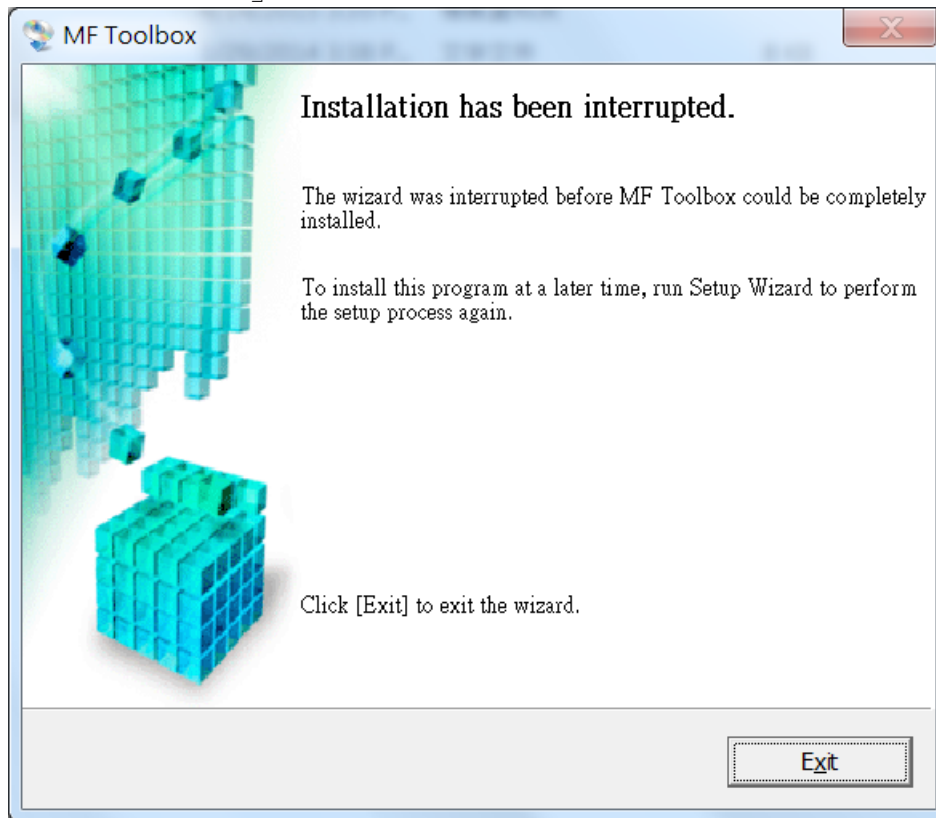
22. 按「Next」
Press 「Next」



23. 按「Start」
Press 「Start」



24. 按「Exit」完成安裝
Press 「Exit」 finish installation



-完-