

**MF226dn 安裝 MAC 透過 LAN 連線連接印表機之驅動程式步驟**  
**The Driver installation procedure for MF226dn (Via LAN)**

1. 先將打印機連接到網路，詳細可參考以下步驟

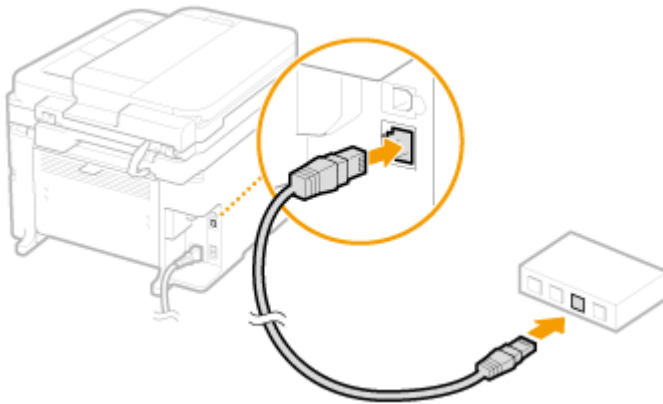
(Connecting to a Wired LAN)

2. 連接區域網路纜線 (Connect a LAN cable)

使用區域網路纜線將本機連接到路由器

推入接頭，直至聽到喀嗒聲

(Connect the machine to a router by using a LAN cable, push the connector in until it clicks into place)



3. 等待約 2 分鐘 (Wait approximately 2 minutes)

等待時，會自動設定 IP 位址 (While you wait, the IP address is set automatically)

4. 在主畫面中點選「功能表」

(Tap “Menu” in the Home Screen)

5. 點選「網路設定」

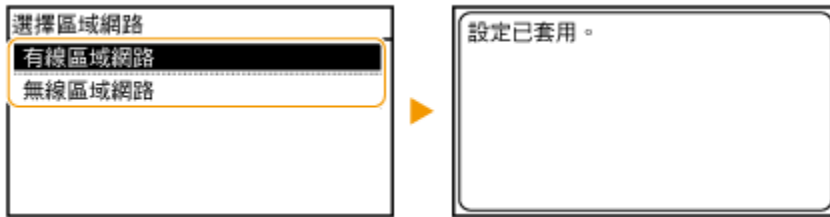
(Tap “Network Settings”)

6. 若顯示 PIN 碼輸入畫面，請使用數字鍵輸入 PIN 碼，然後點選「套用」

(If a screen for entering a PIN is displayed, enter the PIN with the numeric keys and tap “Apply”)

7. 點選「有線區域網路」

(Tap “Select Wired/Wireless LAN” and tap Wired LAN)



#### 下載及安裝步驟

(Download and Driver Installation Procedure)

8. 到佳能網站 <https://hk.canon/en/support>，選擇相關的印表機型號及下載印表機的驅動程式

(Go to: <https://hk.canon/en/support>, select related printer model, then download the printer driver)

9. 按「MF\_Printer\_Installer.pkg」(Open “MF\_Printer\_Installer.pkg”)



10. 按「繼續」(Choose “Next”)



11. 按「繼續」及「同意」(Choose “Next” and then choose “Agree”)



12. 按「安裝」(Choose “Install”)



13. 等待軟件安裝 (Waiting for the installation progress)



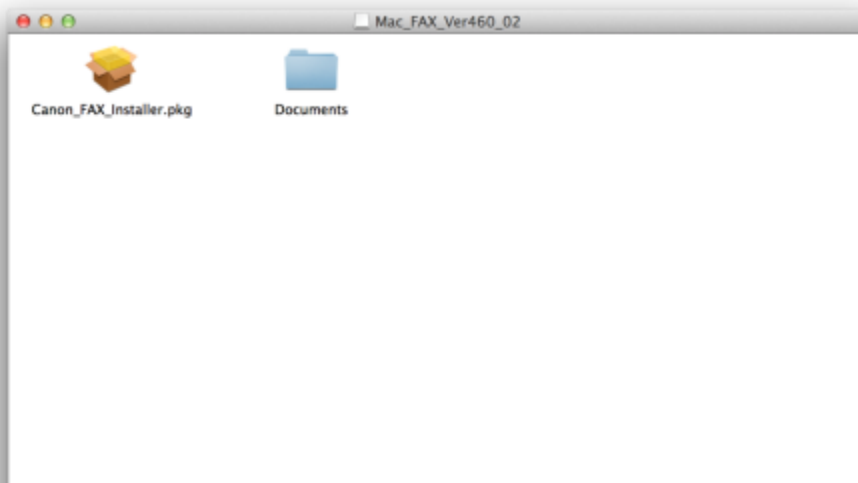
14. 按「關閉」以完成打印驅動程式安裝(Choose “Close”)



15. 到佳能網站 <https://hk.canon/en/support> , 選擇相關的印表機型號及下載傳真的驅動程式

(Go to: <https://hk.canon/en/support>, select related printer model, then download the fax driver)

16. 按「Canon\_FAX\_Installer.pkg」(Open “Canon\_FAX\_Installer.pkg”)



17. 按「繼續」(Choose “Continue”)



18. 按「繼續」及「同意」(Choose “Continue “and then choose” Agree”)



19. 按「安裝」(Choose Install)



20. 等待軟件安裝 (Waiting for the installation progress)



21. 按「關閉」以完成傳真驅動程式安裝 (Choose “Close”)

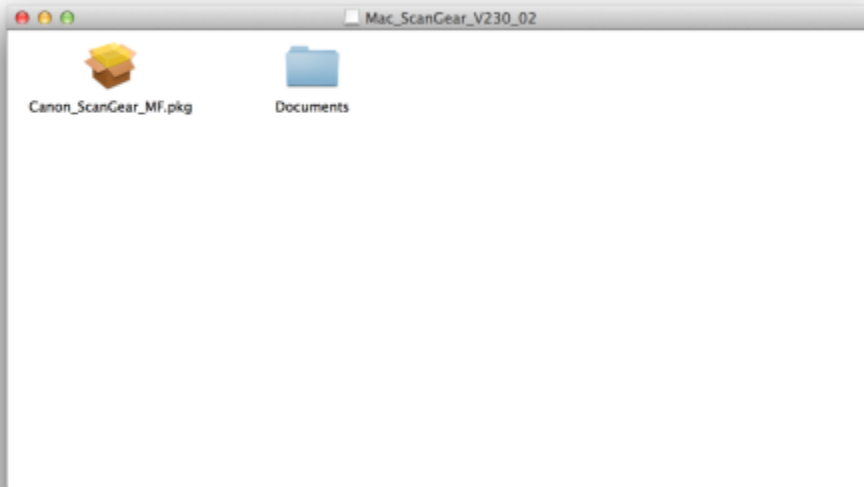


22. 到佳能網站 <https://hk.canon/en/support>，選擇相關的印表機型號及下載掃瞄器的驅動程式

(Go to: <https://hk.canon/en/support>, select related printer model, then download the scanner driver)



23. 按「Canon\_ScanGear\_MF.pkg」(Open “Canon\_ScanGear\_MF.pkg”)



24. 按「繼續」(Choose “Continue”)



25. 按「繼續」及「同意」(Choose “Continue” and then choose “Agree”)



26. 按「安裝」(Choose “Install”)



27. 等待軟件安裝 (Waiting for the installation progress)



28. 按「關閉」以完成掃描驅動程式及軟件安裝  
(Choose "Close")



29. 完成安裝驅動程式後需新增印表機，到「系統偏好設定」，選「印表機與掃描器」  
(Go to “System Preferences” and choose “Print and Scan”)

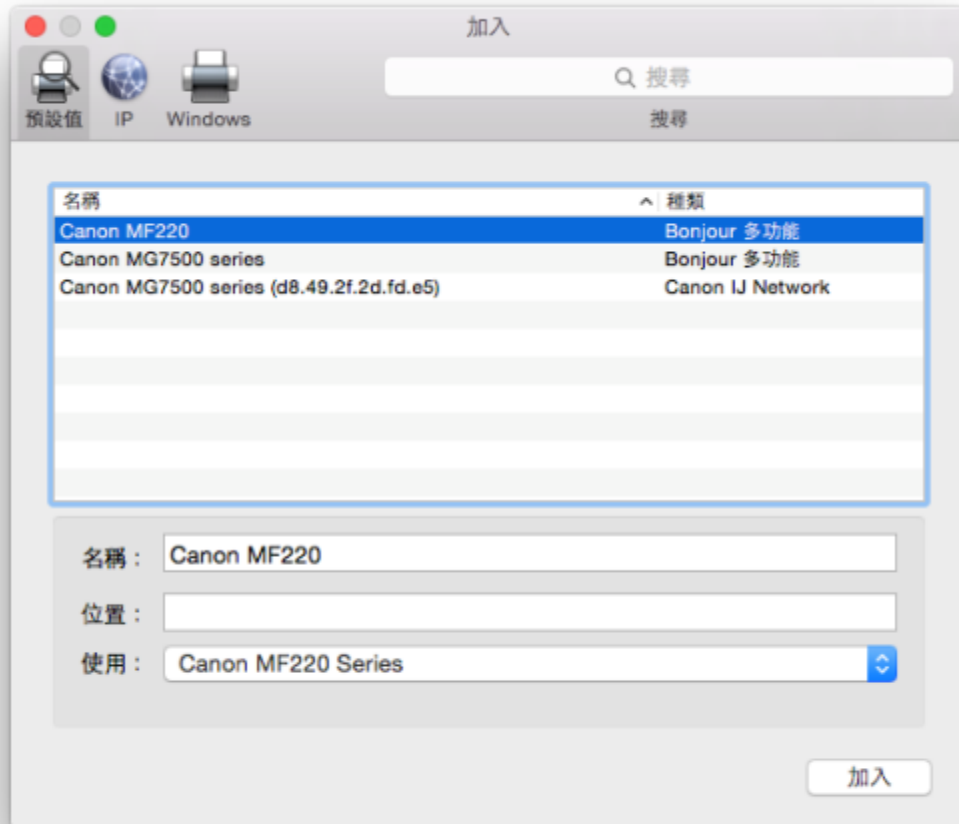


30. 選取左下角「+」按鈕，選「加入印表機或掃描器」  
(Click the “+” button and choose “Add printer or Scanner”)



31. 名稱選擇「Canon MF220」，使用選擇「Canon MF220」按「加入」，新增印表機驅動程式

(Choose the Name with Canon MF 220 Series on the “Use “and Click “add”)



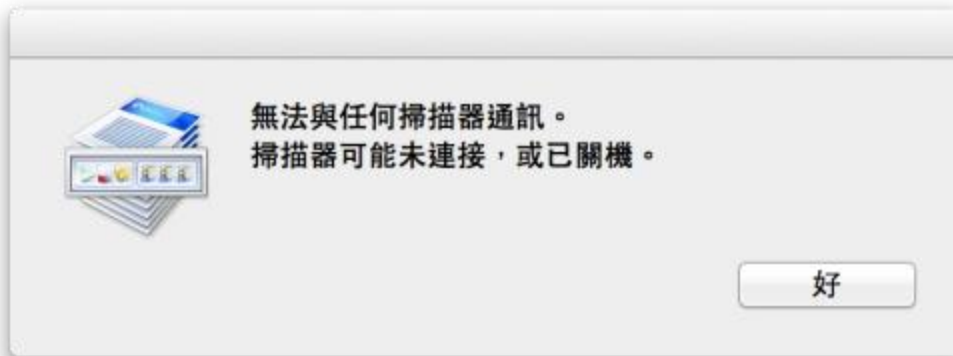
32. 再一次按左下角「+」按鈕，選「加入印表機或掃描器」，名稱選擇「Canon MF 220」，使用選擇「Canon MF220 Series FAX」按「加入」，新增傳真驅動程式

(Click the “+” button and select “add printer or scanner”, choose the Name with Canon MF 220 Series Fax on the “Use “and Click “add”)



33. 網絡掃描需新增掃描器到 MF Toolbox，到電腦「應用程式」>「Canon MF Utilities」開啟 MF Toolbox，第一次開啟會出現以下警告

(Need to add the network scanner to the MF toolbox, go to “Application “-> “Canon MF Utilities” to run the MF toolbox, and it will have a warning message at the first time)



34. 按左上角「MF Toolbox」，選「網路掃描器設定」

(Click the “MF Toolbox” on the top left corner, and choose “Network Scanner Setting”)



35. 按左下角「+」號新增掃描器  
(Click the “+” button)



36. 選擇「Canon MF220」，按「新增」  
(Choose “Canon MF220” and then click “add”)





37. 完成以上設定後已可使用 MF226dn 作打印及掃描功能

(Setting finished and the print and scan functions are ready to use)

-完-

-End-