

MF229dw 安裝 Win 8.1 透過無線 LAN 連線連接印表機之驅動程式步驟

先將打印機連接到路由器，詳細可參考以下步驟：

1. 在主畫面中點選「功能表」
2. 點選「網路設定」
 - 若顯示 PIN 碼輸入畫面，使用數字鍵輸入 PIN 碼，然後點選「套用」
3. 點選「無線區域網路」
 - 若顯示 <是否啟用無線區域網路？> 訊息，點選 <是>。



4. 讀取顯示的訊息，然後點選 <完成>。
5. 點選 <SSID 設定>。

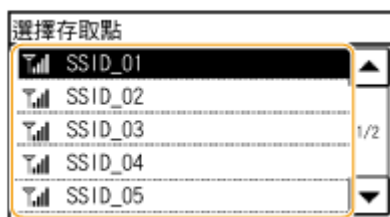


6. 點選 <選擇存取點>。



7. 選擇無線區域網路路由器。

選擇與您記下的 SSID 相符的路由器。

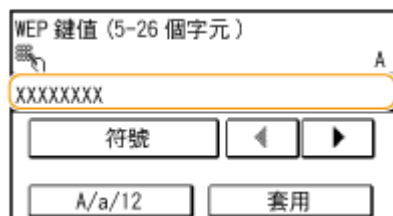


8. 輸入您記下的網路鍵值。

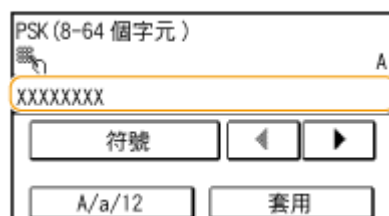
使用數字鍵輸入網路金鑰(路由器密碼)，然後點選 <套用>。

輸入文字

WEP



WPA-PSK 或 WPA2-PSK

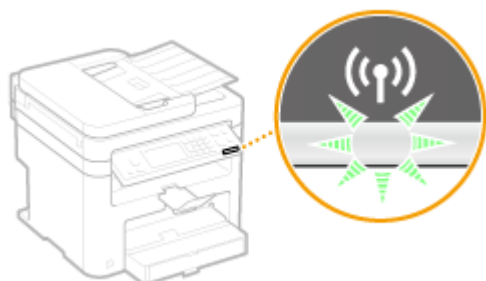


9. 點選 <是>。



10. 確認控制面板上的 Wi-Fi 指示燈閃爍。

偵測到無線路由器時，Wi-Fi 指示燈閃爍。



11. 設定完成時，會顯示以下畫面，約 2 秒後 Wi-Fi 指示燈隨即亮起。



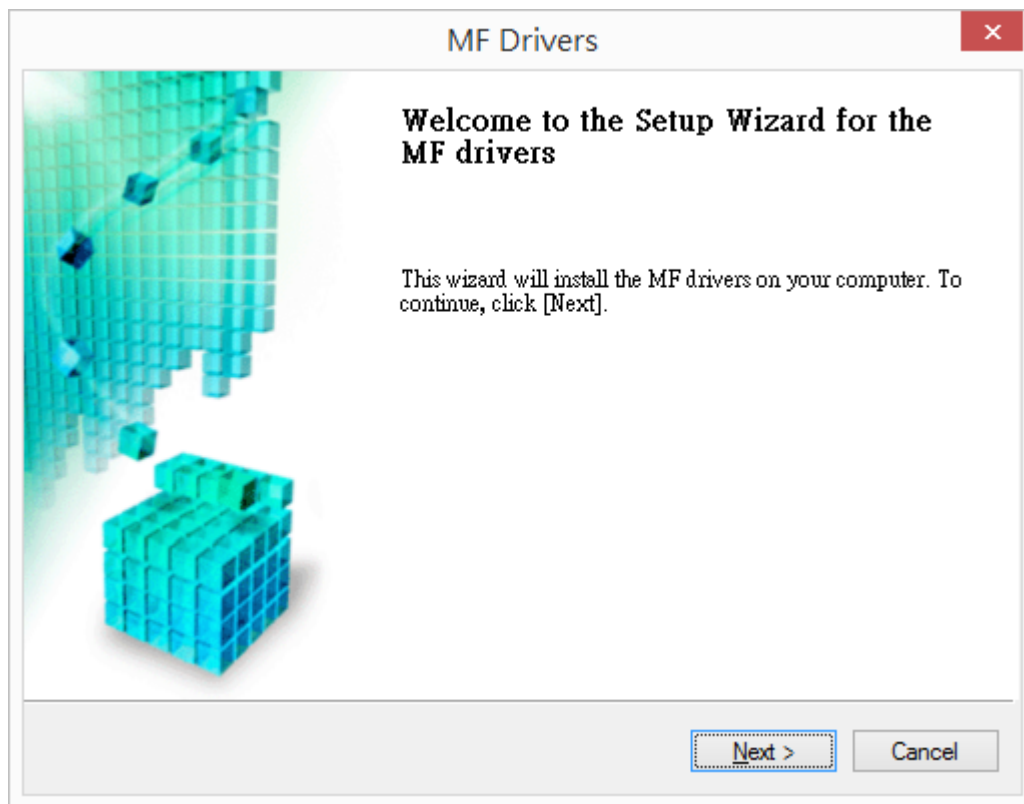
等待約 2 分鐘，直到本機的 IP 位址設定完成。

到佳能網站 <https://hk.canon/en/support>，選擇相關的印表機型號及下載印表機的驅動程式

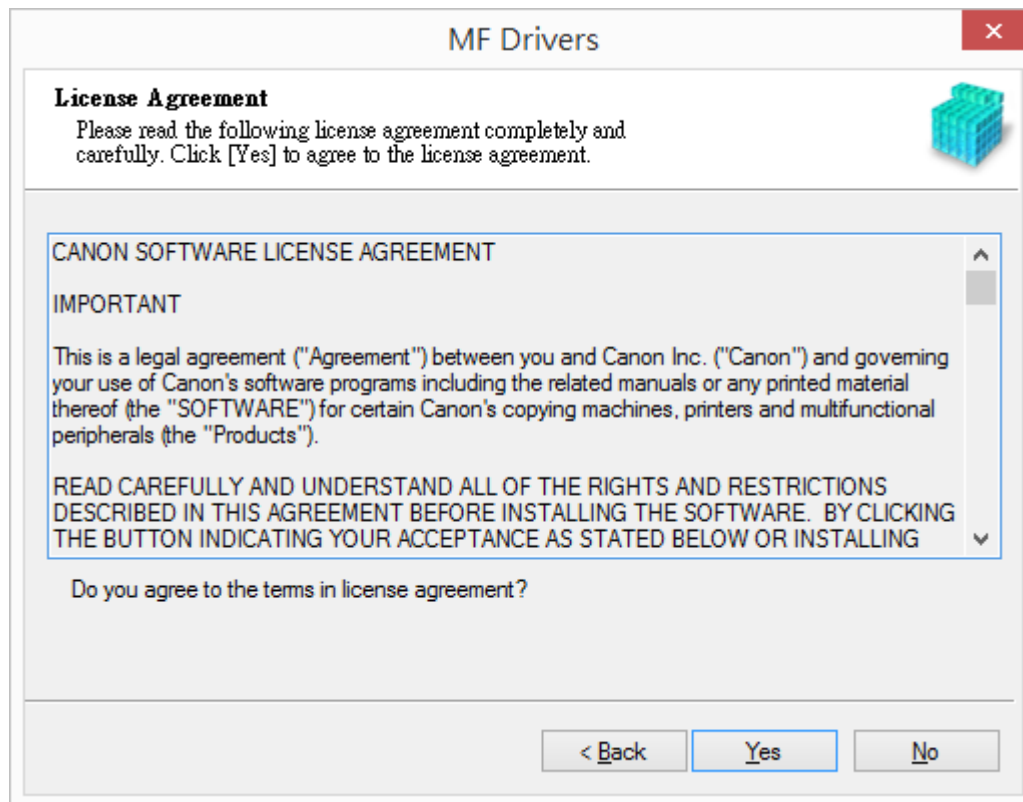
Go to: <https://hk.canon/en/support>, select related printer model, then download the printer driver

安裝步驟

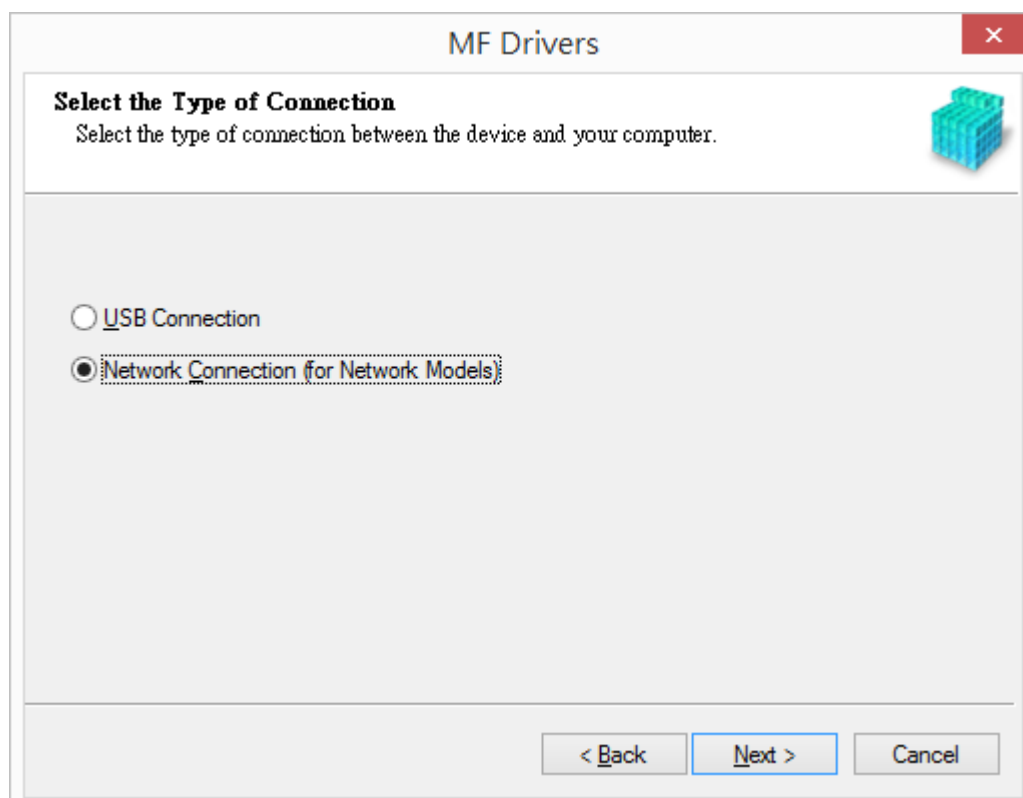
1. 打開安裝驅動程式 (MF Drivers) 安裝檔案
Open MF Driver Installation File
2. 按「Next」
Press 「Next」



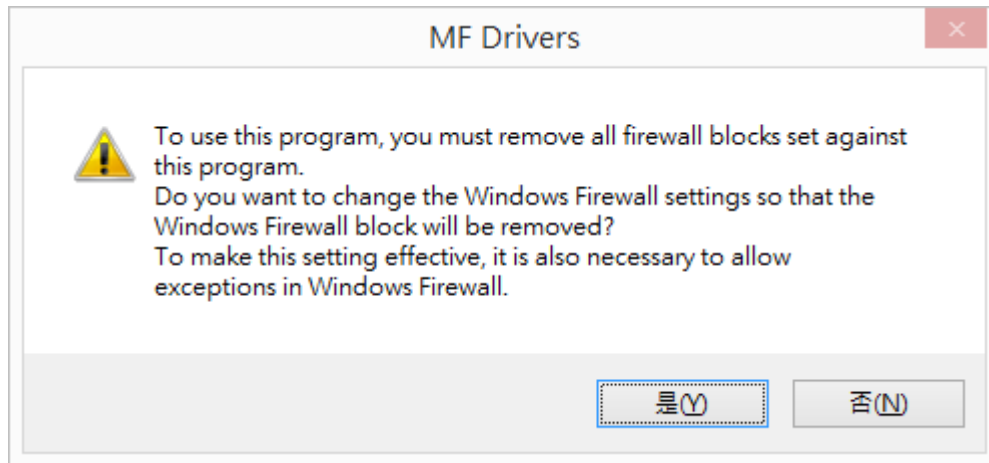
3. 按「Yes」
Press 「Yes」



4. 選擇「Network Connection (for Network Models)」，按「Next」
Choose 「Network Connection (for Network Models)」, press 「Next」



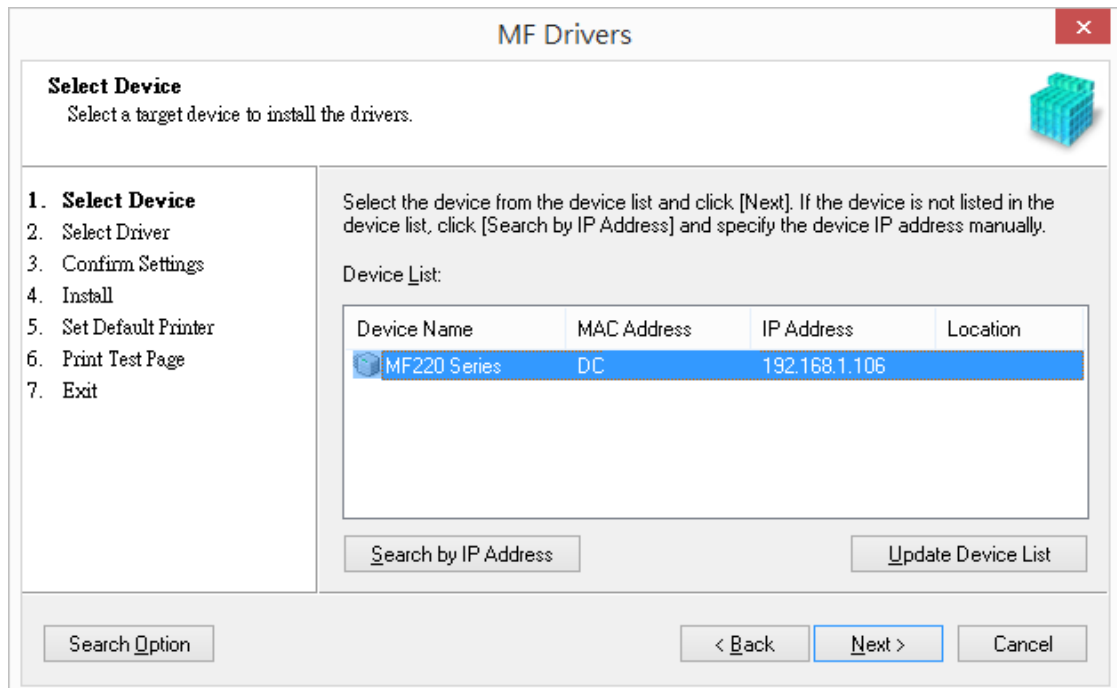
5. 確定已移除所有防火牆對此程式的封鎖設定，按「是」
Make sure already remove all firewall blocks set against this program



6. 搜尋裝置中
Searching for device...



7. 確定在列表中選取印表機後按「Next」
Select the device from the device list, press 「Next」



8. 建議選取所有驅動程式 (預設) , 按 「 Next 」
Suggest choose all driver to install (Default), press 「 Next 」

MF Drivers

Select Driver
Select the drivers to install.

1. Select Device
- 2. Select Driver**
3. Confirm Settings
4. Install
5. Set Default Printer
6. Print Test Page
7. Exit

Target Device
Canon MF220 Series

Driver to Install:

- Printer
- Fax (for Supported Models)
- Scanner
- Canon Driver Information Assist Service
When you install this service and use shared or local printers, functions that allow you to obtain device information will be added to your computer.

< Back Next > Cancel

9. 建議選取所有驅動程式 (預設) , 按 「 Next 」
Suggest choose all driver to install (Default), press 「 Next 」

MF Drivers

Select Driver
Select the drivers to install.

1. Select Device
- 2. Select Driver**
3. Confirm Settings
4. Install
5. Set Default Printer
6. Print Test Page
7. Exit

Target Device
Canon MF220 Series

Printer Drivers to Install:


- UFR II LT Printer Driver
- UFR II LT XPS Printer Driver

< Back Next > Cancel

10. 按「Next」
Press 「Next」

MF Drivers ✕

Confirm Settings
Confirm the following setting details.




<ol style="list-style-type: none">1. Select Device2. Select Driver3. Confirm Settings4. Install5. Set Default Printer6. Print Test Page7. Exit	<p>You can change the printer name. If you specify this printer as a shared printer, you can specify the shared printer name and set an additional driver (alternate driver). Confirm the settings, and then click [Next].</p> <p>Printer</p> <p>Port: CNMFNP_DC Driver: Canon MF220 Series</p> <p>Printer Name: <input type="text" value="Canon MF220 Series"/></p> <p><input type="checkbox"/> Use as Shared Printer</p> <p>Shared Name: <input type="text"/></p> <p style="text-align: right;">Current Device: 1 Number of Devices to Set: 3</p>
---	--

< Back Next > Cancel

11. 按「Next」
Press 「Next」

MF Drivers ✕

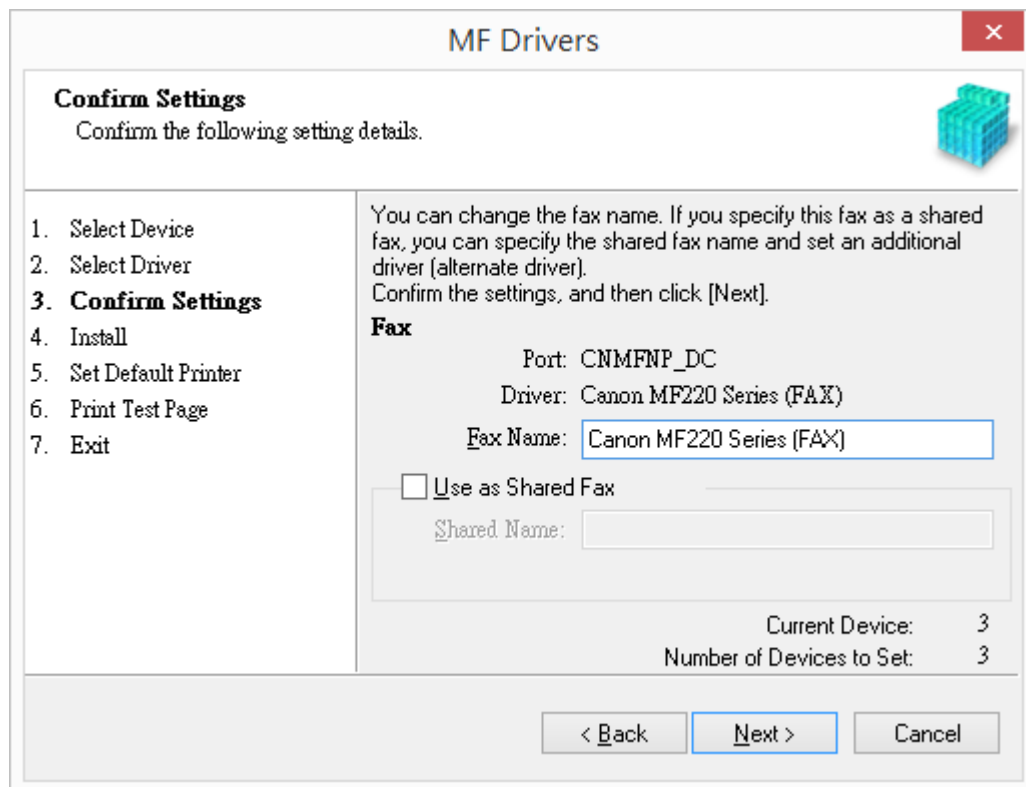
Confirm Settings
Confirm the following setting details.



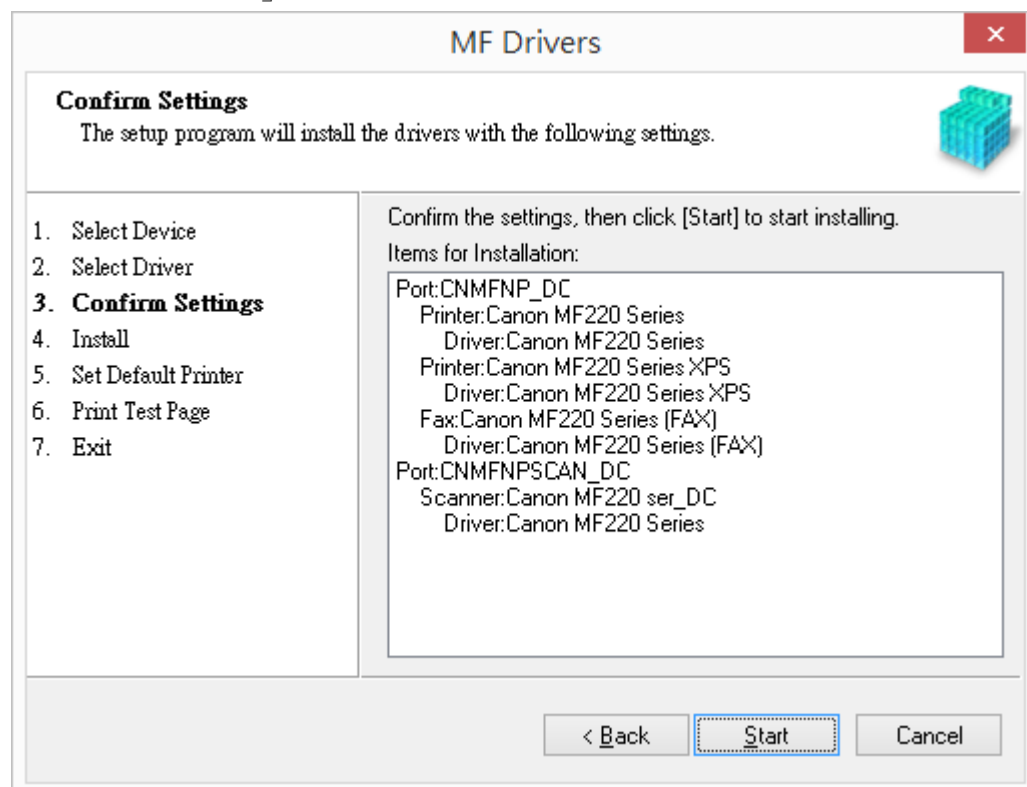
<ol style="list-style-type: none">1. Select Device2. Select Driver3. Confirm Settings4. Install5. Set Default Printer6. Print Test Page7. Exit	<p>You can change the printer name. If you specify this printer as a shared printer, you can specify the shared printer name and set an additional driver (alternate driver). Confirm the settings, and then click [Next].</p> <p>Printer</p> <p>Port: CNMFNP_DC Driver: Canon MF220 Series XPS</p> <p>Printer Name: <input type="text" value="Canon MF220 Series XPS"/></p> <p><input type="checkbox"/> Use as Shared Printer</p> <p>Shared Name: <input type="text"/></p> <p style="text-align: right;">Current Device: 2 Number of Devices to Set: 3</p>
---	--

< Back Next > Cancel

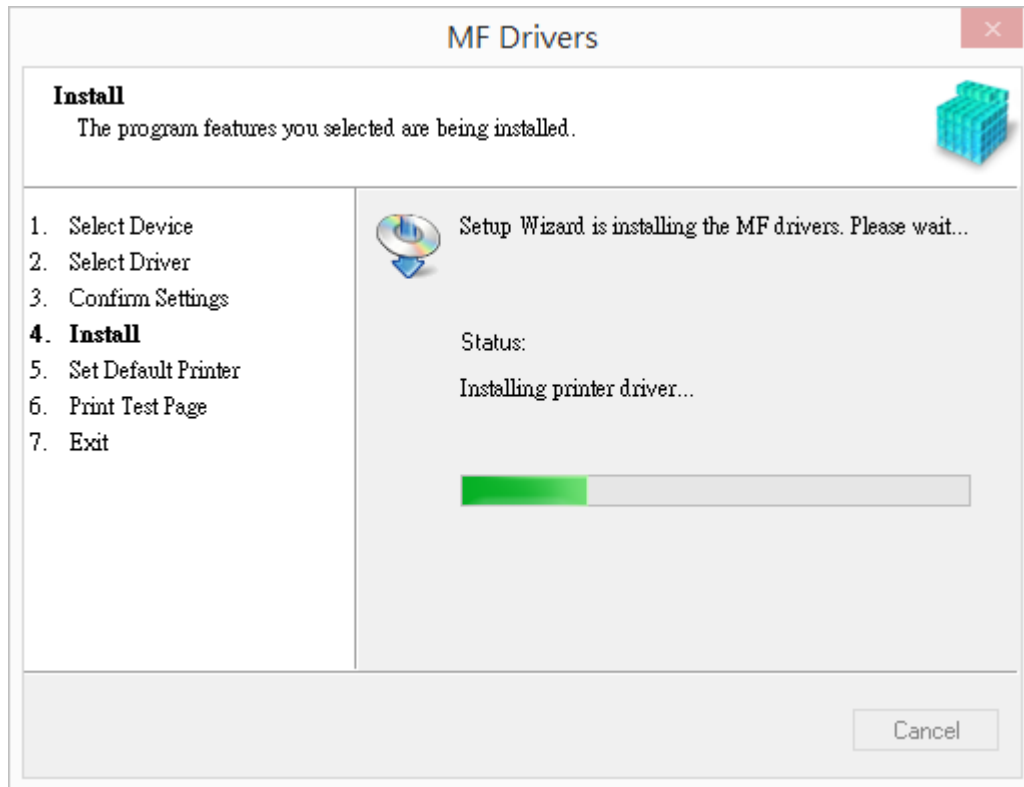
12. 按「Next」
Press 「Next」



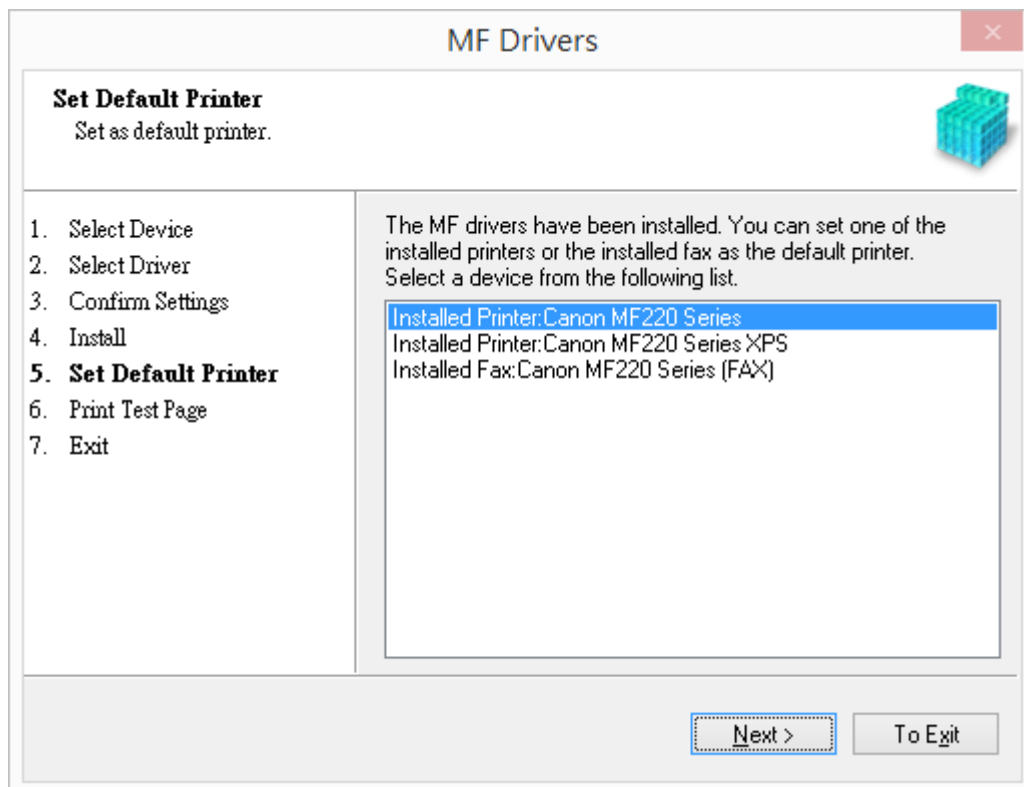
13. 按「Start」
Press 「Start」



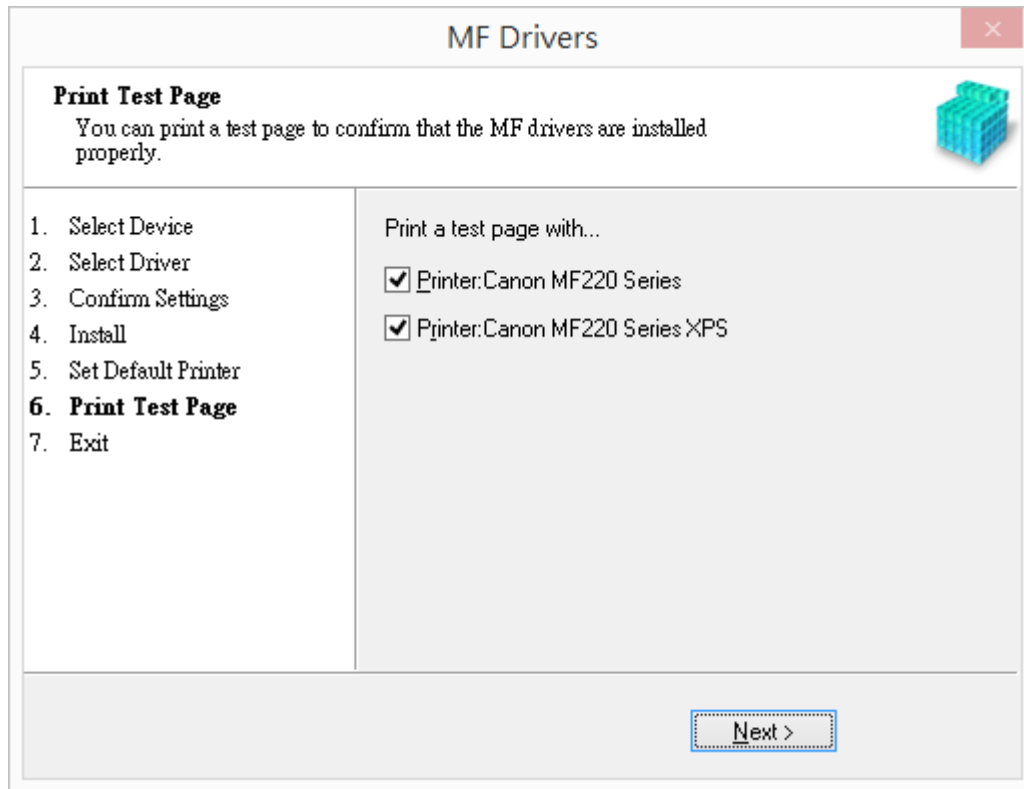
14. 安裝進行中
Installing printer driver



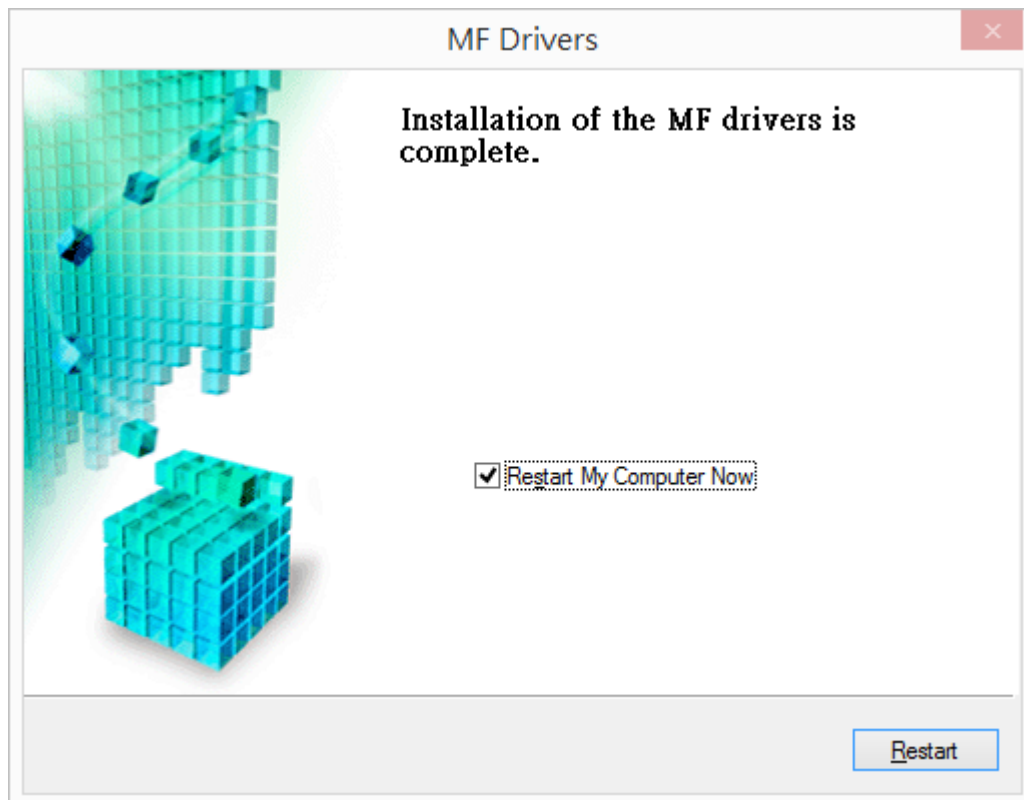
15. 選擇已安裝的印表機成預設印表機後按「Next」
Set one of the installed printer or fax as the default printer, press 「Next」



16. 可選擇列印測試頁，按「Next」
Can print a test page, press 「Next」



17. 按「Restart」後會自動重啟電腦，完成安裝
Press 「Restart」 then computer will restart and finish installation



到佳能網站 <https://hk.canon/en/support>，選擇相關的印表機型號及下載掃描軟件 MF Toolbox

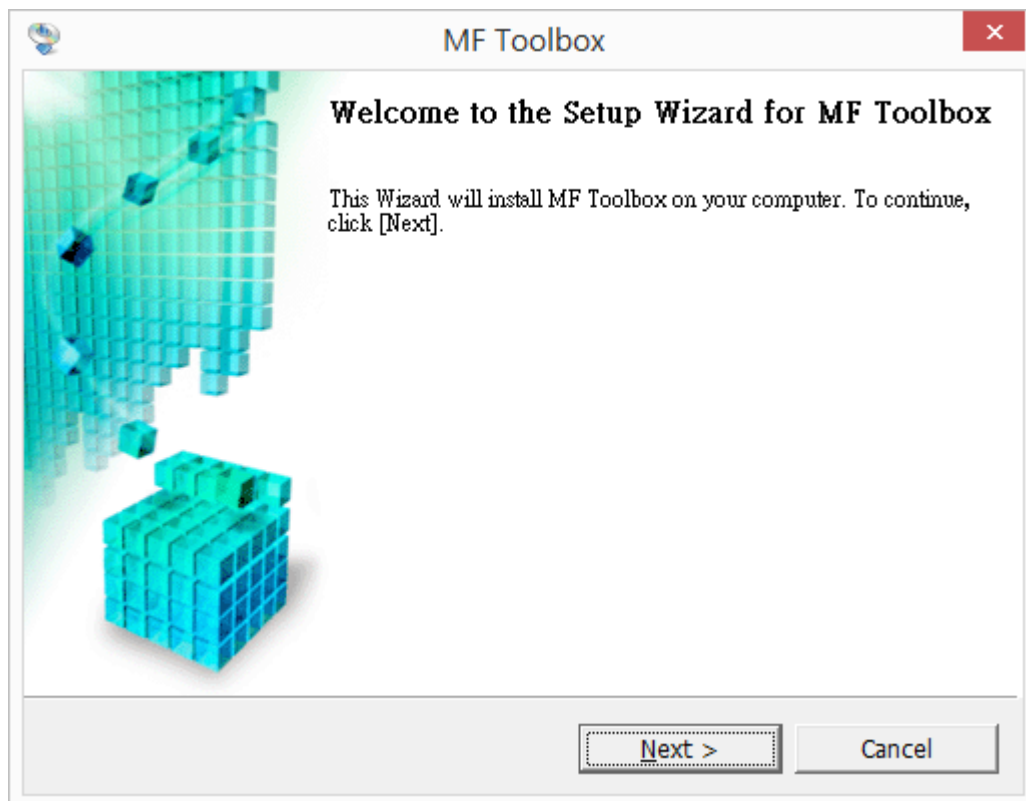
Go to: <https://hk.canon/en/support>, select related printer model, then download the scanner software MF Toolbox

18. 打開安裝掃描軟件 (MF Toolbox) 安裝檔案

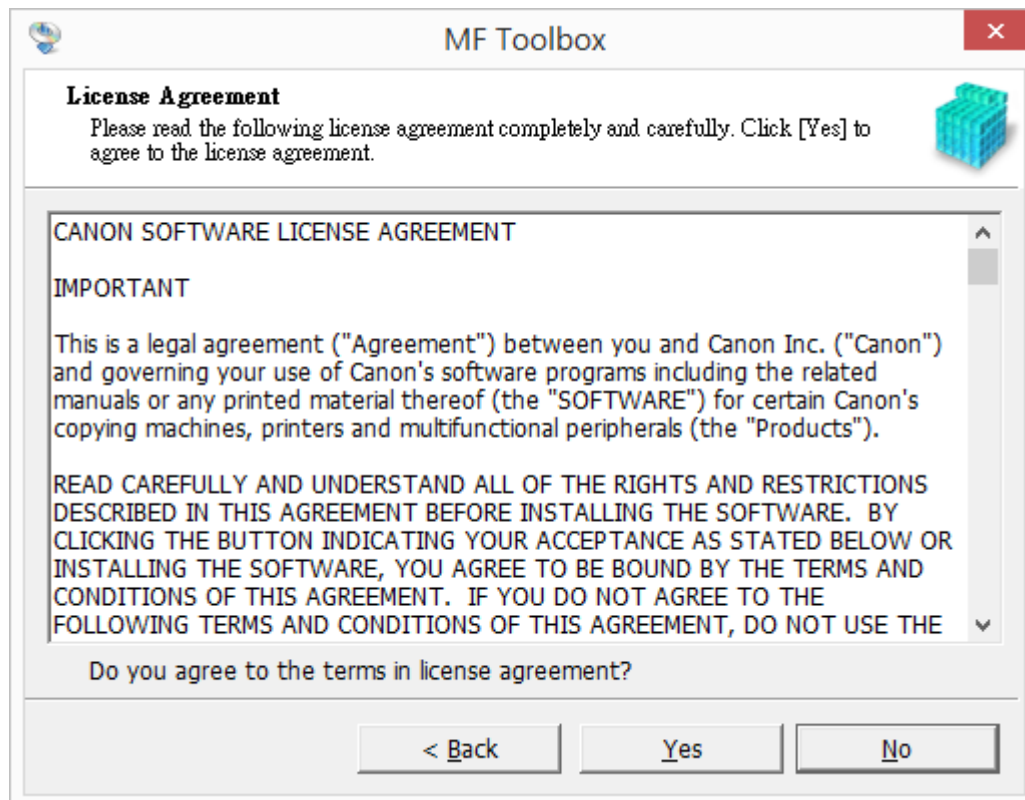
Open MF Toolbox installation file

19. 按「Next」

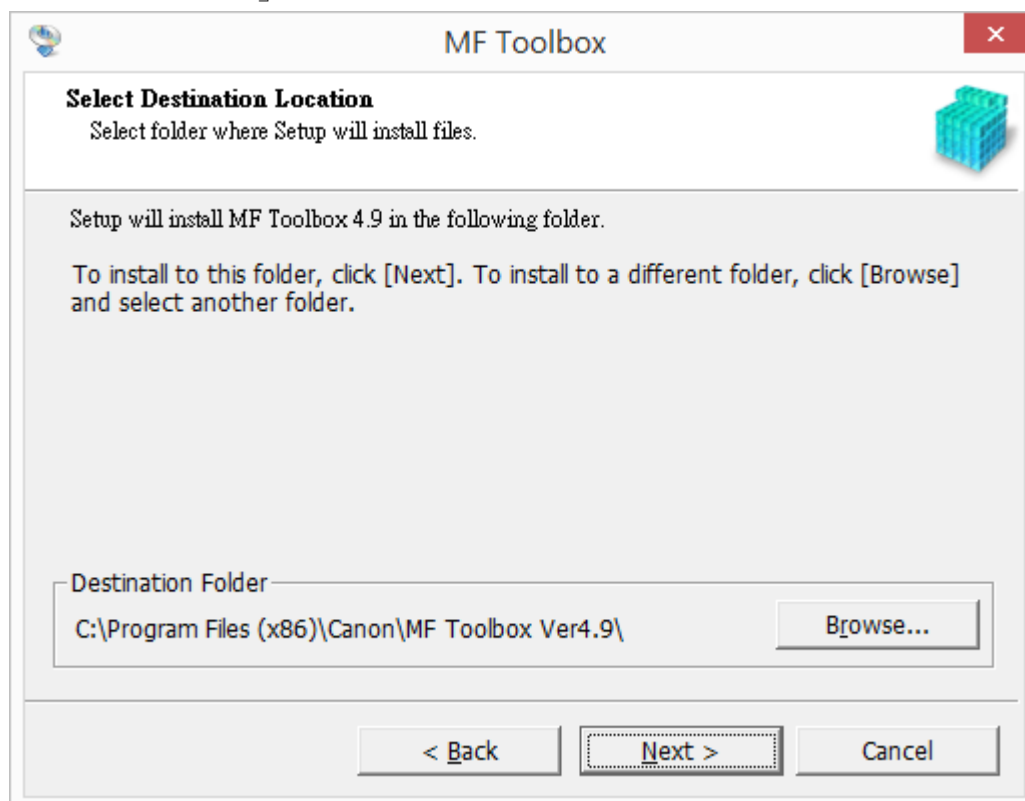
Press 「Next」



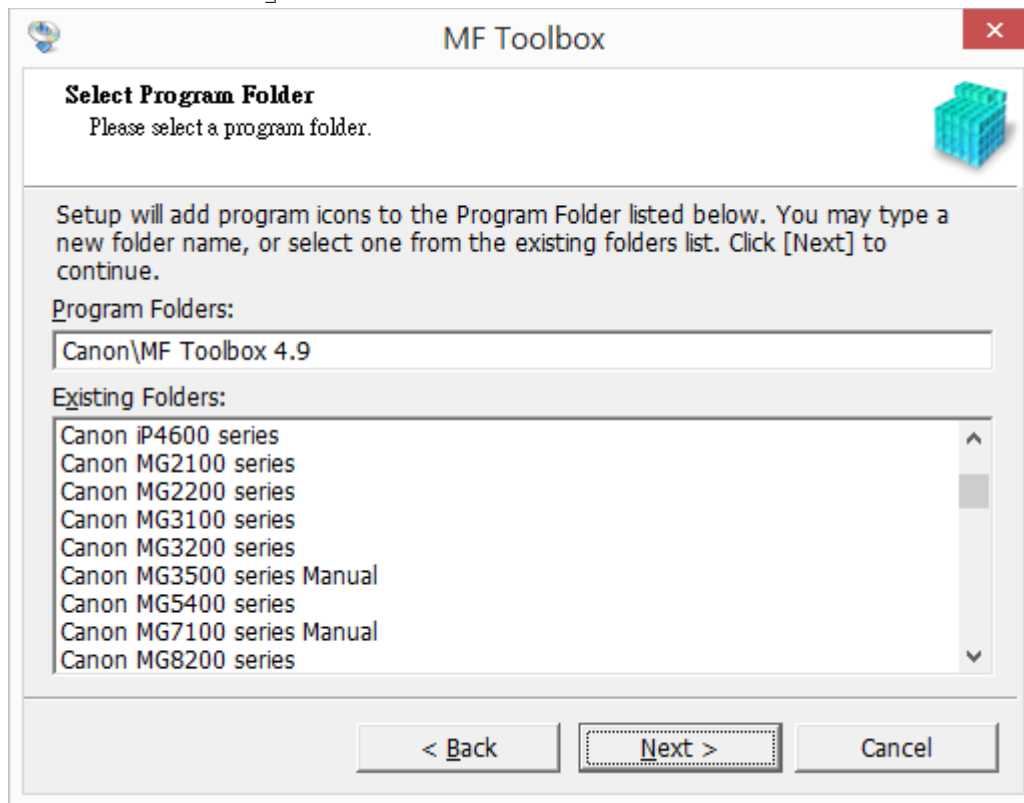
20. 按「是」
Press 「Yes」



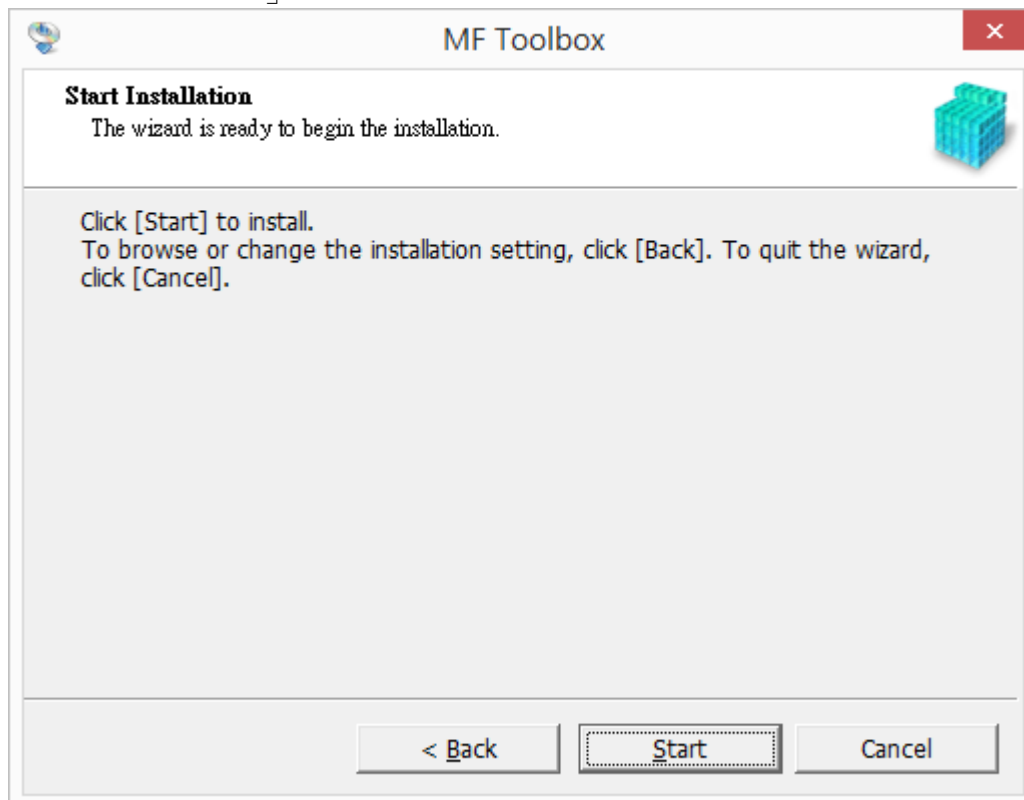
21. 按「Next」
Press 「Next」



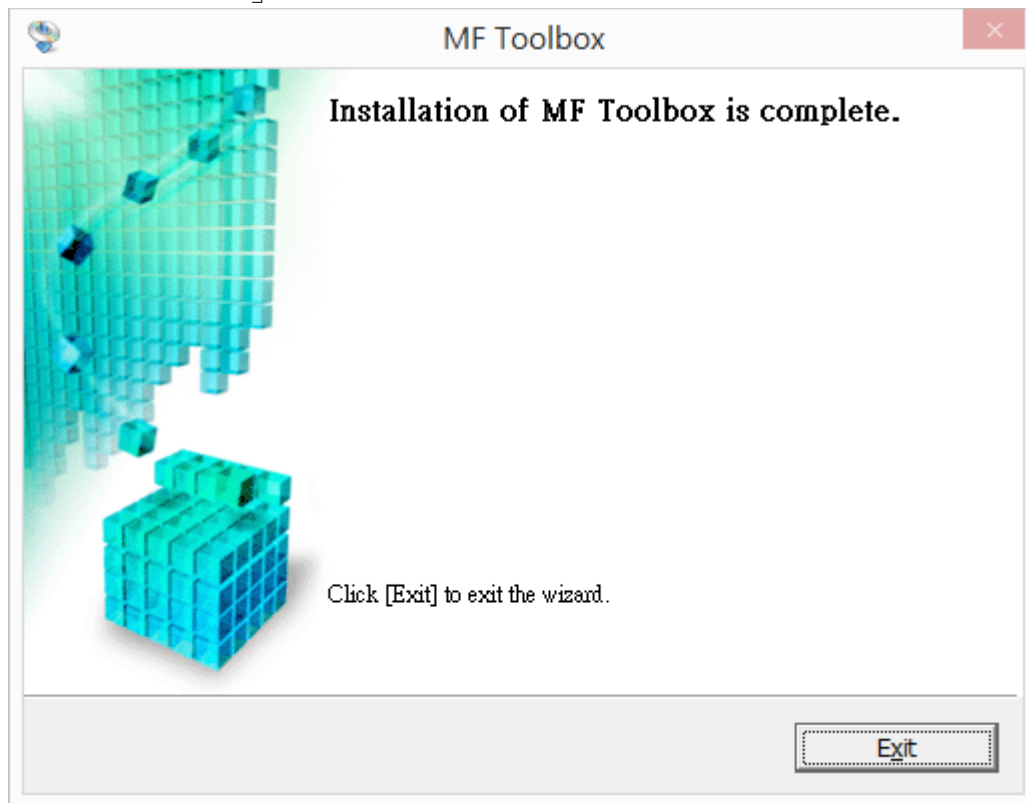
22. 按「Next」
Press 「Next」



23. 按「Start」
Press 「Start」



24. 按「Exit」完成安裝
Press 「Exit」 finish installation



-完-