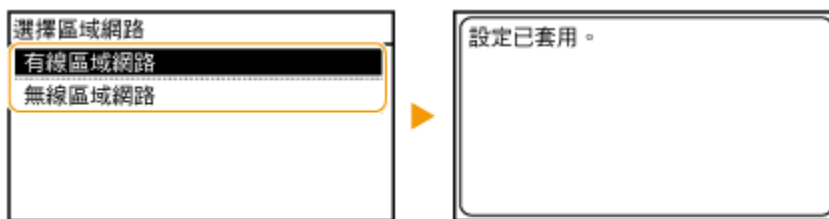


MF229dw Win 8.1 透過有線 LAN 連線連接印表機安裝驅動程式步驟

1. 在主畫面中點選 <功能表>。
Tap <Menu> in the Home Screen.
2. 點選 <網路設定>。
Tap <Network Settings>.
3. 點選 <選擇有線/無線區域網路>。
Tap <Select Wired/Wireless LAN>.
4. 點選 <有線區域網路>。
Tap <Wired LAN>.

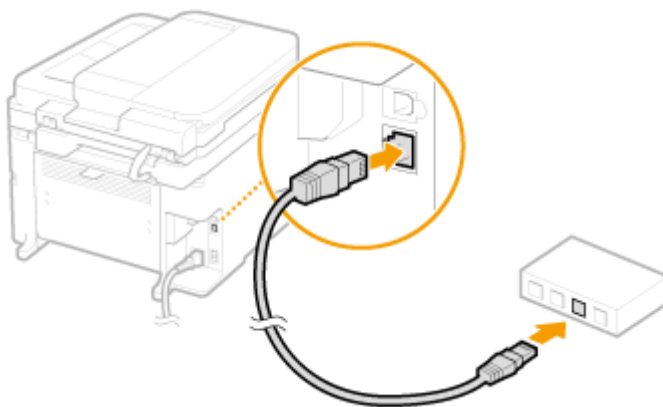


使用區域網路纜線將本機連接到路由器

Connect the machine to a router by using a LAN cable.

推入接頭，直至聽到喀嗒聲

Push the connector in until it clicks into place.



等待約 2 分鐘

Wait approximately 2 minutes

等待時，會自動設定 IP 位址

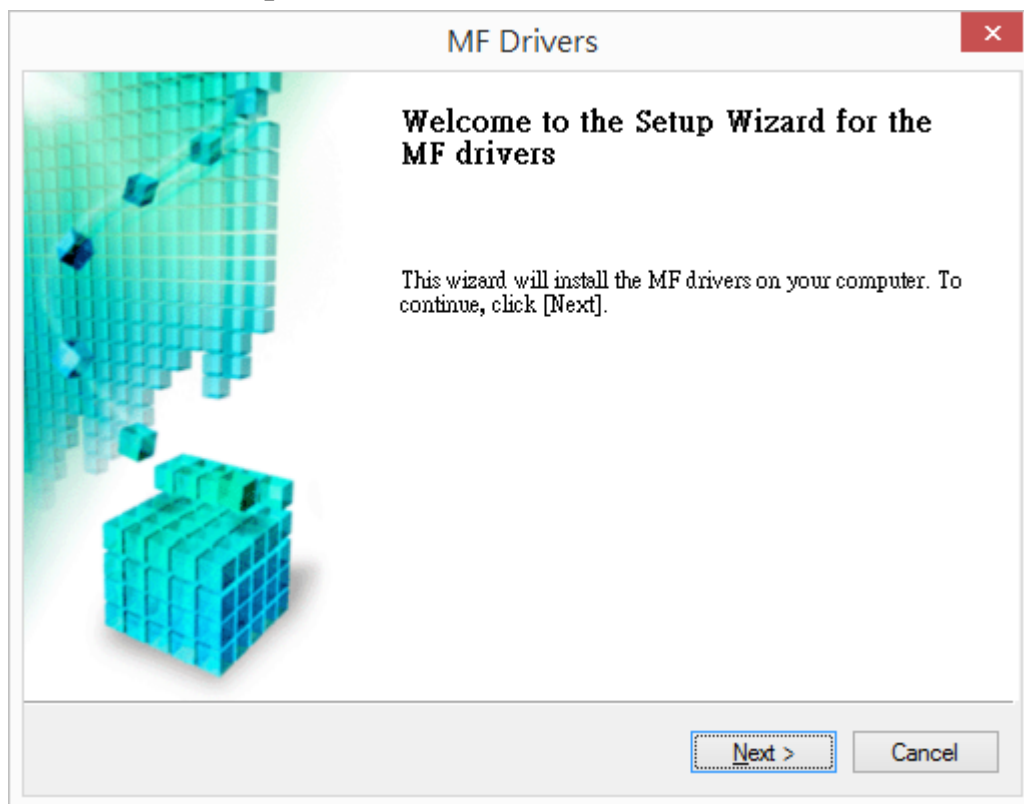
While you wait, the IP address is set automatically.

到佳能網站 <https://hk.canon/en/support>，選擇相關的印表機型號及下載印表機的驅動程式

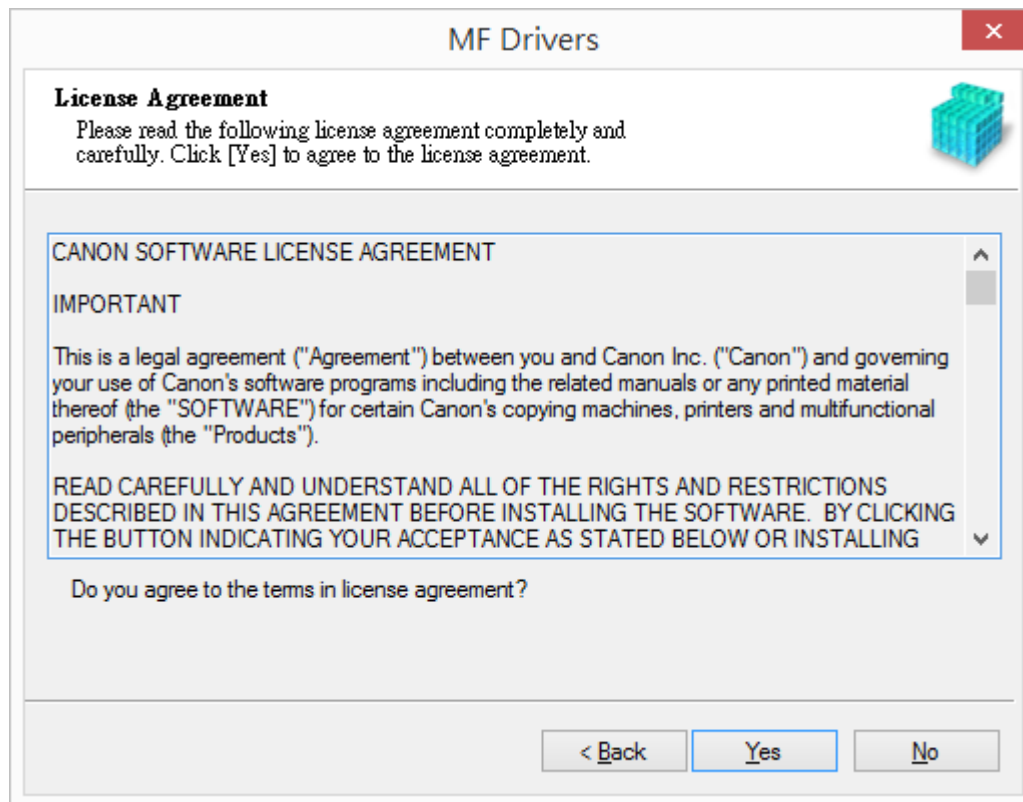
Go to: <https://hk.canon/en/support>, select related printer model, then download the printer driver

安裝步驟

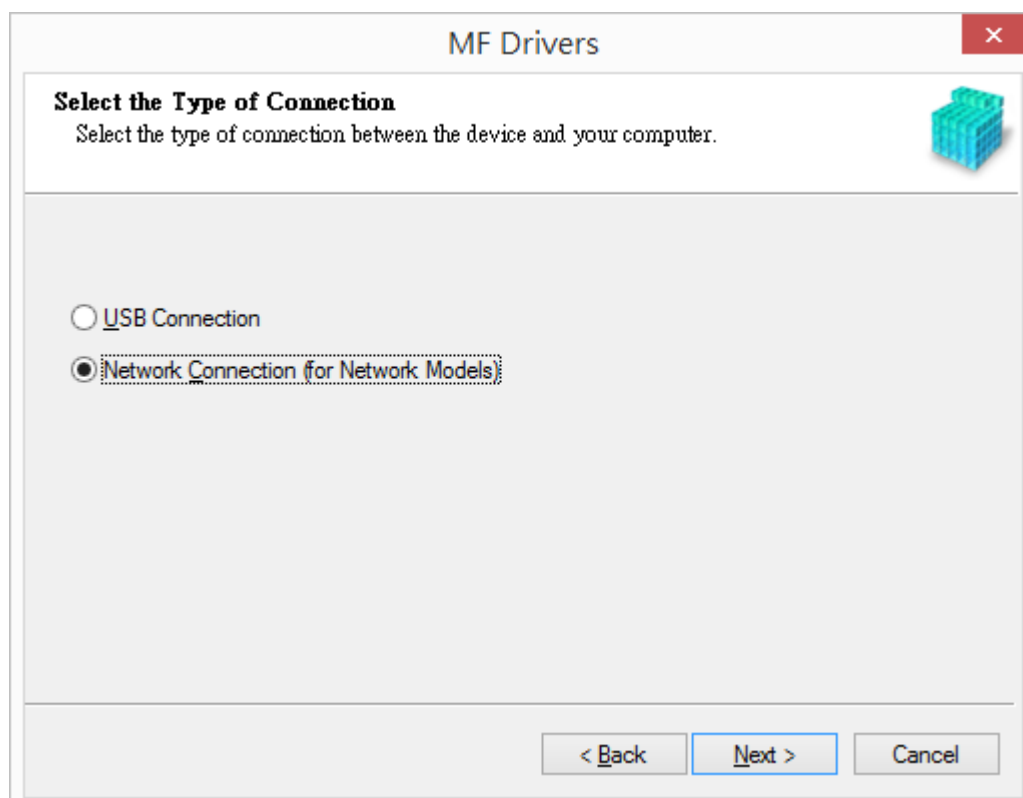
1. 打開安裝驅動程式 (MF Drivers) 安裝檔案
Open MF Driver Installation File
2. 按「Next」
Press 「Next」



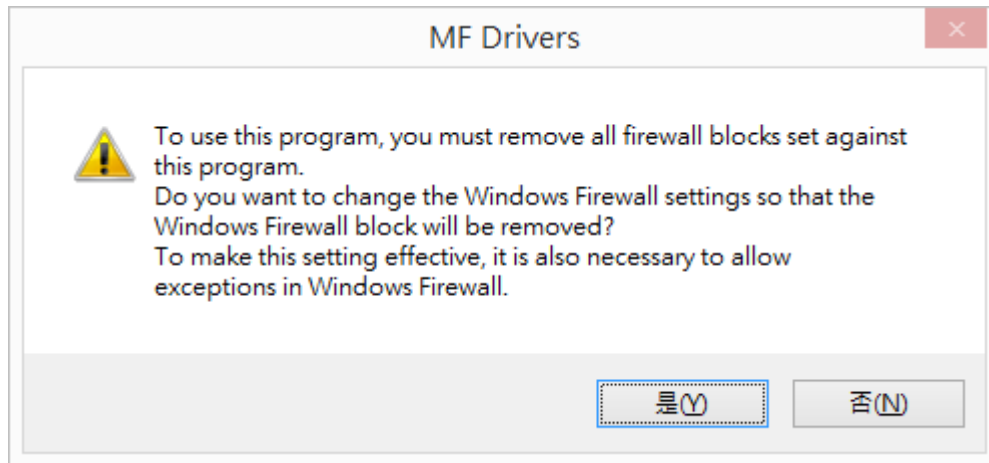
3. 按「Yes」
Press 「Yes」



4. 選擇「Network Connection (for Network Models)」，按「Next」
Choose 「Network Connection (for Network Models)」, press 「Next」



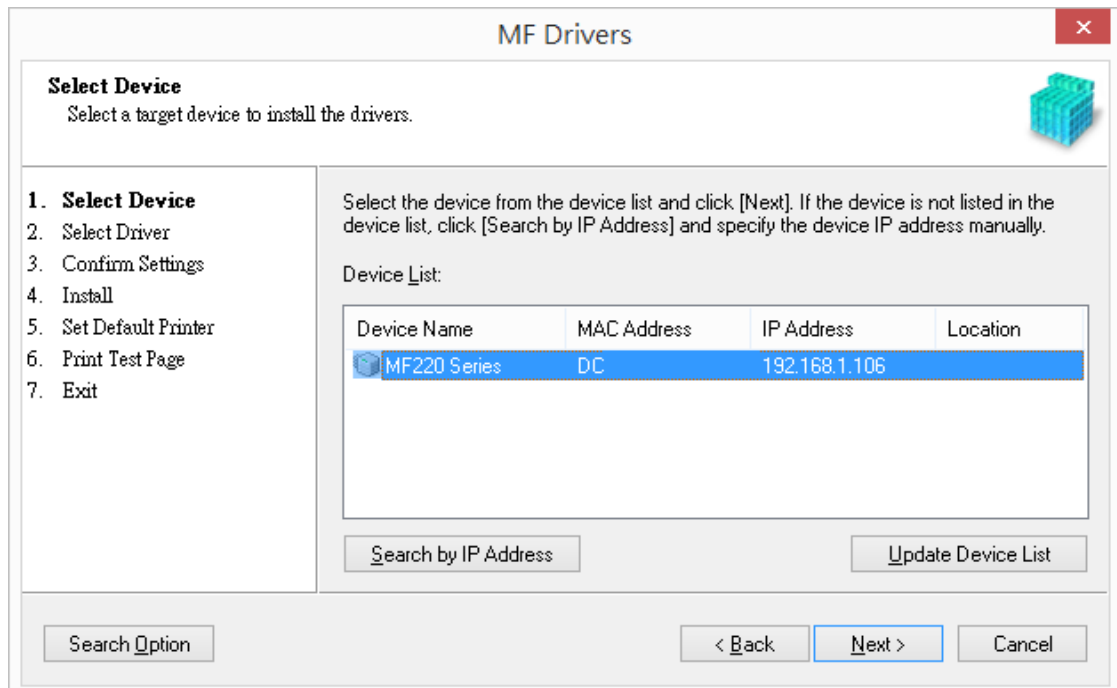
5. 確定已移除所有防火牆對此程式的封鎖設定，按「是」
Make sure already remove all firewall blocks set against this program



6. 搜尋裝置中
Searching for device...



7. 確定在列表中選取印表機後按「Next」
Select the device from the device list, press 「Next」



8. 建議選取所有驅動程式 (預設) , 按 「 Next 」
Suggest choose all driver to install (Default), press 「 Next 」

MF Drivers

Select Driver
Select the drivers to install.

1. Select Device
- 2. Select Driver**
3. Confirm Settings
4. Install
5. Set Default Printer
6. Print Test Page
7. Exit

Target Device
Canon MF220 Series

Driver to Install:

- Printer
- Fax (for Supported Models)
- Scanner
- Canon Driver Information Assist Service
When you install this service and use shared or local printers, functions that allow you to obtain device information will be added to your computer.

< Back Next > Cancel

9. 建議選取所有驅動程式 (預設) , 按 「 Next 」
Suggest choose all driver to install (Default), press 「 Next 」

MF Drivers

Select Driver
Select the drivers to install.

1. Select Device
- 2. Select Driver**
3. Confirm Settings
4. Install
5. Set Default Printer
6. Print Test Page
7. Exit

Target Device
Canon MF220 Series


Printer Drivers to Install:

- UFR II LT Printer Driver
- UFR II LT XPS Printer Driver

< Back Next > Cancel

10. 按「Next」
Press 「Next」

MF Drivers ✕


Confirm Settings
Confirm the following setting details. 

<ol style="list-style-type: none">1. Select Device2. Select Driver3. Confirm Settings4. Install5. Set Default Printer6. Print Test Page7. Exit	<p>You can change the printer name. If you specify this printer as a shared printer, you can specify the shared printer name and set an additional driver (alternate driver). Confirm the settings, and then click [Next].</p> <p>Printer</p> <p>Port: CNMFNP_DC Driver: Canon MF220 Series</p> <p>Printer Name: <input type="text" value="Canon MF220 Series"/></p> <p><input type="checkbox"/> Use as Shared Printer</p> <p>Shared Name: <input type="text"/></p> <p style="text-align: right;">Current Device: 1 Number of Devices to Set: 3</p>
---	--

< Back Next > Cancel

11. 按「Next」
Press 「Next」

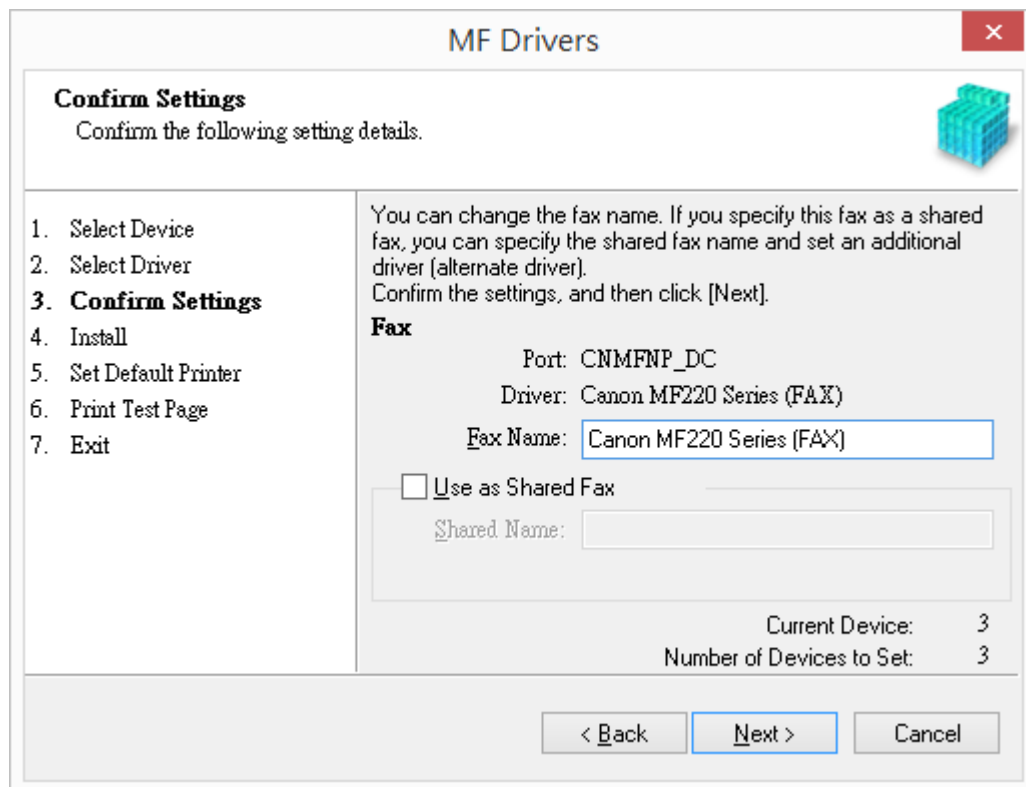
MF Drivers ✕

Confirm Settings
Confirm the following setting details. 

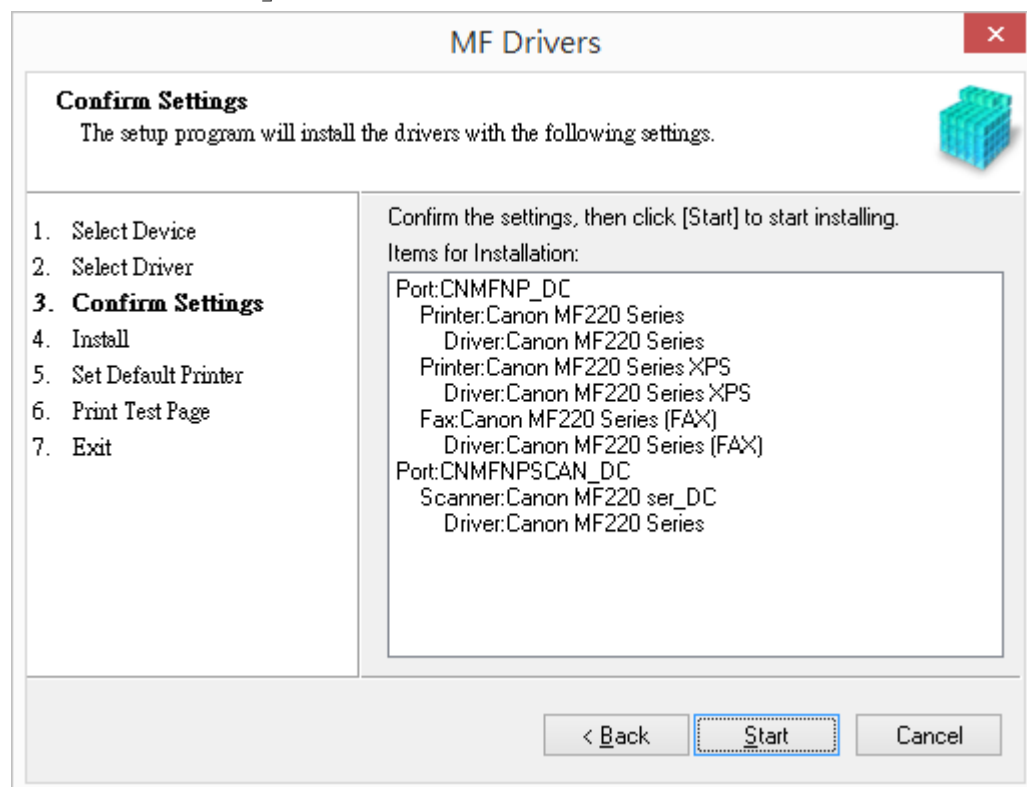
<ol style="list-style-type: none">1. Select Device2. Select Driver3. Confirm Settings4. Install5. Set Default Printer6. Print Test Page7. Exit	<p>You can change the printer name. If you specify this printer as a shared printer, you can specify the shared printer name and set an additional driver (alternate driver). Confirm the settings, and then click [Next].</p> <p>Printer</p> <p>Port: CNMFNP_DC Driver: Canon MF220 Series XPS</p> <p>Printer Name: <input type="text" value="Canon MF220 Series XPS"/></p> <p><input type="checkbox"/> Use as Shared Printer</p> <p>Shared Name: <input type="text"/></p> <p style="text-align: right;">Current Device: 2 Number of Devices to Set: 3</p>
---	--

< Back Next > Cancel

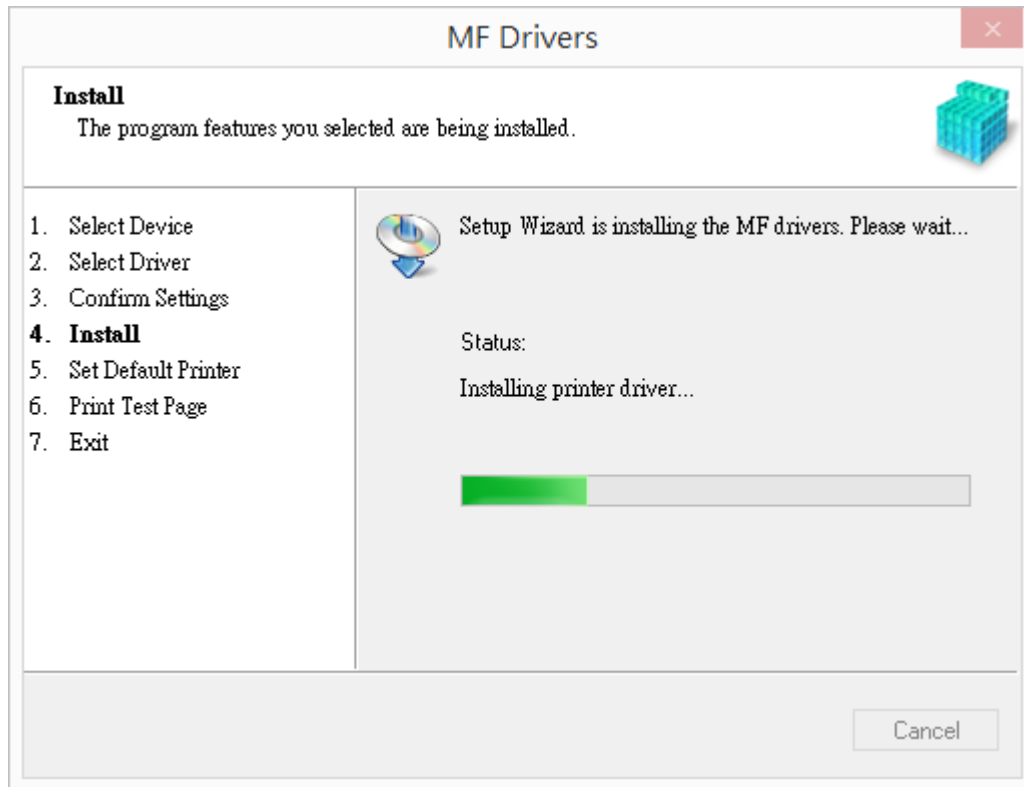
12. 按「Next」
Press 「Next」



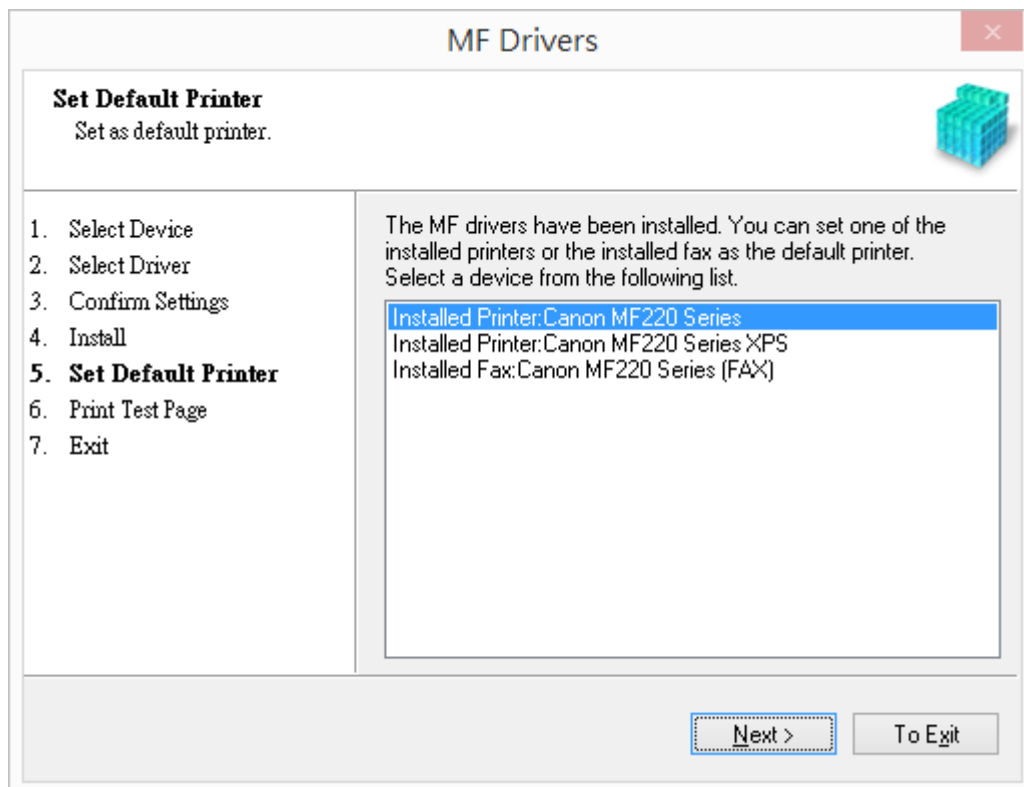
13. 按「Start」
Press 「Start」



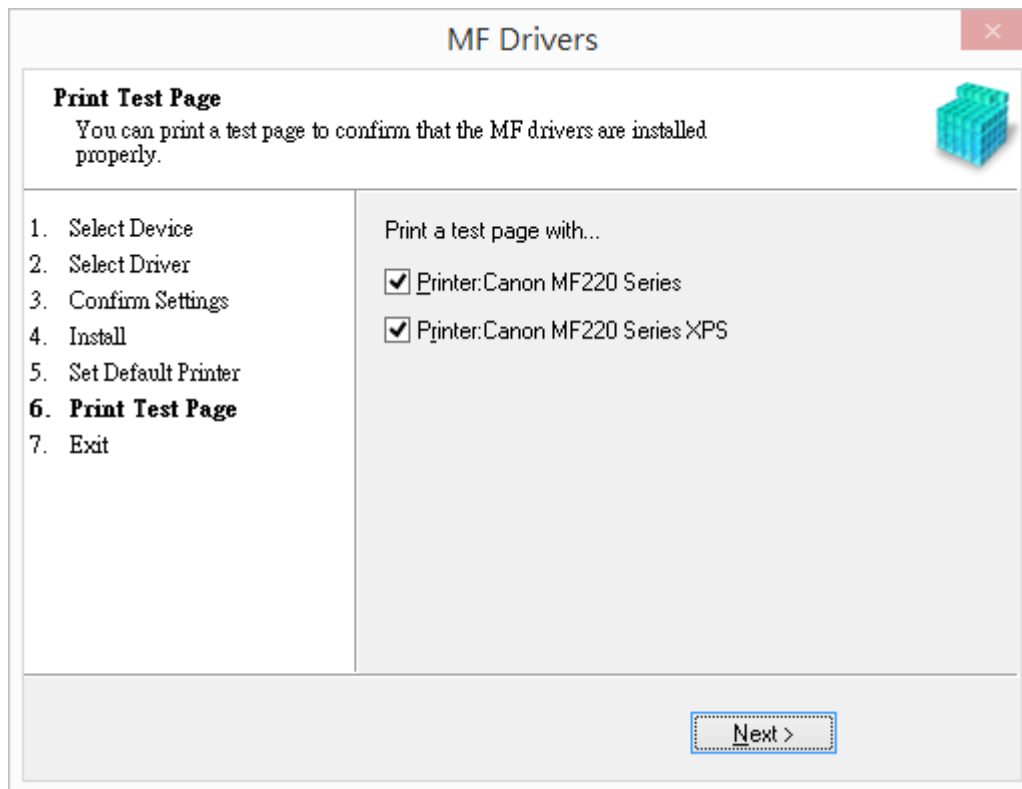
14. 安裝進行中
Installing printer driver



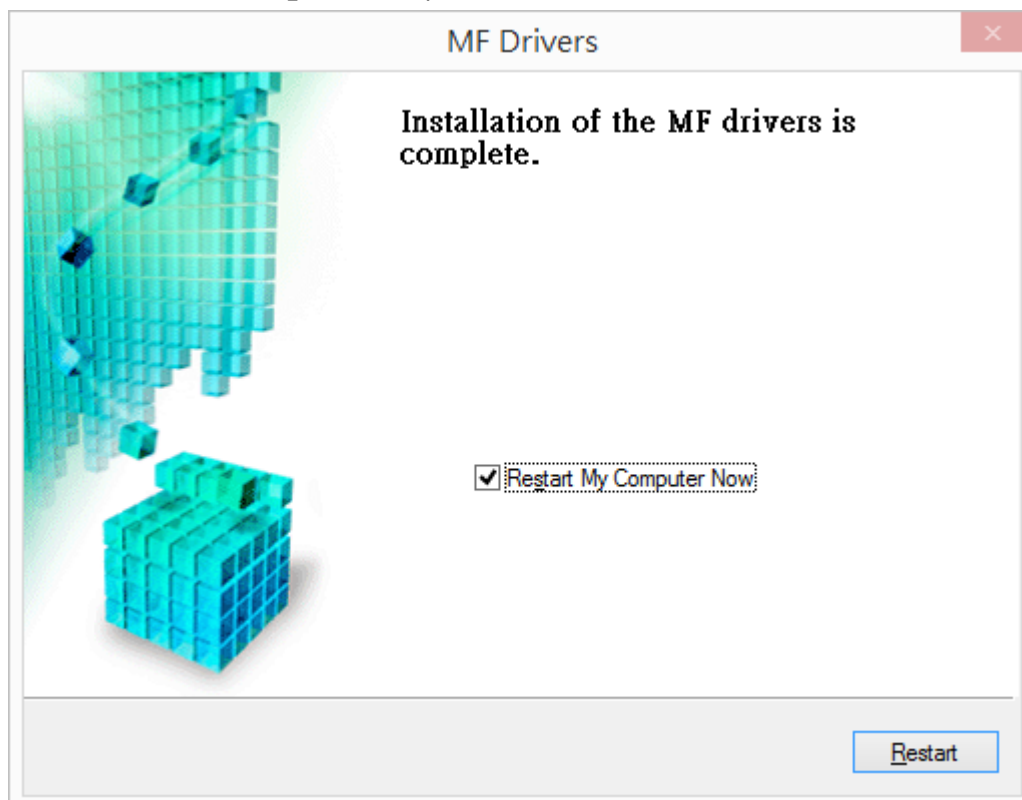
15. 選擇已安裝的印表機成預設印表機後按「Next」
Set one of the installed printer or fax as the default printer, press 「Next」



16. 可選擇列印測試頁，按「Next」
Can print a test page, press 「Next」



17. 按「Restart」後會自動重啟電腦，完成安裝
Press 「Restart」 then computer will restart and finish installation

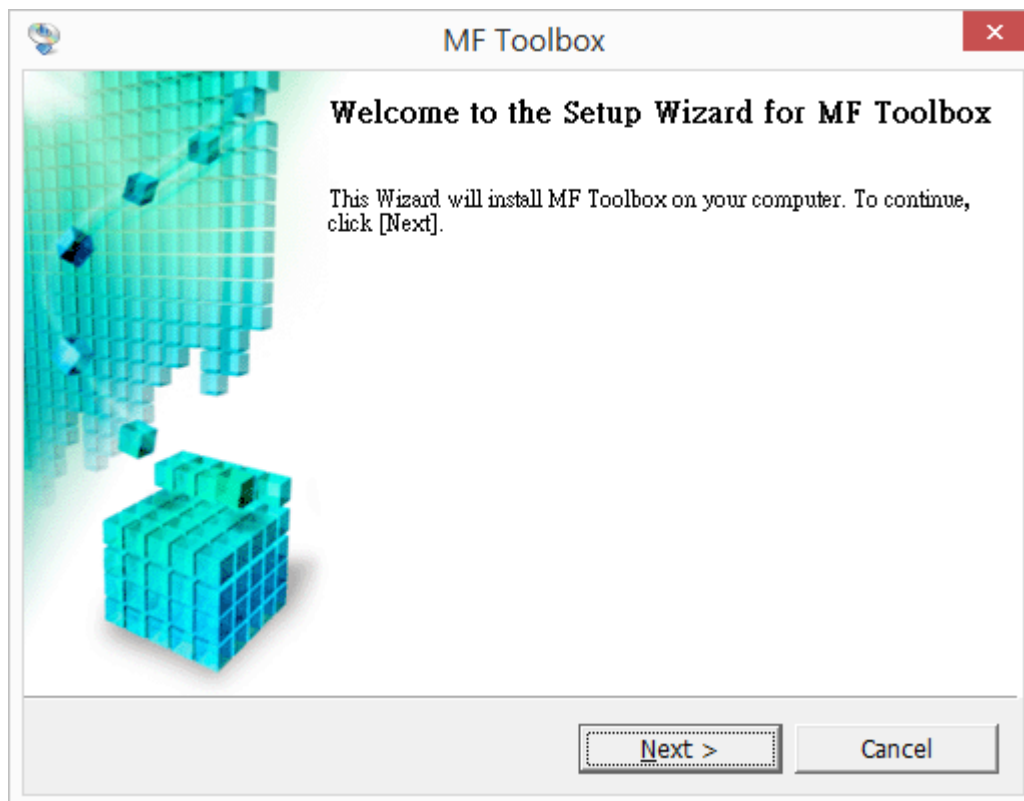


到佳能網站 <https://hk.canon/en/support> ，選擇相關的印表機型號及下載掃描軟件 MF Toolbox

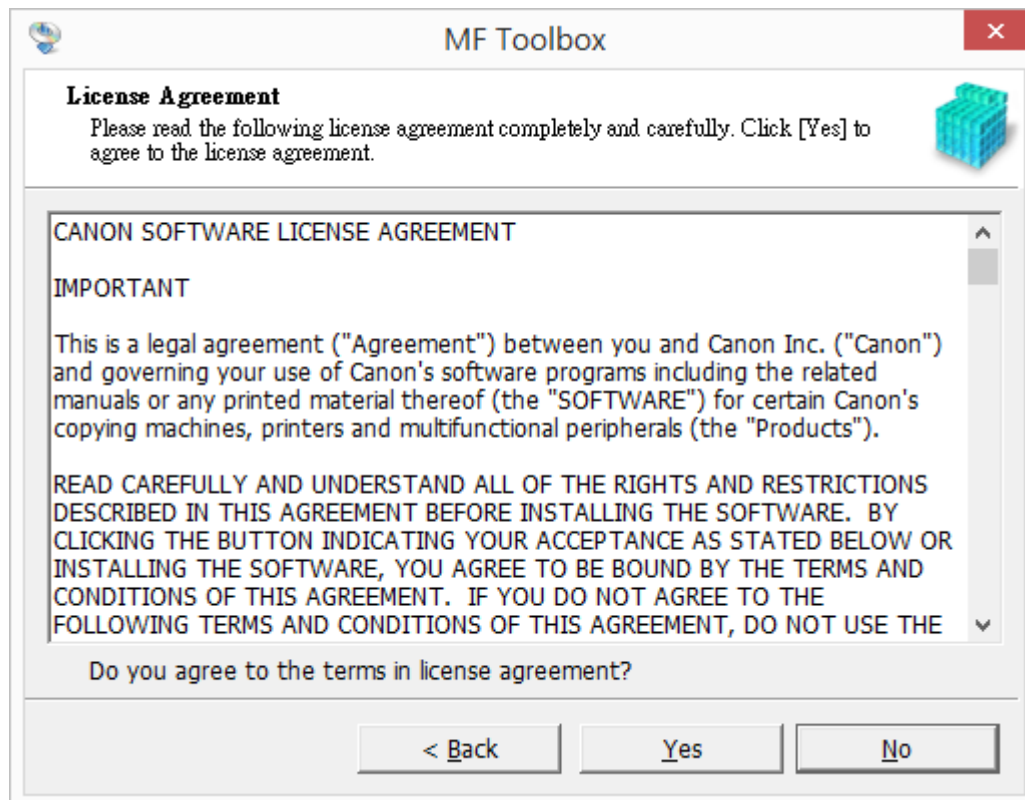
Go to: <https://hk.canon/en/support>, select related printer model, then download the scanner software MF Toolbox

18. 打開安裝掃描軟件 (MF Toolbox) 安裝檔案
Open MF Toolbox installation file

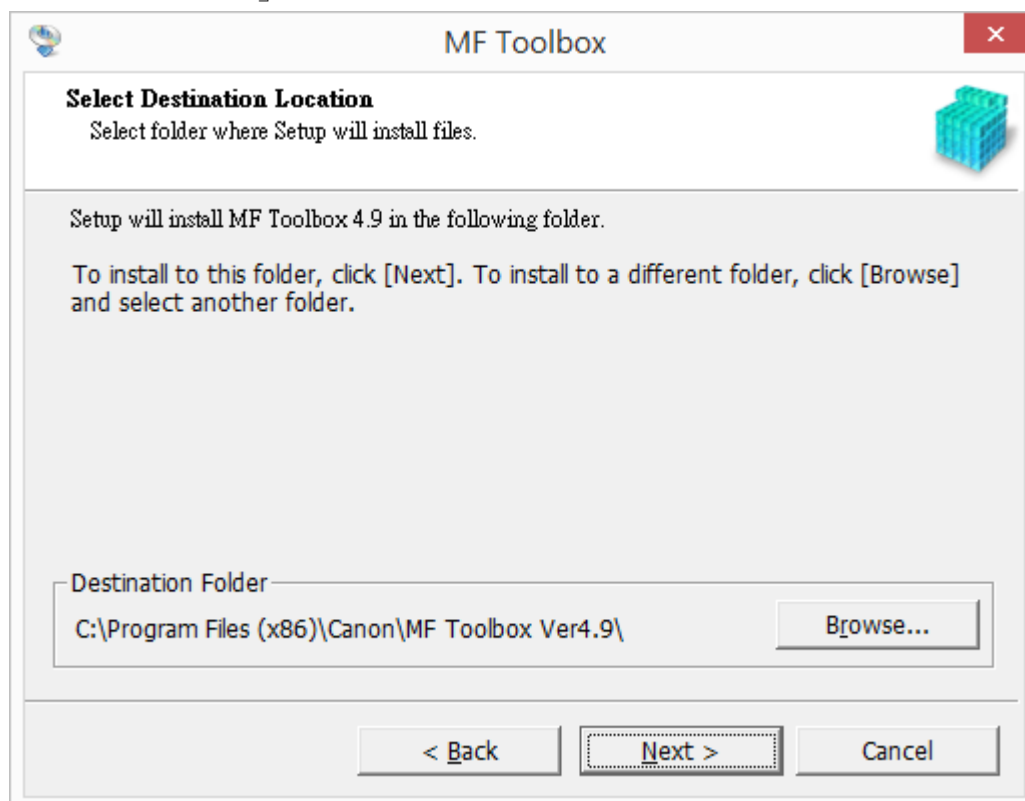
19. 按「Next」
Press 「Next」



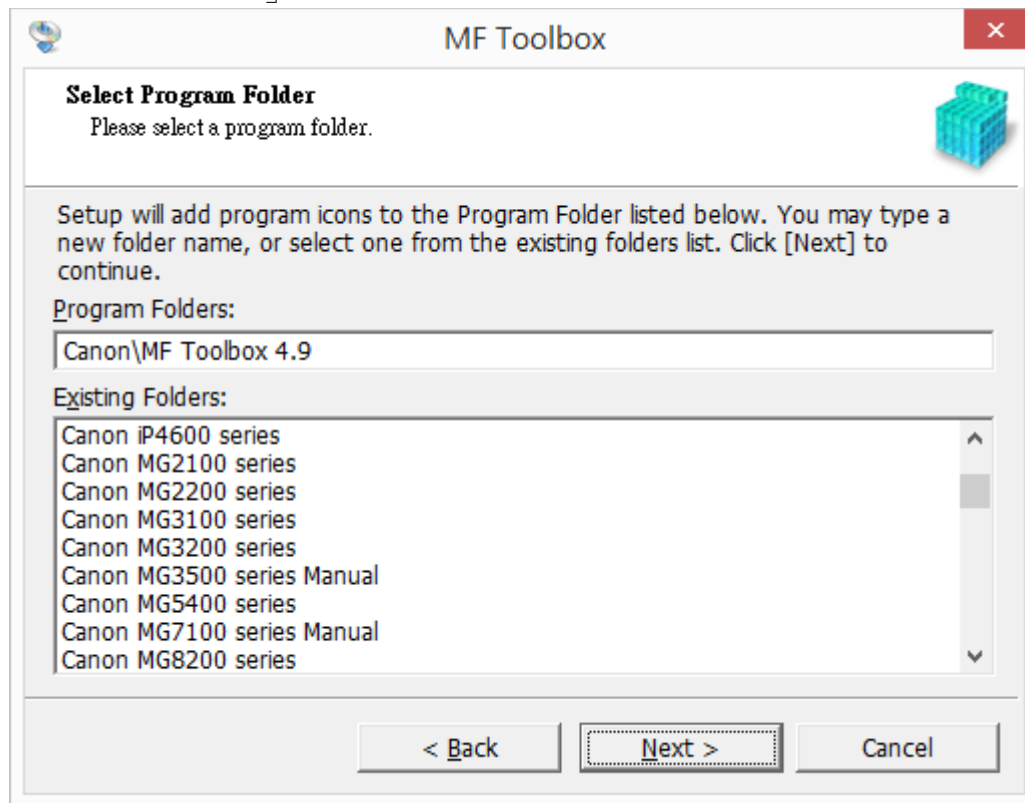
20. 按「是」
Press 「Yes」



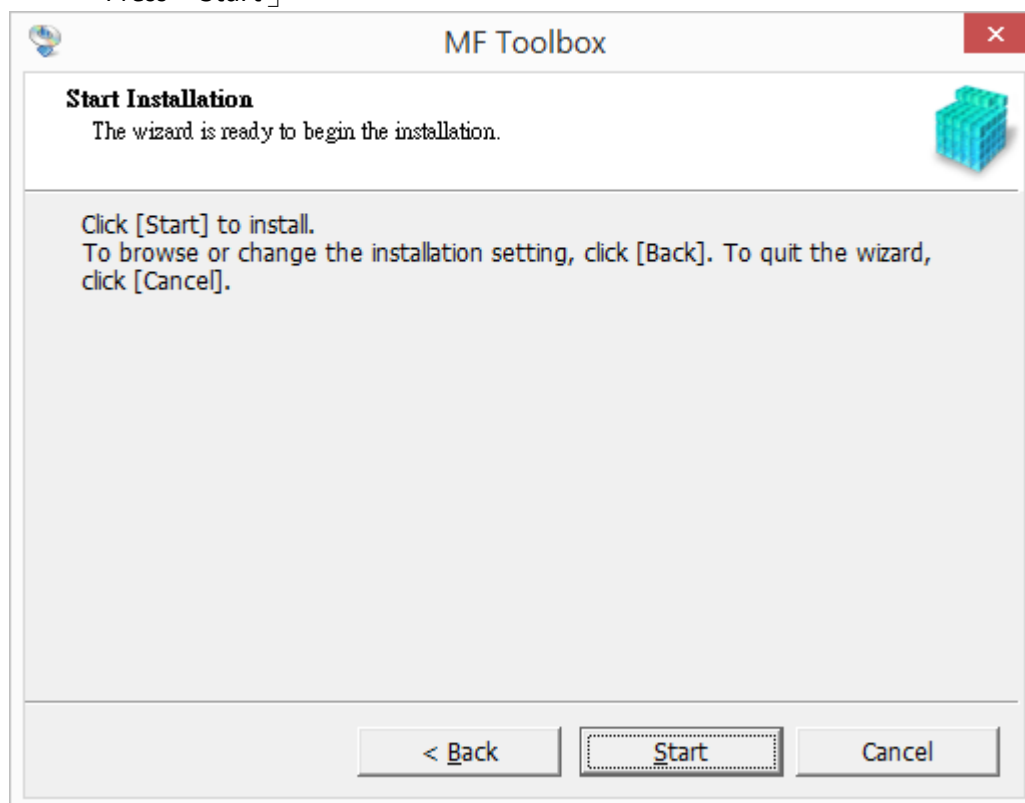
21. 按「Next」
Press 「Next」



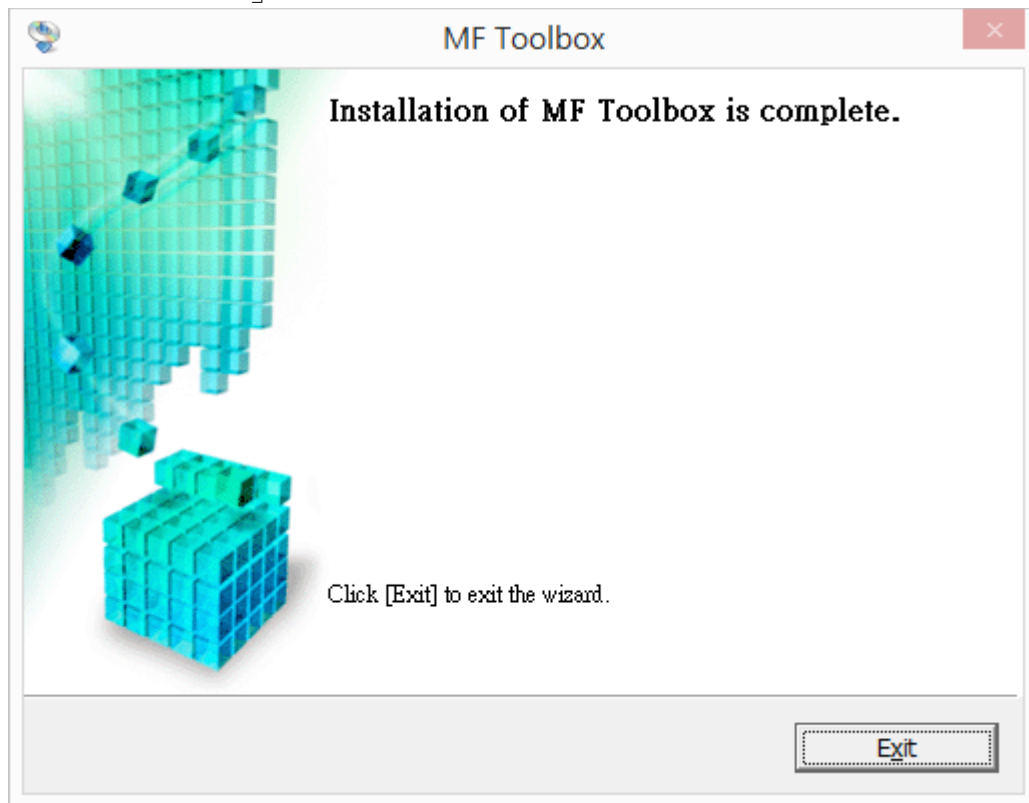
22. 按「Next」
Press 「Next」



23. 按「Start」
Press 「Start」



24. 按「Exit」完成安裝
Press 「Exit」 finish installation



-完-