

## MF3010 安裝 Win 8.1 透過 USB 纜線連線連接印表機之驅動程式步驟

**\*\*注意: 安裝驅動程式前請勿接駁 USB 線，以免系統發生錯誤\*\***

點擊以下連結下載有關之驅動程式

32 位元

Windows 10 / 8.1 / 8 / 7 / Vista / XP

<https://hk.canon/en/support/0200155904/15>

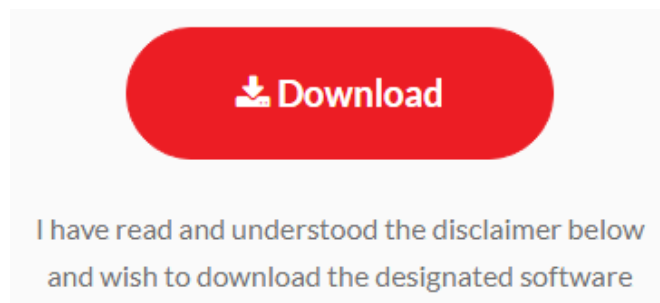
64 位元

Windows 10 / 8.1 / 8 / 7 / Vista / XP

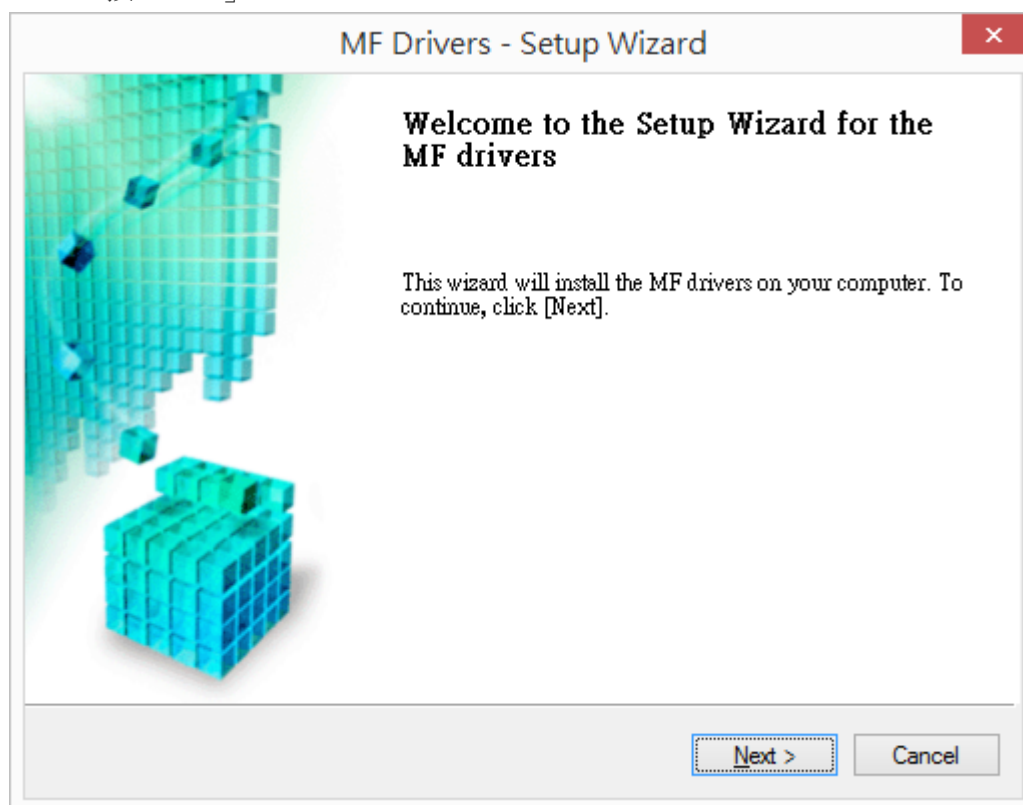
<https://hk.canon/en/support/0100367301/8>

下載及安裝步驟

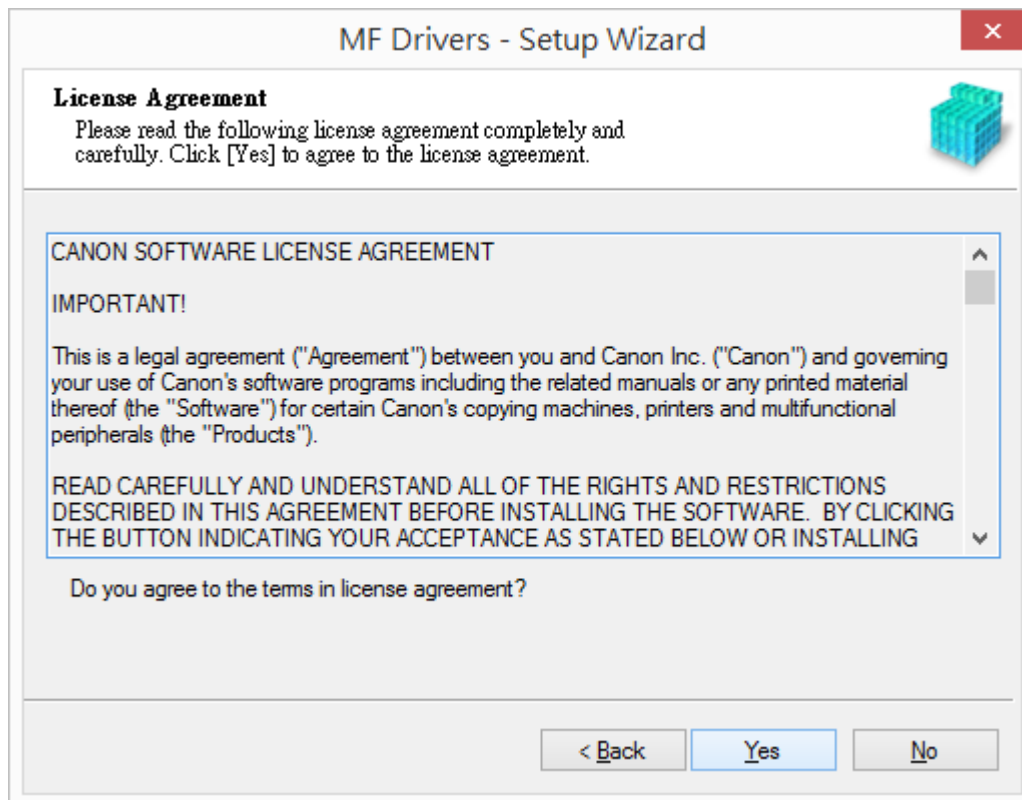
1. 按一下「Download」。下載完成後開啟該檔案安裝



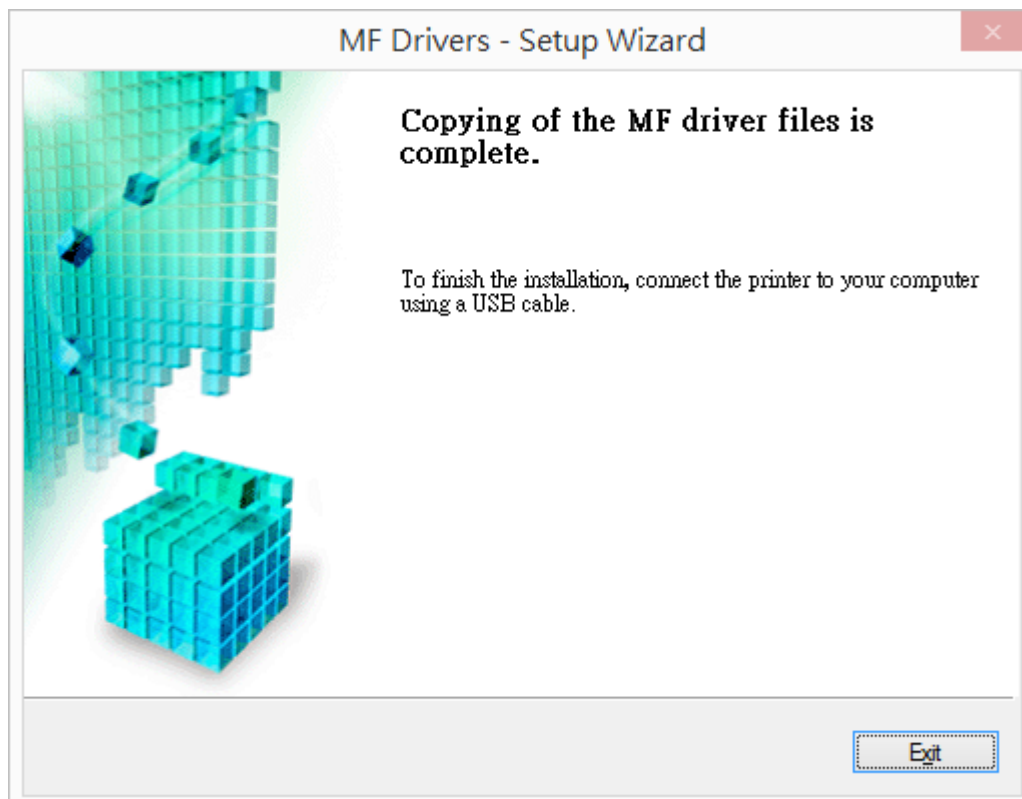
2. 按「Next」



3. 按「Yes」



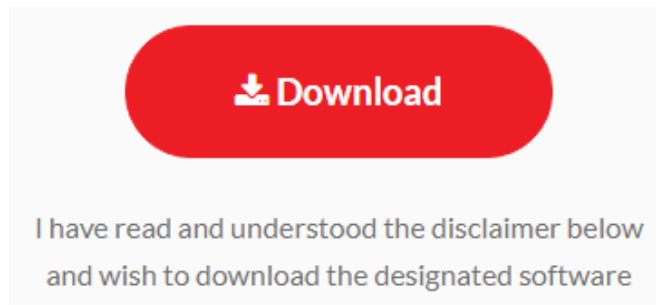
5. 按「Exit」並使用 USB 纜線將印表機連接到電腦



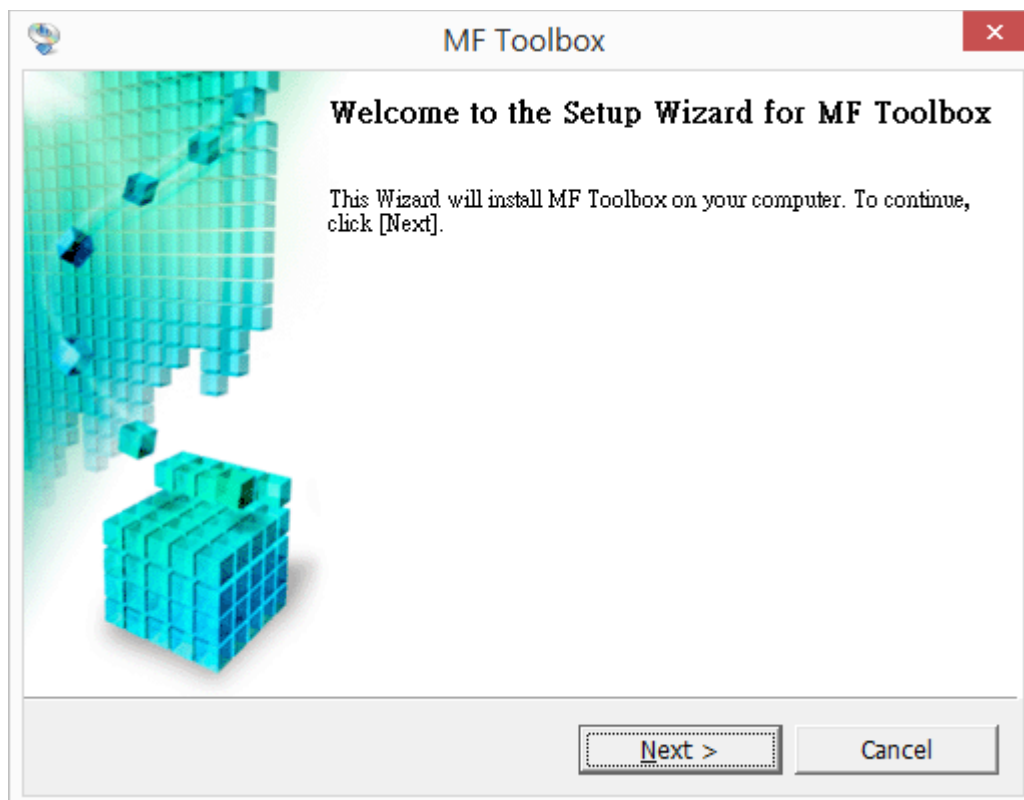
6. 點擊以下連結下載有關之軟件程式  
**[Windows 32bit & 64bit] Tool Box Ver.4.9.1.1.mf17**  
<https://hk.canon/en/support/0200155904/15>

下載及安裝步驟

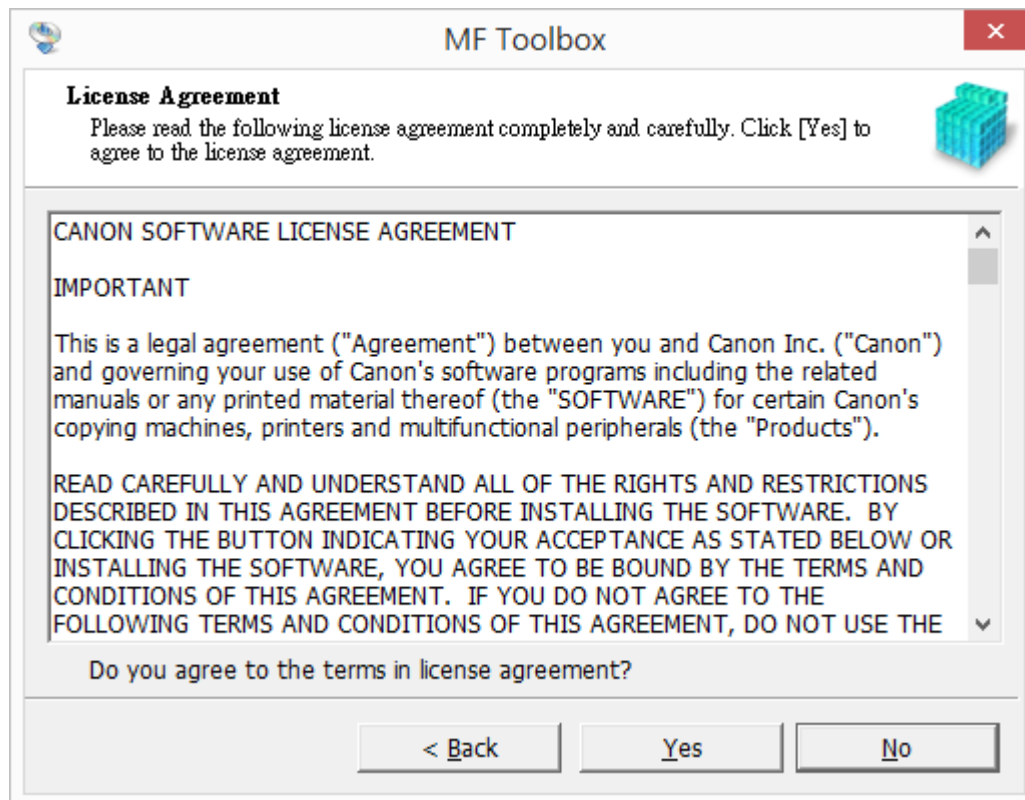
按一下「Download」。下載完成後開啟該檔案安裝



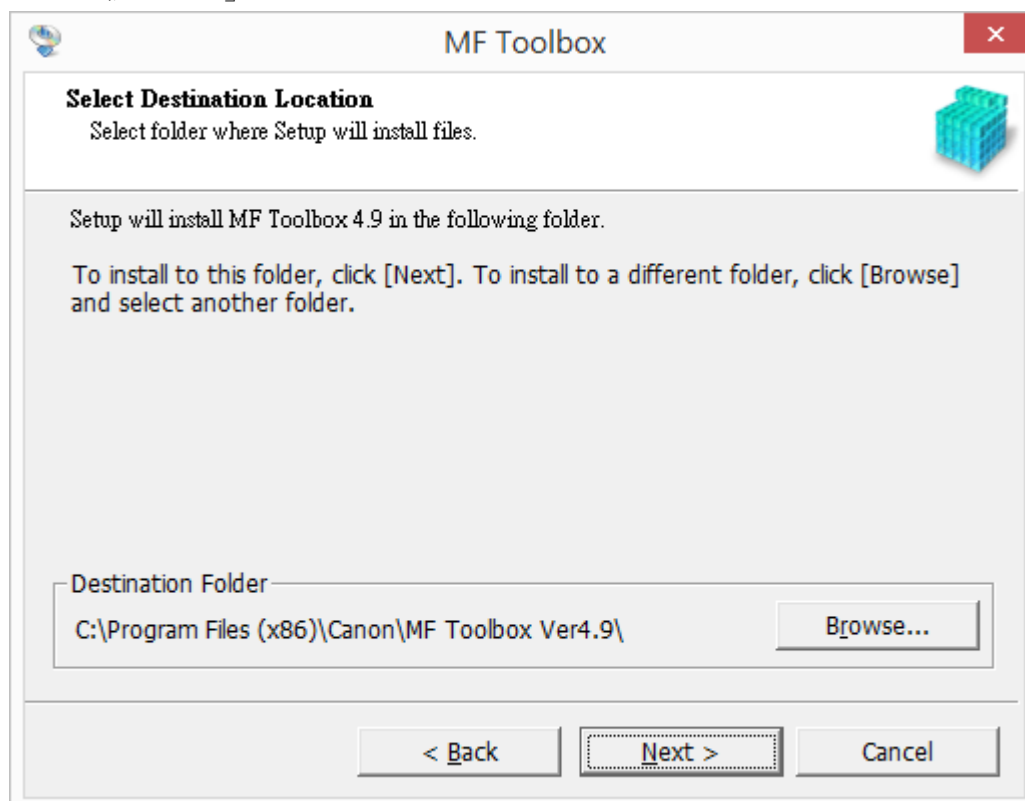
7. 按「Next」



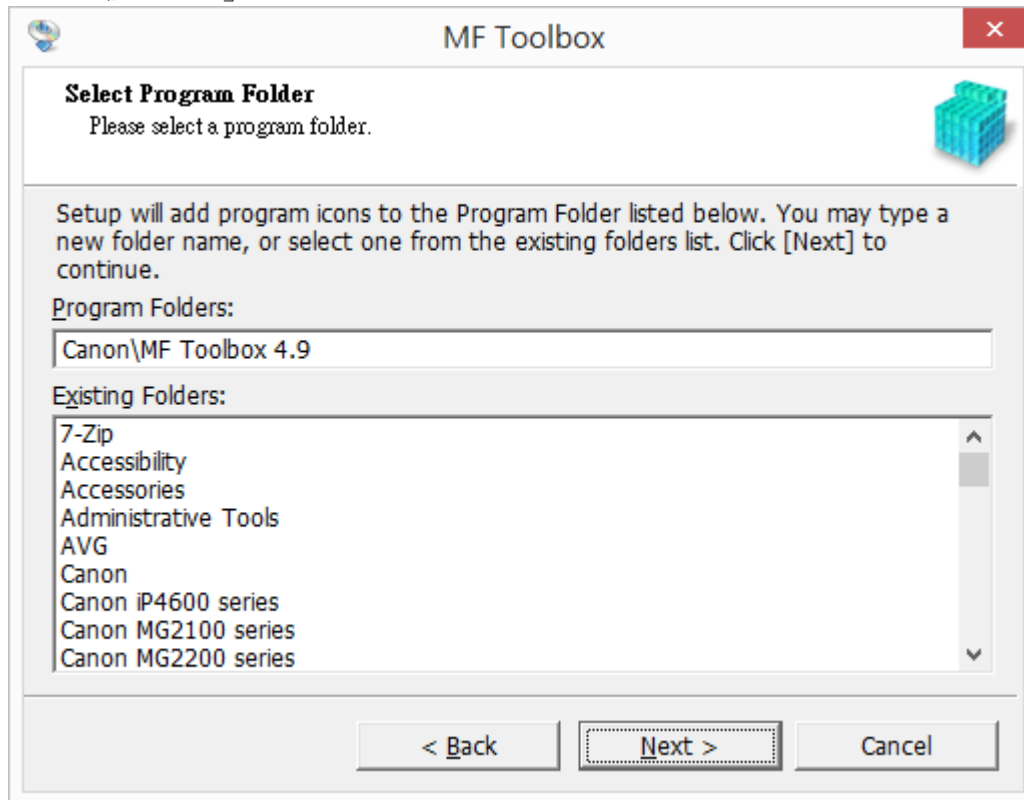
8. 按「Yes」



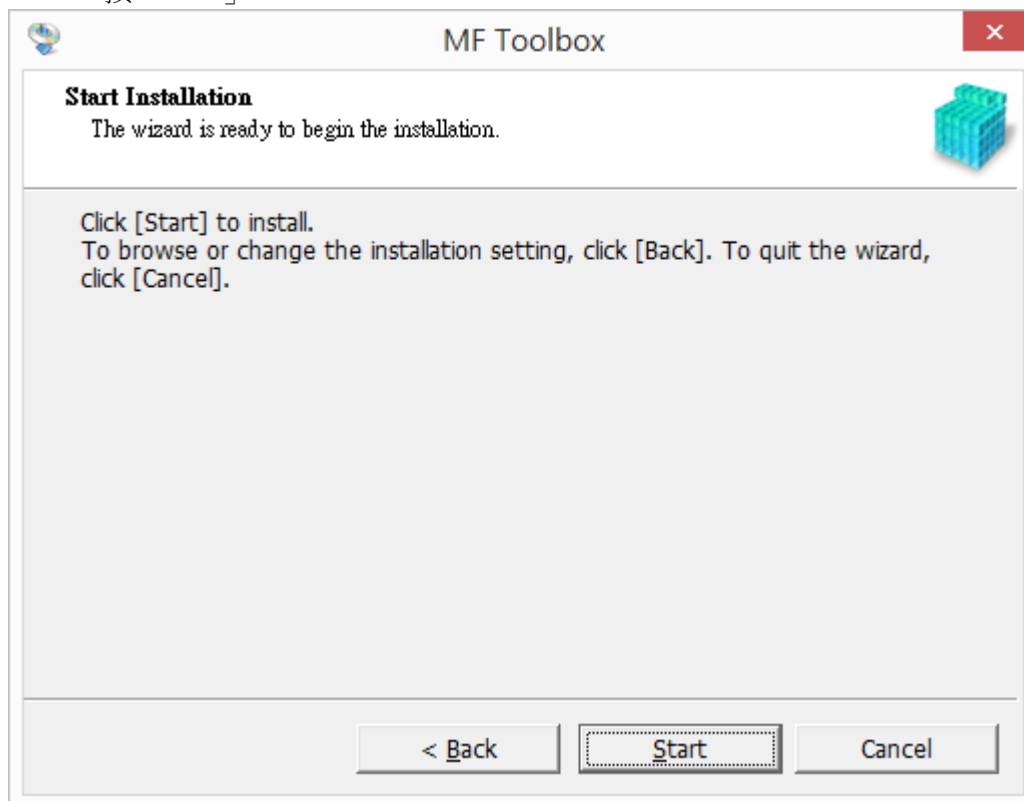
9. 按「Next」



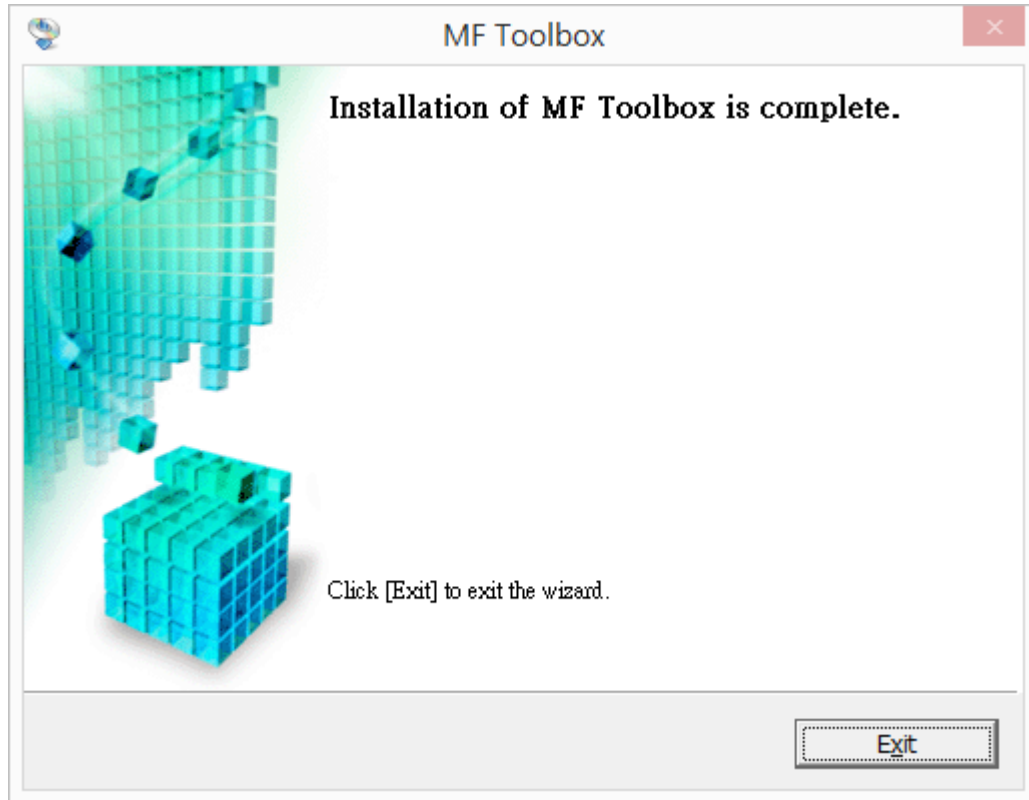
10. 按「Next」



11. 按「Start」



12. 按「Exit」



-完-