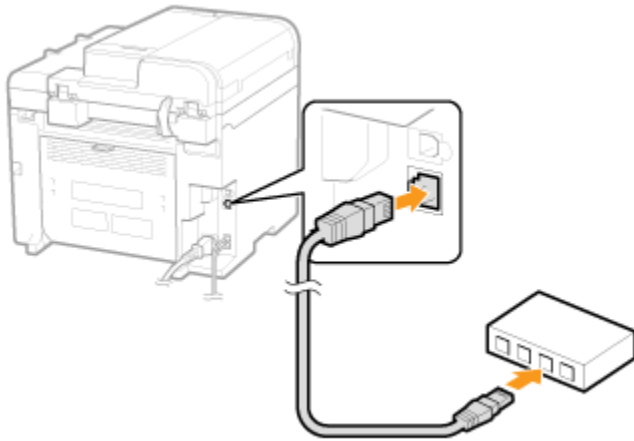
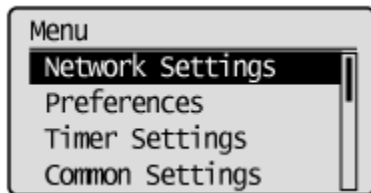


MF4870dn 安裝 Win 8.1 透過有線 LAN 連線連接印表機之驅動程式步驟

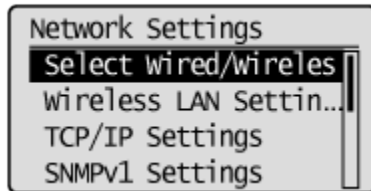
先將網絡線接駁至打印機 LAN 插頭:



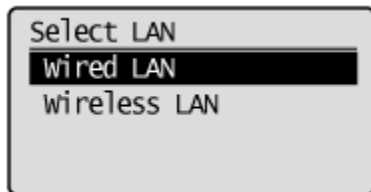
1. 按「功能表 (Menu)」 
2. 選擇「網路設定 (Network Settings)」，按「OK」



3. 選擇「選擇有線/無線區域網絡 (Select Wired/Wireless LAN)」，按「OK」



4. 選擇「有線區域網絡 (Wired LAN)」，按「OK」



完成後請點擊以下連結下載有關之驅動程式

用於 32 位元

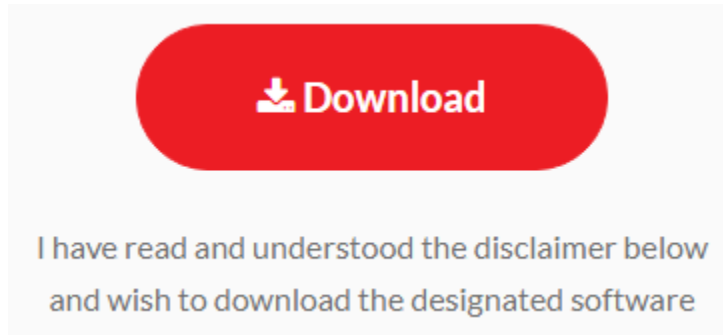
[Windows 32bit] imageCLASS MF4890dw/MF4870dn MFDivers (UFR II / FAX / ScanGear)
<https://hk.canon/en/support/0100444901/6>

用於 64 位元

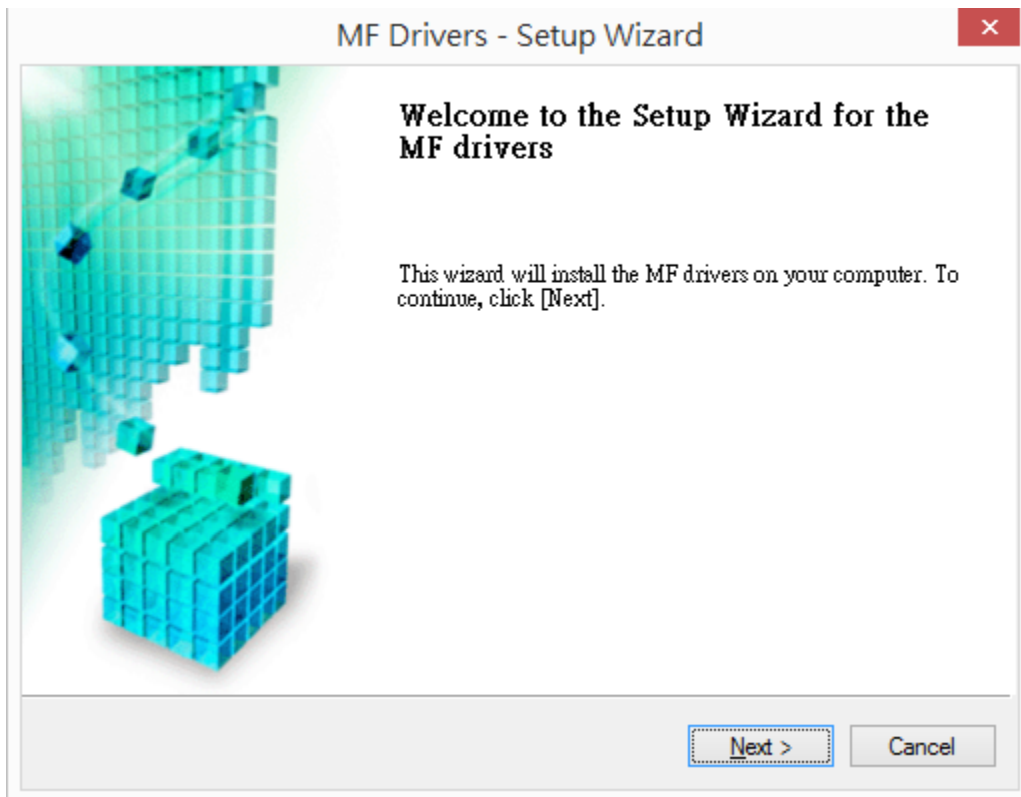
[Windows 64bit] imageCLASS MF4890dw/MF4870dn MFDivers (UFR II / FAX / ScanGear)
<https://hk.canon/en/support/0100445001/8>

下載及安裝步驟

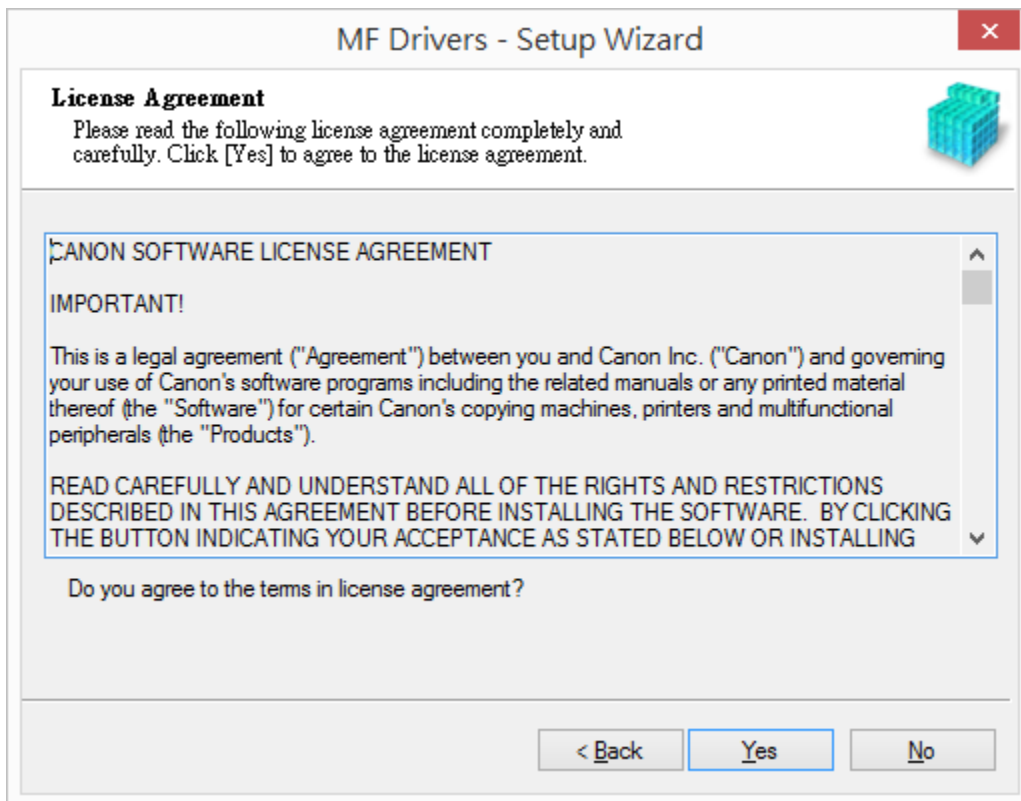
1. 按一下「Download」。下載完成後開啟該檔案安裝



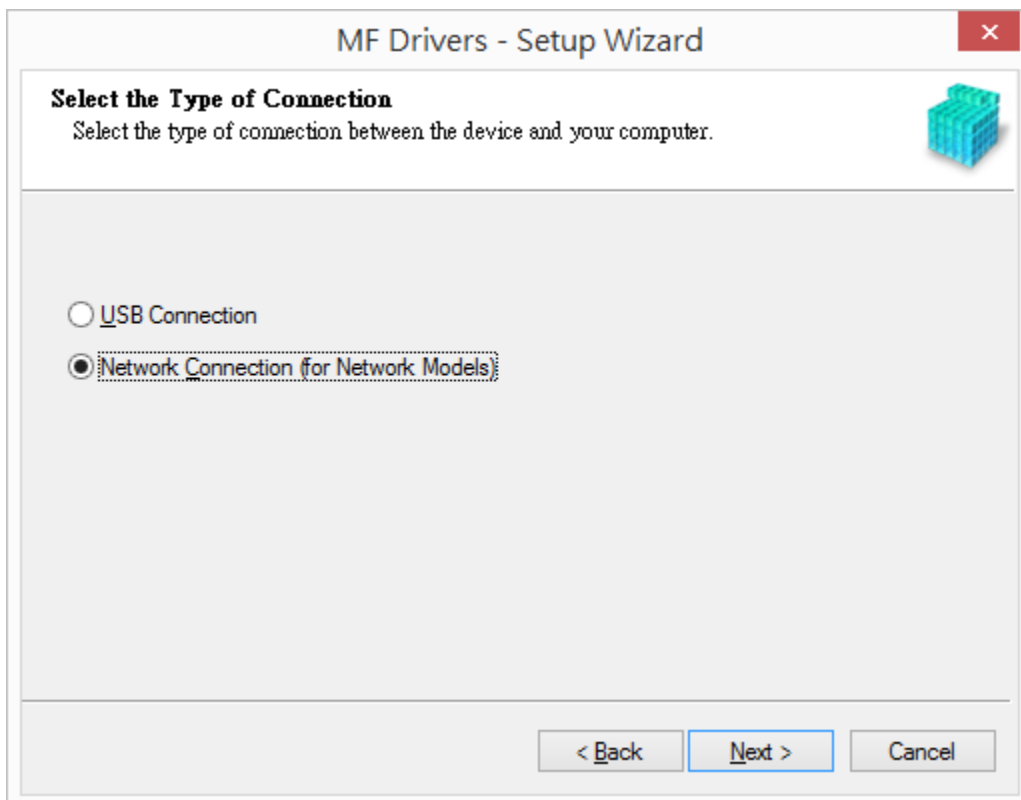
2. 按「Next」



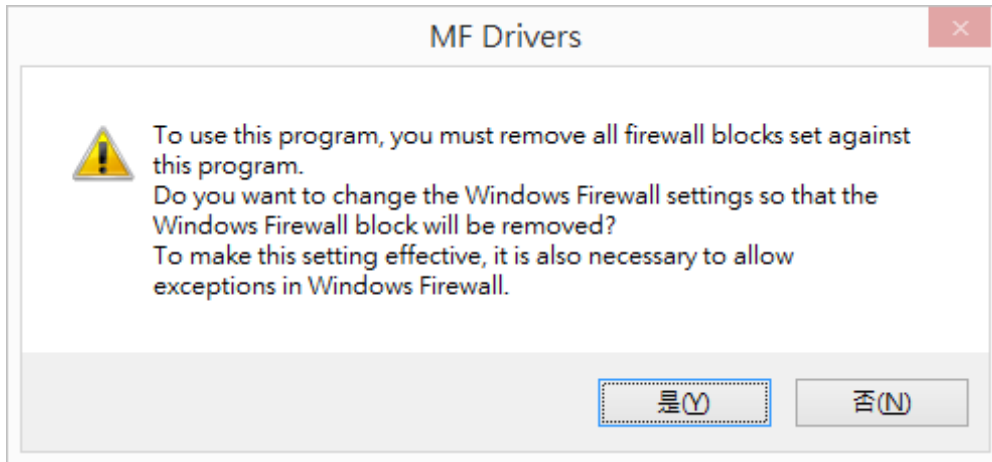
3. 按「Yes」



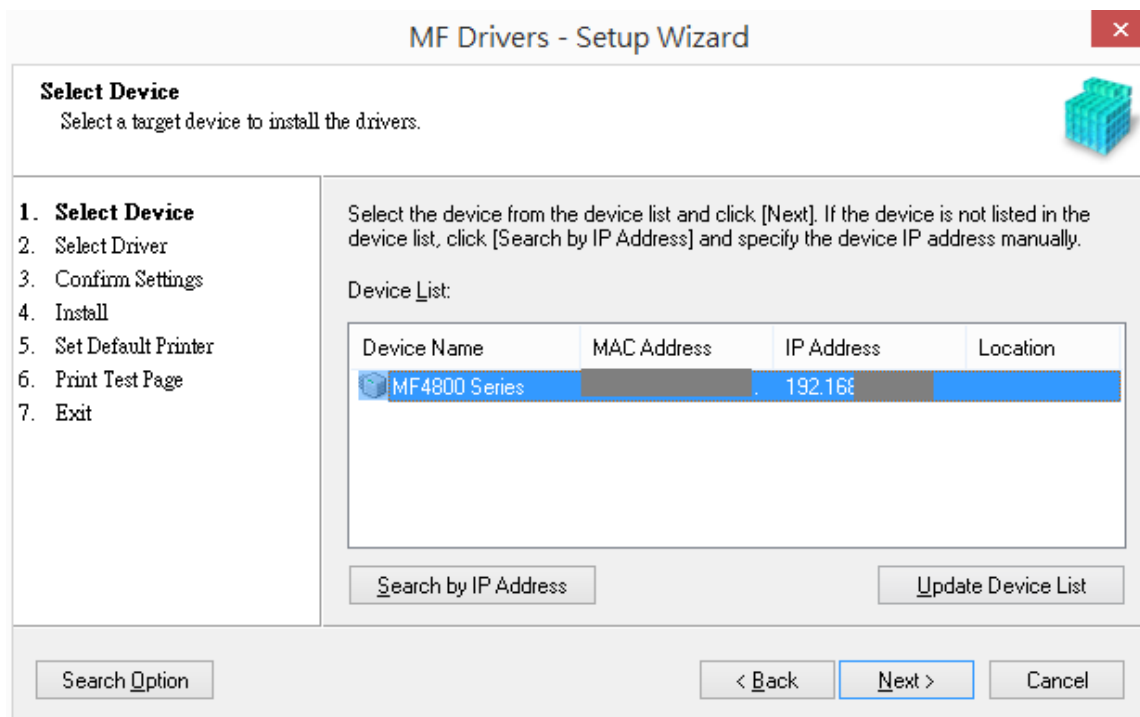
4. 選擇「Network Connection (for Network Models)」



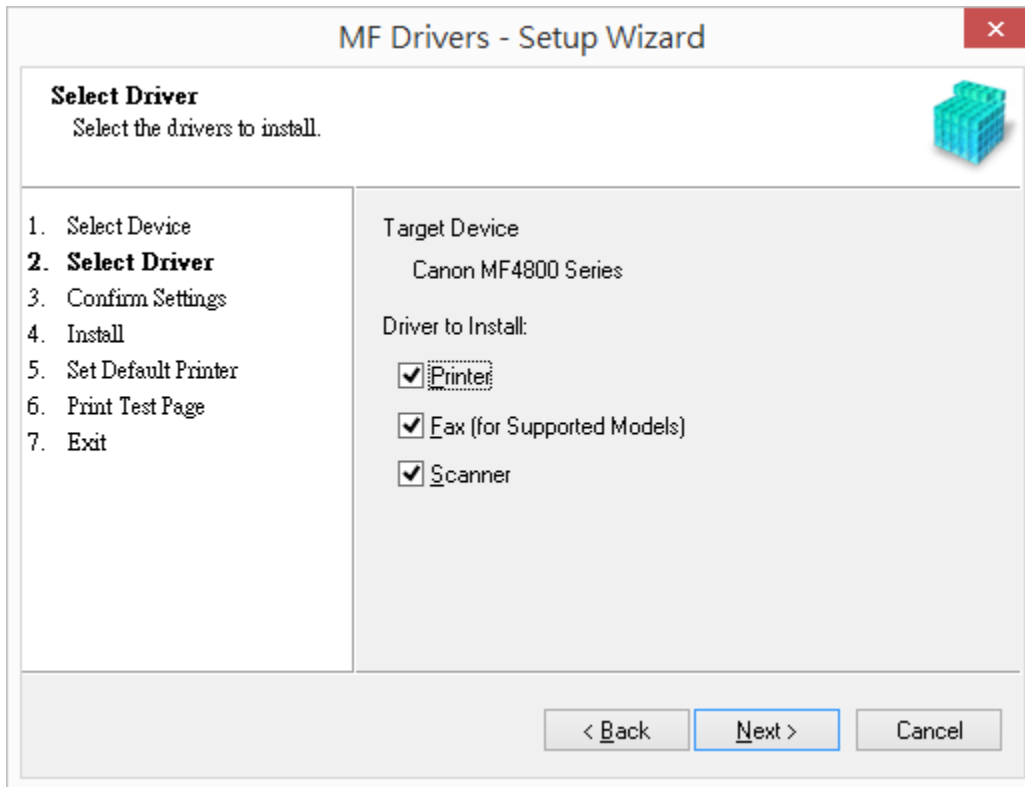
5. 確定已移除所有防火牆對此程式的封鎖設定



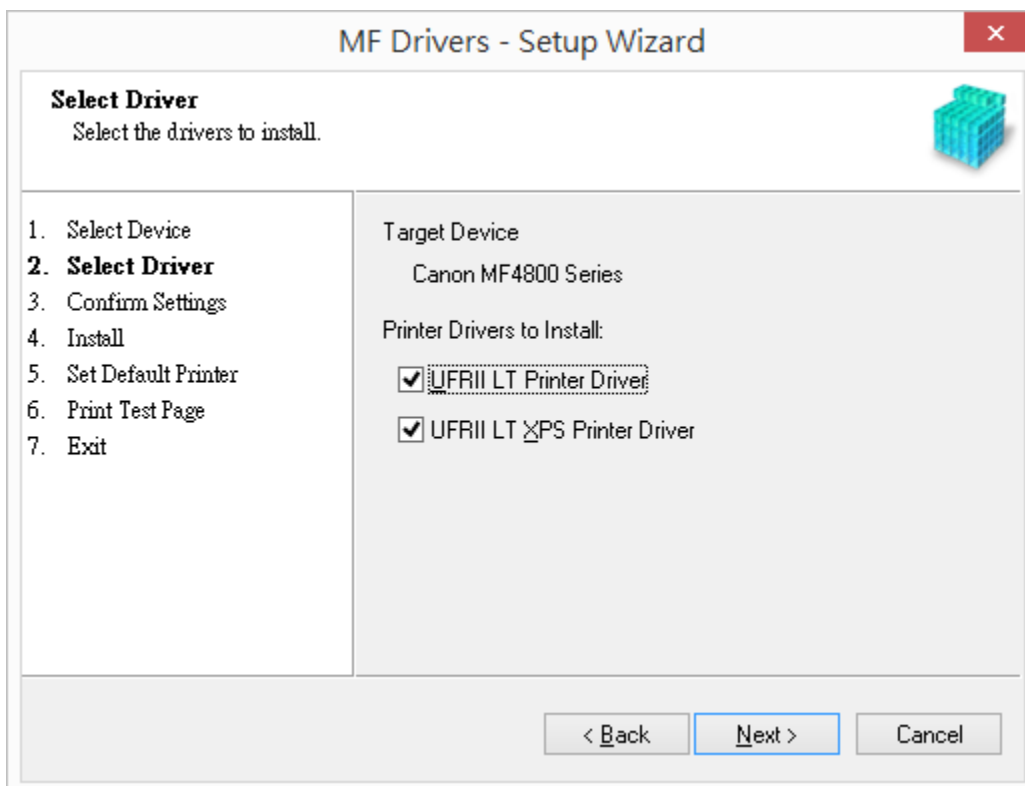
6. 按「Next」



7. 按「Next」



8. 按「Next」



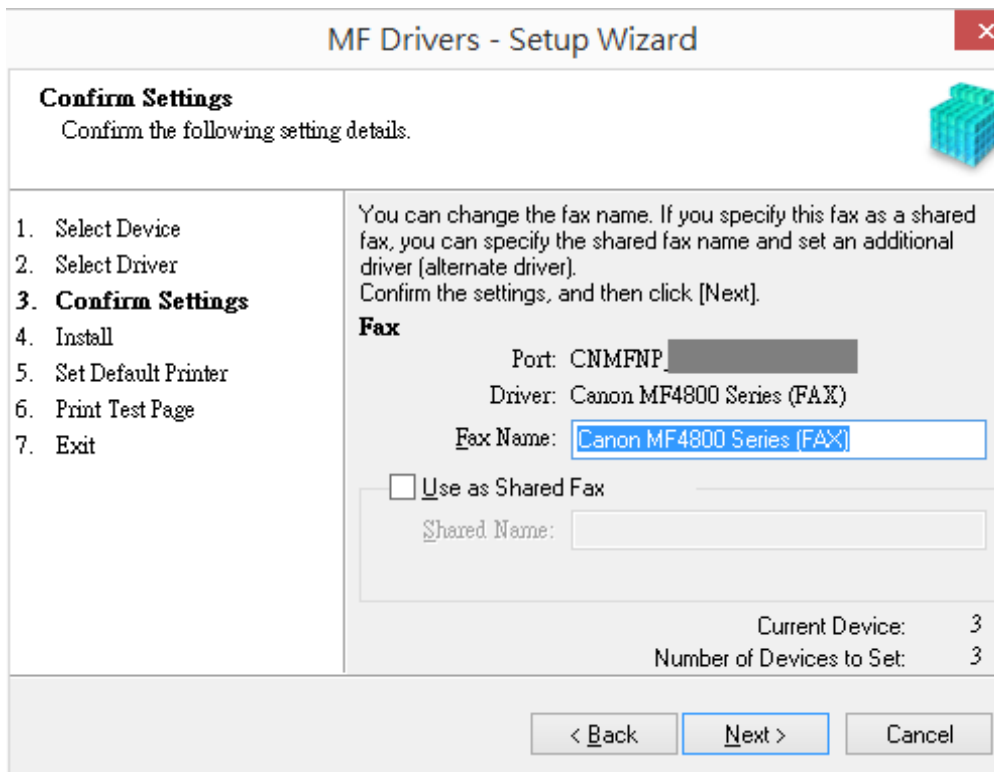
9. 按「Next」

The screenshot shows the 'MF Drivers - Setup Wizard' window at the 'Confirm Settings' step. The window title is 'MF Drivers - Setup Wizard' with a close button (X) in the top right corner. Below the title bar, there is a 'Confirm Settings' section with a sub-header 'Confirm the following setting details.' and a small printer icon. On the left, a list of steps is shown: 1. Select Device, 2. Select Driver, 3. **Confirm Settings**, 4. Install, 5. Set Default Printer, 6. Print Test Page, 7. Exit. The main area contains instructions: 'You can change the printer name. If you specify this printer as a shared printer, you can specify the shared printer name and set an additional driver (alternate driver). Confirm the settings, and then click [Next].' Below this is the 'Printer' section with the following details: Port: CNMFNP [redacted], Driver: Canon MF4800 Series UFR II LT, and Printer Name: Canon MF4800 Series UFR II LT(1) (highlighted in blue). There is an unchecked checkbox for 'Use as Shared Printer' and an empty 'Shared Name' text box. At the bottom right, it shows 'Current Device: 1' and 'Number of Devices to Set: 3'. At the very bottom, there are three buttons: '< Back', 'Next >', and 'Cancel'.

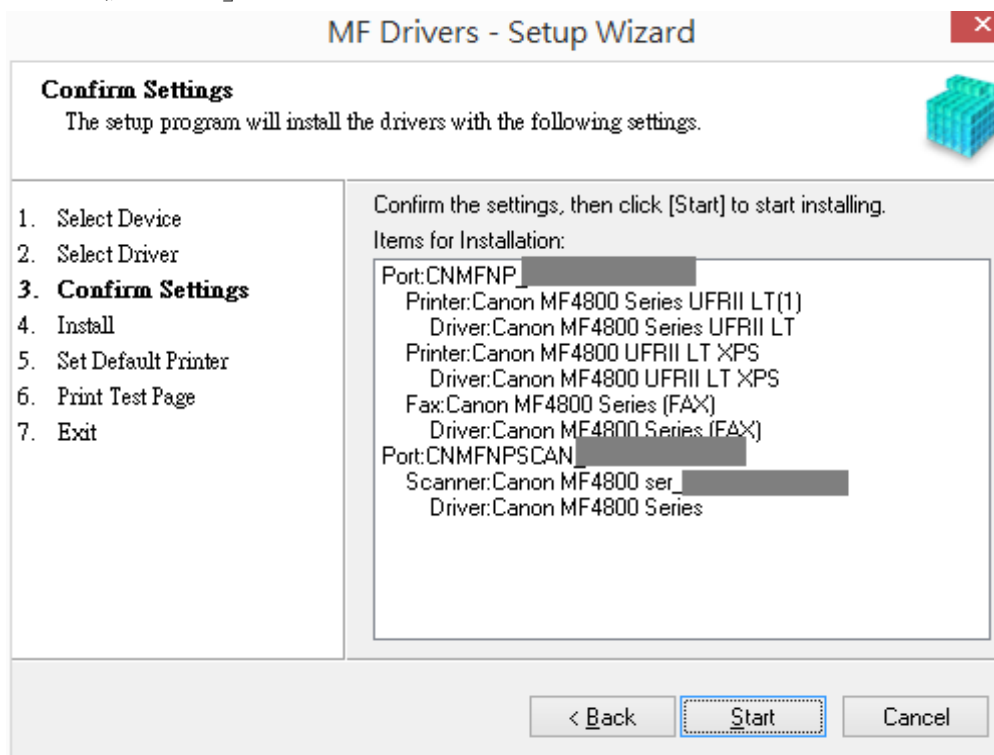
10. 按「Next」

The screenshot shows the 'MF Drivers - Setup Wizard' window at the 'Confirm Settings' step. The window title is 'MF Drivers - Setup Wizard' with a close button (X) in the top right corner. Below the title bar, there is a 'Confirm Settings' section with a sub-header 'Confirm the following setting details.' and a small printer icon. On the left, a list of steps is shown: 1. Select Device, 2. Select Driver, 3. **Confirm Settings**, 4. Install, 5. Set Default Printer, 6. Print Test Page, 7. Exit. The main area contains instructions: 'You can change the printer name. If you specify this printer as a shared printer, you can specify the shared printer name and set an additional driver (alternate driver). Confirm the settings, and then click [Next].' Below this is the 'Printer' section with the following details: Port: CNMFNP [redacted], Driver: Canon MF4800 UFR II LT XPS, and Printer Name: Canon MF4800 UFR II LT XPS (highlighted in blue). There is an unchecked checkbox for 'Use as Shared Printer' and an empty 'Shared Name' text box. At the bottom right, it shows 'Current Device: 2' and 'Number of Devices to Set: 3'. At the very bottom, there are three buttons: '< Back', 'Next >', and 'Cancel'.

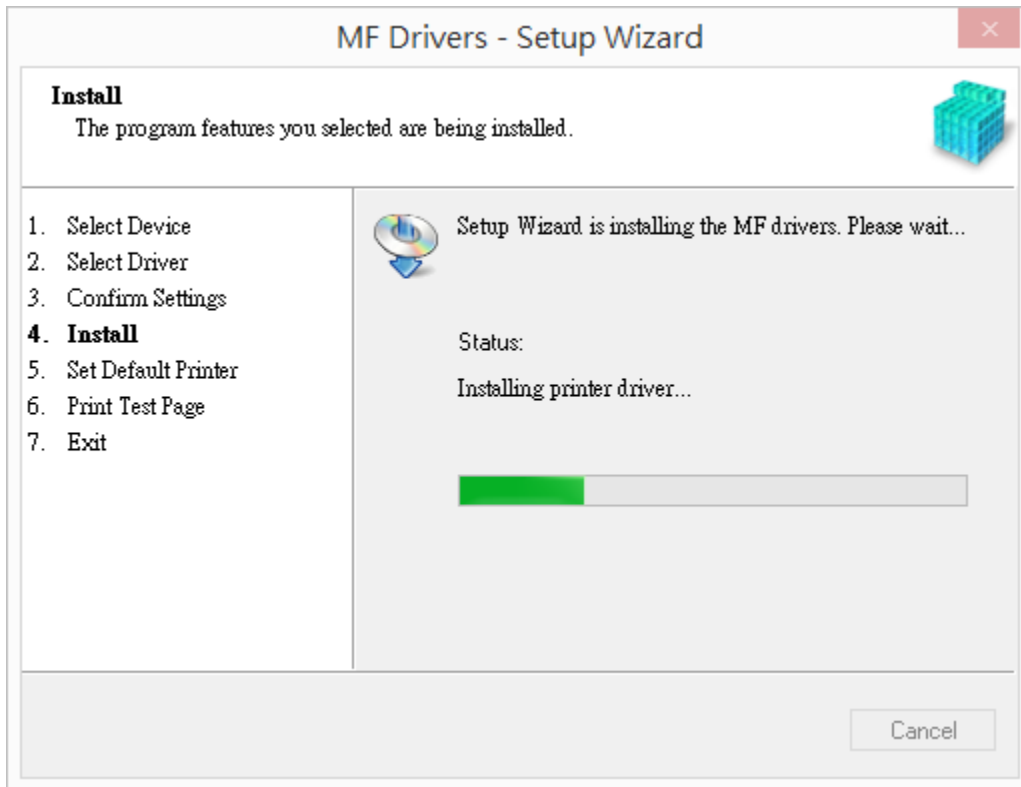
11. 按「Next」



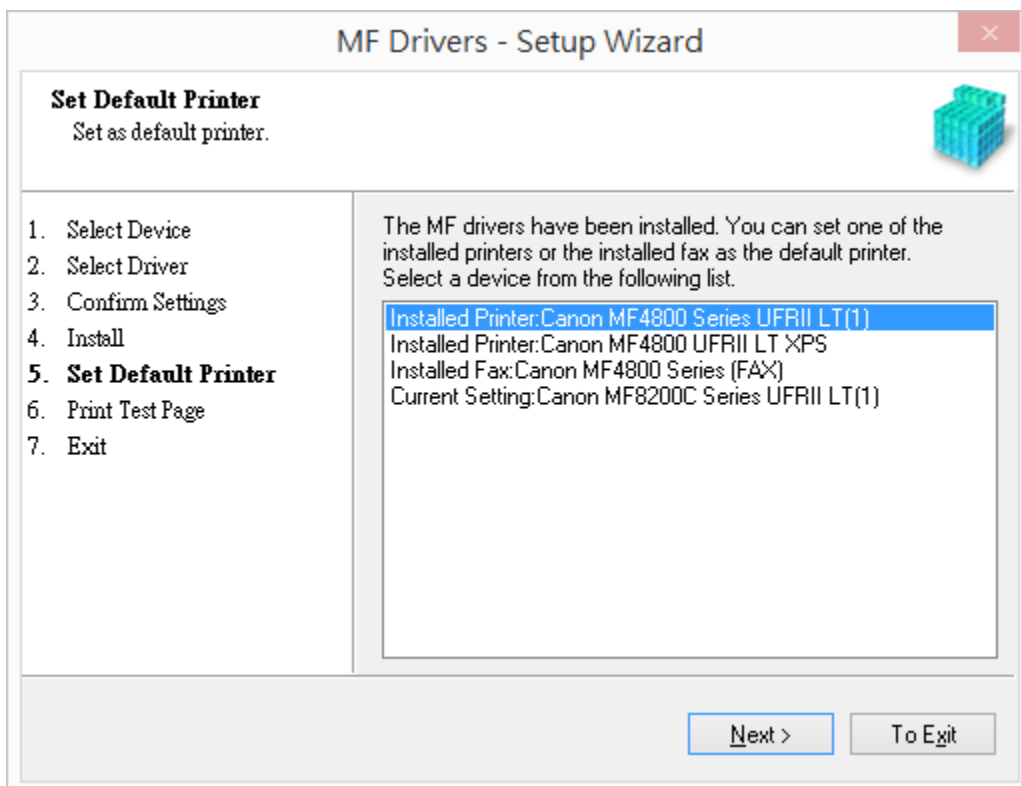
12. 按「Start」



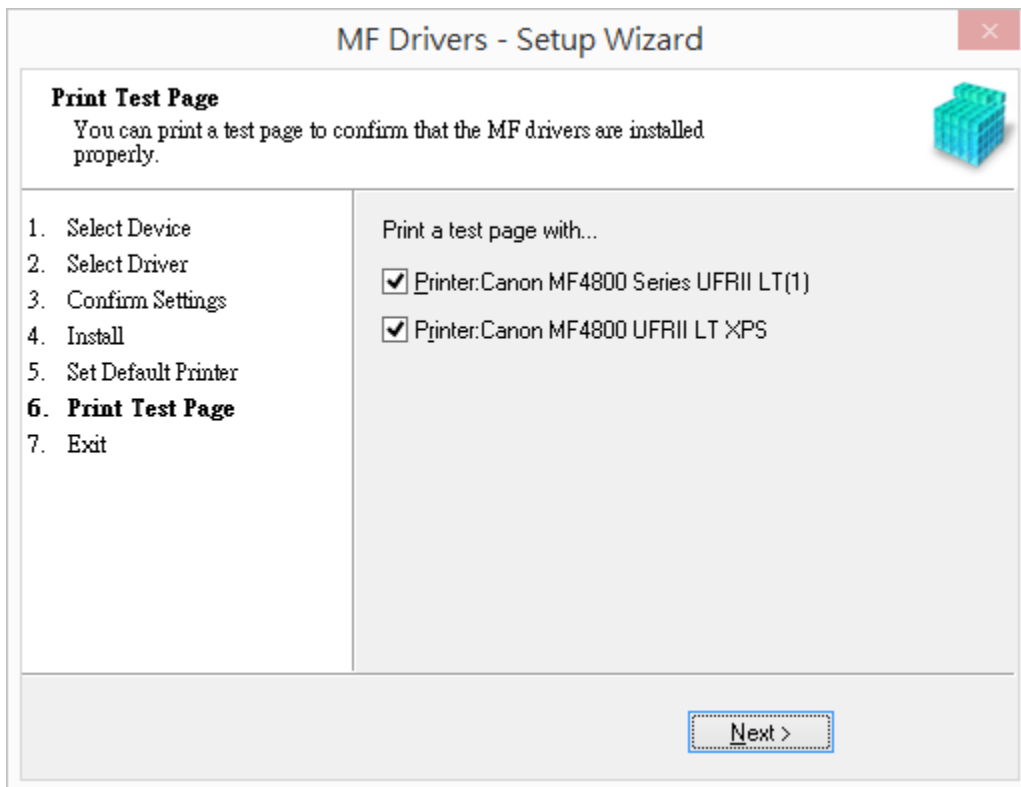
13. 安裝進行中



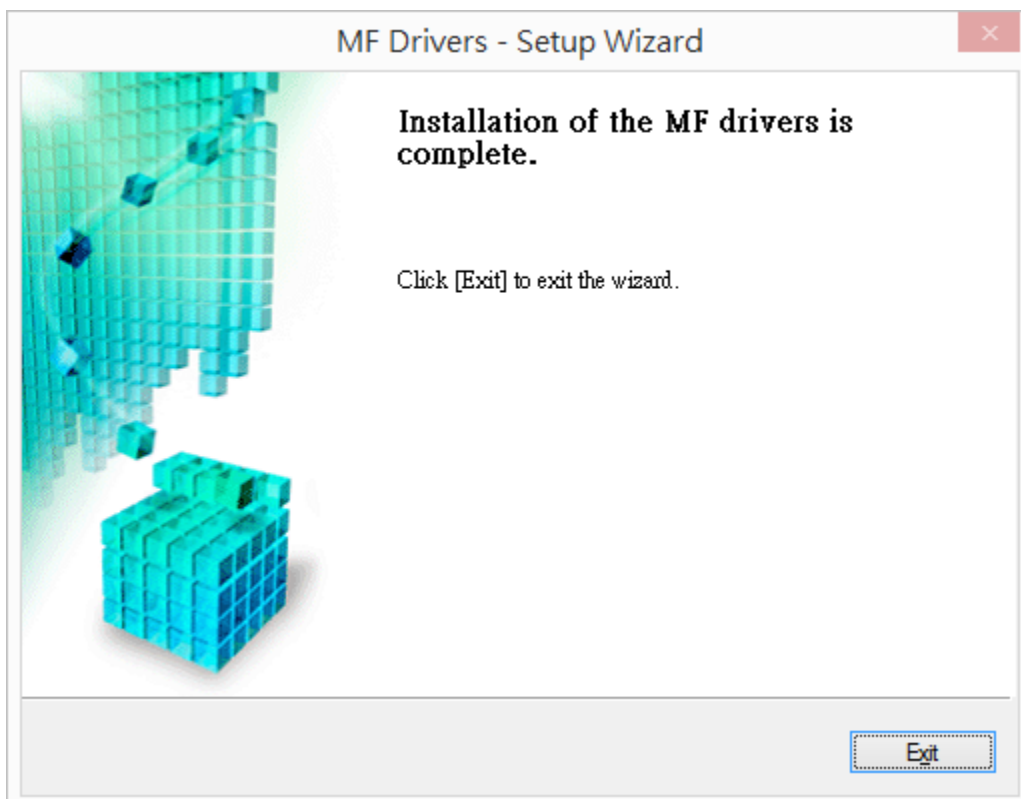
14. 按「Next」



15. 按「Next」



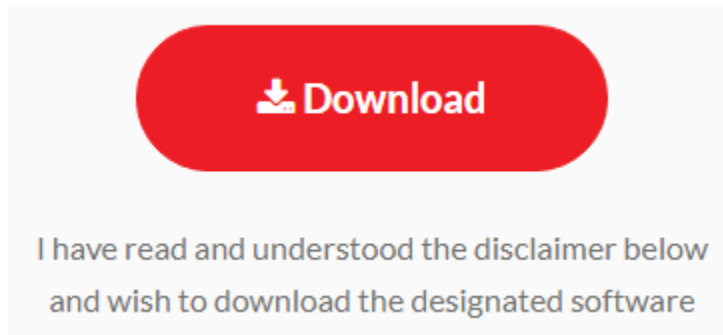
16. 按「Next」



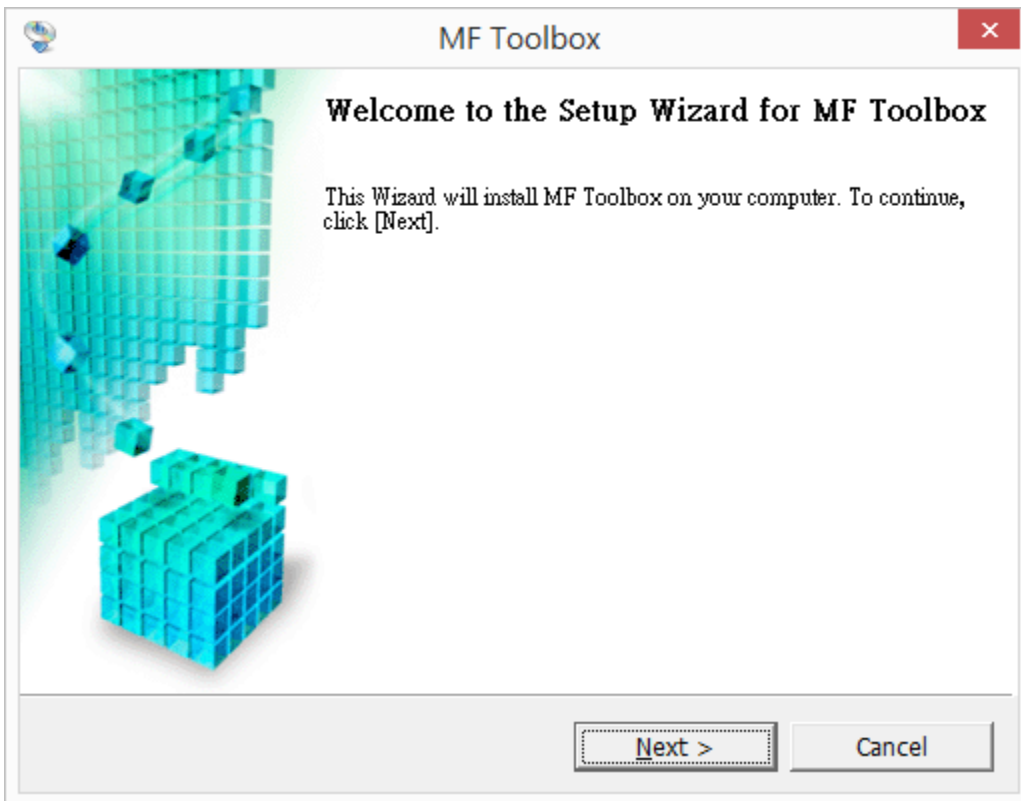
17. 點擊以下連結下載有關之軟件程式
[Windows 32bit & 64bit] Tool Box Ver.4.9.1.1.mf17
<https://hk.canon/en/support/0200155904/15>

下載及安裝步驟

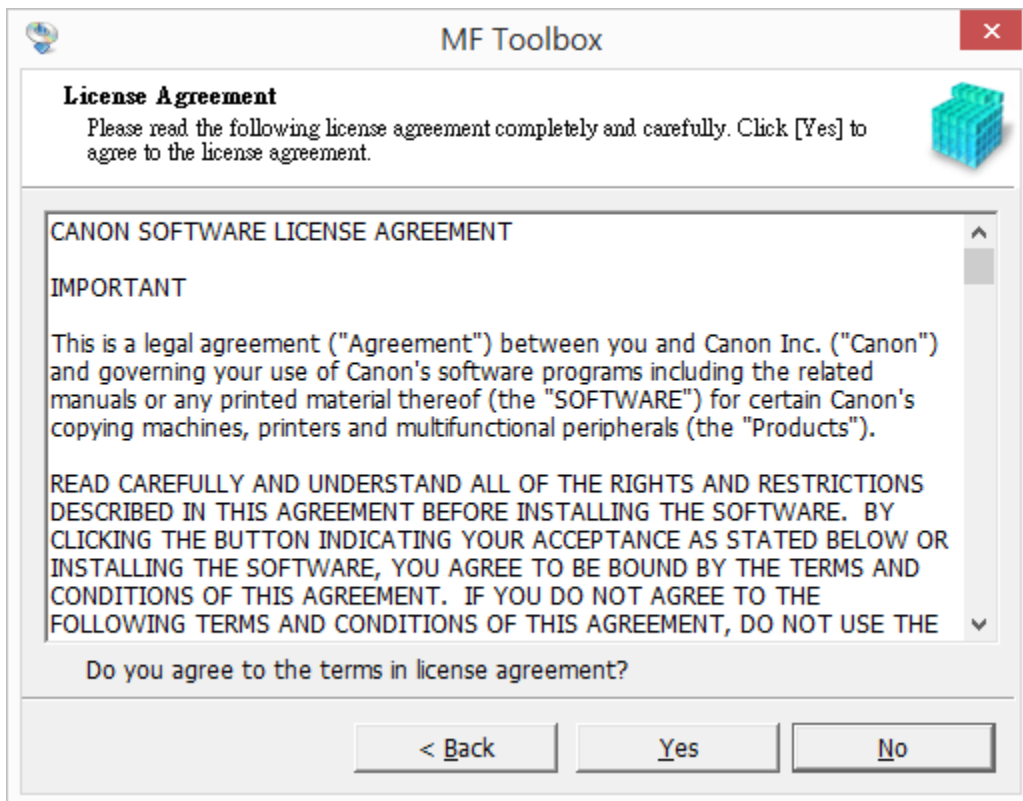
按一下「Download」。下載完成後開啟該檔案安裝



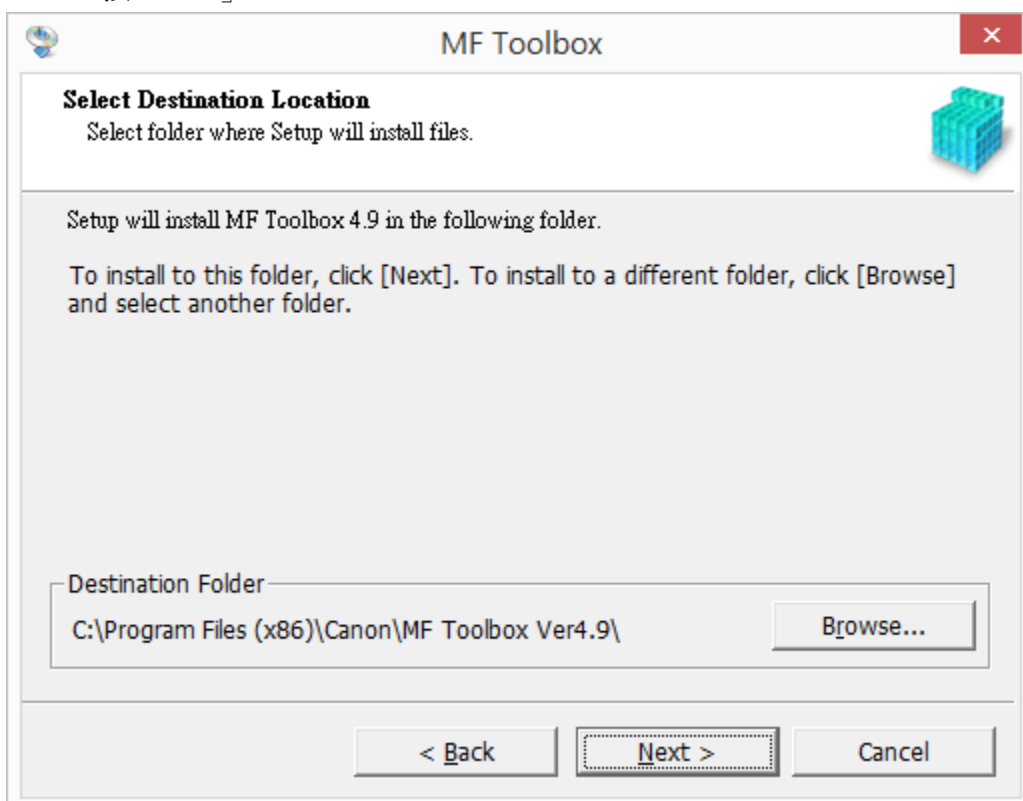
18. 按「Next」



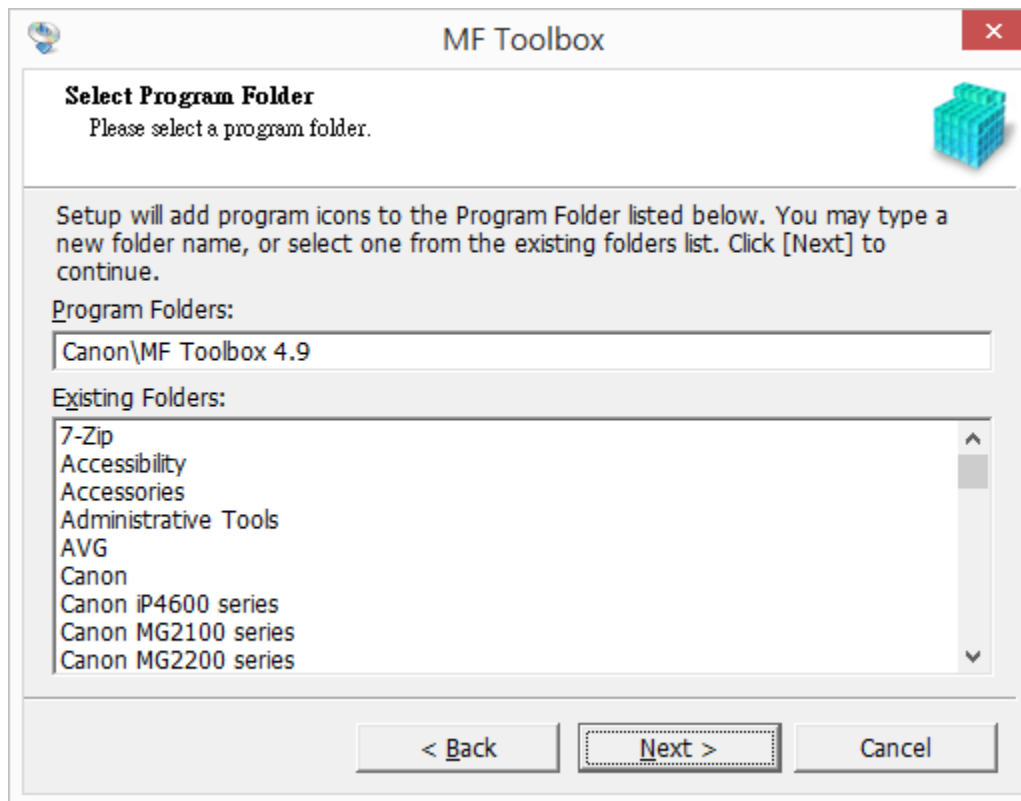
19. 按「Yes」



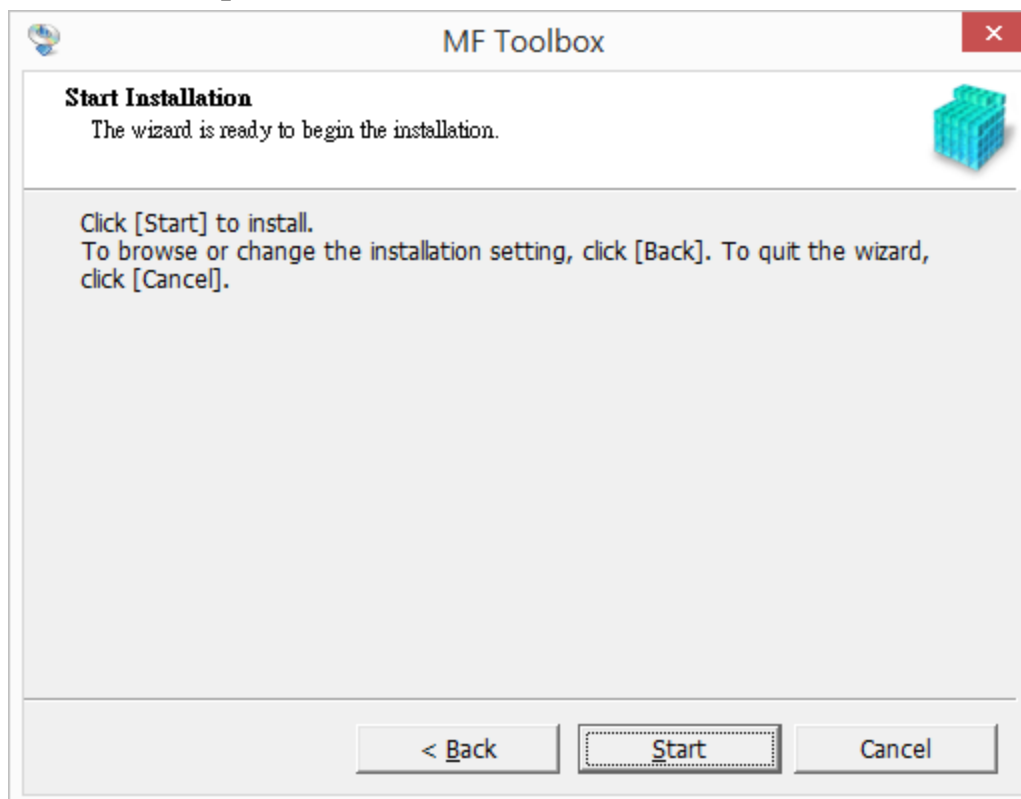
20. 按「Next」



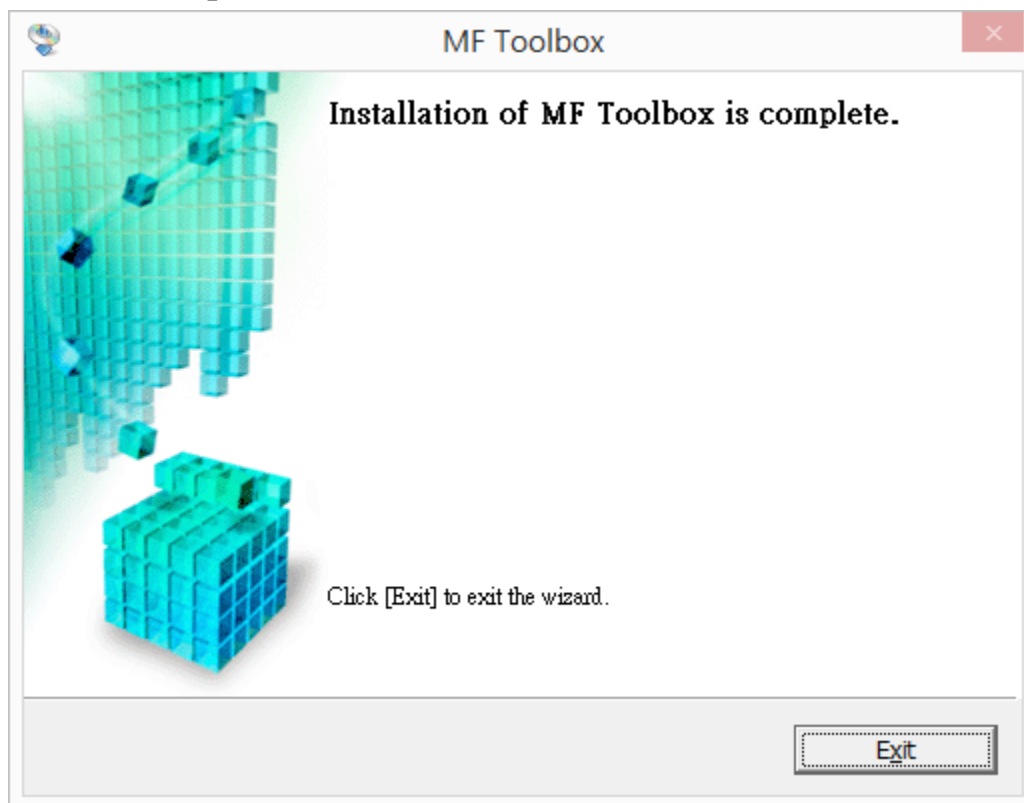
21. 按「Next」



22. 按「Start」



23. 按「Exit」



-完-