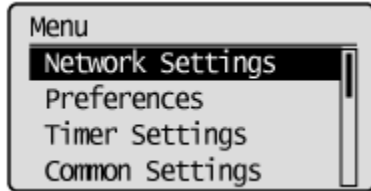


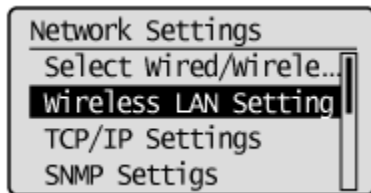
MF4890dw 安裝 Win 8.1 透過無線 LAN 連線連接印表機之驅動程式步驟

網路設定教學:

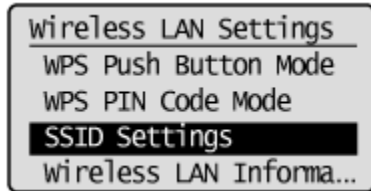
1. 按「功能表 (Menu)」
2. 選擇「網路設定 (Network Settings)」，按「OK」



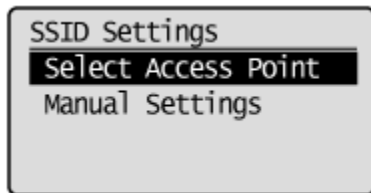
3. 選擇「無線區域網路設定 (Wireless LAN Setting)」，按「OK」



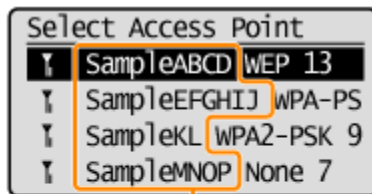
4. 選擇「SSID 設定 (SSID Settings)」，按「OK」



5. 選擇「選擇存取點 (Select Access Point)」，按「OK」



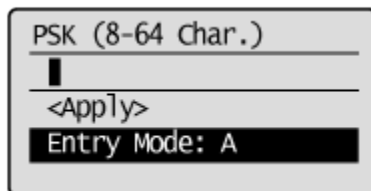
6. 選擇 WIFI 網路，按「OK」



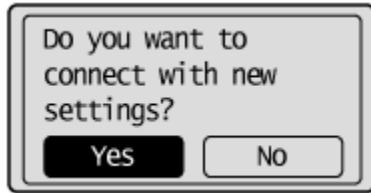
SSID

SSID is displayed in front of
"WEP" "WPA" "None".

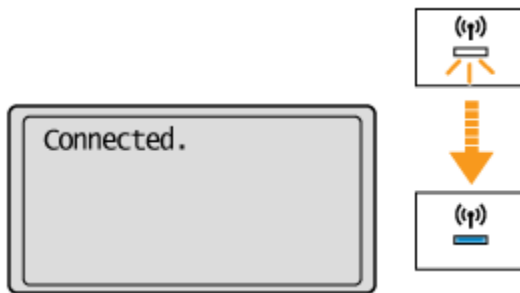
7. 用數字鍵盤輸入 WIFI 密碼後選擇「套用 (Apply)」，按「OK」



- 畫面出現「是否使用新設定連線」，選擇「是」，按「OK」



- 當畫面出現「已連線 (Connected)」及 WIFI 顯示燈亮起代表成功接駁。



完成後請點擊以下連結下載有關之驅動程式

用於 32 位元

[Windows 32bit] imageCLASS MF4890dw/MF4870dn MFDDrivers (UFR II / FAX / ScanGear)

<https://hk.canon/en/support/0100444901/6>

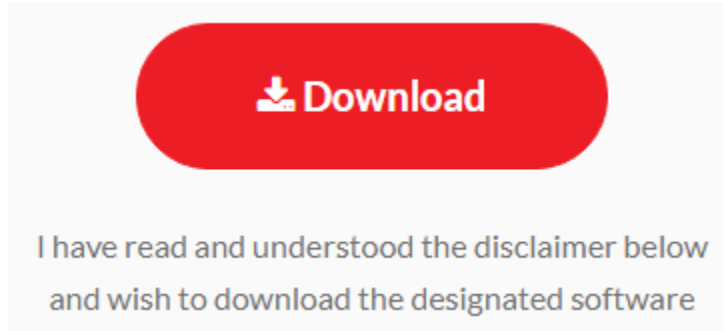
用於 64 位元

[Windows 64bit] imageCLASS MF4890dw/MF4870dn MFDDrivers (UFR II / FAX / ScanGear)

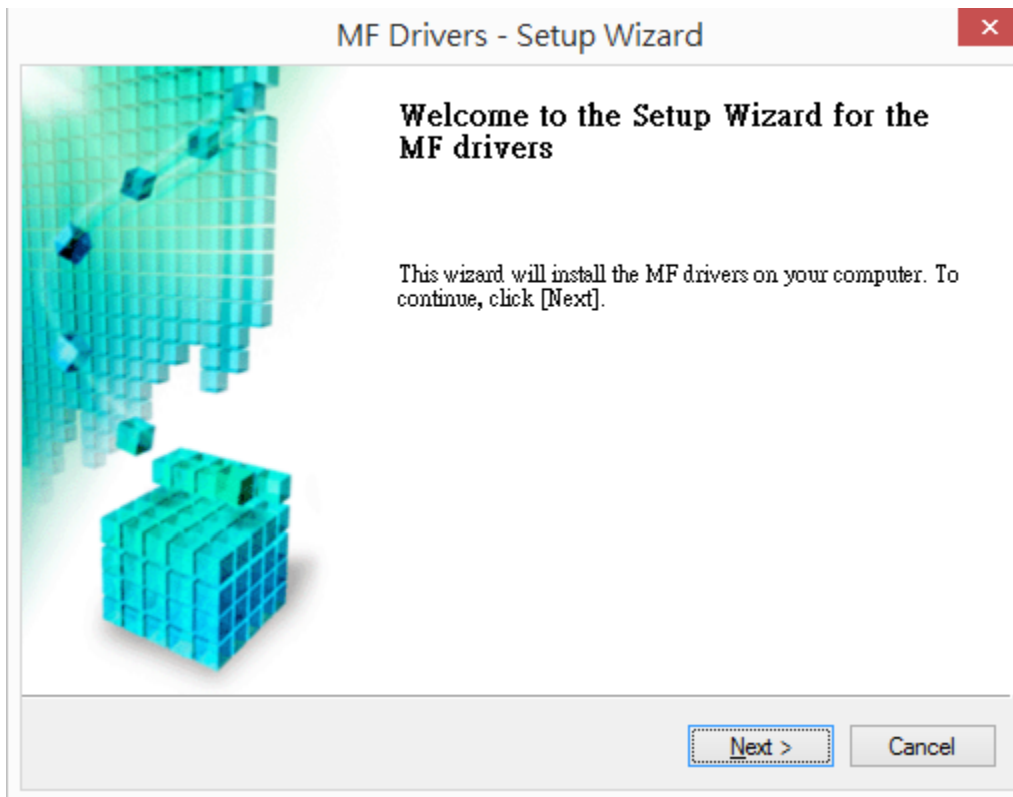
<https://hk.canon/en/support/0100445001/8>

下載及安裝步驟

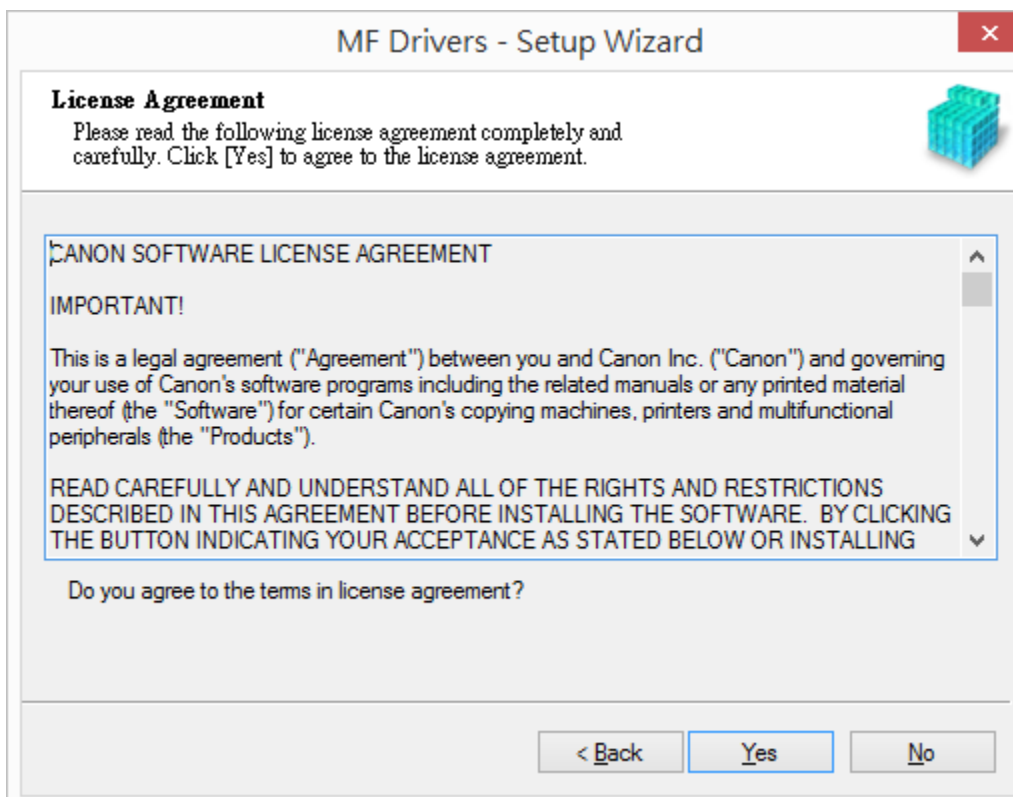
- 按一下「Download」。下載完成後開啟該檔案安裝



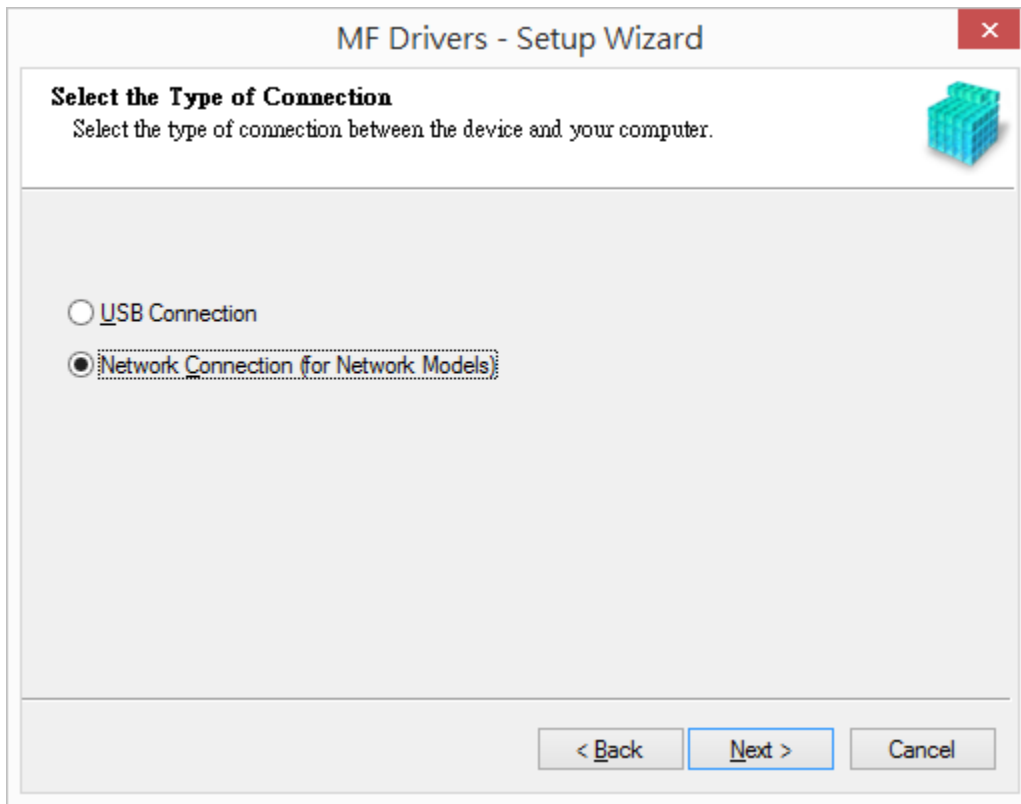
2. 按「Next」



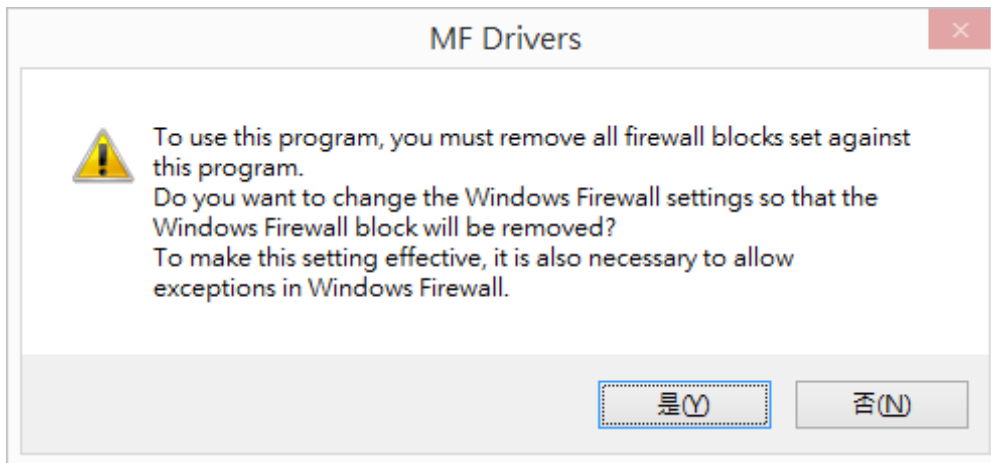
3. 按「Yes」



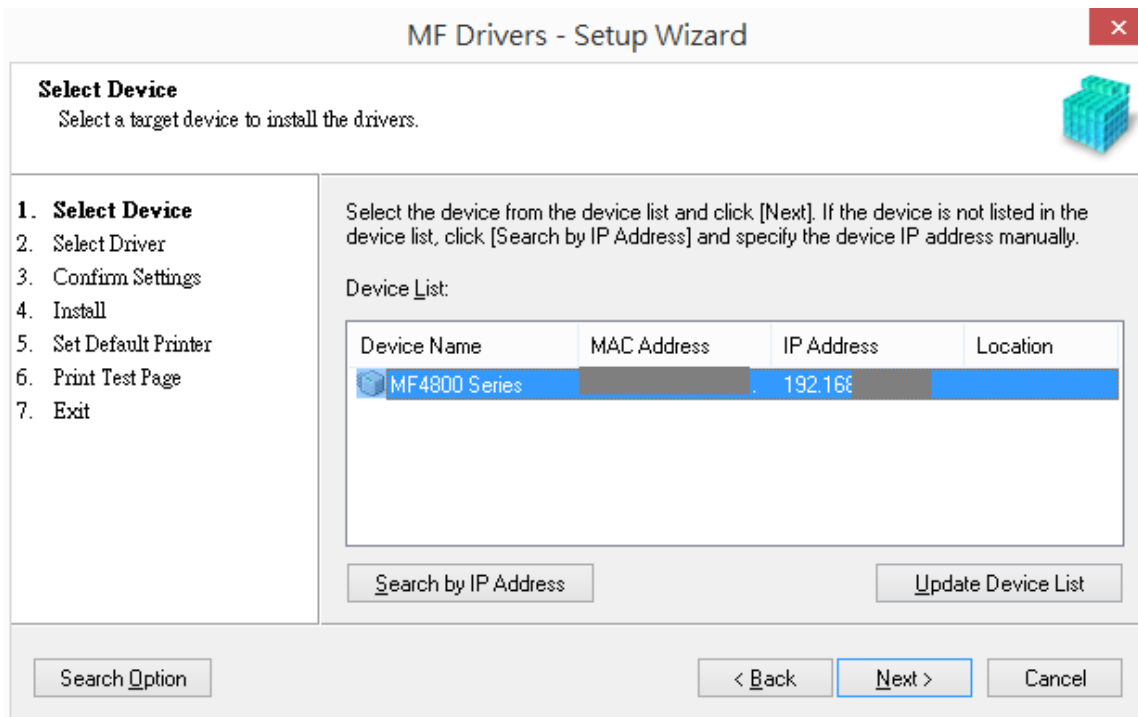
4. 選擇「Network Connection (for Network Models)」



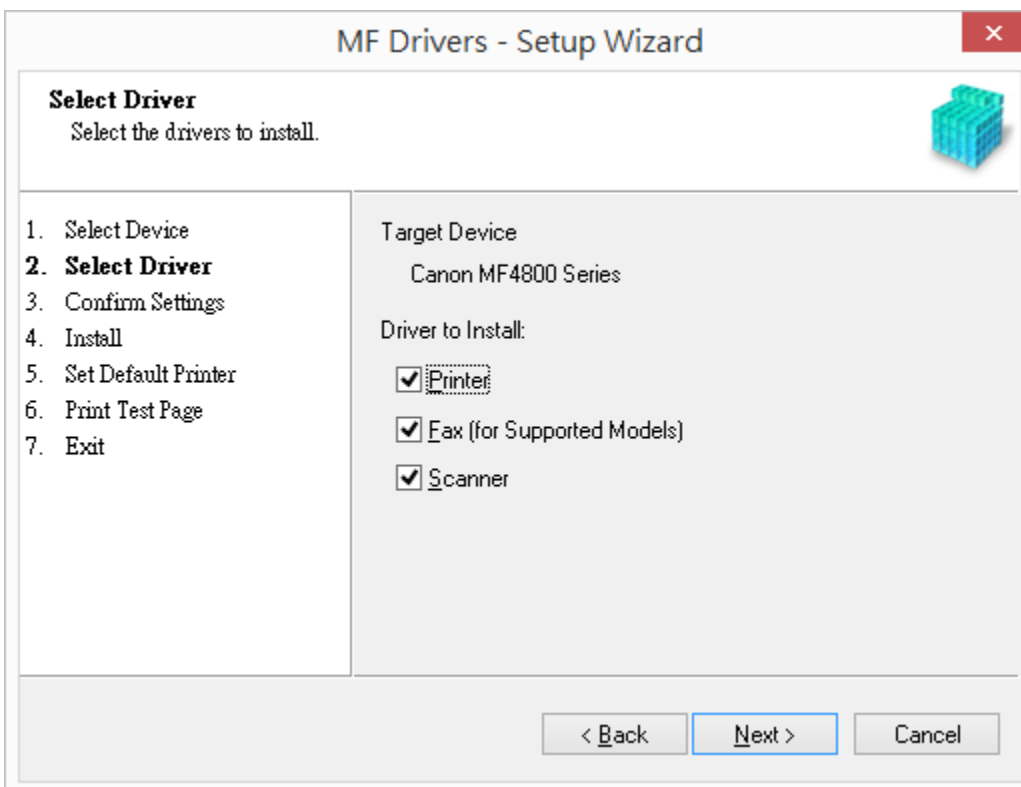
5. 確定已移除所有防火牆對此程式的封鎖設定



6. 按「Next」



7. 按「Next」



8. 按「Next」

The screenshot shows the 'MF Drivers - Setup Wizard' window. The title bar reads 'MF Drivers - Setup Wizard' with a close button. The main heading is 'Select Driver' with the instruction 'Select the drivers to install.' and a printer icon. On the left, a list of steps is shown: 1. Select Device, 2. **Select Driver**, 3. Confirm Settings, 4. Install, 5. Set Default Printer, 6. Print Test Page, 7. Exit. The right pane shows 'Target Device' as 'Canon MF4800 Series' and 'Printer Drivers to Install:' with two checked options: 'UFR II LT Printer Driver' and 'UFR II LT XPS Printer Driver'. At the bottom are buttons for '< Back', 'Next >', and 'Cancel'.

9. 按「Next」

The screenshot shows the 'MF Drivers - Setup Wizard' window. The title bar reads 'MF Drivers - Setup Wizard' with a close button. The main heading is 'Confirm Settings' with the instruction 'Confirm the following setting details.' and a printer icon. On the left, a list of steps is shown: 1. Select Device, 2. Select Driver, 3. **Confirm Settings**, 4. Install, 5. Set Default Printer, 6. Print Test Page, 7. Exit. The right pane contains text: 'You can change the printer name. If you specify this printer as a shared printer, you can specify the shared printer name and set an additional driver (alternate driver). Confirm the settings, and then click [Next].' Below this is the 'Printer' section with 'Port: CNMFNP [redacted]', 'Driver: Canon MF4800 Series UFR II LT', and 'Printer Name: Canon MF4800 Series UFR II LT(1)'. There is a checkbox for 'Use as Shared Printer' which is unchecked, and a 'Shared Name:' field below it. At the bottom right, it shows 'Current Device: 1' and 'Number of Devices to Set: 3'. At the bottom are buttons for '< Back', 'Next >', and 'Cancel'.

10. 按「Next」

MF Drivers - Setup Wizard

Confirm Settings
Confirm the following setting details.

- Select Device
- Select Driver
- 3. Confirm Settings**
- Install
- Set Default Printer
- Print Test Page
- Exit

You can change the printer name. If you specify this printer as a shared printer, you can specify the shared printer name and set an additional driver (alternate driver). Confirm the settings, and then click [Next].

Printer

Port: CNMFNP [REDACTED]
Driver: Canon MF4800 UFR II LT XPS
Printer Name: Canon MF4800 UFR II LT XPS

Use as Shared Printer

Shared Name: [REDACTED]

Current Device: 2
Number of Devices to Set: 3

< Back Next > Cancel

11. 按「Next」

MF Drivers - Setup Wizard

Confirm Settings
Confirm the following setting details.

- Select Device
- Select Driver
- 3. Confirm Settings**
- Install
- Set Default Printer
- Print Test Page
- Exit

You can change the fax name. If you specify this fax as a shared fax, you can specify the shared fax name and set an additional driver (alternate driver). Confirm the settings, and then click [Next].

Fax

Port: CNMFNP [REDACTED]
Driver: Canon MF4800 Series (FAX)
Fax Name: Canon MF4800 Series (FAX)

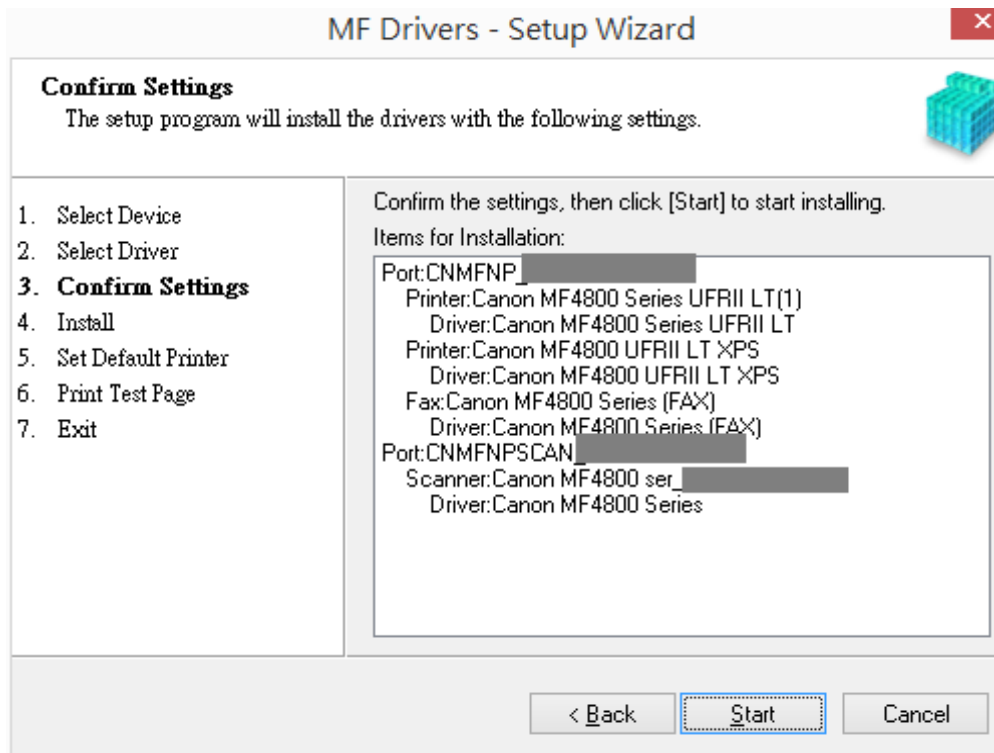
Use as Shared Fax

Shared Name: [REDACTED]

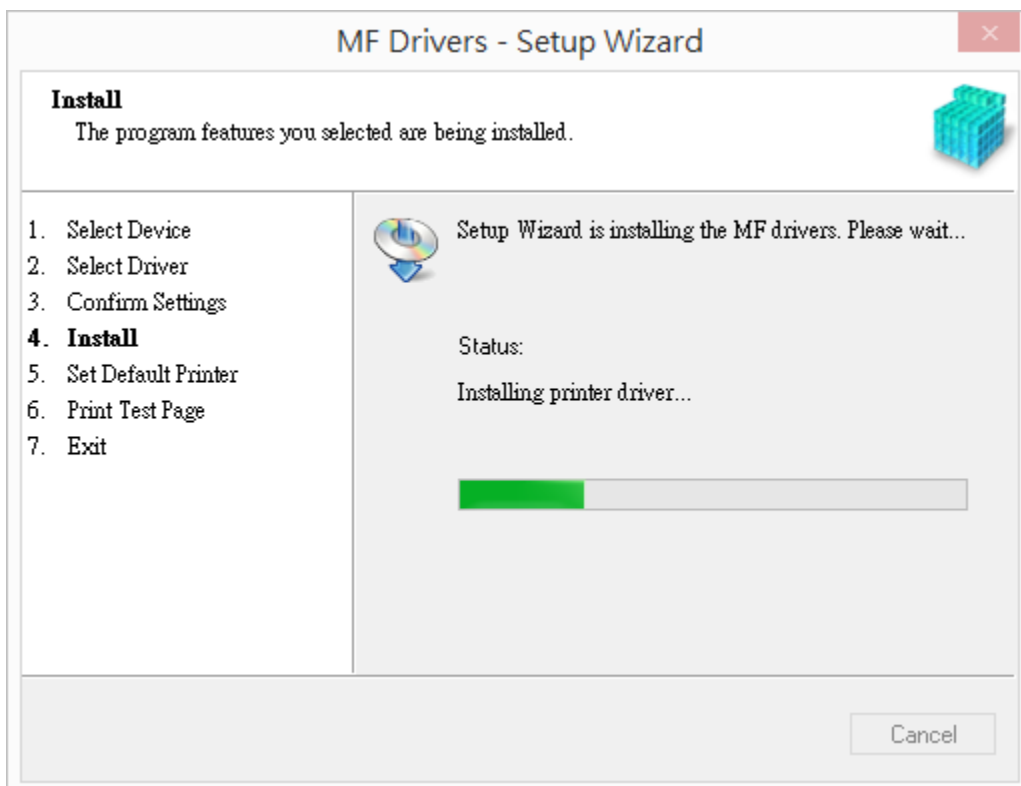
Current Device: 3
Number of Devices to Set: 3

< Back Next > Cancel

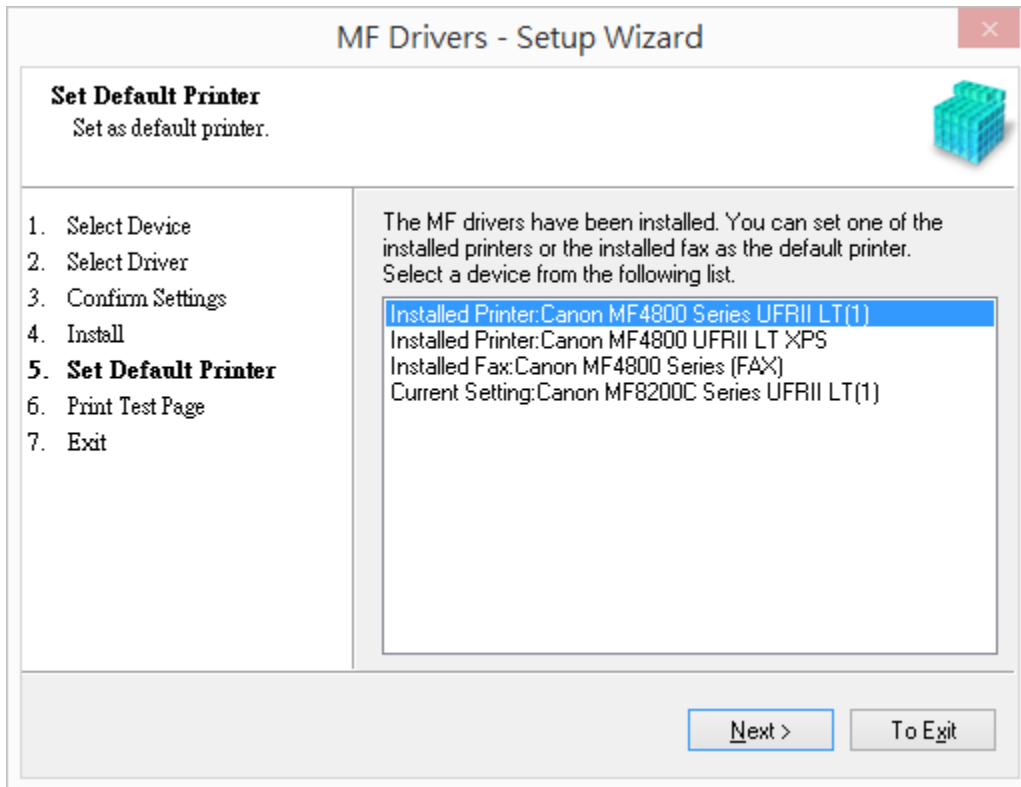
12. 按「Start」



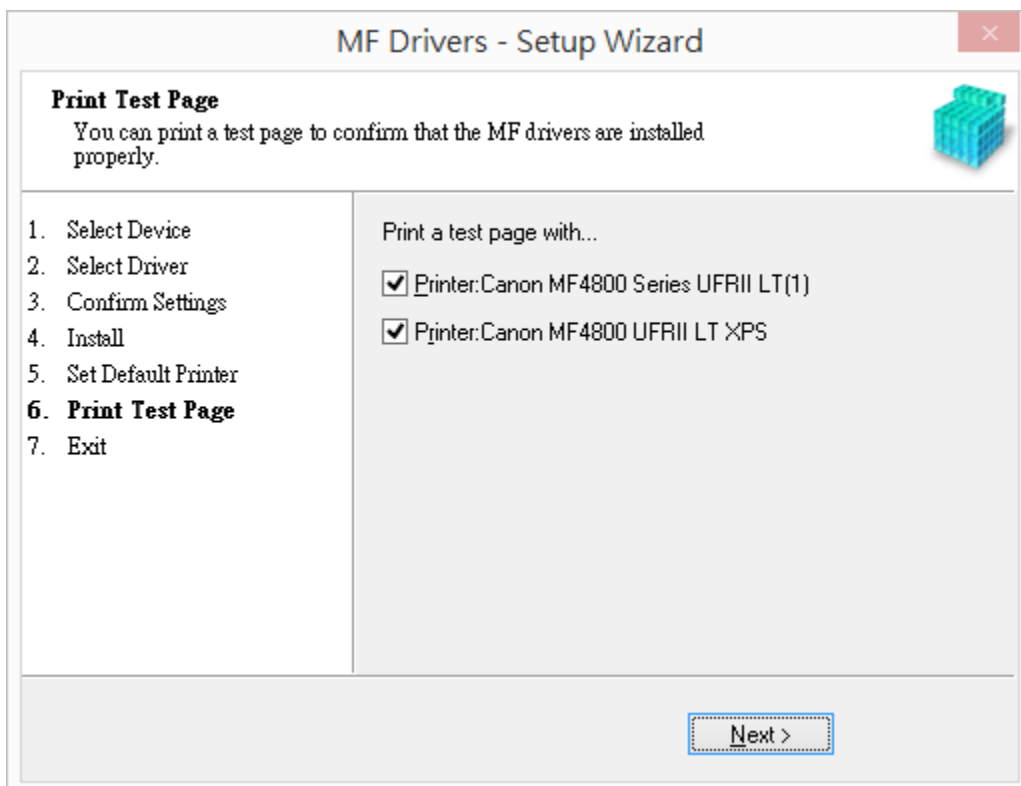
13. 安裝進行中



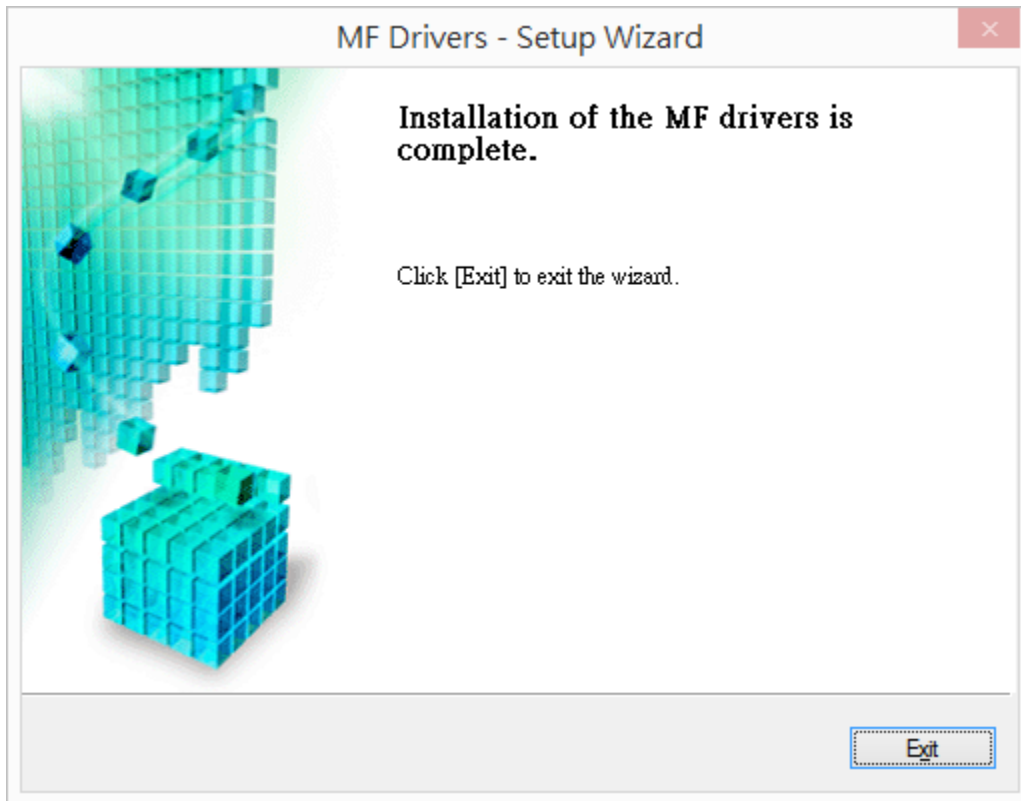
14. 按「Next」



15. 按「Next」



16. 按「Next」



17. 點擊以下連結下載有關之軟件程式
[Windows 32bit & 64bit] Tool Box Ver.4.9.1.1.mf17
<https://hk.canon/en/support/0200155904/15>

下載及安裝步驟

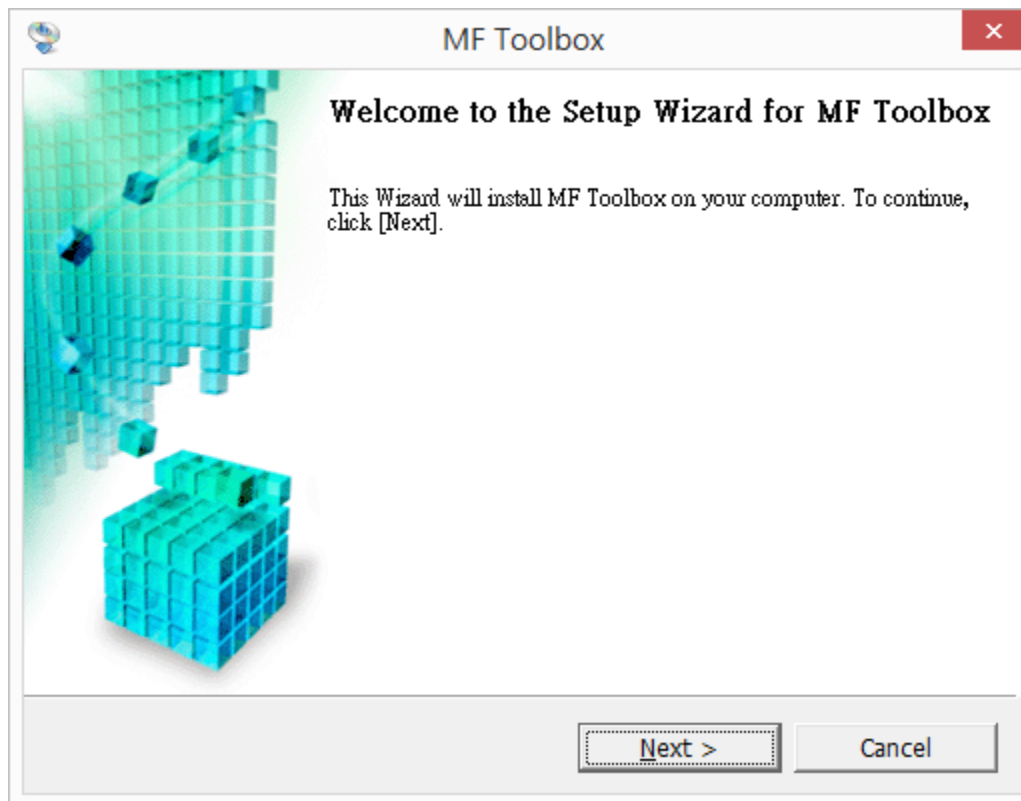
按一下「Download」。下載完成後開啟該檔案安裝

A red, rounded rectangular button with a white download icon (a square with a downward arrow) and the word "Download" in white text.

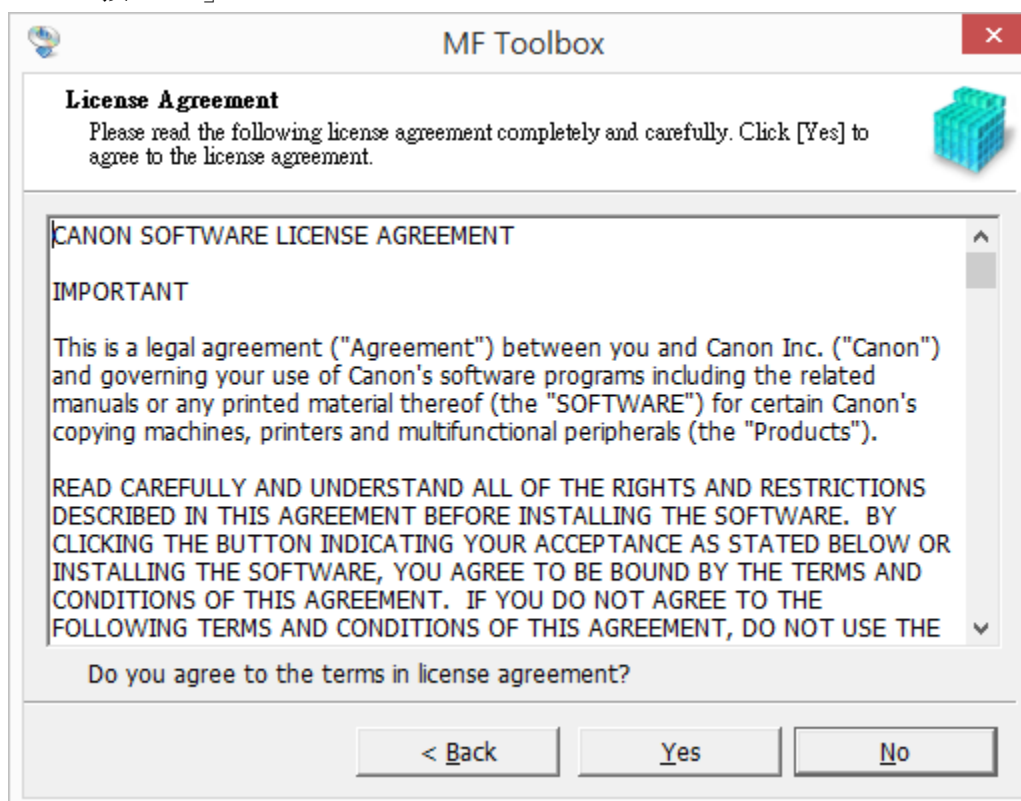
Download

I have read and understood the disclaimer below
and wish to download the designated software

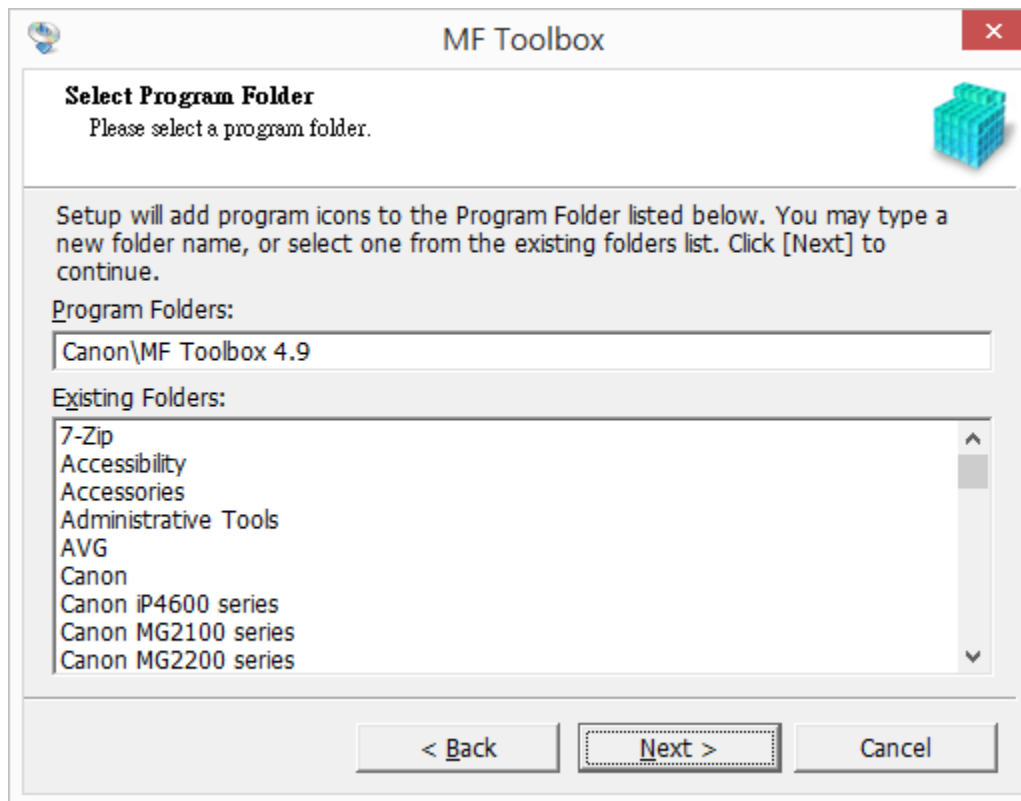
18. 按「Next」



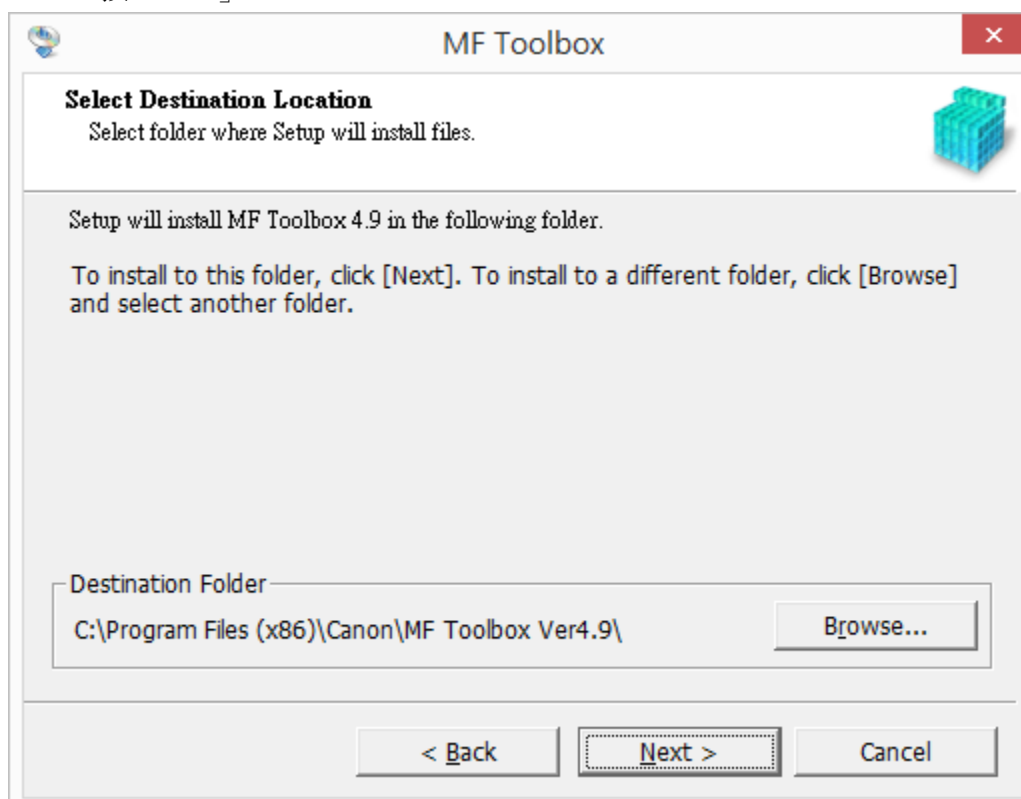
19. 按「Yes」



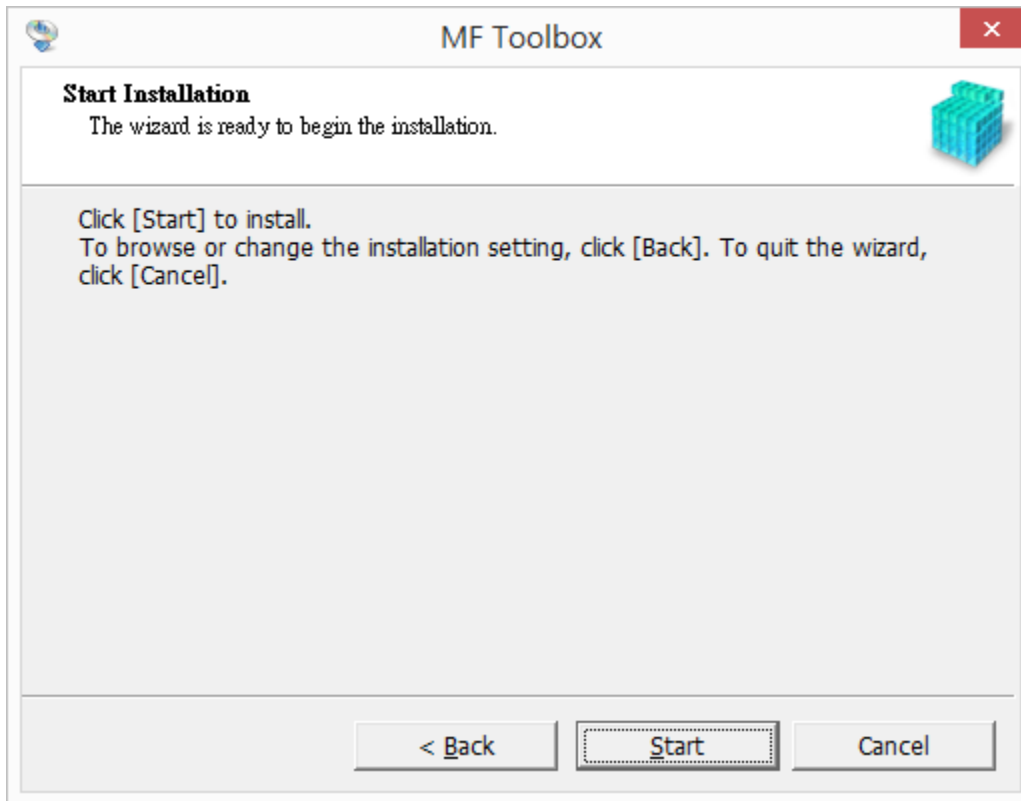
20. 按「Next」



21. 按「Next」



22. 按「Start」



23. 按「Exit」

