

MF4890dw 安裝 Win 8.1 透過 USB 連線連接印表機之驅動程式步驟

****注意: 安裝驅動程式前請勿接駁 USB 線，以免系統發生錯誤****

點擊以下連結下載有關之驅動程式

用於 32 位元

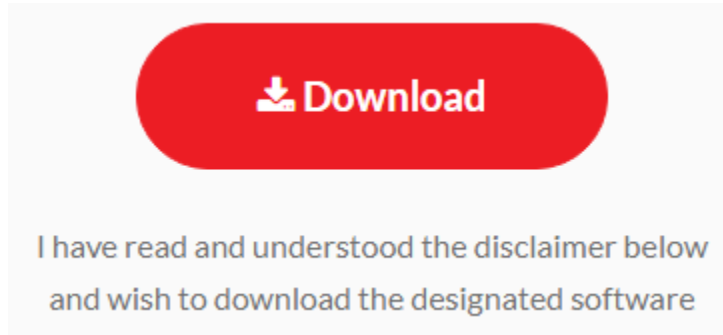
[Windows 32bit] imageCLASS MF4890dw/MF4870dn MFDivers (UFR II / FAX / ScanGear)
<https://hk.canon/en/support/0100444901/6>

用於 64 位元

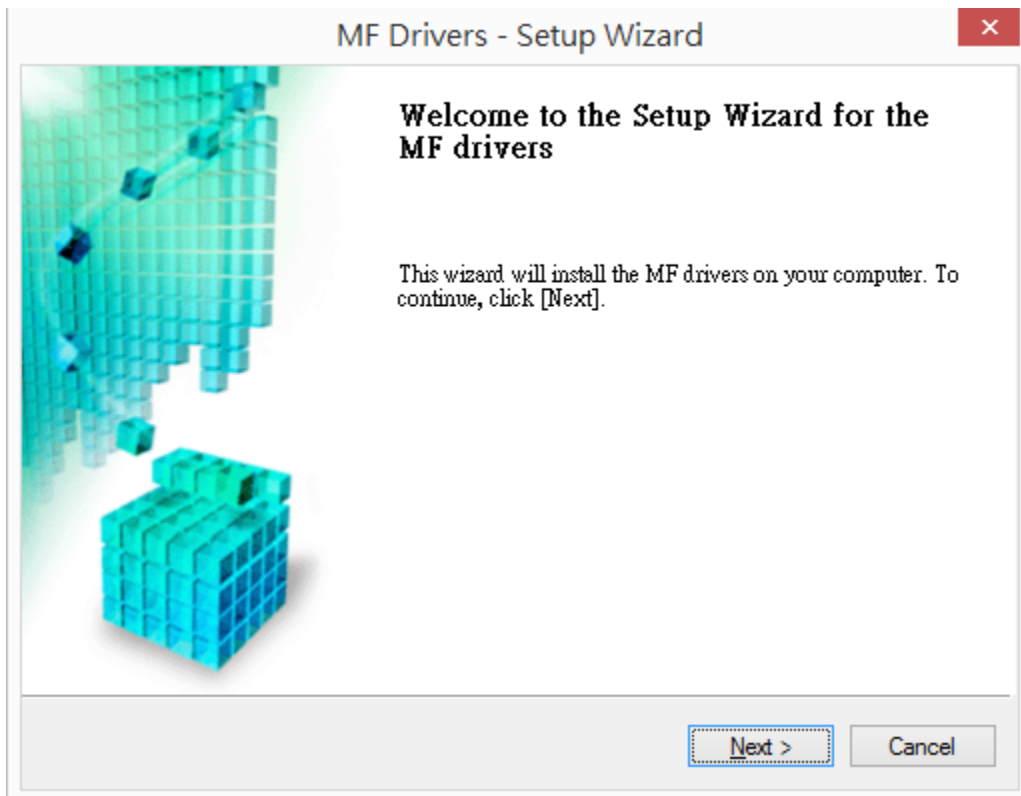
[Windows 64bit] imageCLASS MF4890dw/MF4870dn MFDivers (UFR II / FAX / ScanGear)
<https://hk.canon/en/support/0100445001/8>

下載及安裝步驟

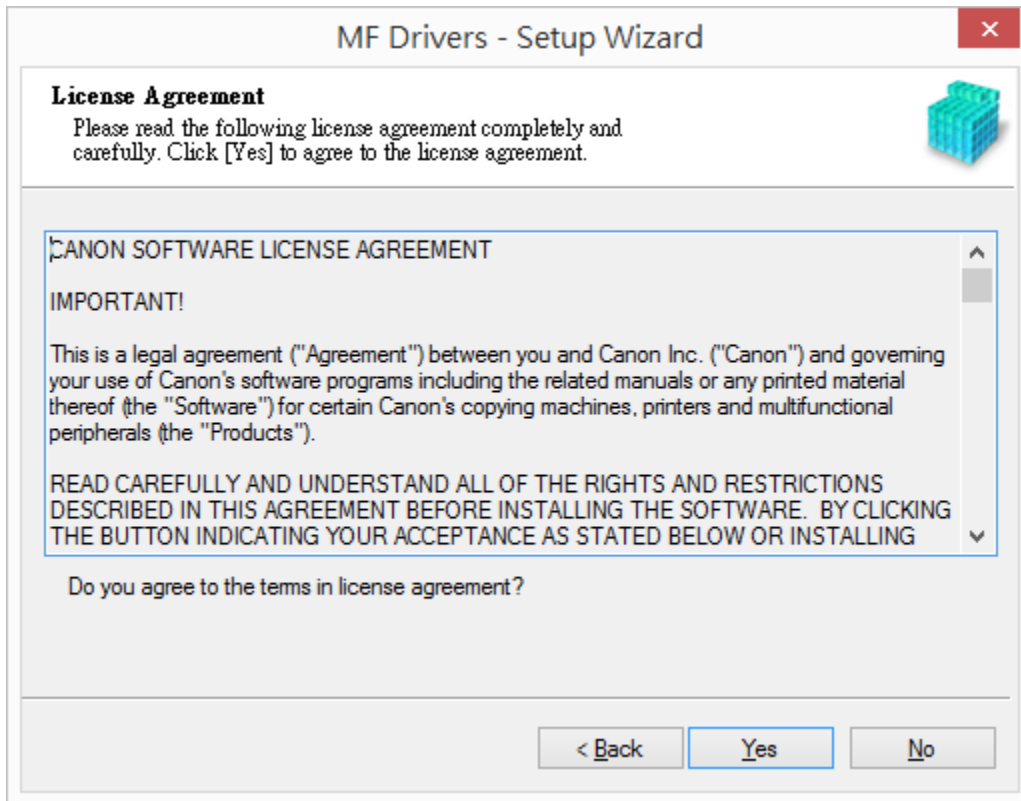
1. 按一下「Download」。下載完成後開啟該檔案安裝



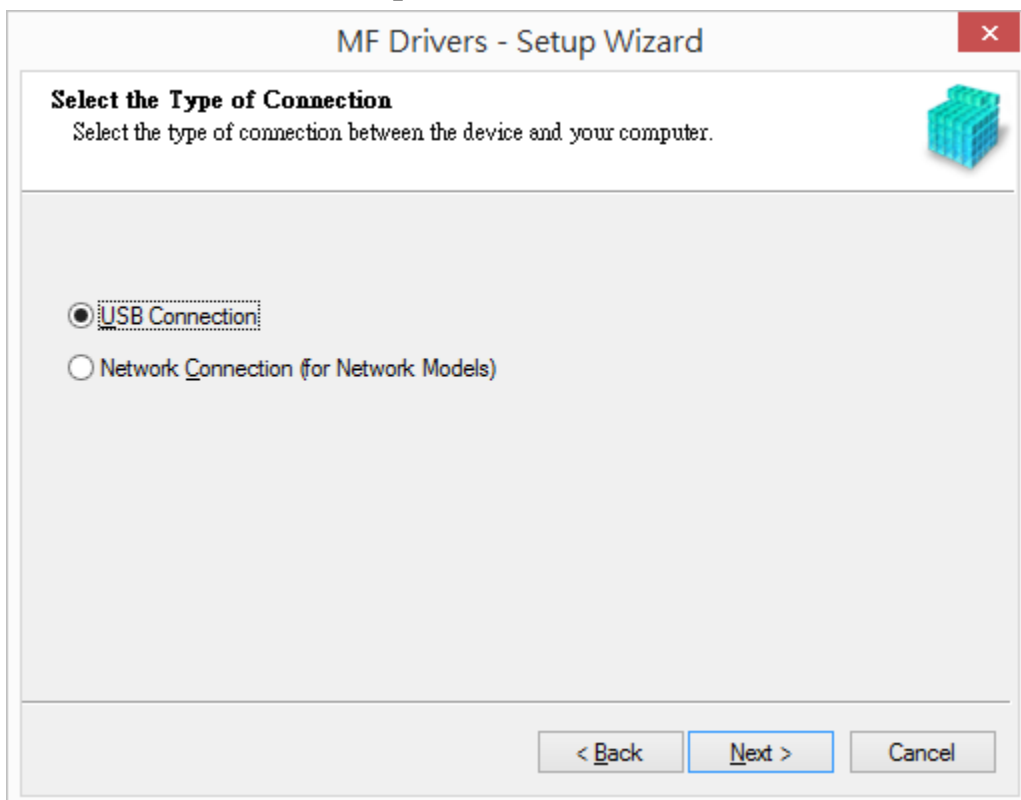
2. 按「Next」



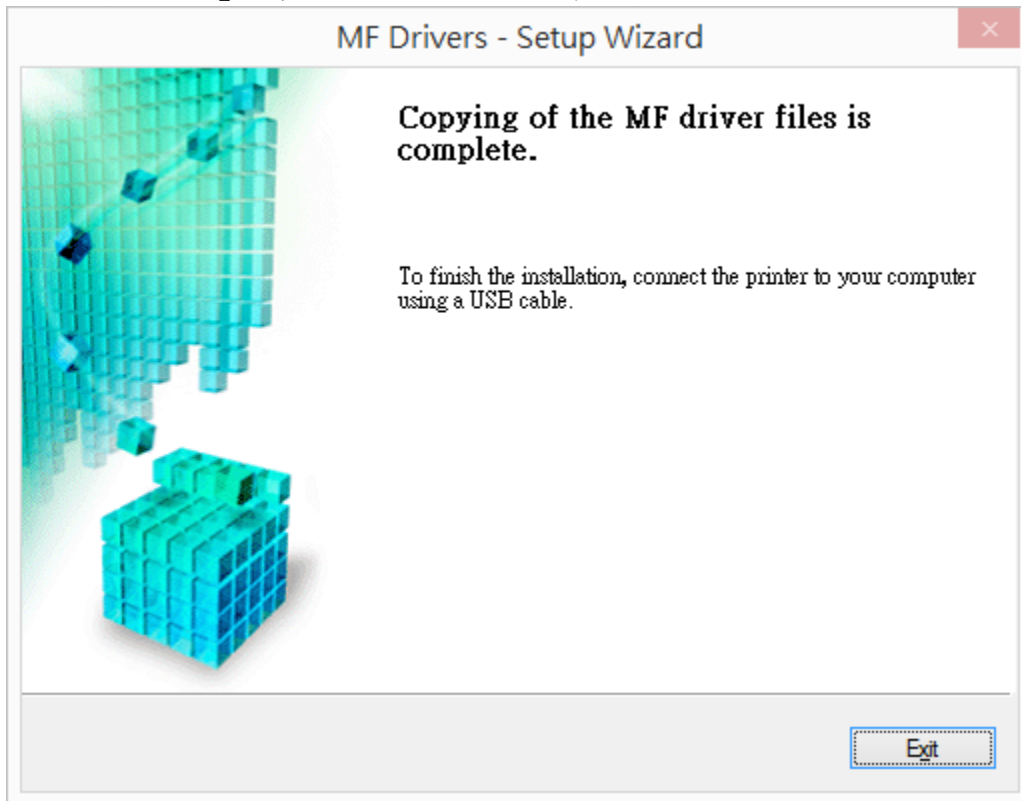
3. 按「Yes」



4. 選擇「USB Connection」

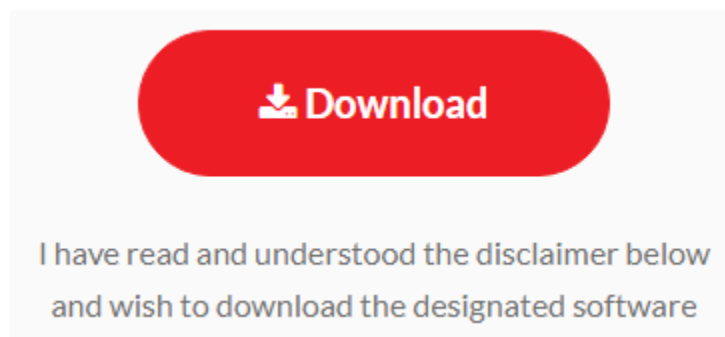


5. 按「Exit」並使用 USB 纜線將印表機連接到電腦

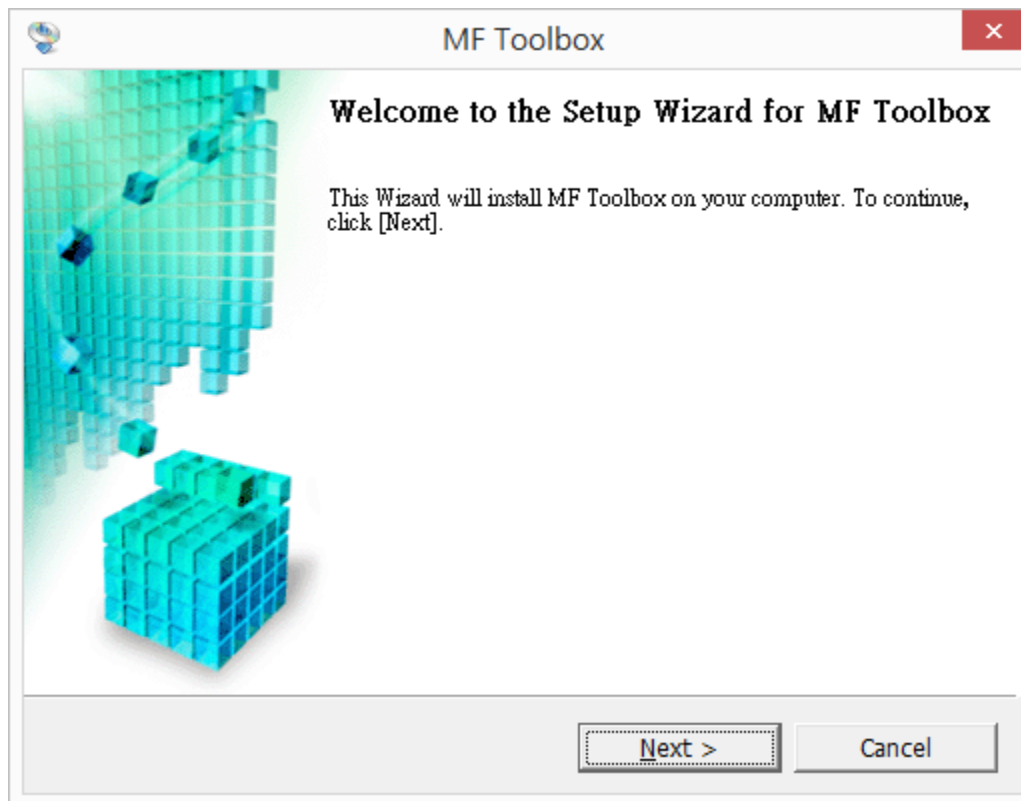


6. 點擊以下連結下載有關之軟件程式
[Windows 32bit & 64bit] Tool Box Ver.4.9.1.1.mf17
<https://hk.canon/en/support/0200155904/15>

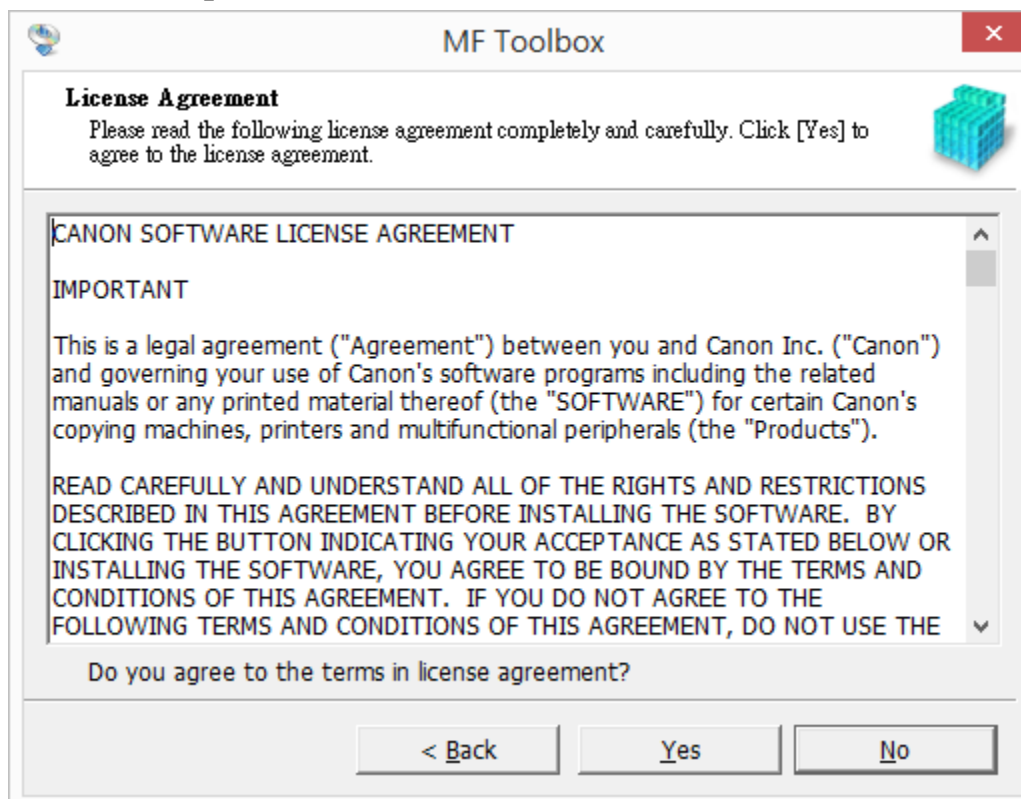
下載及安裝步驟
按一下「Download Now」。下載完成後開啟該檔案安裝



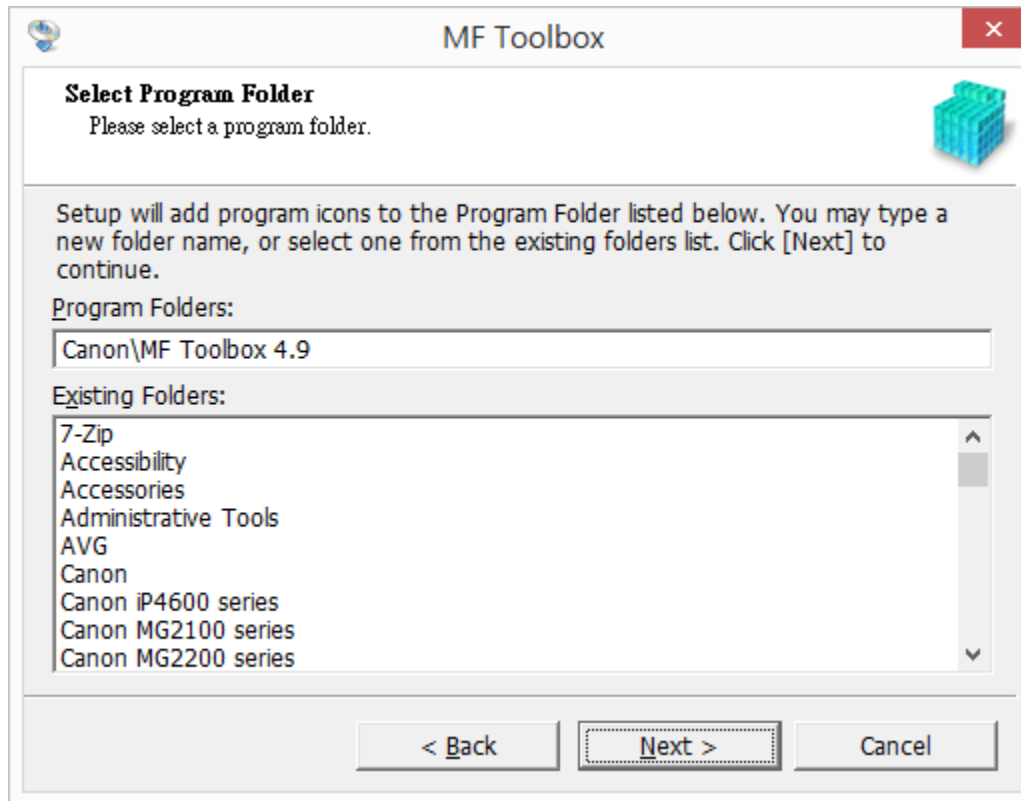
7. 按「Next」



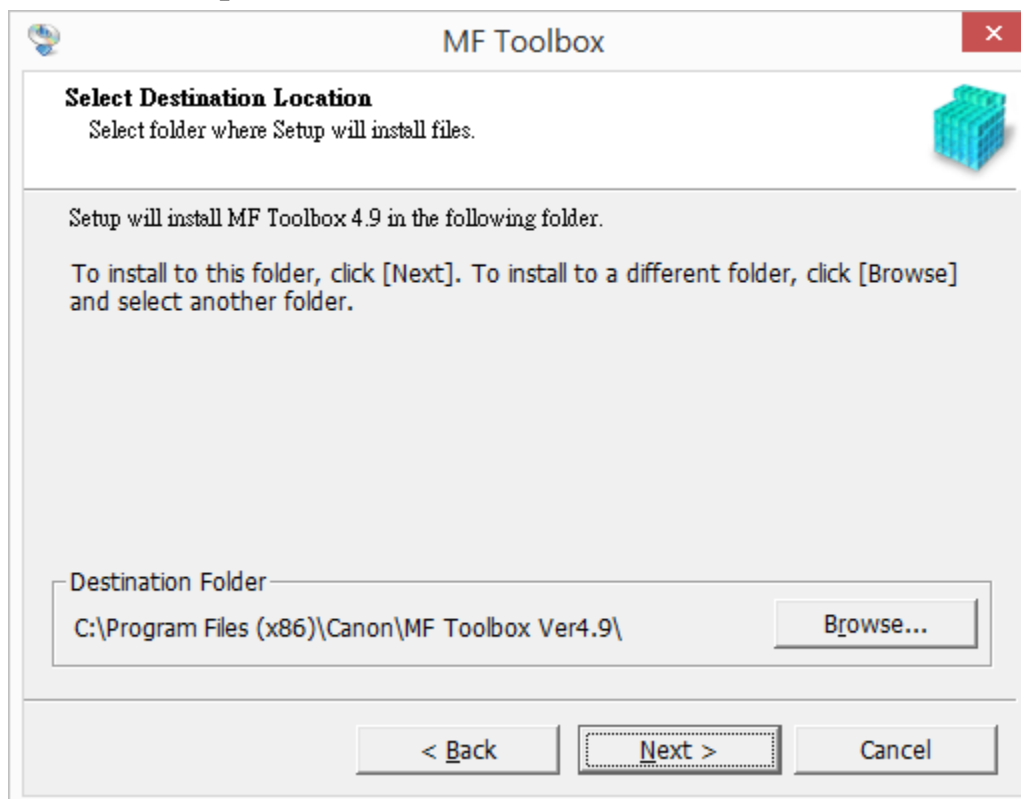
8. 按「Yes」



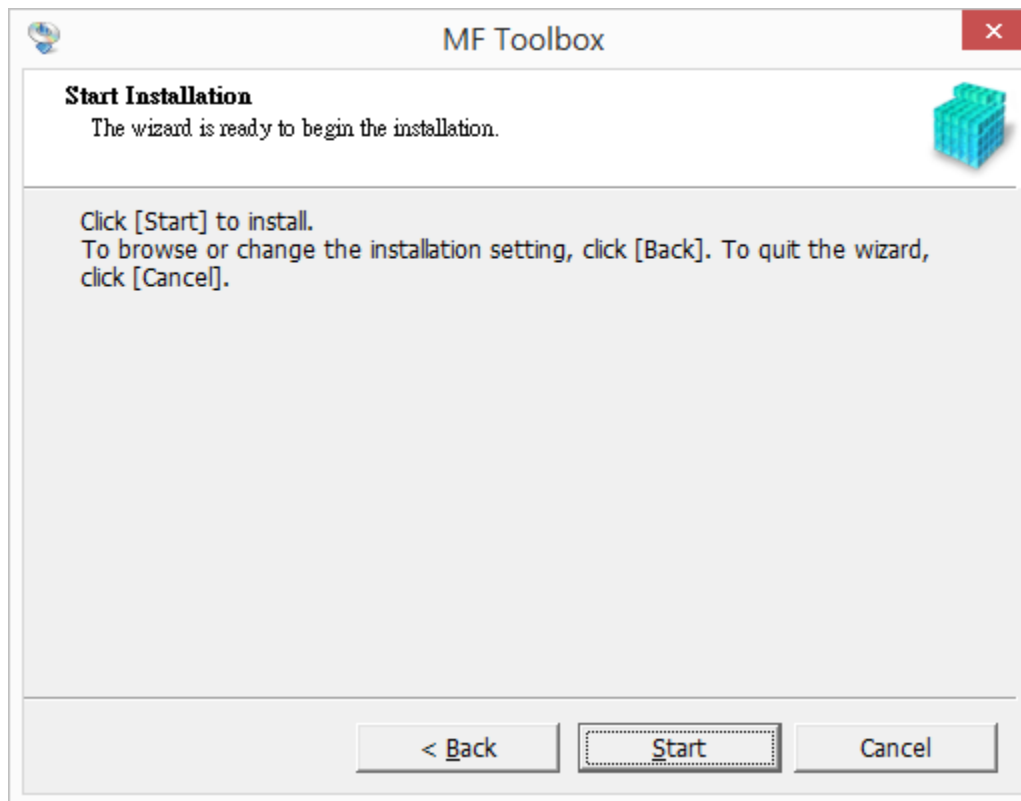
9. 按「Next」



10. 按「Next」



11. 按「Start」



12. 按「Exit」

