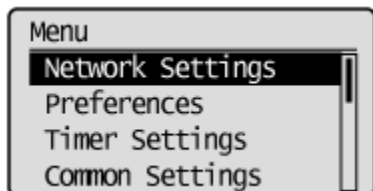


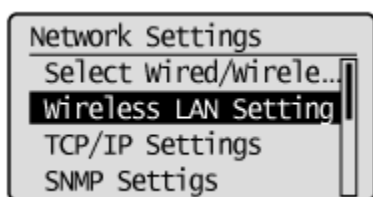
MF6180dw 在 Windows 8 透過 WIFI 連線連接印表機之驅動程式步驟

網路設定教學:

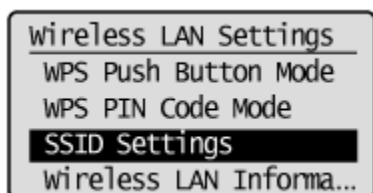
1. 按「功能表 (Menu)」
2. 選擇「網路設定 (Network Settings)」，按「OK」



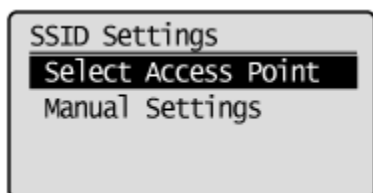
3. 選擇「無線區域網路設定 (Wireless LAN Setting)」，按「OK」



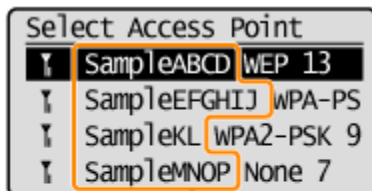
4. 選擇「SSID 設定 (SSID Settings)」，按「OK」



5. 選擇「選擇存取點 (Select Access Point)」，按「OK」



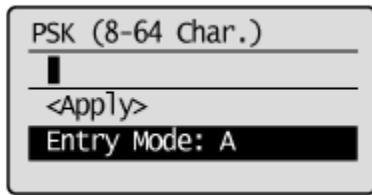
6. 選擇 WIFI 網路，按「OK」



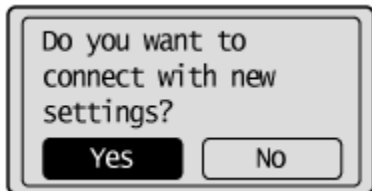
SSID

SSID is displayed in front of
"WEP" "WPA" "None".

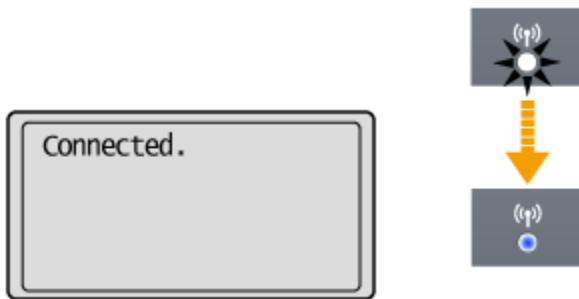
7. 用數字鍵盤輸入 WIFI 密碼後選擇「套用 (Apply)」，按「OK」



8. 畫面出現「是否使用新設定連線」，選擇「是」，按「OK」



9. 當畫面出現「已連線 (Connected)」及 WIFI 顯示燈亮起代表成功接駁。



10. 點擊以下連結下載有關之驅動程式

用於 32 位元

[Windows 32bit] imageCLASS MF6180dw MFDivers (UFR II / PCL / FAX / ScanGear)

https://hk.canon/zh_HK/support/0100802005/5

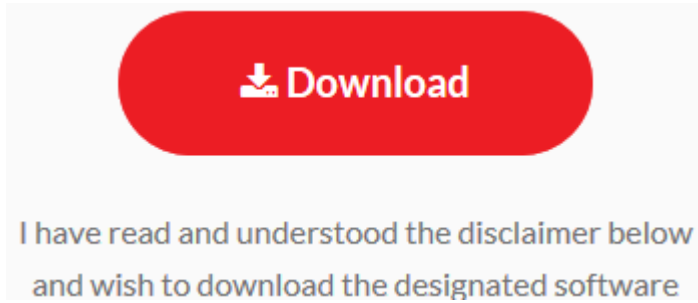
用於 64 位元

[Windows 64bit] imageCLASS MF6180dw MFDivers (UFR II / PCL / FAX / ScanGear)

https://hk.canon/zh_HK/support/0100802104/6

11. 下載及安裝步驟

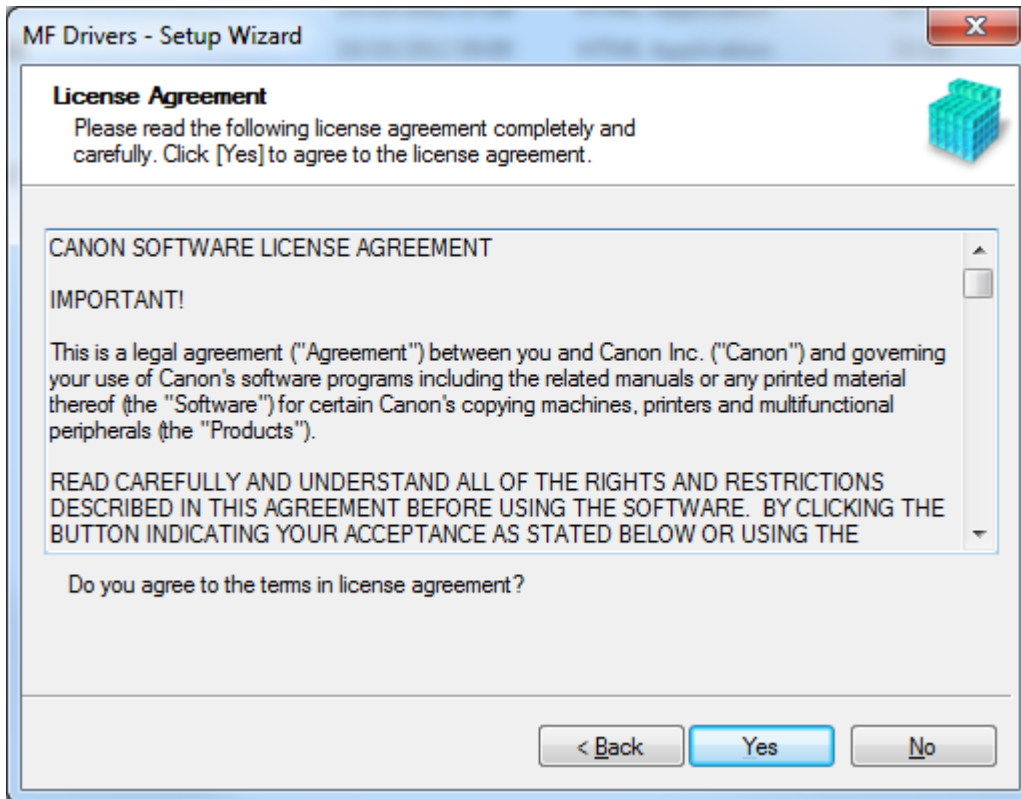
按一下「Download」。下載完成後開啟該檔案安裝



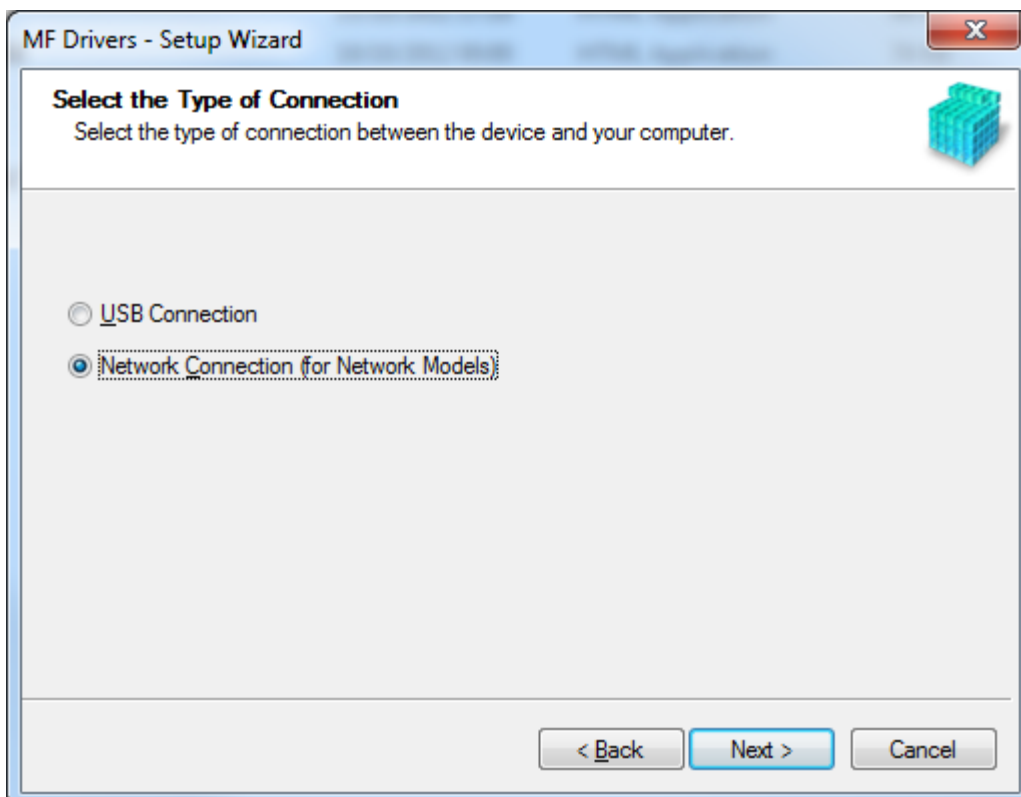
12. 按「Next」



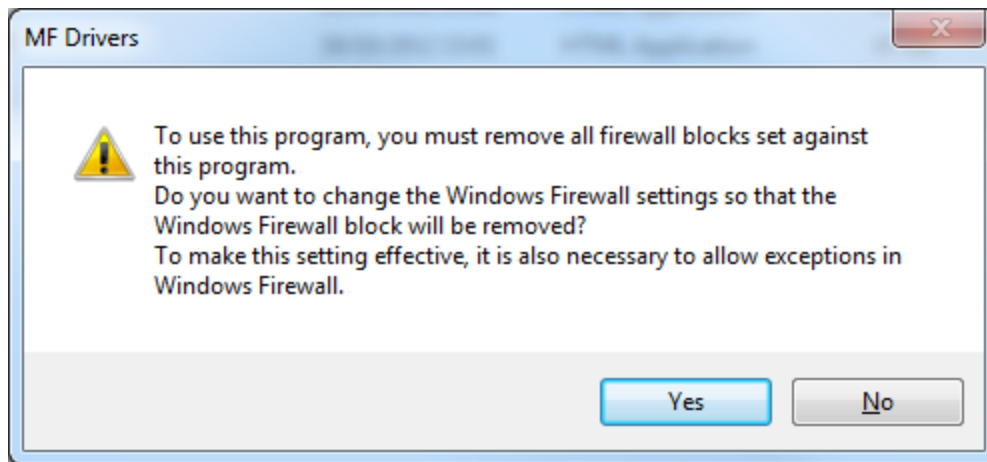
13. 按「Yes」



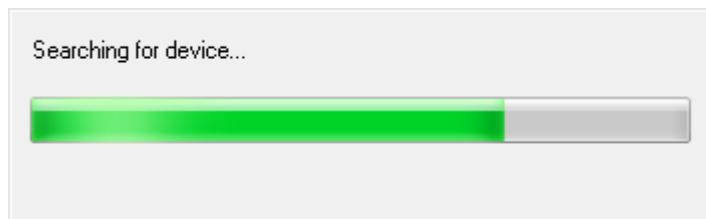
14. 選擇「Network Connection (for Network Models)」



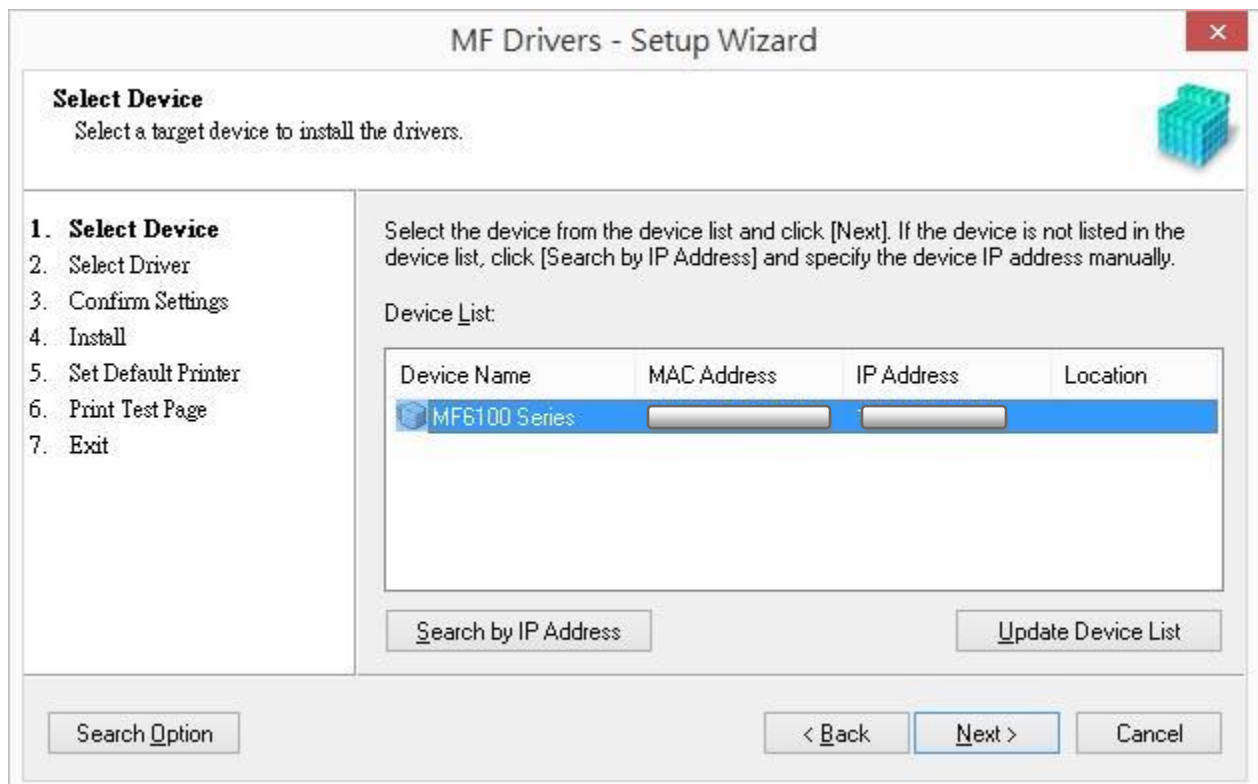
15. 確定已移除所有防火牆對此程式的封鎖設定



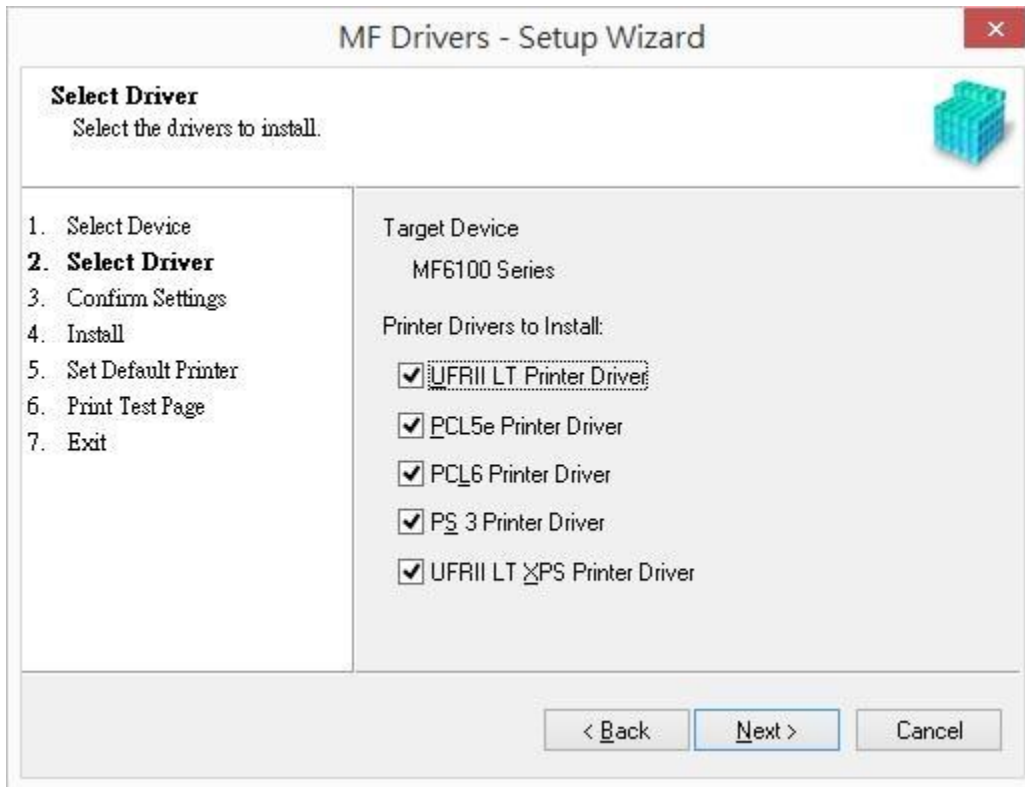
16. 搜尋裝置中



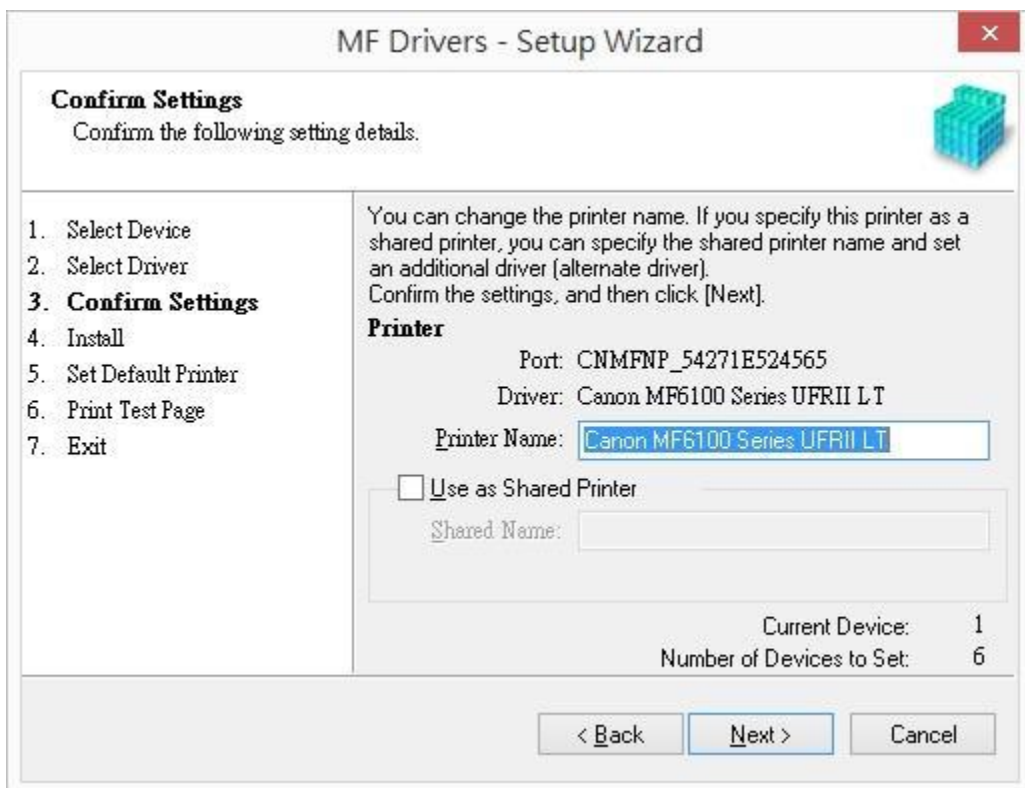
17. 按「Next」



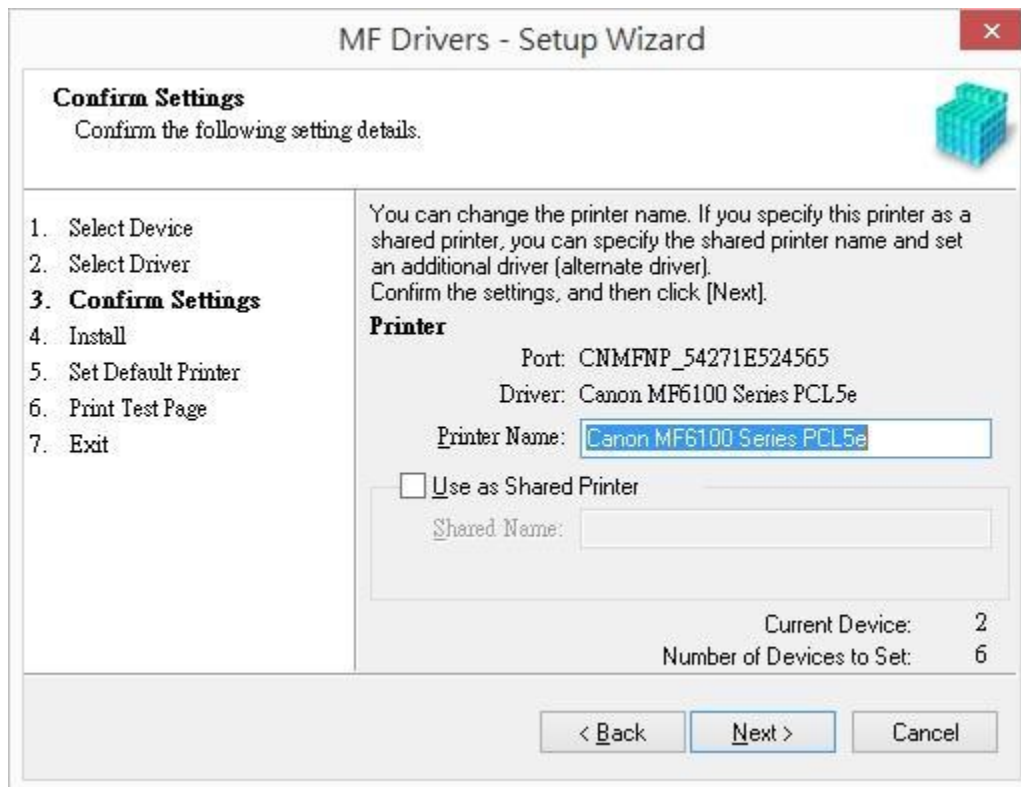
18. 按「Next」



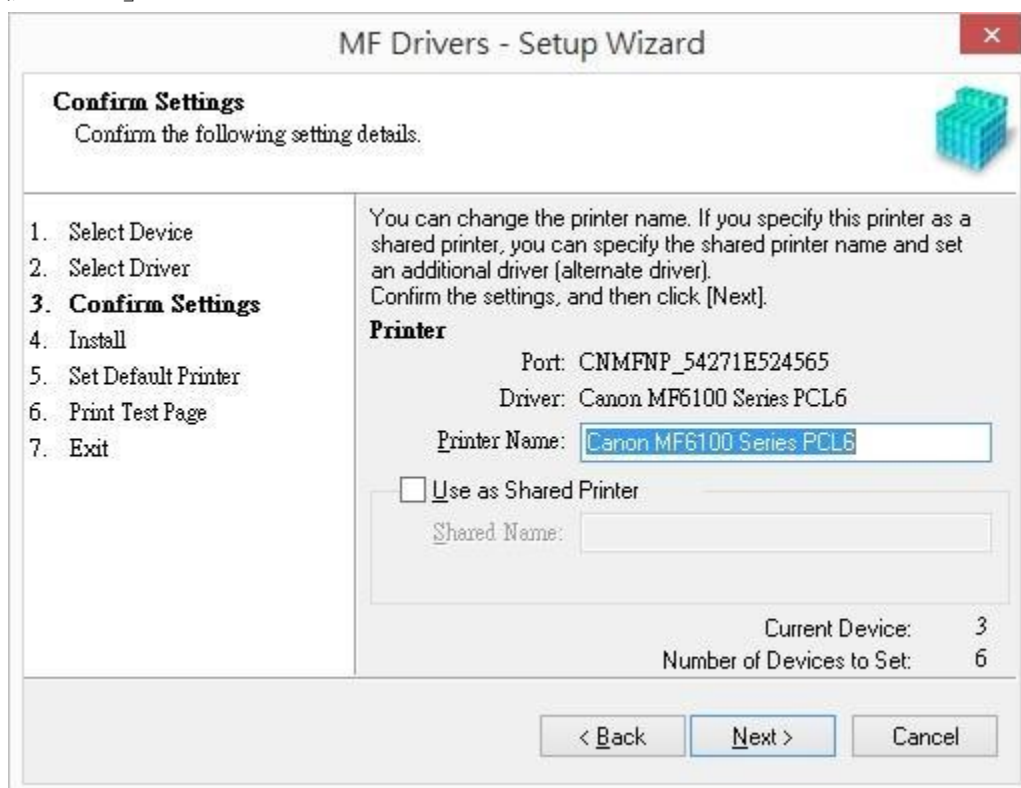
19. 按「Next」



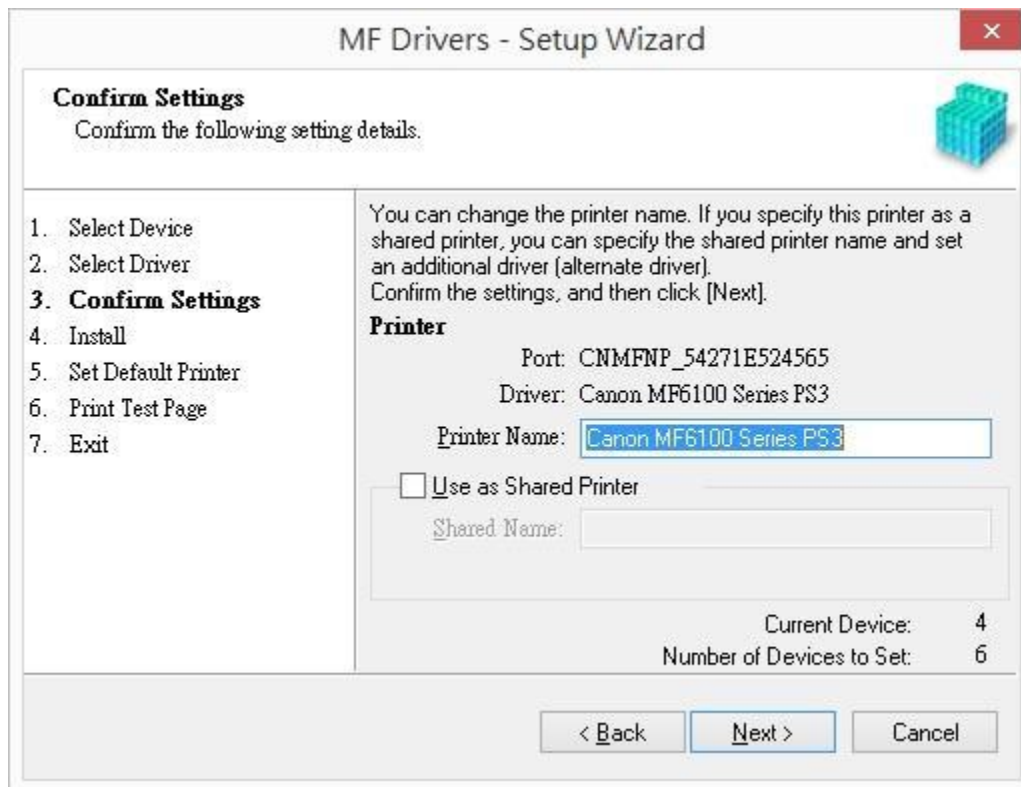
20. 按「Next」



21. 按「Next」

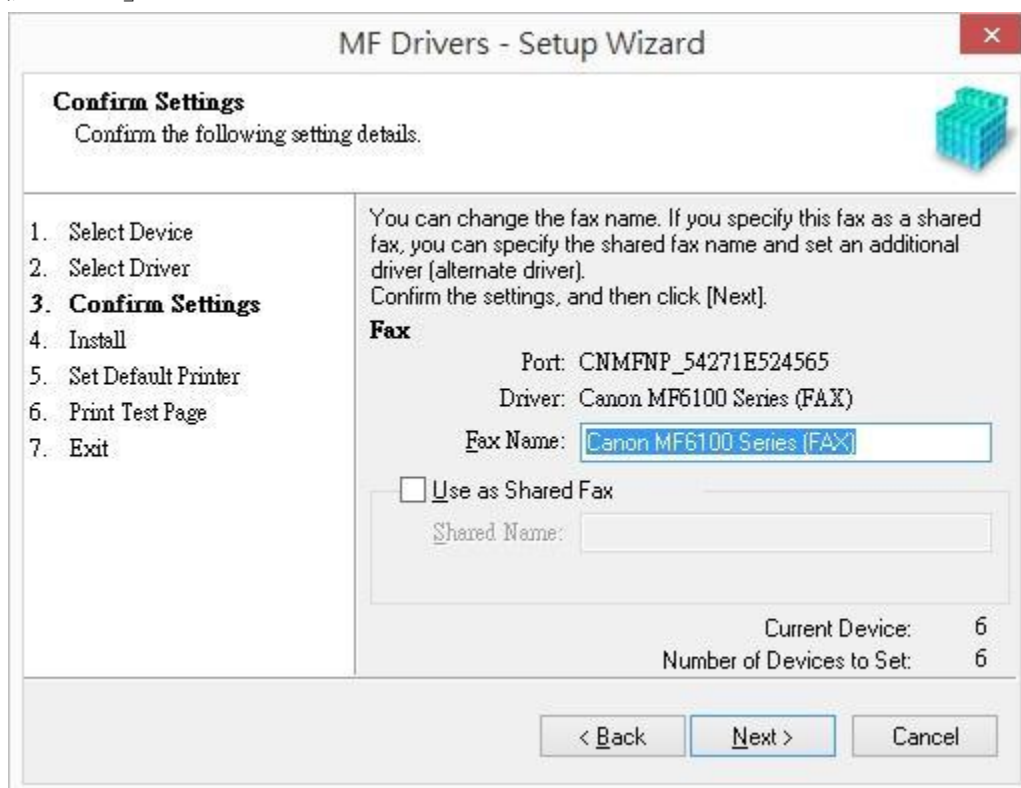


22. 按「Next」



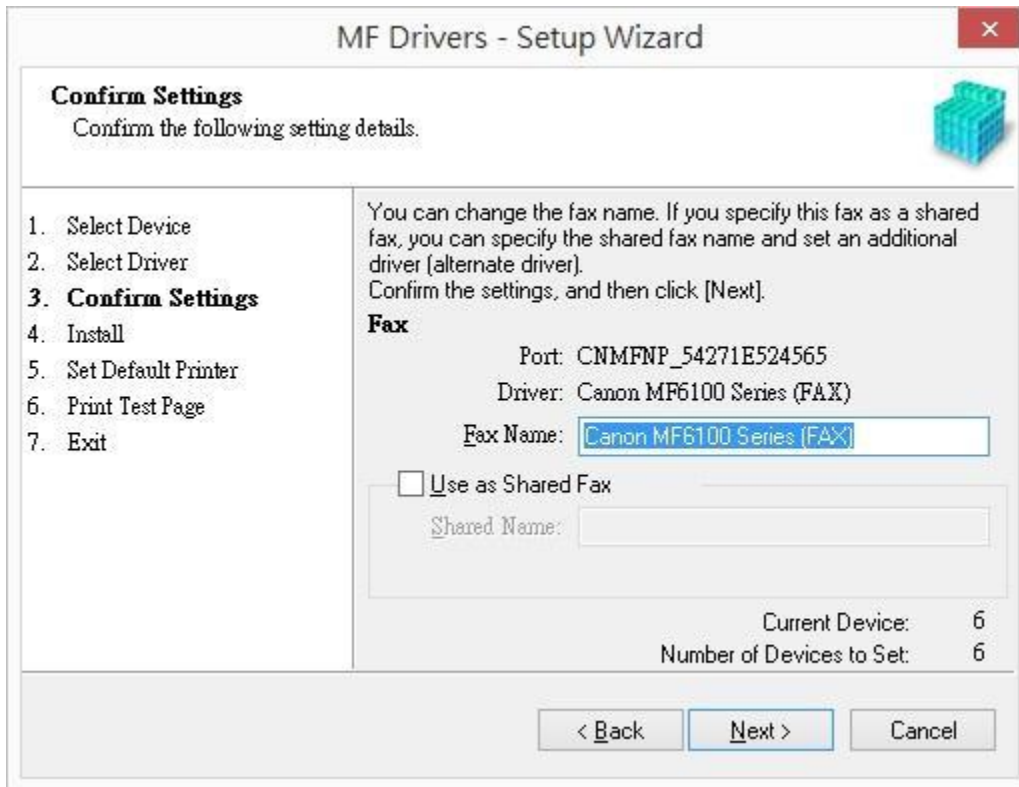
The screenshot shows the 'MF Drivers - Setup Wizard' window at the 'Confirm Settings' step. The title bar includes a close button (X). The main heading is 'Confirm Settings' with the instruction 'Confirm the following setting details.' and a printer icon. A progress list on the left shows steps 1 through 7, with '3. Confirm Settings' highlighted. The main content area contains a paragraph: 'You can change the printer name. If you specify this printer as a shared printer, you can specify the shared printer name and set an additional driver (alternate driver). Confirm the settings, and then click [Next].' Below this is the 'Printer' section with 'Port: CNMFNP_54271E524565' and 'Driver: Canon MF6100 Series PS3'. A text box for 'Printer Name' contains 'Canon MF6100 Series PS3'. There is an unchecked checkbox for 'Use as Shared Printer' and an empty 'Shared Name' text box. At the bottom right, it shows 'Current Device: 4' and 'Number of Devices to Set: 6'. The bottom of the window has three buttons: '< Back', 'Next >', and 'Cancel'.

23. 按「Next」

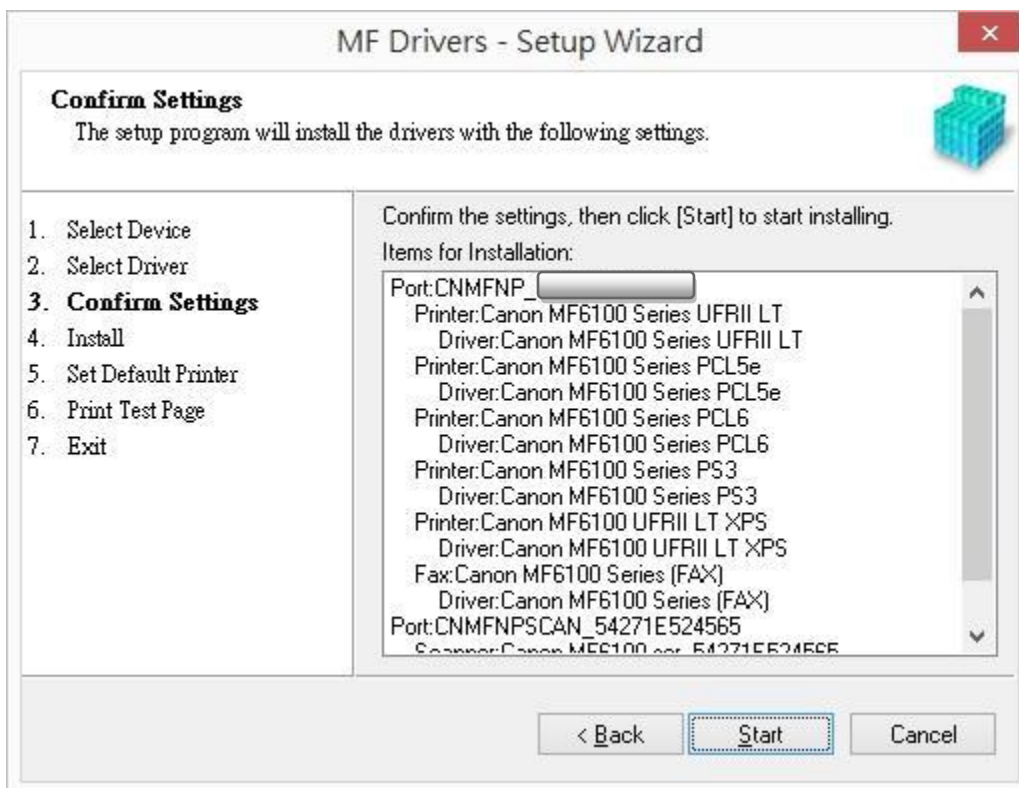


The screenshot shows the 'MF Drivers - Setup Wizard' window at the 'Confirm Settings' step for a fax. The title bar includes a close button (X). The main heading is 'Confirm Settings' with the instruction 'Confirm the following setting details.' and a printer icon. A progress list on the left shows steps 1 through 7, with '3. Confirm Settings' highlighted. The main content area contains a paragraph: 'You can change the fax name. If you specify this fax as a shared fax, you can specify the shared fax name and set an additional driver (alternate driver). Confirm the settings, and then click [Next].' Below this is the 'Fax' section with 'Port: CNMFNP_54271E524565' and 'Driver: Canon MF6100 Series (FAX)'. A text box for 'Fax Name' contains 'Canon MF6100 Series (FAX)'. There is an unchecked checkbox for 'Use as Shared Fax' and an empty 'Shared Name' text box. At the bottom right, it shows 'Current Device: 6' and 'Number of Devices to Set: 6'. The bottom of the window has three buttons: '< Back', 'Next >', and 'Cancel'.

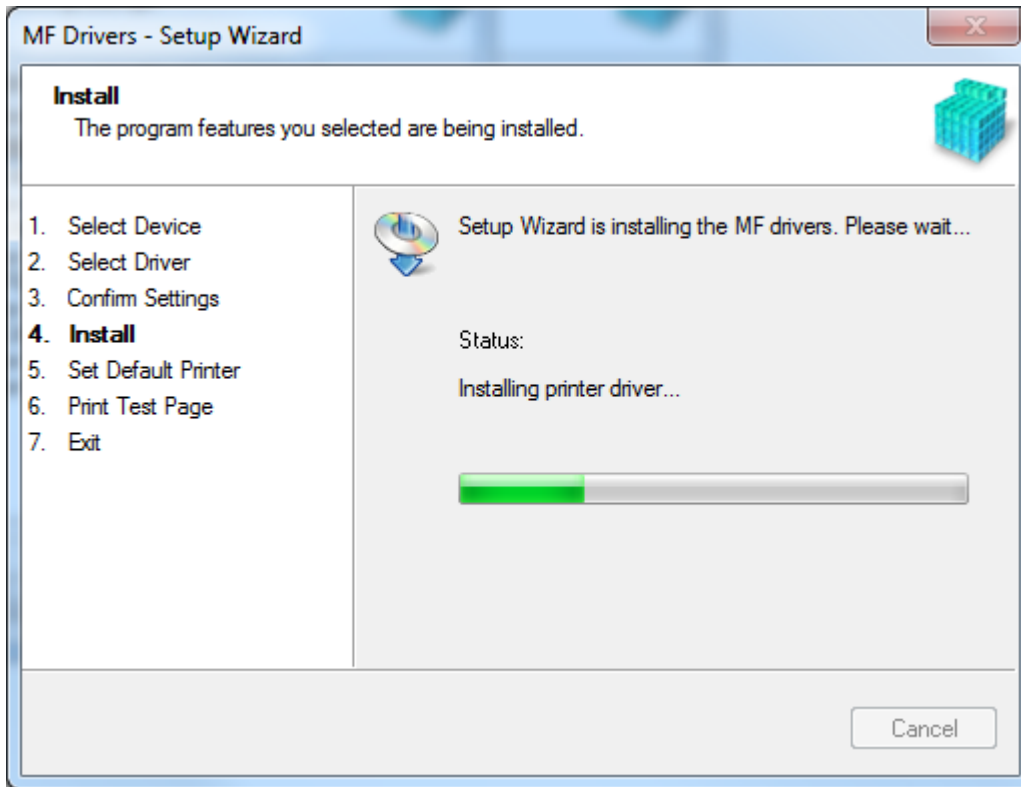
24. 按「Next」



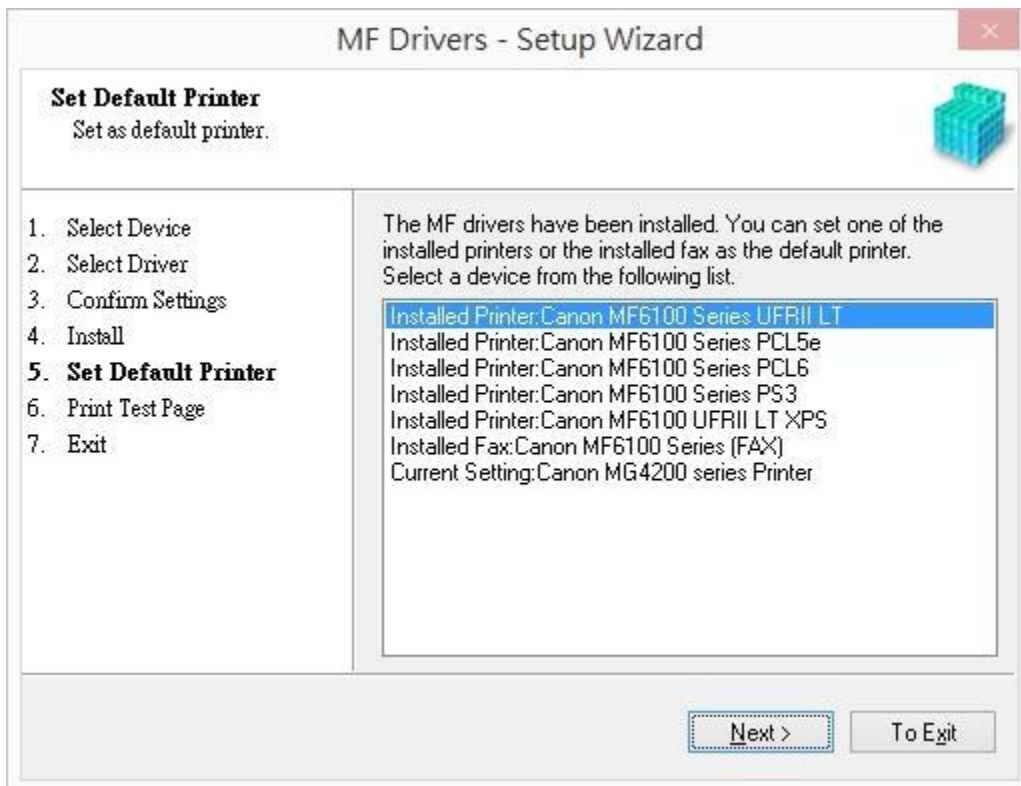
25. 按「Start」



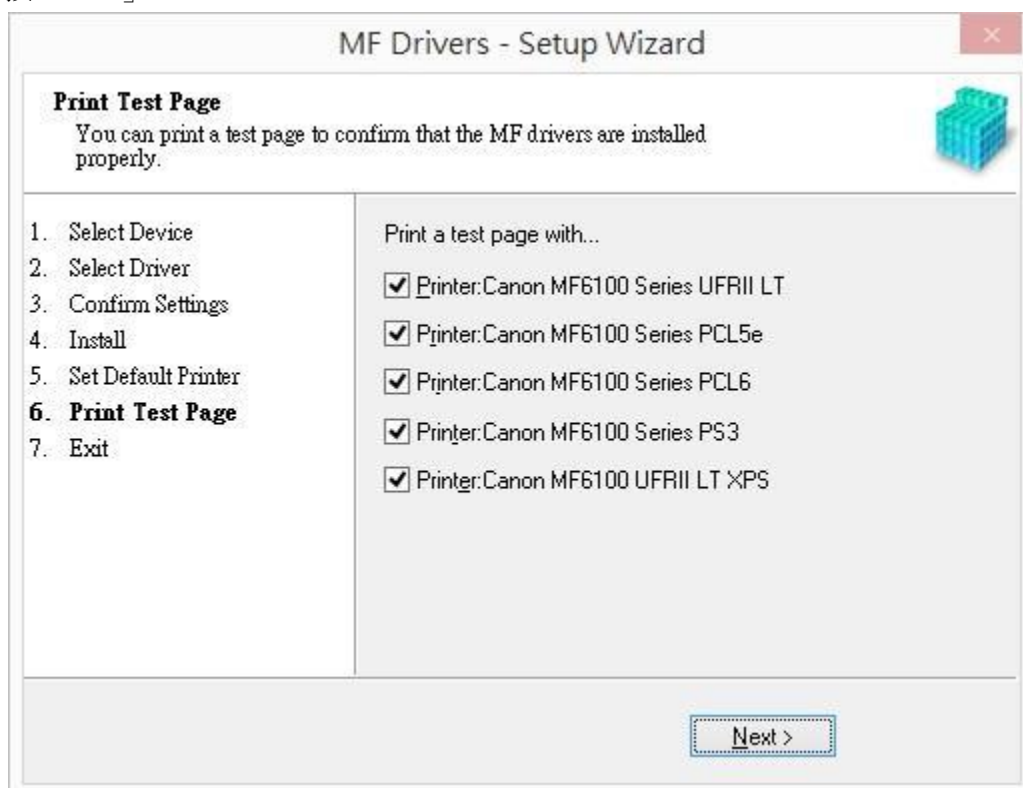
26. 安裝進行中



27. 按「Next」



28. 按「Next」



29. 按「Exit」



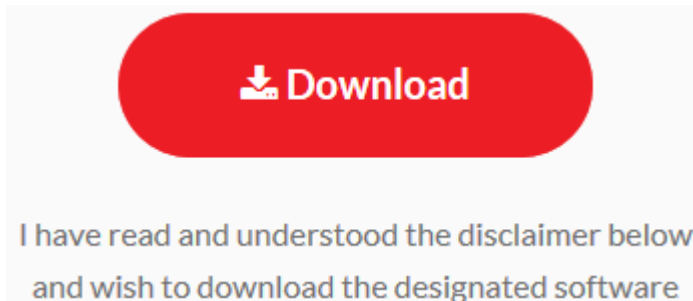
30. 點擊以下連結下載有關之軟件程式

[Windows 32bit & 64bit] Tool Box Ver.4.9.1.1.mf17

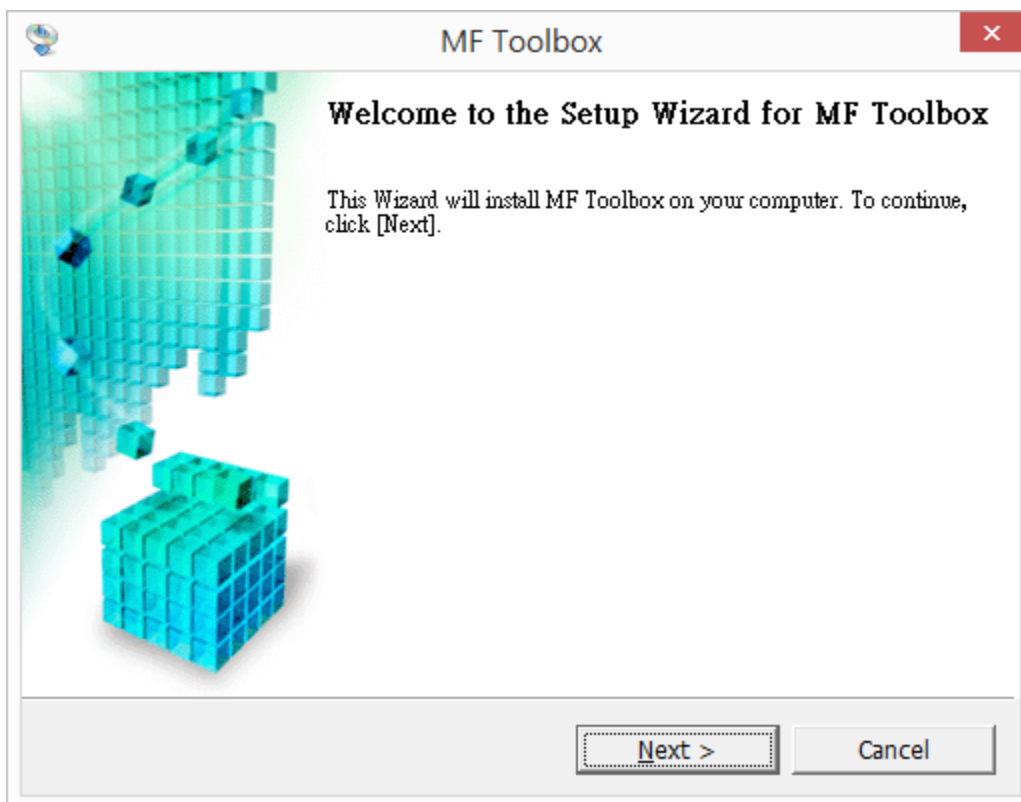
https://hk.canon/zh_HK/support/0200155904/1

下載及安裝步驟

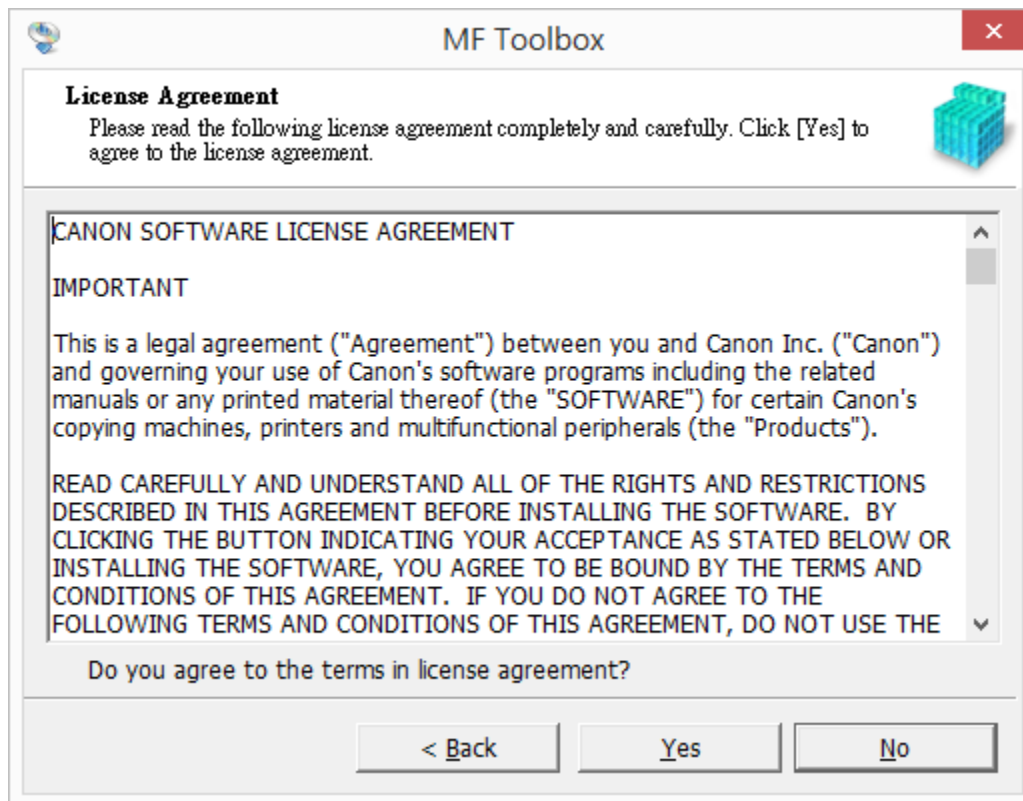
按一下「Download」。下載完成後開啟該檔案安裝



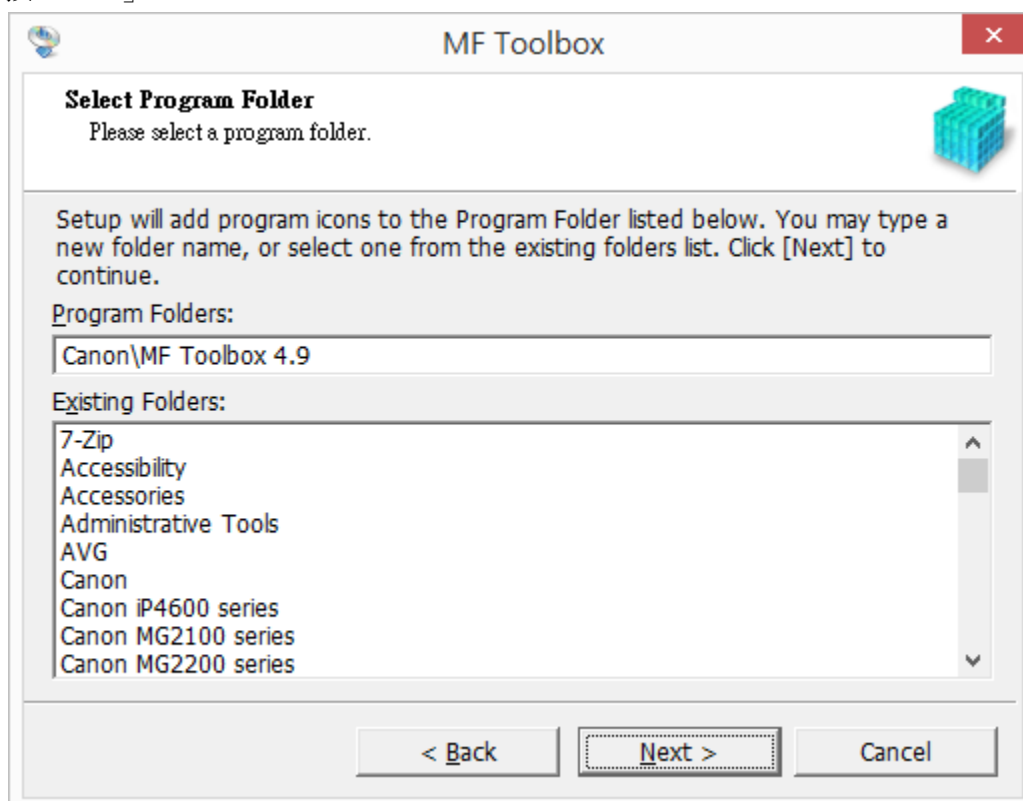
31. 按「Next」



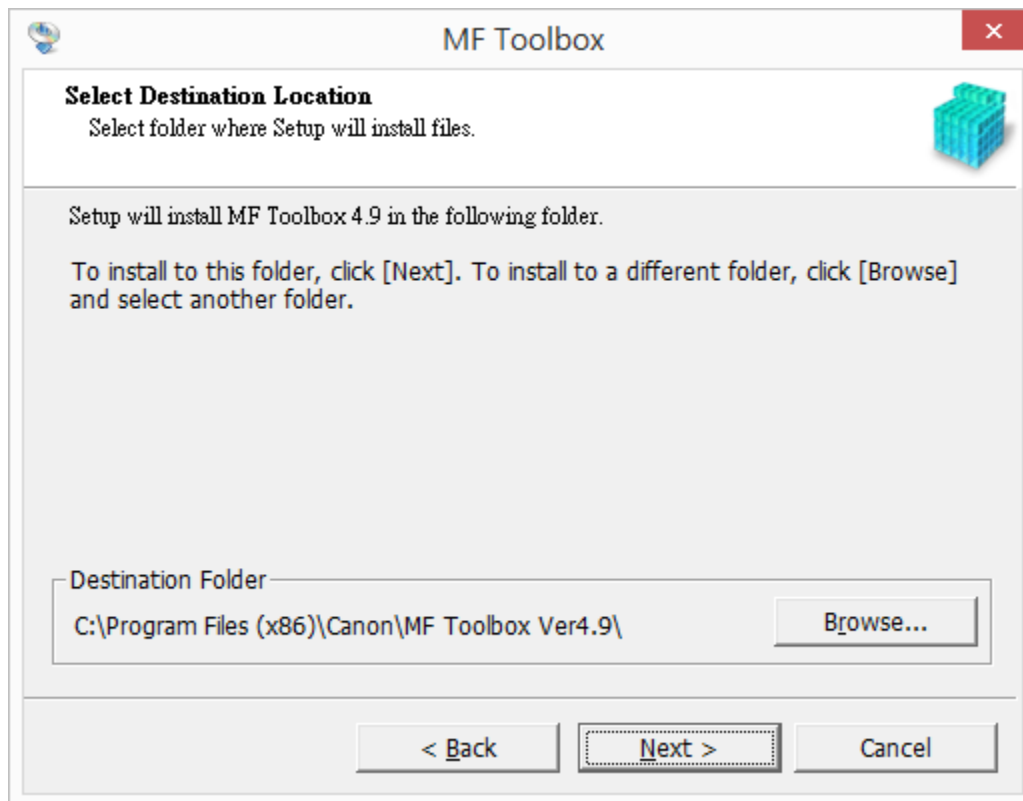
32. 按「Yes」



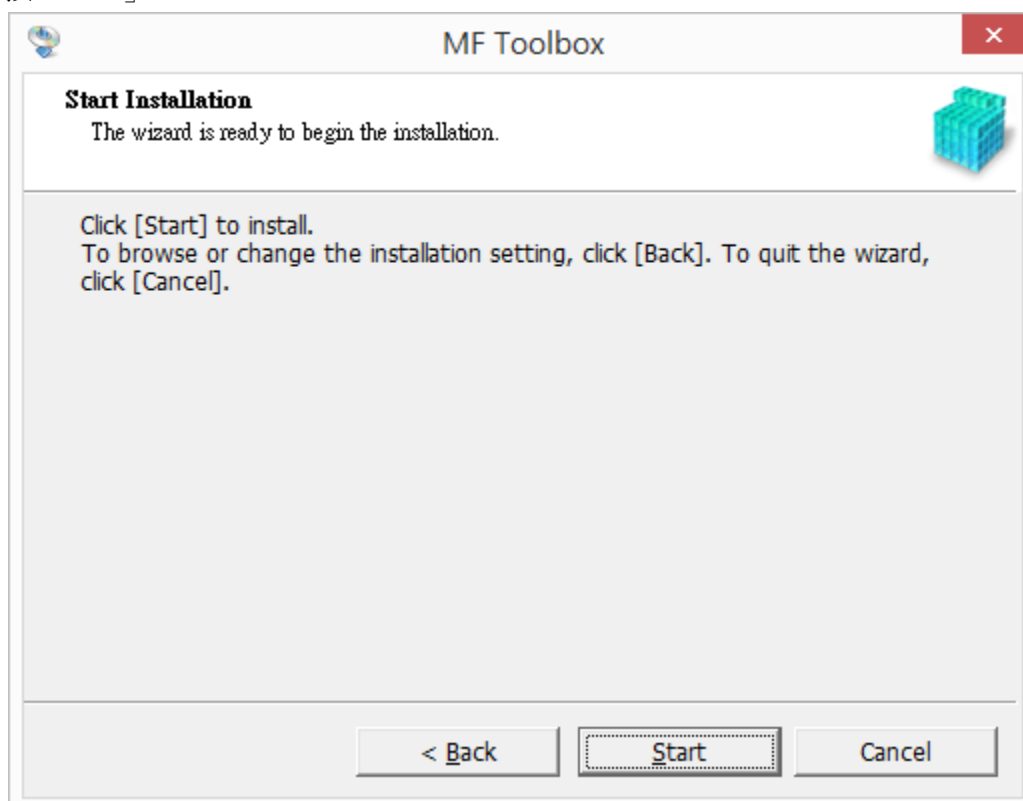
33. 按「Next」



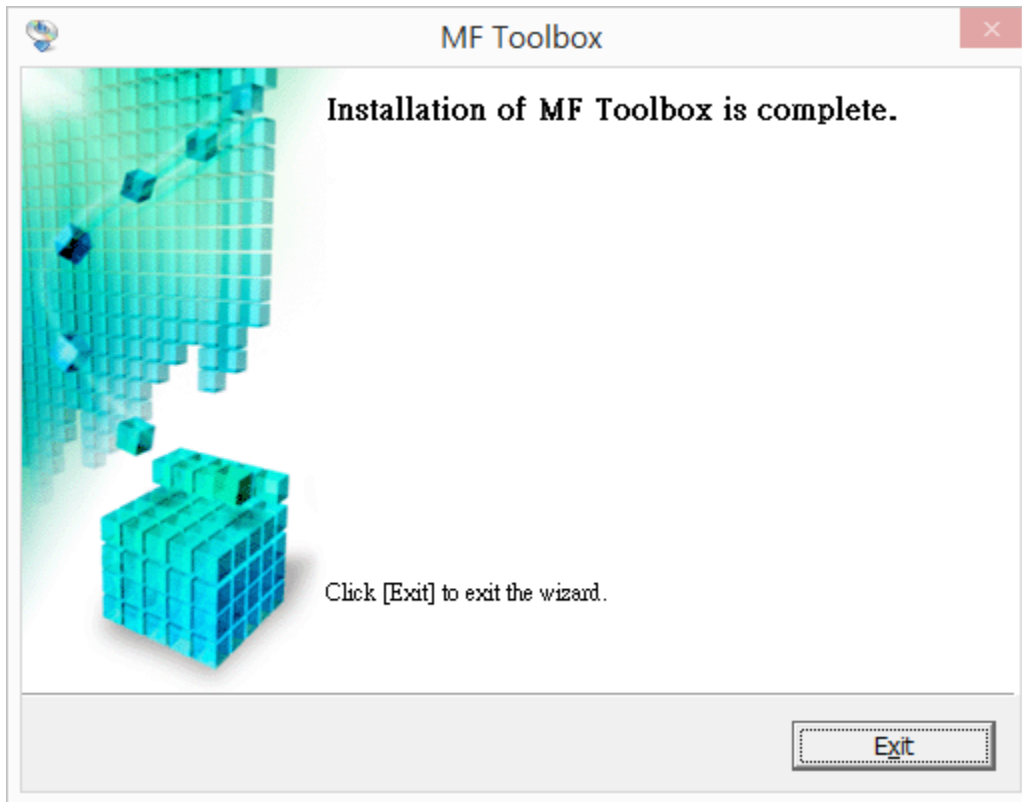
34. 按「Next」



35. 按「Start」



36. 按「Exit」



-完-