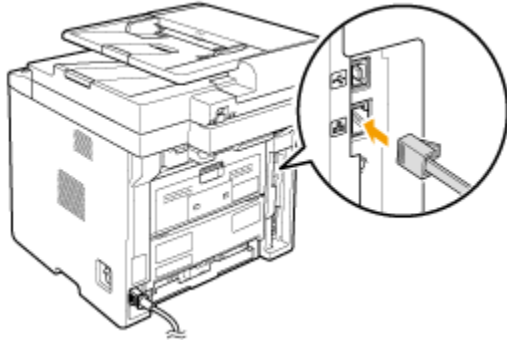

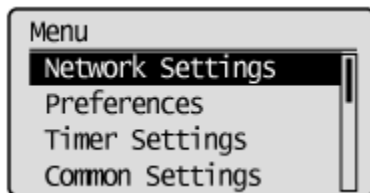


MF6180dw 在 Windows 8 透過有線 LAN 連線連接印表機之驅動程式步驟

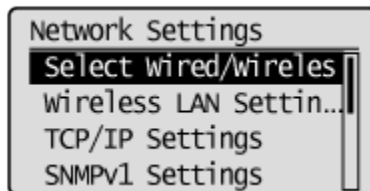
1. 先將網絡線接駁至打印機 LAN 插頭:



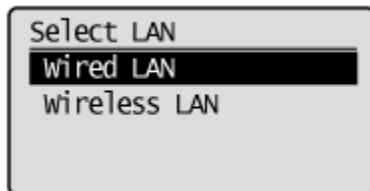
2. 按「功能表 (Menu)」
3. 選擇「網路設定 (Network Settings)」，按「OK」



4. 選擇「選擇有線/無線區域網絡 (Select Wired/Wireless LAN)」，按「OK」



5. 選擇「有線區域網絡 (Wired LAN)」，按「OK」



下載及安裝步驟

6. 點擊以下連結下載有關之驅動程式

用於 32 位元

[Windows 32bit] imageCLASS MF6180dw MFDivers (UFR II / PCL / FAX / ScanGear)

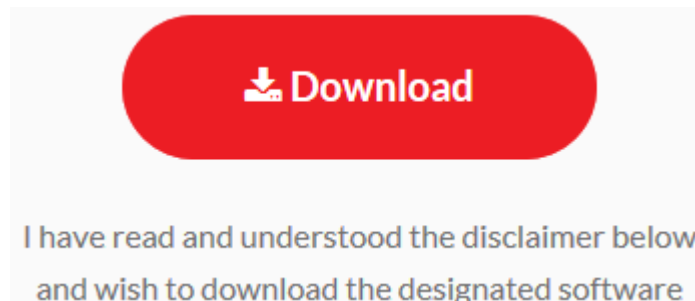
https://hk.canon/zh_HK/support/0100802005/5

用於 64 位元

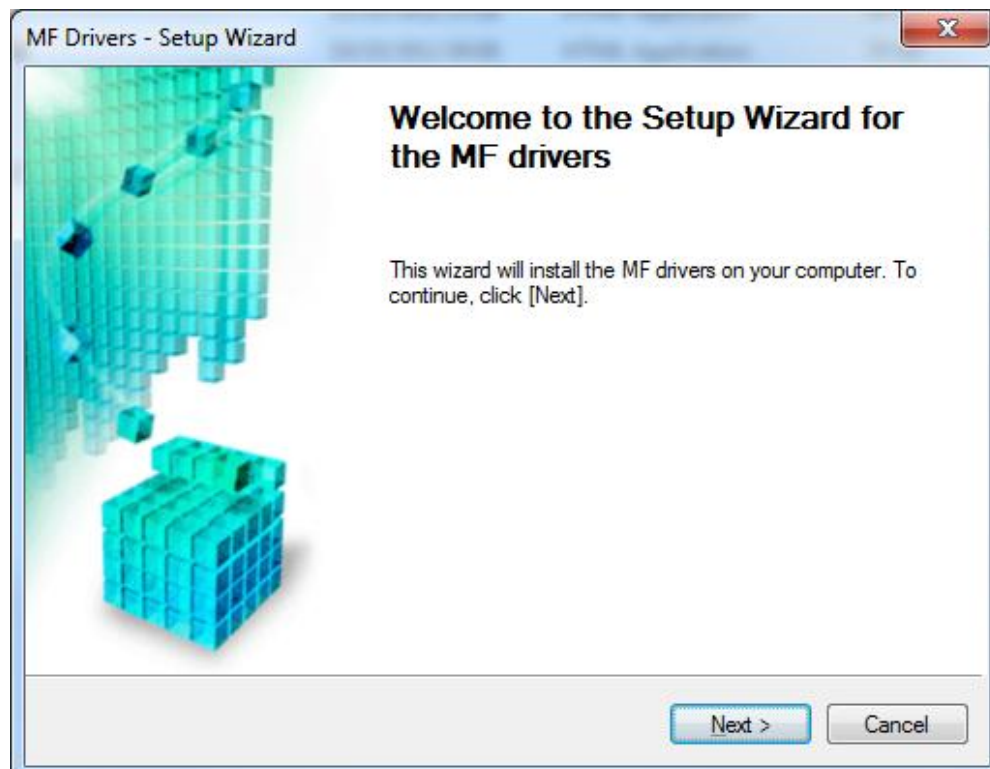
[Windows 64bit] imageCLASS MF6180dw MFDivers (UFR II / PCL / FAX / ScanGear)

https://hk.canon/zh_HK/support/0100802104/6

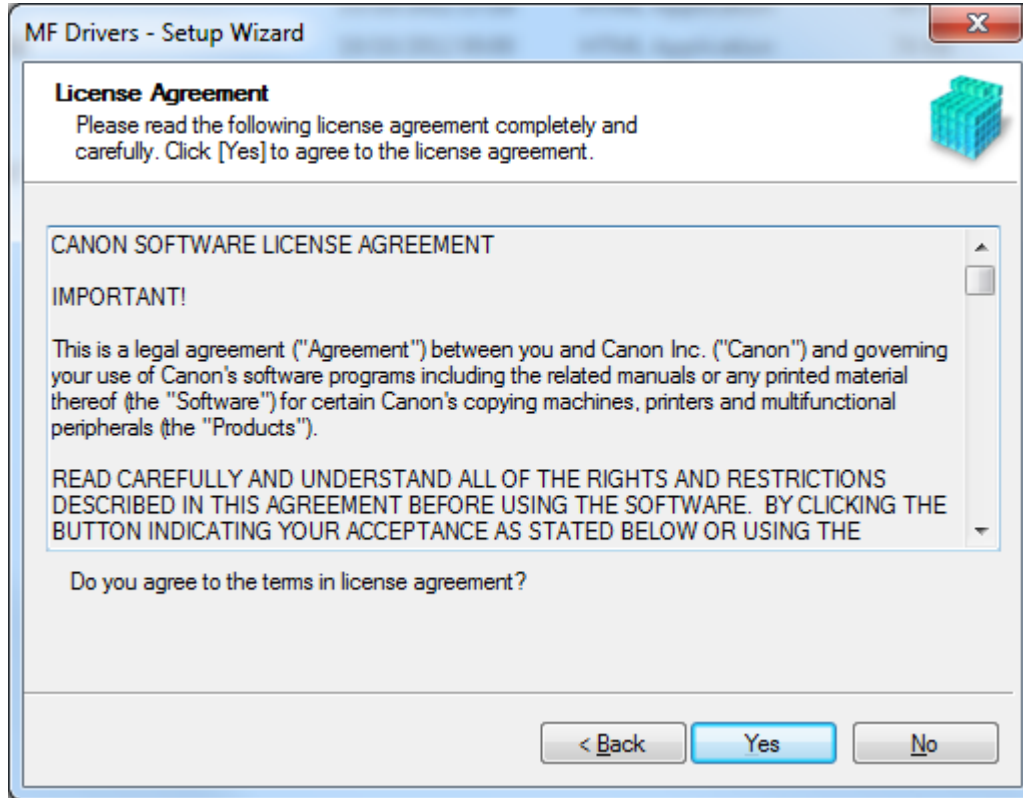
7. 按一下「Download」。下載完成後開啟該檔案安裝



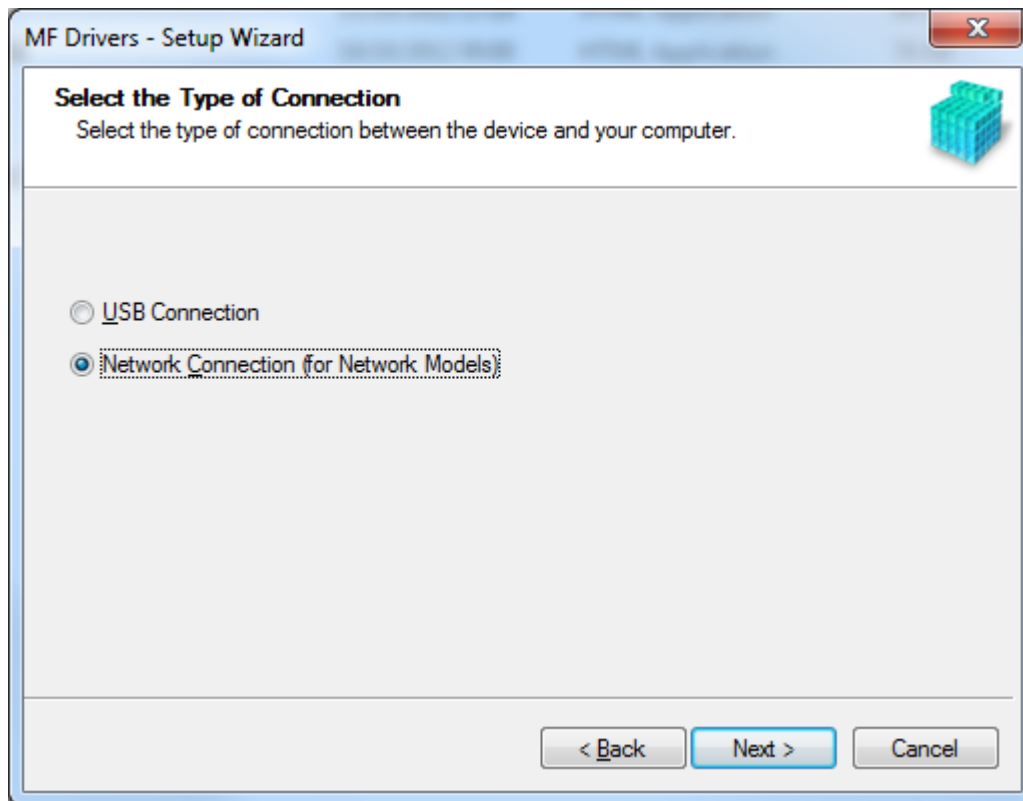
8. 按「Next」



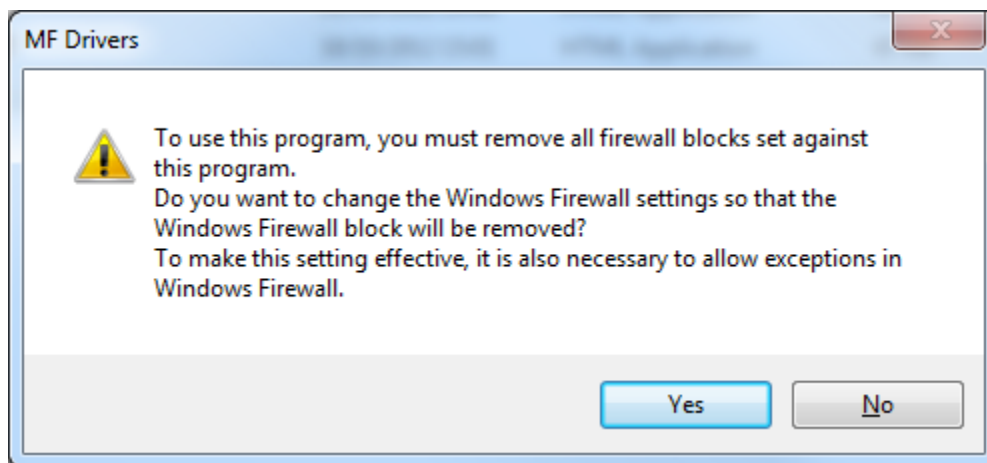
按「Yes」



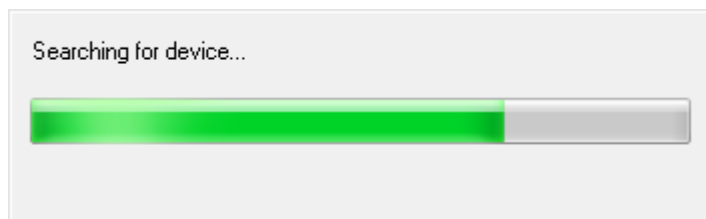
9. 選擇「Network Connection (for Network Models)」



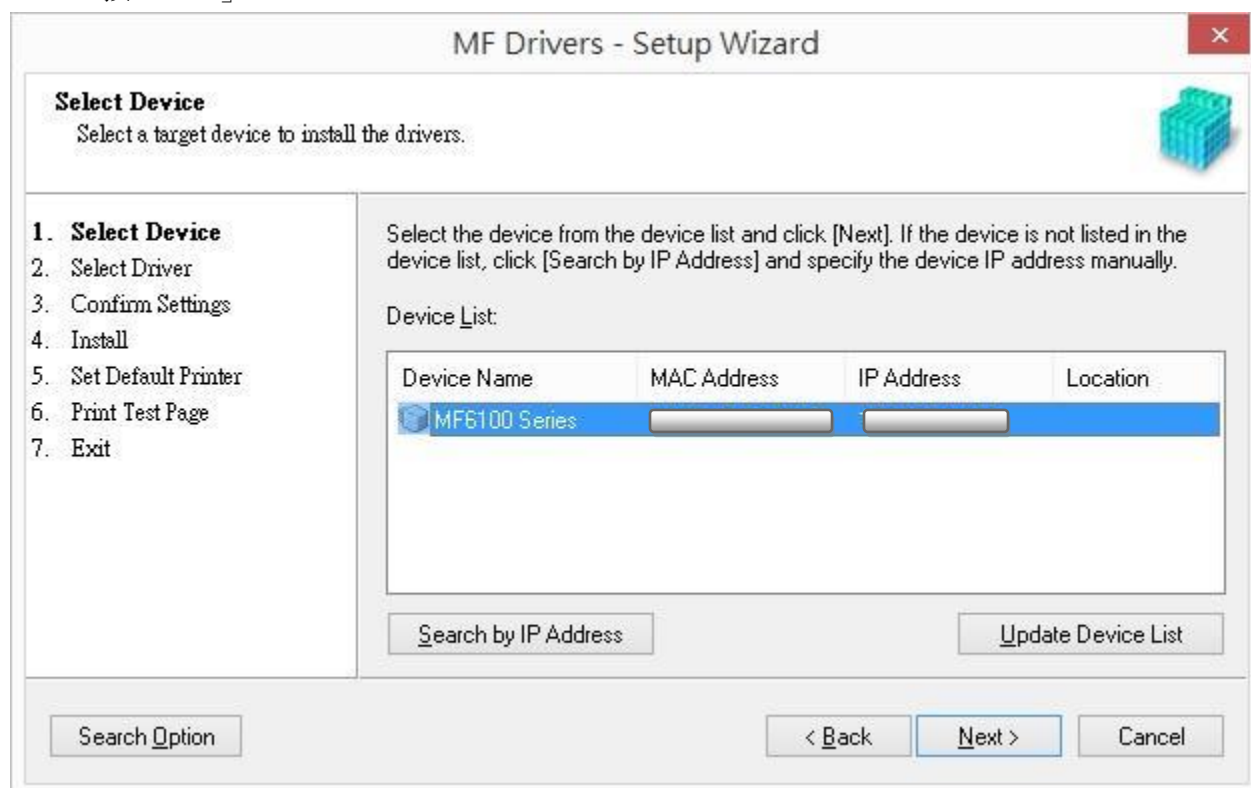
10. 確定已移除所有防火牆對此程式的封鎖設定



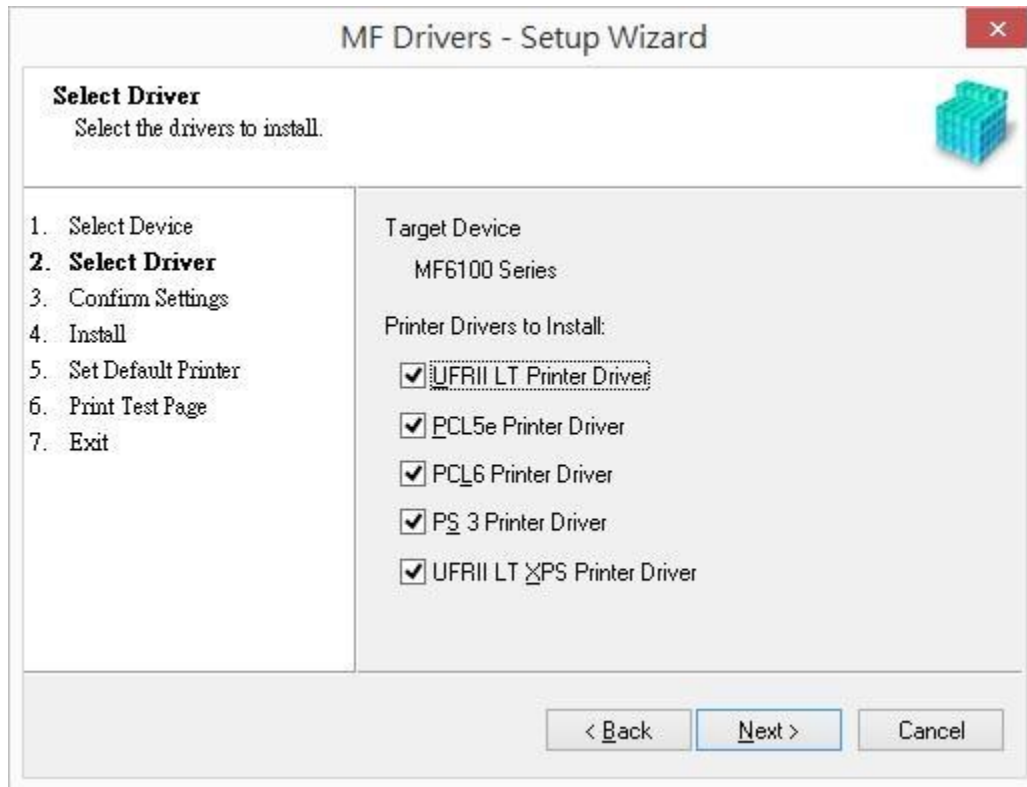
11. 搜尋裝置中



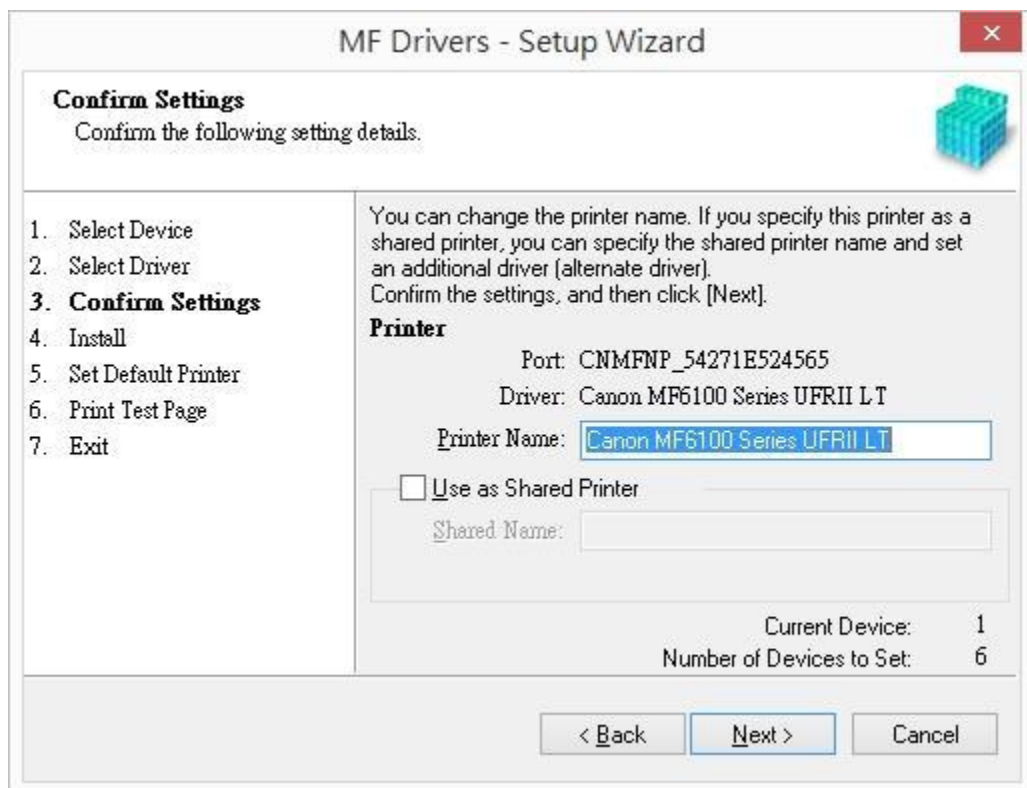
12. 按「Next」



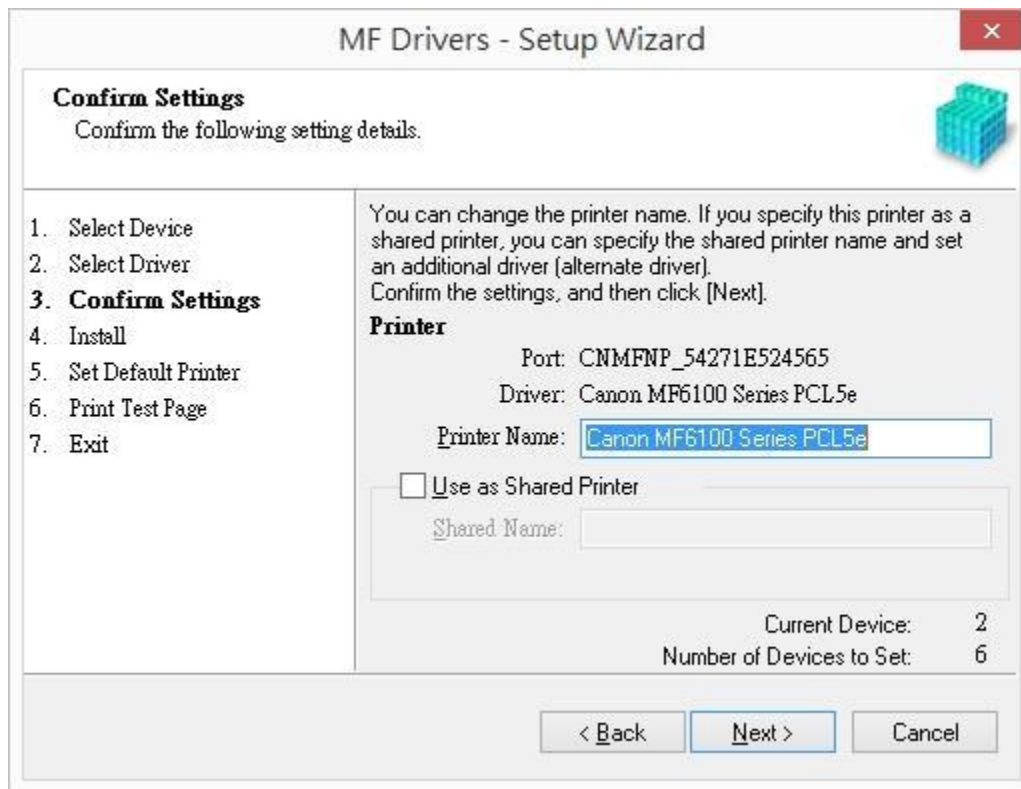
13. 按「Next」



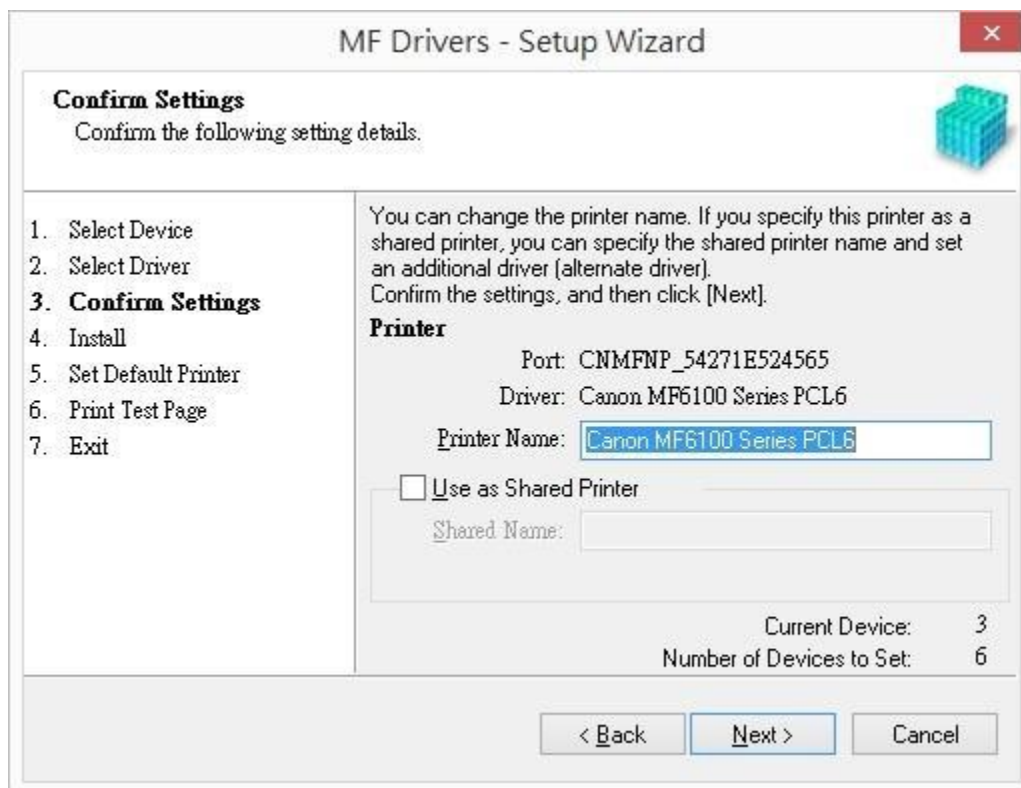
14. 按「Next」



15. 按「Next」



16. 按「Next」



17. 按「Next」

MF Drivers - Setup Wizard

Confirm Settings
Confirm the following setting details.

1. Select Device
2. Select Driver
- 3. Confirm Settings**
4. Install
5. Set Default Printer
6. Print Test Page
7. Exit

You can change the printer name. If you specify this printer as a shared printer, you can specify the shared printer name and set an additional driver (alternate driver). Confirm the settings, and then click [Next].

Printer

Port: CNMFNP_54271E524565
Driver: Canon MF6100 Series PS3
Printer Name:

Use as Shared Printer
Shared Name:

Current Device: 4
Number of Devices to Set: 6

< Back Next > Cancel

18. 按「Next」

MF Drivers - Setup Wizard

Confirm Settings
Confirm the following setting details.

1. Select Device
2. Select Driver
- 3. Confirm Settings**
4. Install
5. Set Default Printer
6. Print Test Page
7. Exit

You can change the fax name. If you specify this fax as a shared fax, you can specify the shared fax name and set an additional driver (alternate driver). Confirm the settings, and then click [Next].

Fax

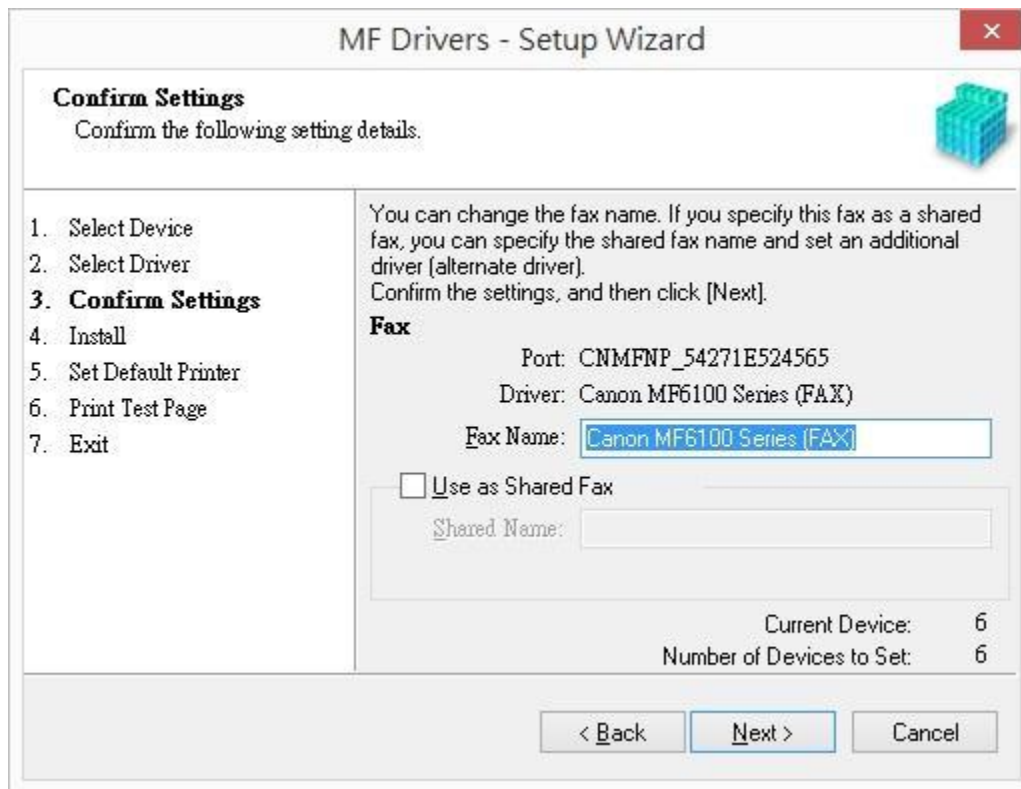
Port: CNMFNP_54271E524565
Driver: Canon MF6100 Series (FAX)
Fax Name:

Use as Shared Fax
Shared Name:

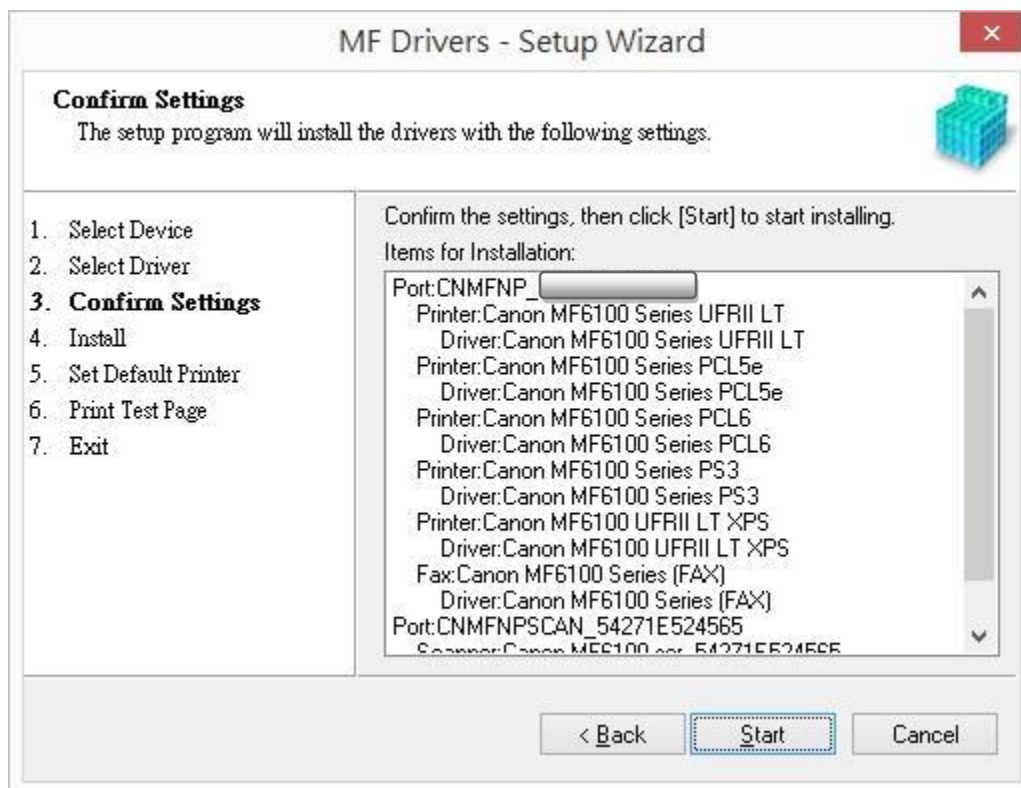
Current Device: 6
Number of Devices to Set: 6

< Back Next > Cancel

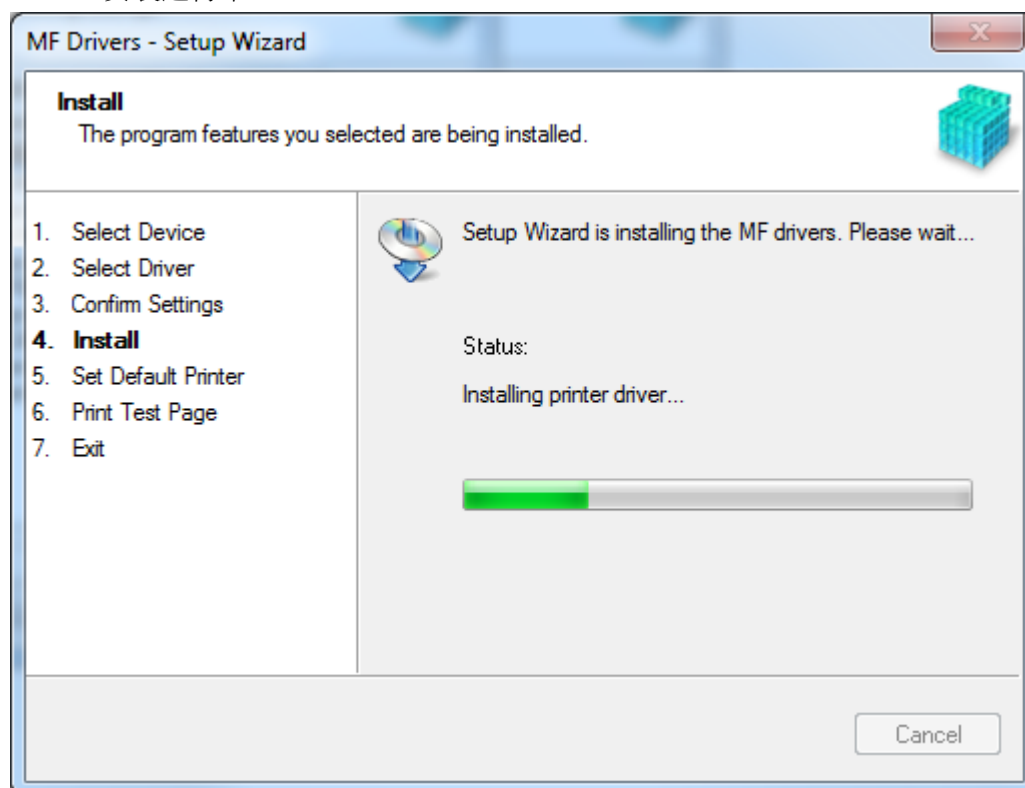
19. 按「Next」



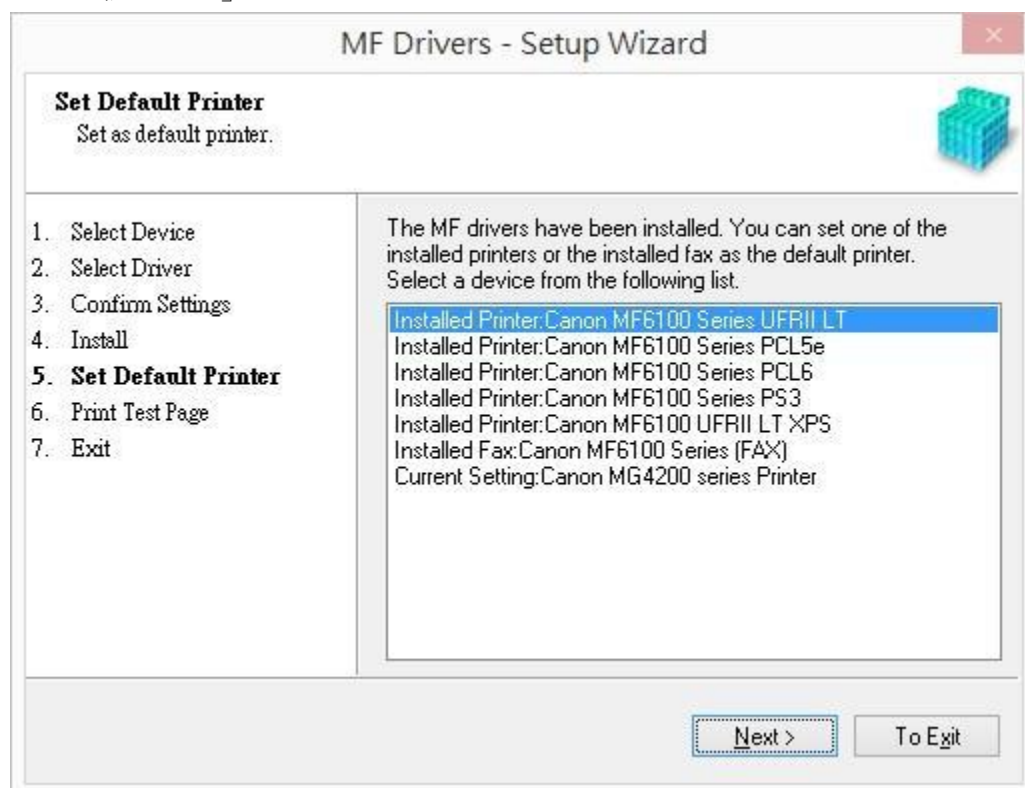
20. 按「Start」



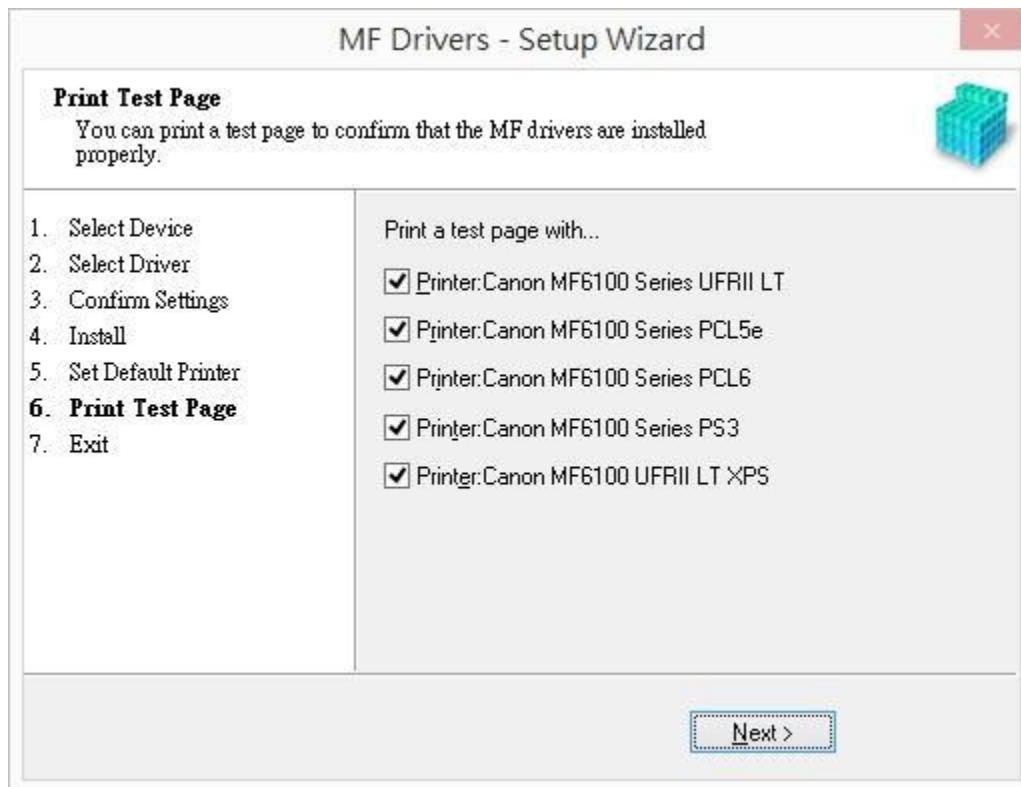
21. 安裝進行中



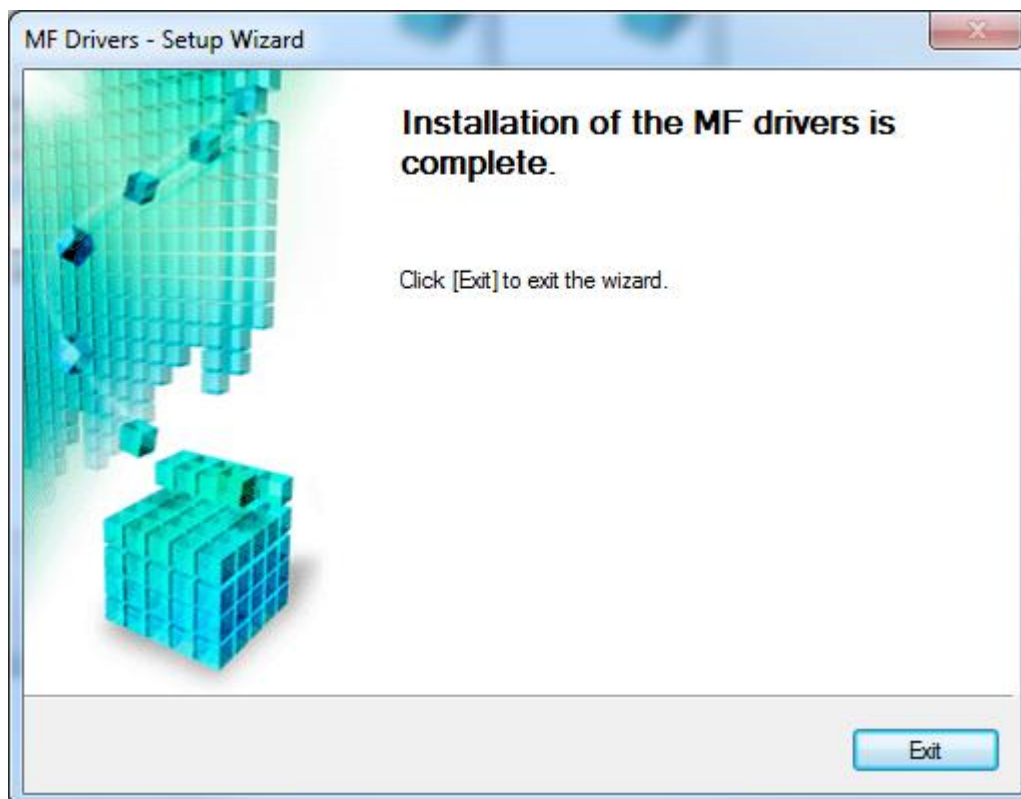
22. 按「Next」



23. 按「Next」



24. 按「Exit」

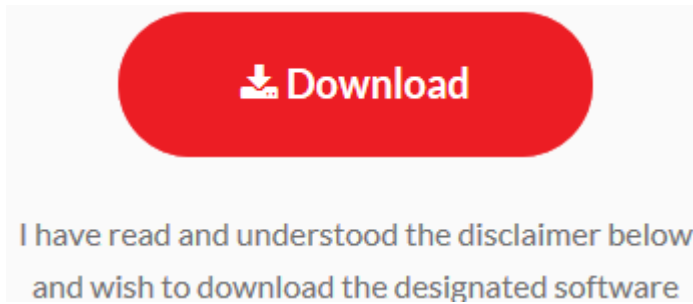


26. 點擊以下連結下載有關之軟件程式
[Windows 32bit & 64bit] Tool Box Ver.4.9.1.1.mf17

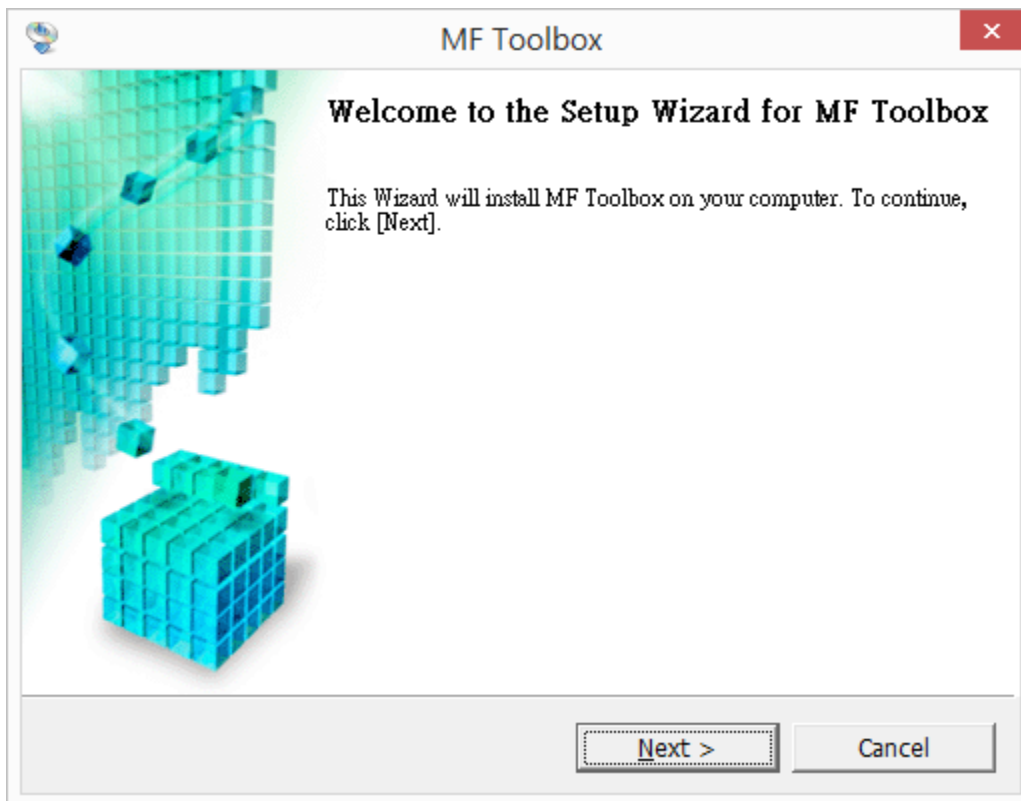
https://hk.canon/zh_HK/support/0200155904/1

下載及安裝步驟

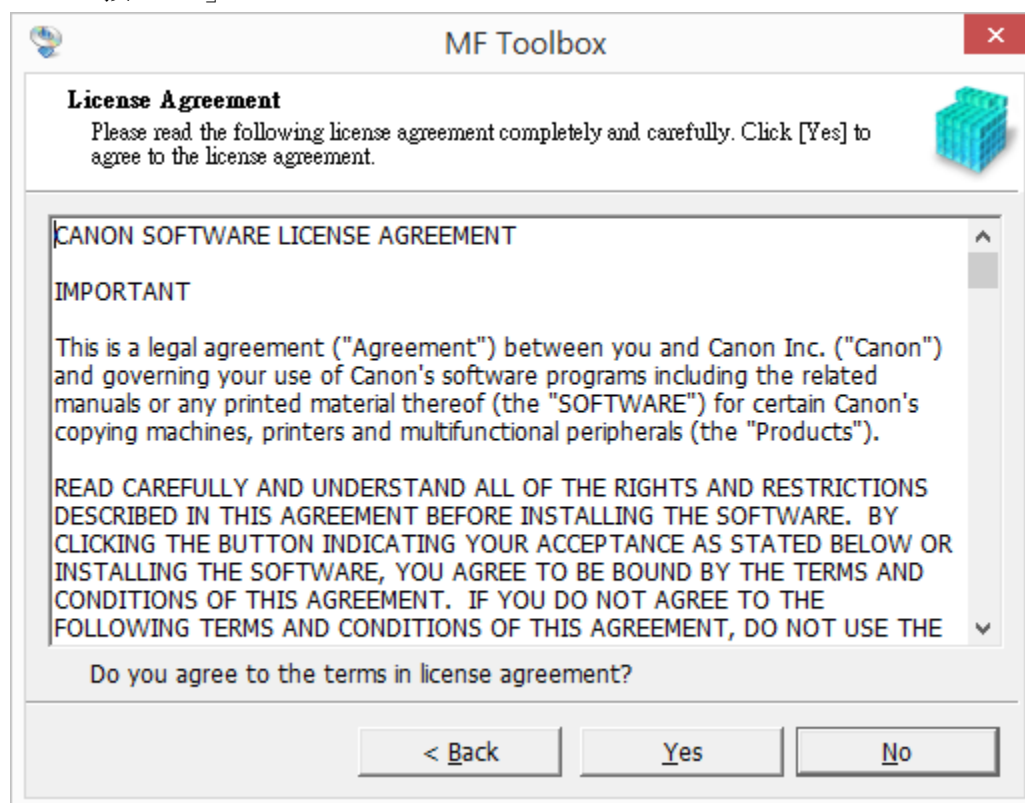
按一下「Download」。下載完成後開啟該檔案安裝



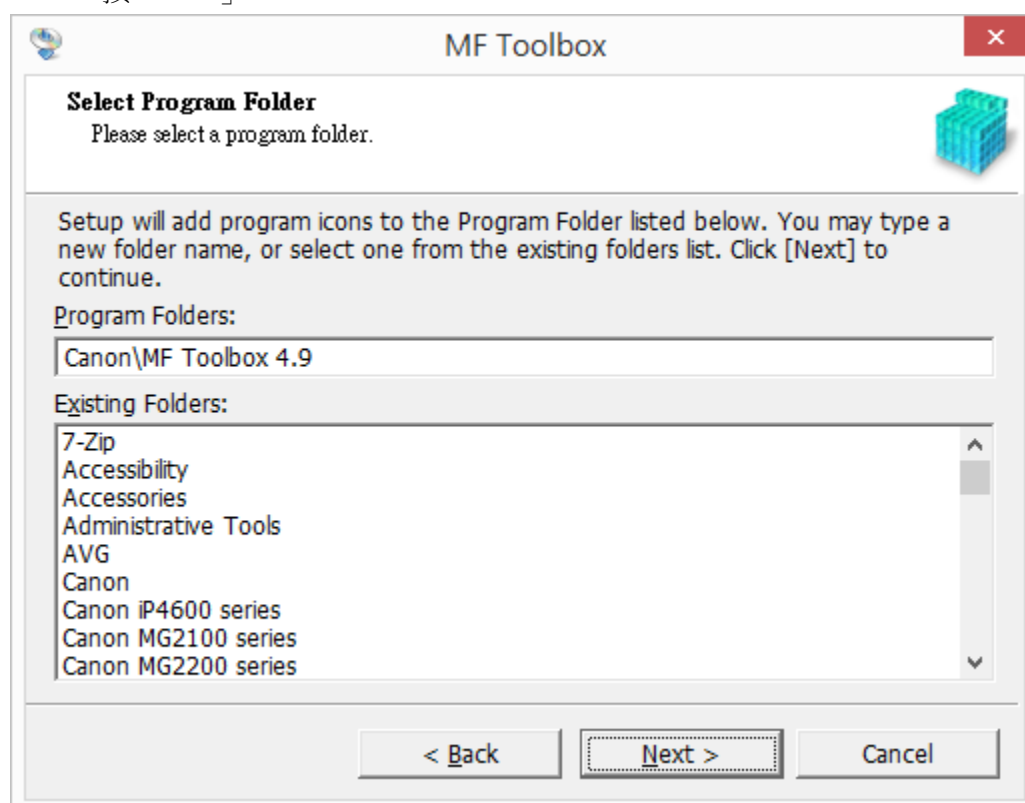
27. 按「Next」



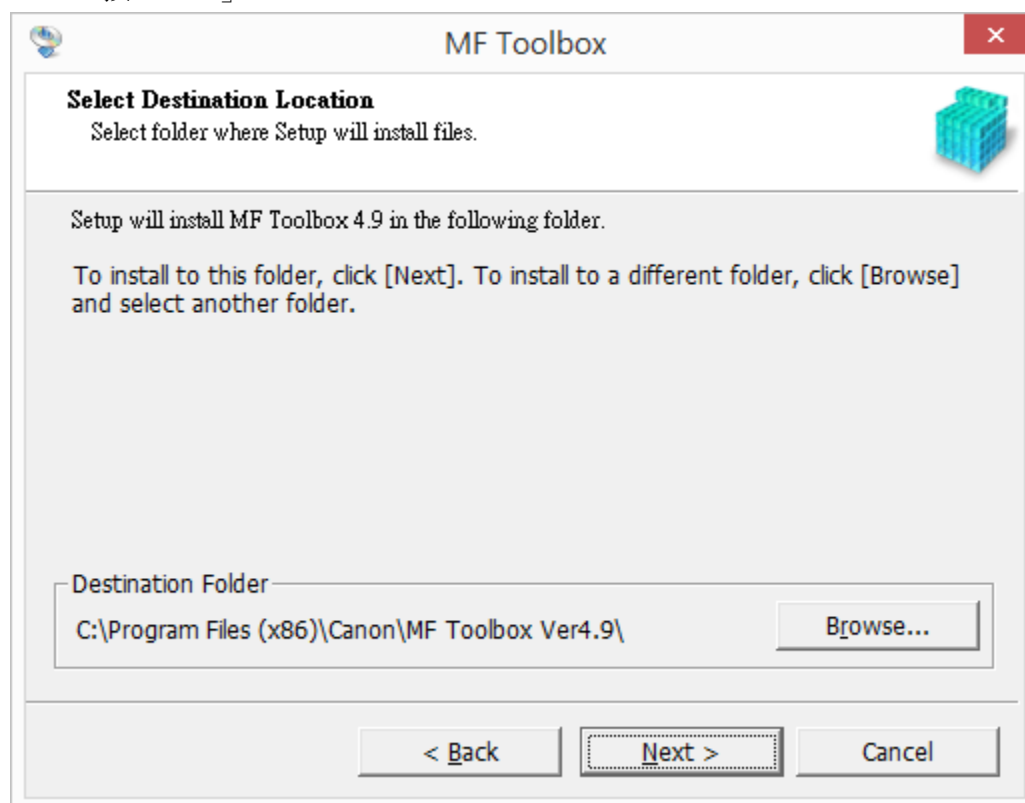
28. 按「Yes」



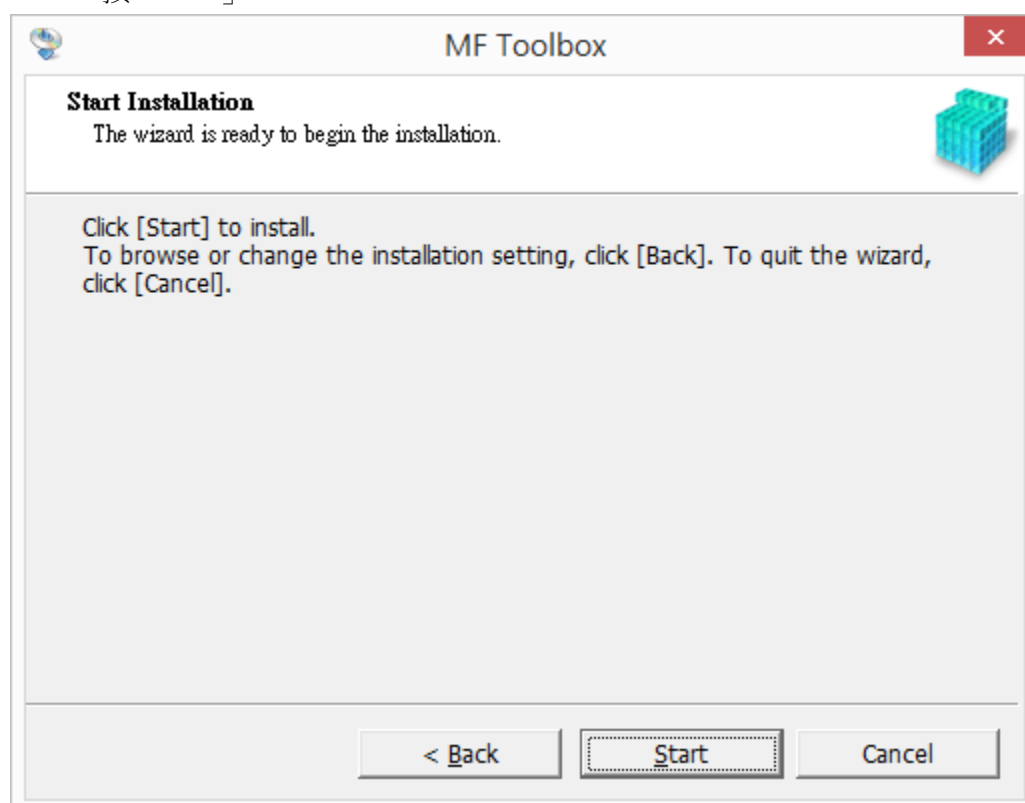
29. 按「Next」



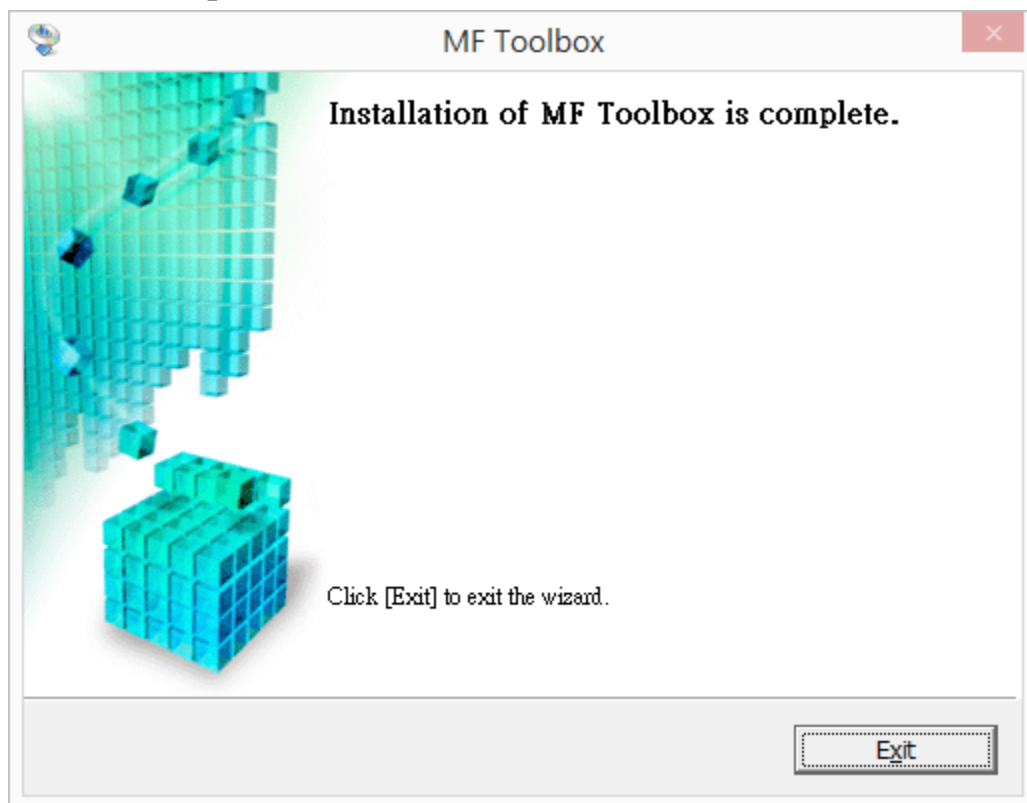
30. 按「Next」



31. 按「Start」



32. 按「Exit」



-完-