

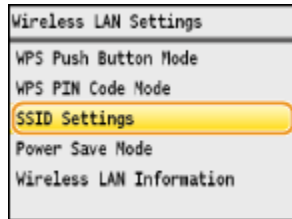


MF8280Cw 安裝 Win 8.1 透過無線 LAN 連線連接印表機之驅動程式步驟

網路設定教學:

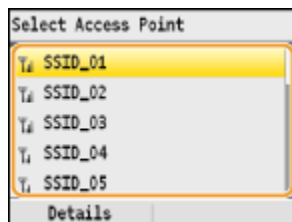
1. 按「功能表 (Menu)」 
2. 選擇「網路設定 (Network Settings)」，按「OK」 
3. 選擇「無線區域網路設定 (Wireless LAN Settings)」，按「OK」 
4. 選擇「SSID 設定 (SSID Settings)」，按「OK」 



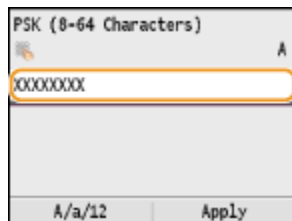
5. 選擇「選擇存取點 (Select Access Point)」，按「OK」 




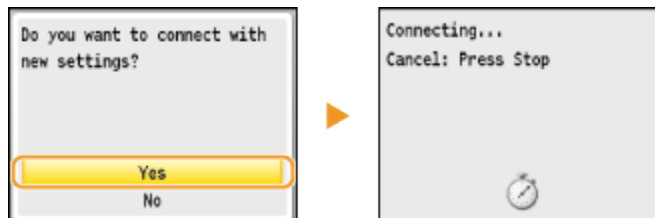
6. 選擇 WIFI 網路，按「OK」 



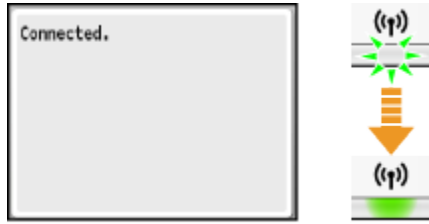
7. 用數字鍵盤輸入 WIFI 密碼後按套用 (螢幕下方右鍵)



8. 畫面出現「是否使用新設定連線 (Do you want to connect with new settings)」，選擇「是 (Yes)」，按「OK」 



9. 當畫面出現 – 已連線 (Connected) – 及 WIFI 顯示燈亮起代表成功接駁。



完成後請點擊以下連結下載有關之驅動程式

用於 32 位元

[Windows 32bit] imageCLASS MF8280Cw MFDDrivers (UFR II / FAX / ScanGear)

<https://hk.canon/en/support/0100527601/5>

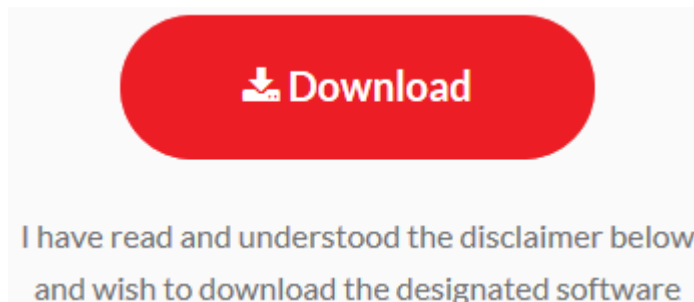
用於 64 位元

[Windows 64bit] imageCLASS MF8280Cw MFDDrivers (UFR II / FAX / ScanGear)

<https://hk.canon/en/support/0100527701/7>

下載及安裝步驟

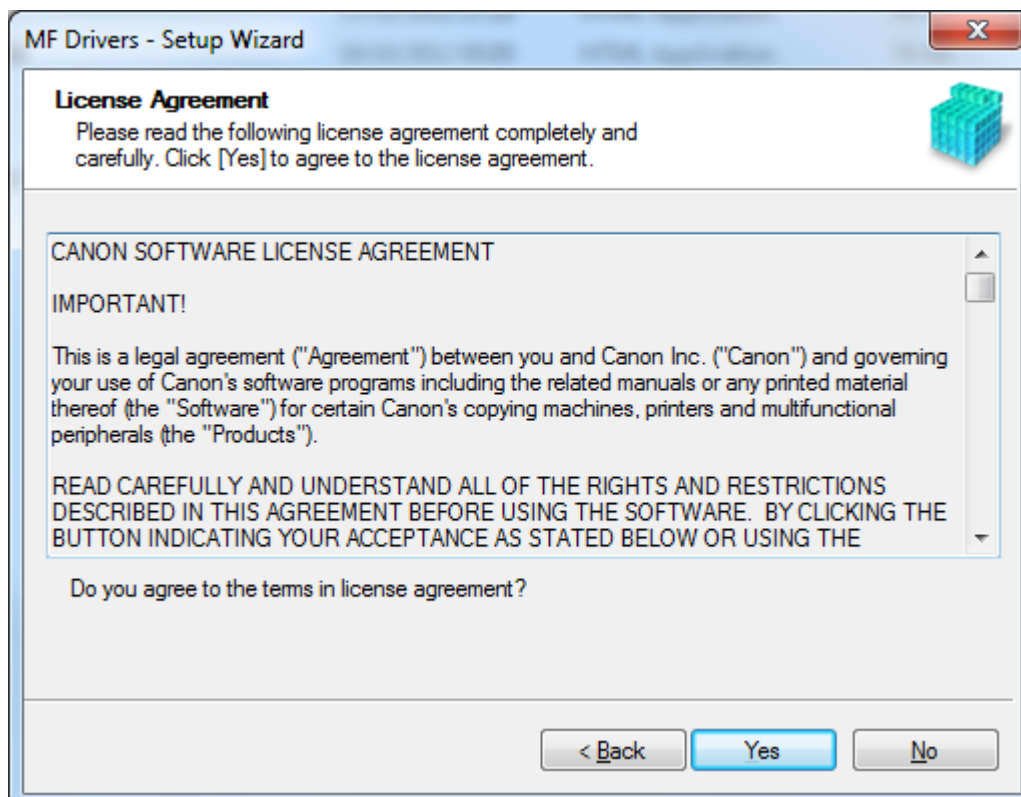
1. 按一下「Download」。下載完成後開啟該檔案安裝



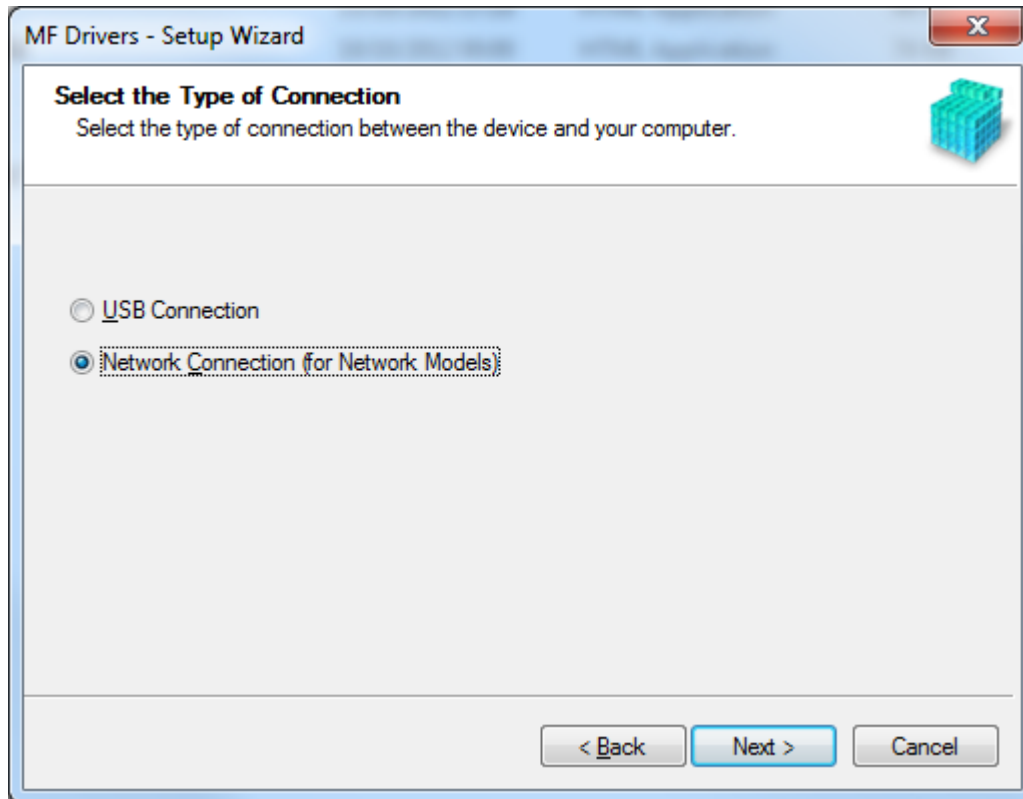
2. 按「Next」



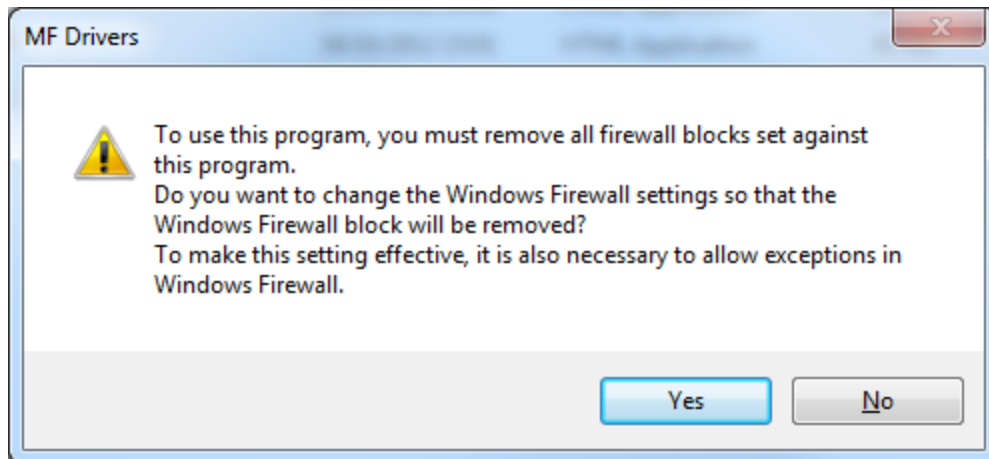
3. 按「Yes」



4. 選擇「Network Connection (for Network Models)」



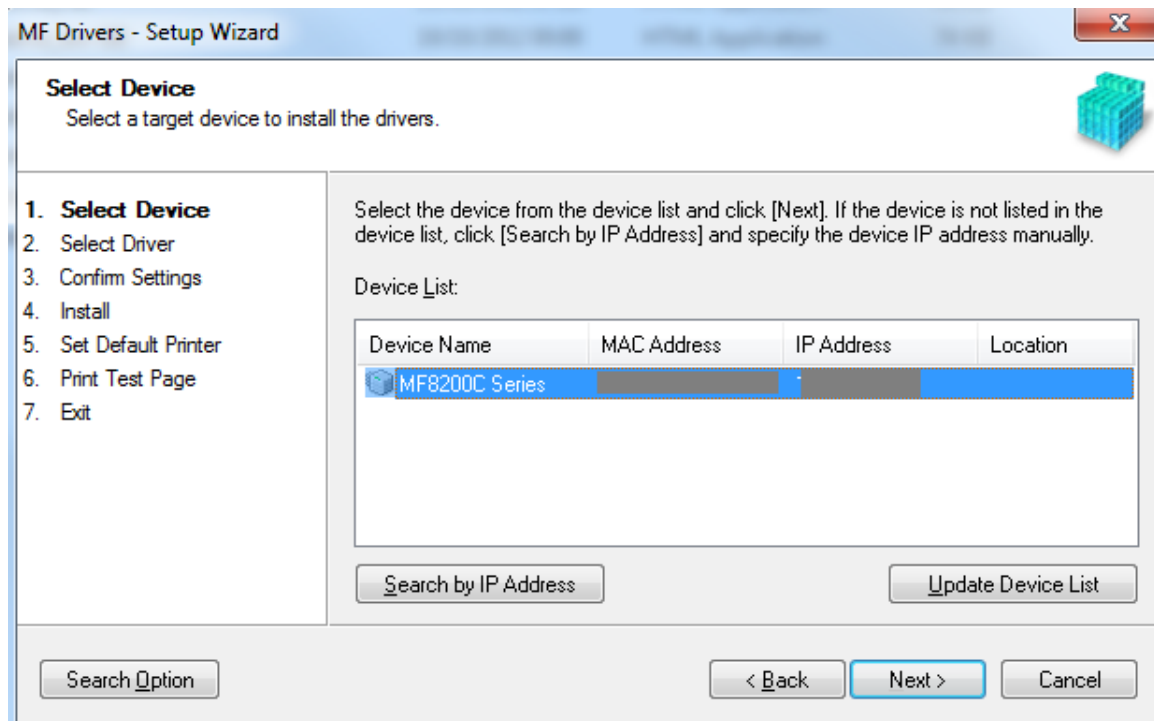
5. 確定已移除所有防火牆對此程式的封鎖設定



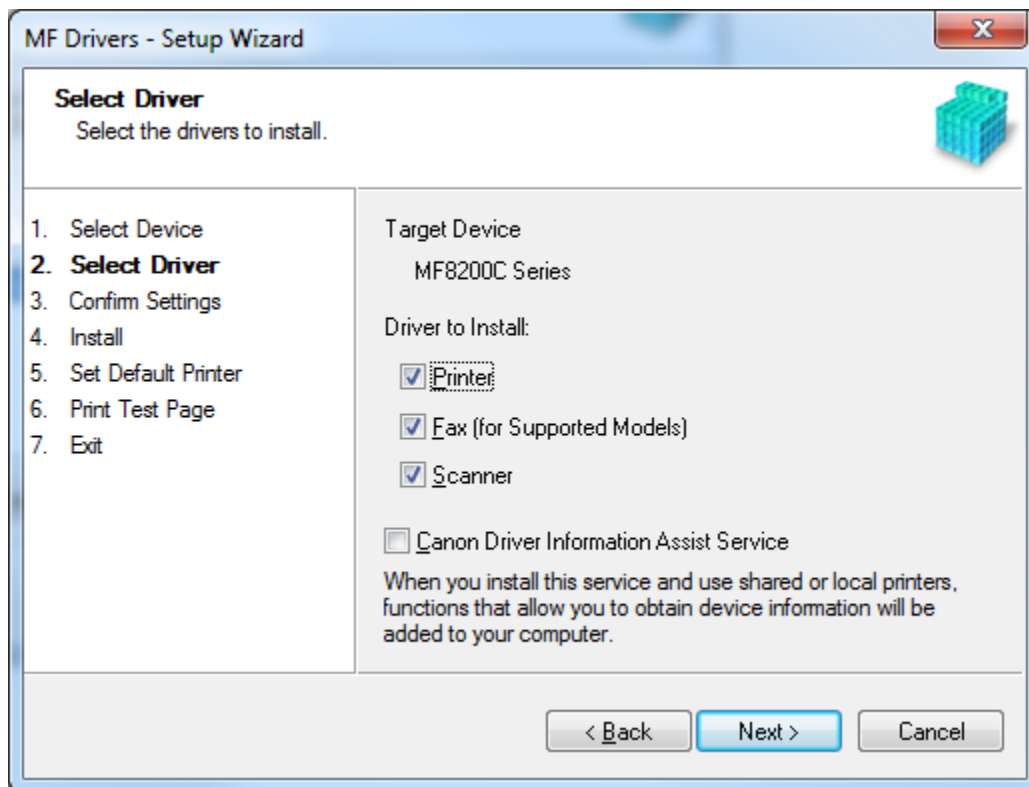
6. 搜尋裝置中



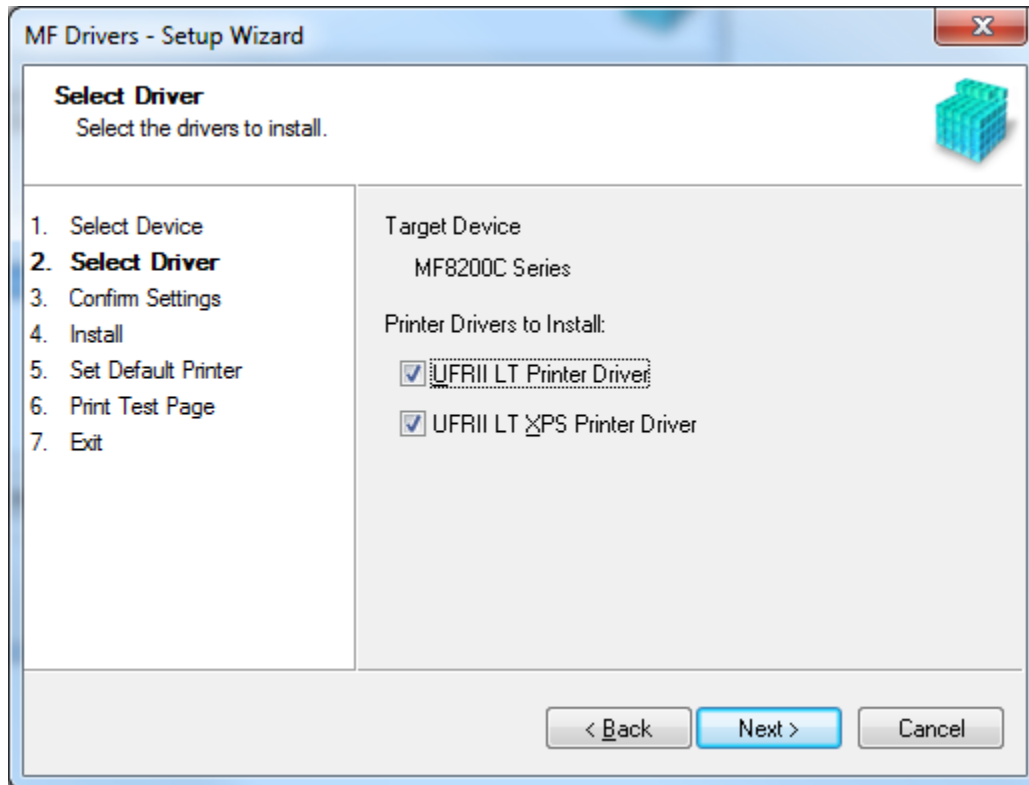
7. 按「Next」



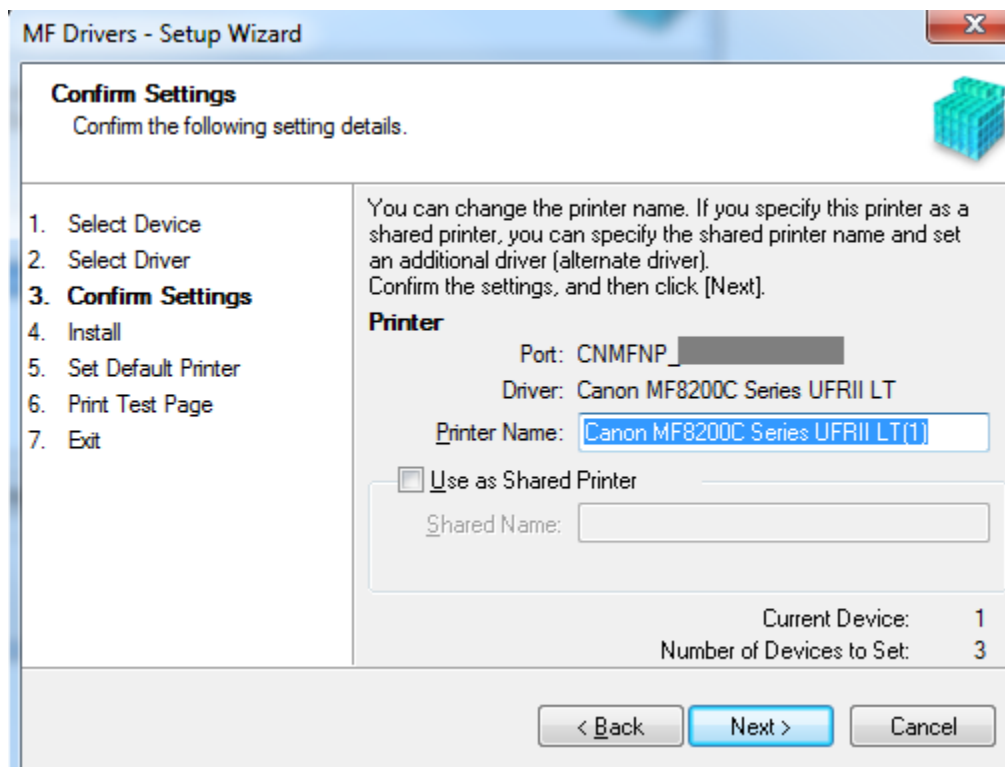
8. 按「Next」



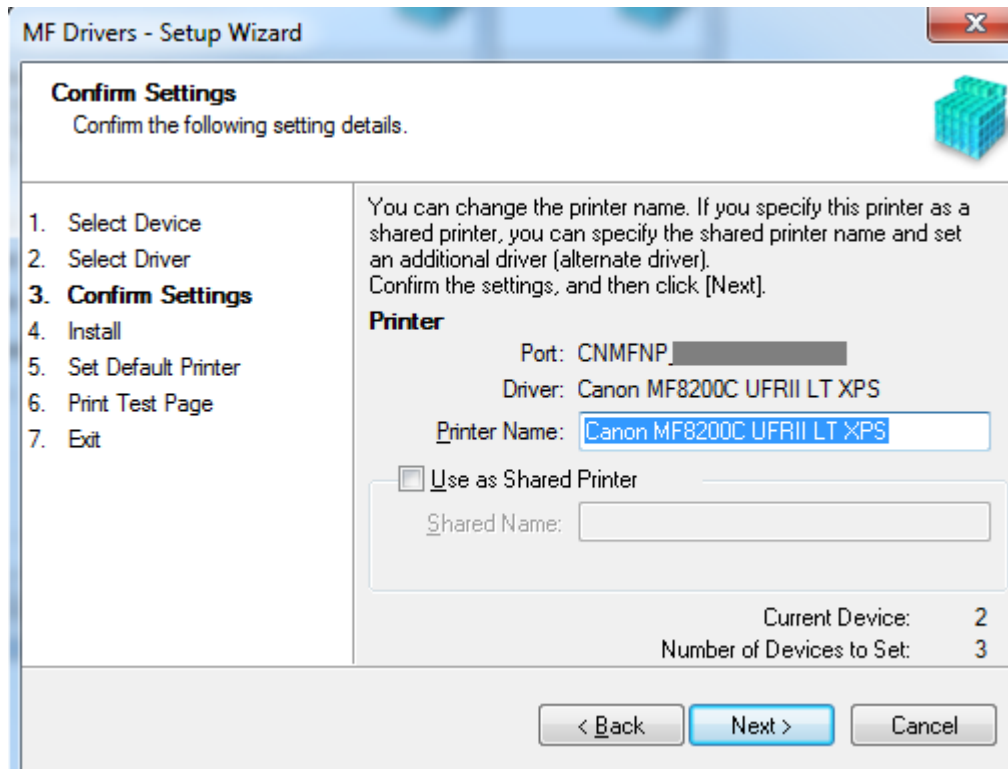
9. 按「Next」



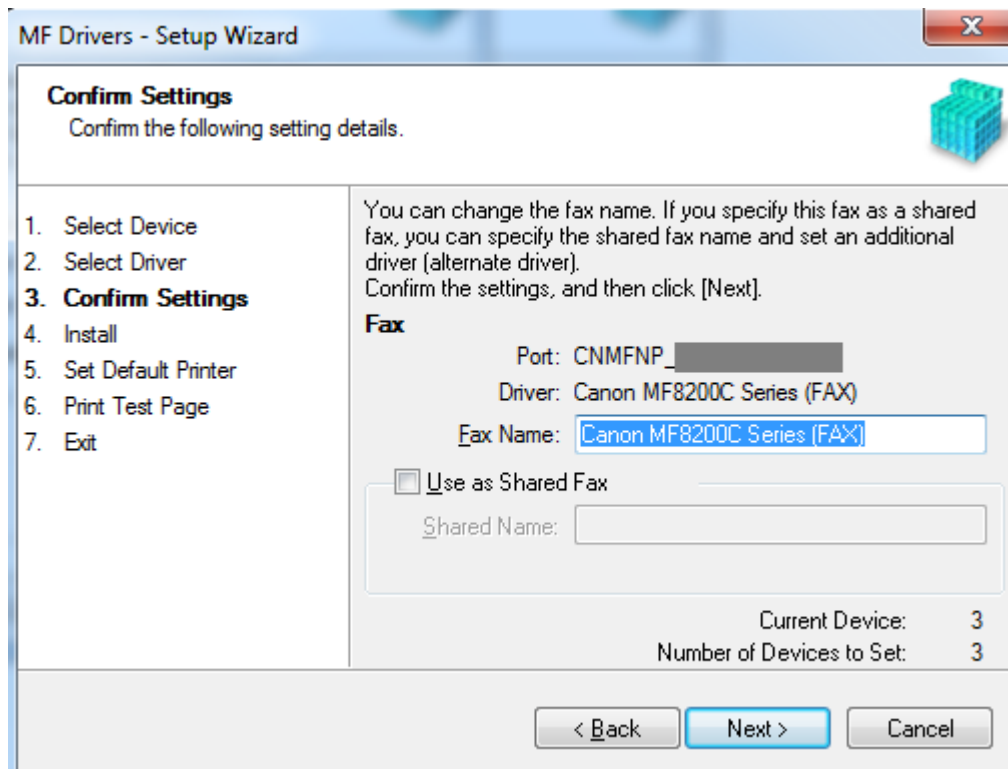
10. 按「Next」



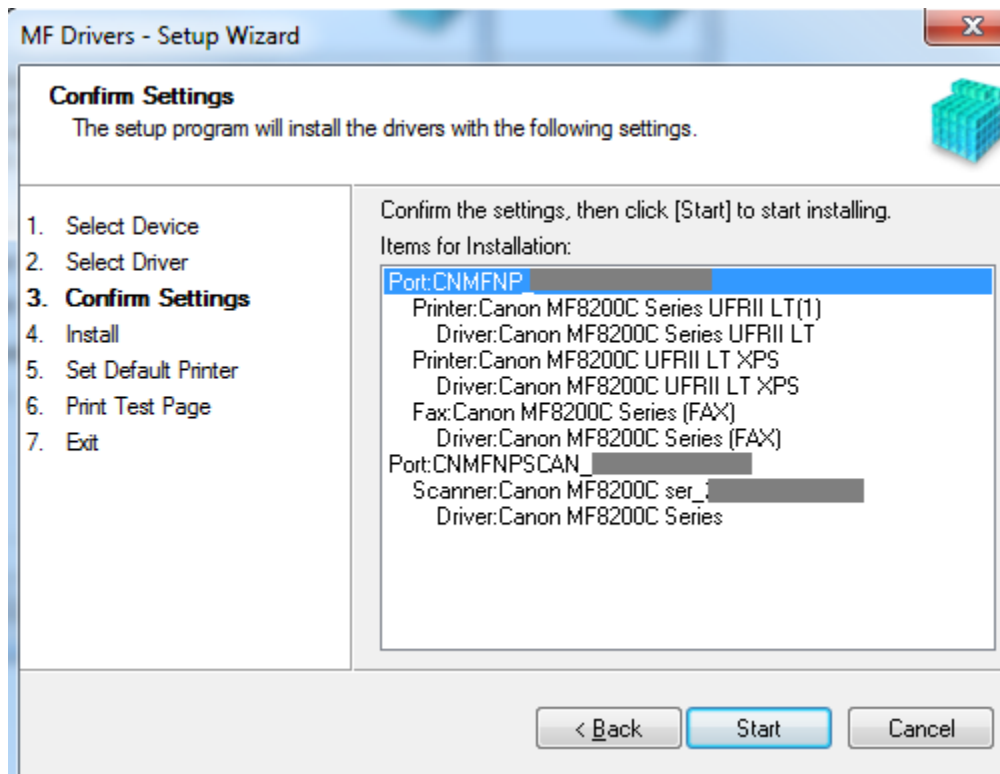
11. 按「Next」



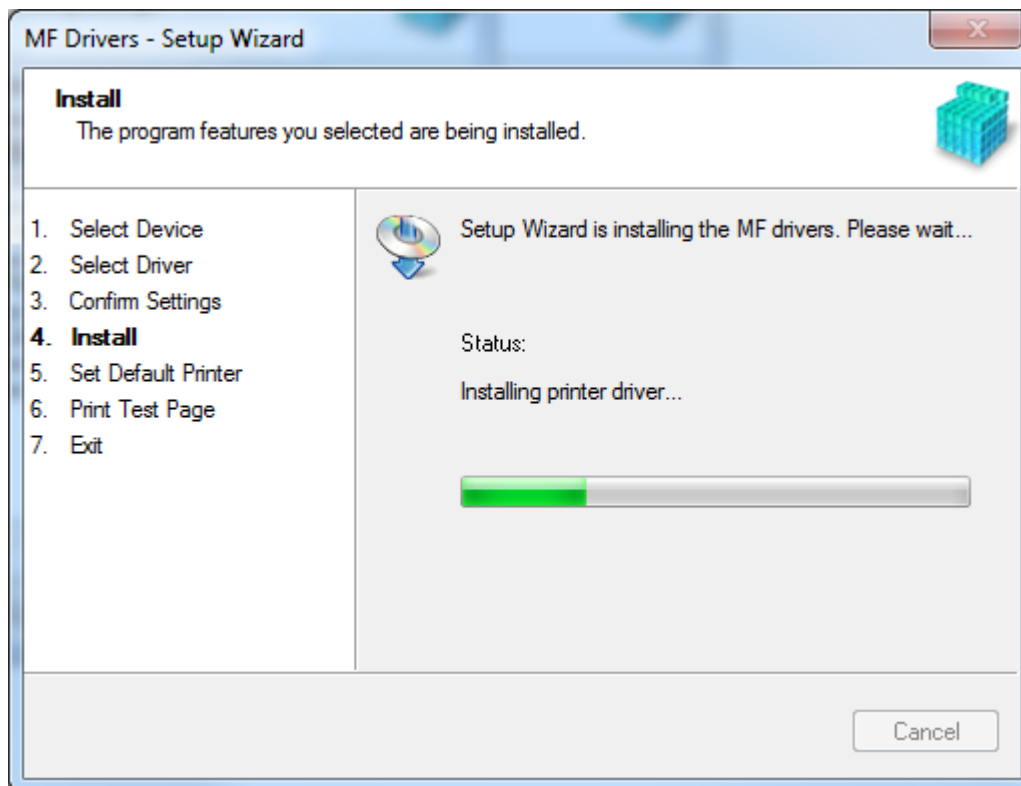
12. 按「Next」



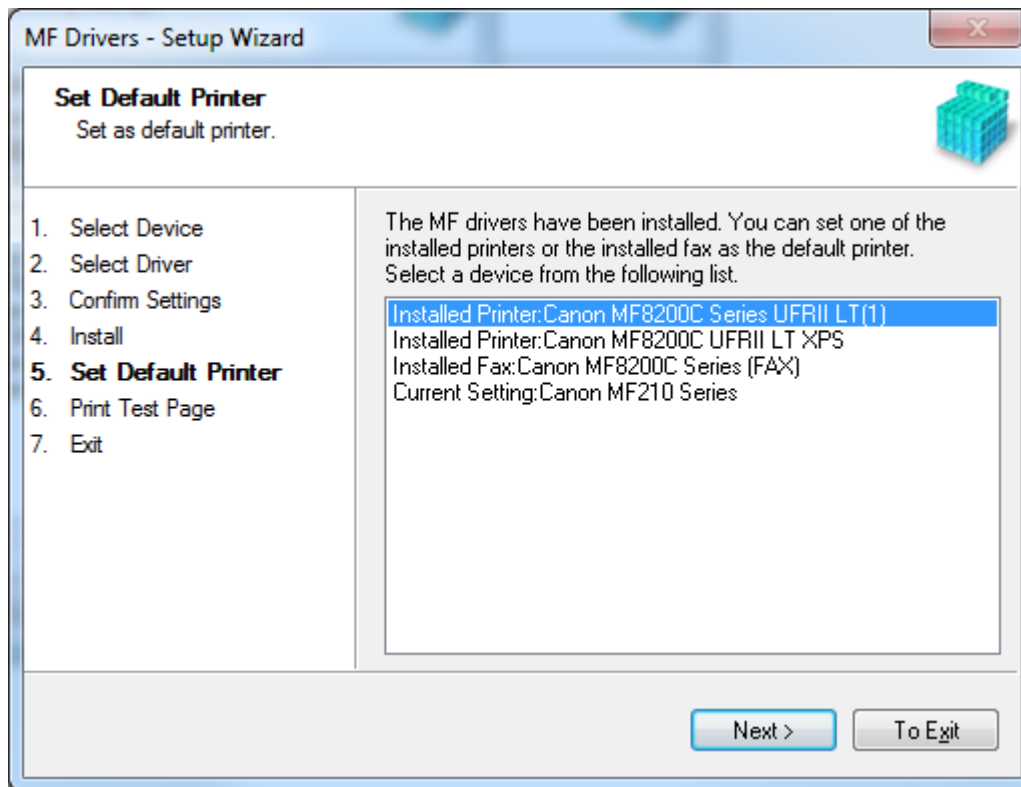
13. 按「Start」



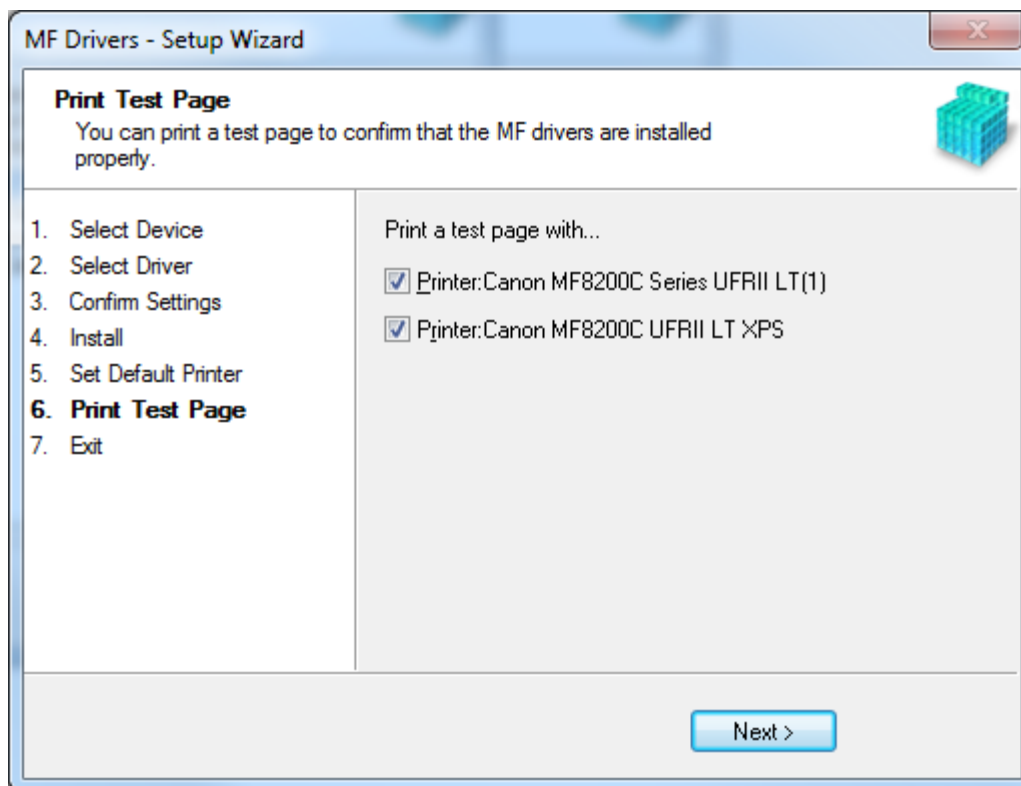
14. 安裝進行中



15. 按「Next」



16. 按「下一步」



17. 按「下一步」



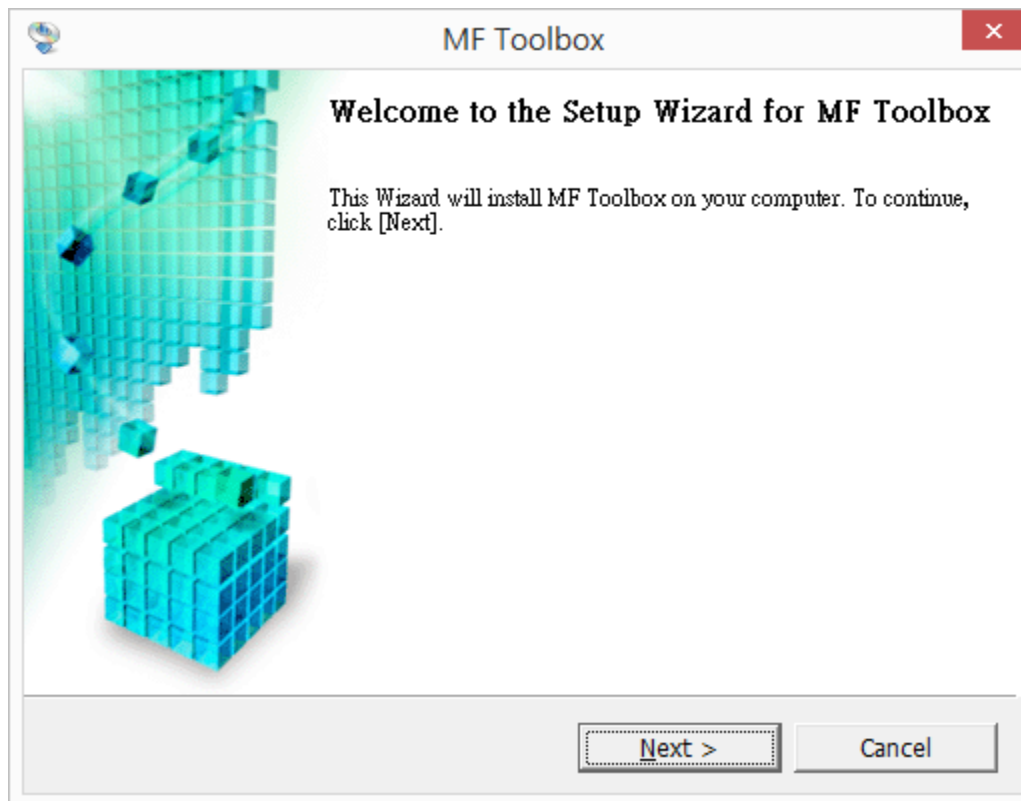
18. 點擊以下連結下載有關之軟件程式
[Windows 32bit & 64bit] Tool Box Ver.4.9.1.1.mf18
<https://hk.canon/en/support/0200155904/14>

下載及安裝步驟
按一下「Download」。下載完成後開啟該檔案安裝

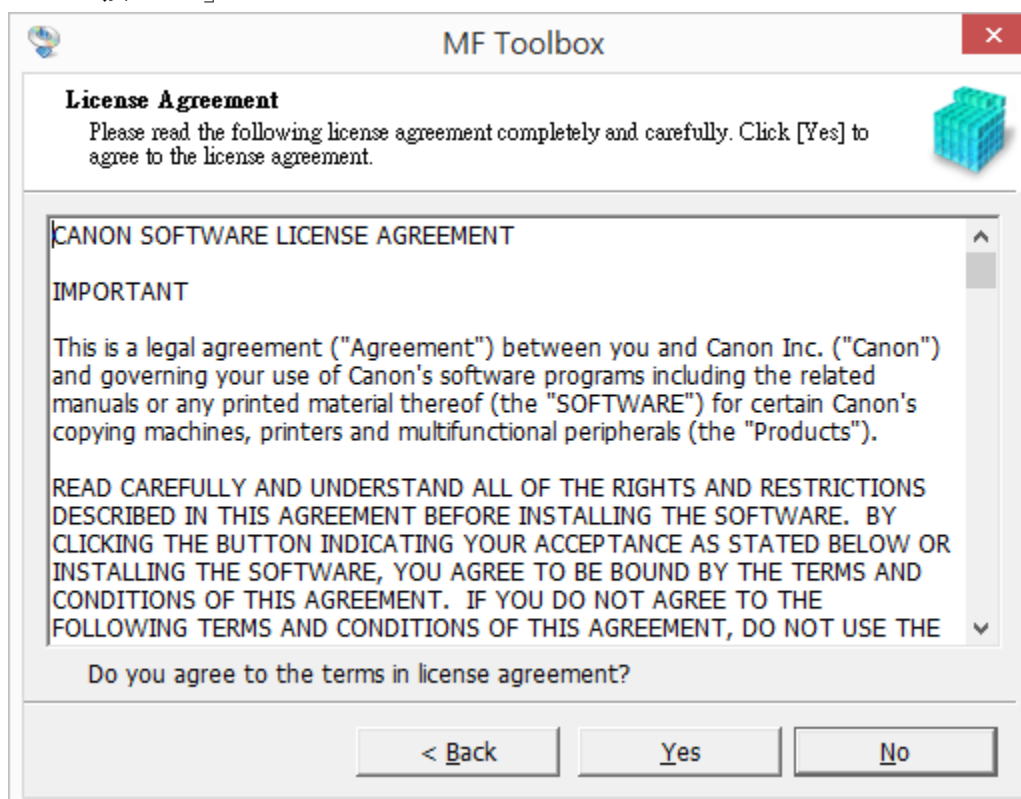
 **Download**

I have read and understood the disclaimer below
and wish to download the designated software

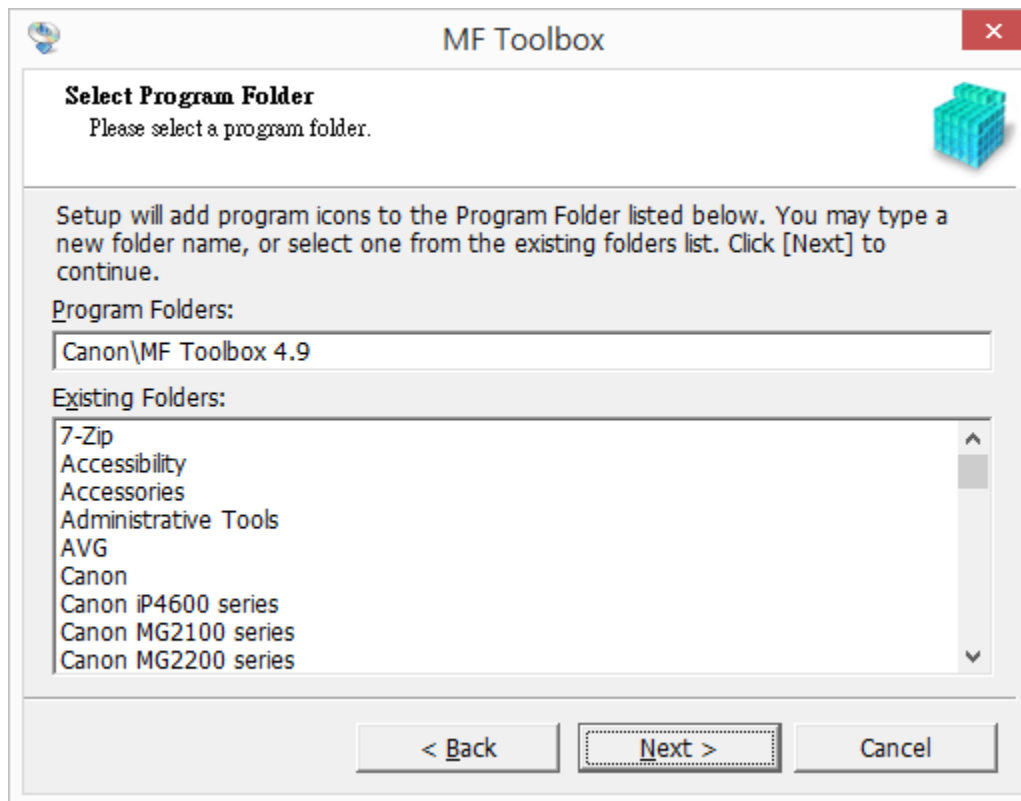
19. 按「Next」



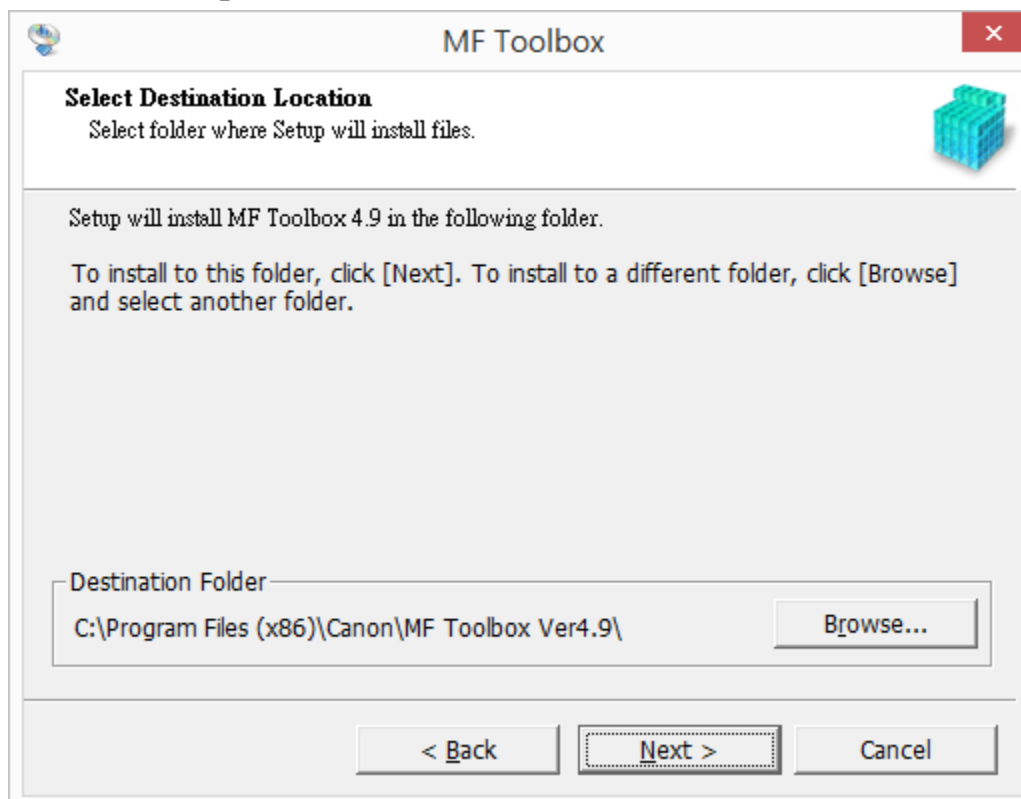
20. 按「Yes」



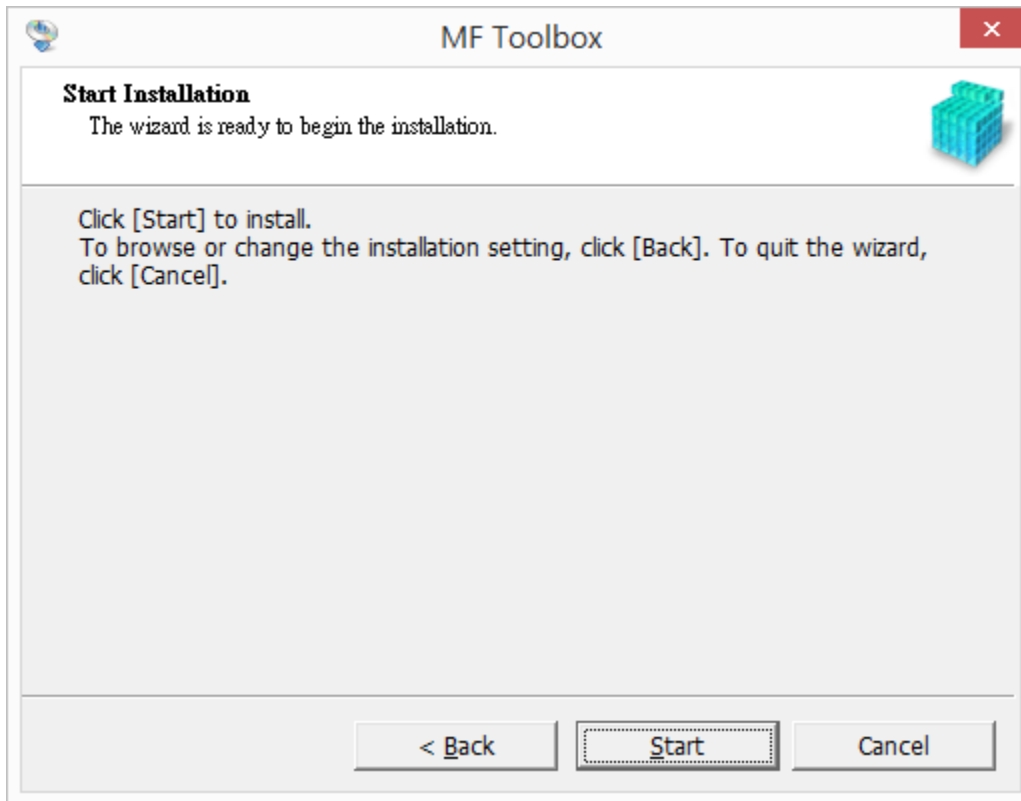
21. 按「Next」



22. 按「Next」



23. 按「Start」



24. 按「Exit」

