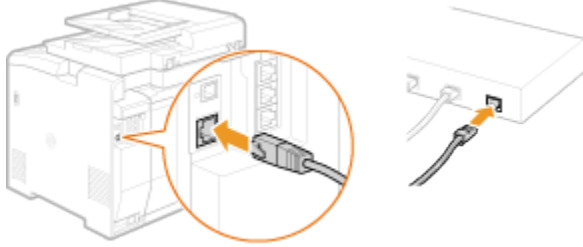






MF8580Cw 安裝 Win 8.1 透過有線 LAN 連線連接印表機之驅動程式步驟

先將網絡線接駁至打印機 LAN 插頭:



1. 按「功能表 (Menu)」 .
2. 選擇「網路設定 (Network Settings)」，按「OK」 .
3. 選擇「選擇有線/無線區域網絡 (Select Wired/Wireless LAN)」，按「OK」 .
4. 選擇「有線區域網絡 (Wired LAN)」，按「OK」



5. 按「功能表 (Menu)」 .

完成後請點擊以下連結下載有關之驅動程式

用於 32 位元

[Windows 32bit] imageCLASS MF8580Cdw MFDDrivers (UFR II / PCL / FAX / ScanGear)

<https://hk.canon/en/support/0100529001/5>

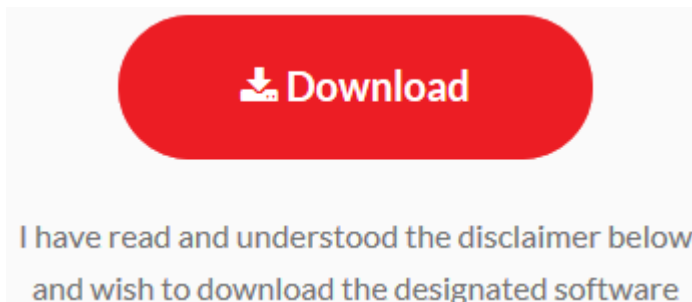
用於 64 位元

[Windows 64bit] imageCLASS MF8580Cdw MFDDrivers (UFR II / PCL / FAX / ScanGear)

<https://hk.canon/en/support/0100529101/7>

下載及安裝步驟

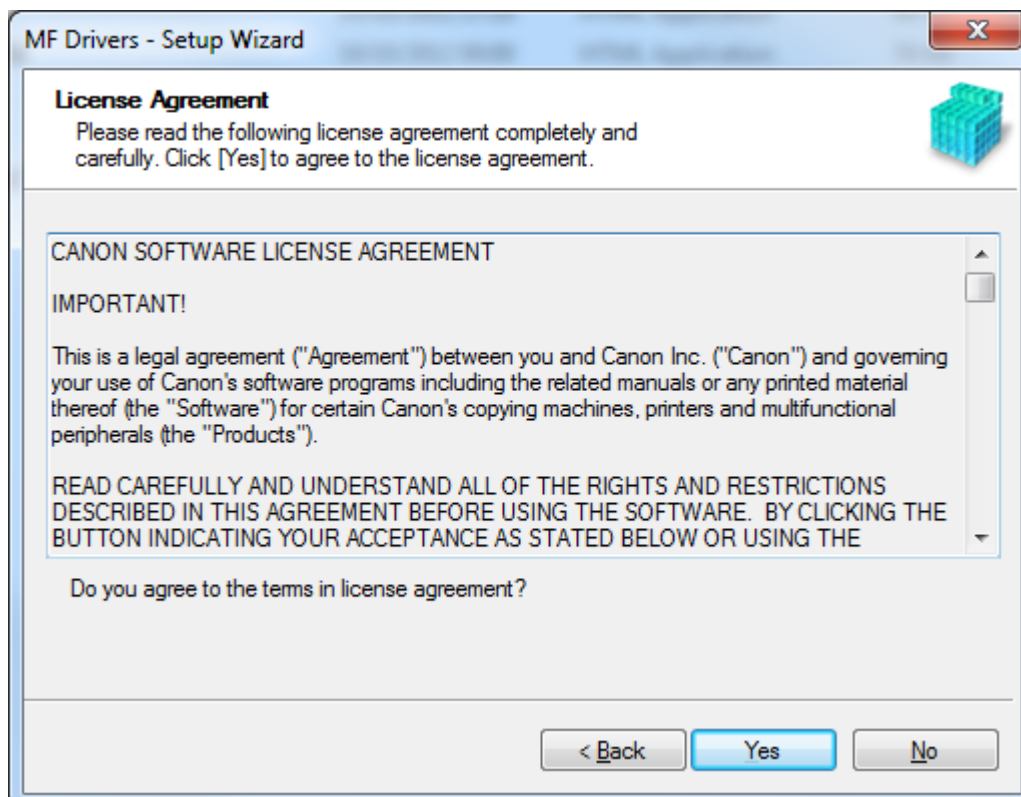
1. 按一下「Download」。下載完成後開啟該檔案安裝



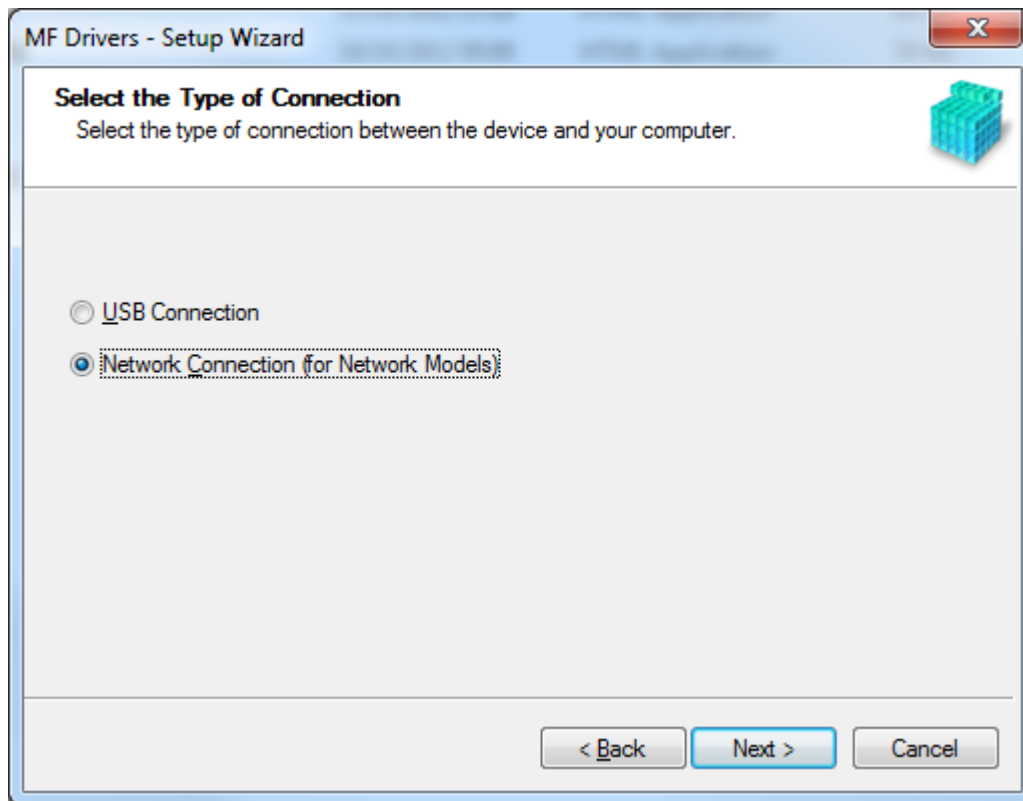
2. 按「Next」



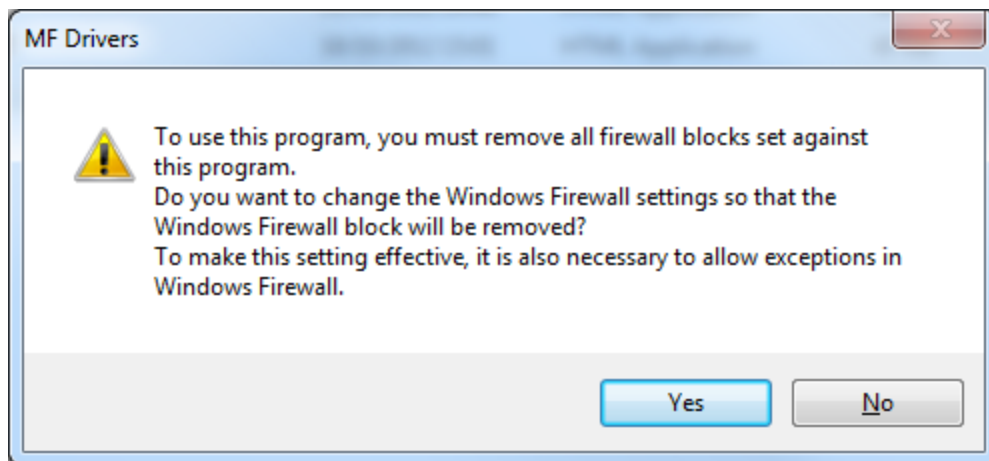
3. 按「Yes」



4. 選擇「Network Connection (for Network Models)」



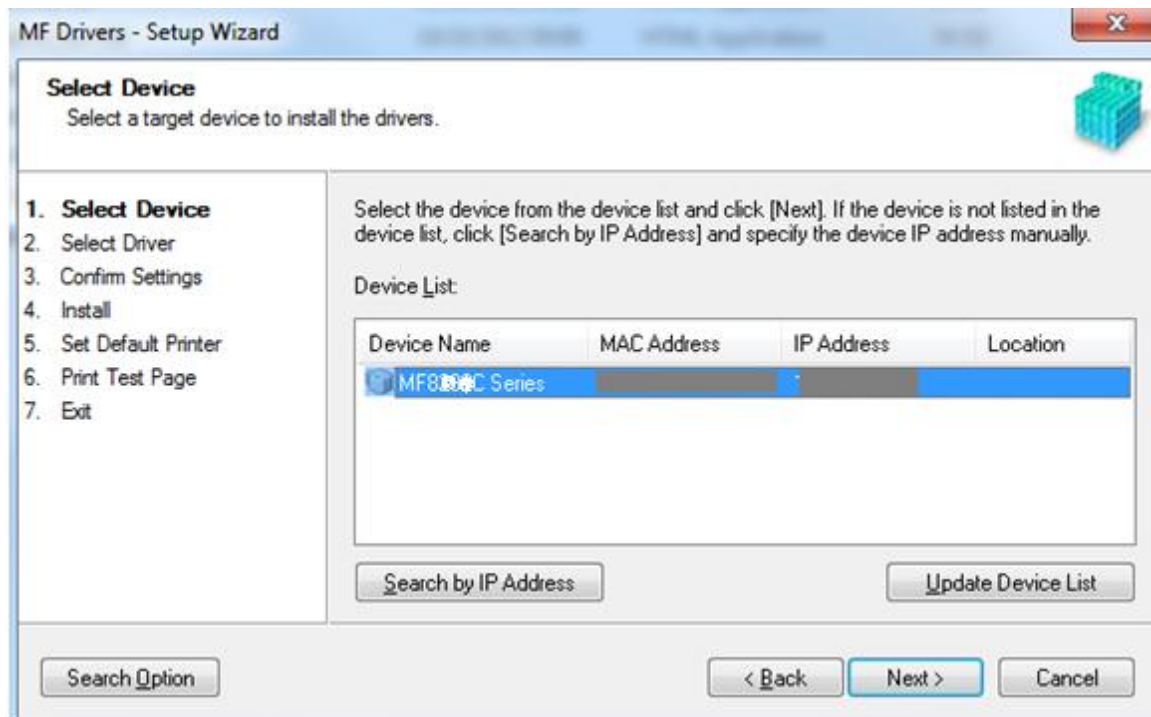
5. 確定已移除所有防火牆對此程式的封鎖設定



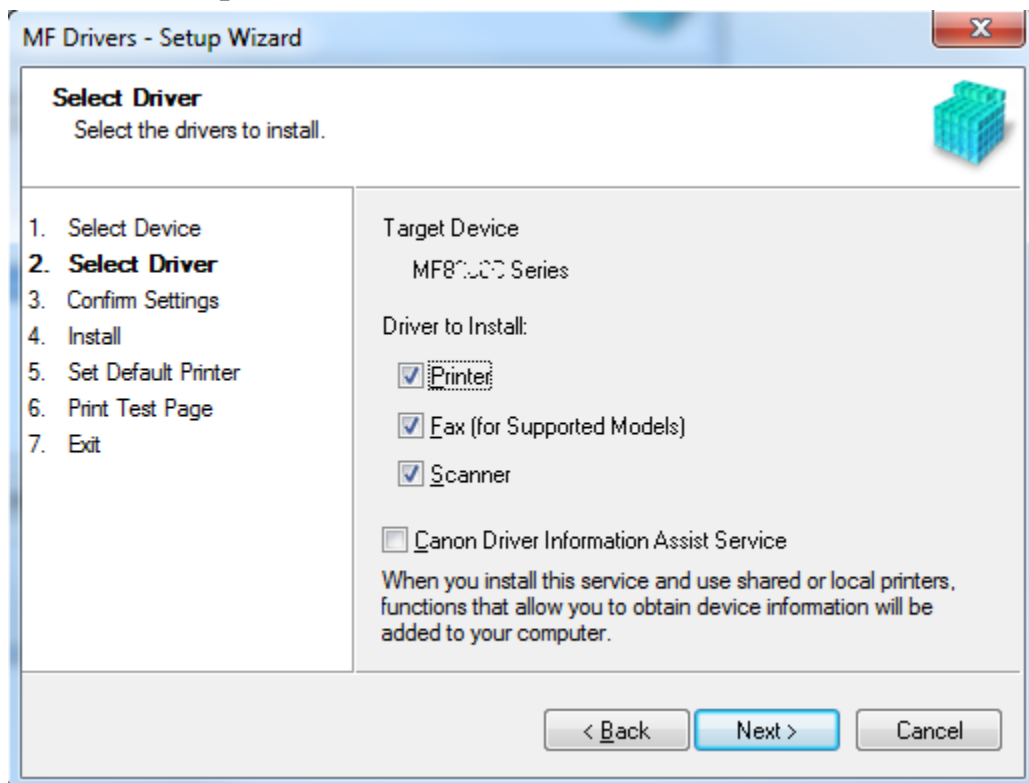
6. 搜尋裝置中



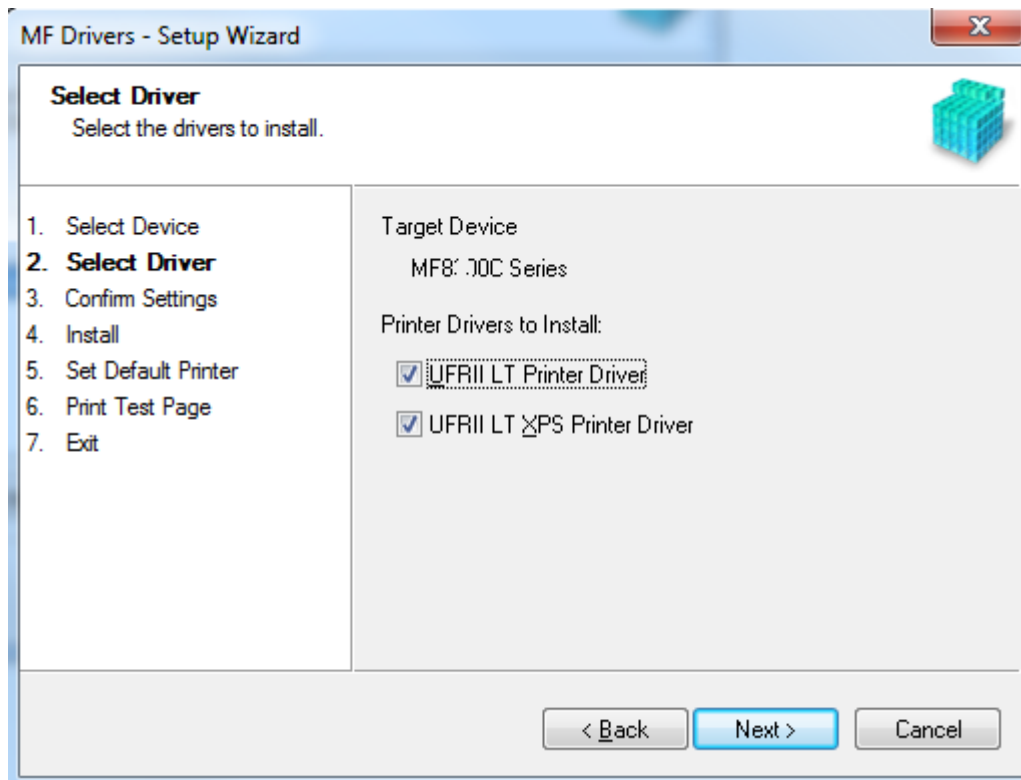
7. 按「Next」



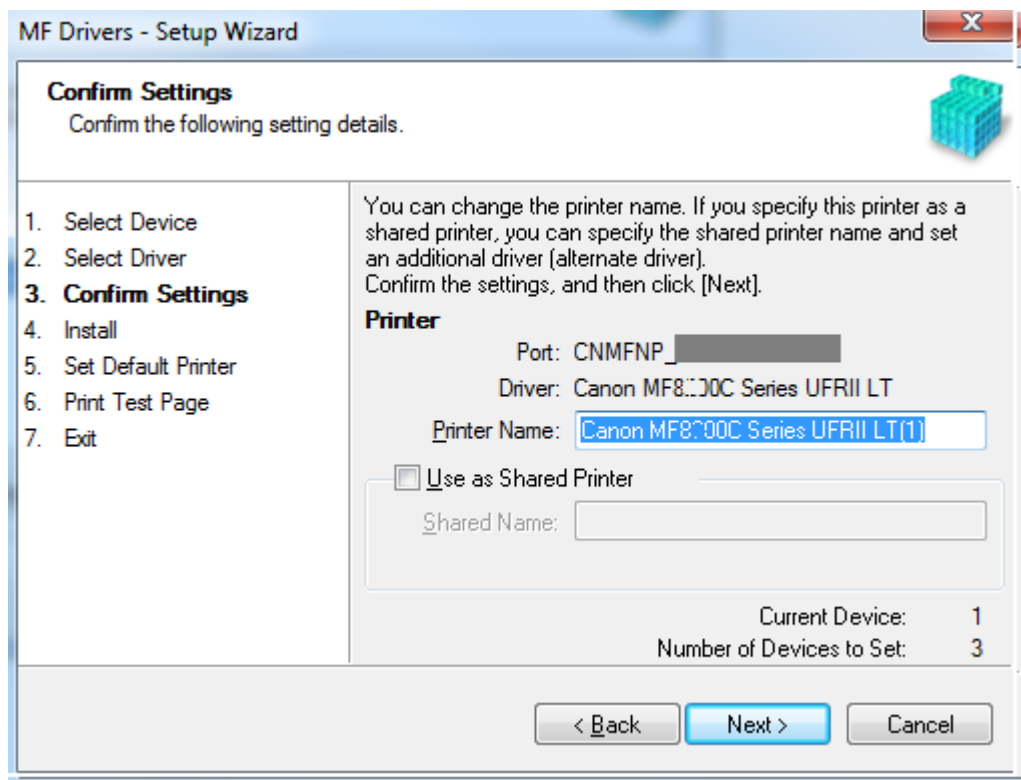
8. 按「Next」



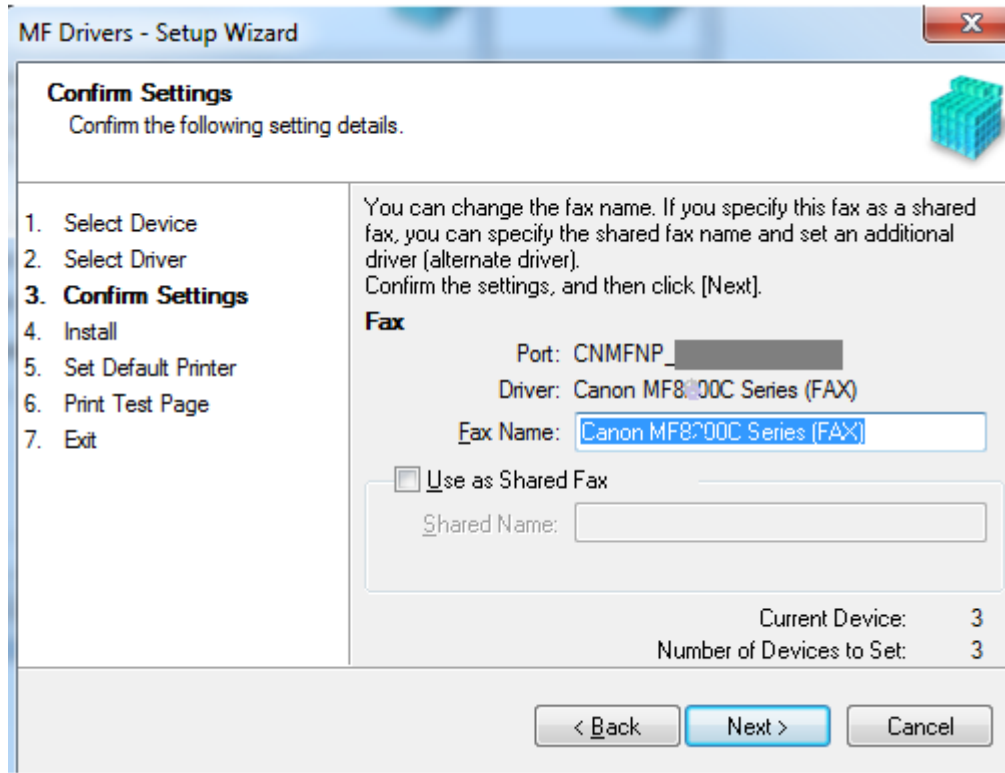
9. 按「Next」



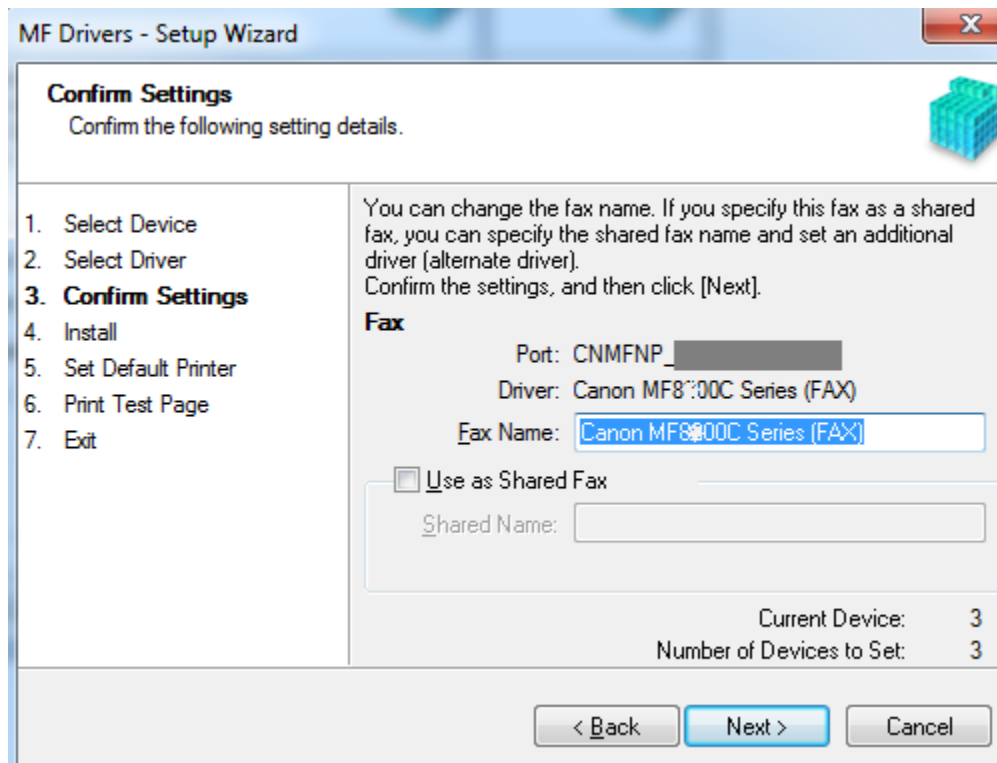
10. 按「Next」



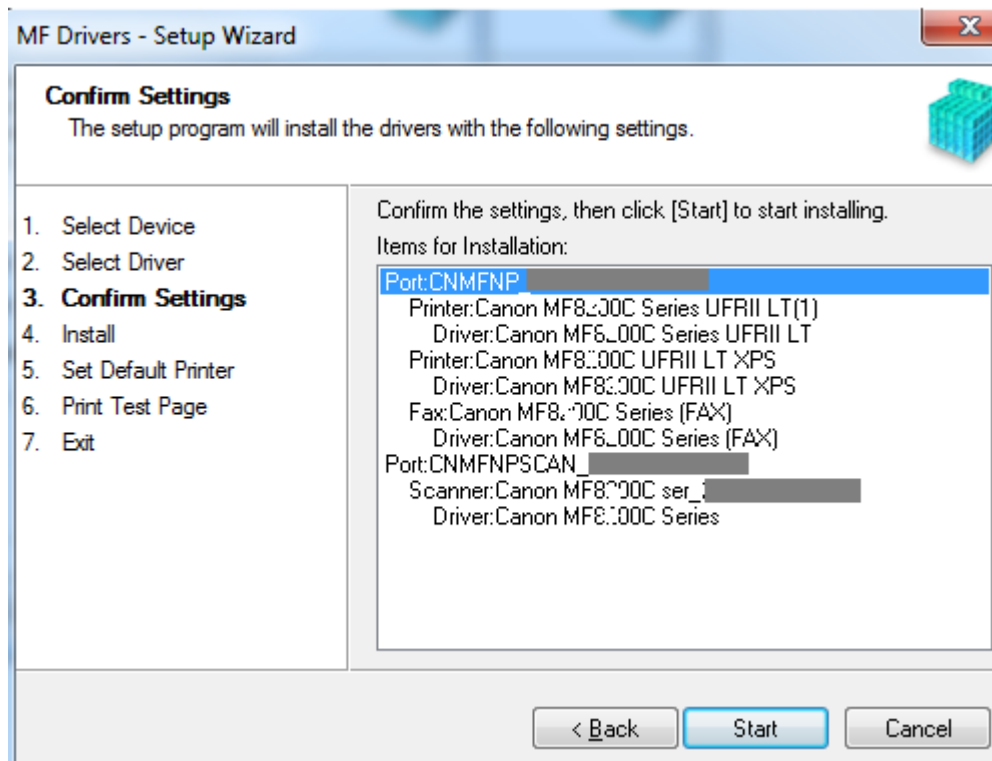
11. 按「Next」



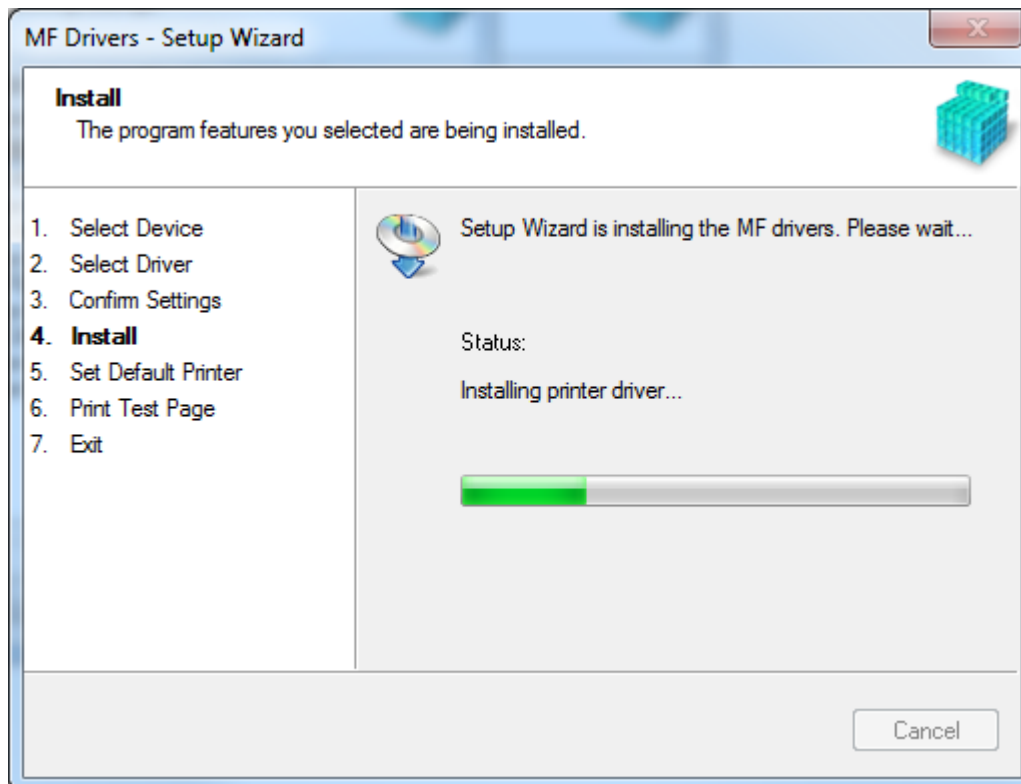
12. 按「Next」



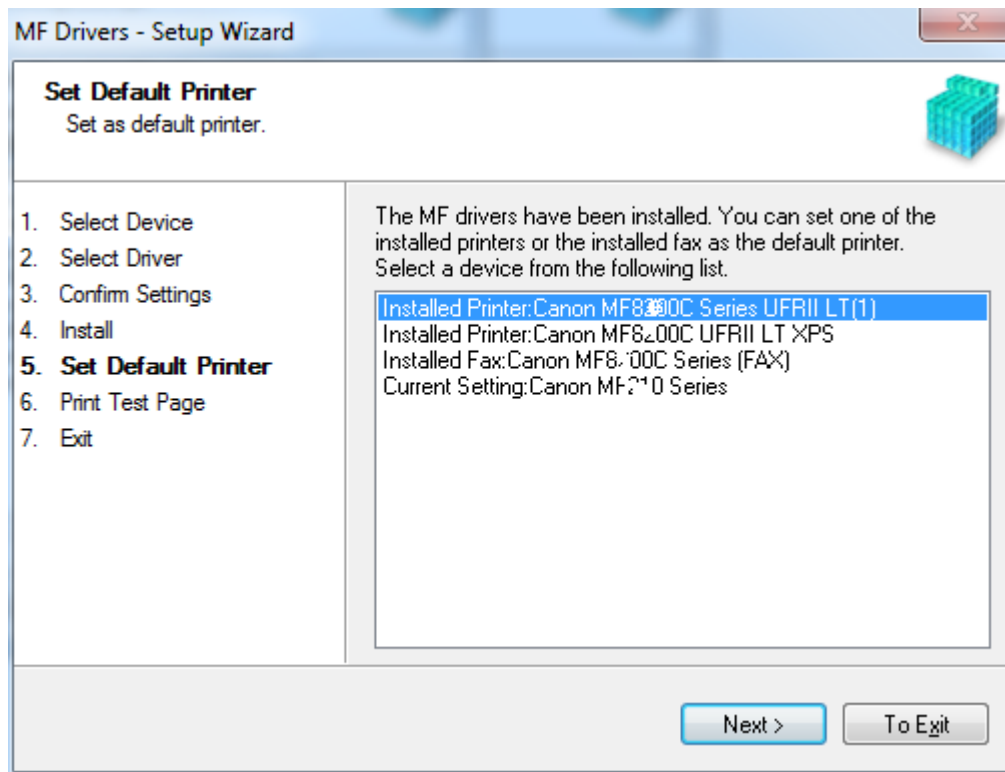
13. 按「Start」



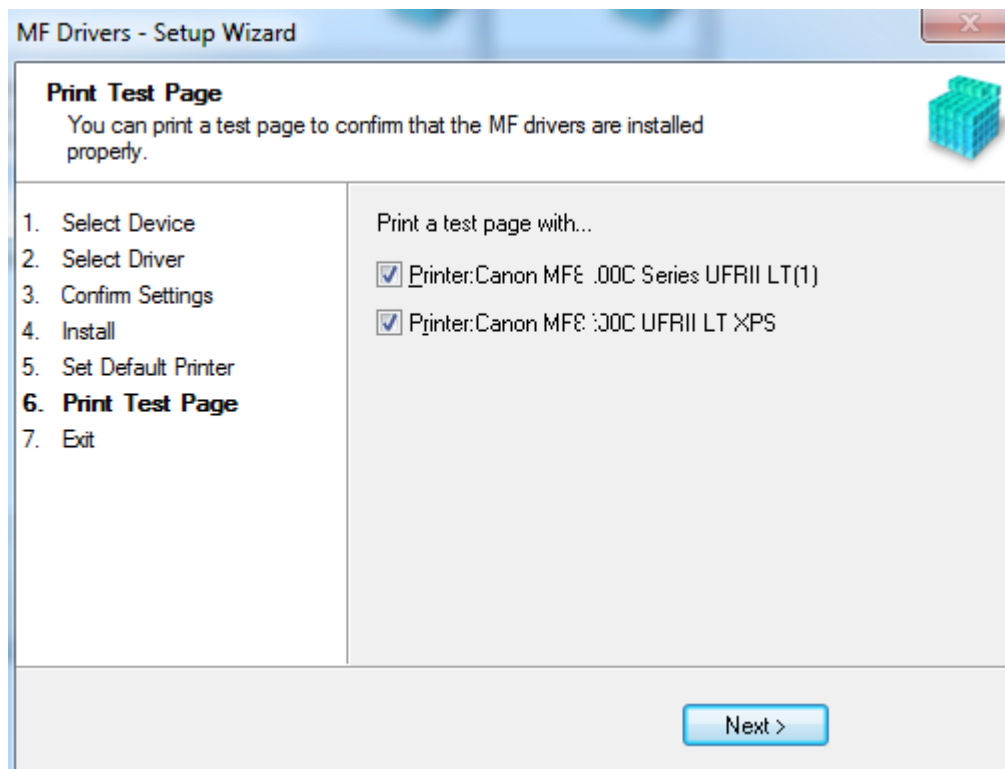
14. 安裝進行中



15. 按「Next」



16. 按「下一步」



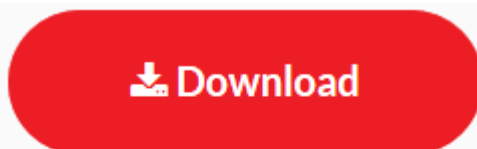
17. 按「下一步」



18. 點擊以下連結下載有關之軟件程式
[Windows 32bit & 64bit] Tool Box Ver.4.9.1.1.mf17
<https://hk.canon/en/support/0200155904/14>

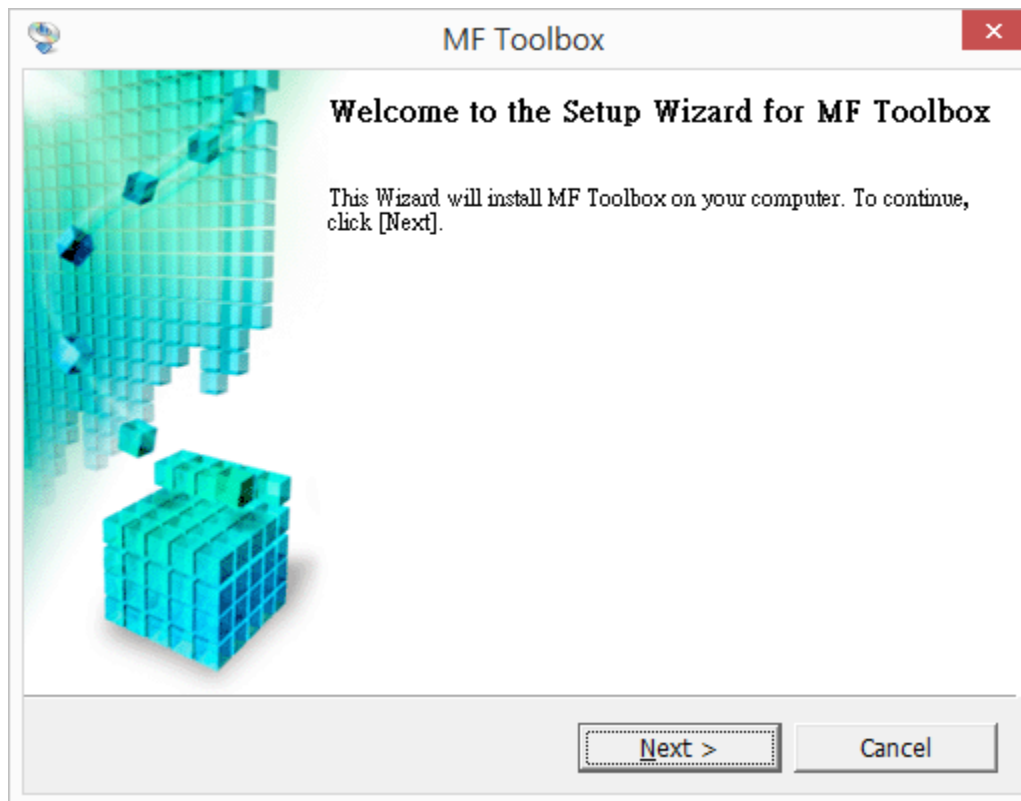
下載及安裝步驟

按一下「Download」。下載完成後開啟該檔案安裝

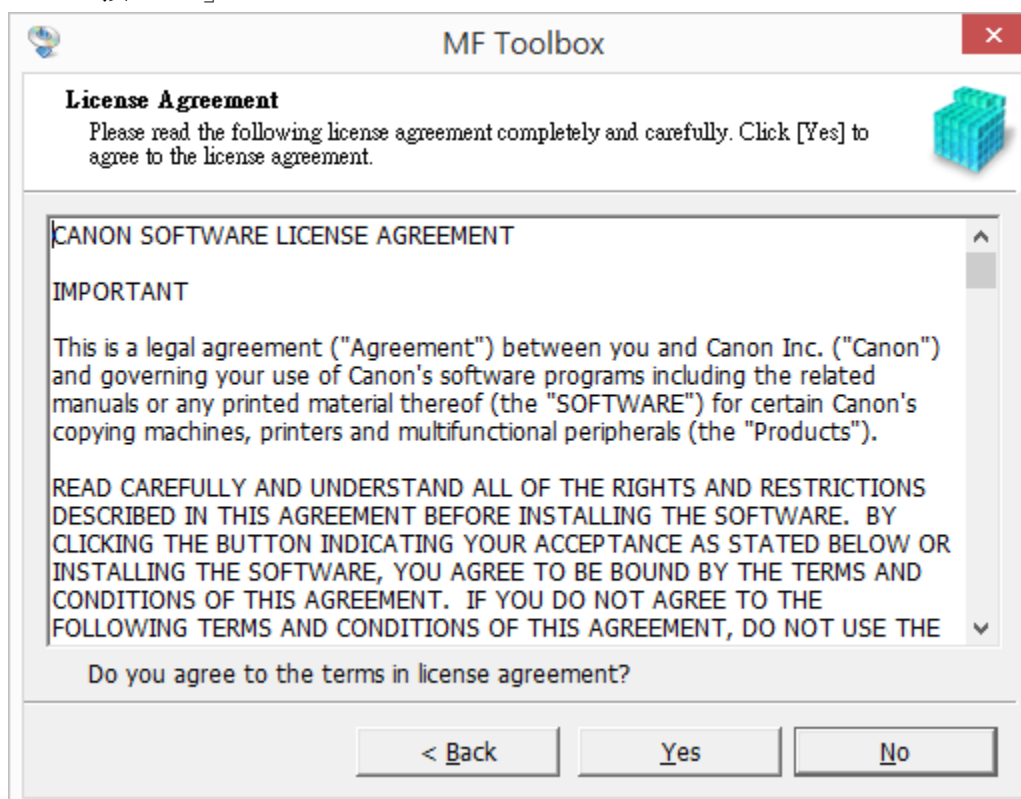


I have read and understood the disclaimer below
and wish to download the designated software

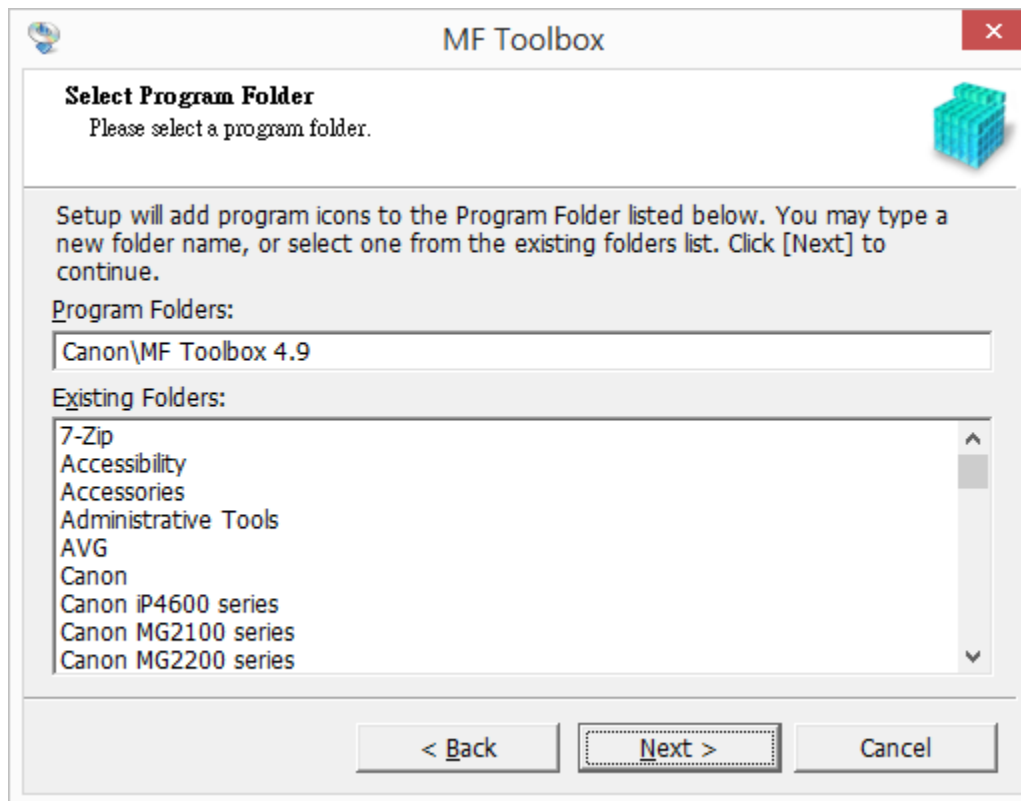
19. 按「Next」



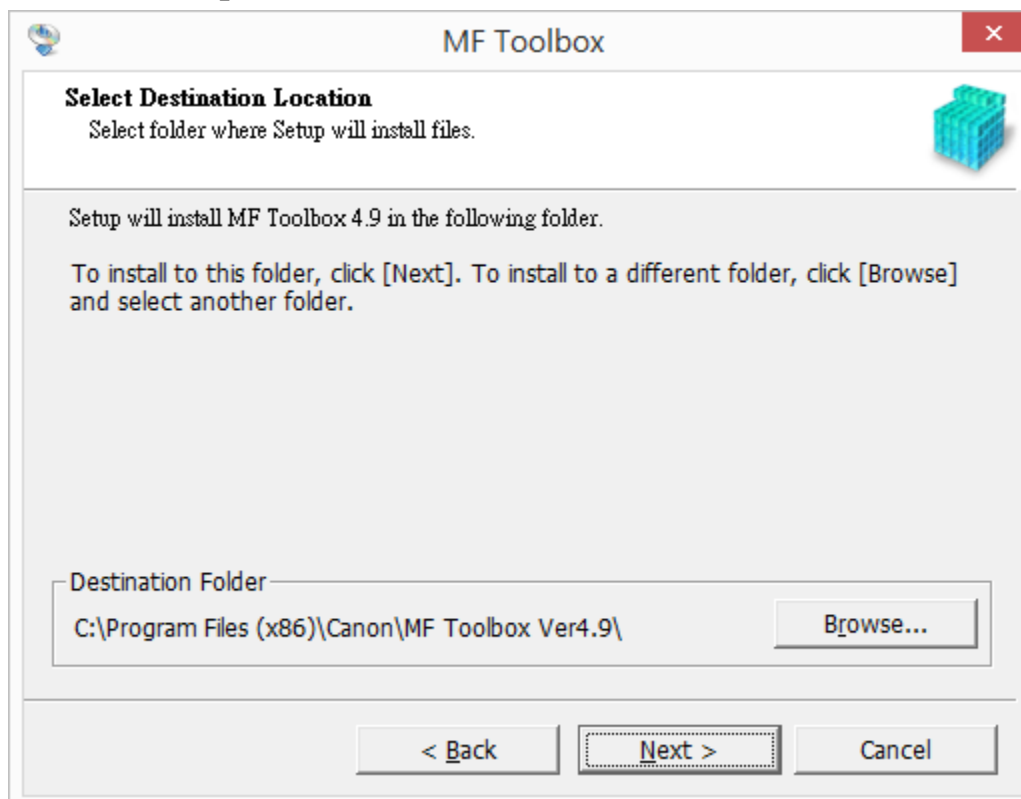
20. 按「Yes」



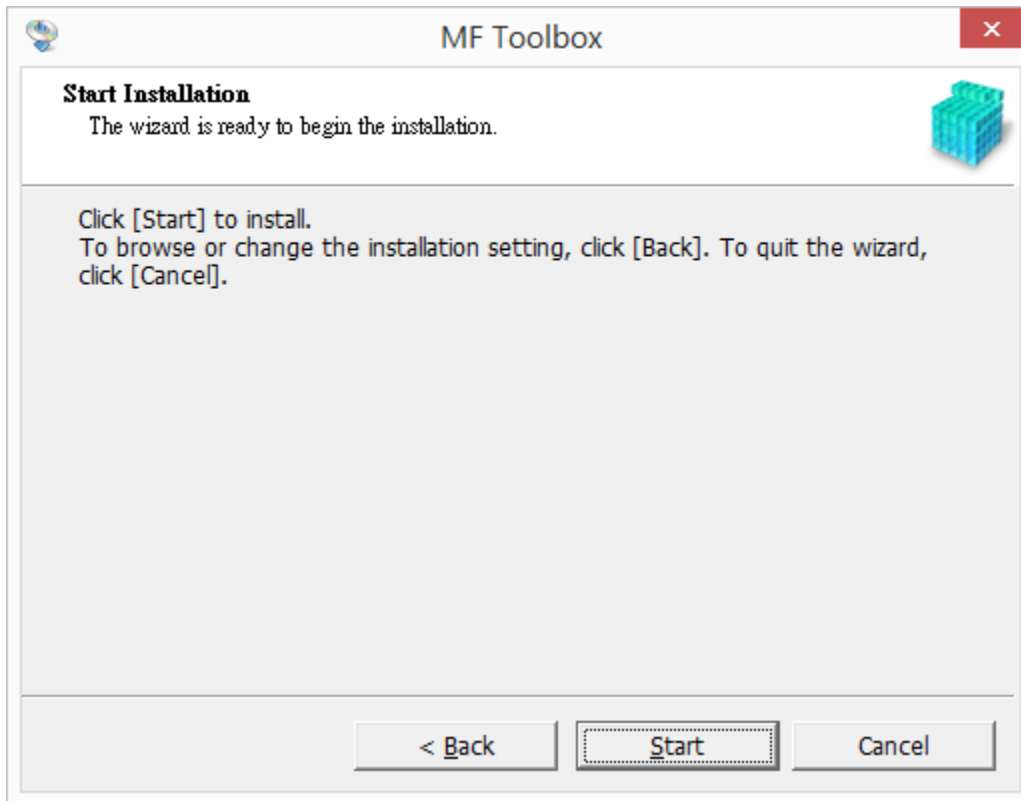
21. 按「Next」



22. 按「Next」



23. 按「Start」



24. 按「Exit」

