

MG6470 安裝 MAC OS X 透過 USB 連線連接印表機之驅動程式步驟

****注意: 安裝驅動程式前請勿接駁 USB 線，以免系統發生錯誤****

點擊以下連結下載有關之驅動程式

https://hk.canon/hong-kong/zh_HK/support/0100541001/2

下載及安裝步驟

1. 按一下「下載」。下載完成後開啟該檔案



2. 按「Setup」



3. 按「Next」



4. 你的電腦可能需要你輸入密碼才可進行安裝動作



5. 按「USB Connection」

1-1 Connection Method Selection

Select a method to connect the printer.



Network Connection

Select this option when using the printer with a computer over your **Network** (LAN), or when sharing the printer with other computers. An **access point** (or **router**) is required.



USB Connection

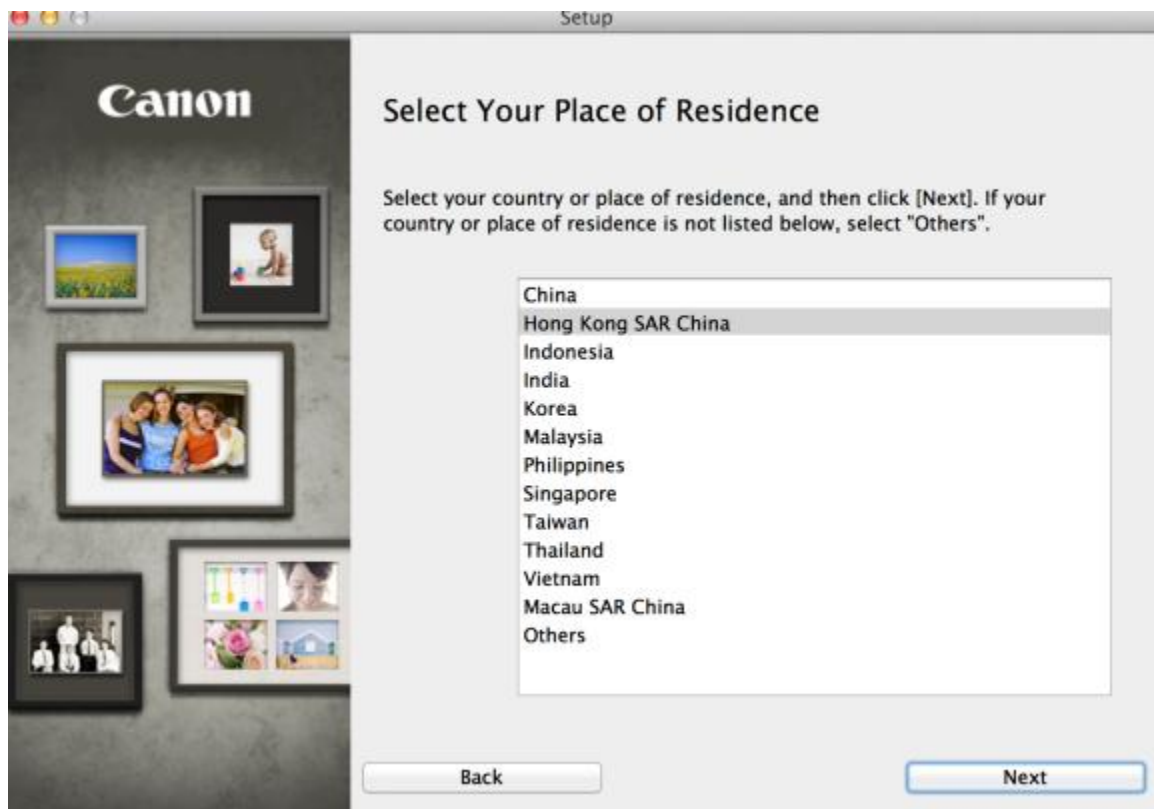
Select this option when using the printer by connecting it to the computer with a **USB** cable. After software installation, the procedure to connect your computer with the printer appears. Click "USB Connection," then wait until the next screen appears.

Troubleshooting

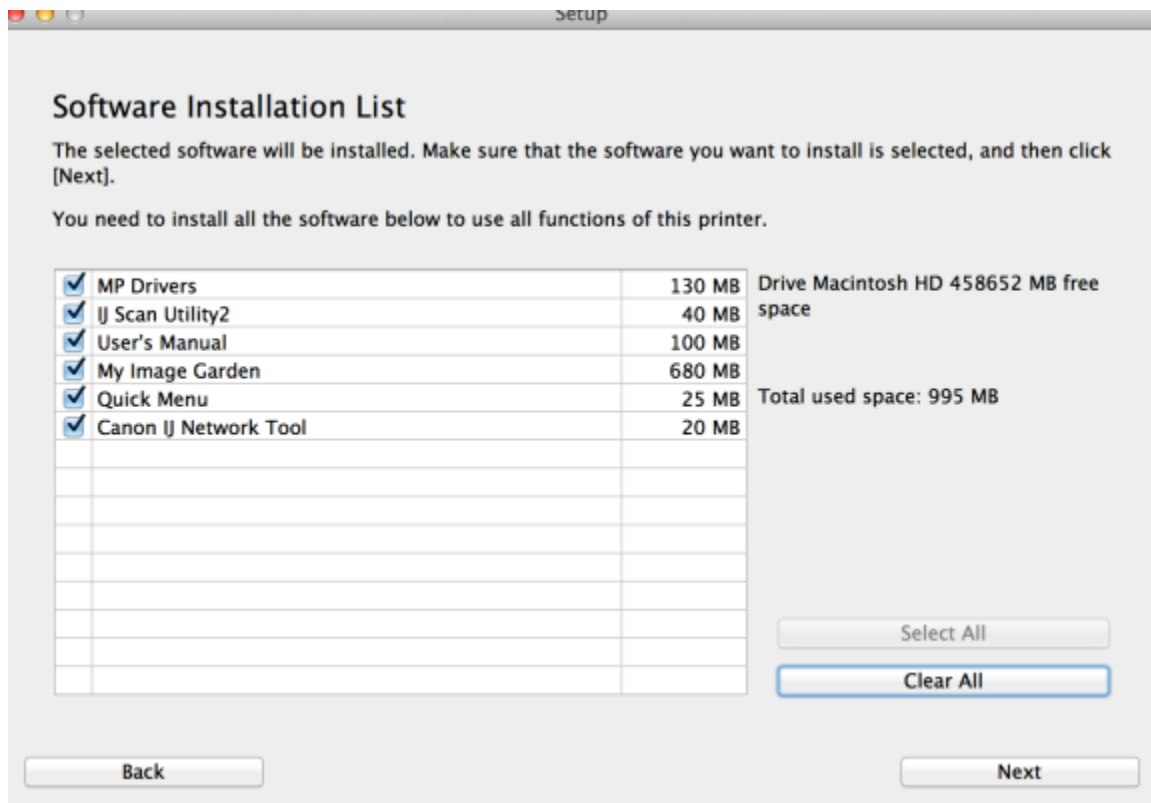
Solutions for errors, reference information, etc. appear here.

For details on how to use this guide, click [here](#)

6. 選擇居住地按「Next」



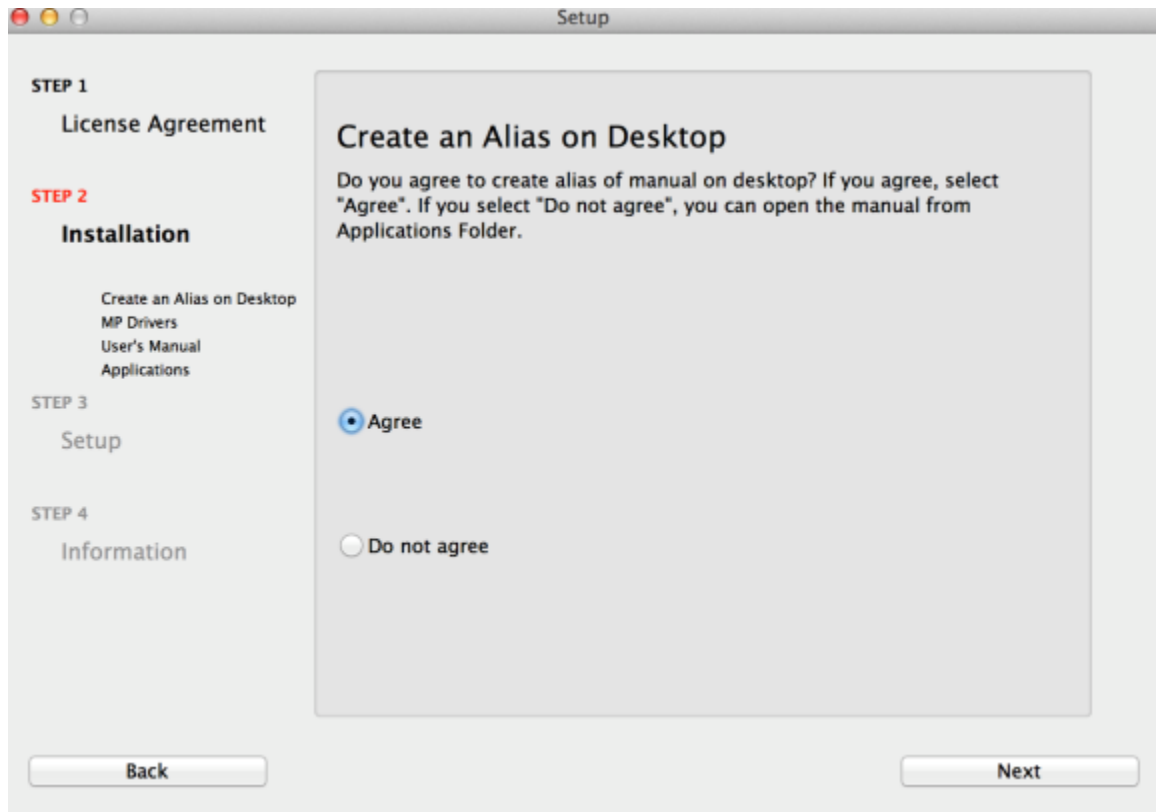
7. 選擇所需軟件



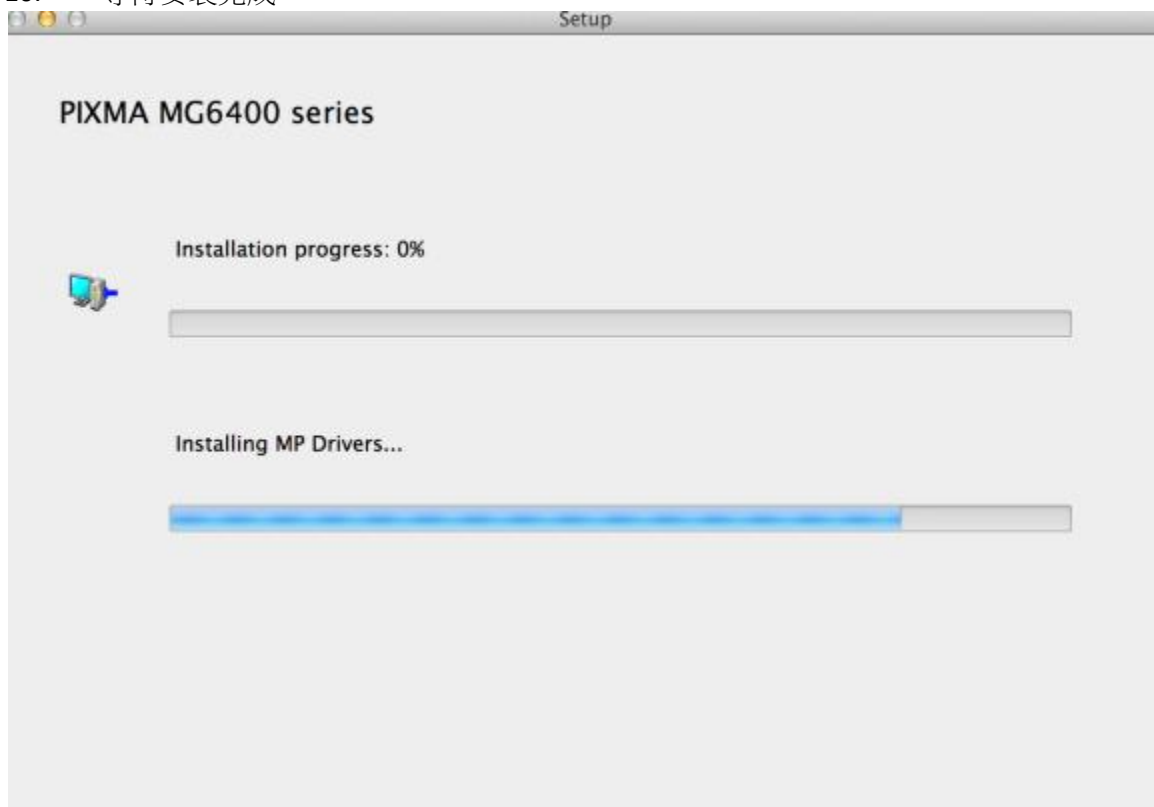
8. 按「Yes」



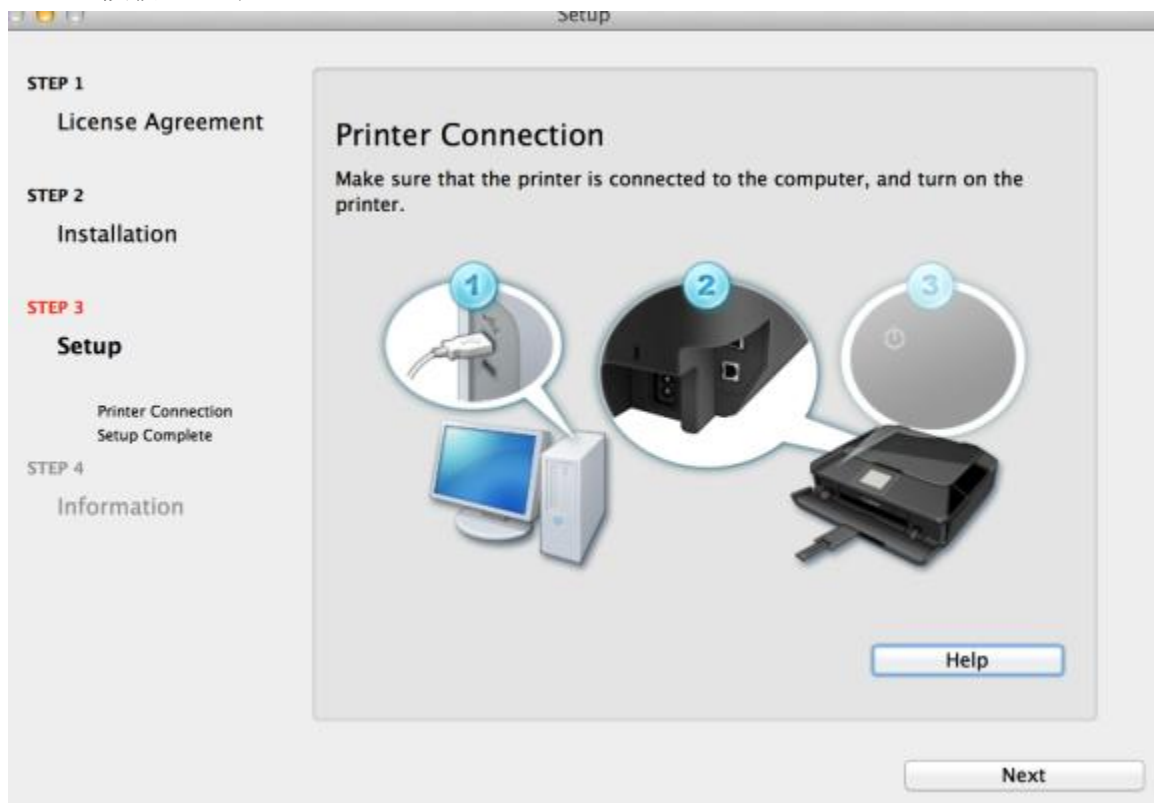
9. 可自訂是否在桌面放置說明書



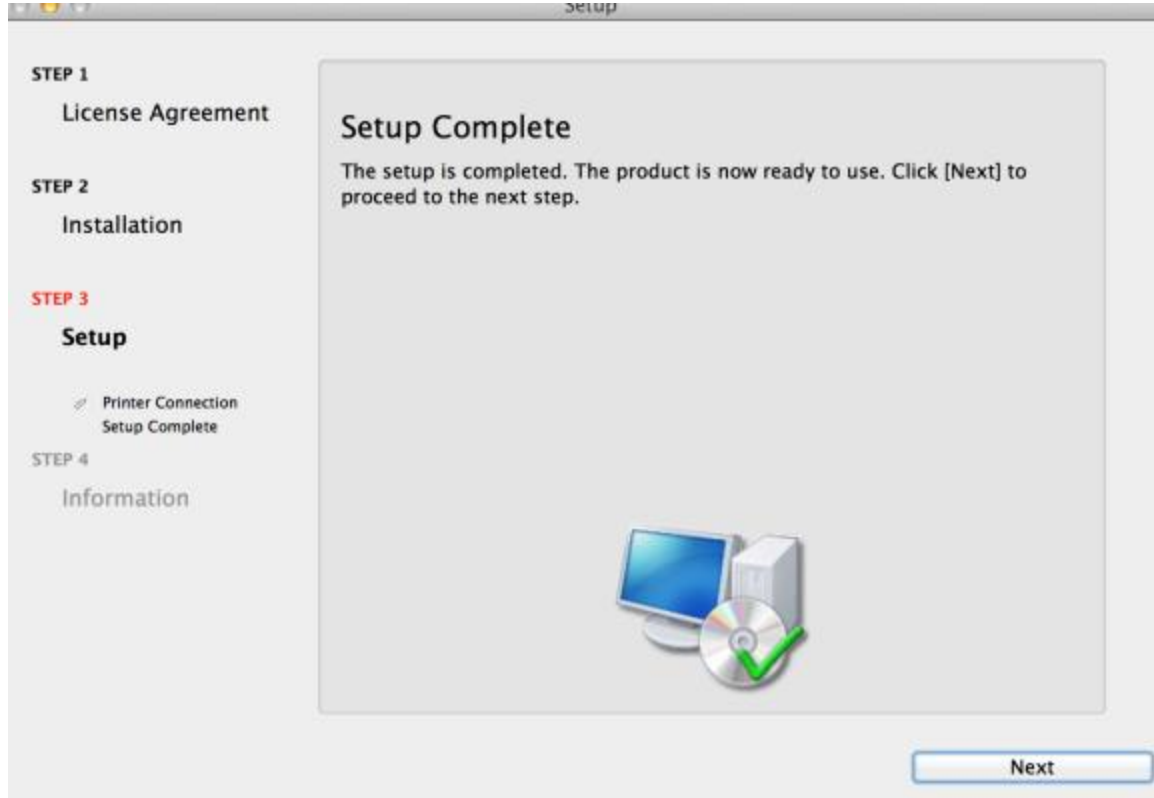
10. 等待安裝完成



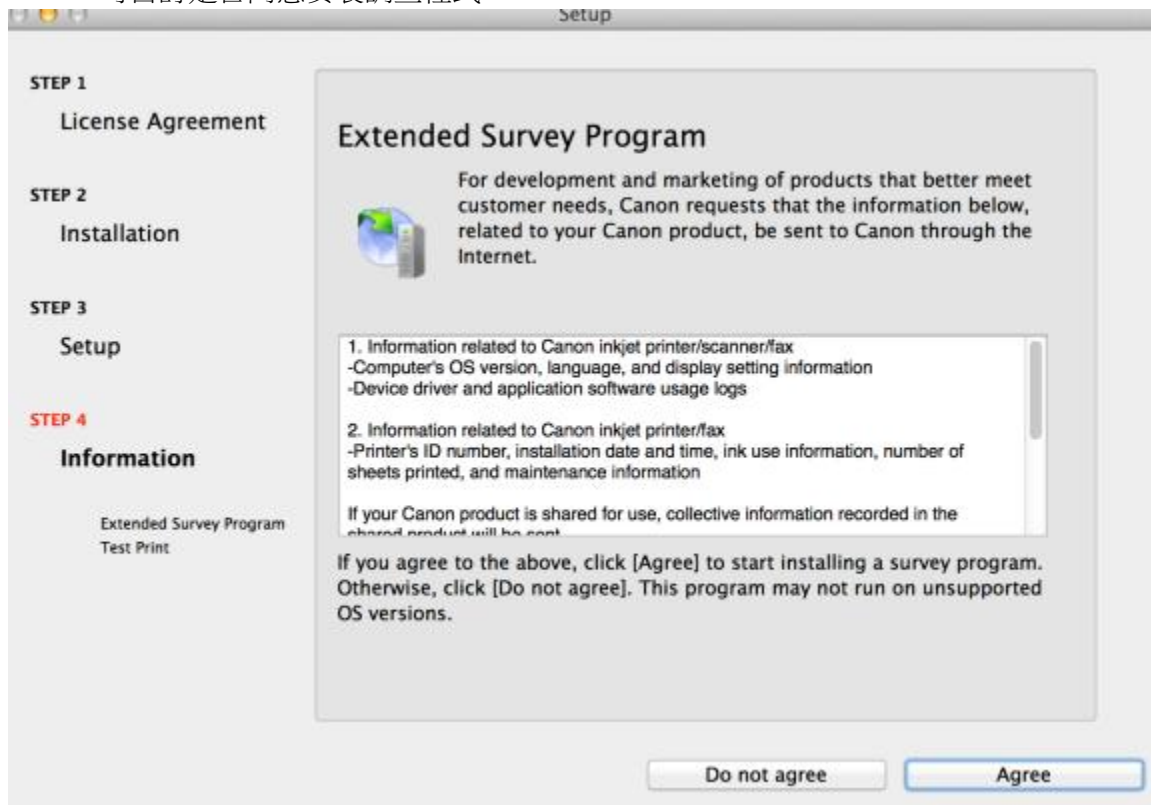
11. 接駁 USB 線



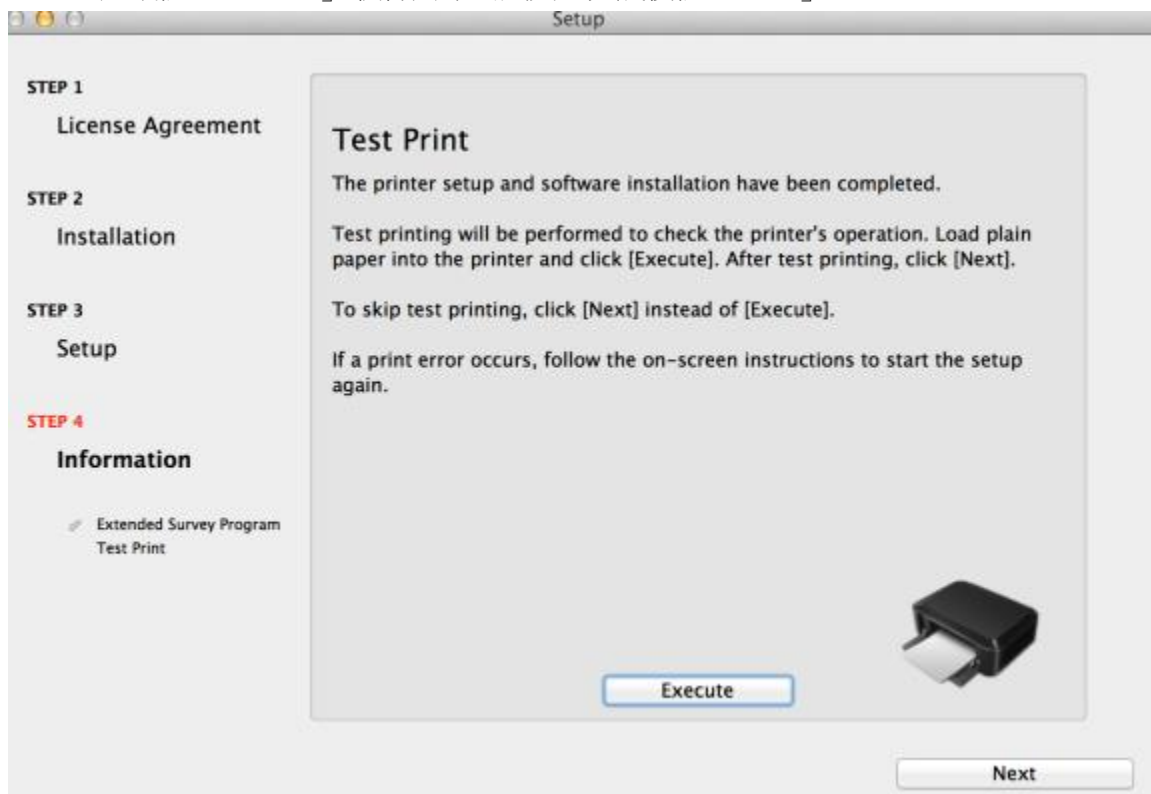
12. 按「Next」



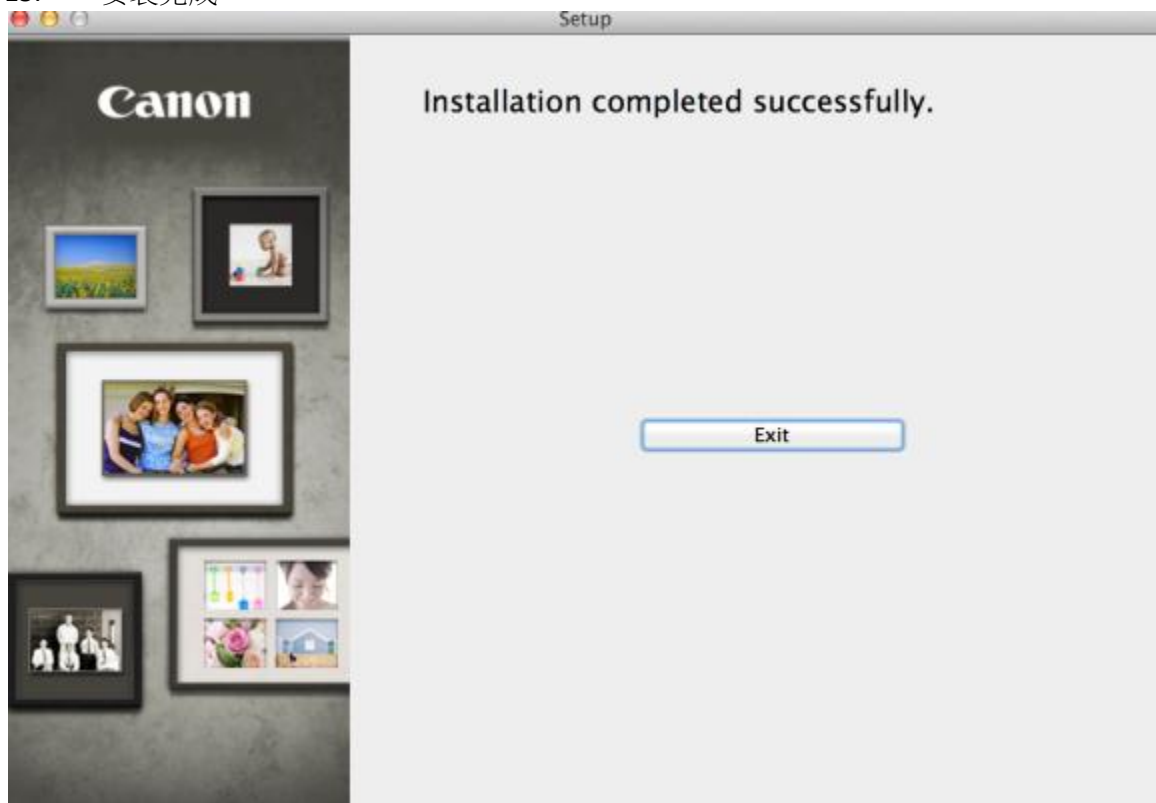
13. 可自訂是否同意安裝調查程式



14. 建議按「Execute」執行列印測試頁，完成後按「Next」



15. 安裝完成



-完-