

Canon

EOS 30V

EOS 33V



A sophisticated
combination of
beauty and intelligence

Stunning range of features: with looks to match

▶ Packed with high performance features for the advanced amateur photographer, the superb Canon EOS 30V/33V has the perfect combination of form and function. The sophisticated ultra matte coated exterior and ergonomically designed smooth electroform dials, create an ideal premium outer shell for the curvaceous solid body.

▶ Inside, the Canon EOS 30V/33V brings you a whole suite of the most sophisticated and advanced features to match the elegant exterior. As well as an innovative new focusing system that provides not only a range of options but also the fastest AF performance in its class*. There are also new features like the new backlit display for low-light shooting, the super quiet film transport operation and a new distance-based flash metering system (E-TTL II).

All in all, the EOS 30V/33V comes perfectly equipped from the outside to the inside to allow you to concentrate on what's important - taking great photographs.

* With EF 28-105mm f/4-5.6 USM Lens



Speed



The fastest AF in its class

▶ To ensure that you never miss the perfect shot, the Canon EOS 30V/33V has a powerful set of tools for the most rapid response photography □ especially suited to sports and wildlife photography. The Canon EOS 30V/33V shares much of the high performance found in Canon's EOS-1V and EOS-3. It can track moving objects with great precision and speed, as well as allowing up to four photographs to be taken per second. Significant technology improvements have created an AF performance that rivals leading top-of-the-line SLRs and easily makes the Canon EOS 30V/33V the fastest AF in its class in One Shot AF mode. Also, the latest predictive-AF algorithm has improved the subject's in-focus rate in the AI Servo mode. It's never been easier to capture all the excitement - even in the most fast and furious moments.

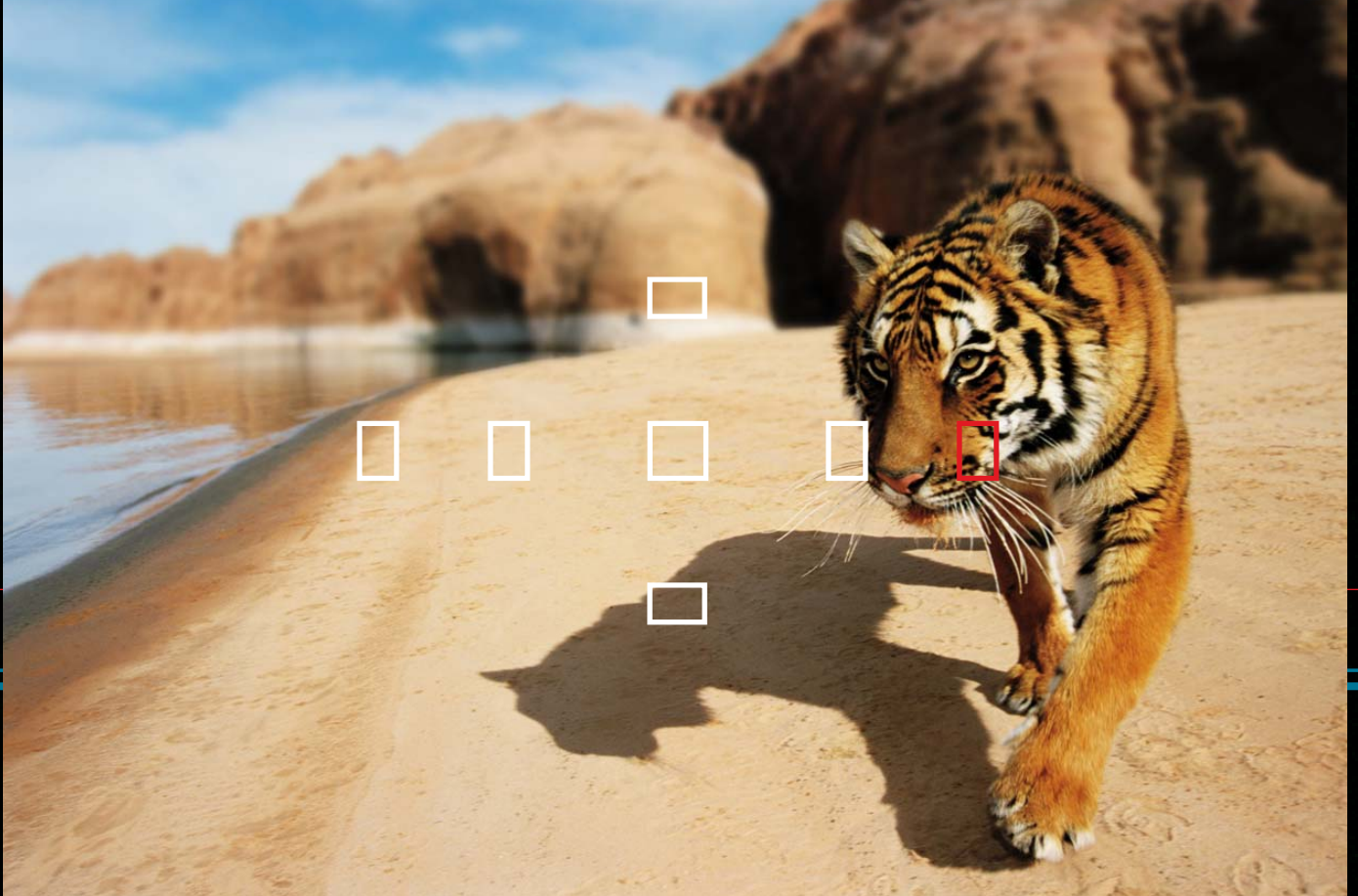


4 frames per second

- ▶ **One-Shot AF** Best suited to portrait or still-life photography, wide-area One-Shot AF ensures that once you've created the desired composition, one of the seven focusing points quickly focuses on the subject. This is especially useful when the subject is off-center, allowing sharp focus without having to adjust the creative composition.
- ▶ **AI Focus AF** This provides the optimum control in any situation. When in AI Focus mode the Canon EOS 30V/33V detects subject movement automatically and selects AI Servo AF or One-Shot AF - according to what best fits the situation.
- ▶ **AI Servo AF** The perfect solution for fast moving subjects, AI Servo AF allows you to follow the subject continuously until the shutter is released, continuously adjusting focus for sharper results.

• ONE SHOT
• AI FOCUS
• AI SERVO

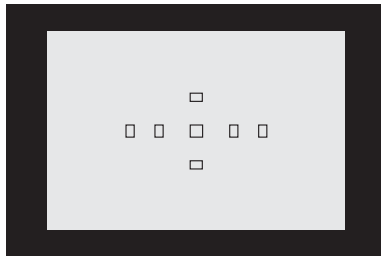
ISO



Precision |||||

7-Point AF and Superior Metering

► The Canon EOS 30V/33V brings you a whole new level of high-speed, precision photography with 7-point Wide-Area Autofocus. The seven focusing points are arranged in a cross pattern to deliver the widest possible focus area and allow almost instantaneous sharp focusing even when your subject is off center - so there's no need for you to change the creative composition of the shot. Vertically or horizontally, stationary or moving objects, in low light and even with low contrast, the Canon EOS 30V/33V 7-point Wide-Area Autofocus does what you imagined and delivers razor-sharp images every time.

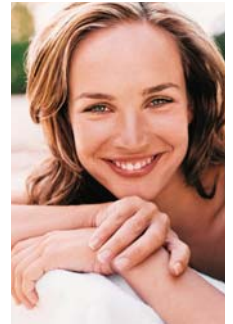


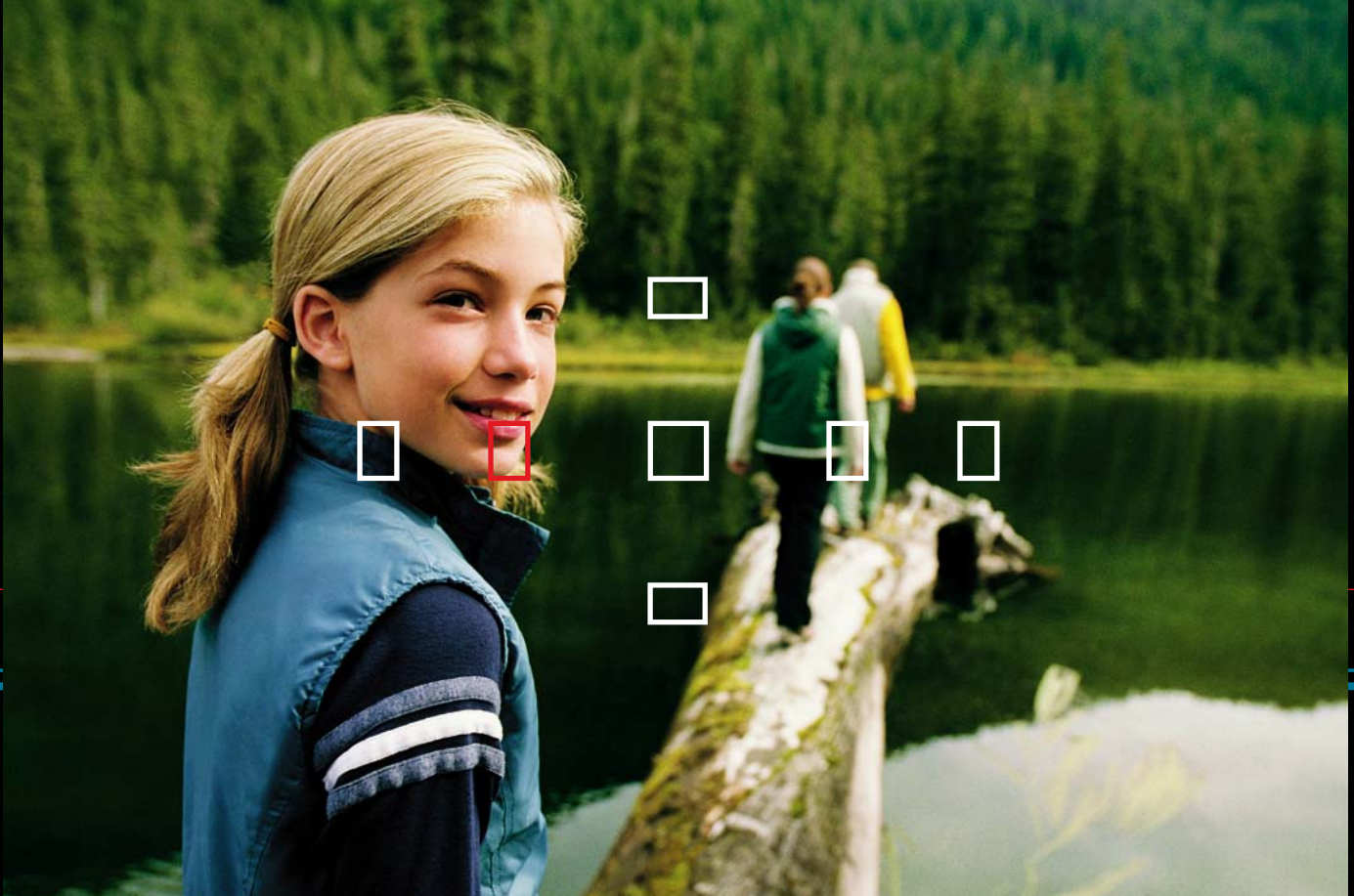
► **35-zone Evaluative Metering** Combine the 7-point AF with the Canon EOS 30V/33V sophisticated 35-zone Evaluative Metering system and you can ensure that every photograph will not only be sharp, but also perfectly lit. Ideal for shooting environments that combine light and shadow or strong backlight, this complex and precise metering system ensures optimal exposure in both vertical and horizontal formats.



► **Partial Metering** It measures 10% of the viewfinder at the center or around the chosen focusing point to provide pinpoint accuracy when metering shadows, highlights or subjects against very bright or dark backgrounds.

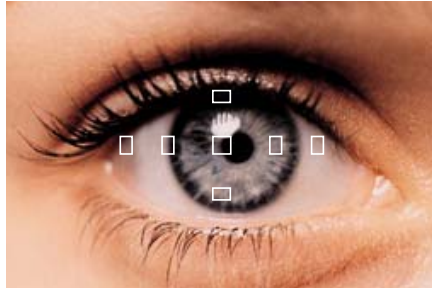
► **Center-Weighted Average Metering** Canon EOS 30V/33V measures the whole scene while putting greater emphasis on what appears in the center of the frame. This technique is the chosen method of many experienced photographers.





Intelligence |||||

Precision Eye-control Focus



As a serious photographer, your eyes are your greatest asset. And the Canon EOS 30V makes the most of this asset for instant, intuitive AF in almost any situation. This is Canon's fastest, most precise eye control system to date and distinguishes the EOS 30V from almost every other camera in its class.



Eye-Control Focus The exceptional high precision Eye-Control Focus is designed to link eye movement with the seven AF points, adjusting instantaneously to track composition and focus in one smooth step - whether in horizontal or vertical orientation. As your eye is drawn to the natural focal point of your composition, so the focus is quickly adjusted - if you're looking right at it, it's in focus.



Flexibility



Maximize Personal Creativity

▼ The Canon EOS 30V/33V Command Dial allows individual users to select their preferred function for a vast range of photographic possibilities. Beginners and professionals alike will appreciate the many fully automatic functions in the Image Zone, knowing that the sophisticated EOS 30V/33V will make the right choice every time. Alternatively, users can enjoy greater control, including full manual operation, using the Command Dial to select one of many options in the Creative Zone.



▼ **Noise-free Operation** At times when silence is the key to the success of your shot – for wildlife or event photography for example – film transport, shutter operation and mirror operation noise levels are all suppressed, making the Canon EOS 30V/33V the quietest EOS ever.



▼ **Multiple Exposure** Endless creative possibilities are enabled with the multiple exposure setting as it can record up to nine images on a single frame of film.



AEB



+1/2



±0

▼ **Auto Exposure Bracketting (AEB)** To ensure correct exposure in complex lighting situations, AEB allows individual photographers to select their preferred degree of under or overexposure in the bracketing sequence of ± 2 stops in 1/2 stop increments.



-1/2





Sophistication |||||

Enhanced Flash Exposure



E-TTL



E-TTL II

► The Canon EOS 30V/33V brings out the very best in every situation - including shooting unusually light or dark subjects or if you have a highly reflective object in the background. Every shot will have a more precise and stable flash exposure because of the new distance-based E-TTL II Autoflash System. This advanced E-TTL II metering system links focusing distance information to the 35-zone sensor readings from the pre-flash of the EX-series Speedlite. Flash calculation compensates for subject reflection by ignoring areas with abnormally high readings. Pre-focus can be used to alter composition without risking under or over-exposure due to non-centered subjects. A new algorithm exposes white objects correctly for more natural exposures on items such as wedding dresses and china.



► **Build-in Flash** Even with just the camera body, the built-in flash operates automatically in either shooting modes of Full-Auto, Portrait, Night Scene or Close-up. Having a Guide Number rating of 13 (ISO 100, m), the flash range covers as wide as a 28mm lens, and recovers in just 2 seconds time. The flash also supports the Red-Eye Reduction function for better portraits.

► Flash Exposure Bracketing (FEB)

For crucial moments when perfect exposure is of paramount importance, the Canon EOS 30V/33V supports FEB when used with options like Speedlite 550EX, Macro Twin Lite MT-24EX or Macro Ring Lite MR-14EX. FEB shoots three shots in a row - the first at proper exposure, the next underexposed, the last overexposed - with ± 2 stops in 1/2 stop increments, assuring the correct amount of flash will be recorded.



Expandability

Full Range Accessories

▶ To boost the power of the Canon EOS 30V/33V, the Canon EX-series Speedlites provide a range of powerful flash extensions, including compact, multi-functional and adjustable models.



550EX



420EX

▶ To add more power to the Canon EOS 30V/33V, choose one of Canon's EX-series Speedlites. The powerful Speedlite 550EX, with a max guide number of 55 (ISO 100, m), or the more compact 420EX, with up to 42 (ISO 100, m), adds full E-TTL flash metering, rotating, zooming heads and more.

▶ For brilliant closeups, the Macro Ring Lite MR-14EX offers a full range of advanced flash features including E-TTL Wireless Autoflash control of off-camera slave units.



MR-14EX



MT-24EX

▶ When your shot calls for a serious close-up, the Macro Twin Lite MT-24EX offers a creative lighting alternative to the traditional ring lite. For a better quality of light, two separate flash heads can be aimed separately as they rotate around the lens – or even removed from their holder and mounted off-camera. MT-24EX is fully E-TTL compatible and allows wireless E-TTL flash control.

▶ Use Remote Switch RS-60E3 to release the shutter by cable up to 0.6m away or choose Remote Controller RC-1 to activate the shutter using an infrared transmitter from up to 5m away.



RS-60E3



RC-1

▶ For greater convenience, choose the compact and lightweight Battery Pack BP-300. Ideally suited to the Canon EOS 30V/33V, it has a comfortable vertical grip, with controls including Shutter Release and AE Lock and accepts four "AA" batteries or two CR123A lithium batteries.



BP-300

▶ Get creative with a vast range of the most sophisticated, technically superior lenses available today. Canon EF Lenses are used by countless professionals and enthusiasts worldwide who appreciate innovative design and superior optics. Second to none in terms of quality and value, more than 50 high-quality EF Lenses are compatible with the EOS 30V/33V and allow you make the most of the camera's exceptional features, while taking your creativity to new heights.



EF Lens Group

EF Lenses Specifications

Canon EF Lens	Lens Construction (elements/groups)	Closest Focusing Distance (m)	Maximum Magnification (x)	Filter Diameter (mm)	Max. Diameter x Length (mm)	Weight (g)	Lens Hood
• EF 16-35mm f/2.8L USM	14 / 10	0.28	0.22 (at 35mm)	77	83.5 x 103	600	EW-83E
• EF 17-40mm f/4L USM	12 / 9	0.28	0.24 (at 40mm)	77	83.5 x 96.8	500	EW-83E
• EF 20-35mm f/3.5-4.5 USM	12 / 11	0.34	0.13 (at 35mm)	77	83.5 x 68.9	340	EW-83II
• EF-S 18-55mm f/3.5-5.6*	11 / 9	0.28	0.28 (at 55mm)	58	69 x 66.2	190	EW-60C
• EF 24-70mm f/2.8L USM	16 / 13	0.38	0.29 (at 70mm)	77	83.2 x 123.5	950	EW-83F
• EF 24-85mm f/3.5-4.5 USM	15 / 12	0.5	0.16 (at 85mm)	67	73.0 x 69.5	380	EW-73II
• EF 28-80mm f/3.5-5.6 II	10 / 10	0.38	0.26 (at 80mm)	58	67 x 71	200	EW-60C
• EF 28-90mm f/4-5.6 II USM	10 / 8	0.38	0.30 (at 90mm)	58	67 x 71	190	EW-60C
• EF 28-90mm f/4-5.6 II	10 / 8	0.38	0.30 (at 90mm)	58	67 x 71	190	EW-60C
• EF 28-105mm f/3.5-4.5 II USM	15 / 12	0.5	0.19 (at 105mm)	58	72.0 x 75.0	375	EW-63II
• EF 28-105mm f/4-5.6 USM	10 / 9	0.48	0.19 (at 105mm)	58	67 x 68	210	EW-63B
• EF 28-105mm f/4-5.6	10 / 9	0.48	0.19 (at 105mm)	58	67 x 68	210	EW-63B
• EF 28-135mm f/3.5-5.6 IS USM	16 / 12	0.5	0.19 (at 135mm)	72	78.4 x 96.8	540	EW-78BII
• EF 28-200mm f/3.5-5.6 USM	16 / 12	0.45	0.28 (at 200mm)	72	78.4 x 89.6	500	EW-78D
NEW • EF 28-300mm f/3.5-5.6L IS USM	23 / 16	0.7	0.3 (at 300mm)	77	92 x 184	1,670	EW-83G
• EF 55-200mm f/4.5-5.6 II USM	13 / 13	1.4	0.17 (at 200mm)	77	86.2 x 197	1,470	ET-86
• EF 70-200mm f/2.8L IS USM	23 / 18	1.5	0.16 (at 200mm)	77	84.6 x 193.6	1,310	ET-83II
• EF 70-200mm f/2.8L USM	18 / 15	1.2	0.21 (at 200mm)	67	76 x 172	705	ET-74
• EF 70-200mm f/4L USM	16 / 13	1.5	0.26 (at 300mm)	58	78.5 x 137.2	650	ET-64II
NEW • EF 70-300mm f/4.5-5.6 DO IS USM	18 / 12	1.4	0.19 (at 300mm)	58	82.4 x 99.9	720	ET-65B
• EF 75-300mm f/4-5.6 IS USM	15 / 10	1.5	0.26 (at 300mm)	58	78.5 x 137.2	650	ET-64II
• EF 75-300mm f/4-5.6 III USM	13 / 9	1.5	0.25 (at 300mm)	58	71.0 x 122	480	ET-60
• EF 75-300mm f/4-5.6 III	13 / 9	1.5	0.25 (at 300mm)	58	71.0 x 122	480	ET-60
• EF 80-200mm f/4.5-5.6 II	10 / 7	1.5	0.16 (at 200mm)	52	69.0 x 78.5	250	ET-54
• EF 90-300mm f/4-5.6 USM	13 / 9	1.5	0.25 (at 300mm)	58	71 x 114.7	420	ET-60
• FF 90-300mm f/4-5.6	13 / 9	1.5	0.25 (at 300mm)	58	71 x 114.7	420	ET-60
• EF 100-300mm f/4.5-5.6 USM	13 / 10	1.5	0.20 (at 300mm)	58	73.0 x 121.5	540	ET-65III
• EF 100-400mm f/4.5-5.6L IS USM	17 / 14	1.8	0.20 (at 400mm)	77	92.0 x 189.0	1,380	ET-83C
• EF 14mm f/2.8L USM	14 / 10	0.25	0.10	Rear Gel Holder	77.0 x 89.0	560	Built-In
• EF 15mm f/2.8 Fisheye	8 / 7	0.2	0.14	Rear Gel Holder	73.0 x 62.2	330	Built-In
• EF 20mm f/2.8 USM	11 / 9	0.25	0.14	72	77.5 x 70.6	405	EW-75II
• EF 24mm f/1.4L USM	11 / 9	0.25	0.16	77	83.5 x 77.4	550	EW-83DII
• EF 24mm f/2.8	10 / 10	0.25	0.16	58	67.5 x 48.5	270	EW-60II
• EF 28mm f/1.8 USM	10 / 9	0.25	0.18	58	73.6 x 55.6	310	EW-63II
• EF 28mm f/2.8	5 / 5	0.3	0.13	52	67.4 x 42.5	185	EW-65II
• EF 35mm f/1.4L USM	11 / 9	0.3	0.18	72	79.0 x 86.0	580	EW-78C
• EF 35mm f/2	7 / 5	0.25	0.23	52	67.4 x 42.5	210	EW-65II
• EF 50mm f/1.4 USM	7 / 6	0.45	0.15	58	73.8 x 50.5	290	ES-71II
• EF 50mm f/1.8 II	6 / 5	0.45	0.15	52	68.2 x 41.0	130	ES-62
• EF 55mm f/1.2L USM	8 / 7	0.95	0.11	72	91.5 x 84.0	1,025	ES-79II
• EF 55mm f/1.8 USM	9 / 7	0.85	0.13	58	75.0 x 71.5	425	ET-65III
• EF 100mm f/2 USM	8 / 6	0.9	0.14	58	75.0 x 73.5	460	ET-65III
• EF 135mm f/2L USM	10 / 8	0.9	0.19	72	82.5 x 112.0	750	ET-78II
• EF 135mm f/2.8 with Softfocus	7 / 6	1.3	0.12	52	69.2 x 98.4	390	ET-65III
• EF 200mm f/2.8L II USM	9 / 7	1.5	0.16	72	83.2 x 136.2	765	ET-83BII
• EF 300mm f/2.8L IS USM	17 / 13	2.5	0.13	52 Drop-in	128.0 x 252.0	2,550	ET-120
• EF 300mm f/4L IS USM	15 / 11	1.5	0.24	77	90.0 x 221.0	1,190	Built-In
• EF 400mm f/2.8L IS USM	17 / 13	3	0.15	52 Drop-in	163.0 x 349.0	5,370	ET-155
• EF 400mm f/4.0L DO IS USM	17 / 13	3.5	0.12	52 Drop-in	128.0 x 232.7	1,940	ET-120
• EF 400mm f/5.6L USM	7 / 6	3.5	0.12	77	90.0 x 256.5	1,250	Built-In
• EF 500mm f/4L IS USM	17 / 13	4.5	0.12	52 Drop-in	146.0 x 387.0	3,870	ET-138
• EF 600mm f/4L IS USM	17 / 13	5.5	0.12	52 Drop-in	168.0 x 456.0	5,360	ET-160
• EF 1200mm f/5.6L USM v	13 / 10	14	0.09	48 Drop-in	228.0 x 836.0	16,500	Built-in
• EF 50mm f/2.5 Compact Macro	9 / 8	0.23	0.50	52	67.6 x 63.0	280	-
• Life-Size Converter EF***	4 / 3	0.24	1.00	-	67.6 x 34.9	160	-
• MP-E65mm f/2.8 1-5x Macro Photo	10 / 8	0.24	5.00	58	81.0 x 98.0	730	-
• EF 100mm f/2.8 Macro USM	12 / 8	0.31	1.00	58	79.0 x 119.0	600	ET-67
• EF 180mm f/3.5L Macro USM	14 / 12	0.48	1.00	72	82.5 x 186.6	1,090	ET-78II
• TS-E 24mm f/3.5L*	11 / 9	0.43	0.14	72	78.0 x 86.7	570	EW-75BII
• TS-E 45mm f/2.8*	10 / 9	0.4	0.16	72	81.0 x 90.1	645	EW-79BII
• TS-E 90mm f/2.8*	6 / 5	0.5	0.29	58	73.6 x 88.0	565	ES-65III
• Extender EF1.4 x II**	5 / 4	-	-	-	72.8 x 27.2	220	-
• Extender EF2 x II**	7 / 5	-	-	-	71.8 x 57.9	265	-
• Extension Tube EF 12 II	*6	-	-	-	66.5 x 12.3	66	-
• Extension Tube EF 25 II	*7	-	-	-	66.5 x 27.3	95	-

Subject to change without notice

- v Special order item
- * TS-E and MP-E lenses are manual focus only, with automatic diaphragm.
- ** Extenders EF1.4x and EF2x are for exclusive use with EF 70-200mm f/2.8L, EF 70-200mm f/4L, EF 100-400mm f/4.5-5.6L, EF 135mm f/2L, EF 180mm f/3.5L Macro, EF 200mm f/1.8L, EF 200mm f/2.8L, EF 300mm f/2.8L IS, EF 300mm f/4L, EF 300mm f/4L IS, EF 400mm f/2.8L IS, EF 400mm f/5.6L, EF 500mm f/4L IS, EF 600mm f/4L IS, and EF 1200mm f/5.6L. (Manual focus only when EF 1.4x is used with EF 100-400mm f/5.6L, EF 400mm f/5.6L, EF 500mm f/4.5L, EF 1200mm f/5.6L, and with EF 180mm f/3.5 Macro when focused closer than 0.8m; or with Extender EF 2x when used with EF 70-200mm f/4L, EF 100-400mm f/4.5-5.6L, EF 180mm f/3.5L Macro, EF 300mm f/4L IS, EF 300mm f/4L, EF 400mm f/5.6L, EF 500mm f/4L, EF 500mm f/4.5L, EF 600mm f/4L, and EF 1200mm f/5.6L).
- *** Life Size Converter EF is for exclusive use with EF 50mm f/2.5 Compact Macro.
- + Available only with the EOS 300D Kit. Exclusively designed for EOS 300D. Cannot be mounted on any other EOS cameras.
- Incorporates Distance information with E-TTL II.

Specifications

TYPE

Type : 35 mm AF/AE SLR camera with built-in flash
Recording media : 35 mm film
Image size : 24 X 36 mm
Compatible lenses : Canon EF lenses (except EF-S lenses)
Lens mount : Canon EF mount (electronic control)

VIEWFINDER

Type : Eye-level pentaprism
Coverage : 90% vertical and 92% horizontal coverage
Magnification : 0.7x (-1 diopter with 50mm lens at infinity)
Eye point : 19.5mm
Dioptric adjustment range : -2.5 to +0.5 diopter
Focusing screen : New Laser-matte screen
Mirror : Quick-return half mirror (Transmission: reflection ratio of 40:60, no mirror cut-off with EF 600mm f/4 or shorter lens)
Viewfinder information : AF (AF points, focus confirmation light, Eye Control*); Exposure (shutter speed, aperture value, exposure level, AE lock); Flash (flash ready, red-eye reduction, hi-speed sync, FE lock, flash exposure compensation)
Depth-of-field preview : Depth-of-field preview button

AUTOFOCUS

Type : TTL-CT-SIR with a CMOS sensor (TTL secondary image-registration, phase detection)
AF points : 7
AF focusing range : EV 1-18 (at 20°C, ISO 100)
Focusing modes : One-Shot AF, AI Servo AF, AI Focus AF, Manual Focusing (MF)
AF point selection : Automatic selection, manual selection, manual selection with Eye Control (Eye Control AF)*
Selected AF point display : Superimposed in viewfinder and displayed on LCD panel
AF-assist beam : Built-in flash fires intermittent burst automatically. Effective range : Approx. 4.5 meters at center, approx. 4 meters at periphery.

EYE CONTROL*

Type : Eye position detected by IREDS
Calibration : Up to five calibration settings can be stored (Intelligent feature provided)

EXPOSURE CONTROL

Exposure metering modes : TTL full aperture metering with 35-zone SPC
* Evaluative metering (linkable to any AF point)
* Partial metering (approx. 10% of viewfinder at center)
* Center-weighted average metering
Metering range : EV 1 - 20 (normal temperature, 50mm f/1.4, ISO 100)
Exposure control : Program AE (Full Auto, Portrait, Landscape, Close-up, Sports, Night Portrait, Program), shutter-priority AE, aperture-priority AE, depth-of-field AE, manual exposure, E-TTL II / A-TTL / TTL autofocus
Film speeds : ISO 6 - 6400 (Set automatically for DX-coded film within ISO 25-5000)
Exposure compensation : Manual exposure compensation: +/-2 stops in 1/2-stop increments (can be used with AEB) Auto Exposure Bracketing (AEB): +/-2 stops in 1/2-stop increments
AE lock : Auto AE lock: In One-Shot AF mode, AE lock applied when focus achieved. Manual AE lock: AE lock applied with AE lock button
Multiple exposures : Max. 9 exposures

* All the specifications above are based on Canon's testing and measuring standards.
* Specifications and external appearance are subject to change without notice.
* Asterisked items apply to Eye Control models only.

SHUTTER

Type : Electronically controlled focal-plane shutter
Shutter speeds : 1/4000 - 30 sec. in 1/2-stop increments, bulb, X sync at 1/125 sec.
Shutter release : Soft touch electromagnetic release
Self-timer : Shoot after 10 sec. delay
Remote control : Remote Switch RS-60E3, Remote Controller RC-1/RC-5

BUILT-IN FLASH

Type : Retractable, auto pop-up flash
Flash metering system : AF point-linked, 3-zone TTL autofocus
Guide no. : 13 (ISO 100, meters), 43 (ISO 100, ft.)
Recycling time : Approx. 2 sec.
Flash-ready indicator : Flash-ready icon lights in viewfinder
Flash coverage : 28mm lens angle covered
Firing preconditions : In Basic Zones (expect Landscape and Sports): Auto pop-up and firing in low light and backlit conditions in daylight
Red-eye reduction : Lamp
Flash exposure compensation : +/-2 stops in 1/2-stop increments

EXTERNAL SPEEDLITE

E-TTL II / A-TTL / TTL autofocus with EOS-dedicated Speedlites

FILM TRANSPORT

Film loading : Automatic advance to frame 1
Film advance modes : Single-frame / Continuous shooting / Self-timer / Remote control
Continuous shooting speeds : One Shot AF: Max. 4 fps. AI Servo AF: Max. 3.5 fps
Frame counter : Counts up
Film rewind : Automatic / Mid-roll rewind
Film rewind time : Silent : Approx. 13 sec. High-speed : Approx. 5 sec. (24-ex. film)

DATE IMPRINTING (DATE MODEL ONLY)

Automatic dating : Up to Dec 31, 2019
Imprinting format : Month, day, year; Day, month, year; Year, month, day; Day, hour, min. or blank
Imprinting color : Orange
Power source : One CR2025 lithium battery

CUSTOMIZED FUNCTION

13 Custom Functions with 34 settings

POWER SOURCE

Battery : Two CR123A (or DL123A) lithium batteries
Battery check : Auto (4-level indicator)

Battery life :

Temperature	0% Flash Use	50% Flash Use	100% Flash Use
at 20°C	125 (115) rolls	38 (33) rolls	19 (17) rolls
at -20°C	70 (65) rolls	20 (19) rolls	10 (9) rolls

* With 24-ex. film, figures in parentheses apply when Eye Control AF is turned on

LCD panel illumination : Provided

DIMENSIONS AND WEIGHT

Dimension (W X H X D) : 146.7 X 103 X 69mm
Weight (body only) : Eye Control / DATE model: 585g Eye Control / Non-DATE model: 580g
Non-Eye Control / Non-DATE model: 575g

Canon

Asia Regional Headquarters:
Canon Hongkong Co., Ltd. Canon Singapore Pte. Ltd.

Website: www.canon-asia.com
0042W460 Canon Hongkong Co., Ltd. 2004
Printed in Hong Kong.