

# EOS 500D Specifications

Type	
Type	Digital AF/AE SLR camera with built-in flash
Recording media	SD memory card, SDHC memory card
Image sensor size	22.3 x 14.9mm
Compatible lenses	Canon EF lenses (including EF-S lenses) (35mm-equivalent focal length is approx. 1.6 times the lens focal length)
Lens mount	Canon EF mount

Image Sensor	
Type	CMOS sensor
Pixels	Effective pixels: approx. 15.10-Megapixel Total pixels: approx. 15.50-Megapixel
Aspect ratio	3:2
Color filter system	RGB primary color filter
Low-pass filter	Fixed position in front of the image sensor
Dust deletion feature	(1) Automatic sensor cleaning (2) Manual cleaning of sensor (3) Dust Delete Data appended to the captured image

Recording System	
Recording format	Design rule for Camera File System 2.0
Image type	JPEG, RAW (14-bit, Canon original)
RAW+JPEG simultaneous recording	Provided
File size	(1) Large/Fine: approx. 15.10-Megapixel (4752 x 3168), approx. 5 MB (2) Large/Normal: approx. 15.10-Megapixel (4752 x 3168), approx. 2.5 MB (3) Medium/Fine: approx. 8.00-Megapixel (3456 x 2304), approx. 3.0 MB (4) Medium/Normal: approx. 8.00-Megapixel (3456 x 2304), approx. 1.6 MB (5) Small/Fine: approx. 3.70-Megapixel (2352 x 1568), approx. 1.7 MB (6) Small/Normal: approx. 3.70-Megapixel (2352 x 1568), approx. 0.9 MB (7) RAW: approx. 15.10-Megapixel (4752 x 3168), approx. 20.2 MB * Exact file sizes depend on the subject, ISO speed, Picture Style, etc.
File numbering	Consecutive numbering, auto reset, manual reset



Canon



**Canon Hongkong Company Limited**  
 Head Office 19/F., The Metropolis Tower, 10 Metropolis Drive, Hung Hom, Kowloon.  
 Canon Image² 10/F., 26 Nathan Road, Tsim Sha Tsui, Kowloon.  
 Customer Care Centre 11/F., 26 Nathan Road, Tsim Sha Tsui, Kowloon.  
 Canon Pro Solution Hub 17/F., 26 Nathan Road, Tsim Sha Tsui, Kowloon.  
 Hotline: 3191 2333 Website: www.canon.com.hk

Printed in Hong Kong  
 0135W253 2009-06

Image Processing	
Color space	sRGB, Adobe RGB
Picture style	Standard, Portrait, Landscape, Neutral, Faithful, Monochrome, User Def. 1-3
White balance	Auto, daylight, shade, cloudy, tungsten light, white fluorescent light, flash, custom
Auto white balance	Auto white balance with the image sensor
Color temperature compensation	White balance correction: ±9 stops in full-stop increments White balance bracketing: ±3 stops in full-stop increments * Blue/amber direction or magenta/green direction possible Provided
Color temperature information transmission	Provided
Noise reduction	Long exposure noise reduction High ISO speed noise reduction Auto Lighting Optimizer
Automatic Image brightness correction	Provided
Highlight tone priority	Provided
Lens peripheral illumination correction	Provided
Add original image verification data	Provided (Verified by Original Data Security Kit OSK-E3 (optional))

Viewfinder	
Type	Eye-level pentamirror
Coverage	Vertical/Horizontal approx. 95%
Magnification	Approx. 0.87x (-1 m <sup>-1</sup> with 50mm lens at infinity)
Eyepoint	Approx. 19mm (from eyepiece lens center)
Built-in diopter adjustment	-3.0 - +1.0 m <sup>-1</sup> (diopter)
Focusing screen	Fixed, Precision Matte
Mirror	Quick-return half mirror (Transmission: reflection ratio of 40:60, no mirror cut-off with EF 600mm f/4L IS USM or shorter lenses)
Viewfinder information	AF information (AF points, focus confirmation light), exposure information (shutter speed, aperture, ISO speed, AE lock, exposure level, exposure warning, spot metering circle), flash information (flash ready, FP flash, FE lock, flash exposure compensation), image information (Highlight tone priority(D+), monochrome shooting, white balance correction, maximum burst, SD memory card information)
Depth-of-field preview	Enabled with depth-of-field preview button

AutoFocus	
Type	TTL-CT-SIR AF-dedicated CMOS sensor (TTL-Secondary image-registration, phase detection)
AF points	9 (Cross type at center)
Metering range	EV -0.5 - 18 (at 23°C, ISO 100)
Focus modes	(1) One-Shot AF (ONE SHOT) (2) AI Servo AF (AI SERVO) (3) AI Focus AF (AI FOCUS) (4) Manual focusing (MF)
AF point selection	Automatic selection, manual selection
Selected AF point display	Superimposed in viewfinder and indicated on LCD monitor
AF-assist beam	Small series of flashes fired by built-in flash Effective range: approx. 4.0m at center, approx. 3.5m at periphery

Exposure Control	
Metering modes	35-zone TTL full aperture metering (1) Evaluative metering (linkable to any AF point) (2) Partial metering (approx. 9% of viewfinder at center) (3) Spot metering (approx. 4% of viewfinder at center) (4) Center-weighted average metering
Metering range	EV 1-20 (at 23°C with EF 50mm f/1.4 USM lens, ISO 100)
Exposure control	Program AE (Full Auto, Portrait, Landscape, Close-up, Sports, Night Portrait, Flash Off, Creative Auto, Program), shutter-priority AE, aperture-priority AE, auto depth-of-field AE, manual exposure, E-TTL II autofocus, movie shooting
ISO speed	Basic Zone modes: ISO 100 - 1600 set automatically
Recommended Exposure Index	Creative Zone modes: equivalent to ISO 100-3200 (in 1-stop increments), Auto, or ISO speed can be expanded to ISO 6400 (H1) or ISO 12800 (H2)
Exposure compensation	Manual and AEB (Settable in combination with manual exposure compensation) Settable amount: ±2 stops in 1/3- or 1/2-stop increments
AE lock	Auto: applied in One-Shot AF mode with evaluative metering when focus is achieved Manual: by AE lock button in all metering modes

Shutter	
Type	Electronically-controlled, focal-plane shutter
Shutter speeds	1/4000 to 1/60sec. (All shooting modes), X-sync at 1/200 sec. 1/4000 to 30 sec., bulb (Total shutter speed range, available range varies by shooting mode)
Shutter release	Soft-touch electromagnetic release

Built-in Flash	
Type	Retractable, auto pop-up flash
Flash Metering	E-TTL II autofocus
Guide No.	13 (ISO 100, in meter)
Recycle Time	Approx. 3 sec.
Flash-ready indicator	Flash-ready icon lights in viewfinder
Flash Coverage	17mm lens angle of view
FE Lock	Provided
Flash exposure compensation	±2 stops in 1/3- or 1/2-stop increments

External Speedlite	
Compatible flash	EX-series Speedlites
Flash metering	E-TTL II autofocus
Flash exposure compensation	±2 stops in 1/3- or 1/2-stop increments
FE lock	Provided
External flash settings	Flash function settings, Flash C.Fn settings
Zooming to match lens focal length	Provided

Drive System	
Drive modes	Single, continuous, self timer/remote control (10-sec, 2-sec delay or 10-sec delay plus continuous shooting)
Continuous shooting speed	Max. approx. 3.4 shots/sec.
Max. burst	JPEG (Large/Fine): approx. 170, RAW: approx. 9, RAW+JPEG (Large/Fine): approx. 4 * Based on Canon's testing standards with 2GB SD memory card, ISO 100 and Standard Picture Style * Varies depending on the subject, SD memory card brand, image-recording quality, etc.

Live View Functions	
Shooting modes	(1) Still photo shooting (2) Movie shooting (3) Remote Live View shooting (with a personal computer installed with EOS Utility) AutoFocus (1) Quick mode (Phase-difference detection) (2) Live mode (Contrast detection) (3) Face detection Live mode (Contrast detection)
Focusing	Manual focus (5x/10x magnification possible) Evaluative metering with the image sensor EV 0-20 (at 23°C with EF 50mm f/1.4 USM lens, ISO 100) Mangifiable by 5x or 10x at AF point Two grid displays provided Simulated exposure displayed in real-time
Metering mode	Evaluative metering with the image sensor
Metering range	EV 0-20 (at 23°C with EF 50mm f/1.4 USM lens, ISO 100)
Magnified view	Mangifiable by 5x or 10x at AF point
Grid display	Two grid displays provided
Exposure display	Simulated exposure displayed in real-time

Movie Shooting	
Movie type	MOV (Video: H.264, Audio: Linear PCM)
Recording size / Frame rate	Full HD: 1,920 x 1,080 / 20fps HD: 1,280 x 720 / 30fps SD: 640 x 480 / 30fps
File size / Max. duration	Full HD: approx. 330MB/min. / approx. 12min. HD: approx. 222MB/min. / approx. 18min. SD: approx. 165MB/min. / approx. 24min. * Each movie file size cannot exceed 4GB or duration cannot exceed 29min. 59sec. * Based on Canon's testing standards using a 4GB card
Continuous shooting time	Approx. 1hr. 10min. at 23°C Approx. 1hr. at 0°C
Focusing	AutoFocus (1) Quick mode (Phase-difference detection) (2) Live mode (Contrast detection) (3) Face detection Live mode (Contrast detection)
Exposure control	Manual focus (5x/10x magnification possible) Program AE for movie shooting (Center-weighted average metering with image sensor)
Metering range	EV 0-20 (at 23°C with EF 50mm f/1.4 USM lens, ISO 100)
Exposure compensation	Possible
AE lock	Possible

LCD Monitor	
Type	TFT color liquid-crystal monitor
Monitor size	3.0 inch
Dots	Approx. 920,000 dots (VGA)
Coverage	Approx. 100%
Brightness adjustment	7 levels provided
Interface languages	25

Image Playback	
Display format	Single image, single image + info (image-recording quality, shooting information, histogram), 4- or 9-image index, rotated image possible
Zoom magnification	Approx. 1.5x - 10x
Image browsing methods	Single image, jump by 10 or 100 images, by shooting date, by movie, by stills
Highlight alert	Provided (Overexposed highlights blinks)
Histogram	Brightness, RGB
Movie playback	Provided (LCD Monitor, audio/video OUT, HDMI OUT) Built-in speaker

Image Protection and Erase	
Protect	Single images can be erase-protected or cancel
Erase	Single image, checkmarked images, all images in a card, or only unprotected images

Direct Printing	
Compatible printers	PictBridge-compatible printers
Printable images	JPEG images compliant to Design rule for Camera File System (DPOF printing possible) and RAW images captured with EOS 500D
Easy print feature	Provided
Printing order	DPOF Version 1.1 compatible

Direct Image Transfer	
Compatible images	JPEG/RAW images and movies * Only JPEG images can be transferred as wallpaper on the personal computer screen

Customization	
Custom Functions	13
My Menu registration	Provided



Interface	
Digital terminal	For personal computer communication and direct printing (Hi-Speed USB), audio/video output (NTSC/PAL)
HDMI mini OUT terminal	Type C (Auto switching of resolution)
Remote control terminal	Compatible with remote switch RS-60E3
Wireless remote control	Remote Controller RC-1/RC-5

Power Source																							
Battery	Battery Pack LP-E5 (Quantity 1) * AC power can be supplied via AC Adapter Kit ACK-E5 (optional) * With Battery Grip BG-E5 attached (optional), size-AA batteries can be used																						
Battery life	Number of shots (approx.) <table border="1"> <thead> <tr> <th rowspan="2">Shooting method</th> <th rowspan="2">Flash use</th> <th colspan="2">Temperature</th> </tr> <tr> <th>At 23°C</th> <th>At 0°C</th> </tr> </thead> <tbody> <tr> <td>Viewfinder Shooting</td> <td>0%</td> <td>500</td> <td>490</td> </tr> <tr> <td></td> <td>50%</td> <td>400</td> <td>380</td> </tr> <tr> <td>Live View Shooting</td> <td>0%</td> <td>180</td> <td>180</td> </tr> <tr> <td></td> <td>50%</td> <td>170</td> <td>160</td> </tr> </tbody> </table> * The above figures apply with a fully-charged Battery Pack LP-E5 * The figures above are based on CIPA (Camera and Imaging Products Association) testing standards	Shooting method	Flash use	Temperature		At 23°C	At 0°C	Viewfinder Shooting	0%	500	490		50%	400	380	Live View Shooting	0%	180	180		50%	170	160
Shooting method	Flash use			Temperature																			
		At 23°C	At 0°C																				
Viewfinder Shooting	0%	500	490																				
	50%	400	380																				
Live View Shooting	0%	180	180																				
	50%	170	160																				
Battery check	Automatic																						
Power saving	Provided, power turns off after 30 sec., 1, 2, 4, 8, or 15min.																						
Date/Time backup battery	Built-in secondary battery																						
Startup Time	Approx. 0.1 sec. (Based on CIPA testing standards)																						

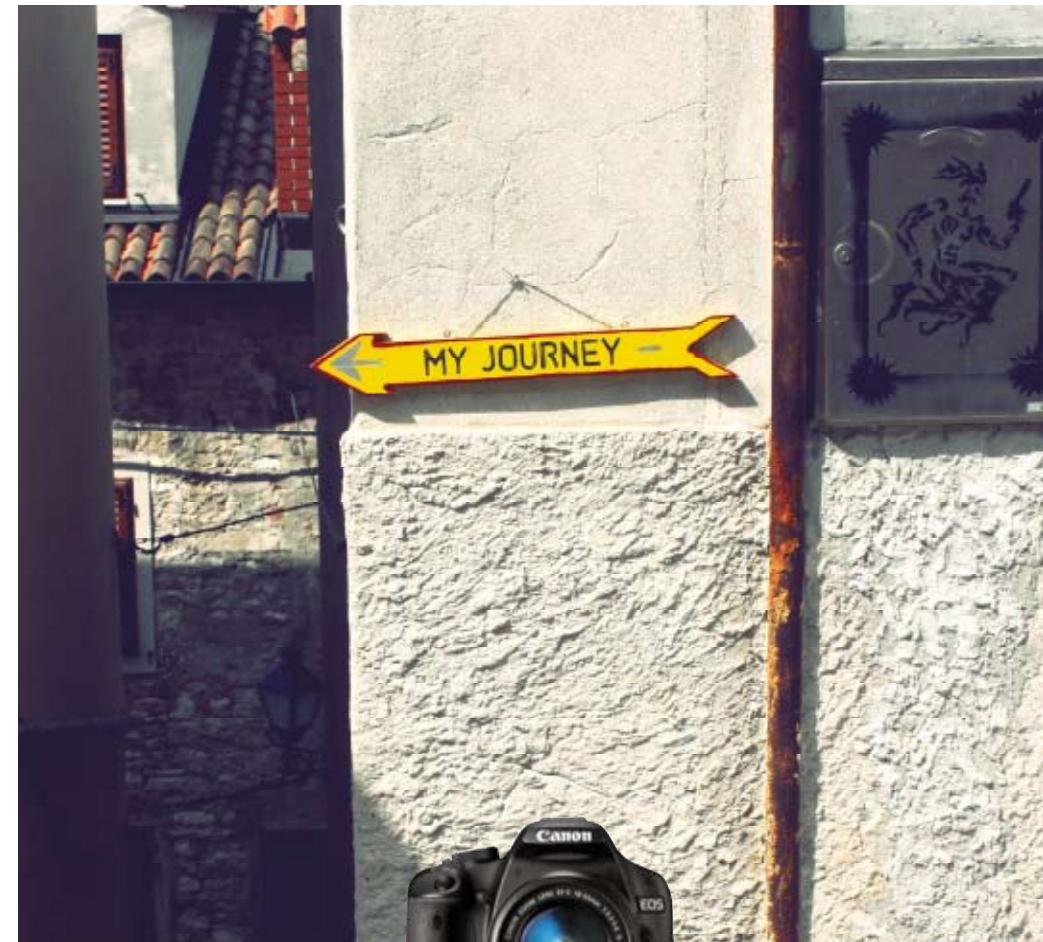
Dimensions & Weight	
Dimensions (W x H x D)	128.8 x 97.5 x 61.9mm
Weight	Approx. 480g (body only, battery: approx. 50g)

Operating Environment	
Working temperature range	0°C - 40°C
Working humidity	85% or less

\* All the specifications above are based on Canon's testing standards  
 \* The camera's specifications and physical appearance are subject to change without notice

Canon

Delighting You Always

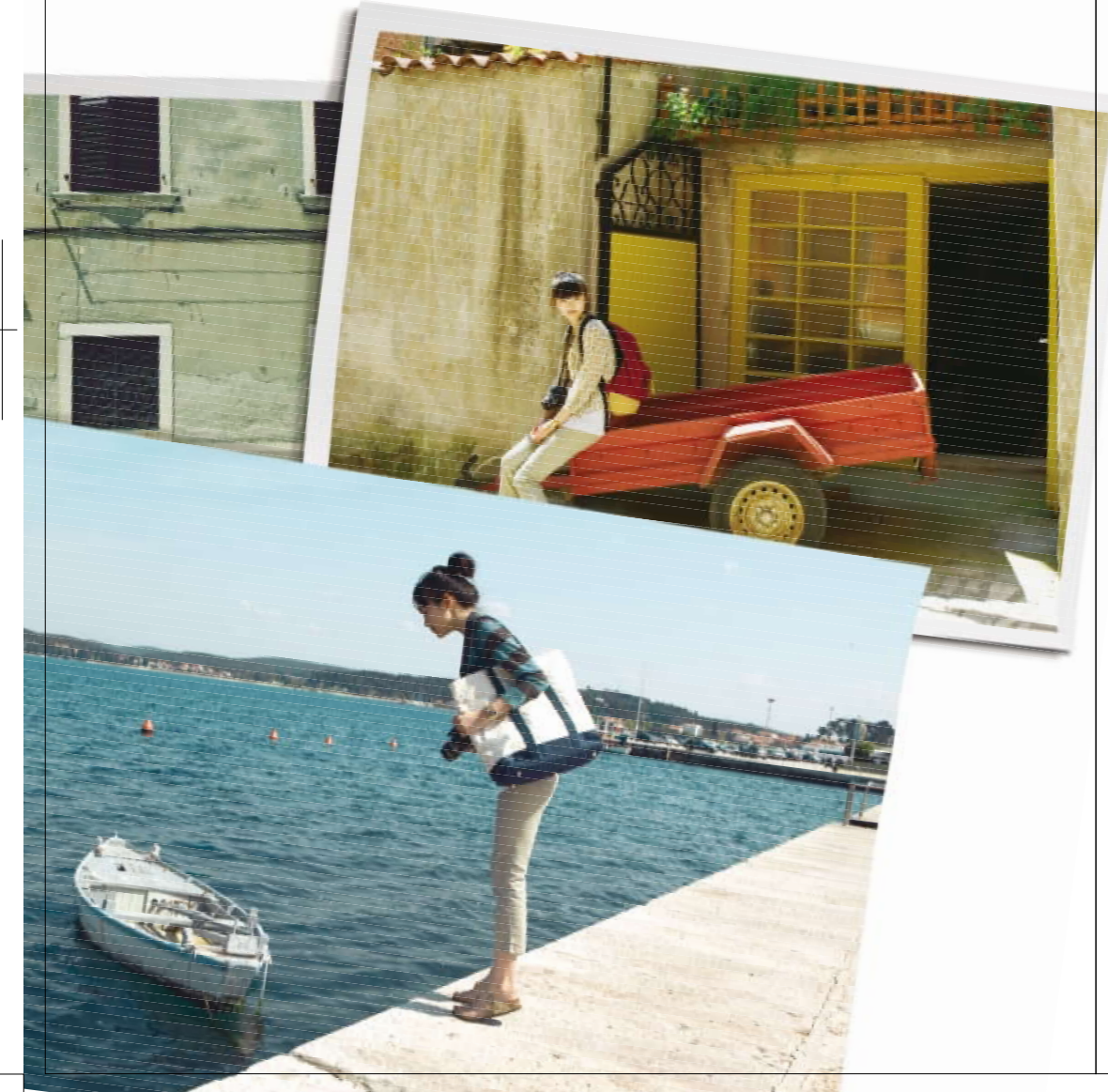


EOS 500D

FULL HD movies! Fine detailed images!  
 capture every moment - my journey

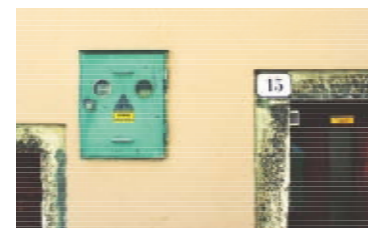
## 15.1-Megapixel Canon CMOS Sensor

- High-resolution and sharp images in fine details
- ISO 100-12800, widest sensitivity range in its class, excellent for low-light shooting

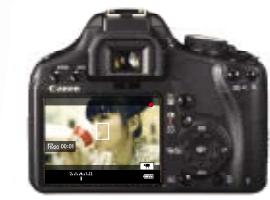


## DIGIC 4 Digital Image Processor

- High processing power enables natural color reproduction and faster response
- 14-bit Analog-to-Digital (A/D) conversion produces RAW images with richer, finer and more accurate gradations of tones and colors
- Ideal for images with subtle hue changes like skin tone and sky, etc.



## Full HD (1,920x1,080) Movie Recording



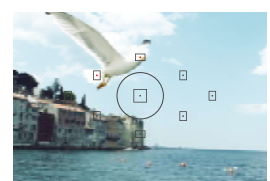
- Dedicated movie shooting mode for easy and convenient operation
- Records full HD movie at 1,920 x 1,080 resolution
- Fully extends image creativity for fabulous effects through the unfettered access to the complete lineup of more than 50 EF Lenses, ranging from fish-eye, macro to super-telephoto
- Easy and instant sharing of images or movies on full HD TVs or other HD devices through HDMI output terminal



## 3-inch Clear View LCD and Live View Mode

- Large and clear 3-inch Clear View LCD with 920,000-dot resolution and 170° wide viewing angle
- Live View Mode for easier and more comfortable shooting from awkward angles
- Quick Control screen facilitates easier and intuitive control of the camera settings through the LCD screen

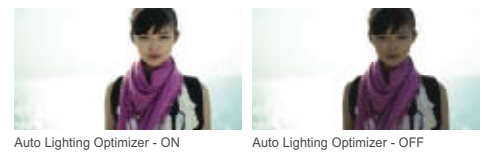
## 9-point High-speed AF and 3.4fps Continuous Shooting



- Precise 9-point AF system covers a wide area, ideal for bringing off-centre subject to the focus
- Centre cross-type AF sensor achieves quick and accurate auto focus for different subject types
- Continuous shooting at 3.4fps with the maximum burst of 170 JPEG or 9 RAW image

## Auto Image Optimization

- Peripheral Illumination Correction for effective correction of light fall-off at image corners commonly found when shooting with wide-angle lens
- Advanced Auto Lighting Optimizer analyses and optimizes backlight or low contrast images automatically



Auto Lighting Optimizer - ON      Auto Lighting Optimizer - OFF

## EOS Integrated Cleaning System

- Use of dust-resistance material for camera's shutter and internal mechanism
- Front of low pass filter is subject to anti-static treatment to minimize dust adhesion
- Self Cleaning Sensor Unit shakes off dust with ultrasonic vibration during start up and shut down of camera
- Dust Delete Data maps the dust's positions and remove with Digital Photo Professional afterwards



## Fully Compatible with Canon's EF Lenses



- Fully compatible with more than 50 EF Lenses ranging from 14mm ultra-wide angle to 800mm super-telephoto, plus macro and TS-E lenses
- EF Lenses feature advanced technologies including Fluorite element, Multi-layered Diffractive Optical Element (DO), SWC anti-flare coating, Optical Image Stabilizer (IS) and Ultrasonic Motor (USM) to offer exceptional image quality and superb operability



## PIXMA Smart Home All-in-one Photo Printer Series



### High Quality Photo • Film Scan • Wi-Fi • 6-color Individual Ink System • Gray Ink for B&W Photo Print

- 1pl ink droplet and 9,600dpi professional photo print resolution
- 6-color individual ink tank system including gray ink for B&W photo print
- 35mm film scan/direct print
- Built-in Wi-Fi for wireless and Ethernet for network print/scan



### High Quality Photo • Auto Duplex Print/Copy

- 1pl ink droplet and 9,600dpi professional photo print resolution
- 5-color individual ink tank system: the photo black ink sharply increase color contrast
- Multi card slot and direct scan PDF/JPEG file to memory card/USB drive
- DVD/CD cover print/copy and auto duplex print/copy



### High Quality Photo • Wi-Fi Print

- 1pl ink droplet and 9,600dpi professional photo print resolution
- 5-color individual ink tank system: the photo black ink sharply increase color contrast
- Built-in Wi-Fi for wireless and Ethernet for network print/scan
- Multi card slot and direct scan PDF/JPEG file to memory card/USB drive

## PIXMA Smart Mobile Printer



### Compact & portable • High Quality Photo Print

- The smallest and lightest portable A4 photo & document printer in its class\*
- 1pl ink droplet & 9,600dpi professional photo print resolution
- Optional rechargeable battery and automobile power unit for mobile printing
- 5-color ink system with dedicated black ink for B&W document printing
- One year international warranty

\*As of 14-Apr-2008

## Canon Premium Photo Papers

**Professional Fine Art Papers**  
Manufactured by the worldwide market leader of FineArt photo paper - Hahnemühle FineArt GmbH. Paper made with 100% cotton rag for genuine artistic touch.

- **Fine Art Paper "Museum Etching" FA-ME1**  
Thick and rough surface with a soft and fine canvas-like texture which brings true-to-life photos. This natural white paper prints rich and deep blacks and is perfect for printing of black and white photo.
- **Fine Art Paper Photo Rag™ FA-PR1**  
Distinctive texture with soft homogenous surface, the paper faithfully reproduces the finest details of artwork and enhances image's sharpness and color saturation, presenting the photo with art-quality watercolor finish.

## Professional Photo Papers

Genuine photo media with multi-layer structure provide genuine texture and wider color range.

- **Photo Paper Pro Platinum PT-101**  
Featuring a unique chromogenic enhancer which amplifies subjected light, the paper is ideal for printing of images with rich and sophisticated color gradation such as sunrise or sunset, translucent glass texture, metallic-touch image or delicate skin tones.
- **Photo Paper Pro II PR-201**  
Base paper is adopting similar material as traditional photo paper, this glossy paper delivers exceptionally rich and beautiful color and is perfect for all types of color photo print outs.

## Extensive Use

A cost effective and convenient way to produce photos at home with quality exceeding traditional photo lab.

- **Photo Paper Plus Semi-Gloss SG-201**  
This velvety-textured photo paper is ideal for printing of high-contrast image such as night scenes. It preserves image details and colors in both highlight and shadow areas.
- **Photo Paper Plus Glossy II PP-201**  
With a unique coating, this photo paper can deliver richer shadow details and solid blacks. It is best for printing all types of photo, e.g. Lifestyle photo.

## "Everyday Use" Glossy Photo Paper GP-501

This vibrant glossy paper gives great prints in true-to-life color reproduction and is the economical choice for everyday photo prints.

## Creative Expression

Specialized photo paper for creative expression of your favorite photos.

- **Photo Paper Plus Double Sided PP-101D**  
Thick photo paper with satin finish on both sides for cost-saving and high quality 2-sided prints.
- **Photo Album Kit PAK-101**  
Get 2-sided photo prints and organize them in photo album for easy sharing and storage of your photo collection.
- **T-shirt Transfers TR-301**  
Prints on TR-301 can be ironed to make your own customized T-shirts.
- **Photo Stickers PS-101**  
With this 16-sticker photo paper, you can easily create your own stickers which carry your favorite memories.

## Business Use

- **High Resolution Paper HR-101N**  
It provides vivid and high resolution images and is suitable for high quality color printing in general.

## ORDER ONLINE AT CONSUMABLE EXPRESS : SAME DAY FREE DELIVERY SERVICE\*

Consumable Express is a FREE quick delivery service designed for ordering Canon original ink cartridge, toner, photo paper and ink paper set over HK\$100. If you place the order on [www.shop-canon.com.hk](http://www.shop-canon.com.hk) before 11:00am\* (except Saturday, Sunday and public holidays) successfully, you can receive the consumable in the afternoon of same day.

\*Consumable Express\* is not applicable to outlying islands and closed areas. Please read the details on Canon website.