

### Calculation Example /

計算範例 /

### Kalkulasi Contoh

CALCULATION	OPERATION	DISPLAY
<b>▼ Mixed</b>		123456789012
140-35+22=127	140 $\ominus$ 35 $\oplus$ 22 $\equiv$	( 127.00)
2x2 3=6	2 $\times$ 2 $\boxtimes$ 3 $\equiv$	( 6.00)
-7x9 9 =-63	7 $\boxtimes$ 9 $\boxtimes$ 9 $\boxtimes$ $\equiv$	( -63.00)
(2+4)÷3x8.1=16.2	2 $\oplus$ 4 $\div$ 3 $\times$ 8.1 $\equiv$	( 16.20)
<b>▼ Constant</b>		
2+3=5	2 $\oplus$ 3 $\equiv$	( 5.00)
4+3=7	4 $\oplus$ 3 $\equiv$	( 7.00)
1-2=-1	1 $\ominus$ 2 $\equiv$	( -1.00)
2-2=0	2 $\ominus$ 2 $\equiv$	( 0.00)
2x3=6	2 $\times$ 3 $\equiv$	( 6.00)
2x4=8	4 $\times$ 2 $\equiv$	( 8.00)
6÷3=2	6 $\div$ 3 $\equiv$	( 2.00)
9÷3=3	9 $\div$ 3 $\equiv$	( 3.00)
<b>▼ Power, Fraction</b>		
3 <sup>4</sup> =81	3 $\boxtimes$ 4 $\equiv$	( 81.00)
1/5=0.2	5 $\div$ 1 $\equiv$	( 0.20)
1/(2x3+4)=0.1	2 $\times$ 3 $\oplus$ 4 $\div$ 1 $\equiv$	( 0.10)
<b>▼ Square Root</b>		
$\sqrt{3}$ = 1.73205080756	3 $\sqrt{\square}$	( 1.73205080756)
<b>▼ Add Mode</b>		
\$14.90+\$0.35-\$1.45	1490 $\oplus$ 35 $\ominus$	
=13.80	145 $\equiv$	( 13.80)

CALCULATION	OPERATION	DISPLAY
		123456789012
<b>▼ Floating Calculation</b>		
8÷3x3.7+9	8 $\div$ 3 $\times$ 3.7 $\oplus$ 9 $\equiv$	( 18.8666666666)
<b>▼ Reciprocal Calculation</b>		
1/7=0.14285714285	7 $\div$ 1 $\equiv$	( 0.1429)
<b>▼ Round-off</b>		
11÷3=3.66666666666	11 $\div$ 3 $\equiv$	( 3.6667)
<b>▼ Round-down</b>		
11÷3=3.66666666666	11 $\div$ 3 $\equiv$	( 3.6666)
<b>▼ Percentage</b>		
1200x $\frac{12}{100}$ =144	1200 $\times$ 12 $\% \equiv$	( 144.00)
1200x $\frac{15}{100}$ =180	15 $\% \equiv$	( 180.00)
1200+(1200x20%)=1,440	1200 $\oplus$ 20 $\% \equiv$	( 1'440.00)
1200-(1200x20%)=960	1200 $\ominus$ 20 $\% \equiv$	( 960.00)
<b>▼ Memory</b>		
3x4= 12	3 $\times$ 4 $\text{M} \equiv$	(M 12.00)
-) 6÷0.2= 30	6 $\div$ 0.2 $\text{M} \equiv$	(M 30.00)
-18	$\text{M} \ominus$	(M -18.00)
+) 200	200 $\text{M} \oplus$	(M 200.00)
182	$\text{M}$ (Recall Memory)	(M 182.00)
	$\text{M}$ (Clear Memory)	( 182.00)
<b>▼ Grand total</b>		
30x40=1,200	30 $\times$ 40 $\text{GT} \equiv$	(GT 1'200.00)
50x60=3,000	50 $\times$ 60 $\text{GT} \equiv$	(GT 3'000.00)
+) 25x30= 750	25 $\times$ 30 $\text{GT} \equiv$	(GT 750.00)
4,950	$\text{GT}$	(GT 4'950.00)
+) 235x35=8,225	235 $\times$ 35 $\text{GT} \equiv$	(GT 8'225.00)
13,175	$\text{GT}$ (Grand Total)	(GT 13'175.00)
	$\text{GT}$ (Clear Grand Total)	( 13'175.00)

CALCULATION	OPERATION	DISPLAY
		123456789012
<b>▼ Tax Calculation</b>		
<b>Tax Rate Set</b>		
Tax Rate = 5%	5 $\text{SET TAX} \equiv$	( TAX% 5.)
<b>Add the Tax Amount</b>		
Price \$2,000 without tax	2000	( 2'000.)
Selling price with tax?	$\text{TAX} \oplus$	( TAX+ 2'100.00)
(\$2,100)	$\text{TAX} \oplus$	( TAX 100.00)
Tax = (\$100)		
<b>Deduct Tax Amount</b>		
Selling price \$3,150 with tax	3150	( 3'150.)
Price without tax? (\$3,000)	$\text{TAX} \ominus$	( TAX- 3'000.00)
Tax amount? = (\$150)	$\text{TAX} \ominus$	( TAX 150.00)
<b>Recall Tax Rate</b>	$\text{RECALL TAX} \equiv$	( TAX% 5.)
<b>▼ Overflow</b>		
1) 123456789x78900	123456789 $\times$ 78900 $\equiv$	(E 9.74074065210)
=9740740652100	$\text{E}$	( 9.74074065210)
(Error)		
2) 999999999999 (Add to Memory)	99999999999 $\text{M} \oplus$	(M 999'999'999'999.)
123 (Add to Memory)	123 $\text{M} \oplus$	(M 1.00000000012)
	$\text{M}$	(M 1.00000000012)
	$\text{CA}$	( 0.)
	$\text{CA}$	( 0.)
3) 6÷0=0	6 $\div$ 0 $\equiv$	(E 0.)
(Error)	$\text{E}$	( 0.)

### BATTERY

Battery: 1 Lithium battery (Type: CR2032)

### Replace battery

After replace the battery, press the [RESET] button.

After resetting be sure to set the tax rate again.

**CAUTION:** Risk of explosion if battery is replaced by an incorrect type dispose of used batteries according to the instruction.

### 電池

電池：1 顆鋰性電池（型號：CR2032）

### 更換電池

更換電池後，請按下 [RESET] 按鈕。

重新設定後，請務必再次設定稅率。

**注意：** 如果更換為不正確類型的電池，可能會有爆炸危險。請依指示棄置用過的電池。

### BATERE

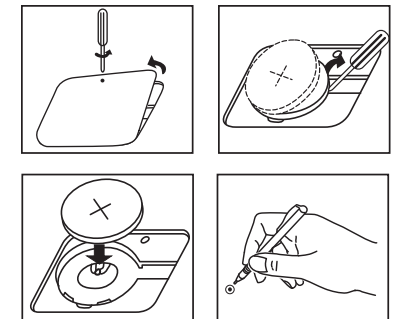
Batere: 1 batere Litium (Tipe: CR2032)

### Mengganti batere

Setelah batere diganti, tekan tombol [RESET].

Setelah direset, tetapkan kembali nilai pajak.

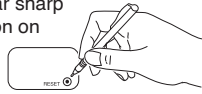
**Awas:** Risiko terjadi ledakan jika batere diganti dengan jenis yang berbeda. Buanglah batere bekas sesuai dengan petunjuk.



**POWER SUPPLY**

This calculator comes with a dual power source solar cell and lithium battery. The duration of a lithium battery depends entirely on individual usage.

- Electromagnetic interference or electrostatic discharge may cause the display to malfunction or the contents of the memory to be lost or altered. Should this occur, use the tip of a ball point pen (or similar sharp object) to press the [RESET] button on the back of the calculator. After resetting, be sure to set the tax rate again.

**DECIMAL POINT SELECTOR SWITCH**

- Used for designating the decimal point position (+ 4 3 2 1 0 F) for calculated results.
- (Add-mode)** – Addition and subtraction functions are performed with an automatic 2-digit decimal. It is convenient for currency calculations.
- F (Floating Decimal Point)** – All effective numbers up to 12 digits are displayed.

**ROUNDING SWITCH**

- Used for round-off [5/4], or round-down [↓] to the pre-selected decimal digits in the result.

**GRAND TOTAL FUNCTION**

- The totals are accumulated in the grand total memory. Press [GT] to get the grand total. Press [GT] successively to clear the grand total memory.

**TAX CALCULATION**

- Store the Tax Rate** – Press [CA] [SET TAX+] and enter the tax rate figure, then press [SET TAX+] to store.
- Recall the Tax Rate** – Press [CA] [RECALL TAX+] to recall the current tax rate.
- Add Tax Key** – Used for adding the tax amount to the displayed figure.
- Deduct Tax Key** – Used for deducting the tax amount from the displayed figure.

**OVERFLOW FUNCTION**

In the following cases, when "E" is displayed, the keyboard is electronically locked, and further operation is impossible.

Press [C] to clear the overflow.

The overflow function occurs when:

- The result or the memory content exceeds 12 digits to the left of the decimal point.
- Dividing by "0".

**SPECIFICATION**

Power Source: Solar cell and Lithium battery (CR2032 x 1)

Automatic power-off: approx. 7 minutes

Usable Temperature: 0°C to 40°C (32°F to 104°F)

Dimensions:

- TS-1200TG: 188mm (L) x 133mm (W) x 29mm (H)  
7-13/32" (L) x 5-15/64" (W) x 1-9/64" (H)
- HS-20TG: 164mm (L) x 105mm (W) x 33mm (H)  
6-29/64" (L) x 4-9/64" (W) x 1-19/64" (H)

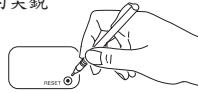
Weight: TS-1200TG: 241g (8.5 oz)  
HS-20TG: 152g (5.36 oz)

(Subject to change without notice)

**電源供應器**

此計算機採用雙電源。鋰電池的使用時間完全一個人的使用情況而定。

- 電磁干擾或靜電釋放可能會造成顯示幕故障，或記憶體中的內容遺失或修改。如果發生這種情況，請使用鋼筆的筆尖（或細小的尖銳物體）壓入計算機背面的重設 [RESET] 按鈕。重設之後，請務必再次設定稅率。

**小數點選擇器開關**

- 用於指定計算結果的小數點位置 (+ 4 3 2 1 0 F)。
- (加法模式) – 加法與減法功能會自動採用 2 位數小數點。這是為了方便貨幣計算。
- F (浮點小數點) – 可列印或顯示最多到 12 位數字的所有數字。

**四捨五入切換**

- 在計算結果中使用預先選擇的小數點數位來進行五入 [5/4]，或小數點刪除 [↓]。

**加總功能**

- 加總記憶體中將累計總金額。按下 [GT] 以取得總計。連續按下 [GT] 以清除總計記憶體。

**稅率計算**

- 儲存稅率** – 按下 [CA] [SET TAX+] 並輸入稅率數字，然後按下 [SET TAX+] 以儲存。
- 呼叫稅率** – 按下 [CA] [RECALL TAX+] 以呼叫目前稅率。
- 新增稅率按鍵** – 用於在顯示的數字中加入稅額。
- 扣除稅率按鍵** – 用於在顯示的數字中扣除稅額。

**溢滿功能**

在以下情況下，當顯示 "E" 時，將以電子方式鎖定鍵盤，且無法再進行任何操作。按下 [C] 以清除溢滿。

當出現以下情形時，就會發生溢滿：

- 計算結果或記憶內容的小數點左方數字超過 12 位數。
- 除以 "0"。

**規格**

電力來源：太陽能電池與鋰電池 (CR2032 x 1)

自動關機：大約 7 分鐘

操作溫度：0°C 至 40°C (32°F 至 104°F)

尺寸：

- TS-1200TG: 188mm (長) x 133mm (寬) x 29mm (高)  
7-13/32" (長) x 5-15/64" (寬) x 1-9/64" (高)
- HS-20TG: 164mm (長) x 105mm (寬) x 33mm (高)  
6-29/64" (長) x 4-9/64" (寬) x 1-19/64" (高)

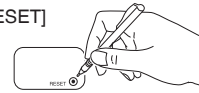
重量：TS-1200TG: 241 公克 (8.5 盎司)  
HS-20TG : 152 公克 (5.36 盎司)

(如有變更，恕不另行通知)

**CATU DAYA**

Catu daya kalkulator ini berasal dari dua sumber tenaga. Umur batere Litium sangat tergantung pada pemakaian.

- Gangguan elektromagnetik atau pelepasan muatan elektrostatik dapat merusak tampilan atau menyebabkan isi memori hilang atau berubah. Apabila hal ini terjadi, gunakan ujung bolpoin (atau benda tajam serupa) untuk menekan tombol [RESET] di bagian belakang kalkulator. Setelah direset, pastikan untuk mereset nilai pajak.

**SAKLAR PEMILIH TITIK DESIMAL**

- Digunakan untuk mengatur posisi titik desimal (+ 4 3 2 1 0 F) untuk hasil kalkulasi.
- (Mode-Menjumlahkan)** – Fungsi penjumlahan dan pengurangan dilakukan sampai dengan 2-digit desimal otomatis. Fungsi ini mudah dilakukan untuk kalkulasi mata uang.
- F (Titik Desimal Floating)** – Semua angka tercetak atau ditampilkan sampai dengan 12 digit angka.

**SAKLAR PEMBULATAN**

- Digunakan untuk pembulatan [5/4], atau pembulatan ke bawah [↓] terhadap digit desimal yang telah dipilih sebelumnya pada hasil.

**FUNGSI GRAND TOTAL**

- Akumulasi jumlah total disimpan di dalam memori grand total. Tekan [GT] untuk mendapatkan jumlah total. Tekan [GT] secara berurutan menghapus memori grand total.

**KALKULASI PAJAK**

- Menyimpan Nilai Pajak** – Tekan [CA] [SET TAX+] dan masukkan angka nilai pajak, selanjutnya tekan [SET TAX+] untuk menyimpan.
- Memanggil Kembali Nilai Pajak** – Tekan [CA] [RECALL TAX+] untuk memanggil kembali nilai pajak saat ini.
- Tombol Menambahkan Pajak** – Digunakan untuk menambahkan jumlah pajak pada angka yang ditampilkan.
- Tombol Memotong Pajak** – Digunakan untuk memotong jumlah pajak dari angka yang ditampilkan.

**FUNGSI OVERFLOW**

Di dalam kasus berikut, apabila muncul tampilan "E", papan tombol yang terkunci secara elektronik, dan operasi lebih lanjut adalah mustahil. Tekan [C] untuk menghapus overflow. Fungsi overflow terjadi manakala:

- Hasil isi memori lebih dari 12 digit ke kiri titik desimal.
- Dibagi dengan "0".

**SPESIFIKASI**

Sumber Daya: Sel matahari dan batere Litium (CR2032 x 1)

Catu Daya Mati Otomatis: lebih kurang 7 menit

Suhu Operasi: 0°C sampai 40°C (32°F sampai 104°F)

Dimensi:

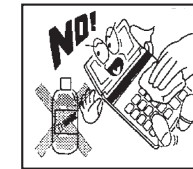
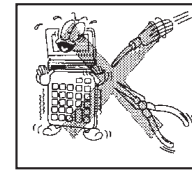
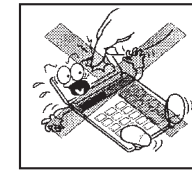
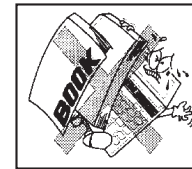
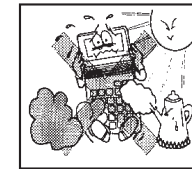
- TS-1200TG: 188mm (L) x 133mm (P) x 29mm (T)  
7-13/32" (L) x 5-15/64" (P) x 1-9/64" (T)
- HS-20TG: 164mm (L) x 105mm (P) x 33mm (T)  
6-29/64" (L) x 4-9/64" (P) x 1-19/64" (T)

Berat: TS-1200TG: 241g (8.5 oz)  
HS-20TG: 152g (5.36 oz)

(Dapat berubah tanpa pemberitahuan)

**Taking Care Of Your Calculator /**

請愛護您的計算機 /

**Merawat Kalkulator Anda**

**CANON ELECTRONIC BUSINESS MACHINES (H.K.) CO., LTD.**

17/F., Tower One, Ever Gain Plaza, Tower One, 82-100 Container Port Road, Kwai Chung, New Territories, Hong Kong

**ABILITY SHI-PRO CO., LTD.**

No. 10, Alley 6, Lane 141, Fu-Shing North Road Taipei, Taiwan, 105 R.O.C.

**DAI PHONG TRADING CO., LTD.**

A25 Cao Thang Prolong St., Ward 12, Dist. 10 HCMC, Vietnam  
Tel : 848-8622449 ~ 451 Fax : 848-2650603

E-mail : nguyen.thanh.tam@abico.com.vn

Website : http://www.abico.com.vn

**SOLID BUSINESS MACHINES CENTER INC.**

Suite 303, Singson Building Plaza Moraga, Binonda, Manila, Philippines

**WELLTECH GROUP CO., LTD.**

13/27, 15/28, Moo 9 Kaset-Naramintra Road, Klongkum, Bungkum, Bangkok 10230, Thailand

**CANON MARKETING (MALAYSIA) SDN BHD.**

Block D, Peremba Square, Saujana Resort, Section U2, 40150 Shan Alam, Selangor Darul Ehsan, Malaysia

**CANON KOREA BUSINESS SOLUTIONS INC.**

#168-12, Samsong-dong, Gangnam-gu, Seoul, Korea

**CANON AUSTRALIA PTY, LTD.**

1 Thomas Holt Drive, North Ryde, Sydney, N.S.W. 2113, Australia