

## 在 Mac OS 以 Wi-Fi 連接安裝 G6070 驅動程式步驟 G6070 printer driver Installation Guide for Mac OS via Wi-Fi

\*請開啟打印機並確保電腦已連接互聯網

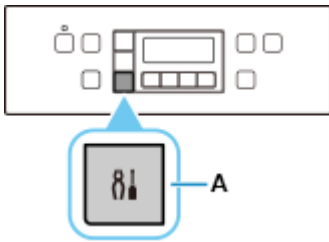
\*Please turn on the printer and make sure computer already connected to the internet

連接印表機至無線網路路由器

Connect printer to Wi-Fi router

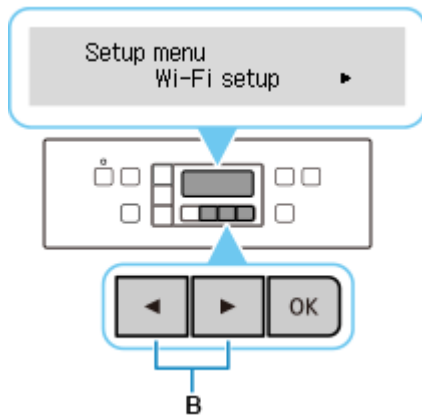
1. 按**設定(Setup)**按鈕(A)。

Press the Setup button (A).



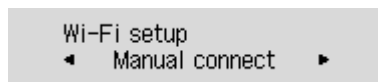
2. 使用◀或▶按鈕(B)選擇**Wi-Fi 設定(Wi-Fi setup)**並按**OK**按鈕。

Use the Left or Right button (B) to select Wi-Fi setup and press the OK button.



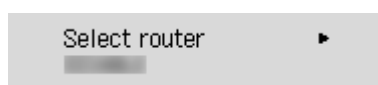
3. 選擇**手動連接(Manual connect)**並按**OK**按鈕。

Select Manual connect and press the OK button.



4. 選擇無線路由器並按**OK**按鈕。

Select your wireless router and press the OK button.



- 按 **OK** 按鈕。

Press the OK button.

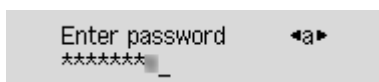


- 輸入密碼。文字輸入區分大小寫。

關於如何輸入字元和如何變更字元類型，請參見「[文字輸入](#)」(在新視窗中顯示)。

Enter the password. Text entry is case-sensitive.

For how to enter characters and how to change the character type, see "[Text Entry](#)" (appears in a new window).



如果不知道所用無線路由器的密碼，請參見無線路由器手冊或聯絡其製造商。

如果出現「**已連接(Connected)**」，則網路不需要密碼。從步驟 7 繼續。

If you don't know the password for your wireless router, see the wireless router manual or contact its manufacturer.

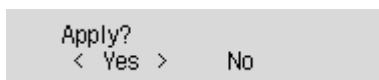
If "Connected" appears, the network does not require a password. Continue from step 7.

- 輸入後，按住 **OK** 按鈕至少 2 秒鐘。

After entry, press and hold the OK button for at least two seconds.

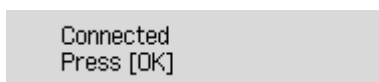
- 選擇**是(Yes)**並按 **OK** 按鈕。

Select Yes and press the OK button.



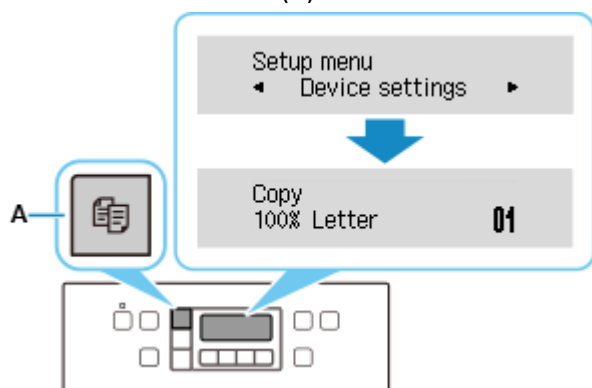
- 顯示下方的螢幕時，請按 **OK** 按鈕。

When the screen on the below appears, press the OK button.



- 按**影印(COPY)**按鈕(A)。

Press the COPY button (A).



網路連接設定完成。

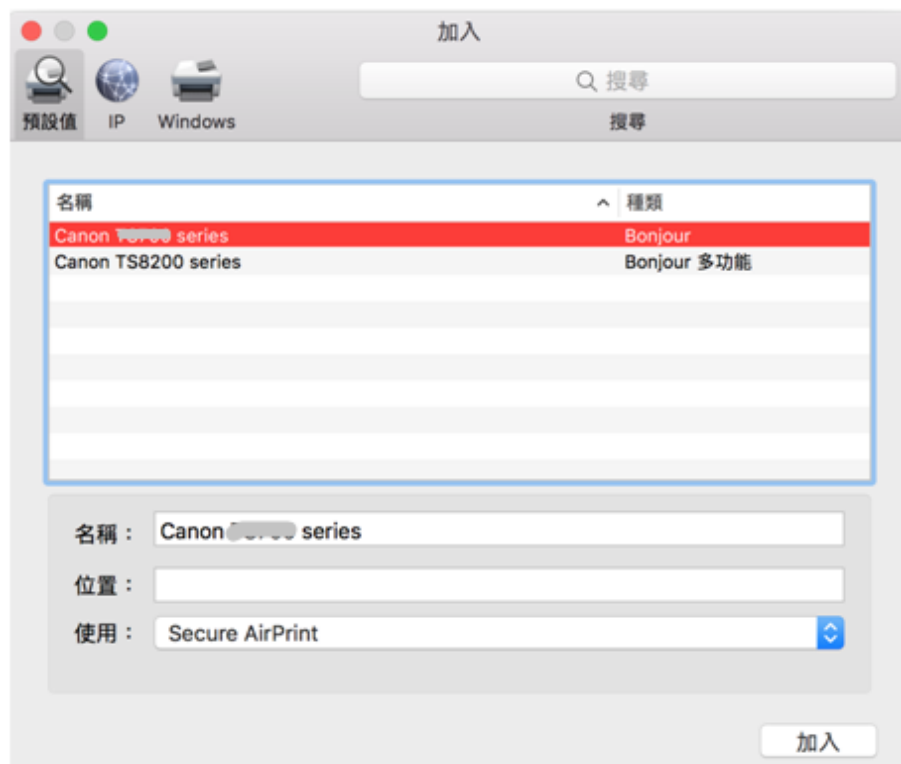
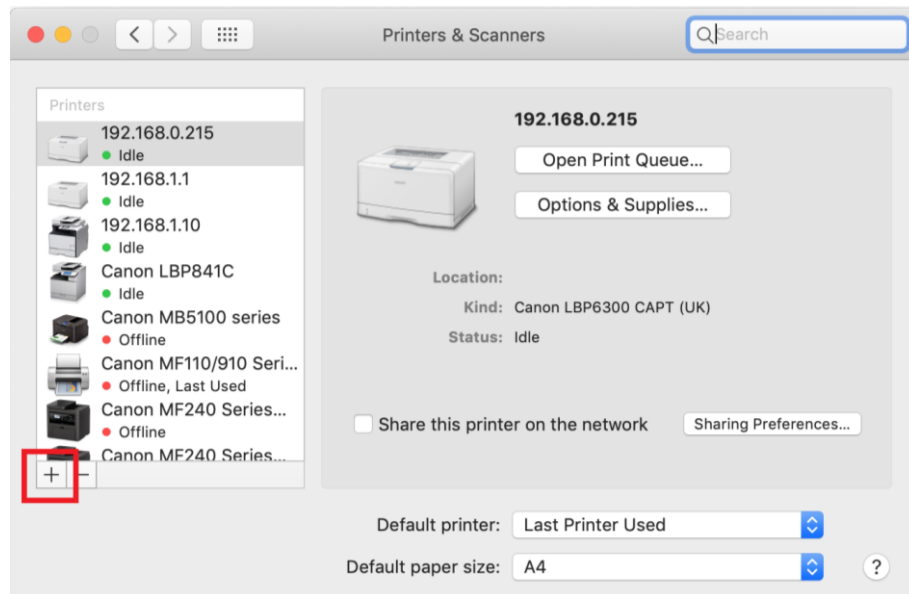
The network connection setup is now complete.

## Mac安裝步驟

### Mac installation procedure

1. 在Mac電腦上，點選左上角的蘋果圖示，選擇**系統偏好設定**>**印表機與掃描器**，再點選左下角的「+」進入下圖的新增印表機視窗。選擇印表機「Canon G6000 Series」（種類為Bonjour），確定「使用」為「Secure AirPrint」，然後按「加入」

On the Mac system, click the Apple icon on the top left corner, then choose “**System Preferences**” > “**Printers and Scanners**”. Click the “+” icon on the bottom left corner, then choose name as “Canon G6000 series” (Kind: Bonjour), and make sure “Secure AirPrint” in “Use” column , and then click “Add”



## 掃描程式 IJ Scan Utility Lite 的安裝步驟

### Setup procedure of IJ Scan Utility Lite

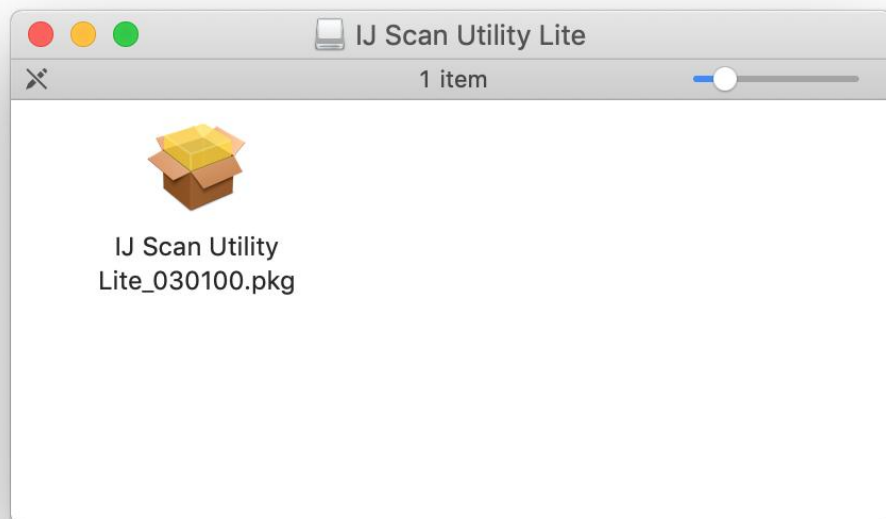
點擊以下連結下載 “IJ Scan Utility Lite” :

<https://hk.canon/hong-kong/en/support/0200531730/9>

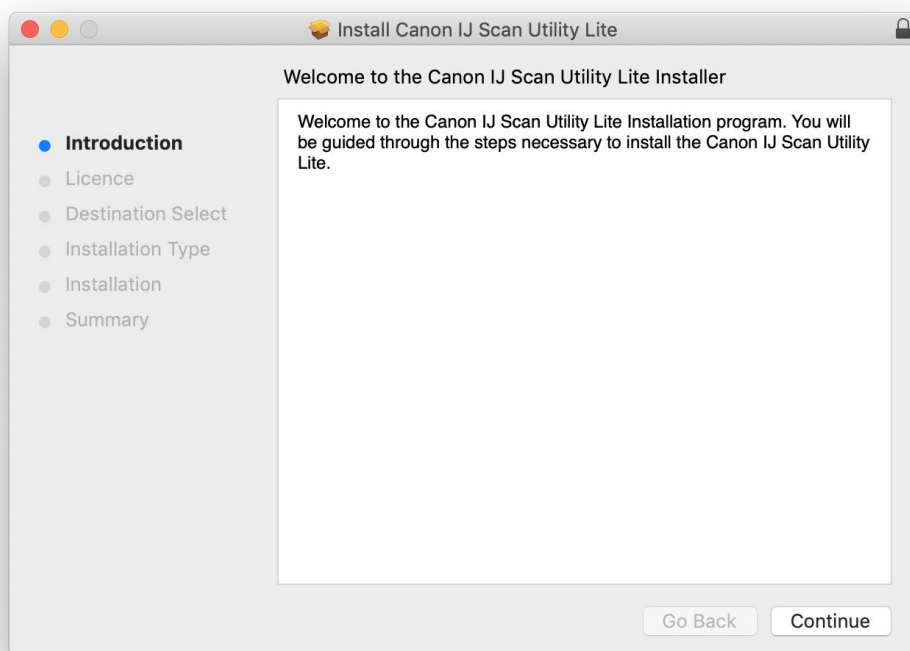
Click the link below to download “IJ Scan Utility Lite” :

<https://hk.canon/hong-kong/en/support/0200531730/9>

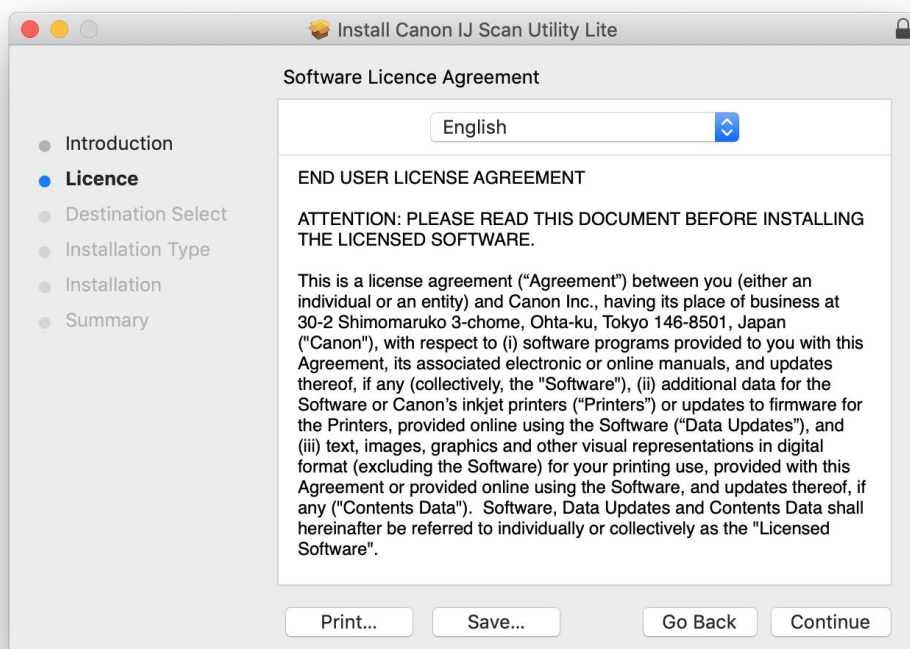
1. 按一下 “Download” ，下載完成後開啟該檔案安裝  
Click “Download”, and open the file after download completed
2. 下載完成後開啟該檔案，按「IJ Scan Utility Lite\_xxxxxx.pkg」  
Open file after download finished, press “IJ Scan Utility Lite\_xxxxxx.pkg”



3. 按“繼續”  
Click “Continues”

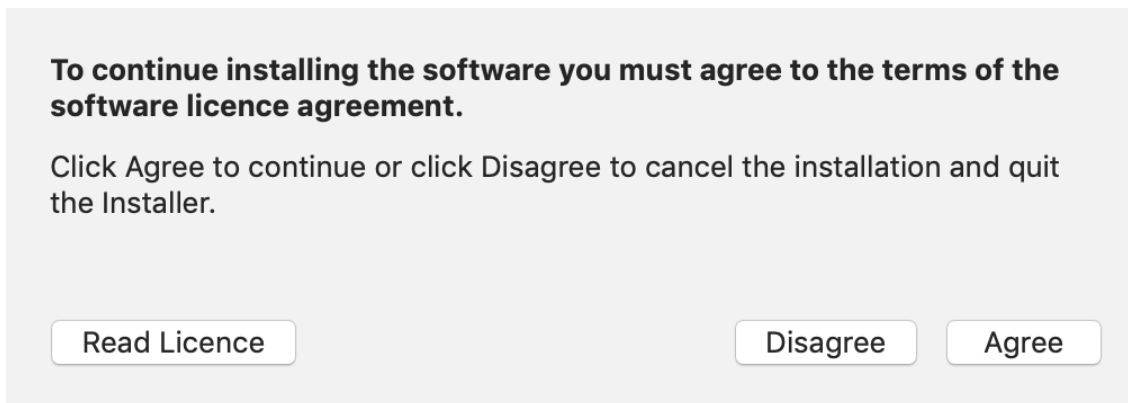


4. 按“繼續”  
Click “Continues”



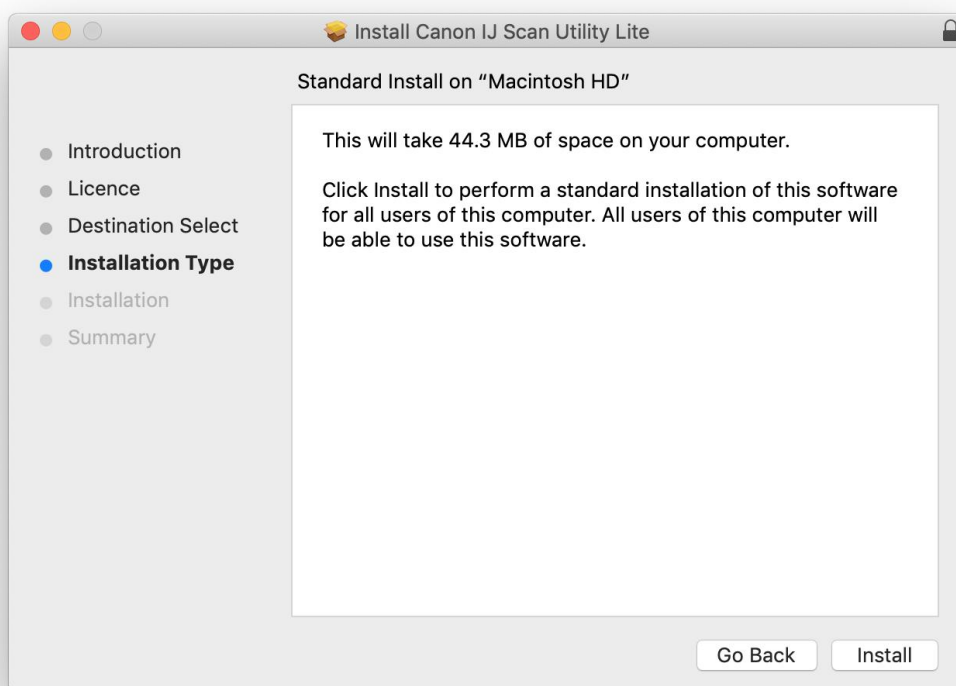
5. 按“同意”

Click “Agree”



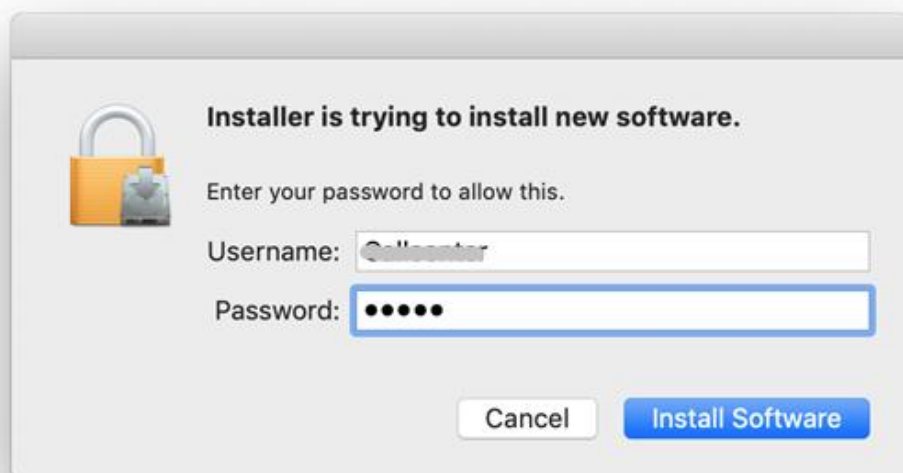
6. 按“安裝”

Click “Install”



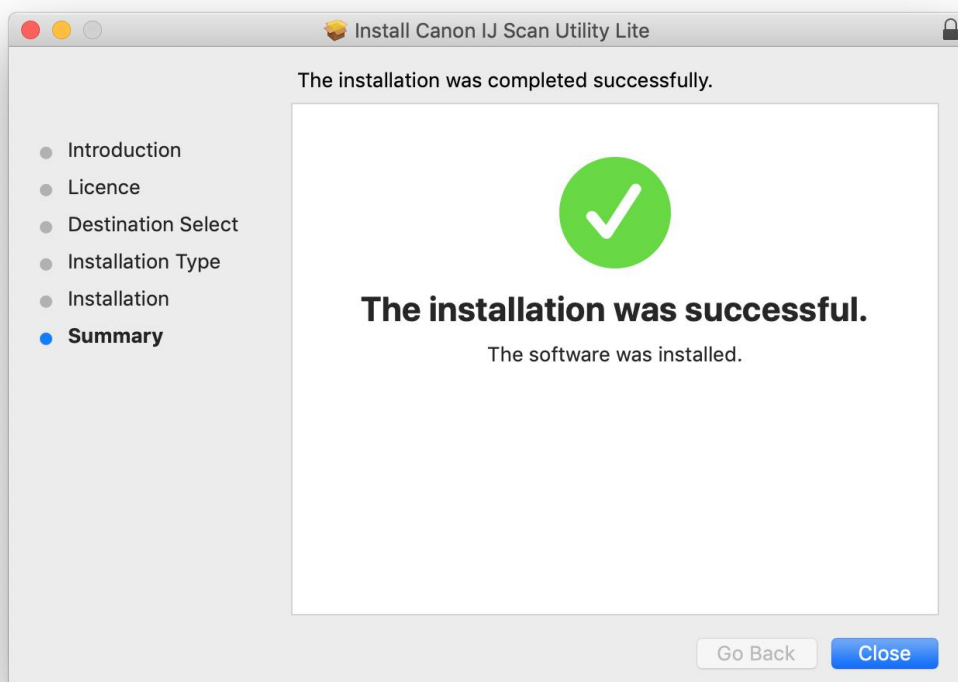
7. 如出現以下畫面，請輸入「登入名稱」和「密碼」

If the following screen appears, please enter the "Username" and "Password"



8. 掃描程式安裝完成，按“關閉”

Software installation is completed. click "Close"



-完-

-End-