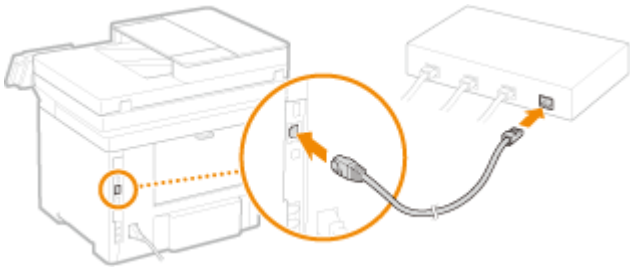


透過乙太網路連接安裝 MF269dw 印表機的驅動程式步驟 (以 Win 10 作示範)
MF269dw printer driver Installation Guide for Windows via LAN connection (Win 10 as example)

****使用乙太網路連接線接駁到印表機及開啟印表機****

****Connect the machine to a router by using a LAN cable and turn on computer****



先將打印機連接到網路，詳細可參考以下步驟

Connect printer to network first, please refer to following procedure

1. 開啟印表機
Turn on the printer
2. 在主畫面中點選「功能表」
Tap "Menu" in the Home Screen
3. 點選「網路設定」
Tap "Network Settings"
4. 點選「選擇有線/無線區域網路」
Tap "Select Wired / Wireless LAN"
5. 點選 <有線區域網路>
Tap "Wired LAN"

下載及安裝步驟

Driver download and Installation procedure

1. 按以下網址下載驅動程式：

如電腦使用 Windows 64 位元系統，請下載：

<https://support-hk.canon-asia.com/contents/HK/EN/0100973401.html>

如電腦使用 Windows 32 位元系統，請下載：

<https://support-hk.canon-asia.com/contents/HK/EN/0100973301.html>

Click the link(s) below to download the printer driver:

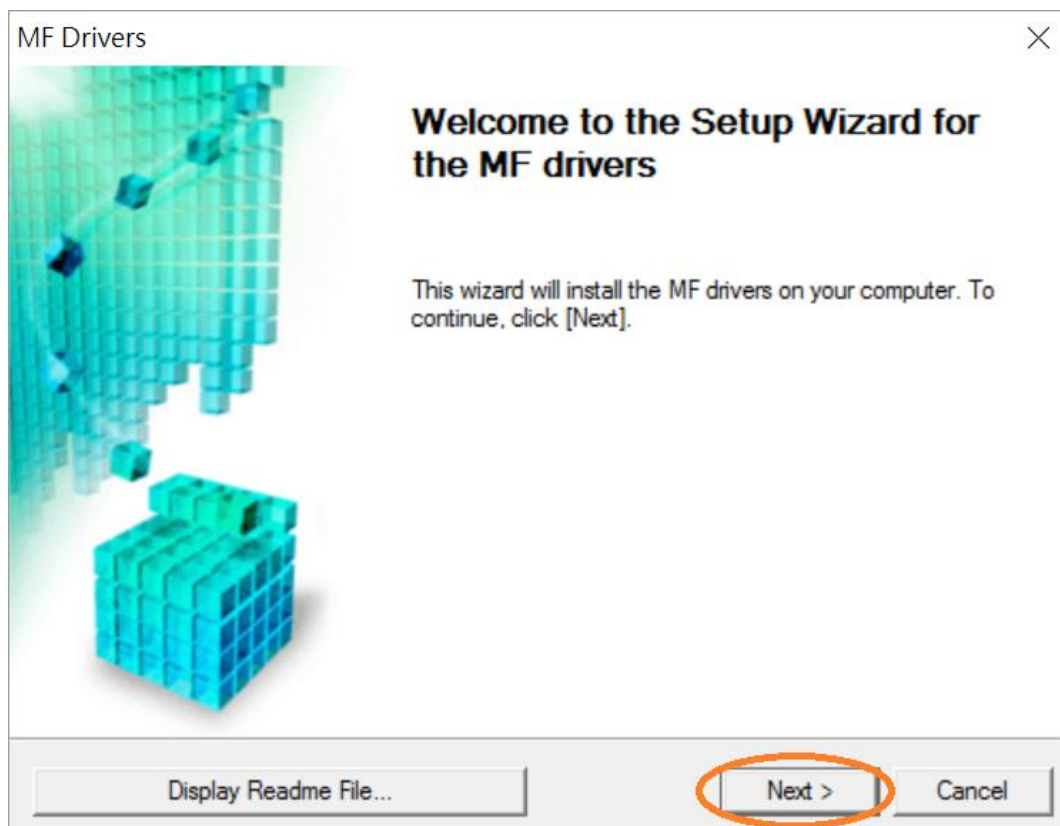
If computer is running Windows 64 bit system, please click the link below:

<https://support-hk.canon-asia.com/contents/HK/EN/0100973401.html>

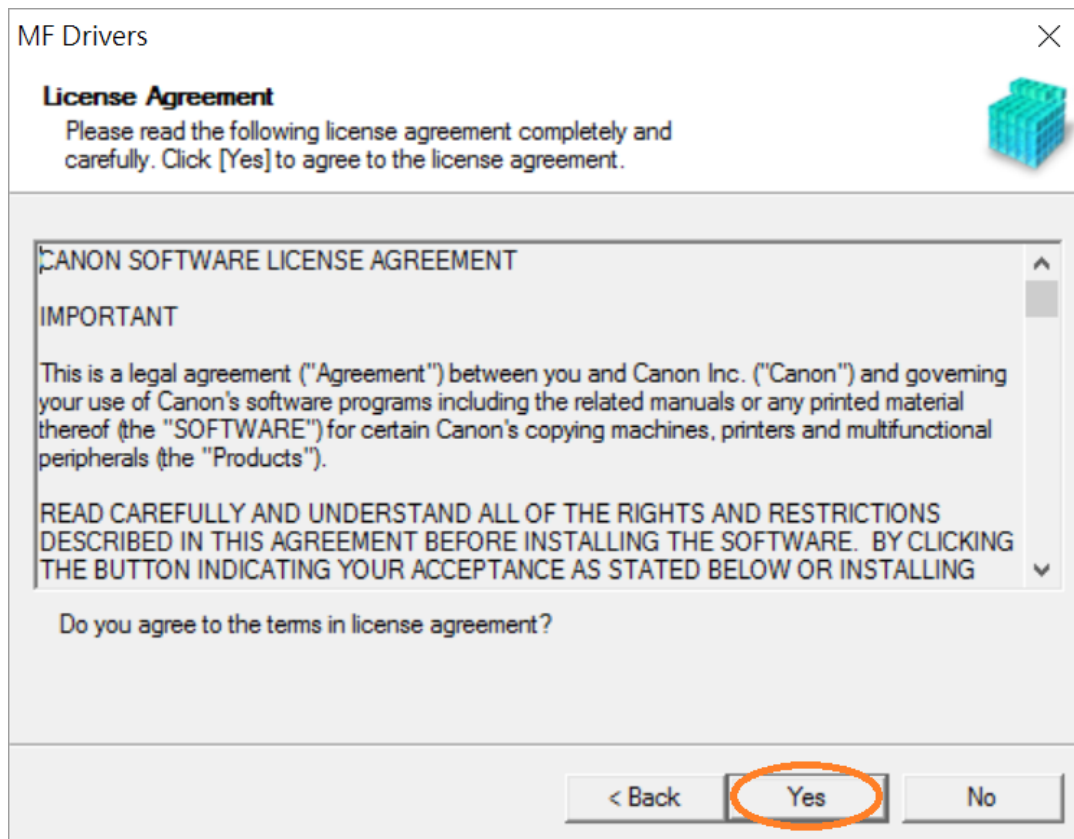
If computer is running Windows 32 bit system, please click the link below:

<https://support-hk.canon-asia.com/contents/HK/EN/0100973301.html>

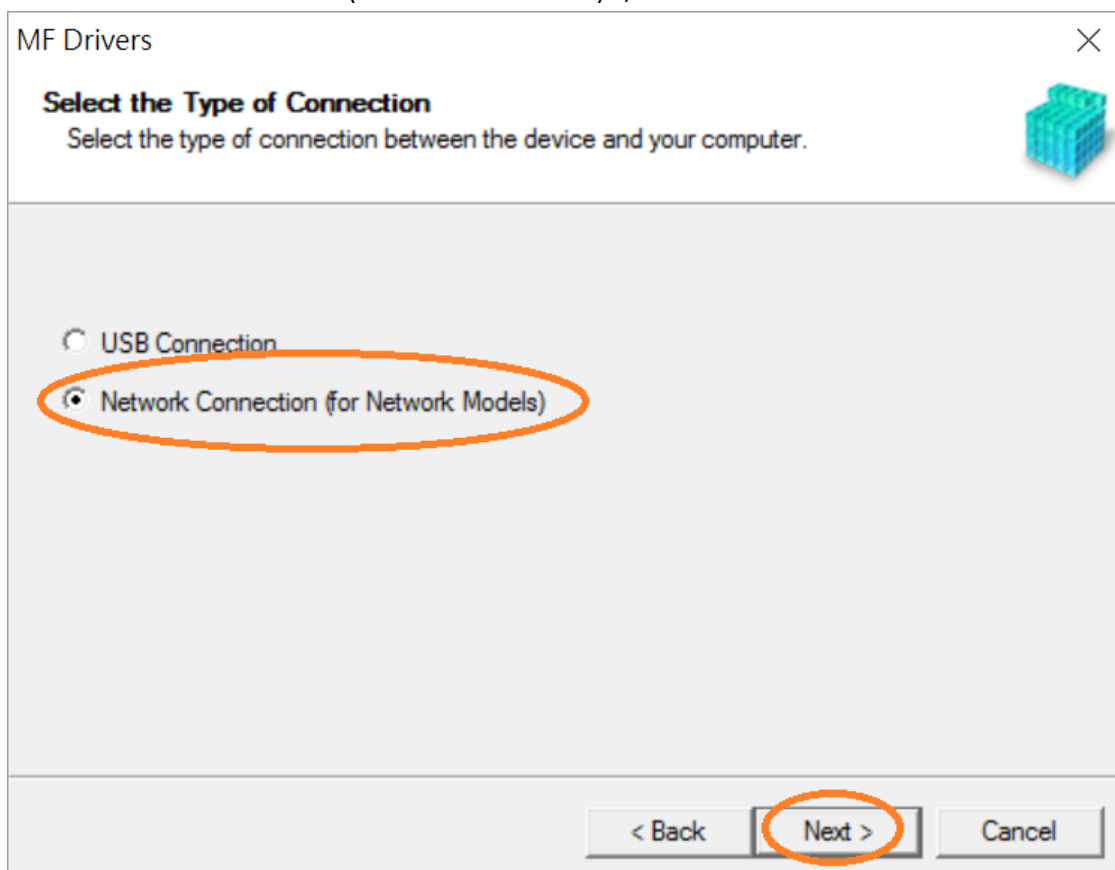
2. 下載完成後，打開驅動程式安裝檔案
Open driver installation file after downloaded
3. 按「Next >」
Click "Next >"



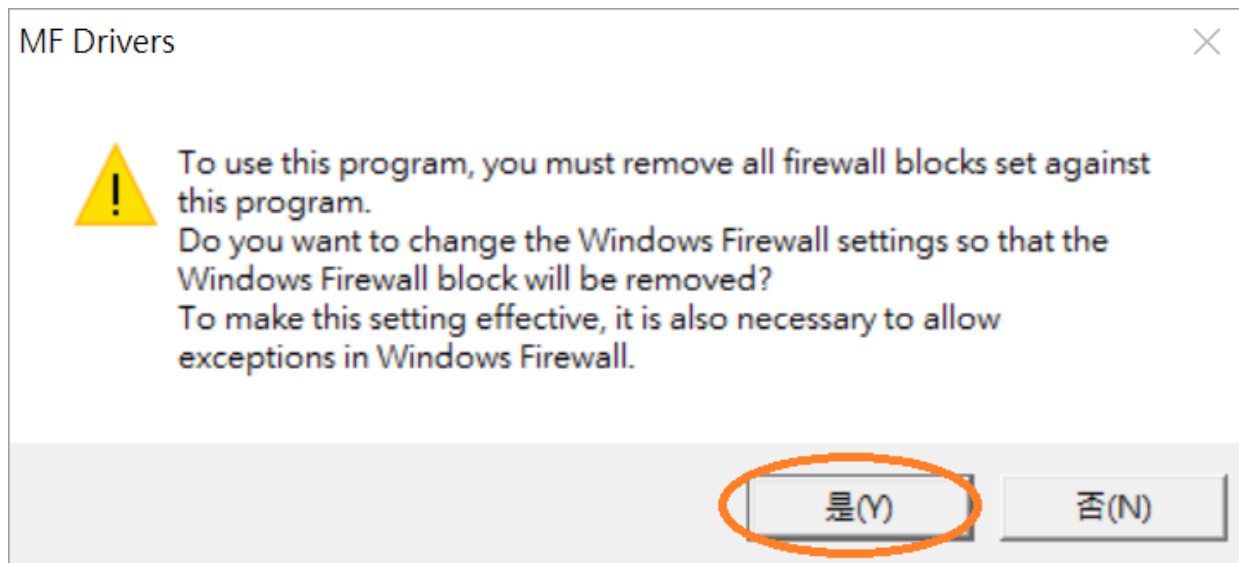
4. 按「Yes」
Click "Yes"



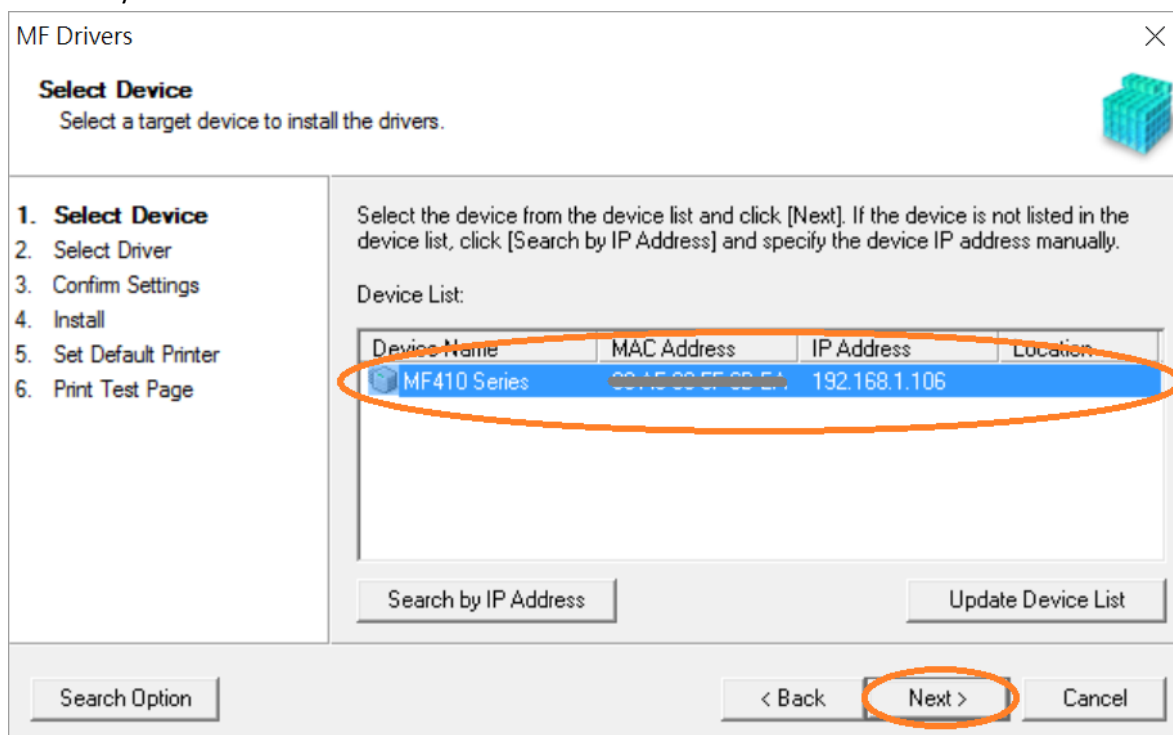
5. 選擇「Network Connection (for Network Models)」，按「Next >」
Select "Network Connection (for Network Models)", click "Next >"



6. 按「是」
Click "Yes"



7. 選擇「MF260 Series」（以 MF410 Series 為例子），按「Next >」（如清單沒有印表機，請選「Search by IP Address」方法連接或聯絡客戶服務熱線 31912333 尋求支援）
Select "MF260 Series" (MF410 Series as example), click "Next >" (If there is no printer on the list, please select "Search by IP Address" method to connect or contact customer service hotline 31912333 to seek for support)



8. 確認已剔選「Printer」、「Fax (for Supported Models)」、「Scanner」（以 MF410 Series 為例子），按「Next >」

Confirm the “Printer” “Fax for Supported Models” “Scanner” box is checked(MF410 Series as example), click “Next >”

MF Drivers

Select Driver
Select the drivers to install.

1. Select Device
2. **Select Driver**
3. Confirm Settings
4. Install
5. Set Default Printer
6. Print Test Page

Target Device
MF410 Series

Driver to Install:

Printer
 Fax (for Supported Models)
 Scanner

Canon Driver Information Assist Service
When you install this service and use shared or local printers, functions that allow you to obtain device information will be added to your computer.

< Back **Next >** Cancel

9. 選擇「UFR II Printer Driver」（以 MF410 Series 為例子），按「Next >」

Select “UFR II Printer Driver” (MF410 Series as example), click “Next >”

MF Drivers

Select Driver
Select the drivers to install.

1. Select Device
2. **Select Driver**
3. Confirm Settings
4. Install
5. Set Default Printer
6. Print Test Page

Target Device
MF410 Series

Printer Drivers to Install:

UFR II Printer Driver
 PCL6 Printer Driver
 PS3 Printer Driver

< Back **Next >** Cancel

10. 按「Next >」(以 MF410 Series 為例子)

Click "Next >" (MF410 Series as example)

MF Drivers

Confirm Settings
Confirm the following setting details.

1. Select Device
2. Select Driver
3. Confirm Settings
4. Install
5. Set Default Printer
6. Print Test Page

You can change the printer name. If you specify this printer as a shared printer, you can specify the shared printer name and set an additional driver (alternate driver). Confirm the settings, and then click [Next].

Printer

Port: CNMFNP_00A0000F000E
Driver: Canon MF410 Series UFR II
Printer Name: Canon MF410 Series UFR II

Use as Shared Printer
Shared Name:

Drivers to Add...

Current Device: 1
Number of Devices to Set: 2

< Back **Next >** Cancel

11. 按「Next >」(以 MF410 Series 為例子)

Click "Next >" (MF410 Series as example)

MF Drivers

Confirm Settings
Confirm the following setting details.

1. Select Device
2. Select Driver
3. Confirm Settings
4. Install
5. Set Default Printer
6. Print Test Page

You can change the fax name. If you specify this fax as a shared fax, you can specify the shared fax name and set an additional driver (alternate driver). Confirm the settings, and then click [Next].

Fax

Port: CNMFNP_00A0000F000E
Driver: Canon Generic FAX Driver (FAX)
Fax Name: Canon MF410 Series (FAX)

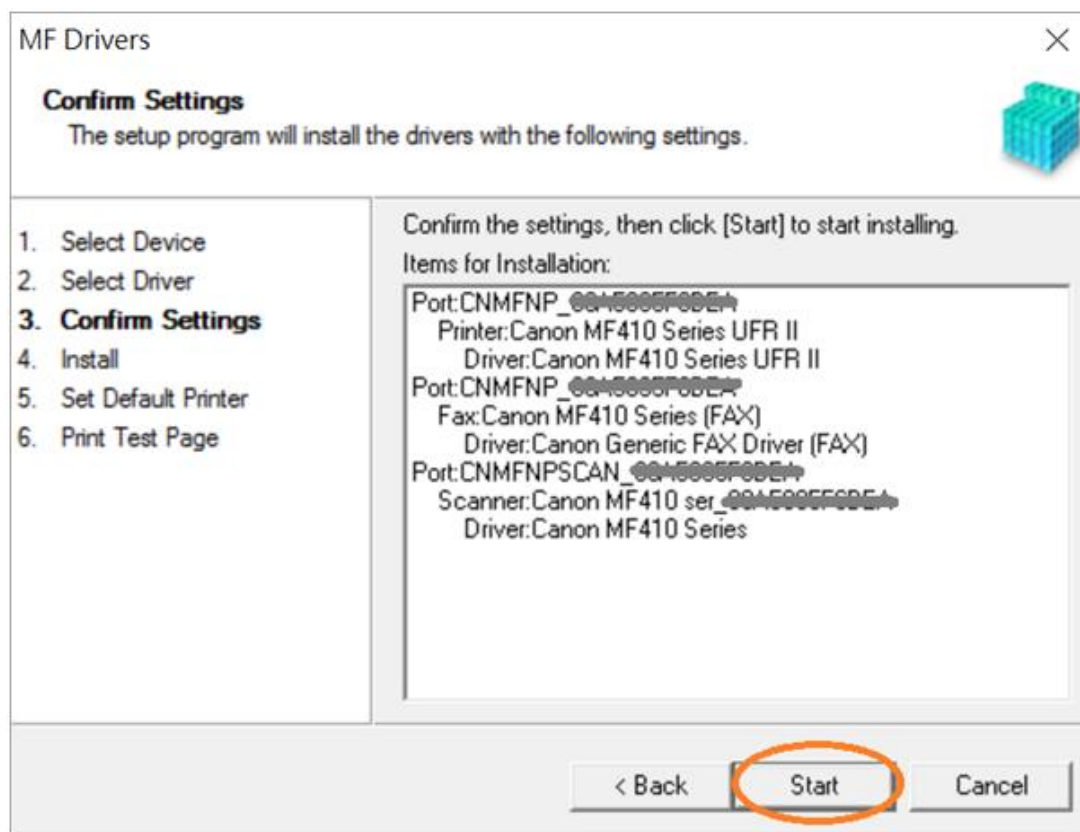
Use as Shared Fax
Shared Name:

Drivers to Add...

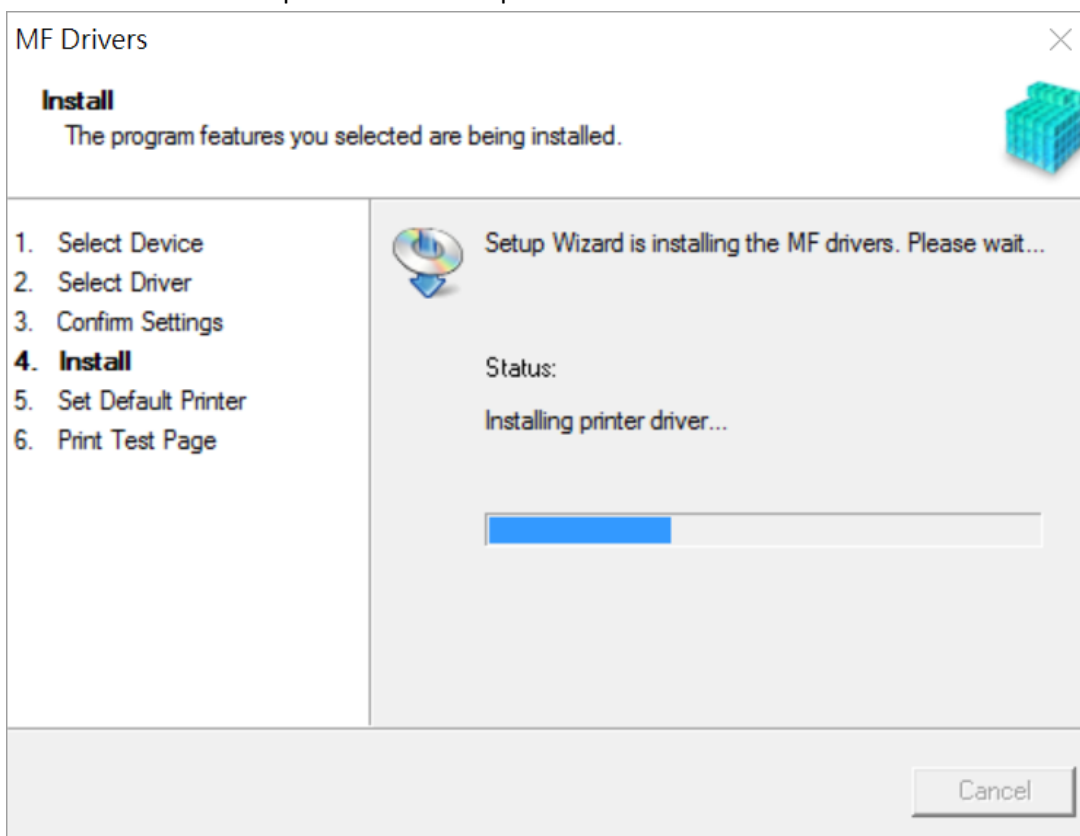
Current Device: 2
Number of Devices to Set: 2

< Back **Next >** Cancel

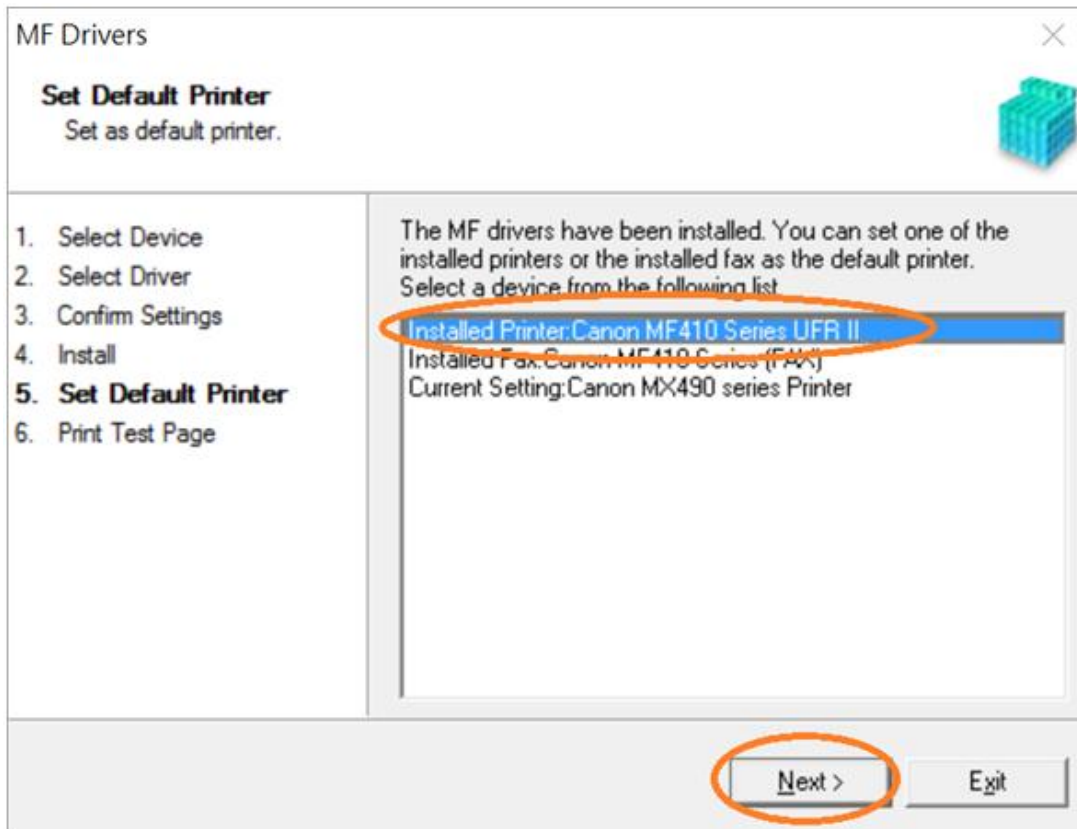
12. 按「Start」（以 MF410 Series 為例子）
Click “Start>” (MF410 Series as example)



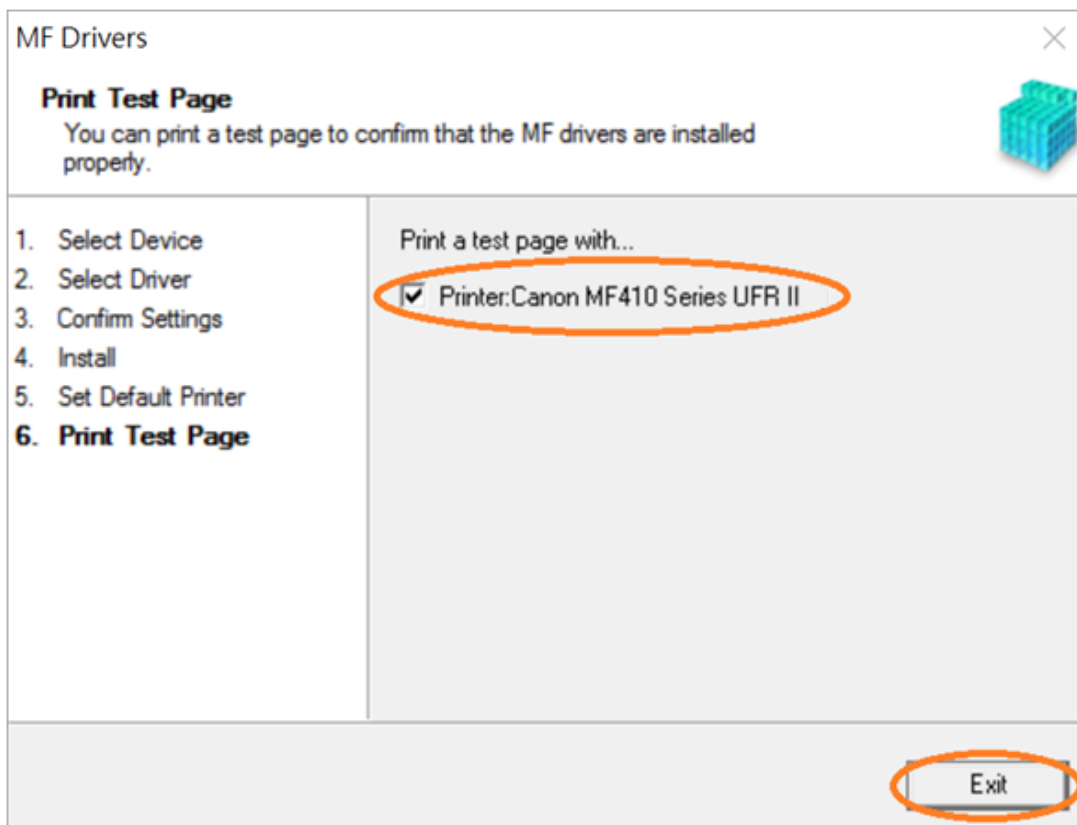
13. 請等待安裝精靈成完安裝
Please wait for the setup wizard to accomplish installation



14. 選擇「Installed Printer: Canon MF260 Series UFR II」（以 MF410 Series 為例子），按「Next >」
Select “Installed Printer: Canon MF260 Series UFR II” (MF410 Series as example), click “Next >”



15. 可剔選「Printer: Canon MF260 Series UFR II」以（MF410 Series 為例子）進行列印測試頁，按「Exit」
Can check the box at “Printer: Canon MF260 Series UFR II” (MF410 Series as example) to print a test page, click “Exit”

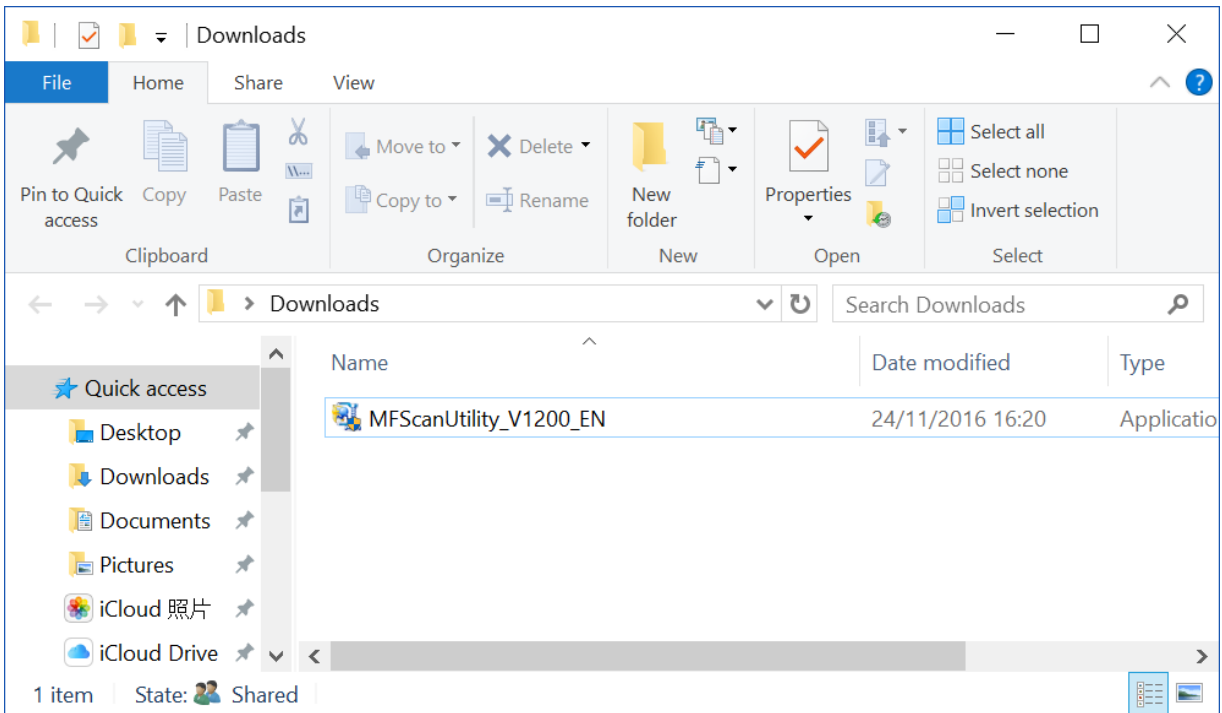


16. 到佳能網站 <https://support-hk.canon-asia.com/contents/HK/EN/0200563204.html> 下載掃描軟件 MF Scan Utility

Go to <https://support-hk.canon-asia.com/contents/HK/EN/0200563204.html> to download the scanner software MF Scan Utility

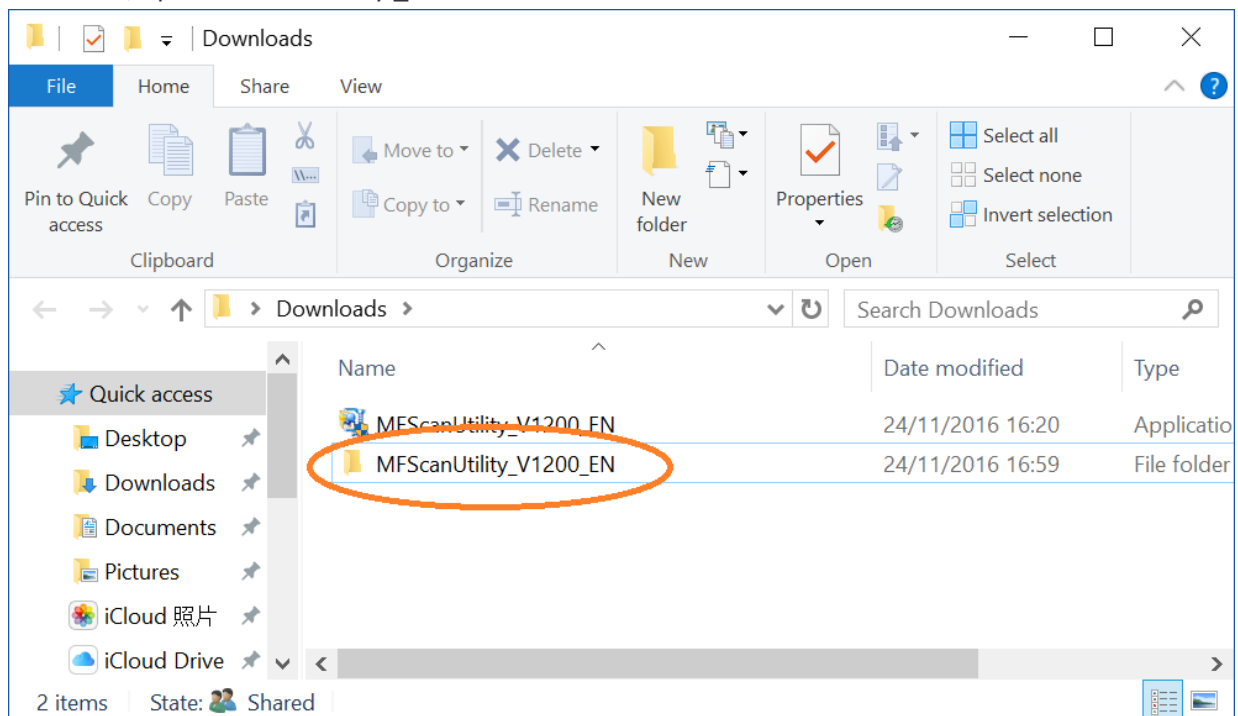
17. 下載的文件以自解壓縮檔檔案（.exe 格式）保存在指定的文件夾中

The self extractor file (.exe format) is saved to specified folder



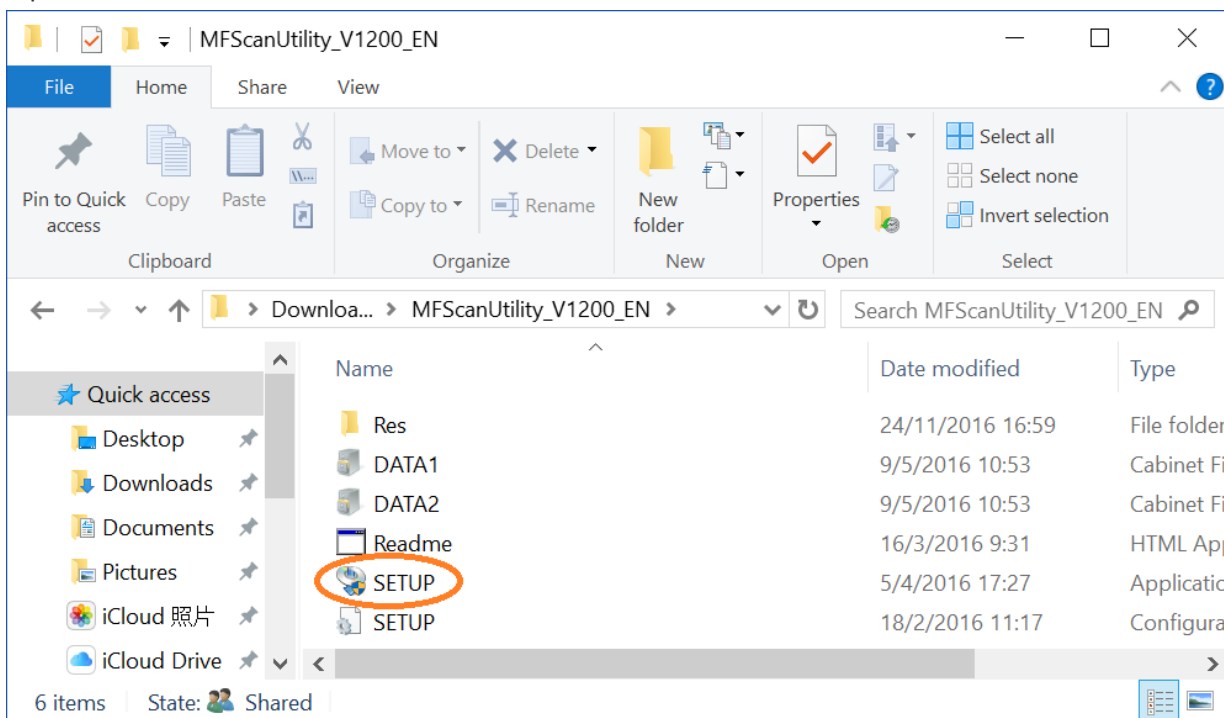
18. 打開「MFScanUtility_***.exe」檔案。將在同一文件夾中創建新文件夾，如打開文件解壓縮時出現「使用者帳戶控制」選項，按「是」，打開「MFScanUtility_***」文件夾

Open "MFScanUtility_***.exe" file, a new folder will be created. If "User Account Control" window pops up, click "Yes", open "MFScanUtility_***" file folder



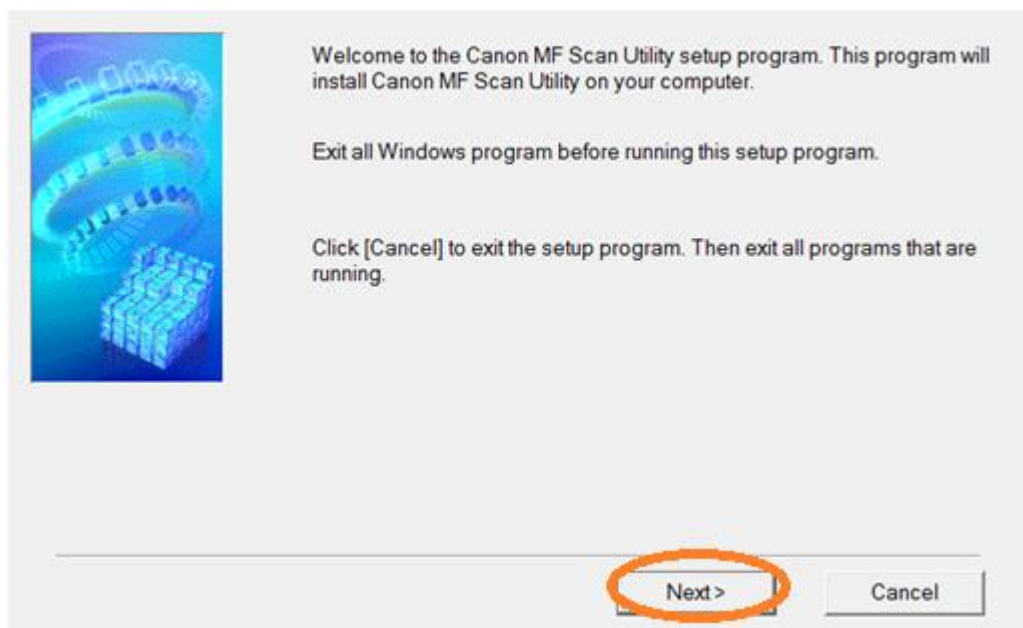
19. 開啓「SETUP.exe」檔案

Open "SETUP.exe" file

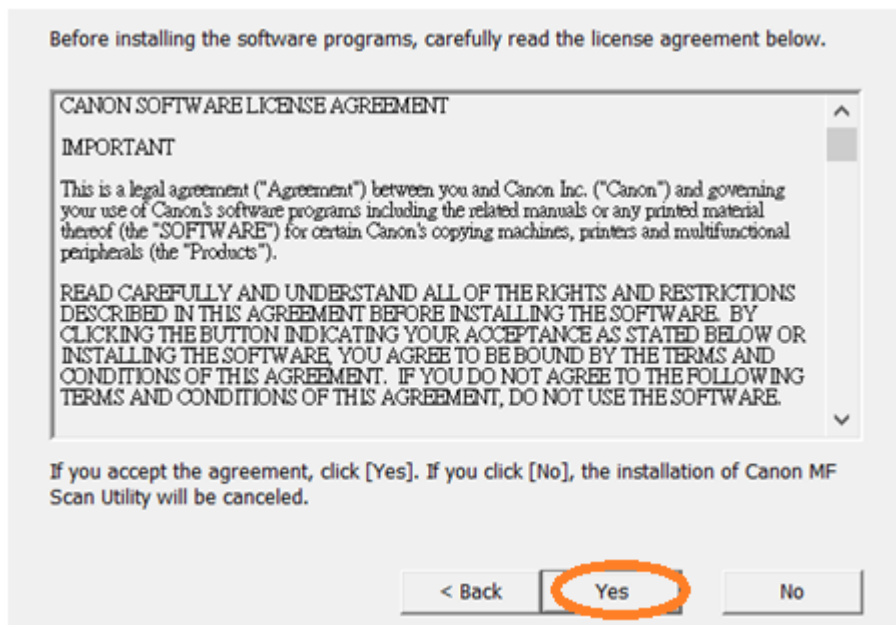


20. 按「Next >」

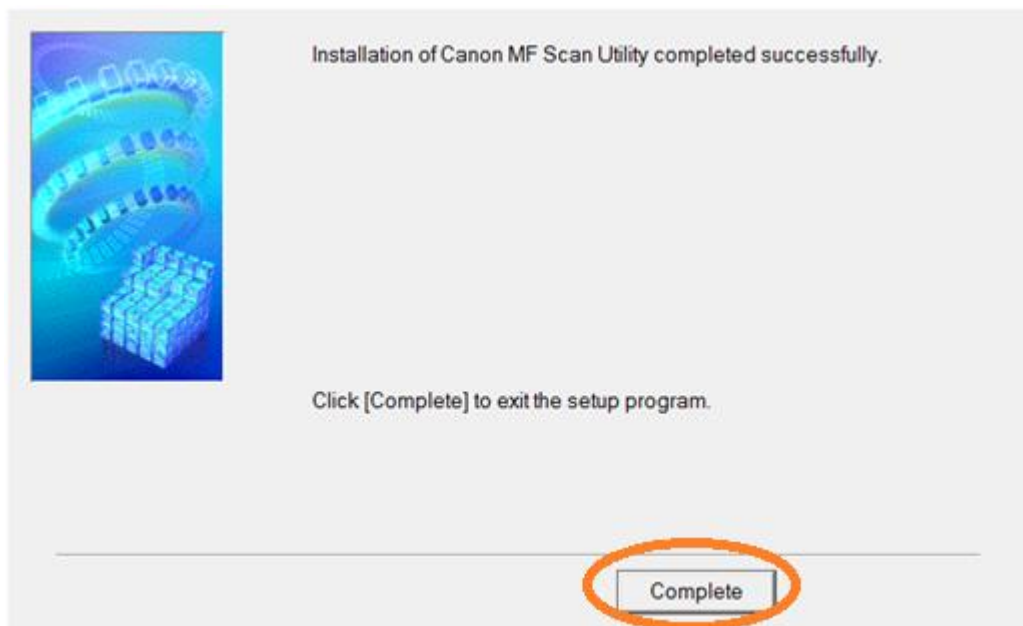
Click "Next >"



21. 按「Yes」
Click “Yes”



22. 按「Complete」
Click “Complete”



-完-
-End-