

透過 USB 連接安裝 MF266dn 印表機的驅動程式步驟 (以 Win 10 作示範)  
MF266dn printer driver Installation Guide for Windows via USB connection (Win 10 as example)

**\*\*注意: 安裝驅動程式前請勿接駁 USB 線，以免系統發生錯誤\*\***

**\*\* Please don't plug the USB cable until the driver asked to do so\*\***

1. 到佳能網站<https://hk.canon/en/support/imageCLASS%20MF266dn/model>，下載印表機的驅動程式  
Go to: <https://hk.canon/en/support/imageCLASS%20MF266dn/model>, download the printer driver
2. 選擇並下載以下檔案  
Choose and download below files:
  - 打印機驅動程式 / Printer Driver  
[\[Windows xxbit\] MF269dw/MF267dw/MF266dn/MF264dw/MF261d MFDivers \(UFRII LT / Generic Plus PCL6 / Generic FAX / ScanGear\)](#)
  - 掃描器軟件 / Scanning software  
[\[Windows 32bit & 64bit\] MF Scan Utility Ver.x.x.x.x](#)

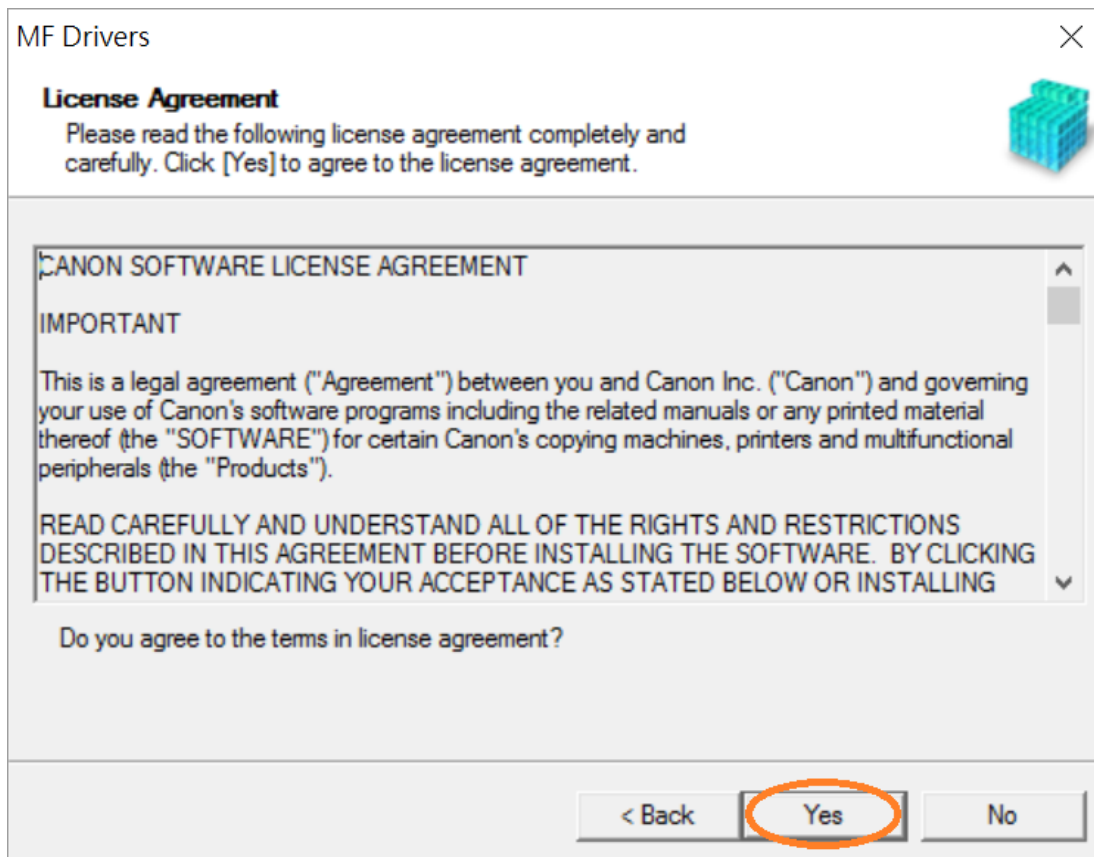
下載完成後，打開驅動程式 安裝檔案

Open driver installation file after downloaded

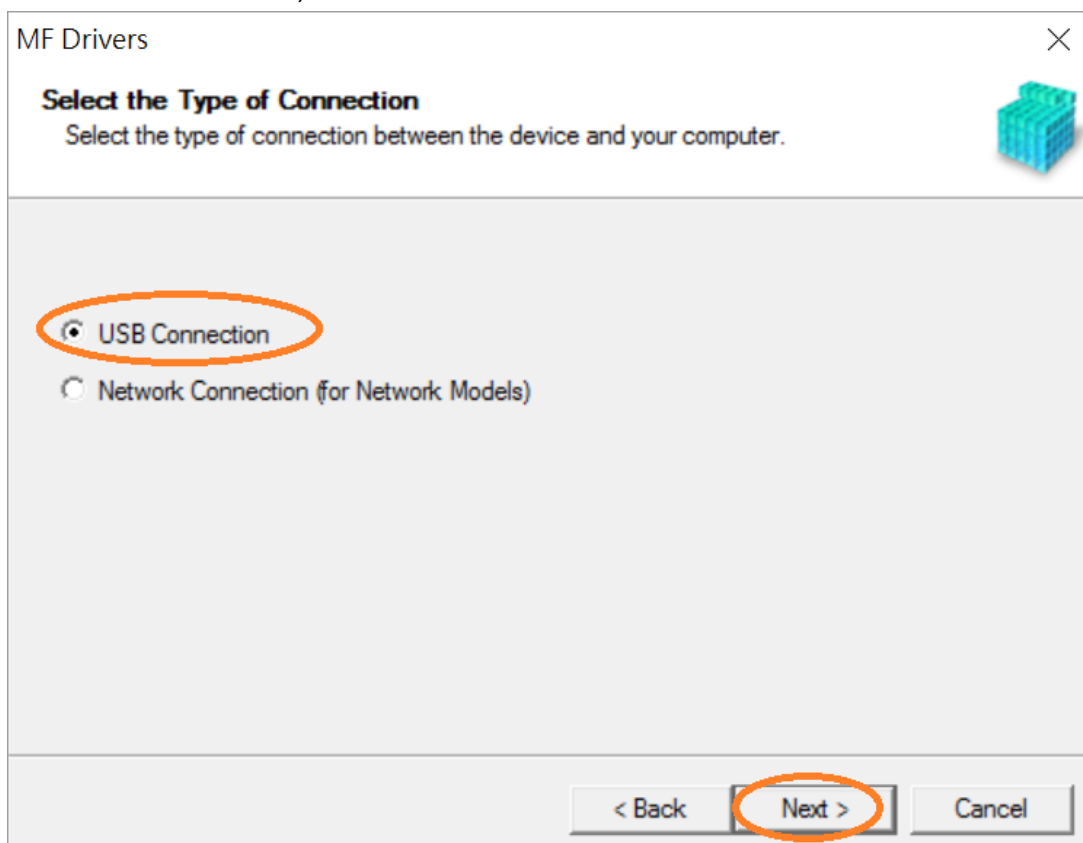
3. 按「Next >」  
Click "Next >"



4. 按「Yes」  
Click “Yes”

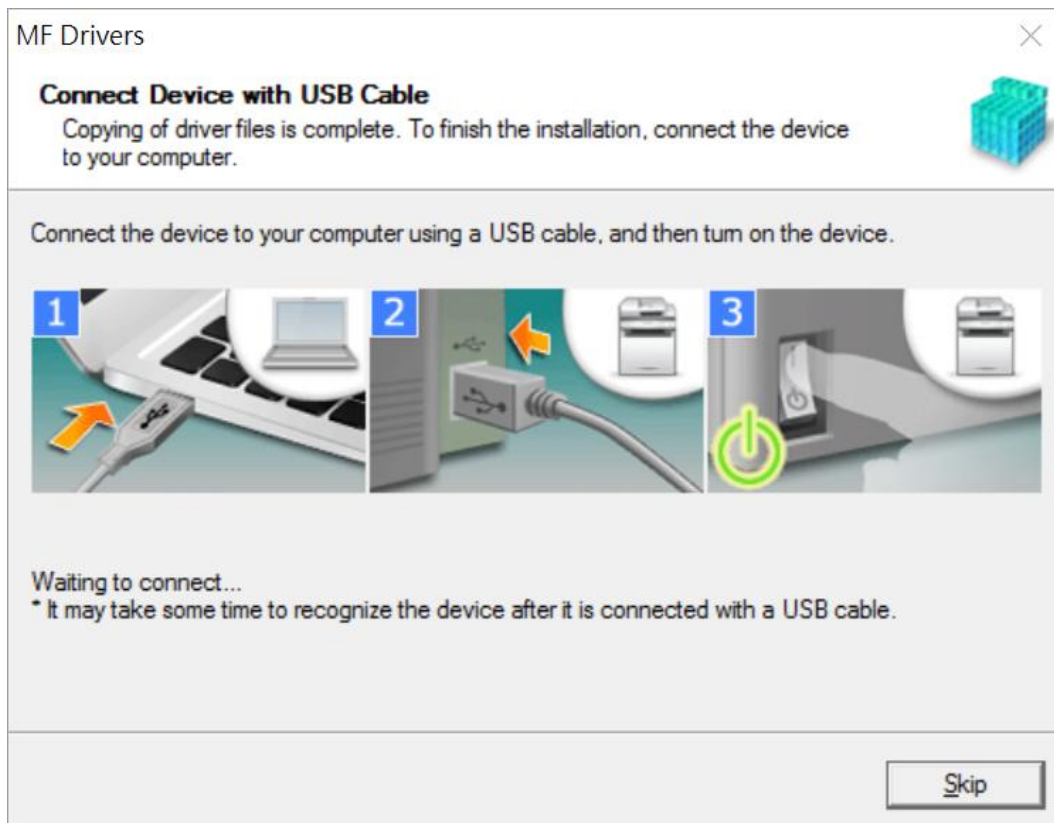


5. 選擇「USB Connection」，按「Next >」  
Select “USB Connection”, click “Next >”



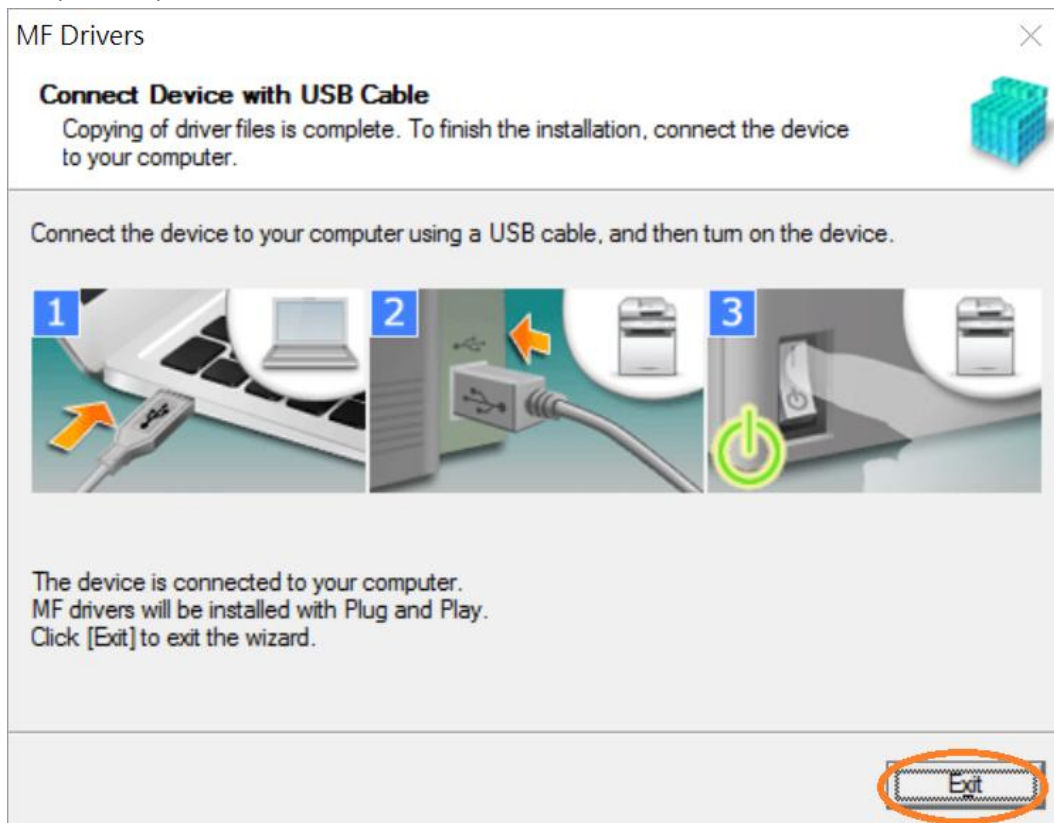
6. 以 USB 線接駁打印機及電腦，然後開啟打印機

Connect printer and computer with the USB cable, and then turn on the printer



7. 安裝完成，按「Exit」

Setup is completed, click "Exit"



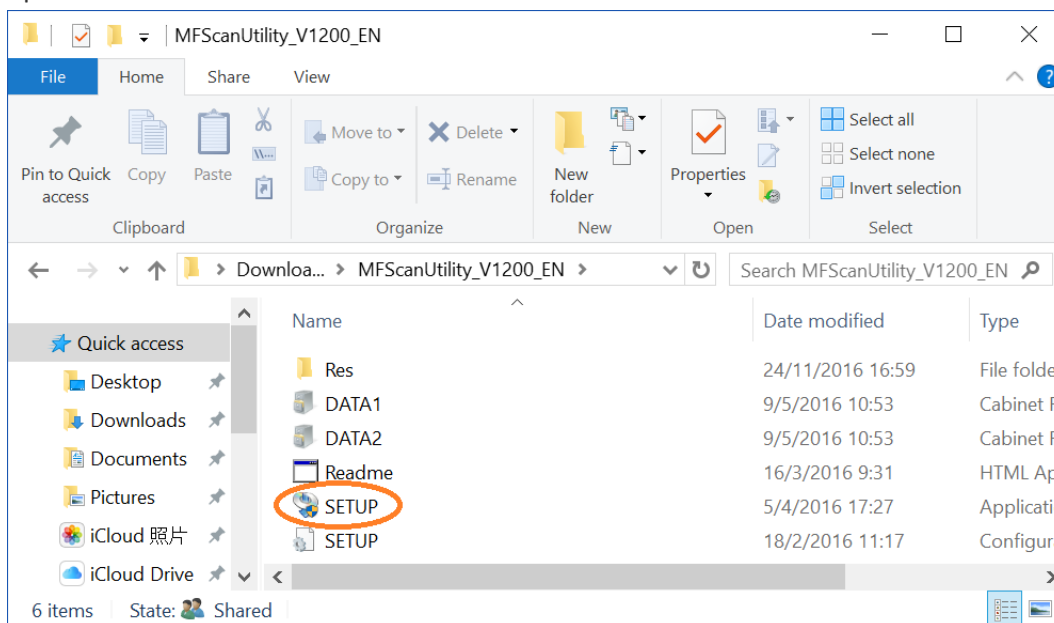
## 安裝掃描軟件MF Scan Utility MF Scan Utility installation procedure

8. 打開「winmfscanutilityv\*\*\*\*\*.exe」檔案。將在同一文件夾中創建新文件夾，如打開文件解壓縮時出現「使用者帳戶控制」選項，按「是」，打開「winmfscanutilityv\*\*\*\*\*」文件夾

Open “winmfscanutilityv\*\*\*\*\*.exe” file, a new folder will be created. If “User Account Control” window pops up, click “Yes”, open “winmfscanutilityv\*\*\*\*\*” file folder

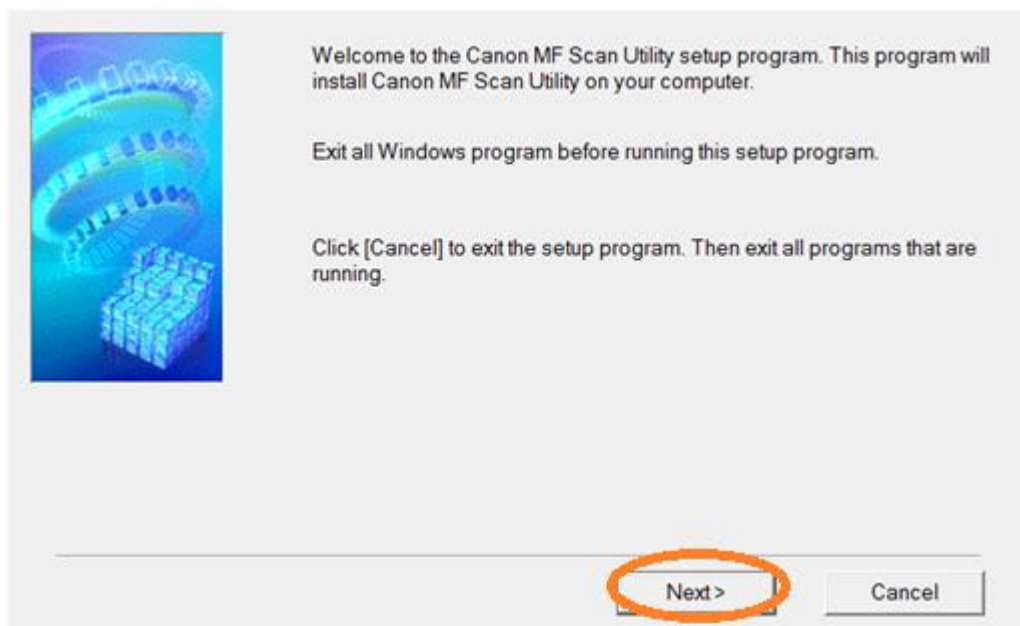
9. 開啓「SETUP.exe」檔案

Open “SETUP.exe” file

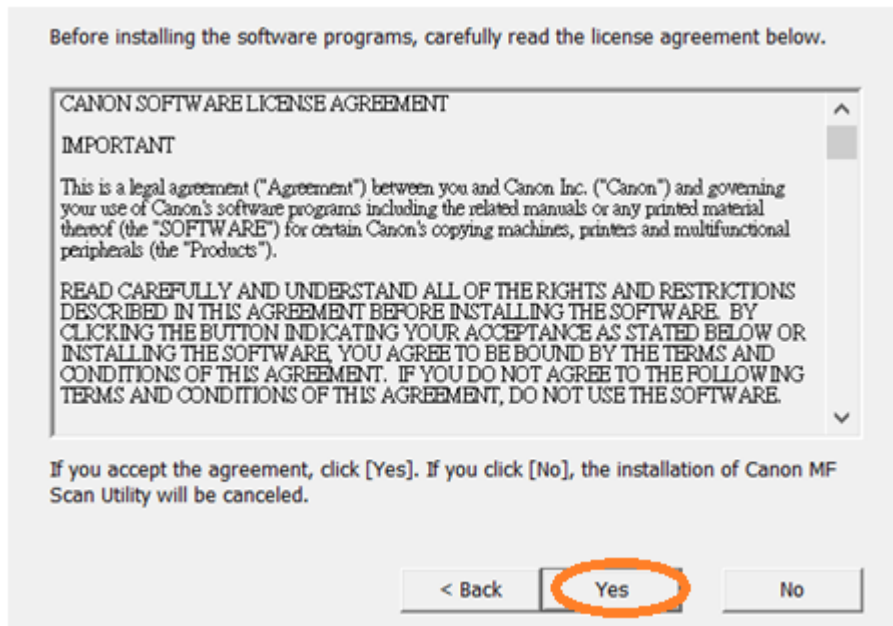


14. 按「Next >」

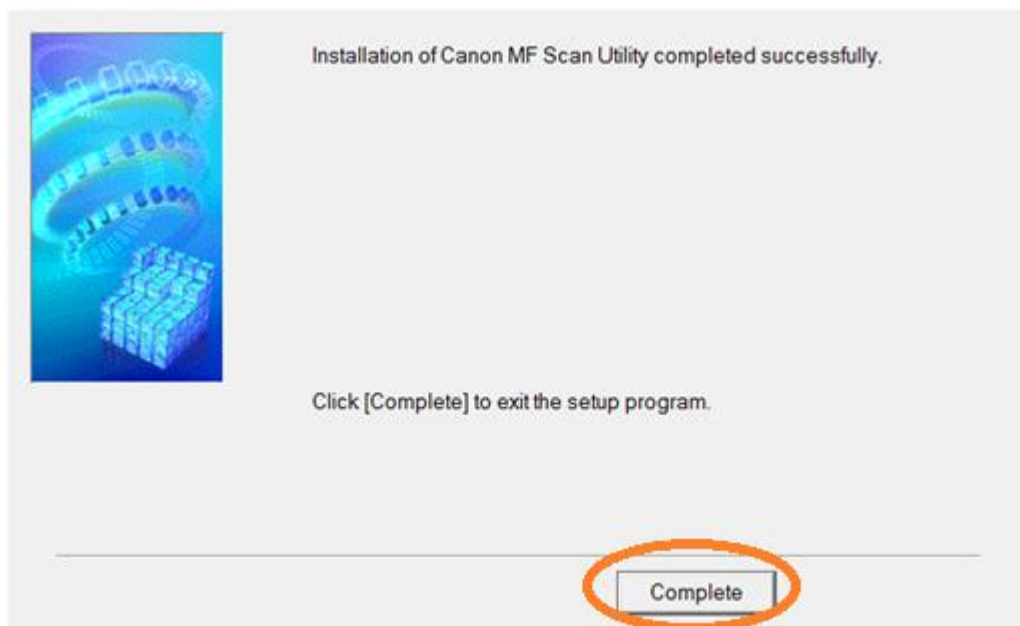
Click “Next >”



15. 按「Yes」  
Click “Yes”



16. 按「Complete」  
Click “Complete”



-完-  
-End-