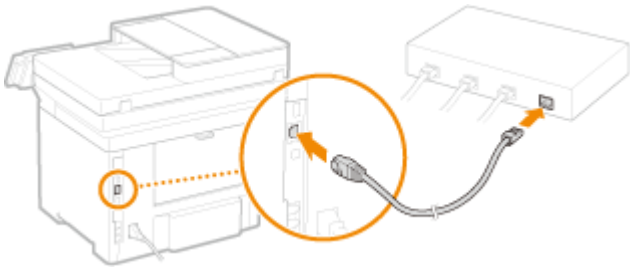


透過乙太網路連接安裝 MF266dn 印表機的驅動程式步驟 (以 Win 10 作示範)
MF266dn printer driver Installation Guide for Windows via LAN connection (Win 10 as example)

****使用乙太網路連接線接駁到印表機及開啟印表機****

****Connect the machine to a router by using a LAN cable and turn on computer****



下載及安裝步驟

Driver download and Installation procedure

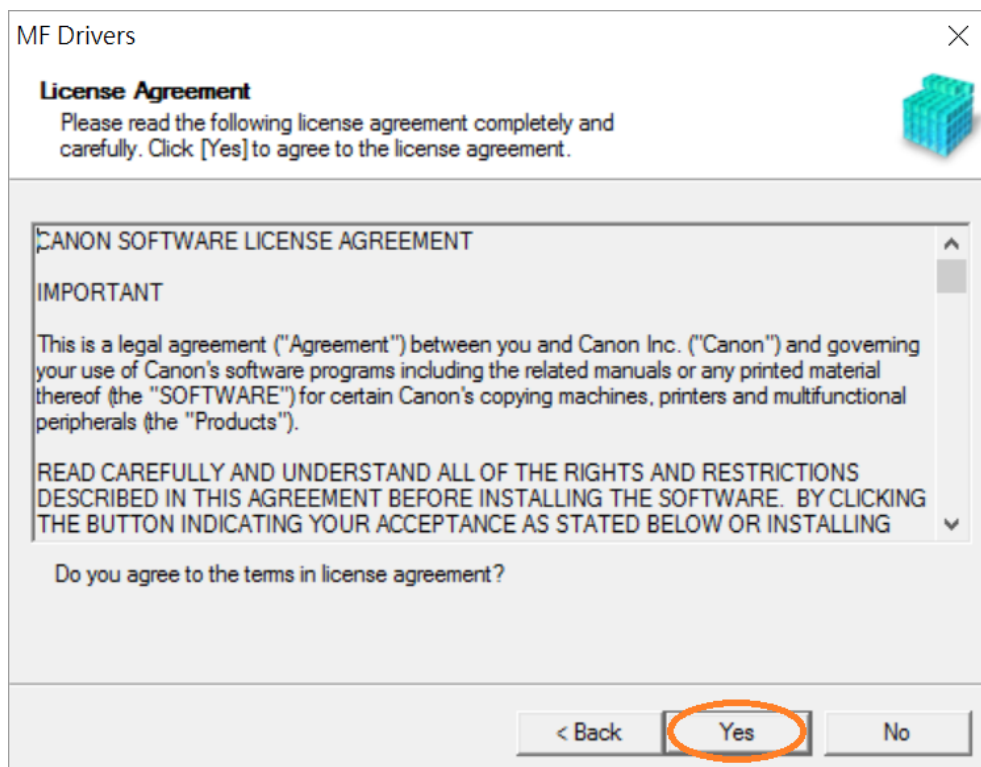
1. 到佳能網站<https://hk.canon/en/support/imageCLASS%20MF266dn/model>，下載印表機的驅動程式
Go to: <https://hk.canon/en/support/imageCLASS%20MF266dn/model>, download the printer driver
2. 選擇並下載以下檔案
Choose and download below files:
 - 打印機驅動程式 / Printer Driver
[\[Windows xxbit\] MF269dw/MF267dw/MF266dn/MF264dw/MF261d MFDivers \(UFRII LT / Generic Plus PCL6 / Generic FAX / ScanGear\)](#)
 - 掃描器軟件 / Scanning software
[\[Windows 32bit & 64bit\] MF Scan Utility Ver.x.x.x.x](#)

下載完成後，打開驅動程式 安裝檔案
Open driver installation file after downloaded

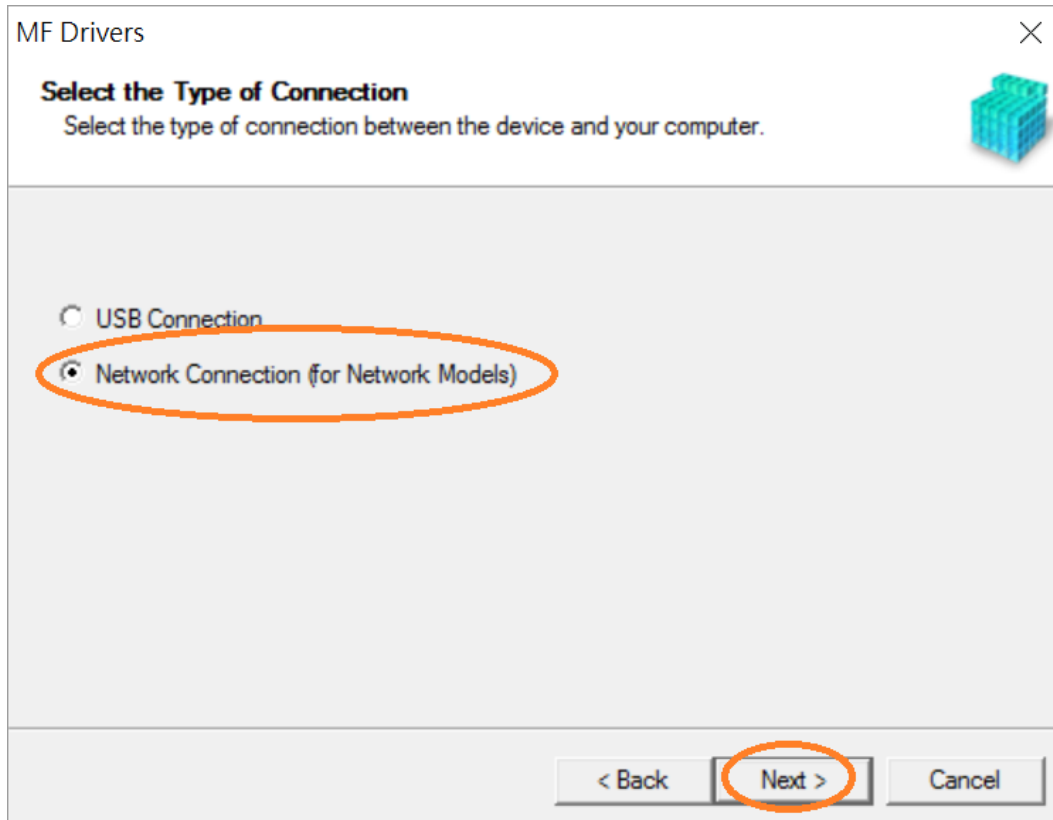
- 按「Next >」
Click "Next >"



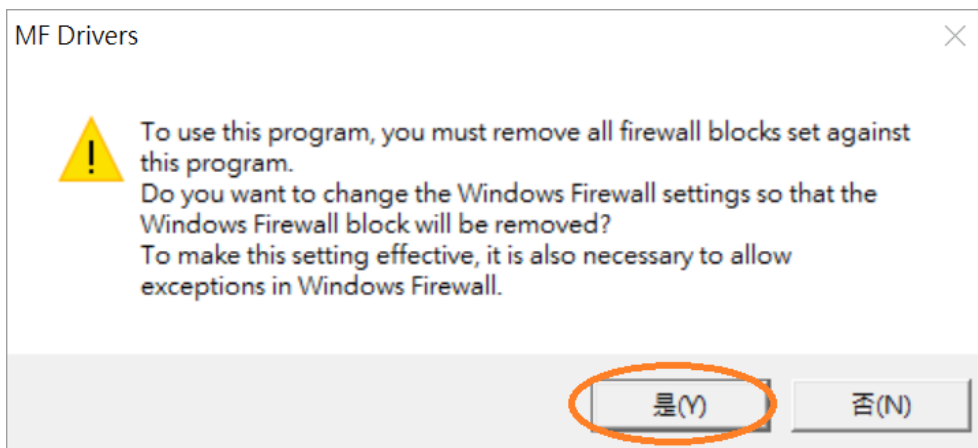
- 按「Yes」
Click "Yes"



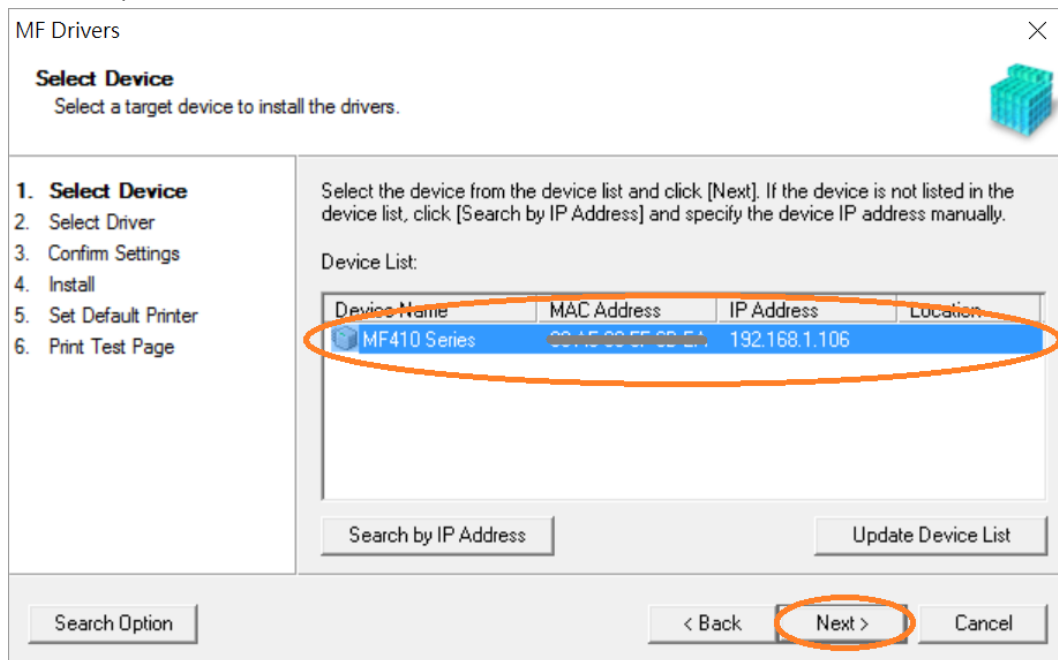
5. 選擇「Network Connection (for Network Models)」，按「Next >」
Select “Network Connection (for Network Models)” , click “Next >”



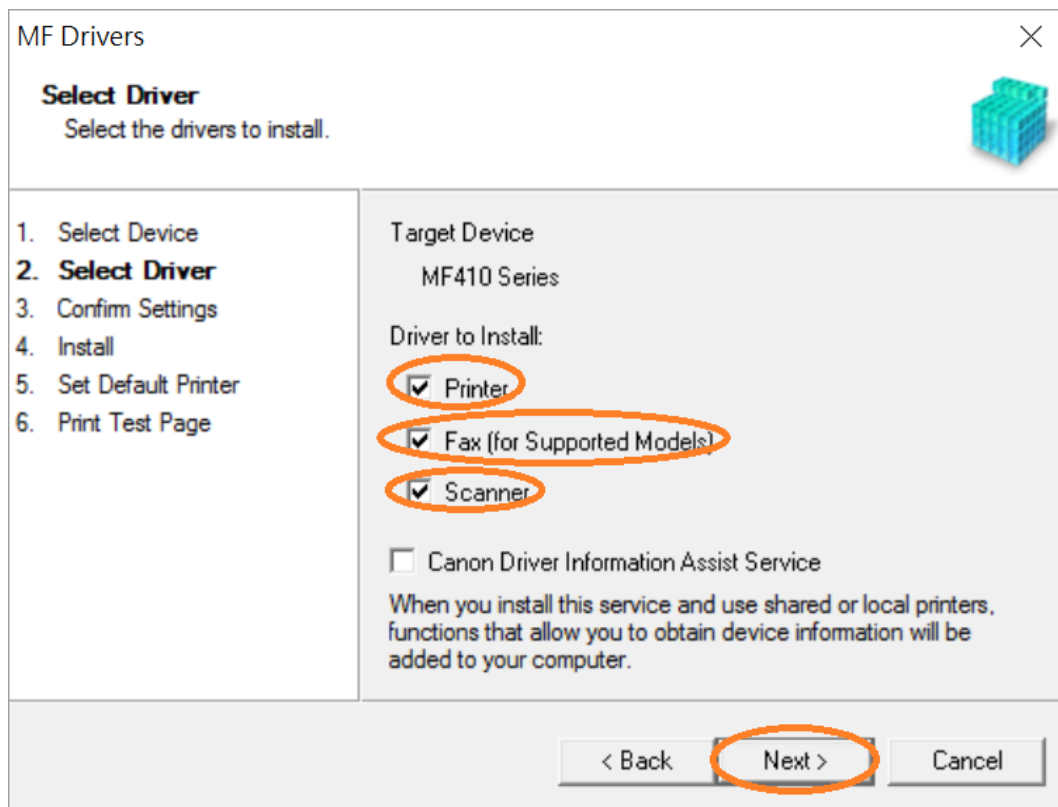
6. 按「是」
Click “Yes”



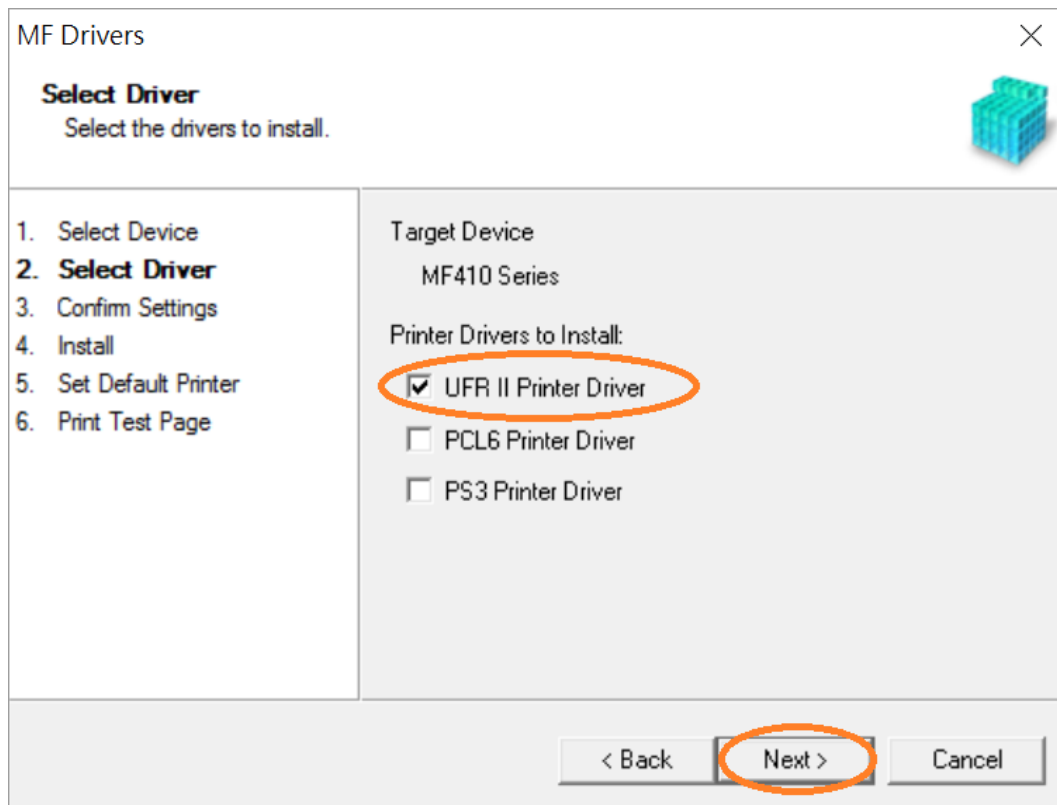
7. 選擇「MF260 Series」（以 MF410 Series 為例子），按「Next >」（如清單沒有印表機，請選「Search by IP Address」方法連接或聯絡客戶服務熱線 31912333 尋求支援）
Select “MF260 Series” (MF410 Series as example), click “Next >”(If there is no printer on the list, please select “Search by IP Address” method to connect or contact customer service hotline 31912333 to seek for support)



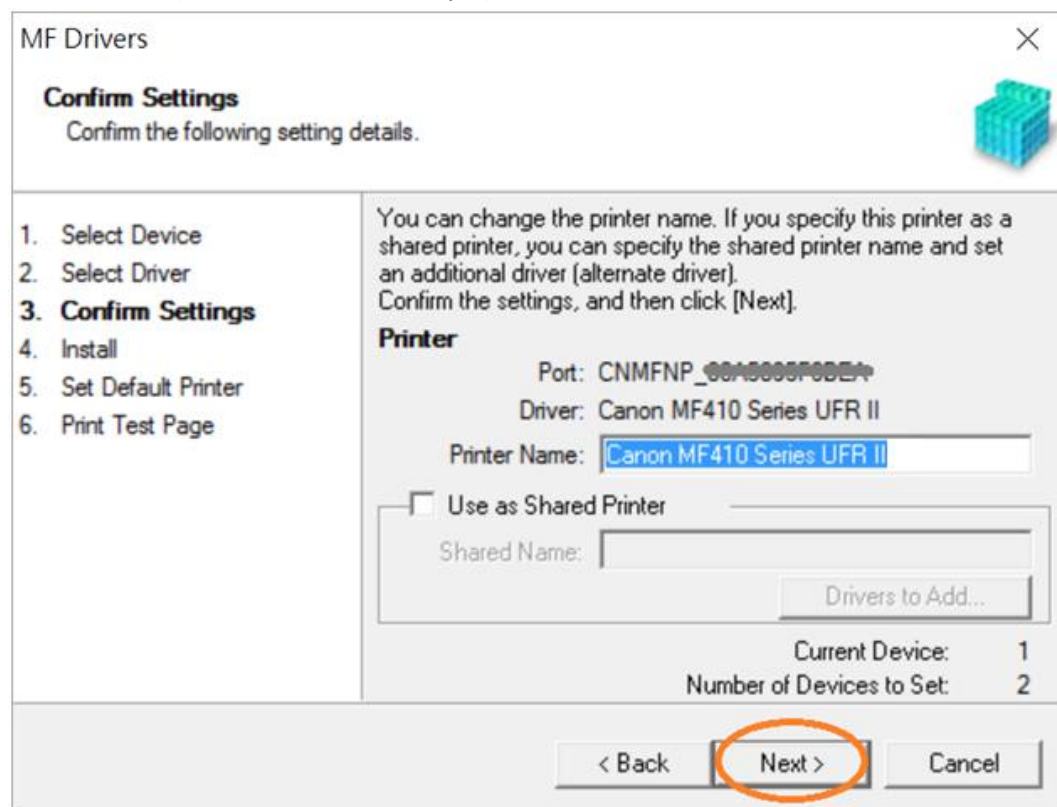
8. 確認已剔選「Printer」、「Fax (for Supported Models)」、「Scanner」（以 MF410 Series 為例子），按「Next >」
Confirm the “Printer” “Fax for Supported Models” “Scanner” box is checked(MF410 Series as example), click “Next >”



9. 選擇「UFR II Printer Driver」（以 MF410 Series 為例子），按「Next >」
Select “UFR II Printer Driver” (MF410 Series as example), click “Next >”

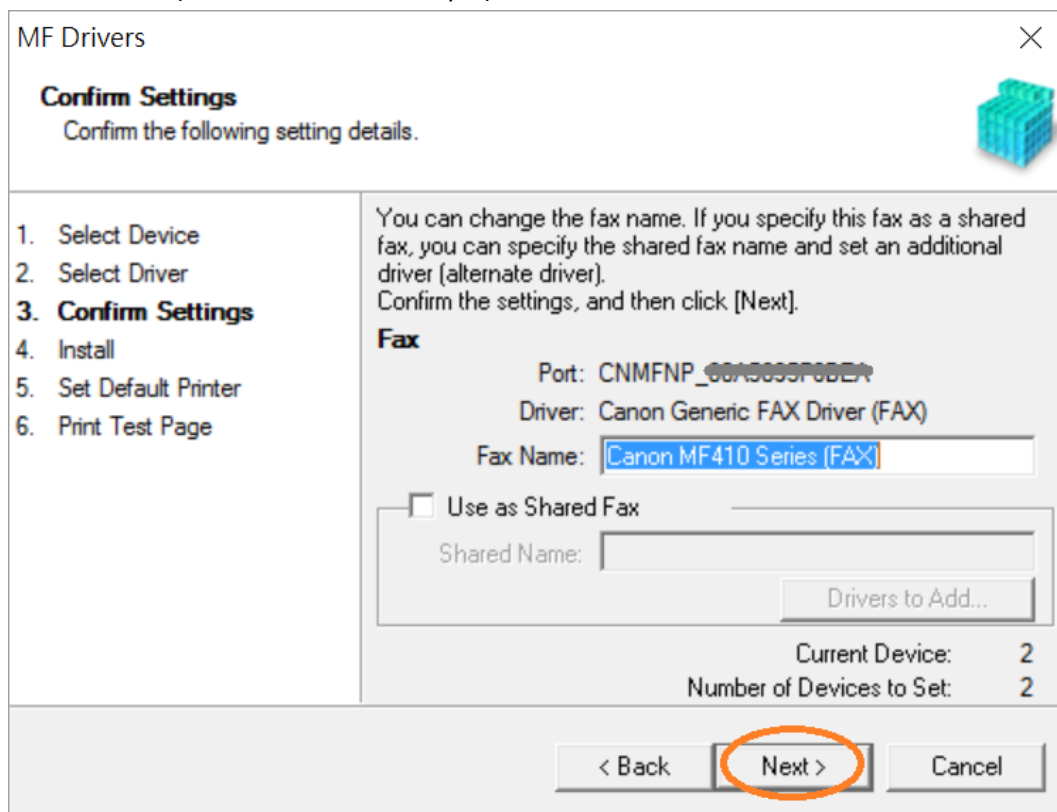


10. 按「Next >」（以 MF410 Series 為例子）
Click “Next >” (MF410 Series as example)



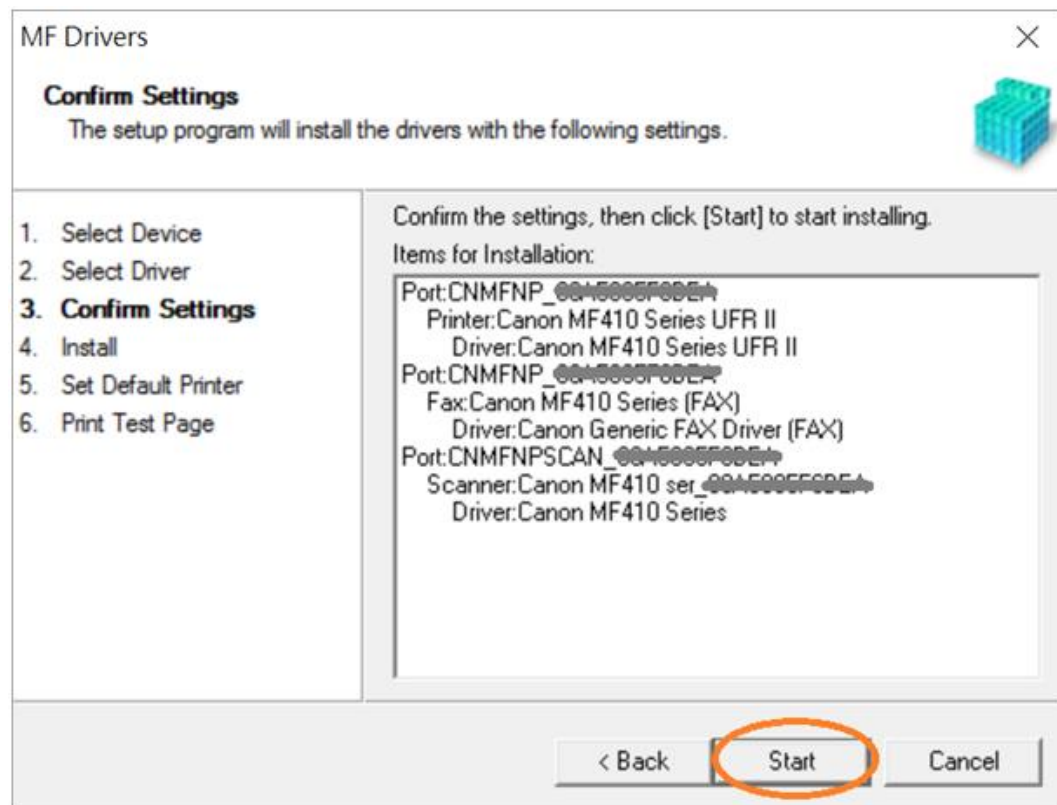
11. 按「Next >」(以 MF410 Series 為例子)

Click "Next >" (MF410 Series as example)



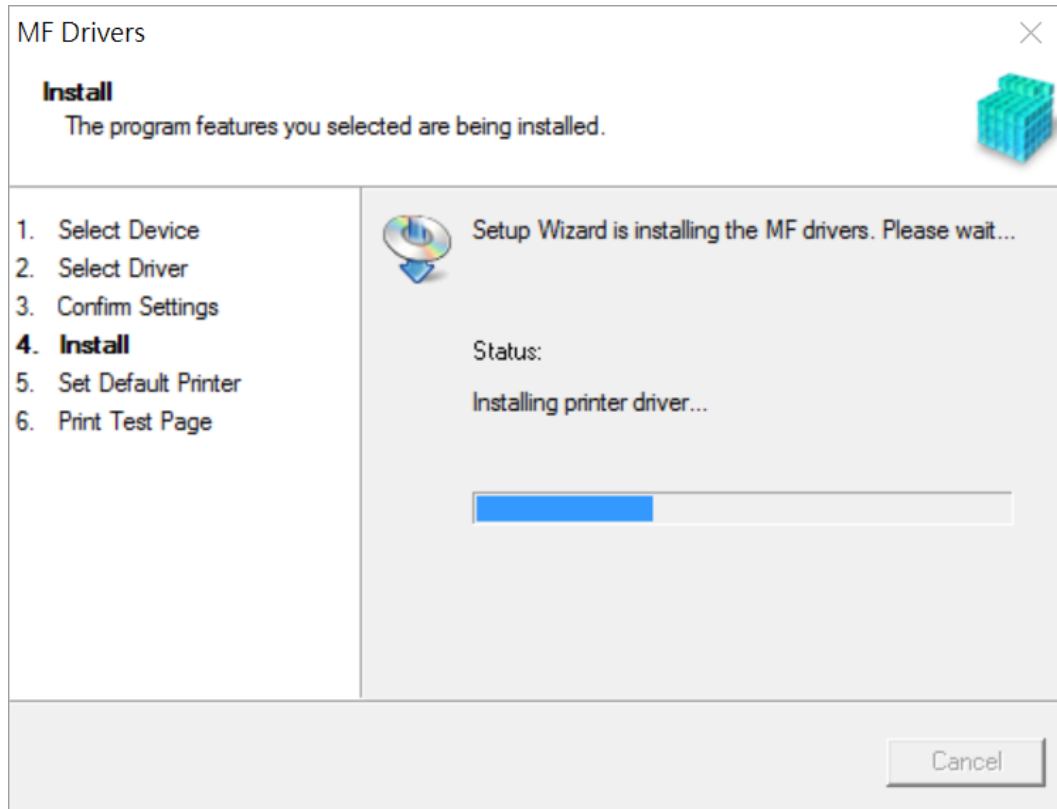
12. 按「Start」(以 MF410 Series 為例子)

Click "Start>" (MF410 Series as example)

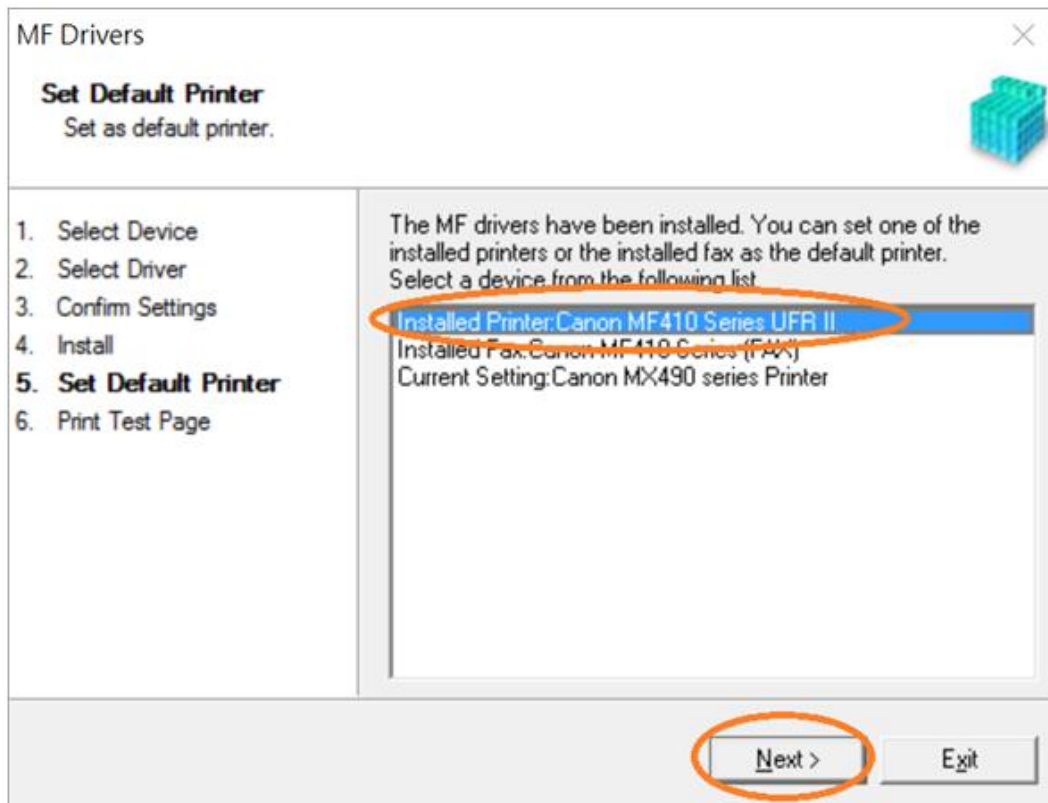


13. 請等待安裝精靈成完安裝

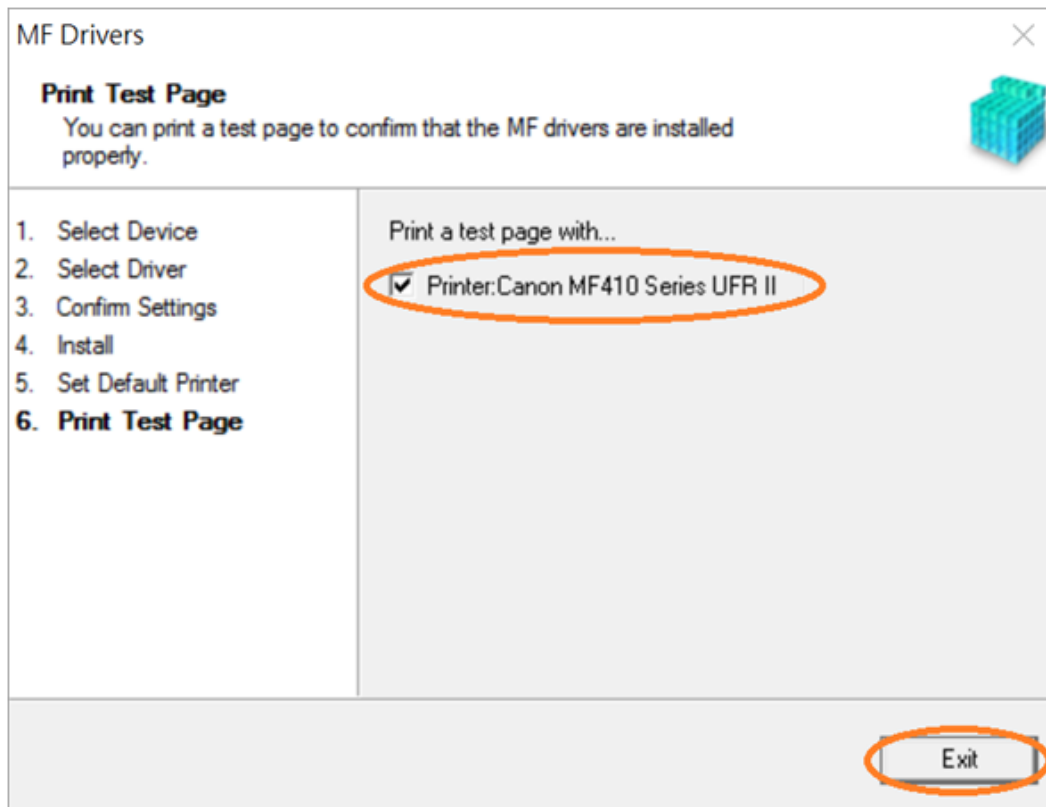
Please wait for the setup wizard to accomplish installation



14. 選擇「Installed Printer: Canon MF260 Series UFR II」（以 MF410 Series 為例子），按「Next >」
Select "Installed Printer: Canon MF260 Series UFR II" (MF410 Series as example), click "Next >"



15. 可剔選「Printer: Canon MF260 Series UFR II」以（MF410 Series 為例子）進行列印測試頁，按「Exit」
Can check the box at “Printer: Canon MF260 Series UFR II” (MF410 Series as example) to print a test page, click “Exit”



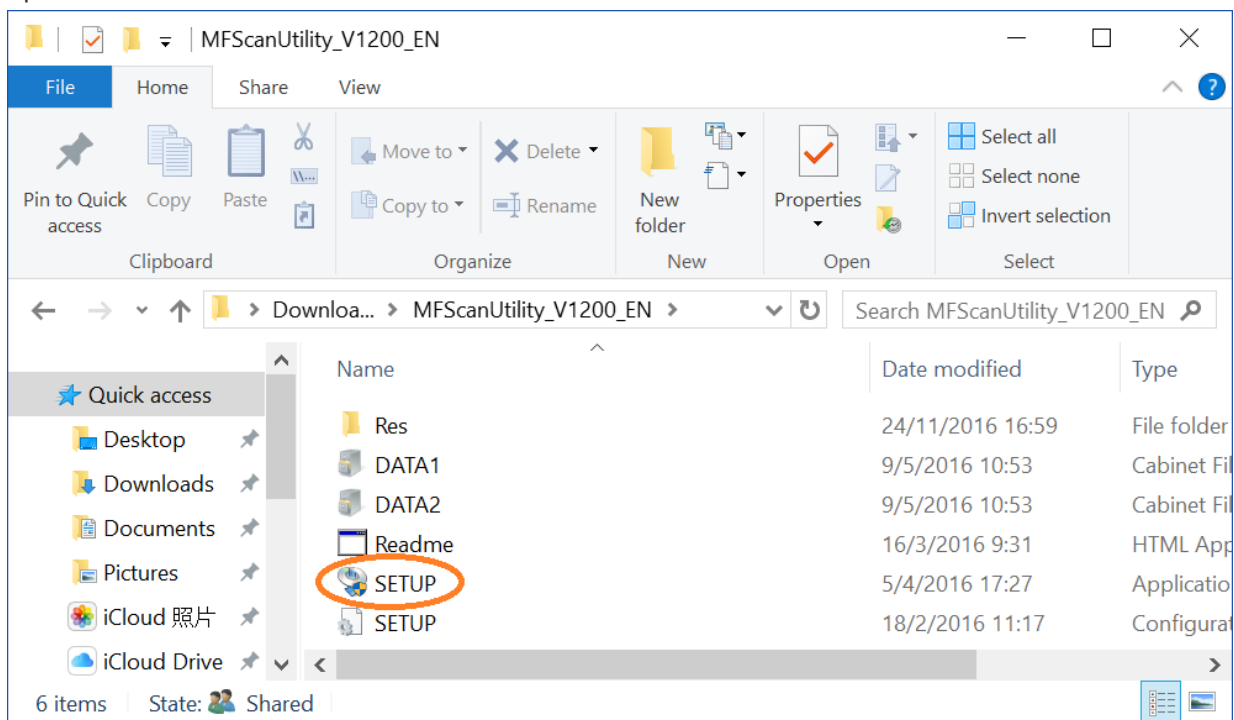
安裝掃描軟件MF Scan Utility MF Scan Utility installation procedure

16. 打開「winmfscanutilityv*****.exe」檔案。將在同一文件夾中創建新文件夾，如打開文件解壓縮時出現「使用者帳戶控制」選項，按「是」，打開「winmfscanutilityv*****」文件夾

Open “winmfscanutilityv*****.exe” file, a new folder will be created. If “User Account Control” window pops up, click “Yes”, open “winmfscanutilityv*****” file folder

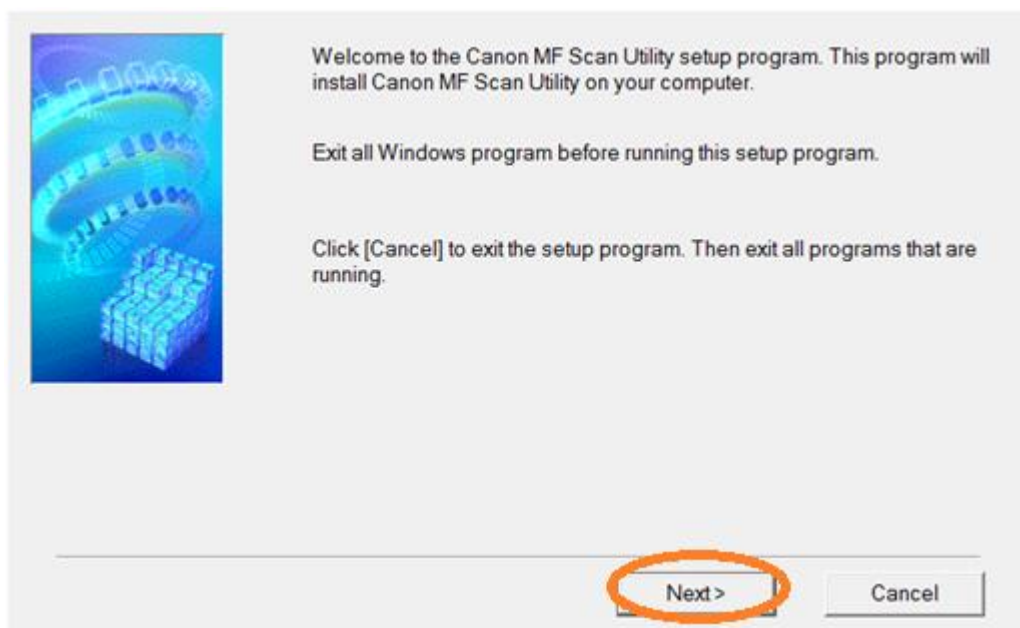
17. 開啓「SETUP.exe」檔案

Open “SETUP.exe” file

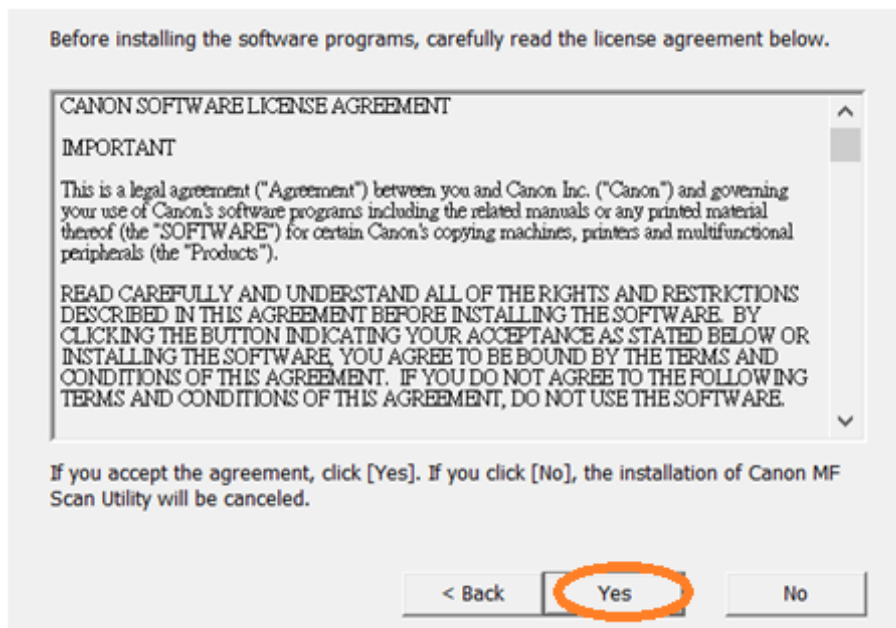


18. 按「Next >」

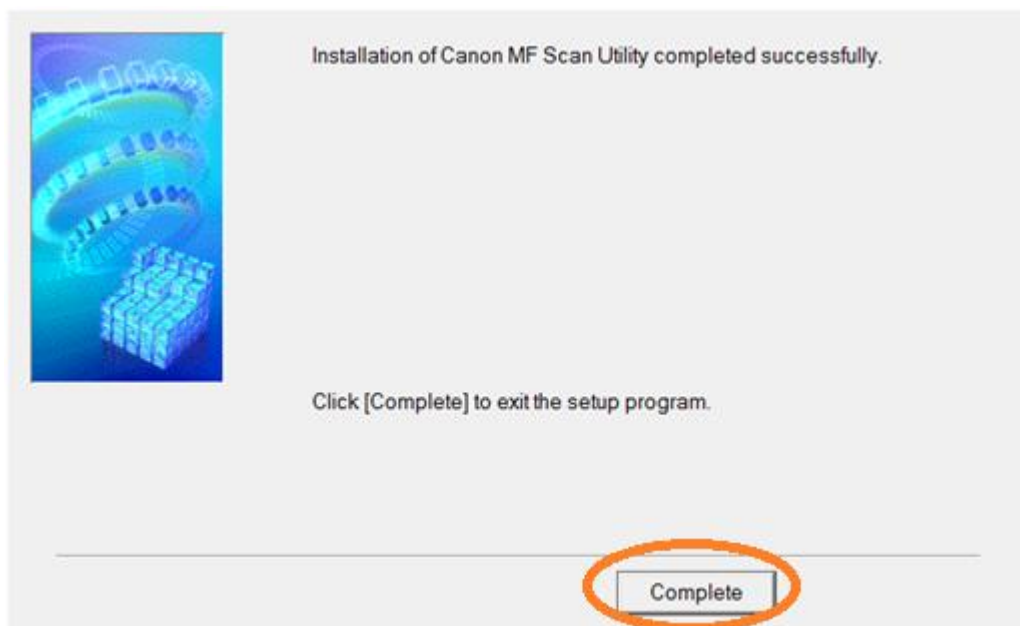
Click “Next >”



19. 按「Yes」
Click “Yes”



20. 按「Complete」
Click “Complete”



-完-
-End-