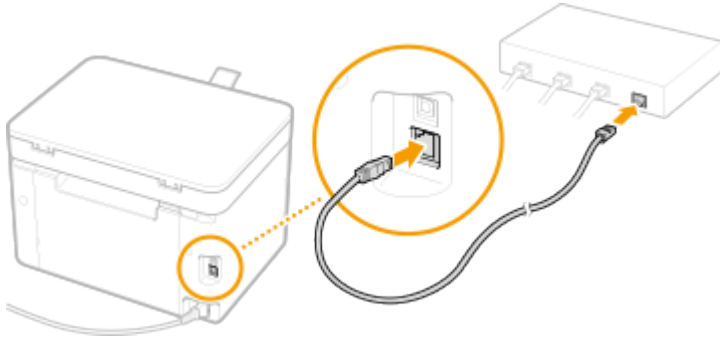


透過乙太網路連接安裝 MF913x 印表機的驅動程式步驟 (以 Win 10 作示範)
MF913x printer driver Installation Guide for Windows via LAN connection (Win 10 as example)

****使用乙太網路連接線接駁到印表機及開啟印表機****

****Connect the machine to a router by using a LAN cable and turn on printer****



先將打印機連接到網路，詳細可參考以下步驟

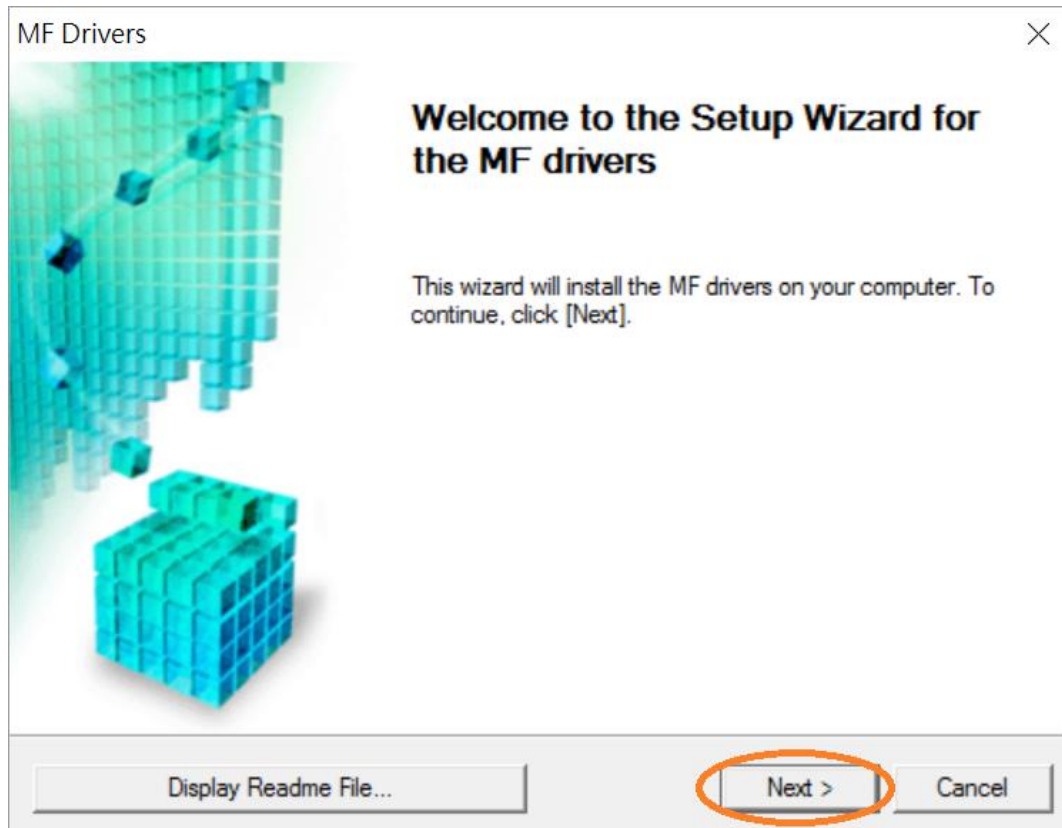
Connect printer to network first, please refer to following procedure

1. 開啟印表機
Turn on the printer
2. 在主畫面中點選「功能表」
Tap “Menu” in the Home Screen
3. 點選「網路設定」
Tap “Network Settings”
4. 點選「有線 / 無線區域網路」
Tap “Select Wired / Wireless LAN”
5. 點選 <有線區域網路>
Tap “Wired LAN”

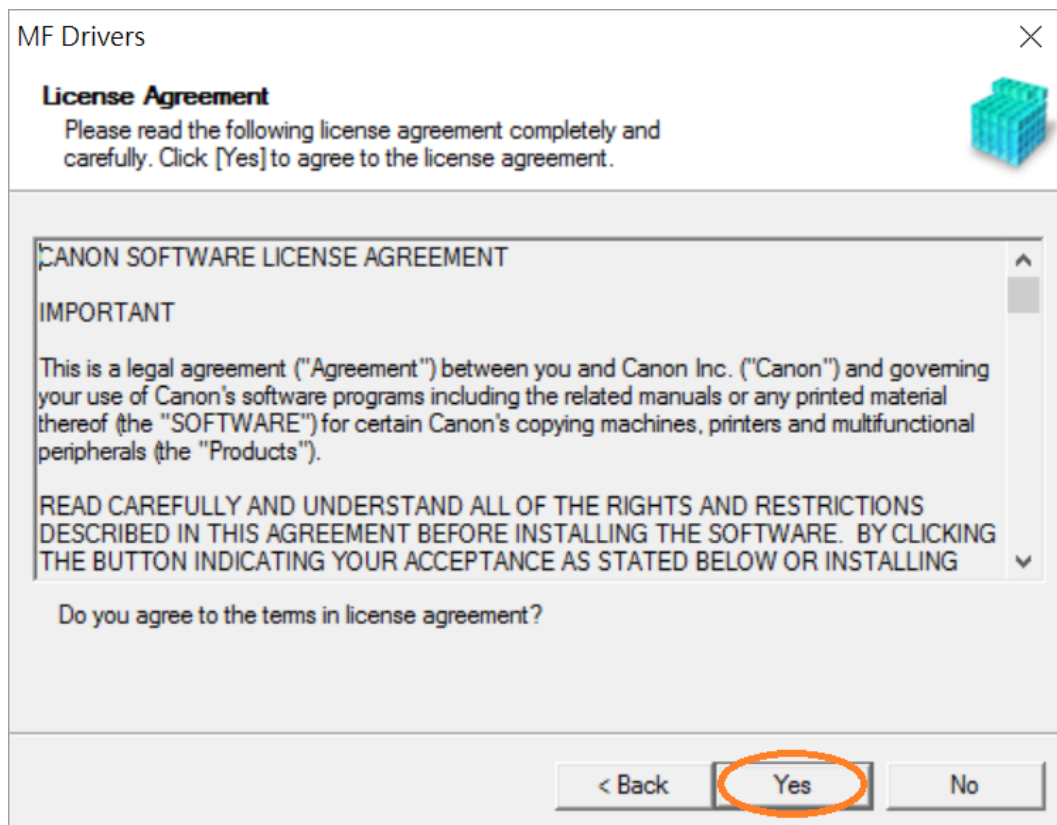
下載及安裝步驟

Driver download and installation procedure

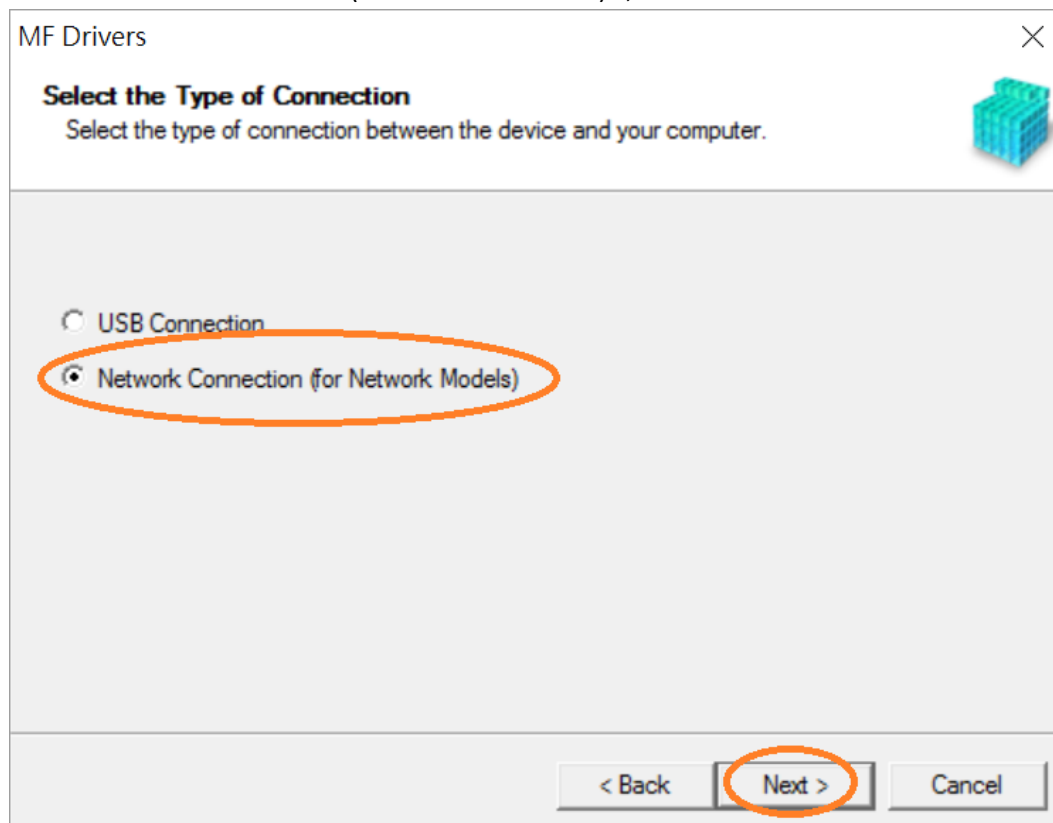
- 到佳能網站<https://hk.canon/en/support/imageCLASS%20MF913w/model>，下載印表機的驅動程式
Go to: <https://hk.canon/en/support/imageCLASS%20MF913w/model>, download the printer driver
- 選擇並下載以下檔案
Choose and download below files:
 - 打印機驅動程式 / Printer Driver
[\[Windows xxbit\] MF113w/MF112/MF913w/MF912 MFDivers \(UFR II / ScanGear\)](#)
 - 掃描器軟件 / Scanning software
[\[Windows 32bit & 64bit\] MF Scan Utility Ver.x.x.x.x](#)
- 下載完成後，打開驅動程式 安裝檔案
Open driver installation file after downloaded
- 按「Next >」
Click "Next >"



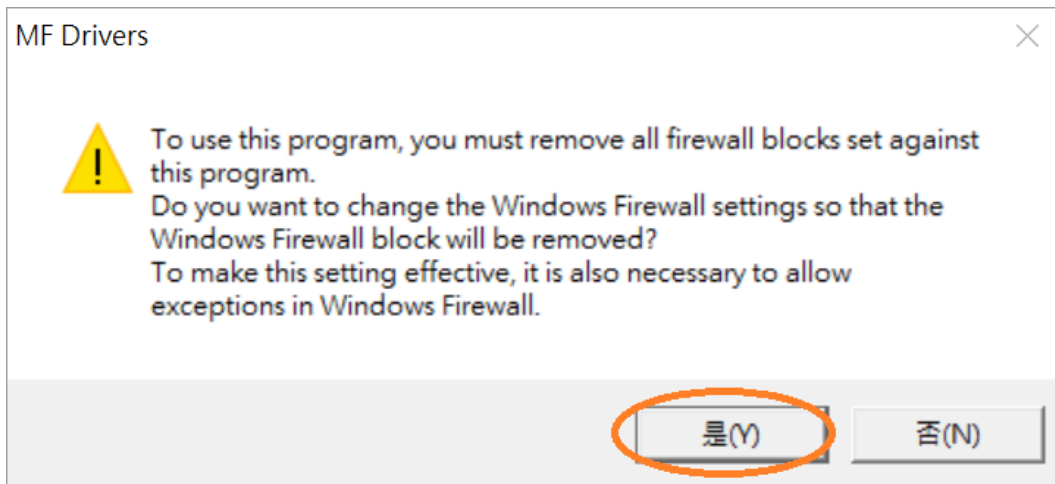
10. 按「Yes」
Click “Yes”



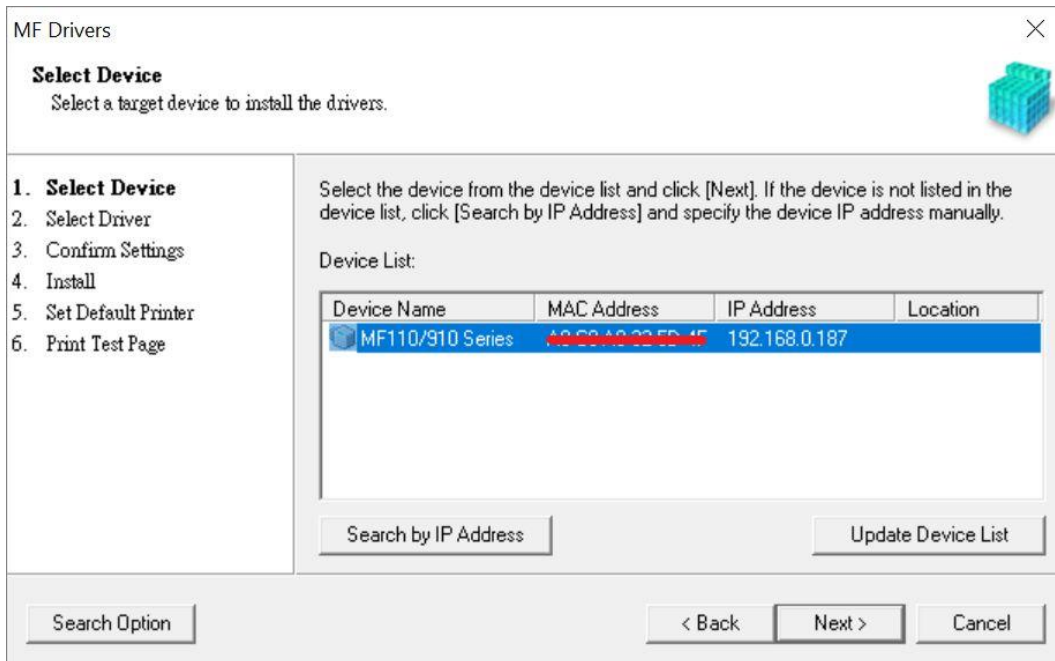
11. 選擇「Network Connection (for Network Models)」，按「Next >」
Select “Network Connection (for Network Models)” , click “Next >”



12. 按「是」
Click "Yes"



13. 選擇「MF110/910 Series」，按「Next >」（如清單沒有印表機，請選「Search by IP Address」方法連接或聯絡客戶服務熱線 31912333 尋求支援）
Select "MF110/910 Series", click "Next >" (If there is no printer on the list, please select "Search by IP Address" method to connect or contact customer service hotline 31912333 to seek for support)



14. 確認已剔選「Printer」「Scanner」，按「Next >」

Confirm the “Printer” “Scanner” box is checked, click “Next >”

MF Drivers

Select Driver
Select the drivers to install.

1. Select Device
2. Select Driver
3. Confirm Settings
4. Install
5. Set Default Printer
6. Print Test Page

Target Device
Canon MF110/910 Series

Driver to Install:

Printer
 Scanner

Canon Driver Information Assist Service
When you install this service and use shared or local printers, functions that allow you to obtain device information will be added to your computer.

< Back Next > Cancel

15. 按「Next >」

Click “Next >”

MF Drivers

Confirm Settings
Confirm the following setting details.

1. Select Device
2. Select Driver
3. Confirm Settings
4. Install
5. Set Default Printer
6. Print Test Page

You can change the printer name. If you specify this printer as a shared printer, you can specify the shared printer name and set an additional driver (alternate driver). Confirm the settings, and then click [Next].

Printer

Port: CNMFPN_A0C9A0325D4F
Driver: Canon MF110/910 Series UFR II LT
Printer Name: Canon MF110/910 Series UFR II LT

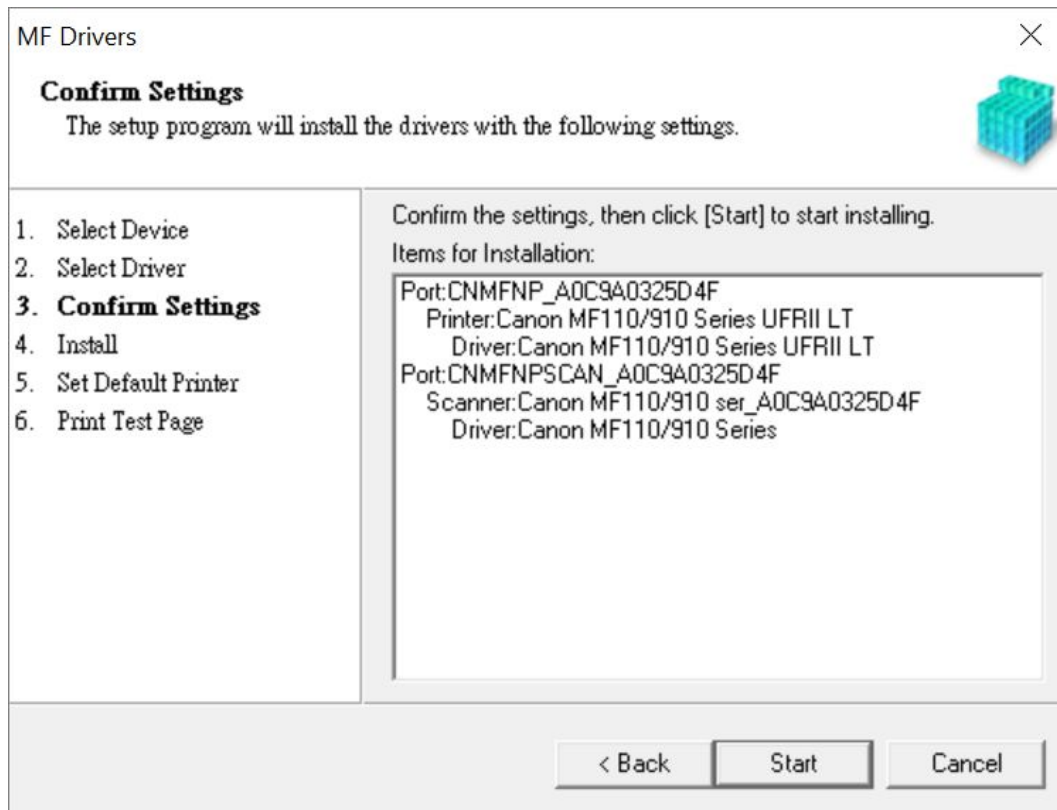
Use as Shared Printer
Shared Name:

Drivers to Add...

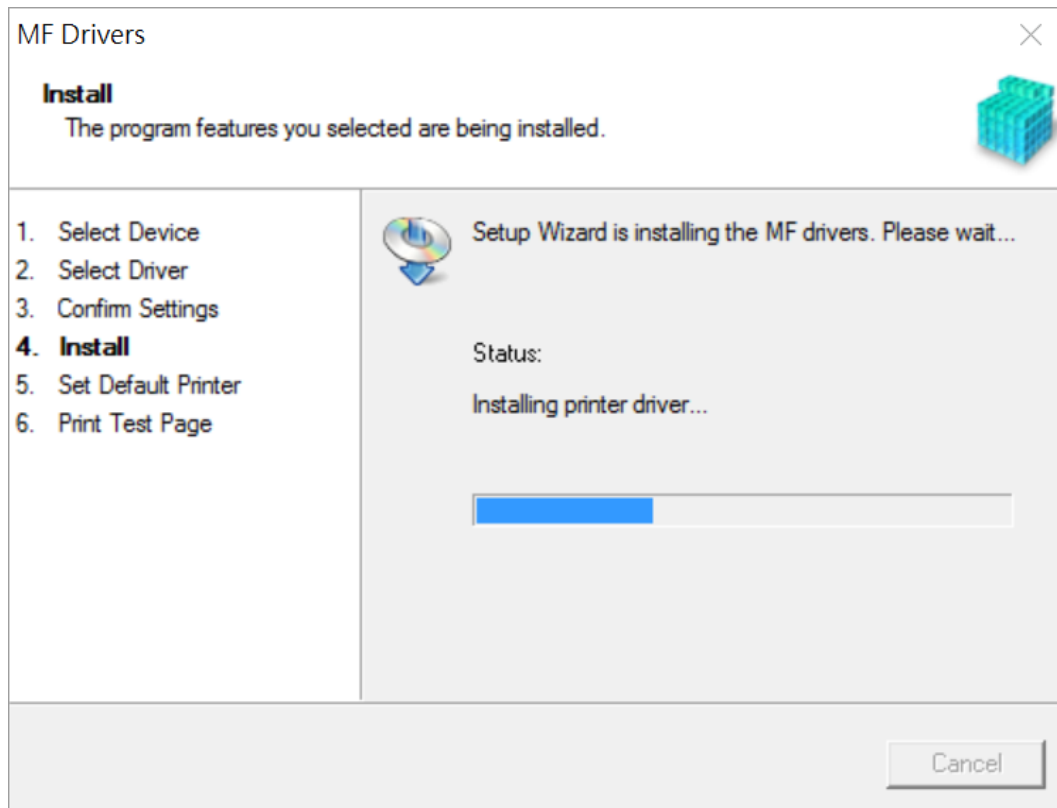
Current Device: 1
Number of Devices to Set: 1

< Back Next > Cancel

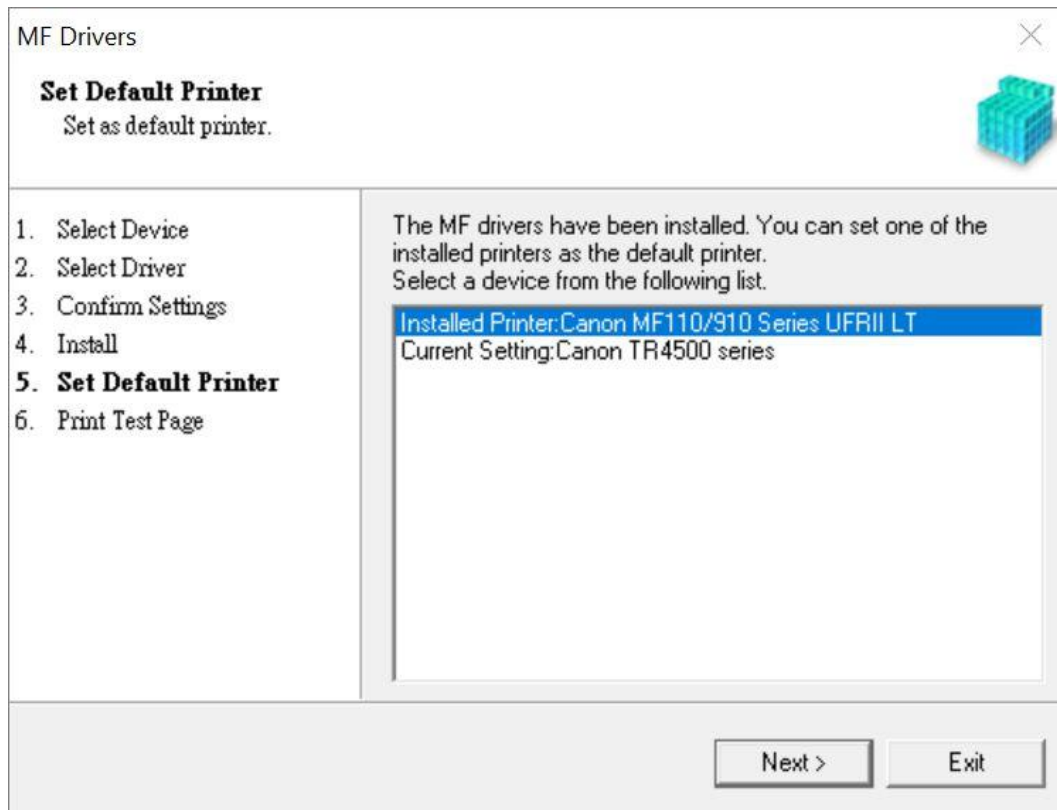
16. 按「Start」
Click "Start>"



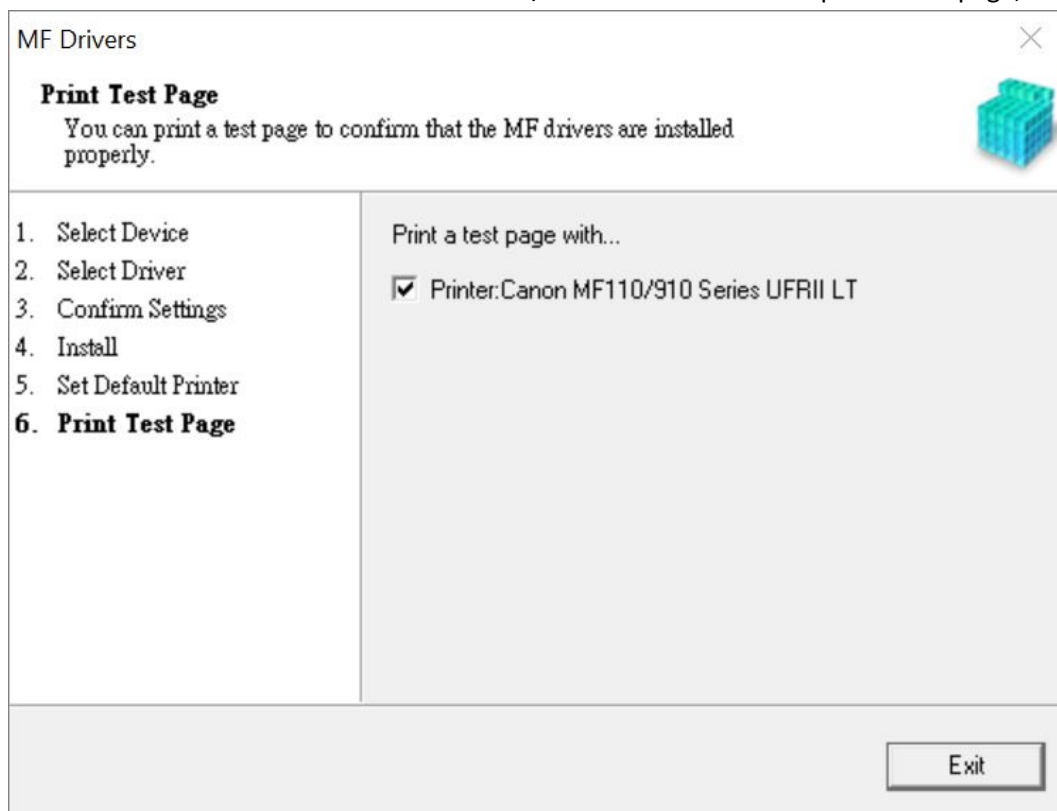
17. 請等待安裝精靈成完安裝
Please wait for the setup wizard to accomplish installation



18. 選擇「Installed Printer: Canon MF110/910 Series UFR II LT」，按「Next >」
Select “Installed Printer: Canon MF110/910 Series UFR II LT” , click “Next >”



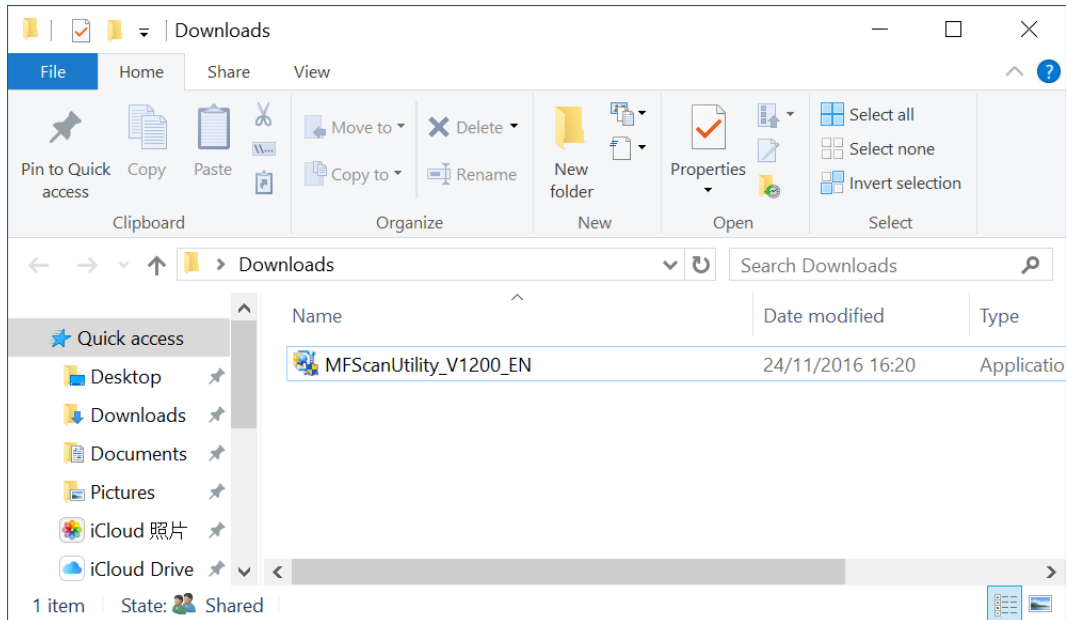
19. 可剔選「Printer: Canon MF110/910 Series UFR II LT」以進行列印測試頁，按「Exit」
Can check the box at “Printer: Canon MF110/910 Series UFR II LT” to print a test page, click “Exit”



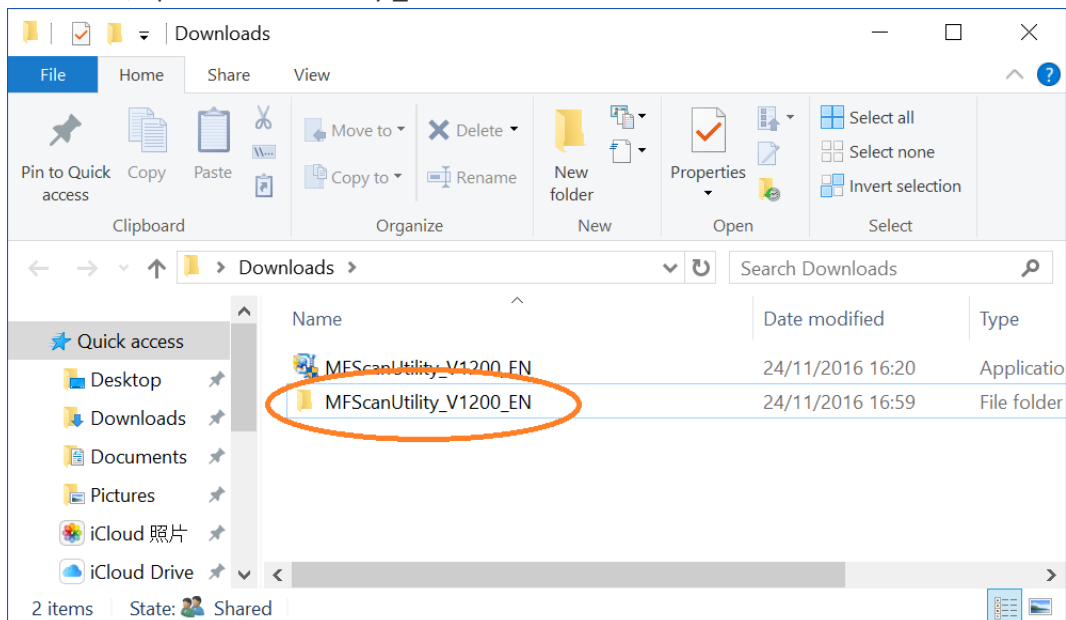
安裝掃描軟件MF Scan Utility MF Scan Utility installation procedure

20. 執行檔案 [winmfscanutilityvxxxx.exe] 按「Next」
Run the file [winmfscanutilityvxxxx.exe] , click “Next”

21. 下載的文件以自解壓縮檔檔案（.exe 格式）保存在指定的文件夾中
The self extractor file (.exe format) is saved to specified folder

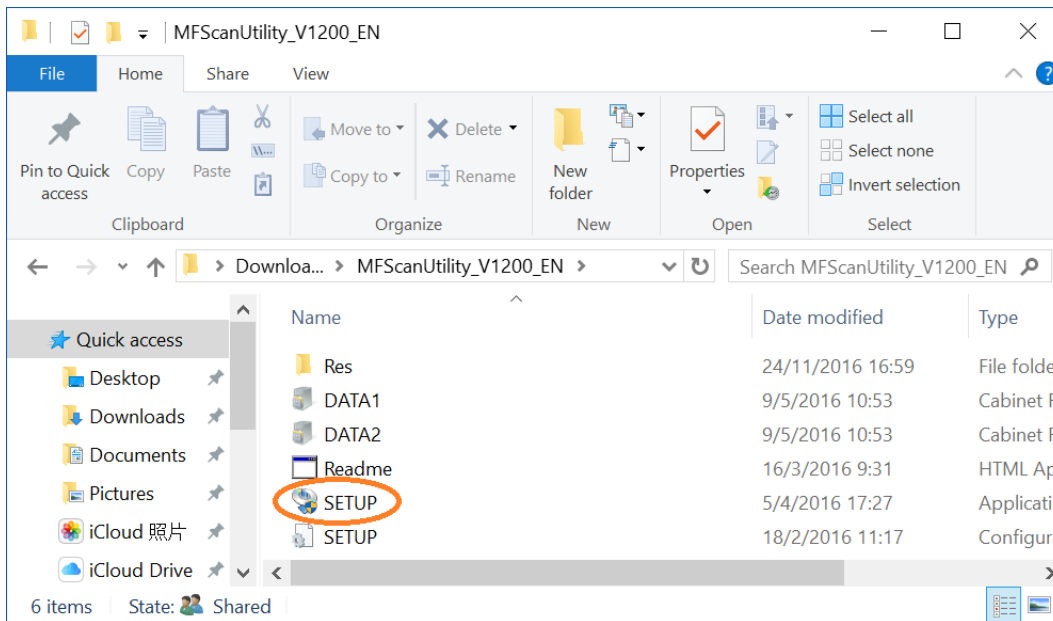


22. 打開「MFScanUtility_***.exe」檔案。將在同一文件夾中創建新文件夾，如打開文件解壓縮時出現「使用者帳戶控制」選項，按「是」，打開「MFScanUtility_***」文件夾
Open “MFScanUtility_***.exe” file, a new folder will be created. If “User Account Control” window pops up, click “Yes”, open “MFScanUtility_***” file folder



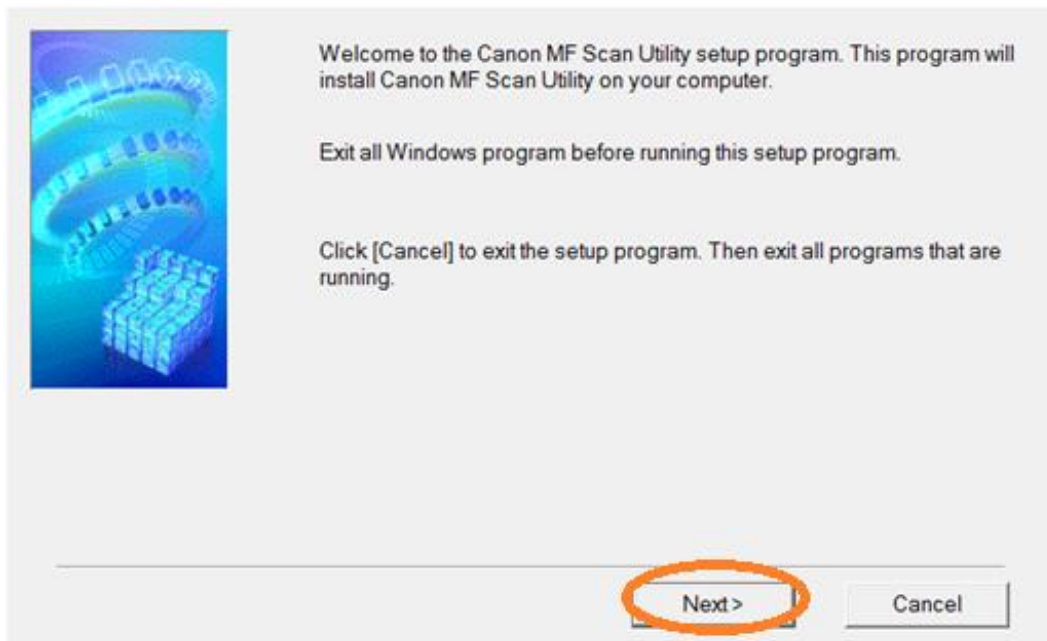
23. 開啓「SETUP.exe」檔案

Open "SETUP.exe" file

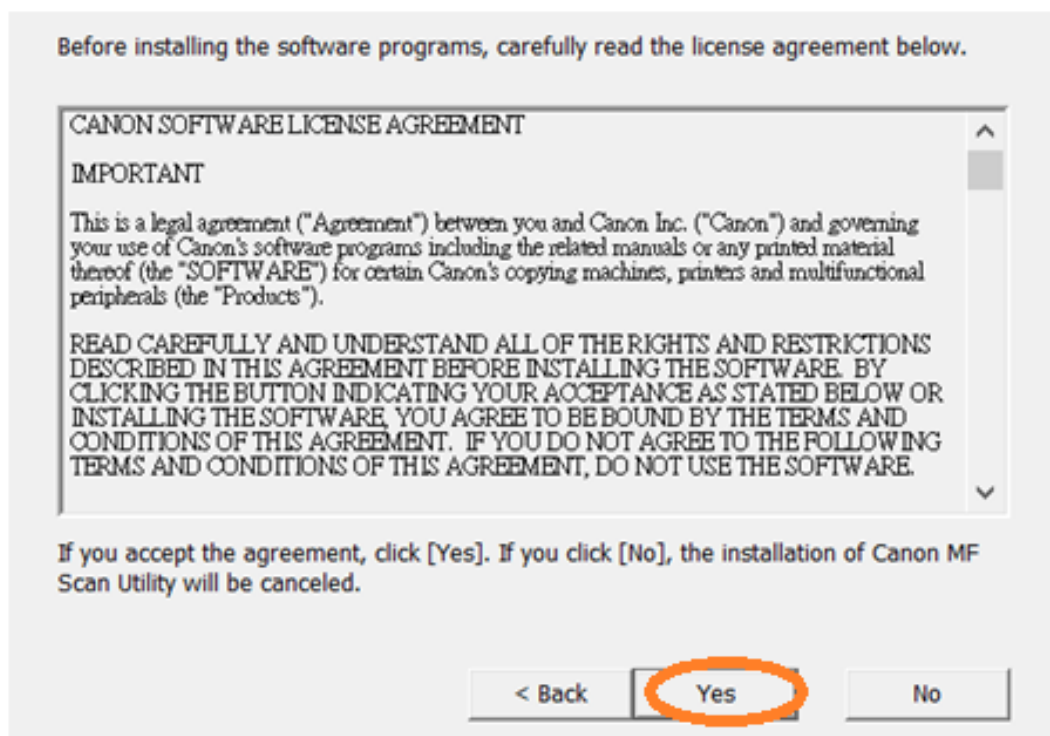


24. 按「Next >」

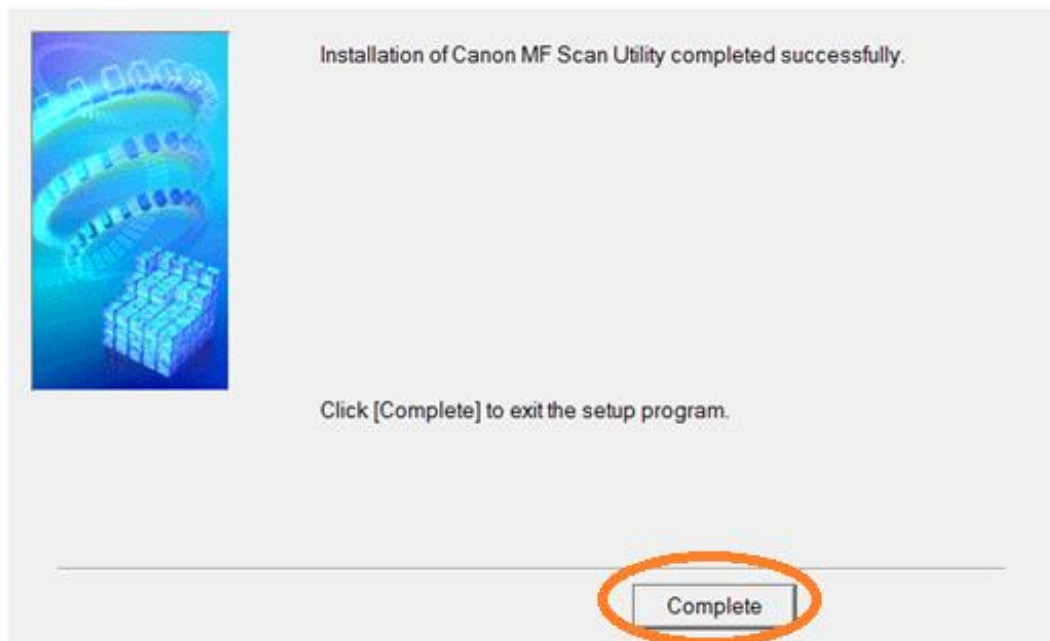
Click "Next >"



25. 按「Yes」
Click “Yes”



26. 按「Complete」
Click “Complete”



-完-
-End-