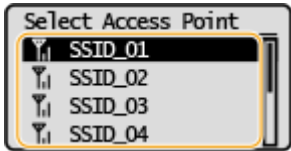


透過無線網路連接安裝 MF113w 印表機的驅動程式步驟 (以 Win 10 作示範)
MF113w printer driver Installation Guide for Windows via Wi-Fi connection (Win 10 as example)

先將打印機連接到路由器，詳細可參考以下步驟：

The Connection by selecting a wireless router:

1. 在首頁畫面中選擇 <功能表>
Select "Menu" in the Home Screen
2. 選擇「網路設定」
Select "Network Settings"
- 若顯示 PIN 碼輸入畫面，請使用數字鍵輸入 PIN 碼，然後點選「套用」
- If a screen for entering a PIN is displayed, enter the PIN with the numeric keys and tap "Apply"
3. 選「無線域網路設定」
Select "Select Wired/Wireless LAN" and tap "Wireless LAN"
4. 閱讀顯示訊息後按"OK"
Read the message that is displayed, and select "OK".
5. 選「SSID 設定」
Select "SSID setting"
6. 選「選擇存取點」
Select "Select Access Point"
7. 選擇無線區域網路路由器
Select the router SSID

8. 輸入您記下的網路鍵值
使用數字鍵輸入網路金鑰(路由器密碼)，然後點選「套用」
Enter the network key using the numeric keys, and select "Apply"
9. 點選「是」
Select "yes"
10. 等待直至顯示<已連接>，選<關閉>
Wait until message <Connected.> is displayed. Select <Close>

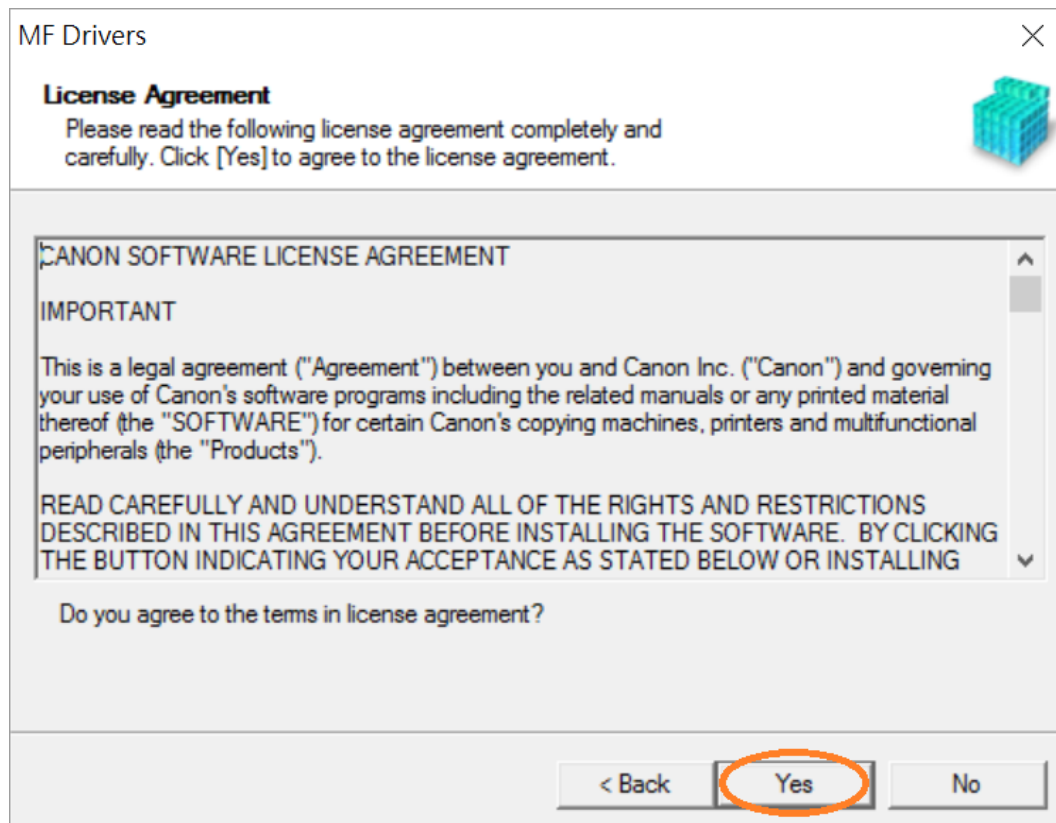
下載及安裝步驟

Driver download and installation procedure

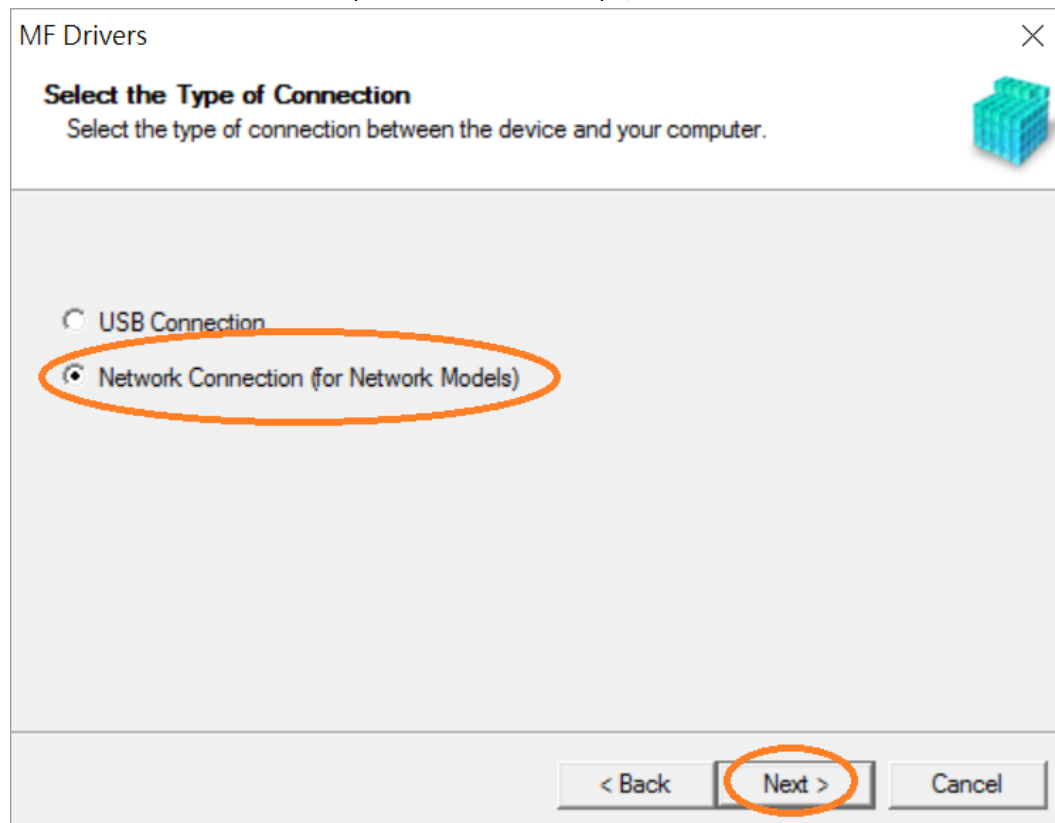
11. 到佳能網站<https://hk.canon/en/support/imageCLASS%20MF113w/model>，下載印表機的驅動程式
Go to: <https://hk.canon/en/support/imageCLASS%20MF113w/model>, download the printer driver
12. 選擇並下載以下檔案
Choose and download below files:
 - 打印機驅動程式 / Printer Driver
[\[Windows x64bit\] MF113w/MF112/MF913w/MF912 MFDivers \(UFR II / ScanGear\)](#)
 - 掃描器軟件 / Scanning software
[\[Windows 32bit & 64bit\] MF Scan Utility Ver.x.x.x.x](#)
13. 下載完成後，打開驅動程式安裝檔案「MF110MF910MFDriverVxxxWxxukEN.exe」
Open driver installation file “MF110MF910MFDriverVxxxWxxukEN.exe” after downloaded
14. 按「Next >」
Click “Next >”



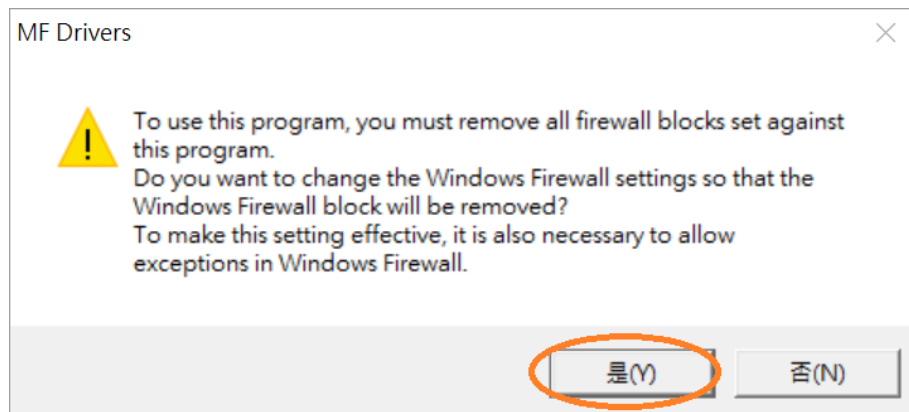
15. 按「Yes」
Click “Yes”



16. 選擇「Network Connection (for Network Models)」，按「Next >」
Select “Network Connection (for Network Models)” , click “Next >”

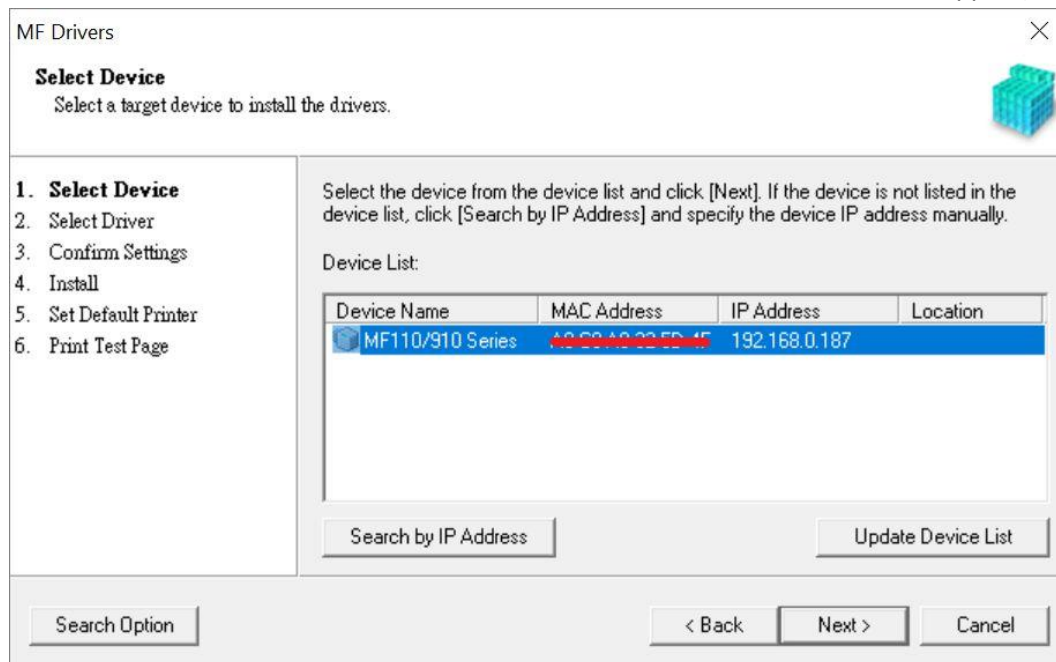


17. 按「是」
Click "Yes"



18. 選擇「MF110/910 Series」，按「Next >」（如清單沒有印表機，請選「Search by IP Address」方法連接或聯絡客戶服務熱線 31912333 尋求支援）

Select "MF110/910 Series", click "Next >" (If there is no printer on the list, please select "Search by IP Address" method to connect or contact customer service hotline 31912333 to seek for support)



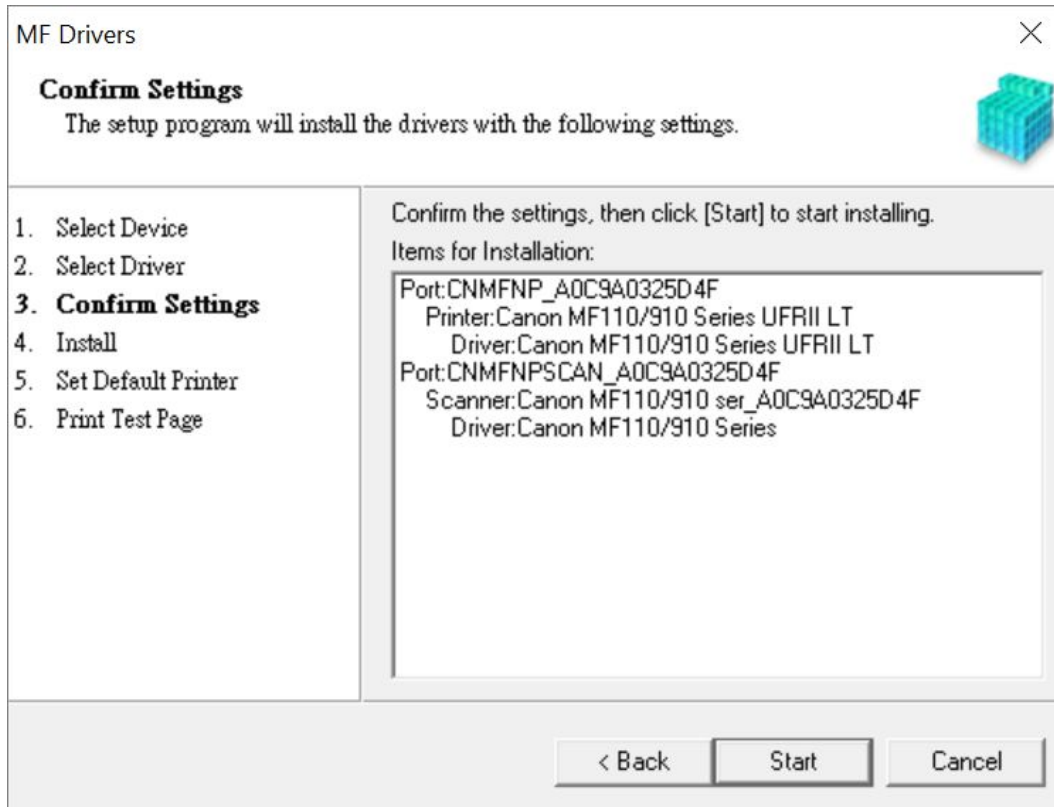
19. 確認已剔選「Printer」「Scanner」，按「Next >」
Confirm the “Printer” “Scanner” box is checked, click “Next >”

The screenshot shows the 'MF Drivers' window with the title bar 'MF Drivers' and a close button. The main heading is 'Select Driver' with the instruction 'Select the drivers to install.' and a small printer icon. On the left, a list of steps is shown: 1. Select Device, 2. **Select Driver**, 3. Confirm Settings, 4. Install, 5. Set Default Printer, 6. Print Test Page. The main area displays 'Target Device: Canon MF110/910 Series' and 'Driver to Install:' with two checked checkboxes: 'Printer' and 'Scanner'. There is also an unchecked checkbox for 'Canon Driver Information Assist Service' with a descriptive text below it. At the bottom, there are three buttons: '< Back', 'Next >', and 'Cancel'.

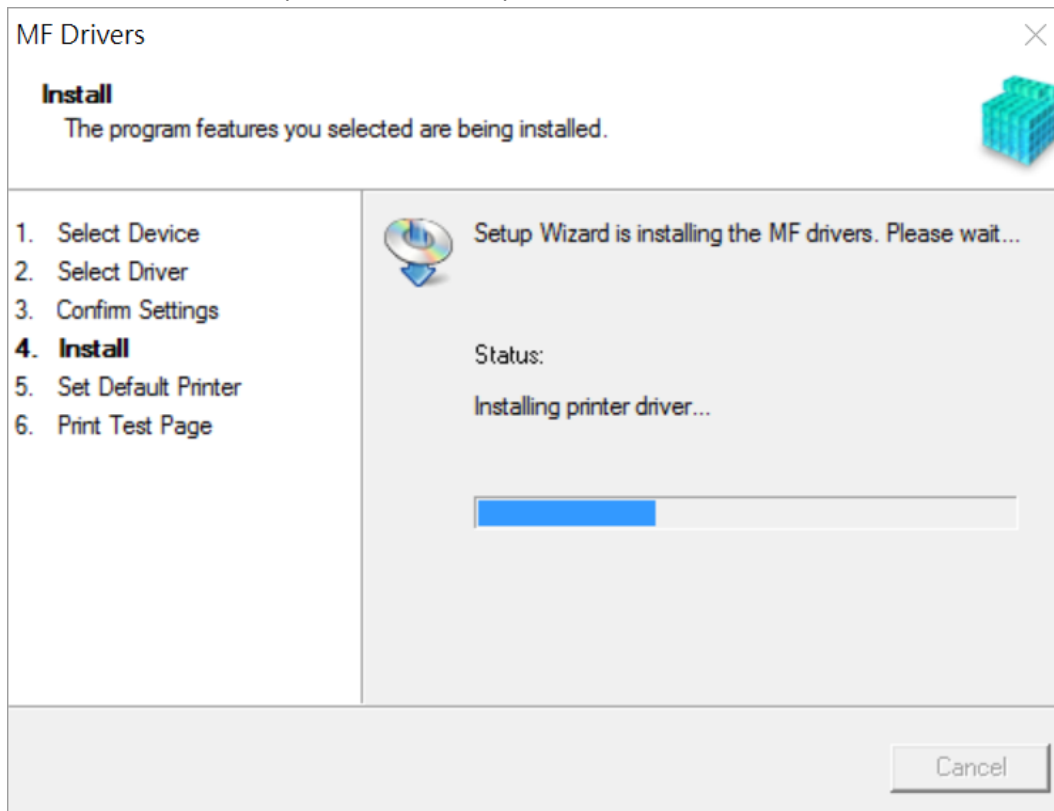
20. 按「Next >」
Click “Next >”

The screenshot shows the 'MF Drivers' window with the title bar 'MF Drivers' and a close button. The main heading is 'Confirm Settings' with the instruction 'Confirm the following setting details.' and a small printer icon. On the left, a list of steps is shown: 1. Select Device, 2. Select Driver, 3. **Confirm Settings**, 4. Install, 5. Set Default Printer, 6. Print Test Page. The main area contains explanatory text: 'You can change the printer name. If you specify this printer as a shared printer, you can specify the shared printer name and set an additional driver (alternate driver). Confirm the settings, and then click [Next].' Below this is the 'Printer' section with 'Port: CNMFNP_A0C9A0325D4F' and 'Driver: Canon MF110/910 Series UFR II LT'. The 'Printer Name' field contains 'Canon MF110/910 Series UFR II LT'. There is an unchecked checkbox for 'Use as Shared Printer' and a 'Shared Name' field. A 'Drivers to Add...' button is also present. At the bottom right, it shows 'Current Device: 1' and 'Number of Devices to Set: 1'. At the bottom, there are three buttons: '< Back', 'Next >', and 'Cancel'.

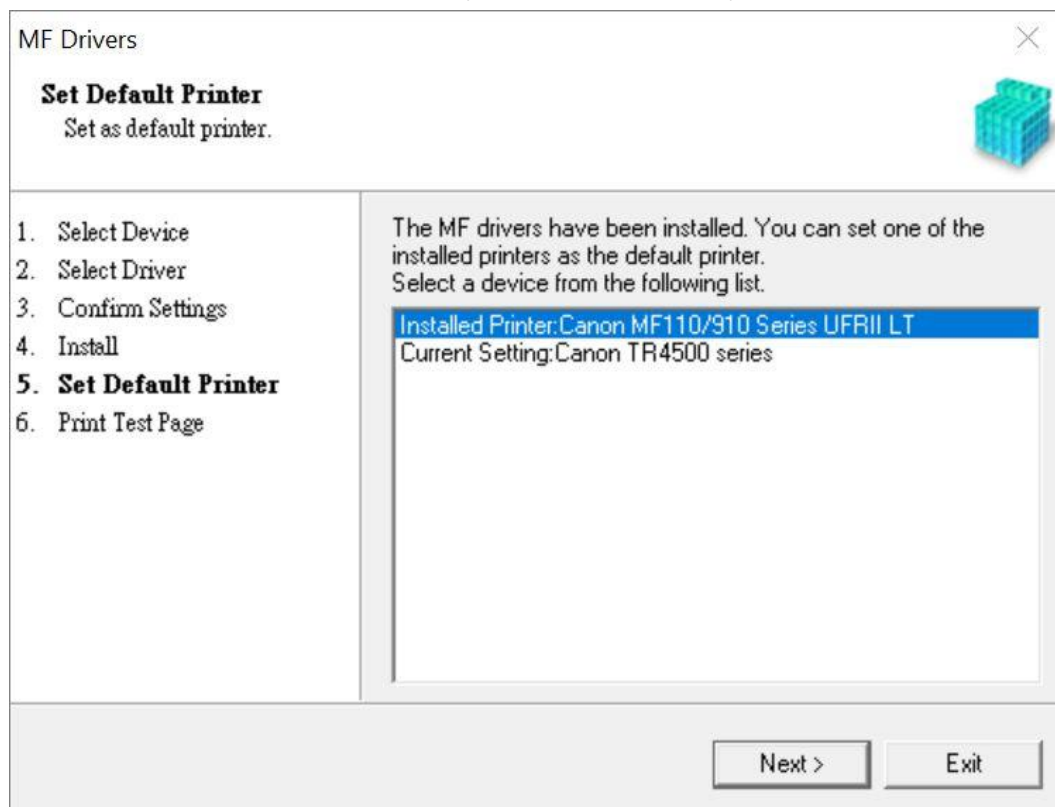
21. 按「Start」
Click "Start"



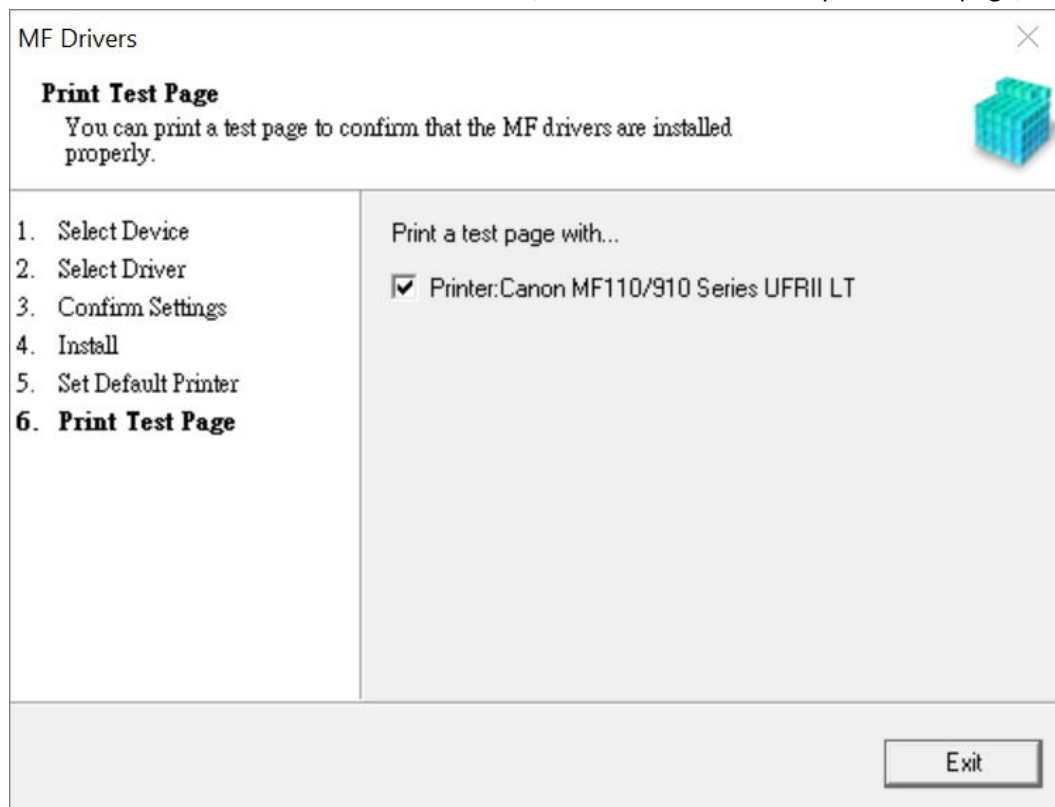
22. 請等待安裝精靈成完安裝
Please wait for the setup wizard to accomplish installation



23. 選擇「Installed Printer: Canon MF110/910 Series UFR II LT」，按「Next >」
Select "Installed Printer: Canon MF110/910 Series UFR II LT" , click "Next >"



24. 可剔選「Printer: Canon MF110/910 Series UFR II LT」以進行列印測試頁，按「Exit」
Can check the box at "Printer: Canon MF110/910 Series UFR II LT" to print a test page, click "Exit"

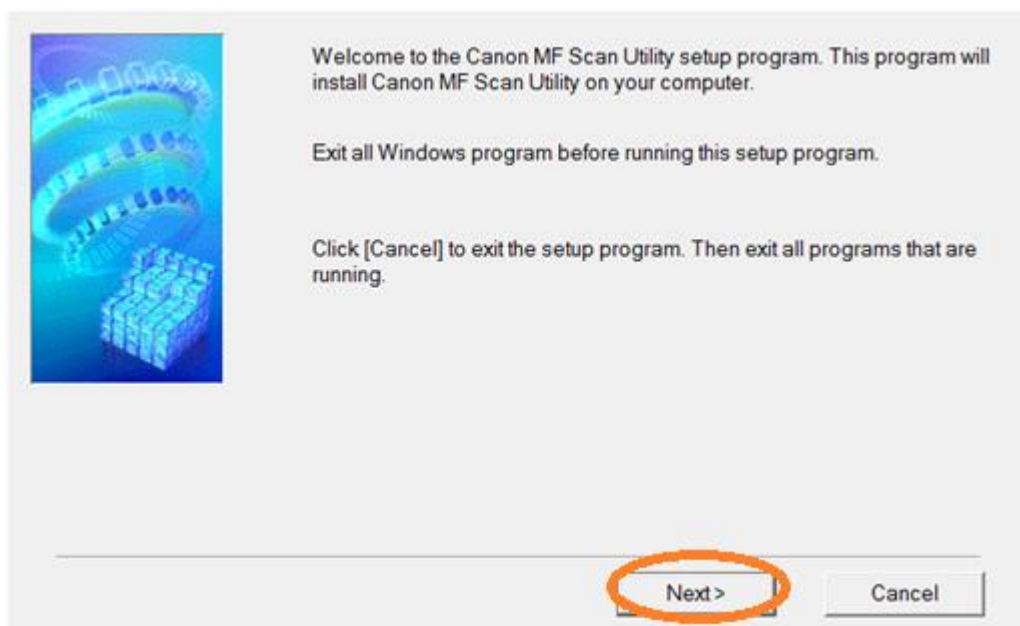


安裝掃描軟件 MF Scan Utility

MF Scan Utility installation procedure

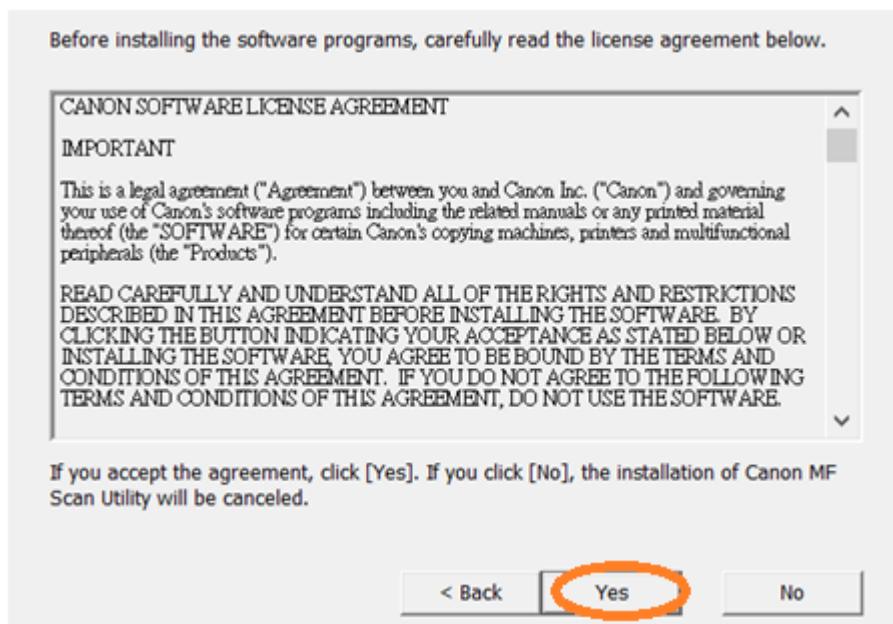
25. 執行檔案〔winmfscanutilityvxxxx.exe〕按「Next」

Run the file [winmfscanutilityvxxxx.exe] , click “Next”



26. 按「Yes」

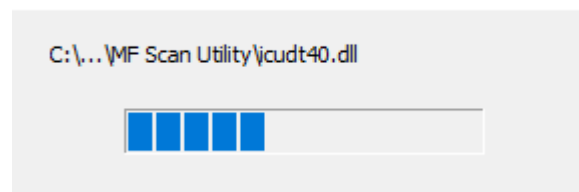
Click “Yes”



27. 等待安裝程序完成

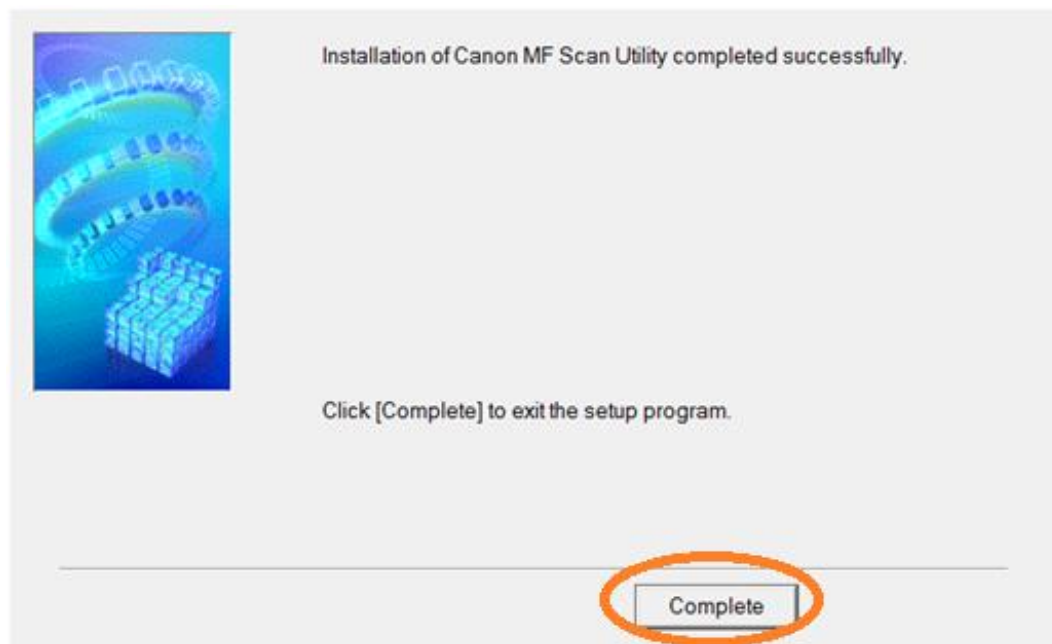
Waiting for the installation progress

Install



28. 按「Complete」

Click "Complete"



-完-
-End-