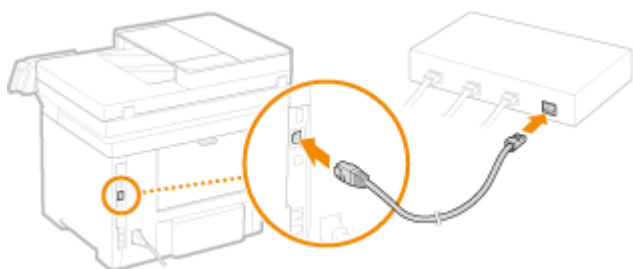


透過乙太網路連接安裝 MF429x 印表機的驅動程式步驟 (以 Win 10 作示範)

**MF429x printer driver Installation Guide for Windows via LAN connection (Win 10 as example)**

**\*\*使用乙太網路連接線接駁到印表機及開啟印表機\*\***

**\*\*Connect the machine to a router by using a LAN cable and turn on computer\*\***



先將打印機連接到網路，詳細可參考以下步驟

Connect printer to network first, please refer to following procedure

1. 開啟印表機  
Turn on the printer
2. 在主畫面中點選「功能表」  
Tap "Menu" in the Home Screen
3. 點選「參數選擇」，再點選「網路」  
Tap "Preferences", then tap "Network"
4. 點選「有線 / 無線區域網路」  
Tap "Select Wired / Wireless LAN"
5. 點選 <有線區域網路>  
Tap "Wired LAN"

6. 到佳能網站 <https://hk.canon/en/support/imageCLASS%20MF429x/model> ，下載印表機的驅動程式  
Go to <https://hk.canon/en/support/imageCLASS%20MF429x/model>, download the printer driver

7. 選擇並下載以下檔案

Choose and download below files:

- 打印機驅動程式 / Printer Driver

[\[Windows x64bit\] MF429x/MF426dw MFDivers \(Generic Plus UFR II/ Generic Plus PCL6/ Generic Plus PS3/ Generic FAX/ ScanGear\)](#)

- 掃描器軟件 / Scanning software

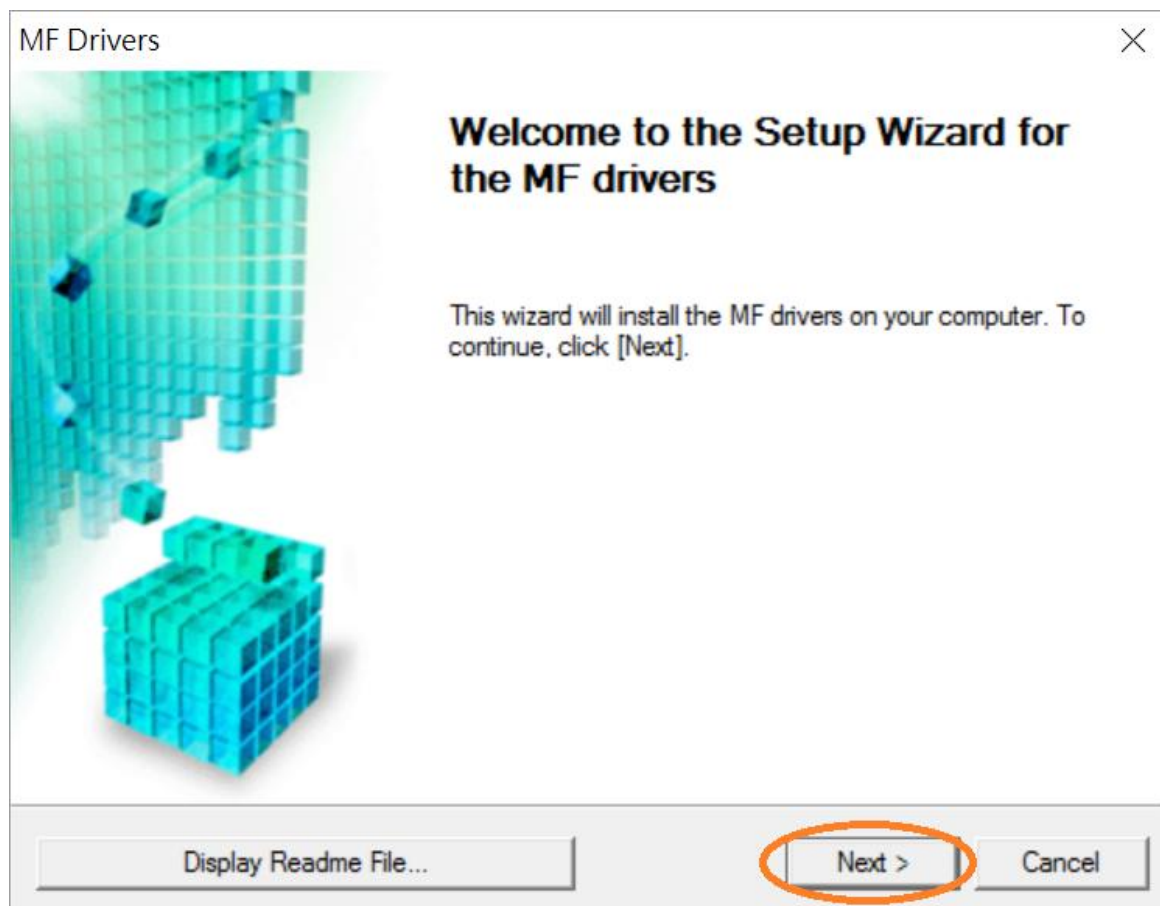
[\[Windows 32bit & 64bit\] MF Scan Utility Ver.x.x.x.x](#)

8. 下載完成後，打開驅動程式安裝檔案「MF429MFDriverVxxxxxxx.exe」

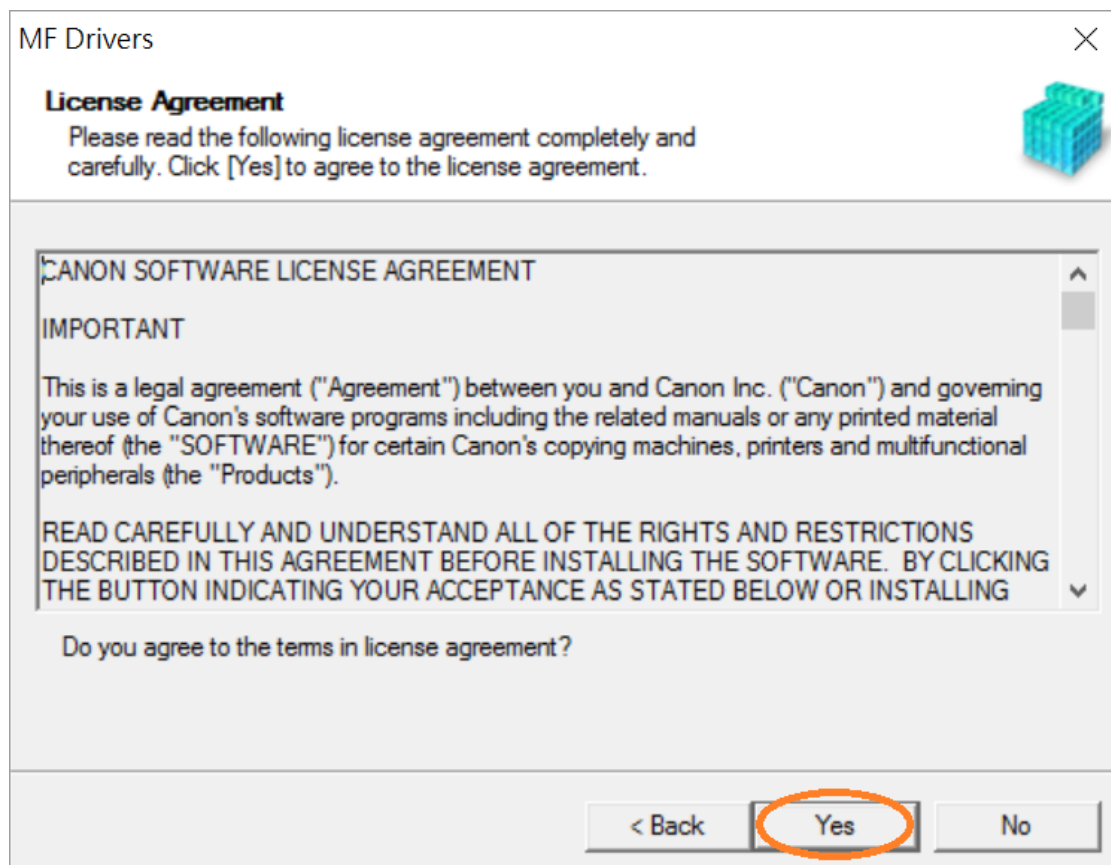
Open driver installation file "MF429MFDriverVxxxxxxx.exe" after downloaded

9. 按「Next >」

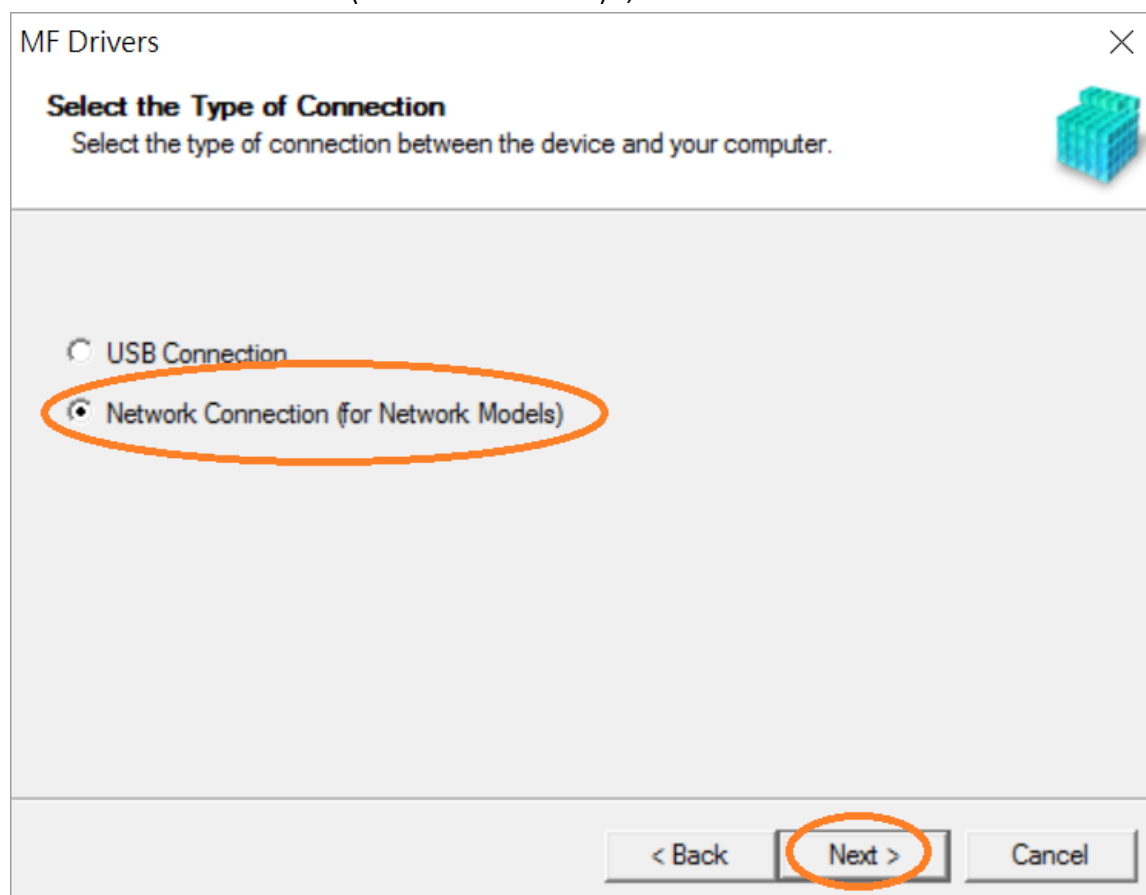
Click "Next >"



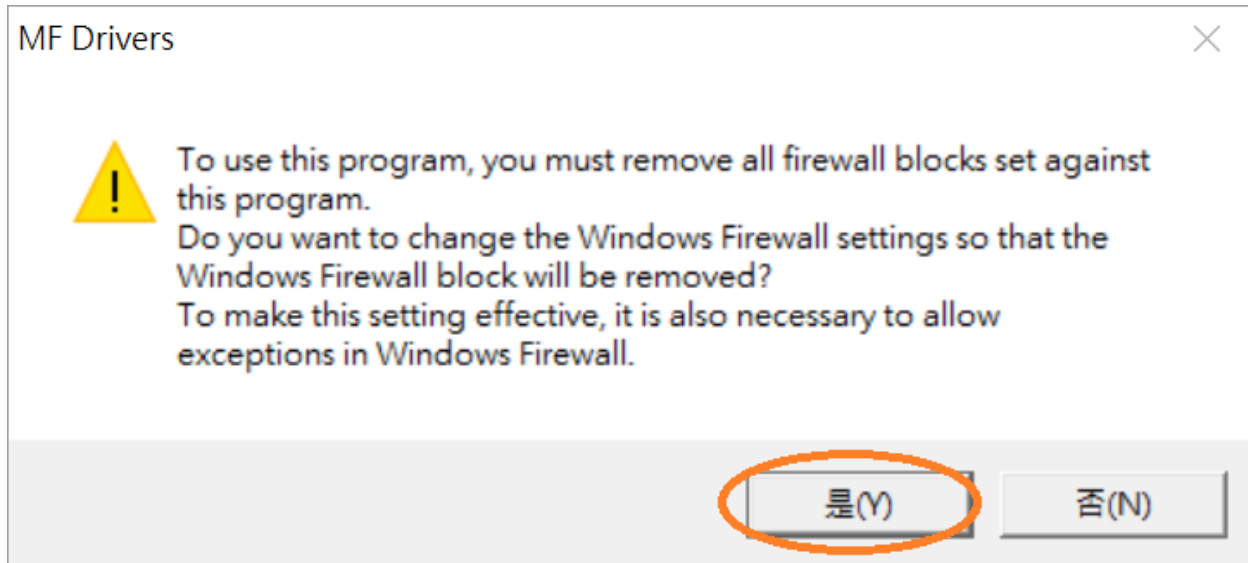
10. 按「Yes」  
Click "Yes"



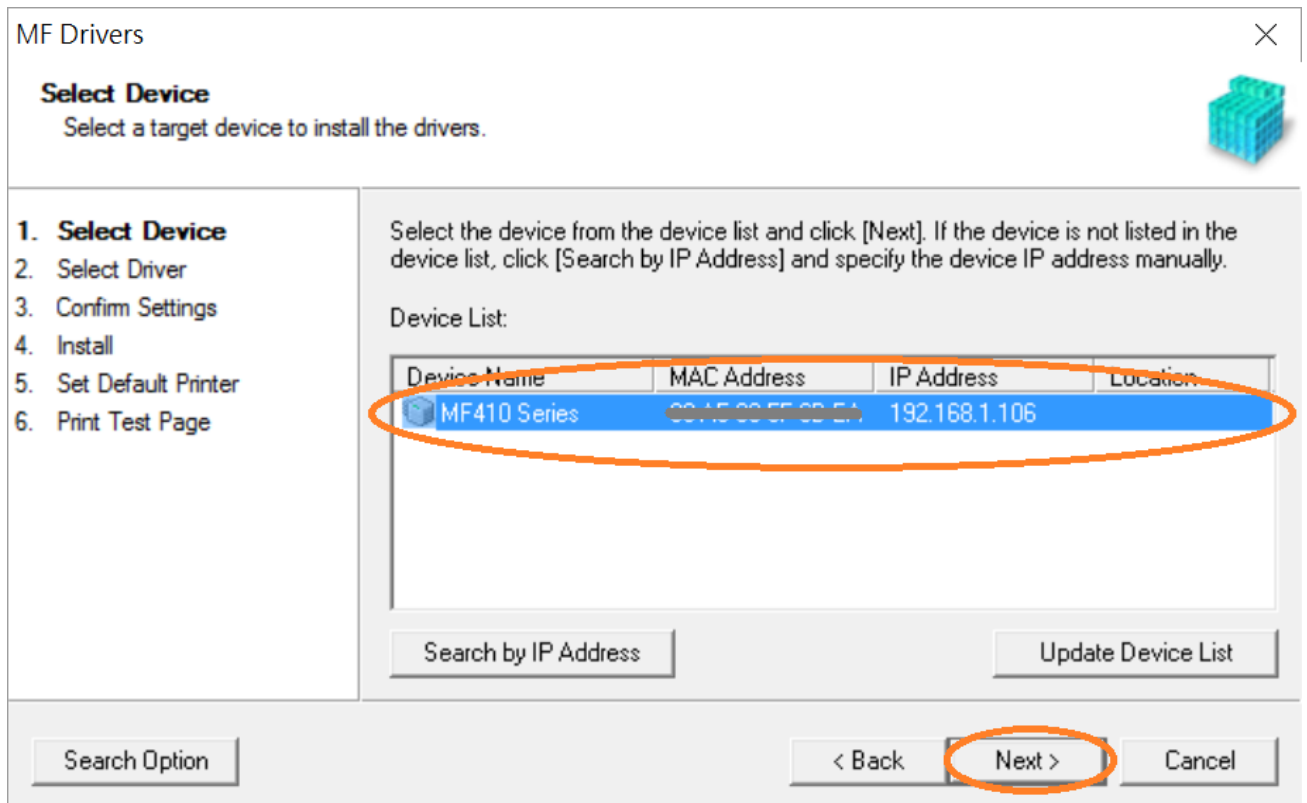
11. 選擇「Network Connection (for Network Models)」，按「Next >」  
Select "Network Connection (for Network Models)", click "Next >"



12. 按「是」  
Click "Yes"



13. 選擇「MF420 Series」（以 MF410 Series 為例子），按「Next >」（如清單沒有印表機，請選「Search by IP Address」方法連接或聯絡客戶服務熱線 31912333 尋求支援）  
Select "MF420 Series" (MF410 Series as example), click "Next >" (If there is no printer on the list, please select "Search by IP Address" method to connect or contact customer service hotline 31912333 to seek for support)



14. 確認已剔選「Printer」、「Fax (for Supported Models)」、「Scanner」（以 MF410 Series 為例子），按「Next >」

Confirm the “Printer” “Fax for Supported Models” “Scanner” box is checked(MF410 Series as example), click “Next >”

MF Drivers

**Select Driver**  
Select the drivers to install.

1. Select Device  
2. **Select Driver**  
3. Confirm Settings  
4. Install  
5. Set Default Printer  
6. Print Test Page

Target Device  
MF410 Series

Driver to Install:

Printer  
 Fax (for Supported Models)  
 Scanner

Canon Driver Information Assist Service  
When you install this service and use shared or local printers, functions that allow you to obtain device information will be added to your computer.

< Back **Next >** Cancel

15. 選擇「UFR II Printer Driver」（以 MF410 Series 為例子），按「Next >」

Select “UFR II Printer Driver” (MF410 Series as example), click “Next >”

MF Drivers

**Select Driver**  
Select the drivers to install.

1. Select Device  
2. **Select Driver**  
3. Confirm Settings  
4. Install  
5. Set Default Printer  
6. Print Test Page

Target Device  
MF410 Series

Printer Drivers to Install:


UFR II Printer Driver  
 PCL6 Printer Driver  
 PS3 Printer Driver

< Back **Next >** Cancel

16. 按「Next >」(以 MF410 Series 為例子)  
Click "Next >" (MF410 Series as example)

MF Drivers ×

**Confirm Settings**  
Confirm the following setting details.



1. Select Device
2. Select Driver
- 3. Confirm Settings**
4. Install
5. Set Default Printer
6. Print Test Page

You can change the printer name. If you specify this printer as a shared printer, you can specify the shared printer name and set an additional driver (alternate driver). Confirm the settings, and then click [Next].

**Printer**

Port: CNMFNP\_00A0000F000E\*

Driver: Canon MF410 Series UFR II

Printer Name:

Use as Shared Printer


Shared Name:

Current Device: 1  
Number of Devices to Set: 2

17. 按「Next >」(以 MF410 Series 為例子)  
Click "Next >" (MF410 Series as example)

MF Drivers ×

**Confirm Settings**  
Confirm the following setting details.



1. Select Device
2. Select Driver
- 3. Confirm Settings**
4. Install
5. Set Default Printer
6. Print Test Page

You can change the fax name. If you specify this fax as a shared fax, you can specify the shared fax name and set an additional driver (alternate driver). Confirm the settings, and then click [Next].

**Fax**

Port: CNMFNP\_00A0000F000E\*

Driver: Canon Generic FAX Driver (FAX)

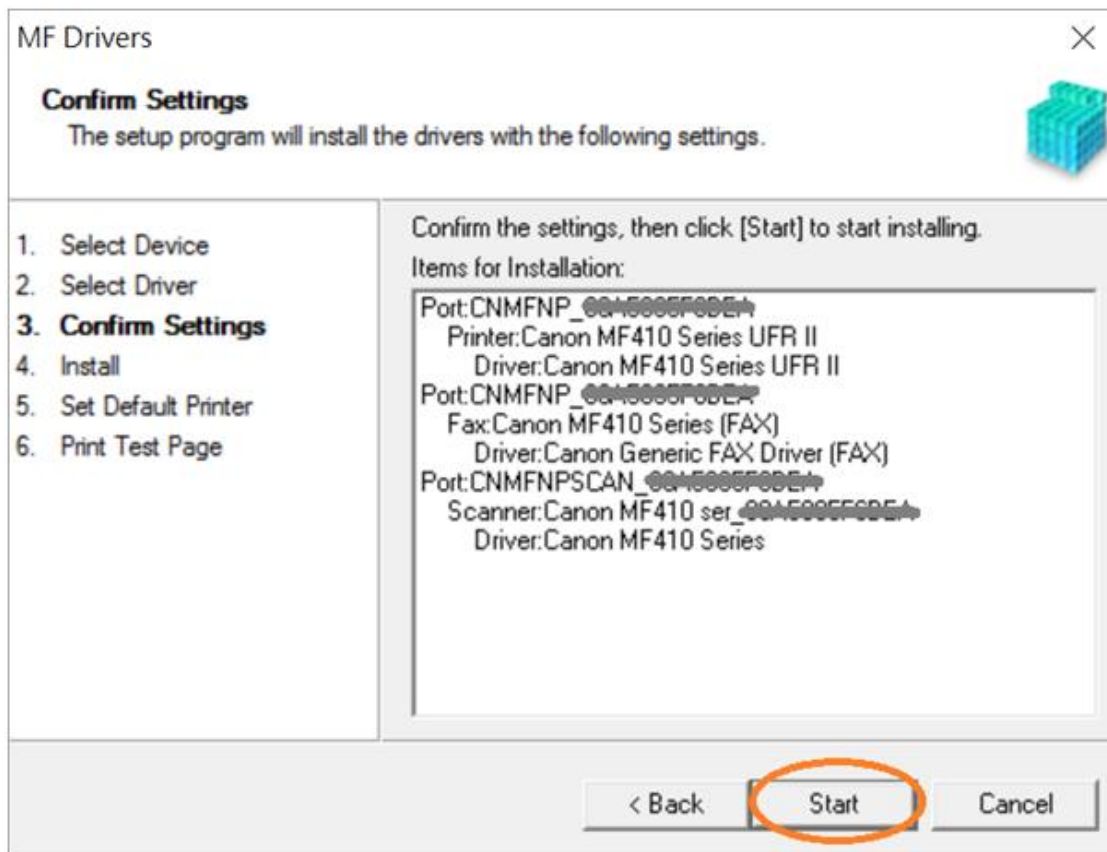
Fax Name:

Use as Shared Fax

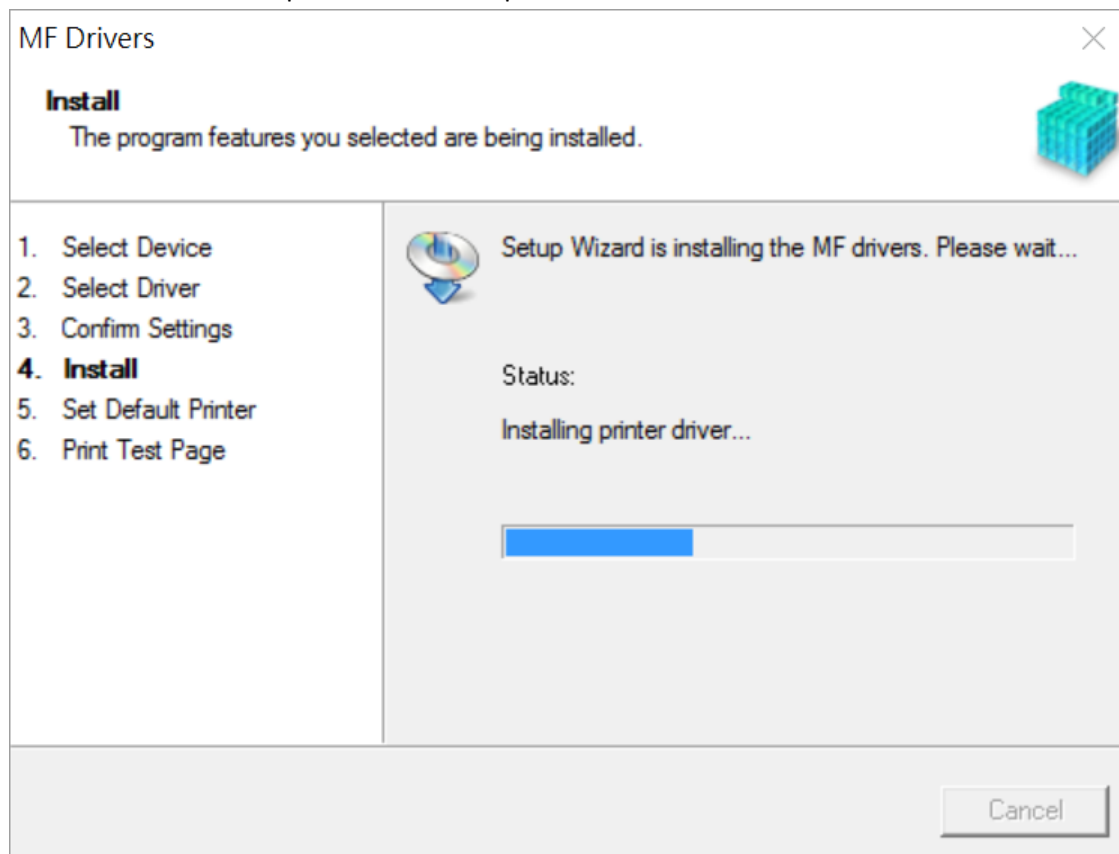
Shared Name:

Current Device: 2  
Number of Devices to Set: 2

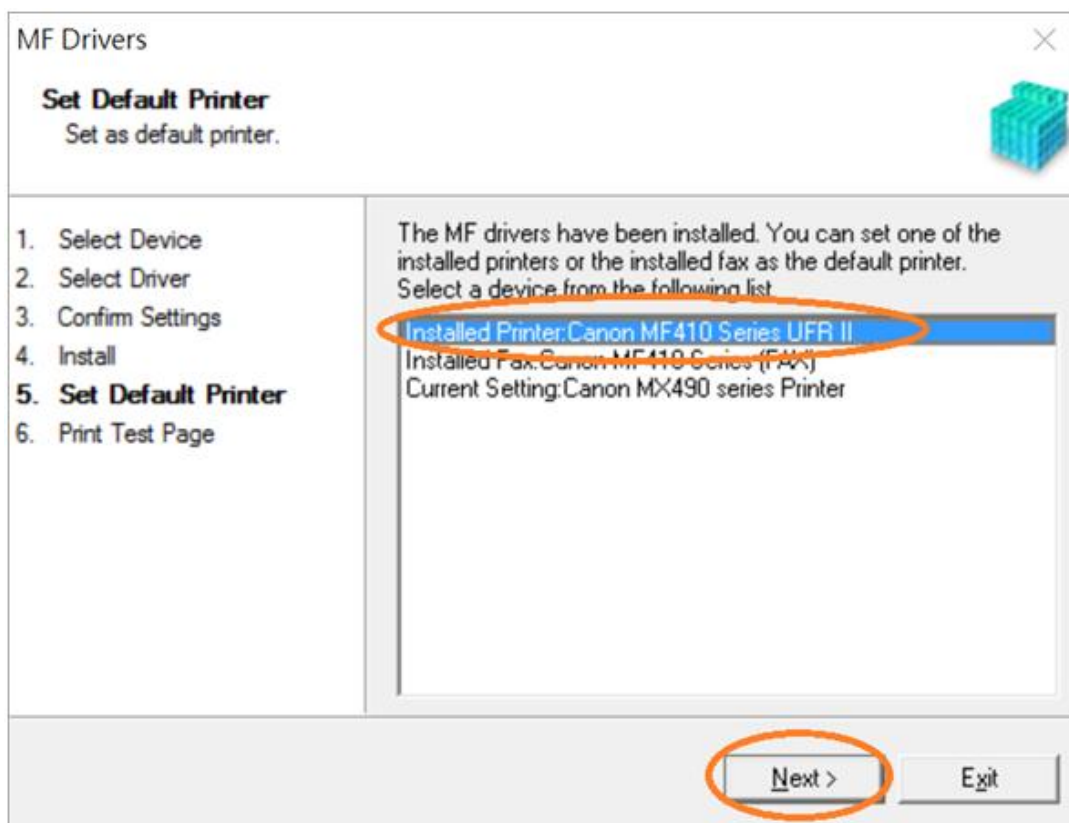
18. 按「Start」（以 MF410 Series 為例子）  
Click “Start” (MF410 Series as example)



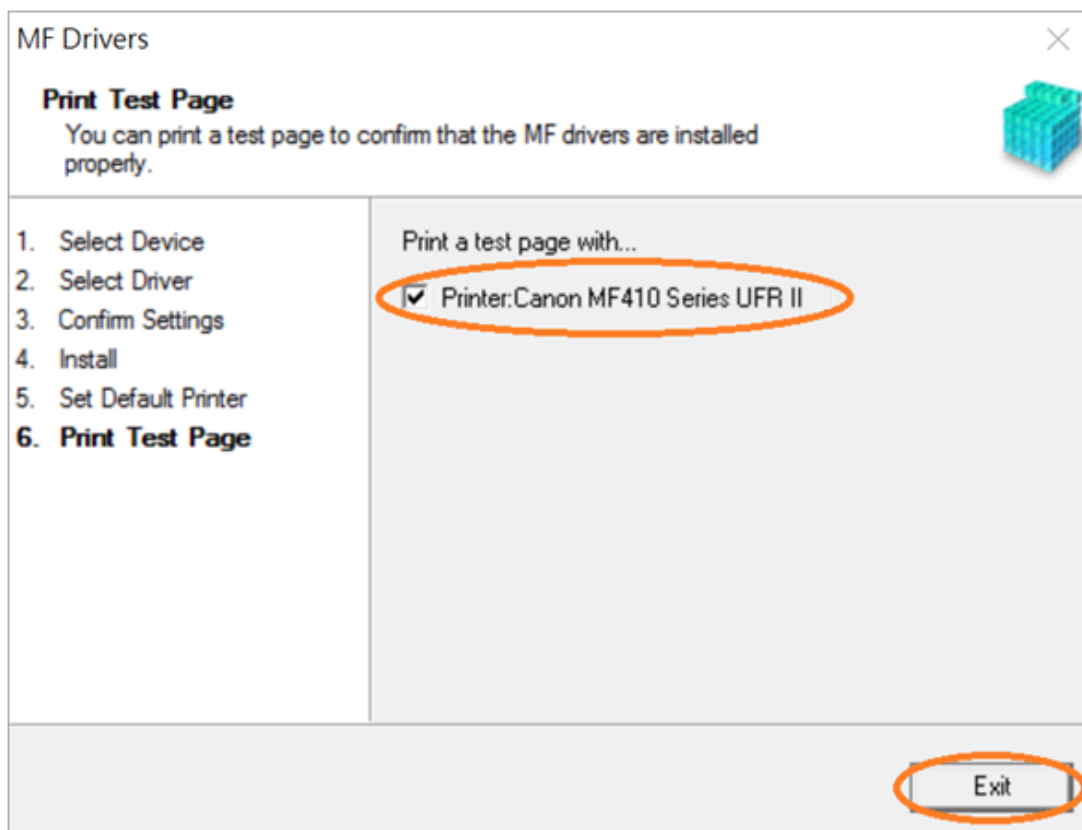
19. 請等待安裝精靈成完安裝  
Please wait for the setup wizard to accomplish installation



20. 選擇「Installed Printer: Canon MF420 Series UFR II」（以 MF410 Series 為例子），按「Next >」  
Select "Installed Printer: Canon MF420 Series UFR II" (MF410 Series as example), click "Next >"



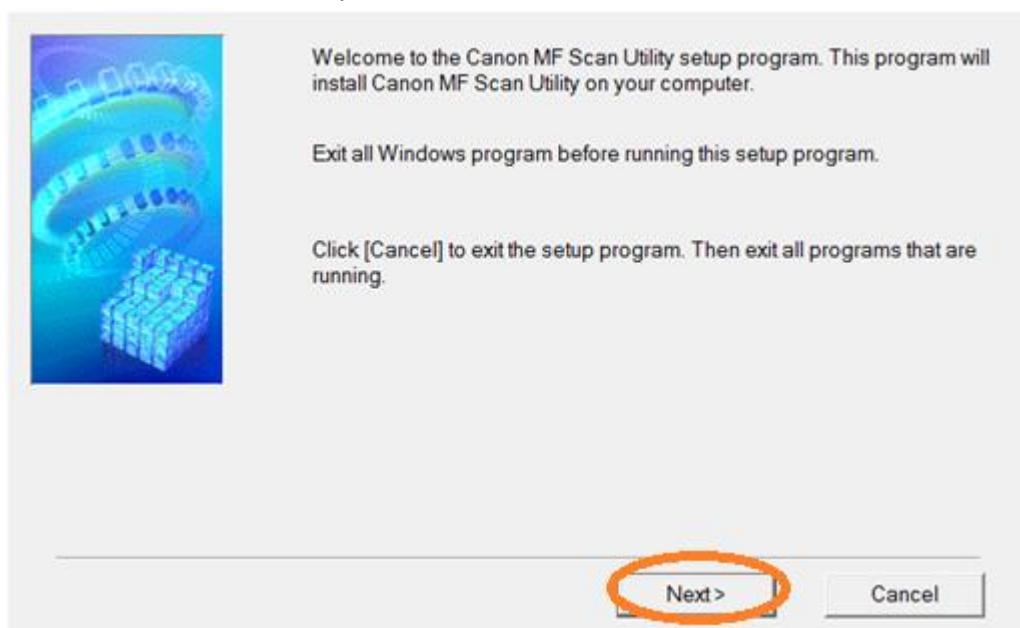
21. 可點選「Printer: Canon MF420 Series UFR II」以（MF410 Series 為例子）進行列印測試頁，按「Exit」  
Can check the box at "Printer: Canon MF420 Series UFR II" (MF410 Series as example) to print a test page, click "Exit"



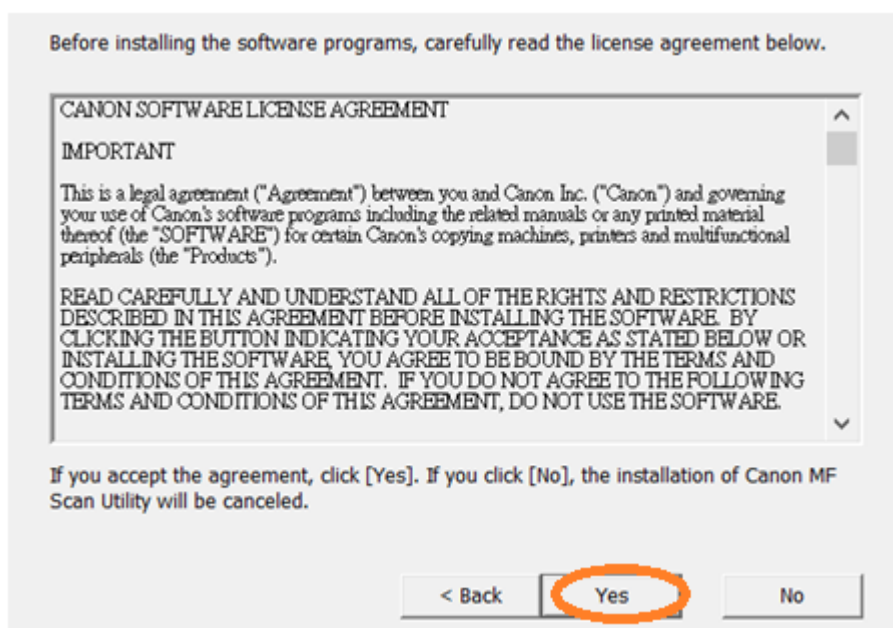


## 安裝掃描軟件MF Scan Utility MF Scan Utility installation procedure

22. 執行檔案 [ winmfscanutilityvxxxx.exe ] 按「Next」  
Run the file [winmfscanutilityvxxxx.exe] , click “Next”



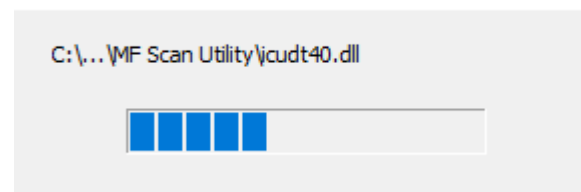
23. 按「Yes」  
Click “Yes”



24. 等待安裝程序完成

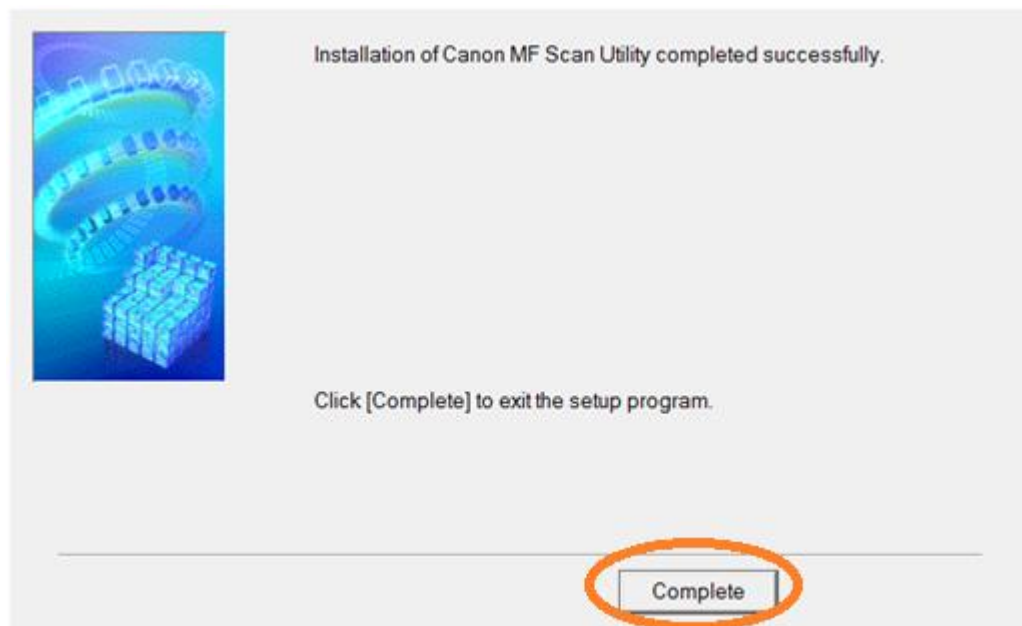
Waiting for the installation progress

Install



25. 按「Complete」

Click "Complete"



-完-

-End-