

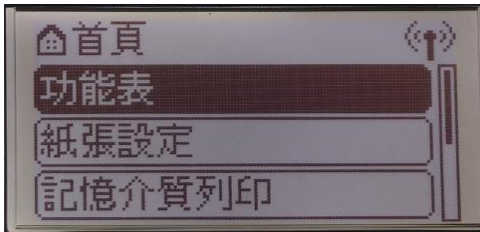
**LBP613Cdw 在 Windows 透過 LAN 連線連接印表機之驅動程式步驟**  
**Driver installation procedure for LBP613Cdw in Windows (Via Wired LAN)**

先將打印機連接到網路，詳細可參考以下步驟

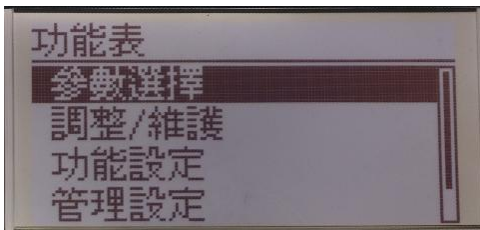
Connect printer to network first, please refer to following procedure

1. 開啟印表機  
Turn on the printer

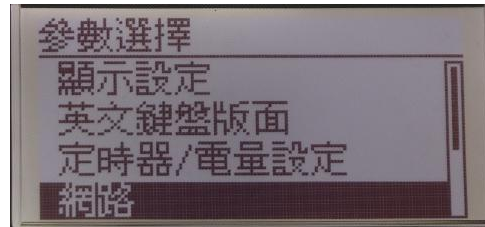
2. 在主畫面中選擇「功能表」，再按「OK」  
Choose “Menu” in the Home Screen, then press “OK”



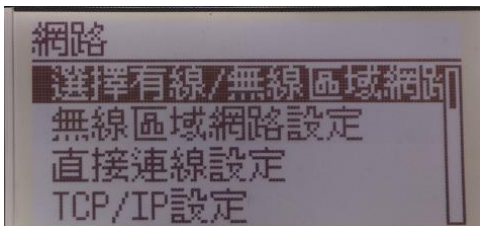
3. 選擇「參數選擇」，再按「OK」  
Choose “Preferences”, then press “OK”



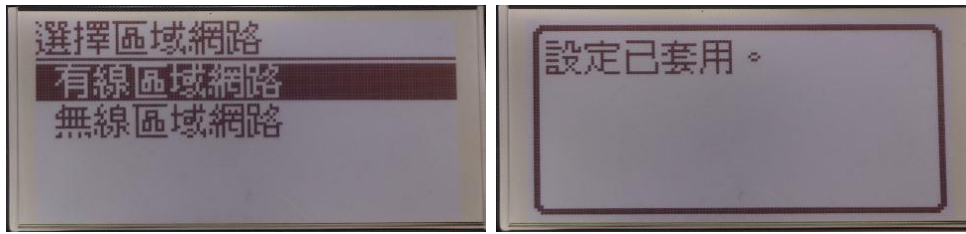
4. 選擇「網路」，再按「OK」  
Choose “Network Settings”, then press “OK”



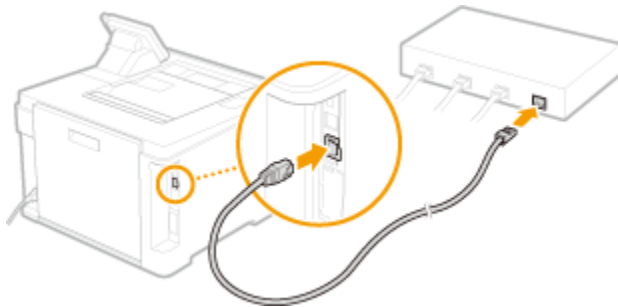
5. 選擇「選擇有線 / 無線區域網路」，再按「OK」  
Choose “Select Wired / Wireless LAN”, then press “OK”



6. 點選「有線區域網路」，再按「OK」  
Select "Wired LAN", then press "OK"



7. 使用區域網路纜線將本機連接到路由器，推入接頭，直至聽到喀嗒聲  
Connect the machine to a router by using a LAN cable, push the connector in until it clicks into place

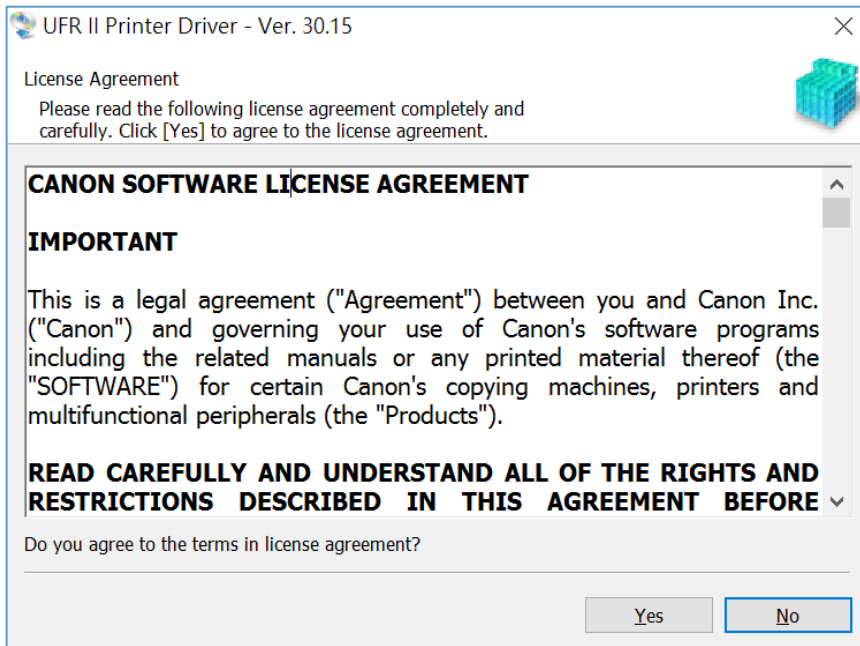


等待約 2 分鐘，直到本機的 IP 位址設定完成  
Wait approximately 2 minutes until the IP address settings of the machine are completed

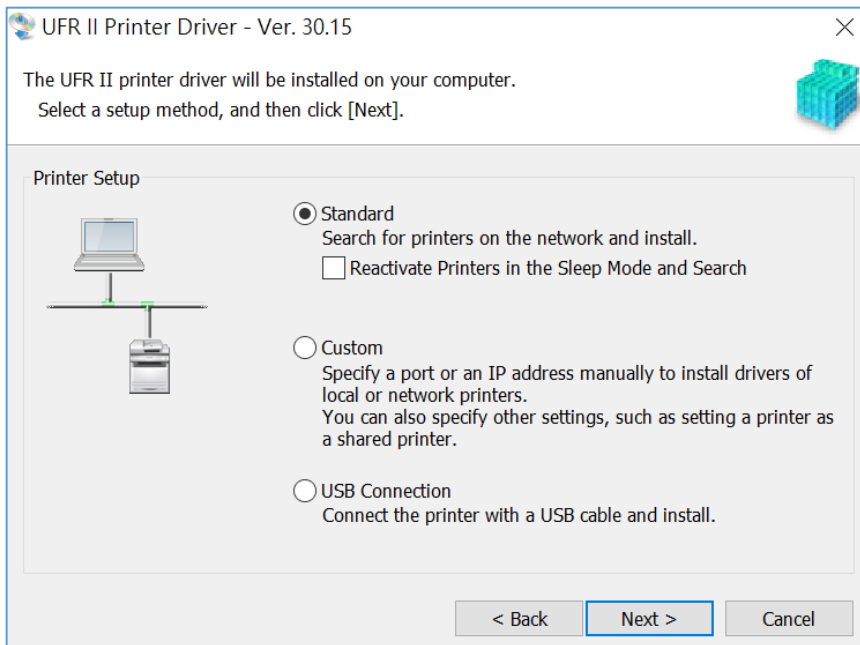
#### 下載及安裝步驟 Driver download and installation procedure

8. 到佳能網站 <https://hk.canon/en/support/imageCLASS%20LBP613Cdw/model>，下載印表機的驅動程式  
Go to: <https://hk.canon/en/support/imageCLASS%20LBP613Cdw/model>, download the printer driver
9. 選擇並下載以下檔案  
Choose and download below file:  
  
- 打印機驅動程式 / Printer Driver  
[\[Windows x32bit\] UFR II Printer Driver Vxx.xx](#)

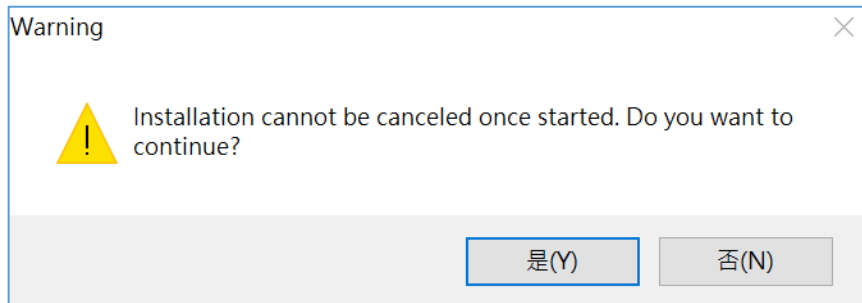
10. 執行檔案 [ UFR II\_Driver\_Vxxxx\_Wxx\_ukEN\_xx.exe ] 按 「 Yes 」  
Run File [UFR II\_Driver\_Vxxxx\_Wxx\_ukEN\_xx.exe], click “Yes”



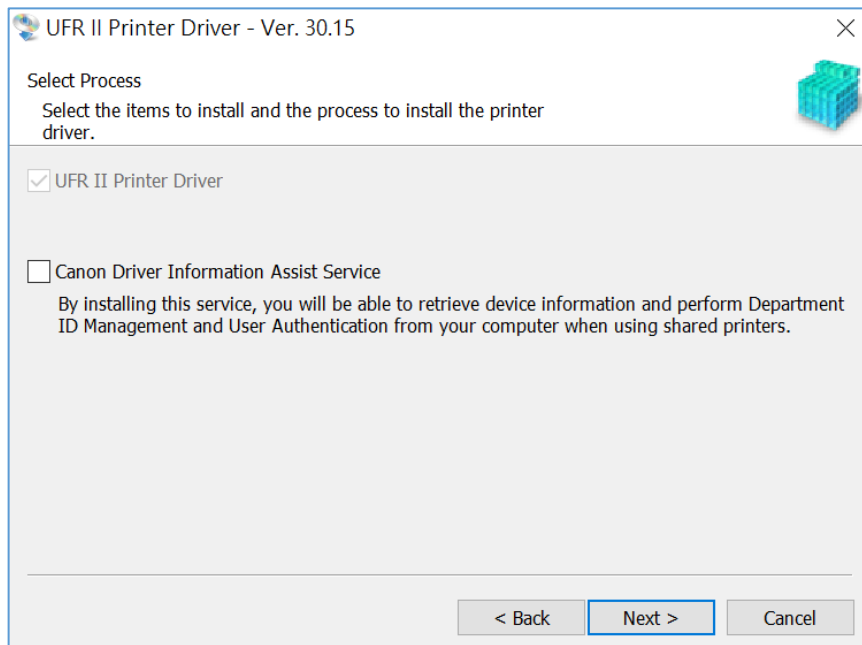
11. 選擇 「 Standard (for Network Models) 」 ，按 「 Next 」  
Choose “Standard (for Network Models)”, click “Next”



12. 按「是」  
Click “Yes”

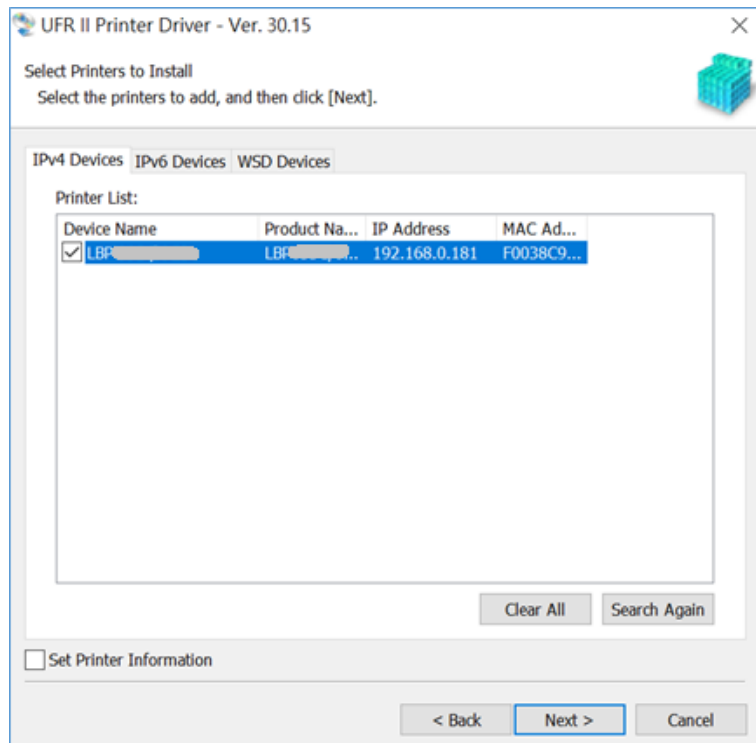


13. 按「Next」  
Click “Next”



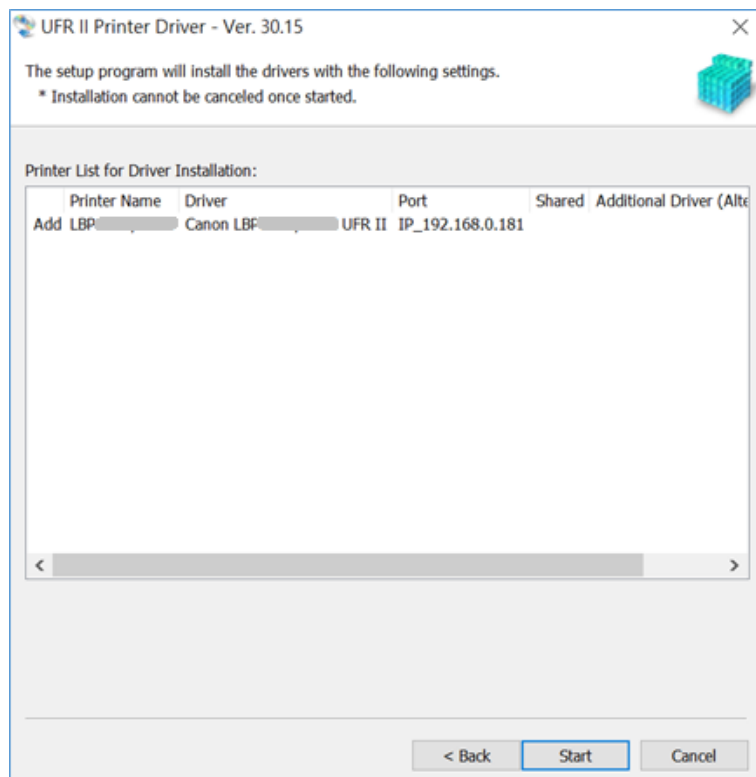
14. 程式會自動偵測網絡上的印表機，選擇後按「Next」

Program will automatic detect the network printer, choose printer and click "Next"



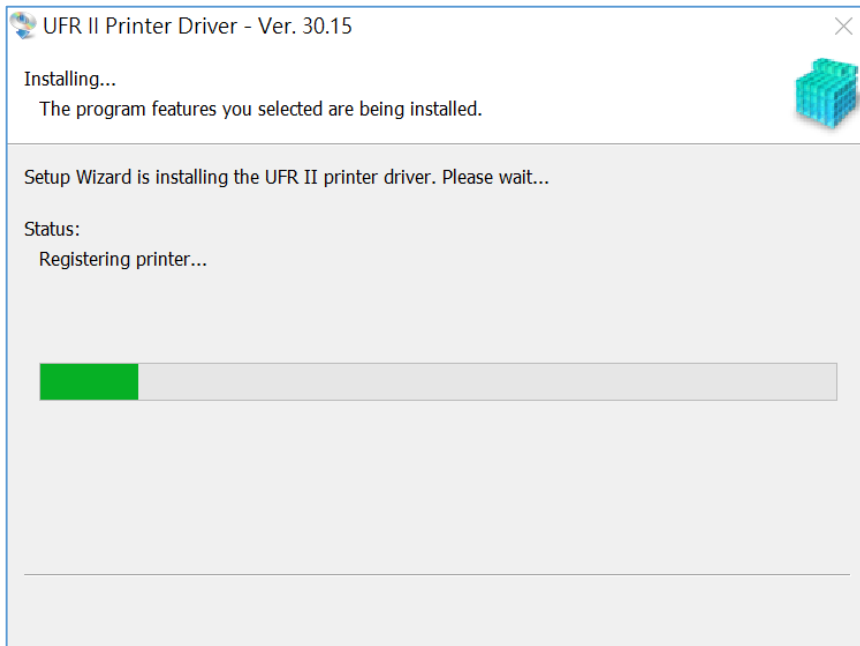
15. 按「Start」

Click "Start"

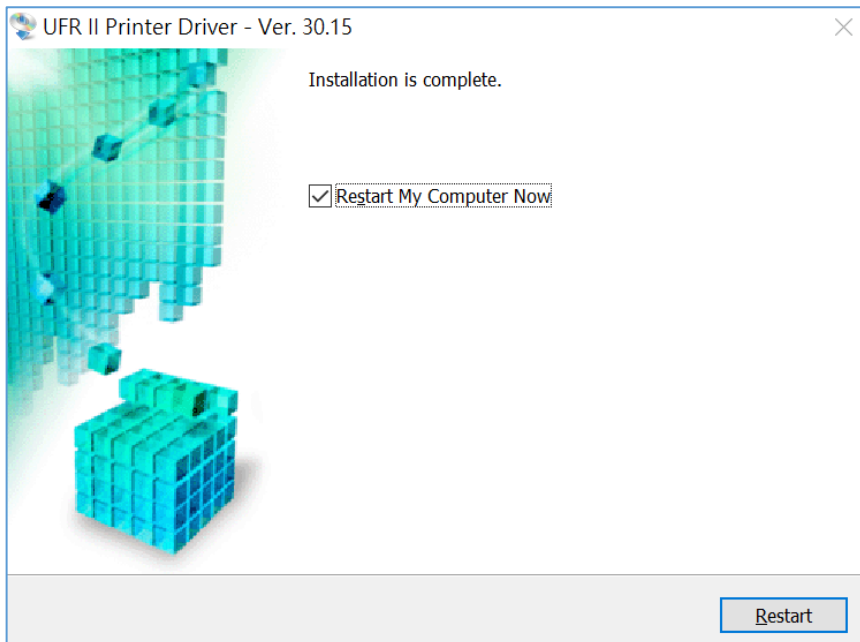


16. 等待安裝程序完成

Waiting for the installation progress



17. 安裝完成，按「Restart」 Installation is complete. Click "Restart"



-完-  
-End-