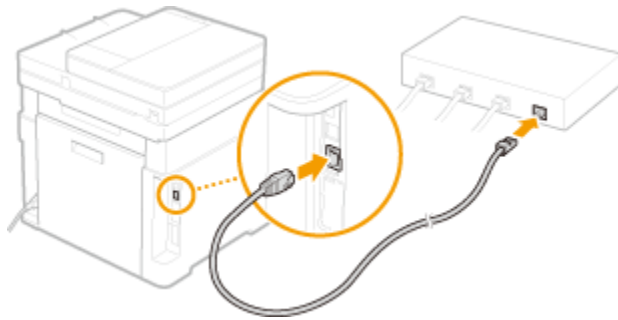


MF633Cdw 在 MAC OSX 透過有線 LAN 連線連接印表機之驅動程式步驟
Driver installation procedure for MF633Cdw in MAC OSX (Via LAN)

先將打印機連接到網路，詳細可參考以下步驟

Connect printer to network router first, refer to following procedure

1. 開啟印表機
Switch on the Printer
2. 在主畫面中點選「功能表」
Tap “Menu” in the Home Screen
3. 點選「參數選擇」，再點選「網路」
Tap “Preferences”, then tap “Network Settings”
4. 點選「有線 / 無線區域網路」
Tap “Select Wired / Wireless LAN”
5. 點選 <有線區域網路>
Tap “Wired LAN”
6. 使用區域網路纜線將本機連接到路由器
推入接頭，直至聽到喀嗒聲
Connect the machine to a router by using a LAN cable, push the connector in until it clicks into place



等待約 2 分鐘，直到本機的 IP 位址設定完成

Wait approximately 2 minutes until the IP address settings of the machine are completed

下載及安裝步驟

Driver download and installation procedure

7. 到佳能網站 <https://hk.canon/en/support/imageCLASS%20MF633Cdw/model>，下載印表機的驅動程式

Go to: <https://hk.canon/en/support/imageCLASS%20MF633Cdw/model>, download the printer driver

8. 選擇並下載以下檔案

Choose and download below files:

- 打印機驅動程式 / Printer Driver

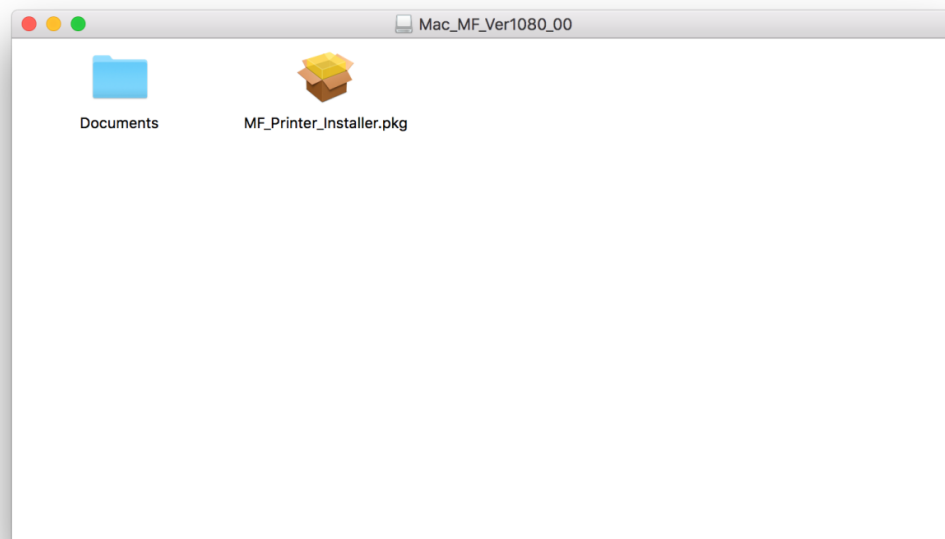
MF Printer Driver & Utilities for Macintosh Vxx.xx.x

- 掃描器軟件 / Scanning software

Scanner Driver & Utilities for Macintosh Vx.xx.x

9. 下載完成後開啟檔案〔MF Print Driver & Utilities for Macintosh VXXXXXX〕，按「MF_Printer_Installer.pkg」

Open the downloaded file〔MF Print Driver & Utilities for Macintosh VXXXXXX〕, press “MF_Printer_Installer.pkg”



10. 按「繼續」
Choose “Next”



11. 按「繼續」然後按「同意」
Choose “Next” and then choose “Agree”



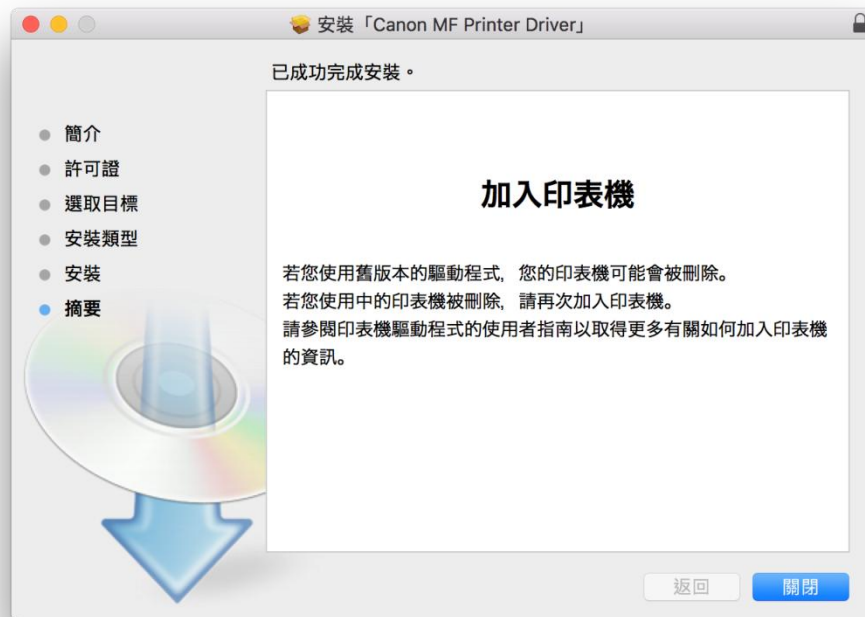
12. 按「安裝」
Choose "Install"



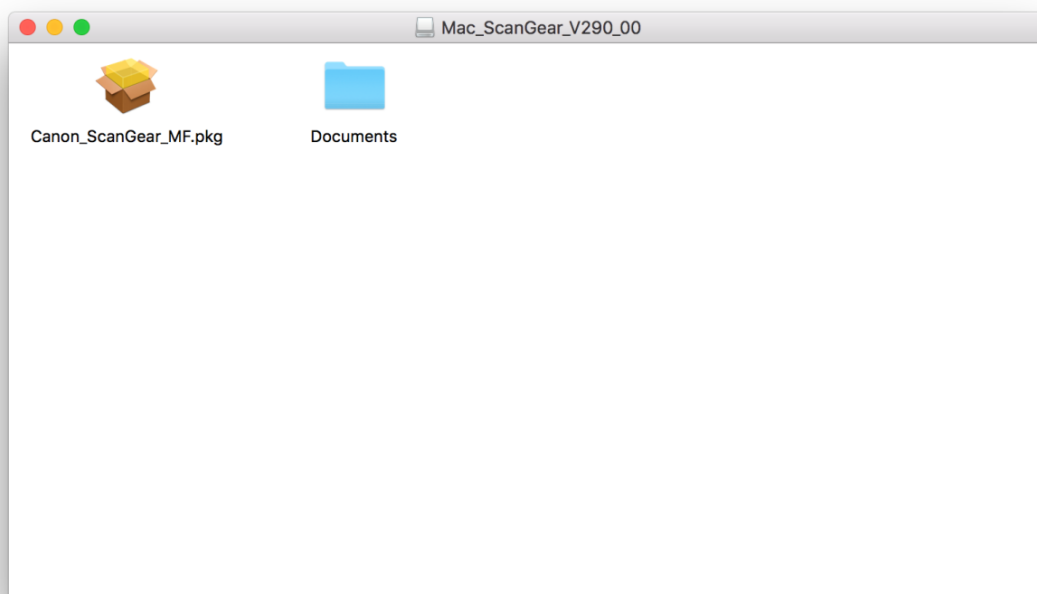
13. 等待安裝程序完成
Waiting for the installation progress



14. 按「關閉」
Choose “Close”



15. 開啟檔案 [Scanner Driver & Utilities V XXXXXX]，按「Canon_ScanGear_MF.pkg」
Open file [Scanner Driver & Utilities V XXXXXX]，press “Canon_ScanGear_MF.pkg”



16. 按「繼續」
Choose “Continue”



17. 按「繼續」然後按「同意」
Choose “Continue” and then choose “Agree”



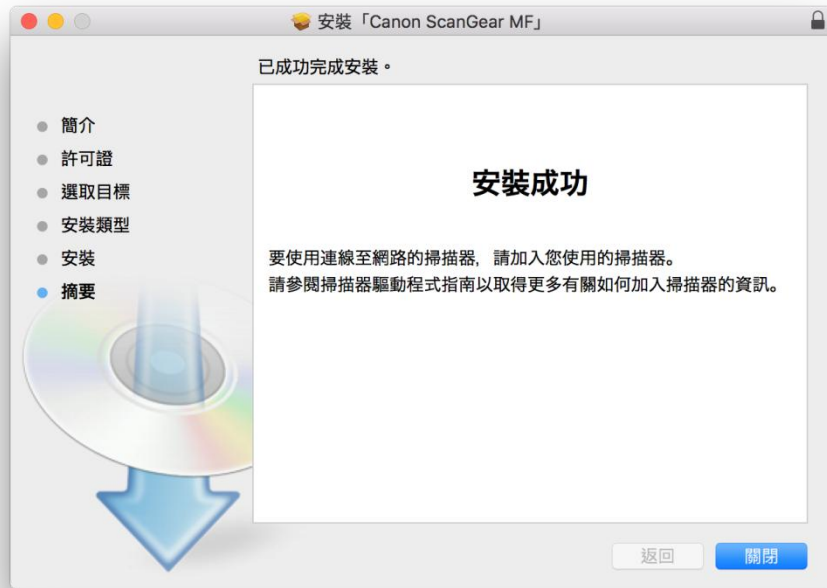
18. 按「安裝」
Choose "Install"



19. 等待完成安裝 程序
Wait for the installation progress



20. 按「關閉」
Choose “Close”



21. 完成安裝驅動程式後需新增印表機，到「系統偏好設定」，選「印表機與掃描器」
Go to “System Preferences” and open “Printer and Scanner”



22. 選取左下角「+」按鈕，選「加入印表機或掃描器」
Click the “+” button and select “Add printer or Scanner”



23. 名稱選擇「Canon MF633C/635C」，種類選擇「Bonjour 多功能」，使用選擇「Canon MF633C/635C series」按「加入」，新增印表機驅動程式
Choose the Name “Canon MF 633C/635C” with “Bonjour multifunction”, and confirm selected “Canon MF 633C/635C” in “Use”, then click “Add”



25. 選擇「Canon MF633C/635C」，按「新增」
Choose “Canon MF633C/635C” and then click “Add”



26. 完成以上設定後已可使用印表機作打印、傳真及掃描功能
Setup completed. Print, fax and scan functions are ready to use

-完-
-End-