





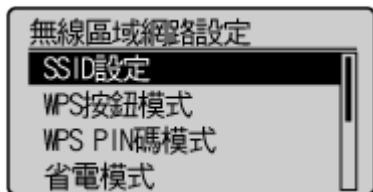


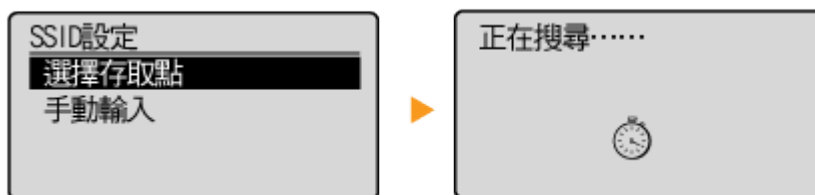
透過無線網路連接安裝 MF232w 印表機的驅動程式步驟 (以 Win 10 作示範)  
MF232w printer driver Installation Guide for Windows via Wi-Fi connection (Win 10 as example)

1. 開啟印表機，於印表機上點選「功能表」  
Turn on printer, press “Menu”  on printer
2. 使用 ▲/▼ 按鈕選擇「網絡設定」，然後按   
Use ▲/▼ buttons to select “Network Settings”, and press 
3. 選擇「無線區域網路設定」，然後按  (如顯示「是否啟用無線區域網路？」，點選「是」)  
Select “Wireless LAN Settings”, and press  (If the “Do you want to enable the wireless LAN?” message is displayed, tap “Yes”)

4. 閱讀顯示的訊息，然後按   
Read the message that is displayed, and press 
5. 選擇「SSID 設定」，然後按   
Select “SSID Settings”, and press 



6. 選擇「選擇存取點」，然後按   
Select “Select Access Point”, and press 



7. 選擇無線網路名稱，然後按   
Select a wireless network name, and press 



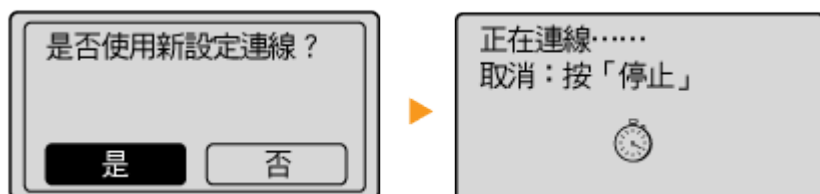
8. 使用數字鍵輸入 Wi-Fi 密碼，選擇「套用」，然後按 **OK**

Enter the Wi-Fi password using the numeric keys, select "Apply", and press **OK**



9. 選擇「是」，然後按 **OK**

Select "Yes", and press **OK**

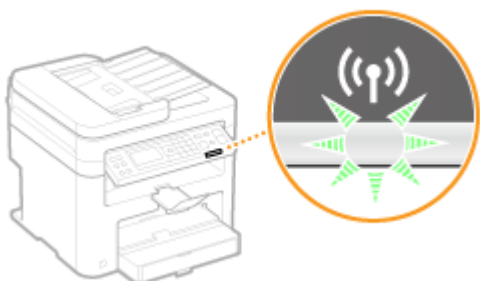


10. 檢查控制面板上的 Wi-Fi 指示燈是否閃爍

當偵測到無線網路，Wi-Fi 指示燈會閃爍

Check that the Wi-Fi indicator is blinking on the operation panel

The Wi-Fi indicator blinks when a wireless network is detected



當設定完成，會顯示以下畫面，約 2 秒後 Wi-Fi 指示燈會亮起

When the setup is completed, the screen below is displayed, and approximately 2 seconds later, the Wi-Fi indicator lights up



到佳能網站 <https://hk.canon/en/support/imageCLASS%20MF232w/model>

下載印表機的驅動程式 - MF237w/MF232w MFDivers (UFR II / FAX / ScanGear)

Go to: <https://hk.canon/en/support/imageCLASS%20MF232w/model>

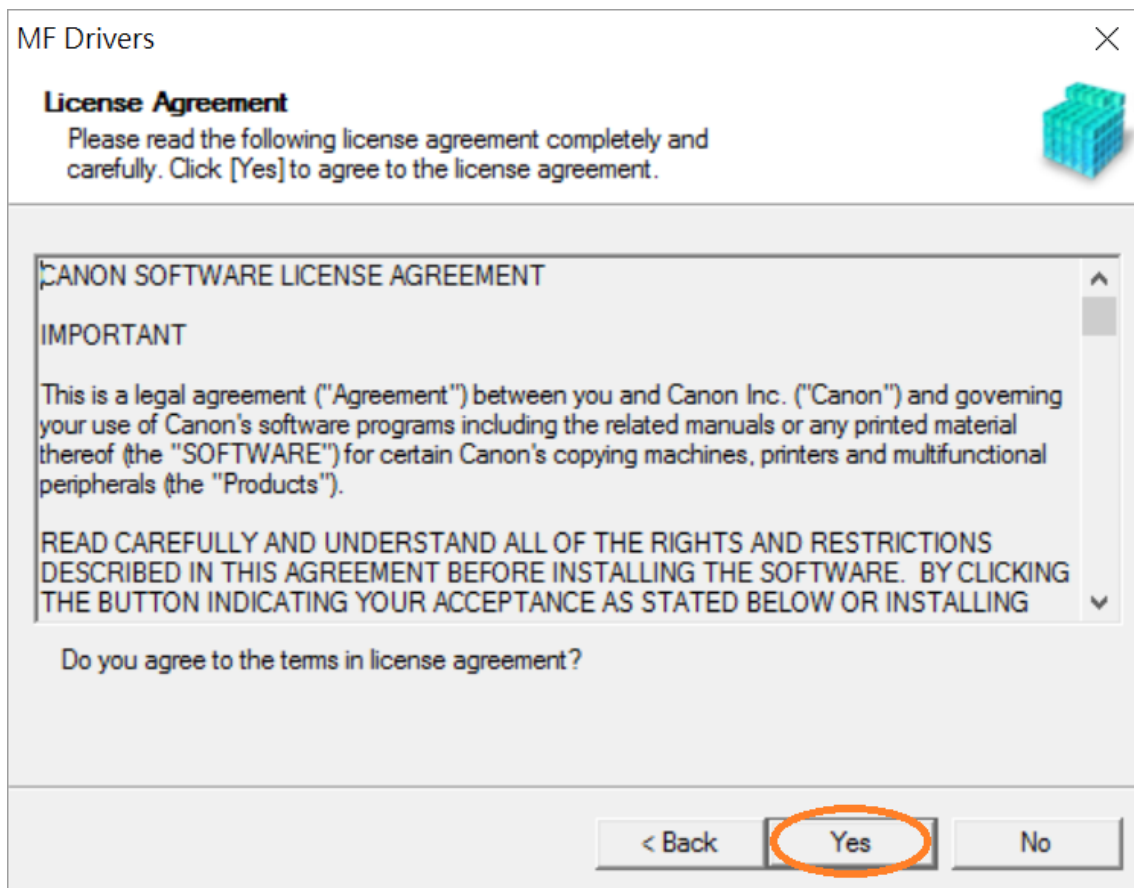
Download the printer driver - MF237w/MF232w MFDivers (UFR II / FAX / ScanGear)

11. 下載完成後，打開驅動程式 安裝檔案  
Open driver installation file after downloaded

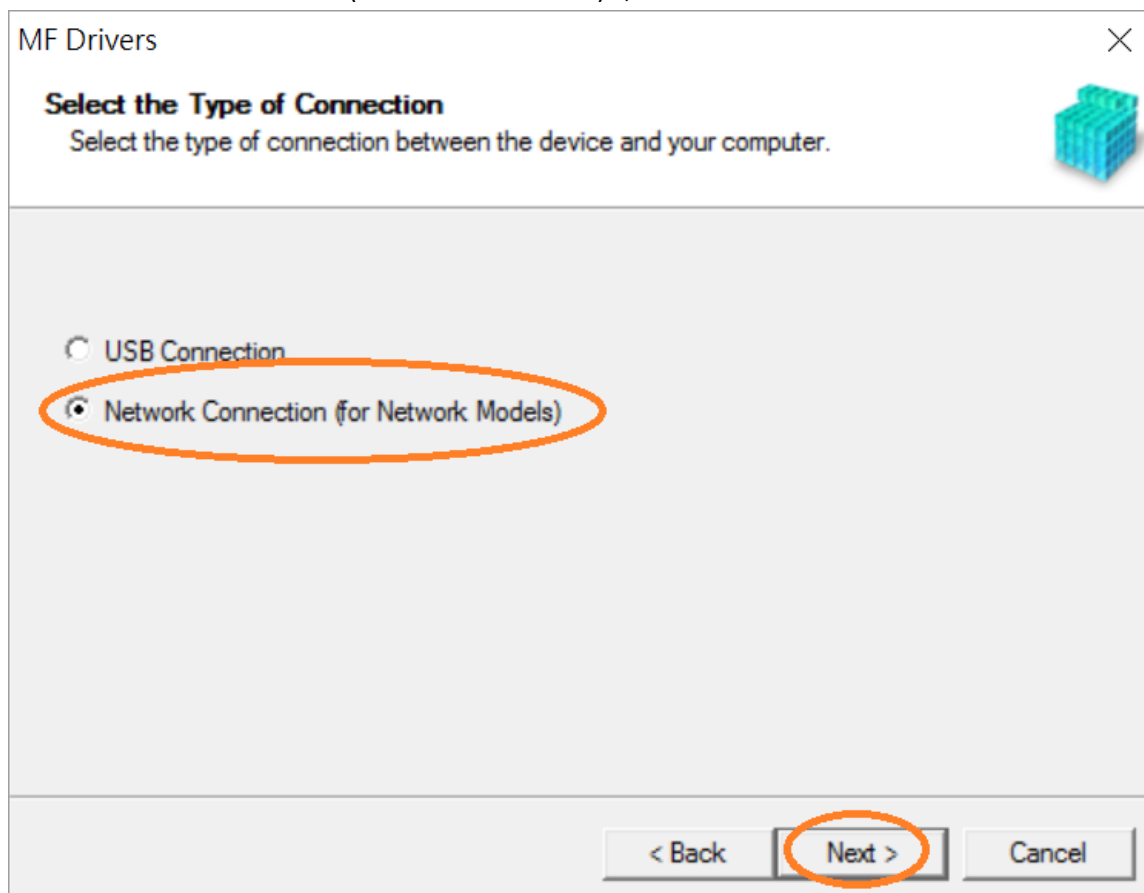
12. 按「Next >」  
Click "Next >"



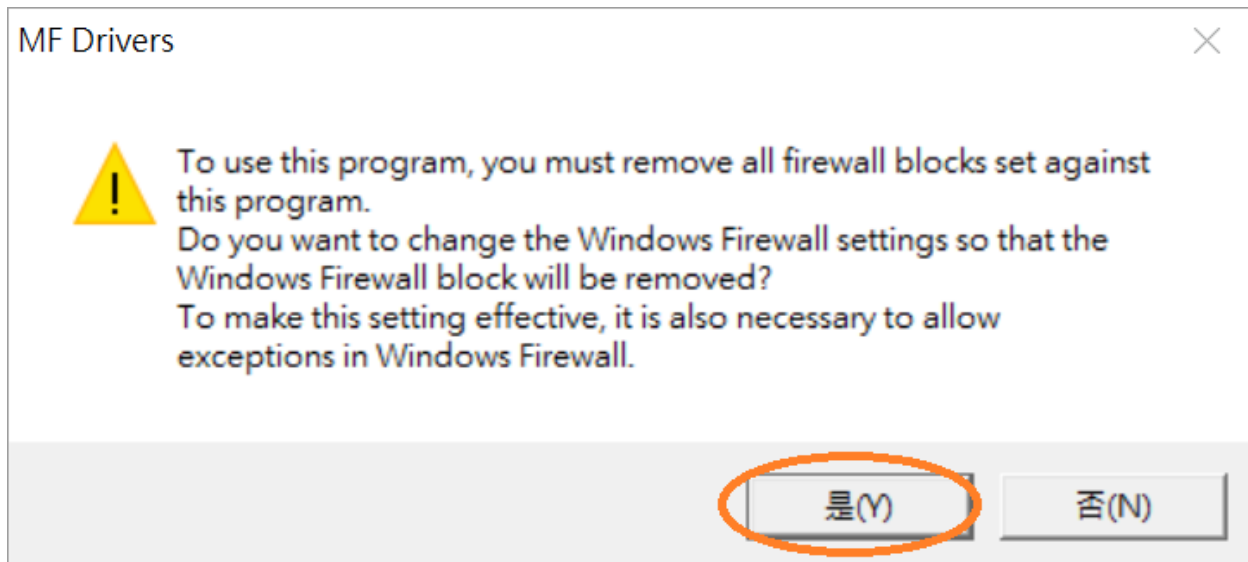
13. 按「Yes」  
Click "Yes"



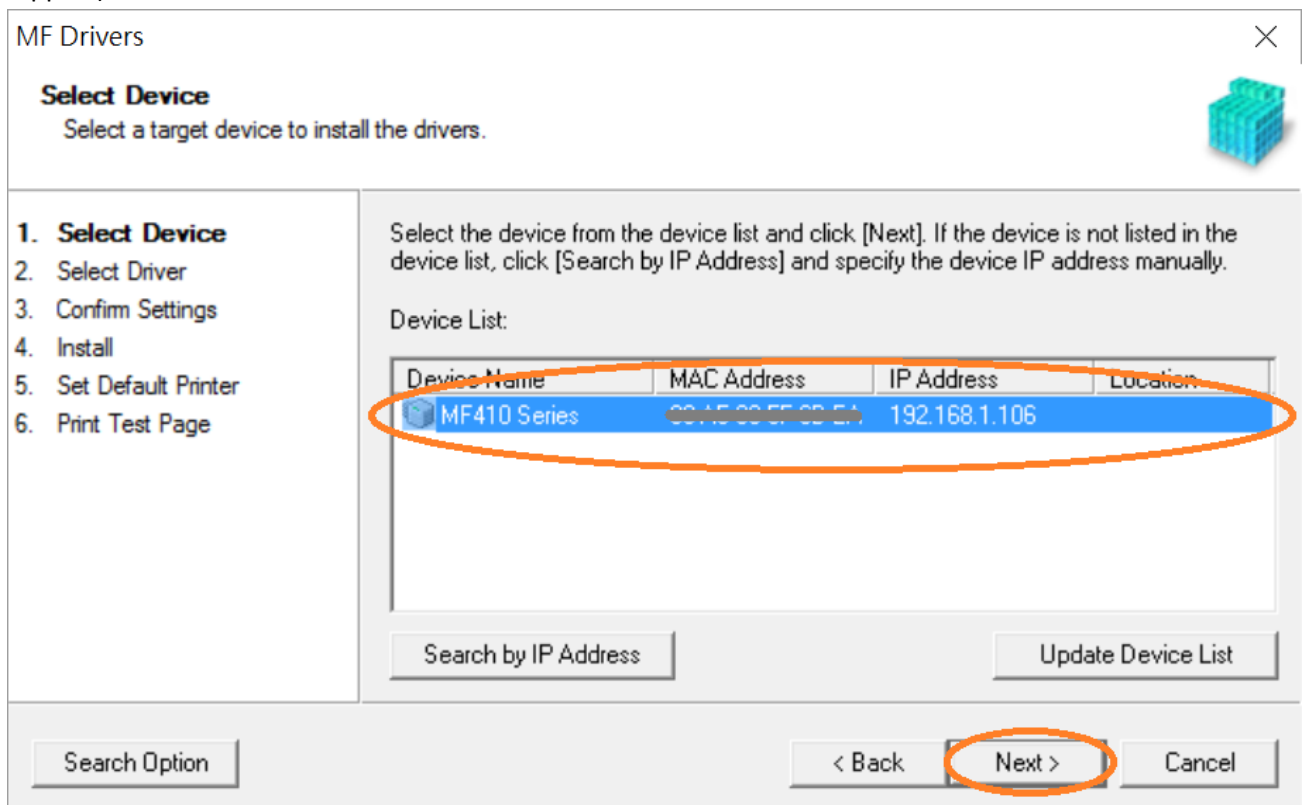
14. 選擇「Network Connection (for Network Models)」，按「Next >」  
Select "Network Connection (for Network Models)", click "Next >"



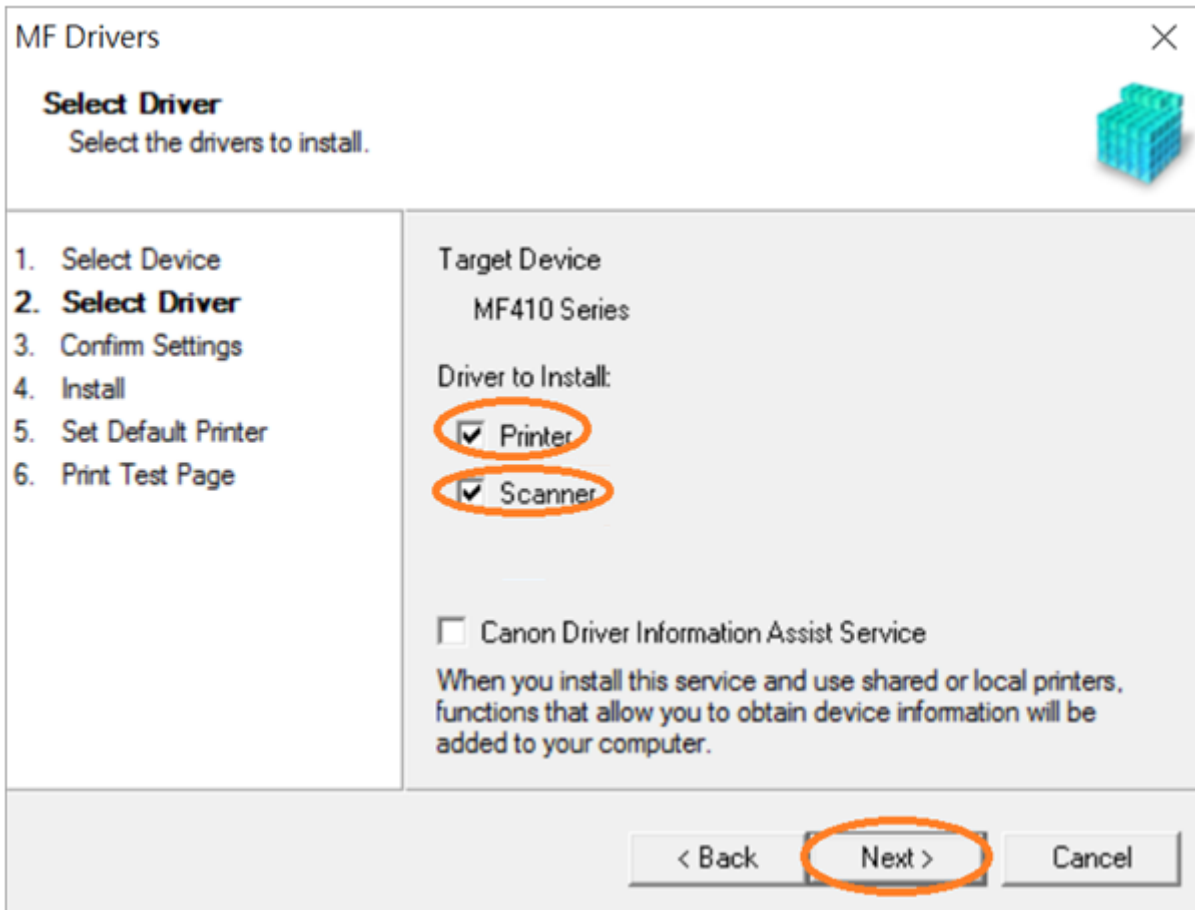
15. 按「是」  
Click "Yes"



16. 選擇「MF230 Series」（以 MF410 Series 為例子），按「Next >」（如清單沒有印表機，請選「Search by IP Address」方法連接或聯絡客戶服務熱線 31912333 尋求支援）  
Select "MF230 Series" (MF410 Series as example), click "Next >" (If there is no printer on the list, please select "Search by IP Address" method to connect or contact customer service hotline 31912333 to seek for support)



17. 確認已剔選「Printer」「Scanner」（以 MF410 Series 為例子），按「Next >」  
Confirm the “Printer” “Scanner” box is checked(MF410 Series as example), click “Next >”



MF Drivers

**Select Driver**  
Select the drivers to install.

1. Select Device  
2. **Select Driver**  
3. Confirm Settings  
4. Install  
5. Set Default Printer  
6. Print Test Page

Target Device  
MF410 Series

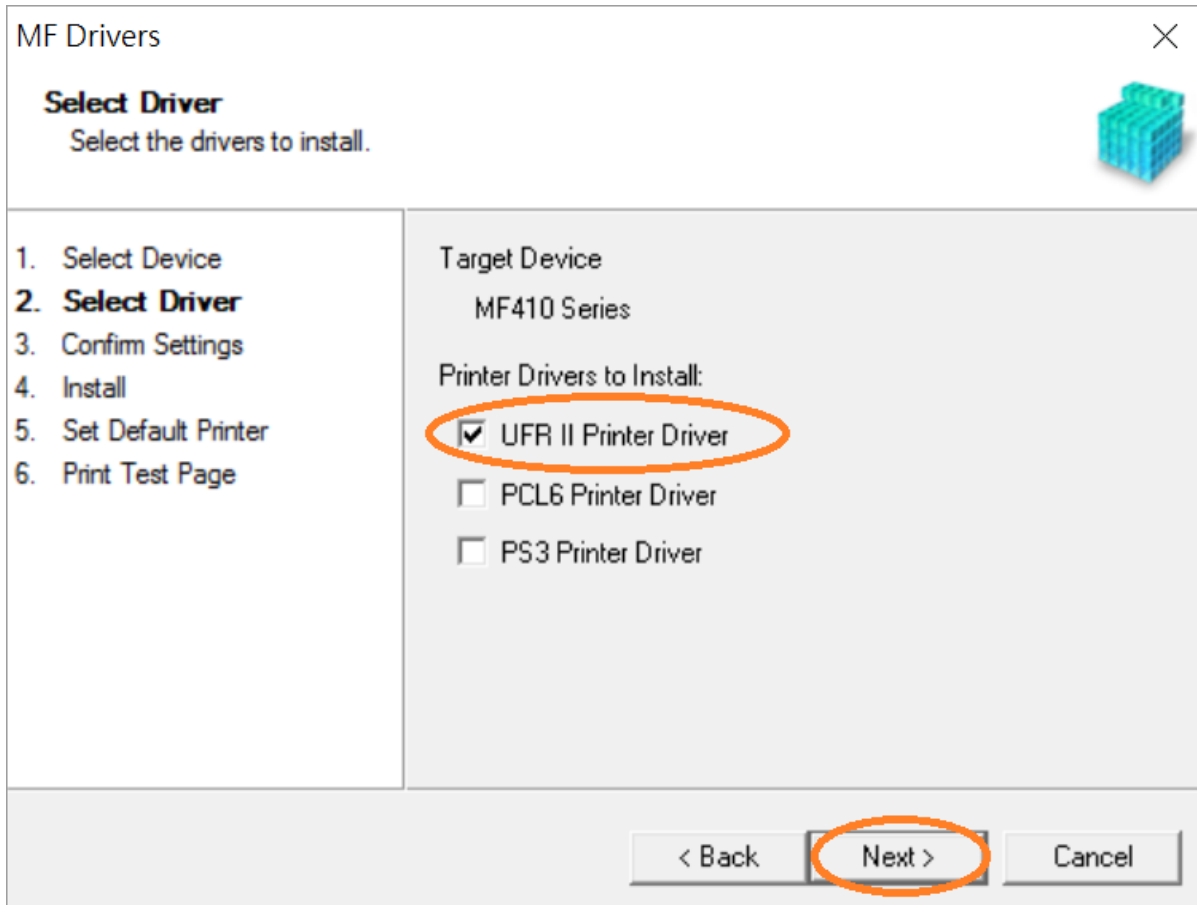
Driver to Install:

Printer  
 Scanner

Canon Driver Information Assist Service  
When you install this service and use shared or local printers, functions that allow you to obtain device information will be added to your computer.

< Back **Next >** Cancel

18. 選擇「UFR II Printer Driver」（以 MF410 Series 為例子），按「Next >」  
Select “UFR II Printer Driver” (MF410 Series as example), click “Next >”



MF Drivers

**Select Driver**  
Select the drivers to install.

1. Select Device  
2. **Select Driver**  
3. Confirm Settings  
4. Install  
5. Set Default Printer  
6. Print Test Page

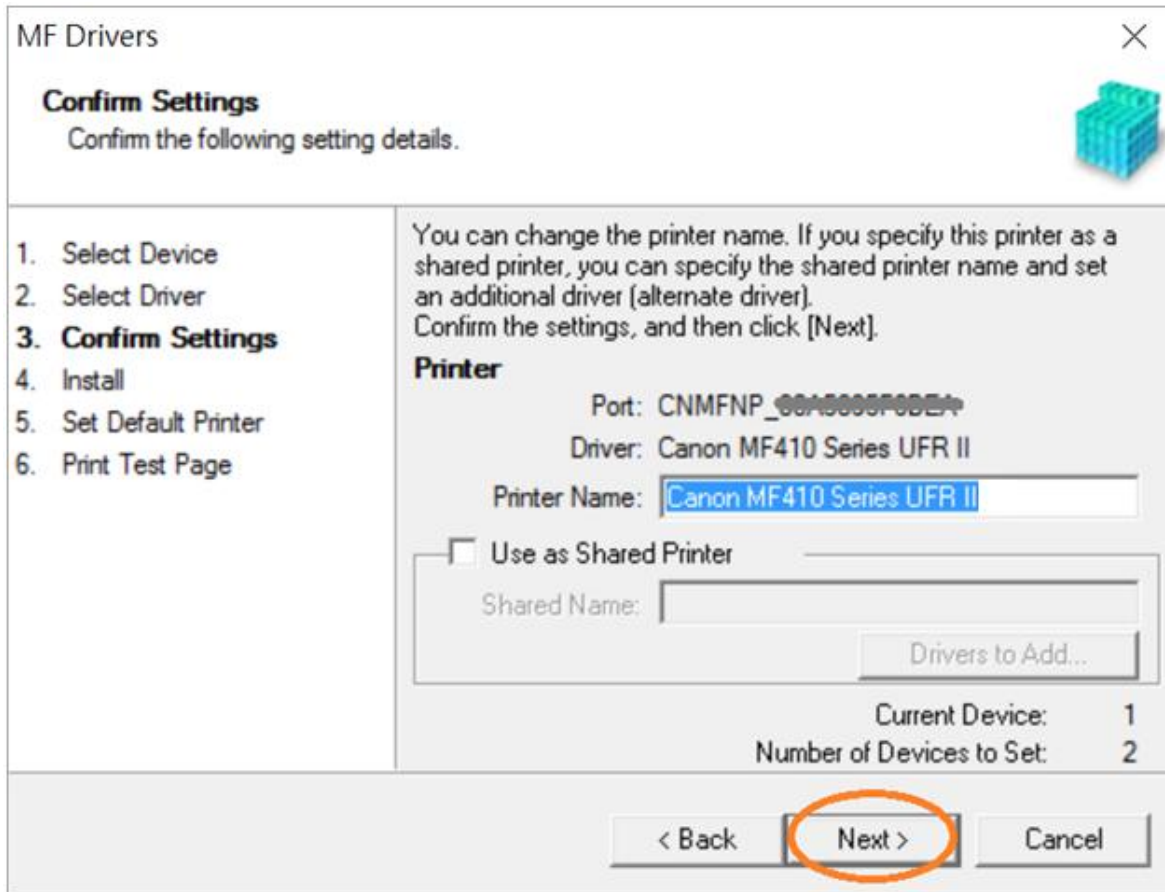
Target Device  
MF410 Series

Printer Drivers to Install:

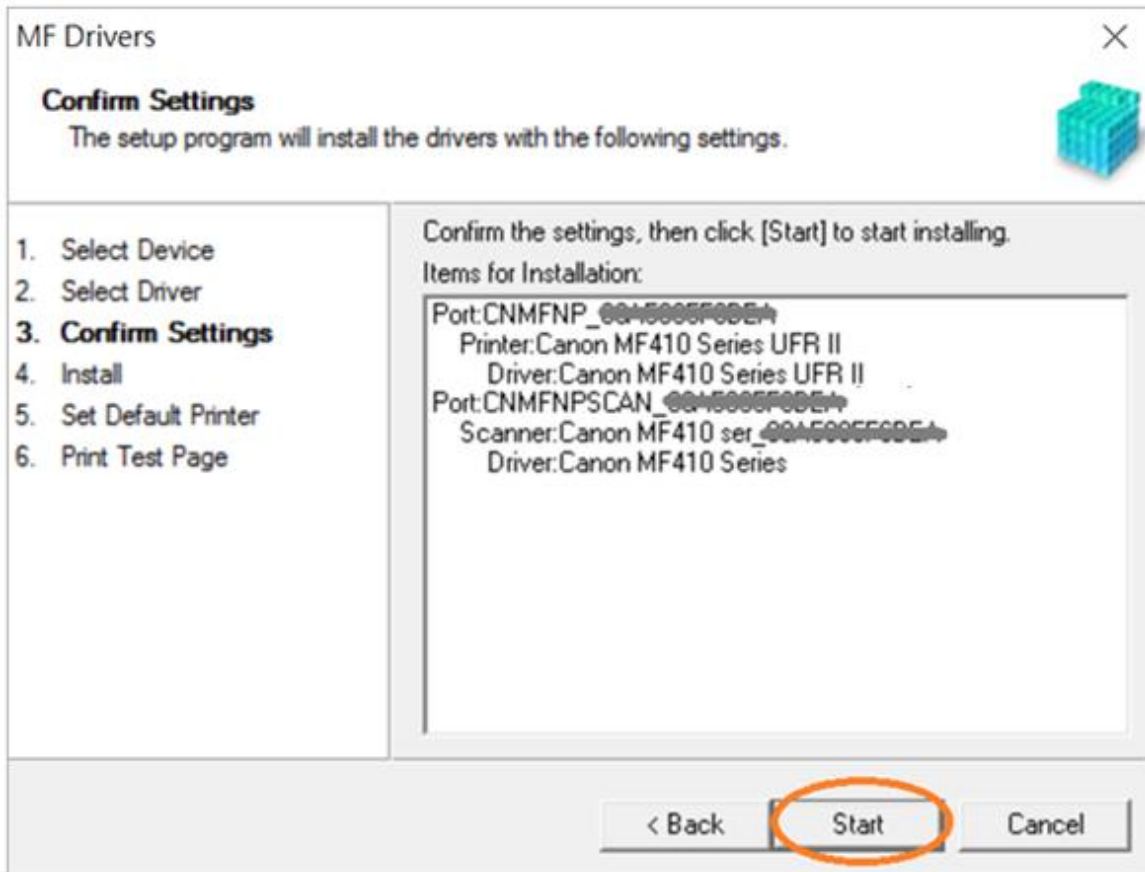
UFR II Printer Driver  
 PCL6 Printer Driver  
 PS3 Printer Driver

< Back **Next >** Cancel

19. 按「Next >」(以 MF410 Series 為例子)  
Click "Next >"(MF410 Series as example)

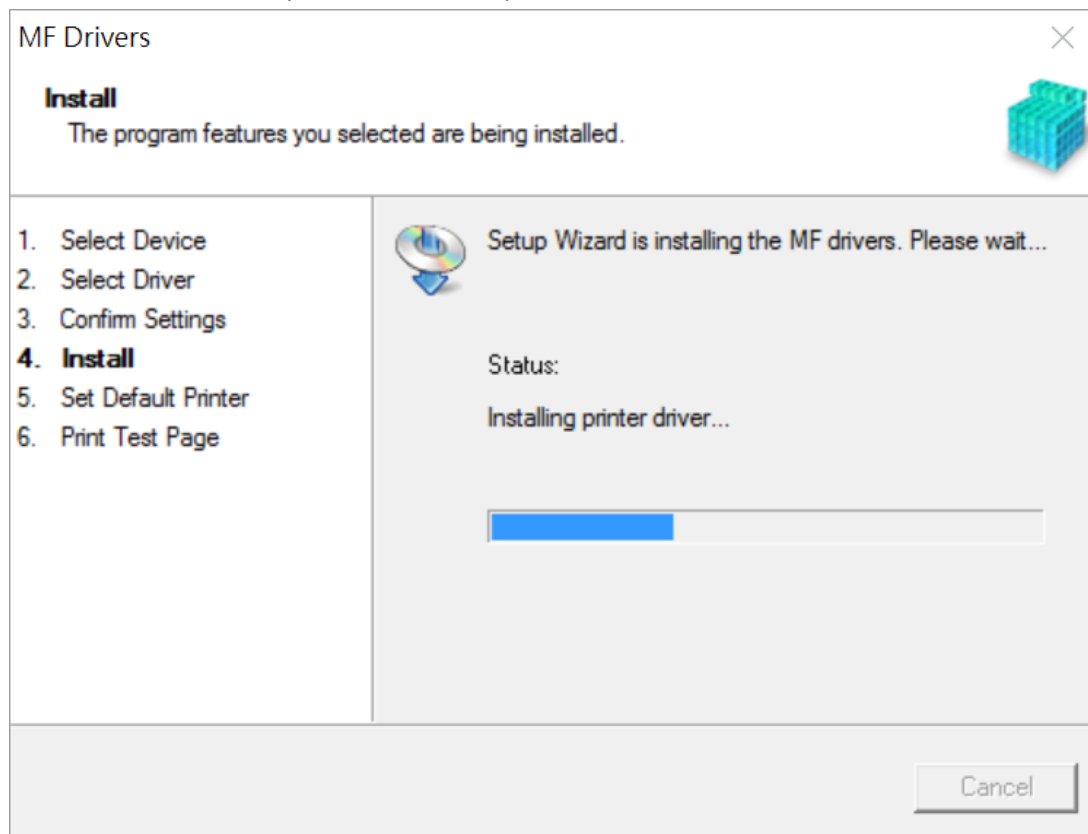


20. 按「Start」(以 MF410 Series 為例子)  
Click "Start>" (MF410 Series as example)

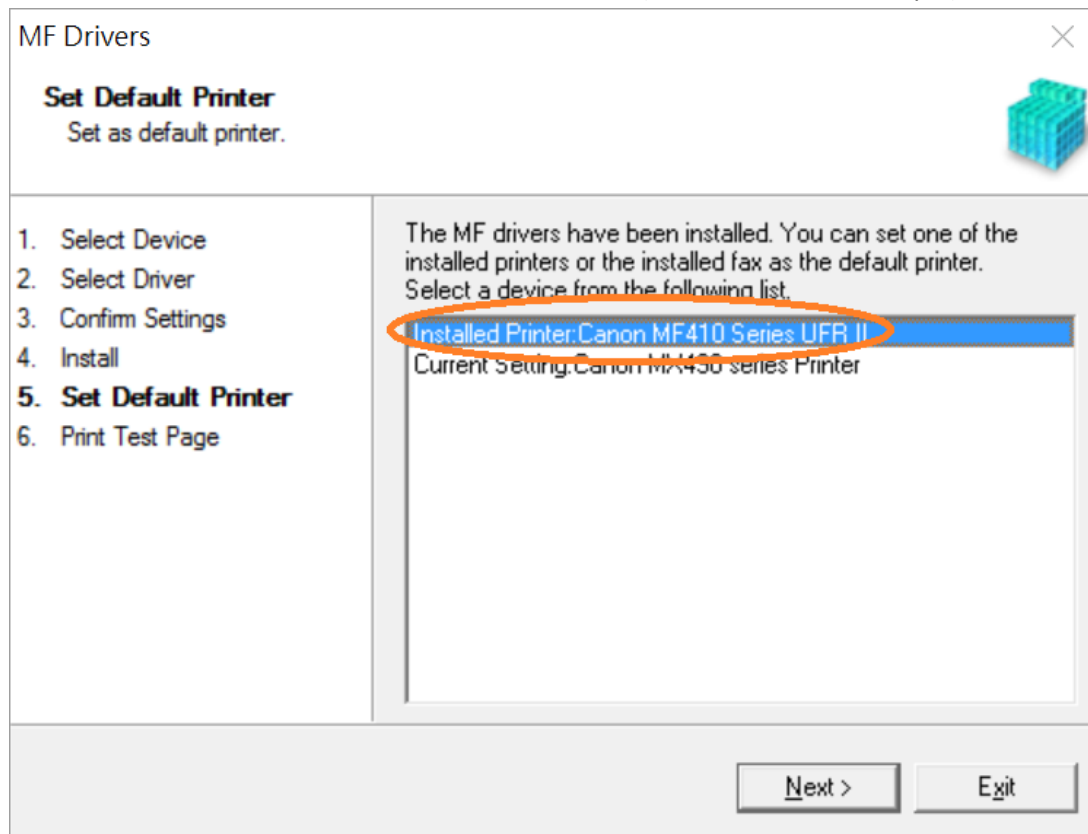


21. 請等待安裝精靈成完安裝

Please wait for the setup wizard to accomplish installation

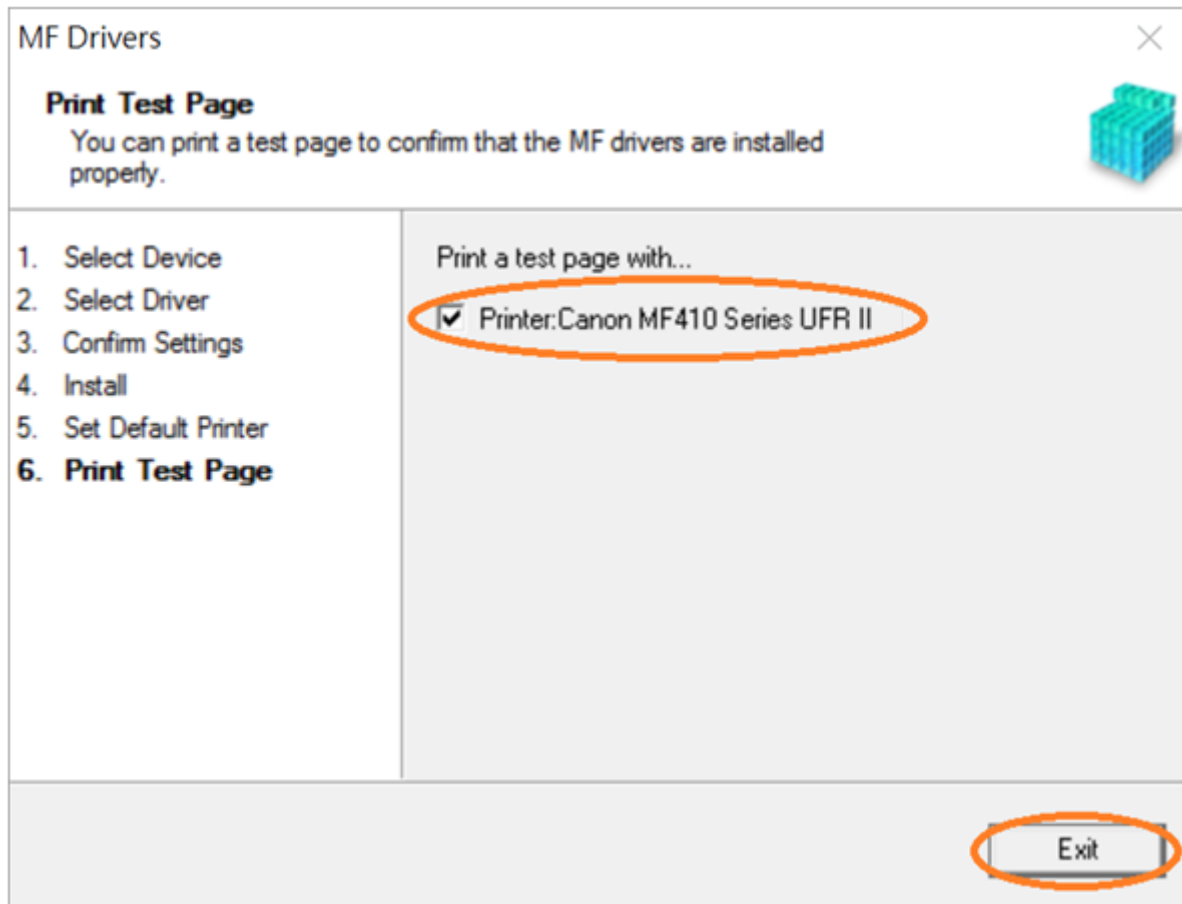


22. 選擇「Installed Printer: Canon MF230 Series UFR II」（以 MF410 Series 為例子），按「Next >」  
Select "Installed Printer: Canon MF230 Series UFR II" (MF410 Series as example), click "Next >"



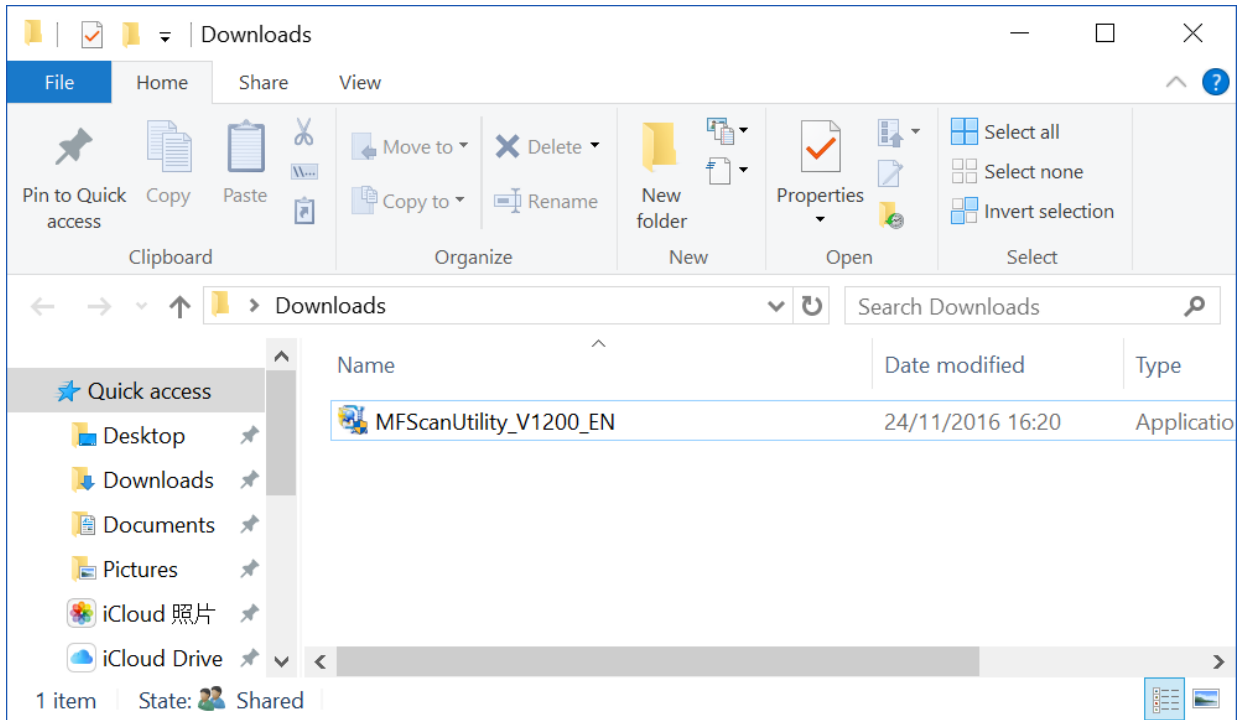


23. 可剔選「Printer: Canon MF 230 Series UFR II」以（MF410 Series 為例子）進行列印測試頁，按「Exit」  
Can check the box at “Printer: Canon MF230 Series UFR II” (MF410 Series as example) to print a test page, click “Exit”

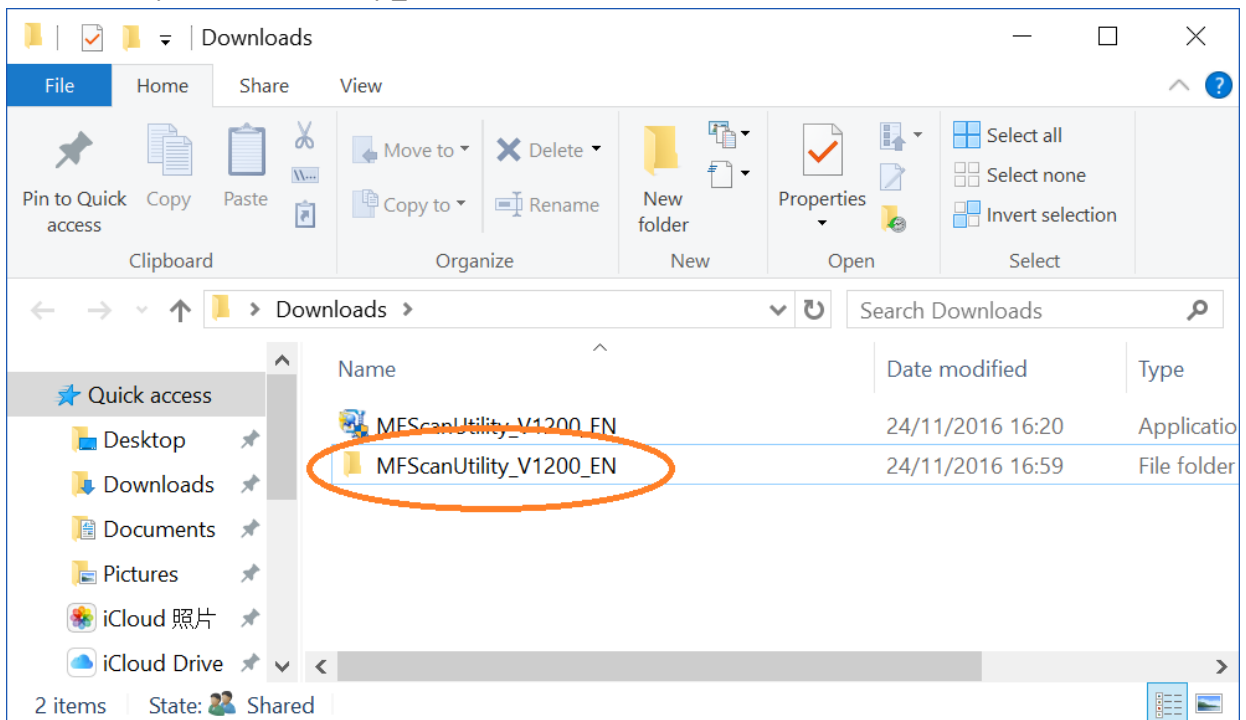


24. 到佳能網站 <https://hk.canon/en/support/imageCLASS%20MF232w/model>  
下載印表機的掃描軟件 - MF Scan Utility Ver.x.x.x.x  
Go to: <https://hk.canon/en/support/imageCLASS%20MF232w/model>  
Download the printer scanning software- MF Scan Utility Ver.x.x.x.x

25. 下載的文件以自解壓縮檔檔案（.exe 格式）保存在指定的文件夾中  
The self extractor file (.exe format) is saved to specified folder

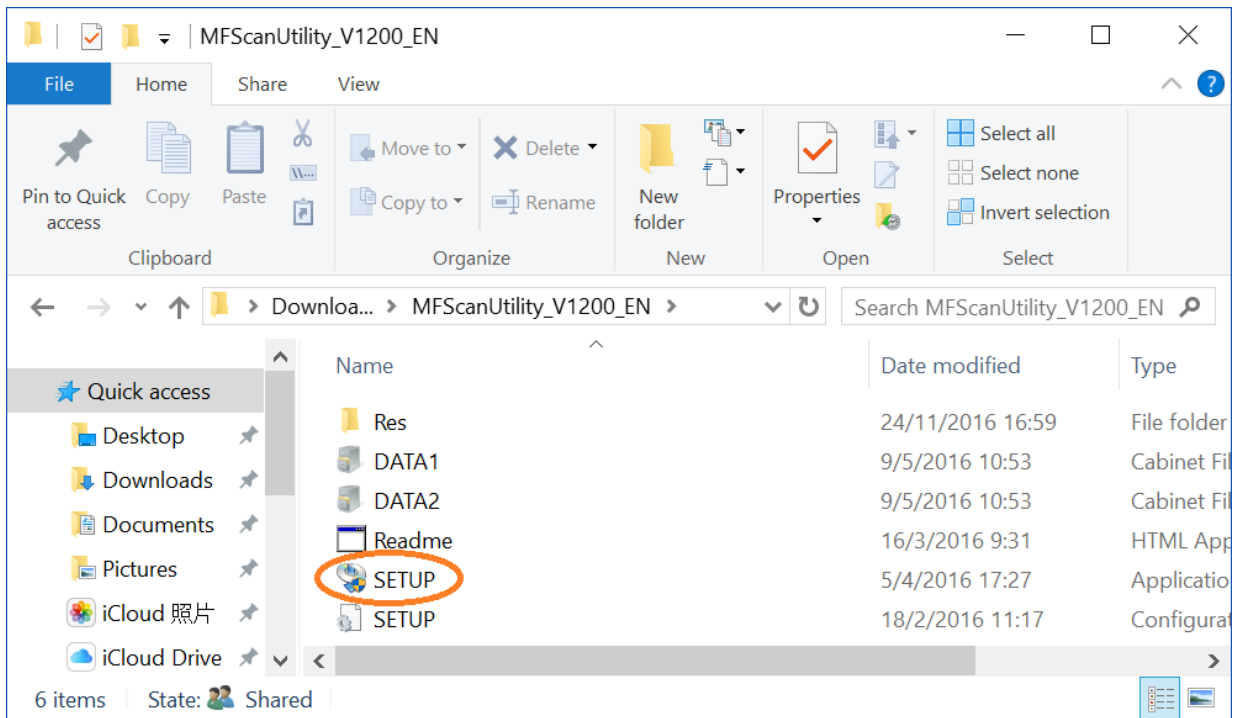


26. 打開「MFScanUtility\_\*\*\*.exe」檔案。將在同一文件夾中創建新文件夾，如打開文件解壓縮時出現「使用者帳戶控制」選項，按「是」，打開「MFScanUtility\_\*\*\*」文件夾  
Open "MFScanUtility\_\*\*\*.exe" file, a new folder will be created. If "User Account Control" window pop-up, click "Yes", open "MFScanUtility\_\*\*\*" file folder



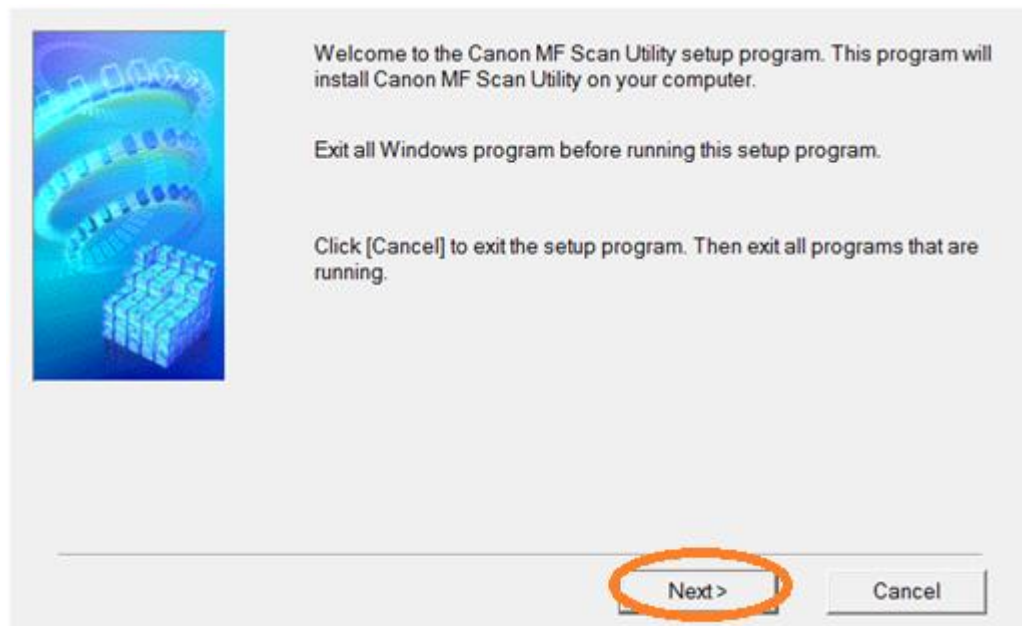
27. 開啓「SETUP.exe」檔案

Open "SETUP.exe" file

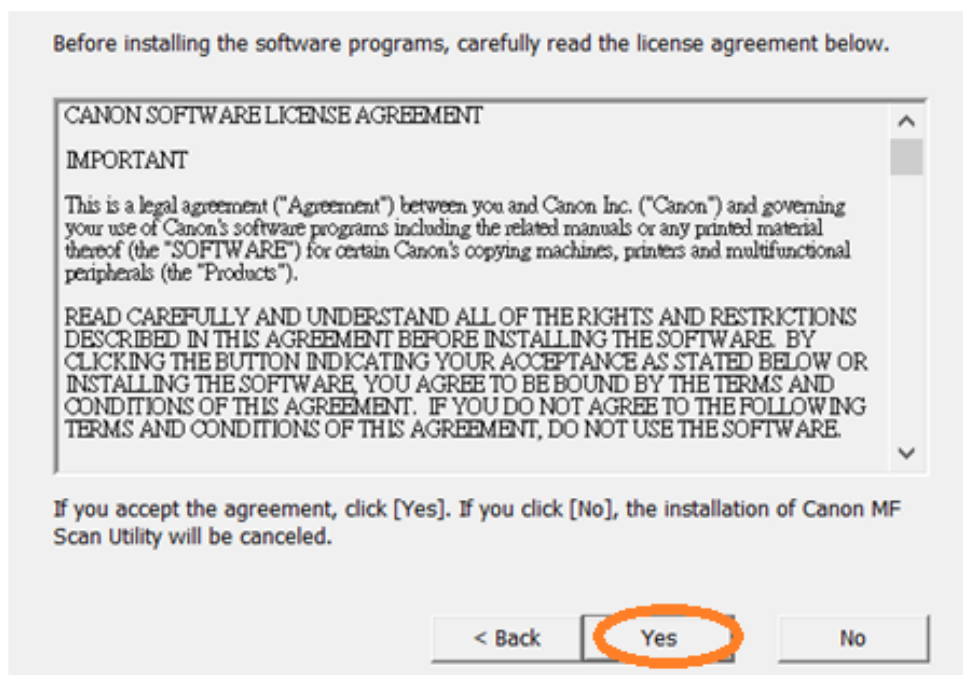


28. 按「Next >」

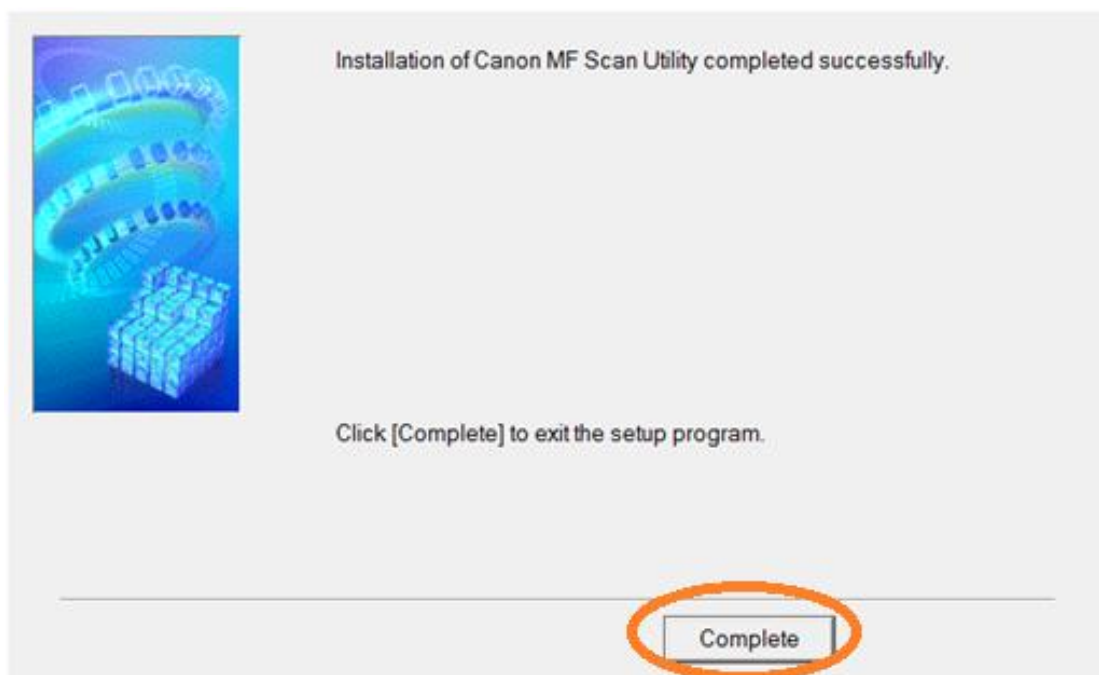
Click "Next >"



29. 按「Yes」  
Click “Yes”



30. 按「Complete」  
Click “Complete”



-完-  
-End-