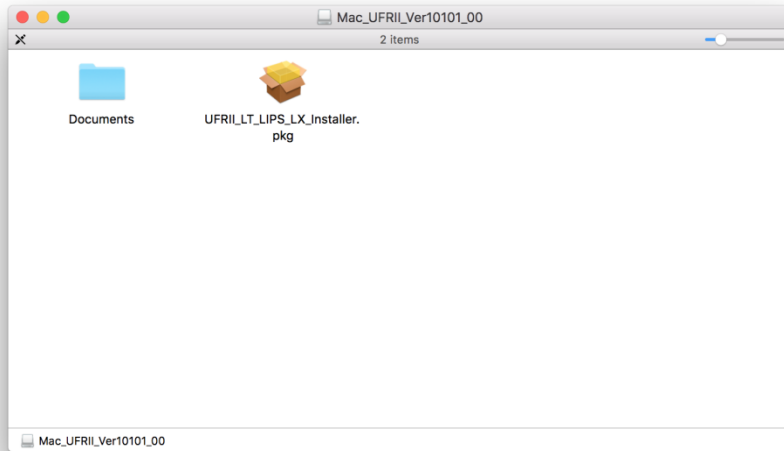
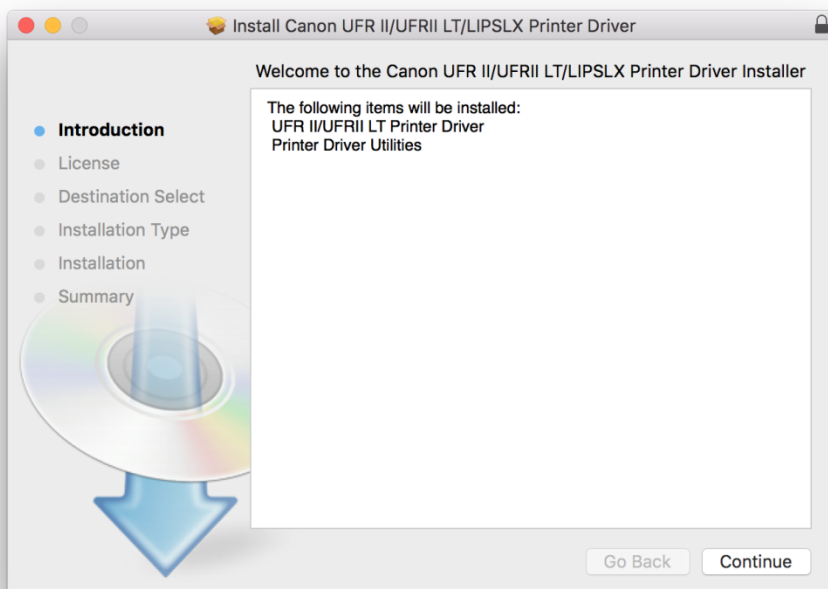


在 MAC OSX 以 LAN 接駁安裝 LBP841Cdn 驅動程式步驟（以 OSX 10.11 作示範）
LBP841Cdn printer driver Installation Guide for MAC OSX via LAN (OSX 10.11 as example)

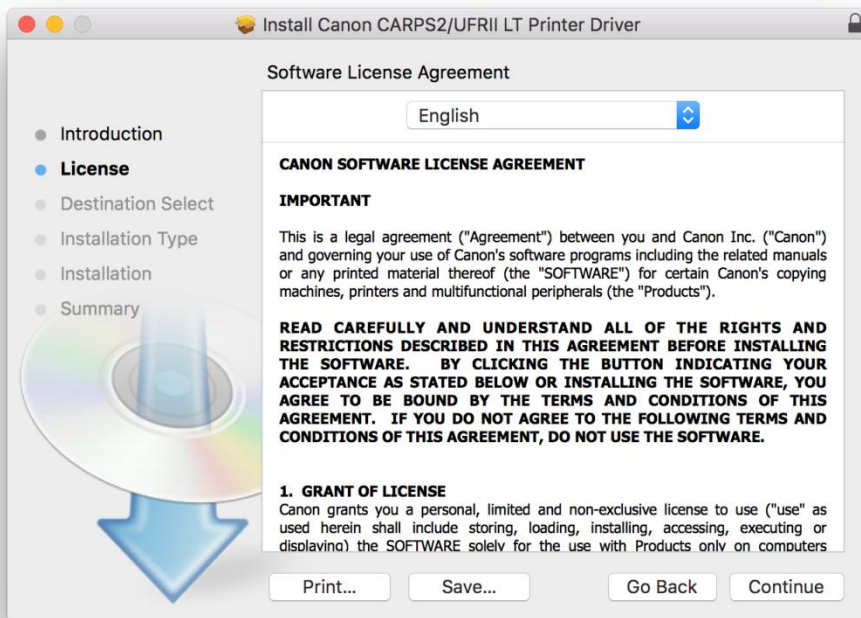
1. 到佳能網站 <https://hk.canon/en/support/imageCLASS%20LBP841Cdn/model>
下載印表機的驅動程式 - UFR II/UFR II LT Printer Driver & Utilities for Macintosh
Go to: <https://hk.canon/en/support/imageCLASS%20LBP841Cdn/model>
Download the printer driver - UFR II/UFR II LT Printer Driver & Utilities for Macintosh
2. 開啟下載檔案「Mac_UFR II_***」，然後開啟“UFR II_LT_***.pkg”文件開始安裝設定
Open “Mac_UFR II_***”, and then Open “UFR II_LT_***.pkg” to start the driver installation



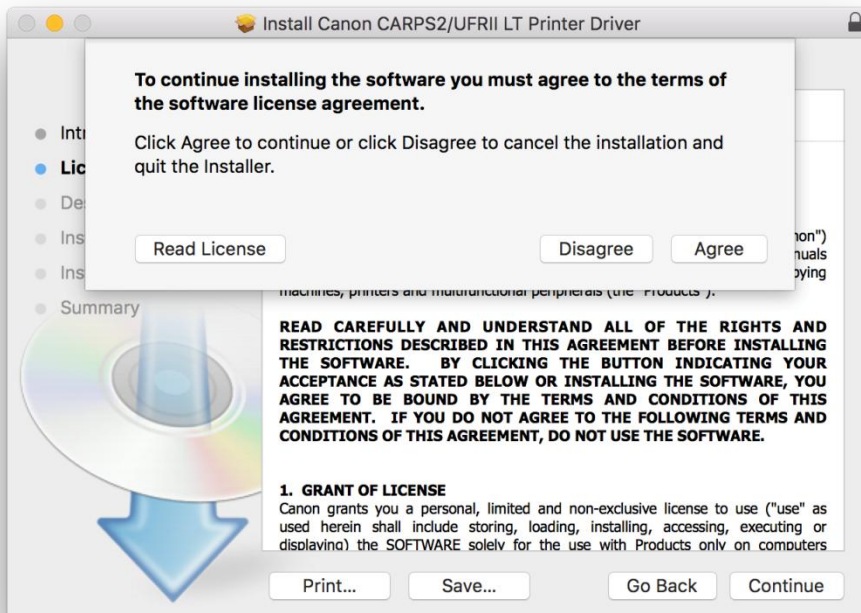
3. 按「Continue」
Click “Continue”



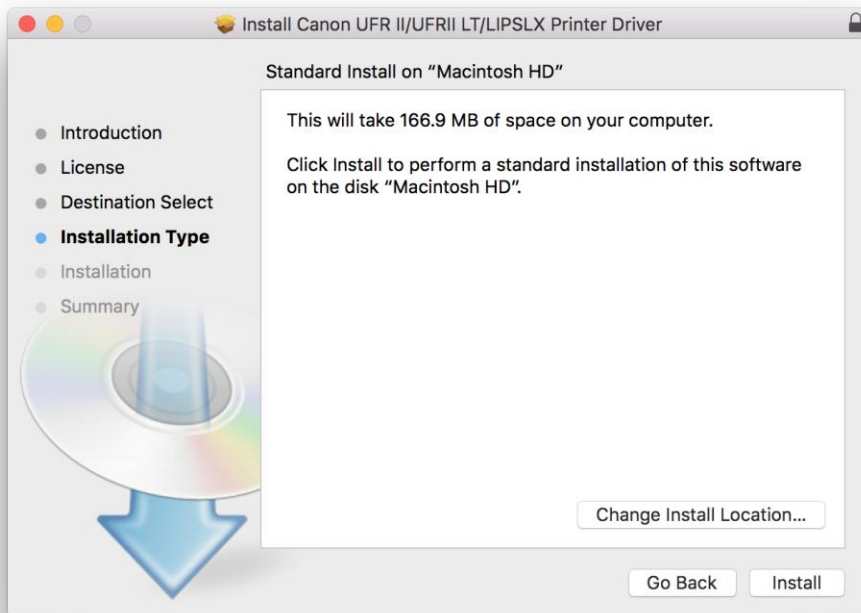
4. 按「Continue」
Click “Continue”



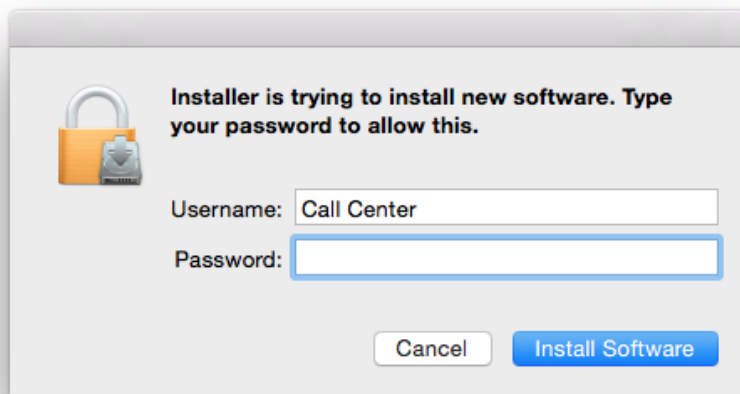
5. 按「Agree」
Click “Agree”



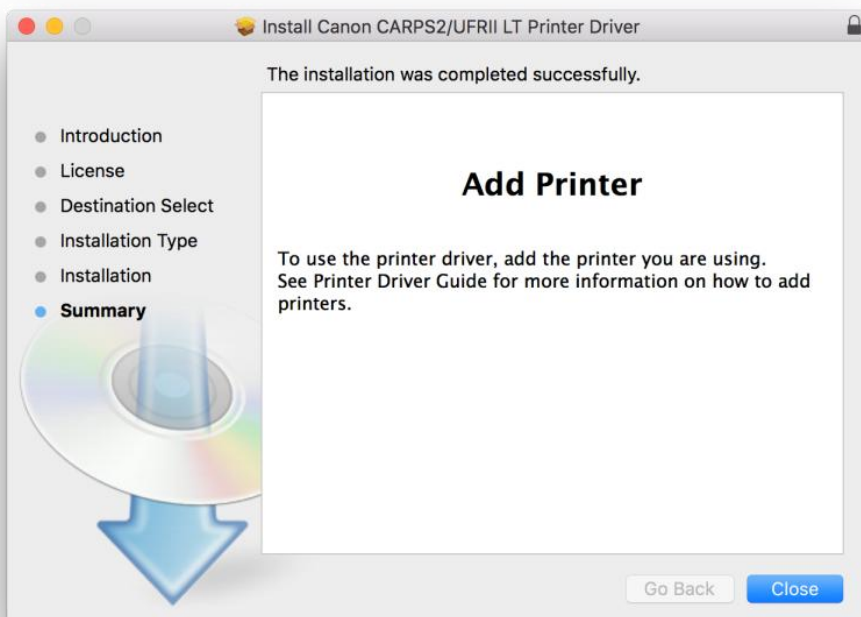
6. 按「Install」
Click “Install”



7. 輸入登入名稱及密碼（如出現以下畫面），然後按「安裝軟體」
Enter the login username and password (If this screen is shown below), and then click “Install Software”



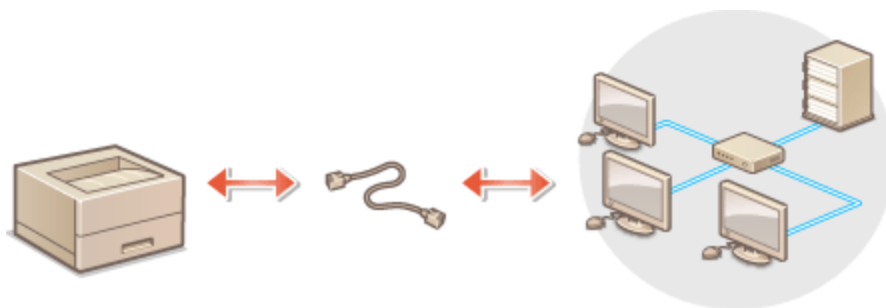
8. 按「Close」
Click “Close”



****完成安裝驅動程式後，請於印表機上設定連接到網絡**

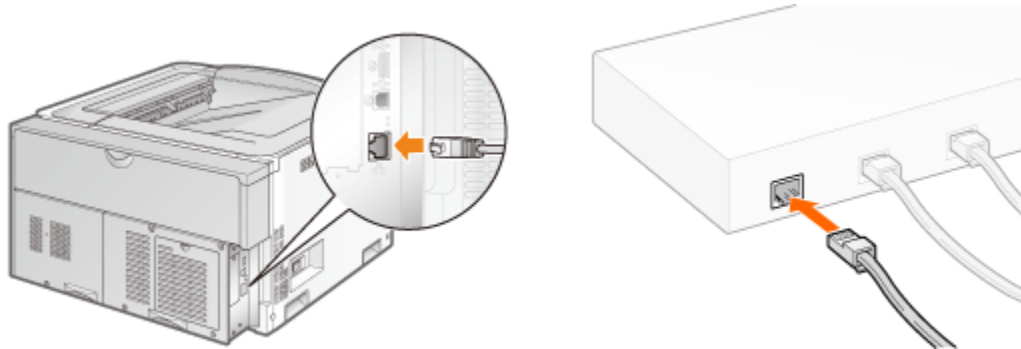
****After finished the driver installation, please connect the printer to a wireless network**

9. 將本機透過路由器連接到電腦，使用區域網路纜線將本機連接到路由器
Connect the machine to a computer via a router; use a LAN cable to connect the machine to the router



10. 使用區域網路纜線將本機連接到路由器，推入接頭，直至聽到喀嗒聲，開啟印表機


Connect the machine to a router by using a LAN cable, push the connector in until it clicks into place, and then turn on the printer




等待約 2 分鐘，等待時，會自動設定 IP 位址

Wait approximately 2 minutes, while you wait, the IP address is set automatically


11. 開啟印表機，於印表機上，按「功能表」

Turn on printer, and then click <Menu  > on printer


12. 使用 ▲/▼ 選擇「網路設定」，然後按「OK」

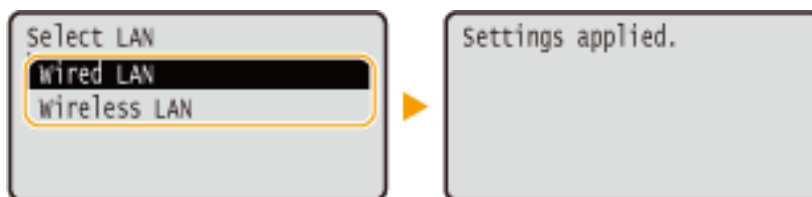
Use ▲/▼ to select <Network Settings>, and then click < >


13. 選擇「有線/無線區域網路」，然後按「OK」

Select <Network Settings>, and then click < >

14. 選擇「有線區域網路」，然後按「OK」

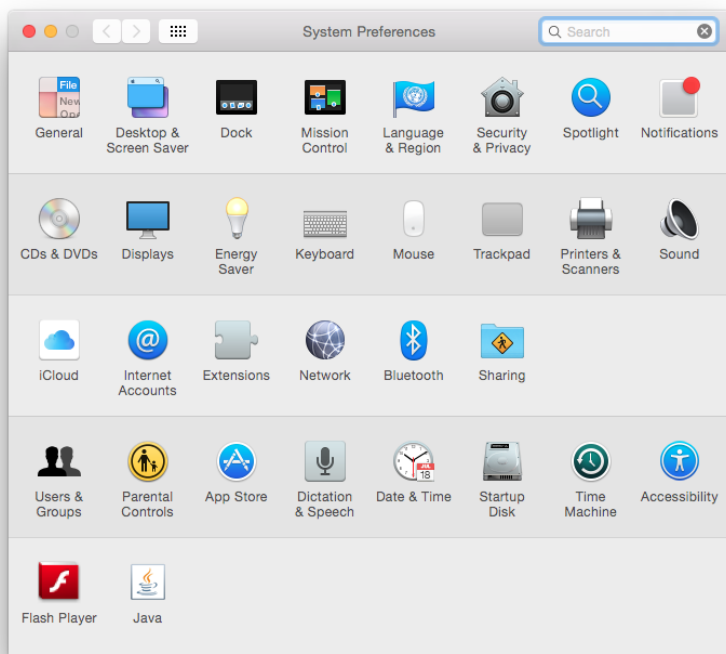
Select <Wired LAN>, and then click < >



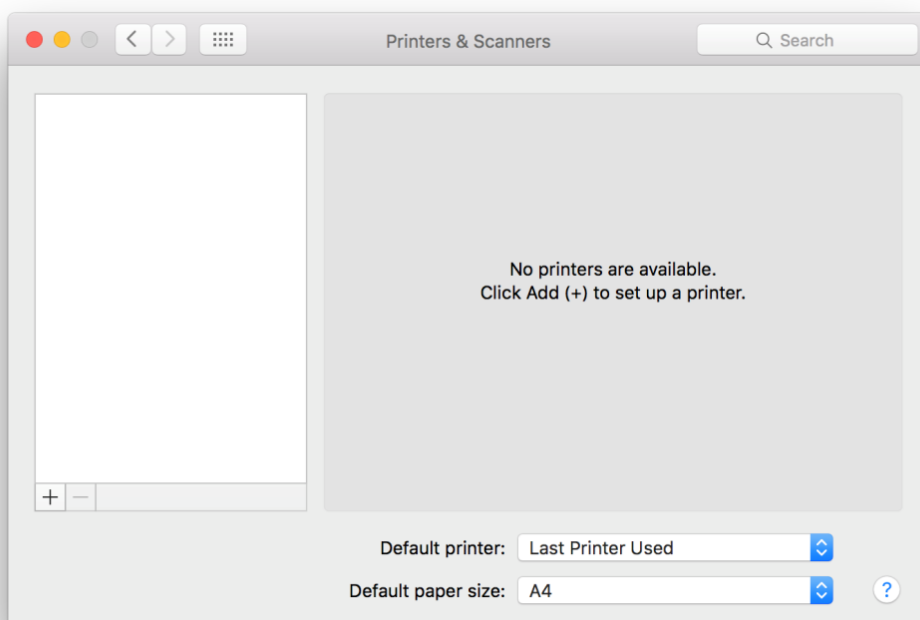
15. 按「功能表」

Click <Menu  >

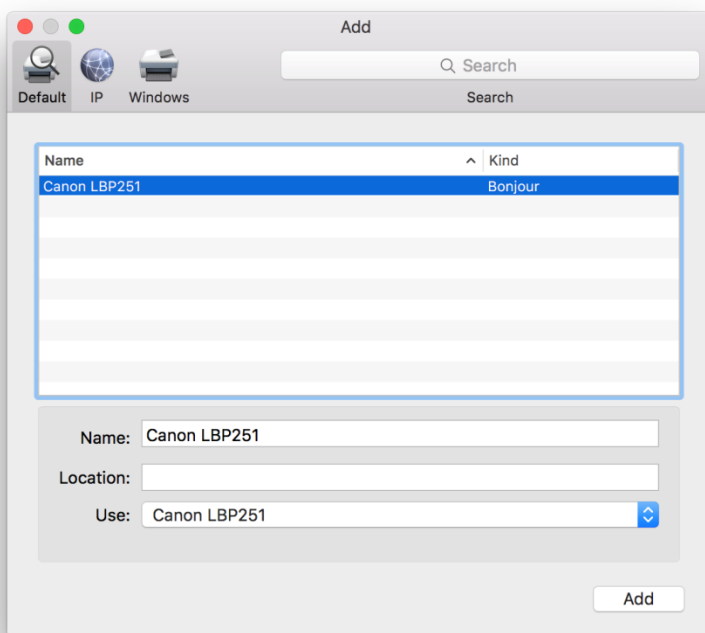
16. 完成印表機上的網絡設後，按一下電腦左上角<  > 圖案，選擇<系統偏好設定>，再選擇<印表機和掃描器>
- After finished the network setup in the printer, please click the top left corner of the computer <  > icon, click <System Preferences>, and then click <Printers and Scanners>



17. 於〔印表機和掃描器 (Printers& Scanners)〕視窗，按一下「+」按鈕加入印表機
- In the [Printers & Scanners] window, and then click the "+" button to register the printer



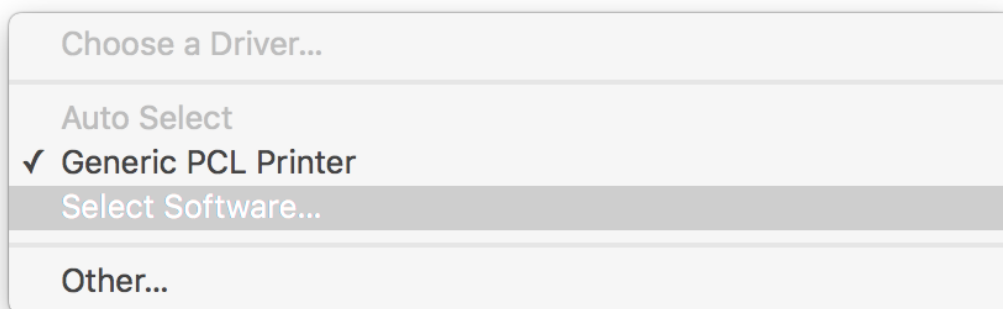
18. 名稱選擇「Canon LBP841C」，種類「Bonjour」，確認「使用（Use）」為「Canon LBP841C」（下圖以 LBP251 為例子），然後按「加入（Add）」
Choose “Name” as “Canon LBP841C”, confirm “Kind” as “Bonjour” and “Use” as “Canon LBP841C” (below picture uses LBP251 as example), and then click “Add”



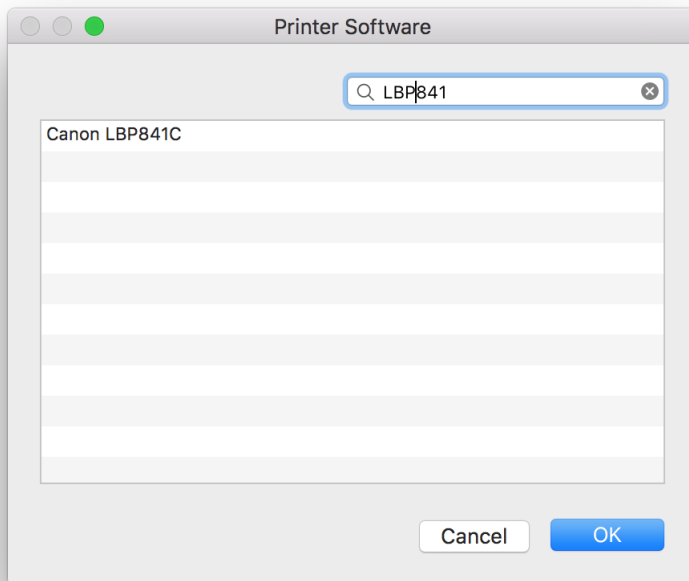
*** 如「使用（Use）」不是「Canon LBP841C」，請按以下步驟設定***

*** If “Use” is not “Canon LBP841C”, please refer to the steps below

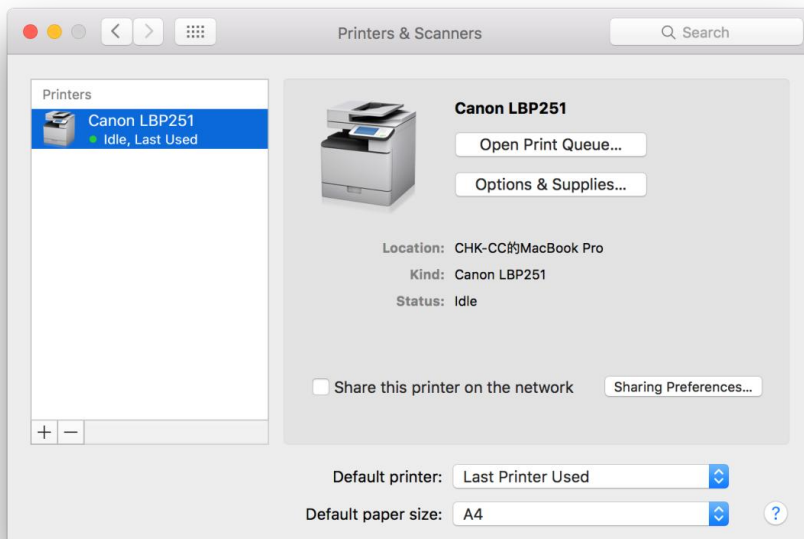
- a) 請如下圖按下「使用（Use）」的下拉選單，選擇” Select Software”
Please click the drop-down list of “Use”, and then choose “Select Software”



- b) 輸入 LBP841C 以搜尋「Canon LBP841C」，然後按「OK」
Enter “LBP841C”, and then choose “Canon LBP841C”, and then click “OK”



19. 新增印表機完成，驅動程式安裝完畢（下圖以 LBP251 為例子）
After the printer is added, driver installation is completed (below picture uses LBP251 as example)



<完>
<END>