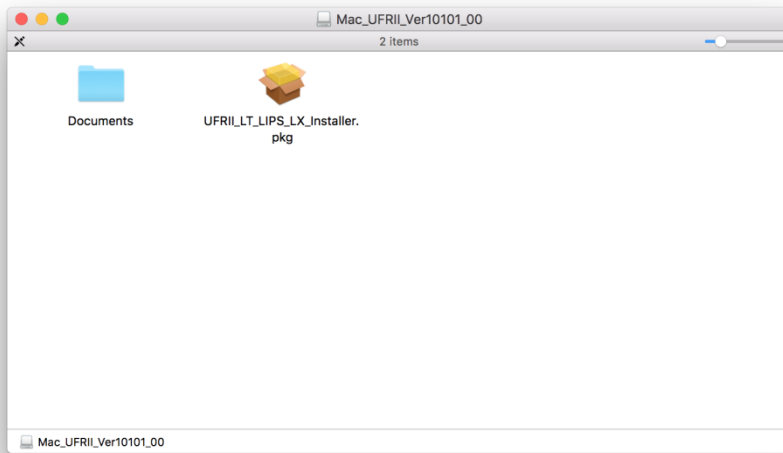


在 MAC OSX 以 USB 接駁安裝 LBP843Cx 驅動程式步驟 (以 OSX 10.11 作示範)
LBP843Cx printer driver Installation Guide for MAC OSX via USB (OSX 10.11 as example)

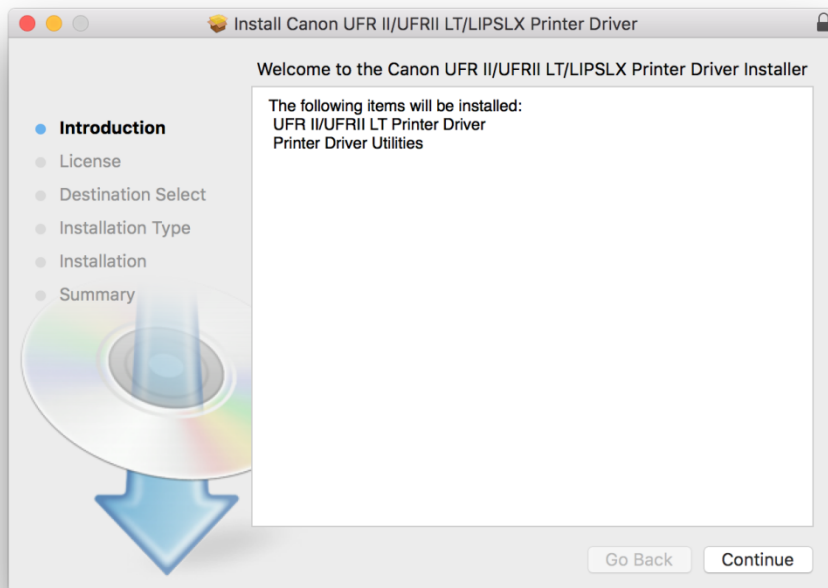
****注意: 安裝驅動程式前請勿接駁 USB 線，以免系統發生錯誤****

****Caution: Prior to the installation, please do not connect the USB port to avoid system error****

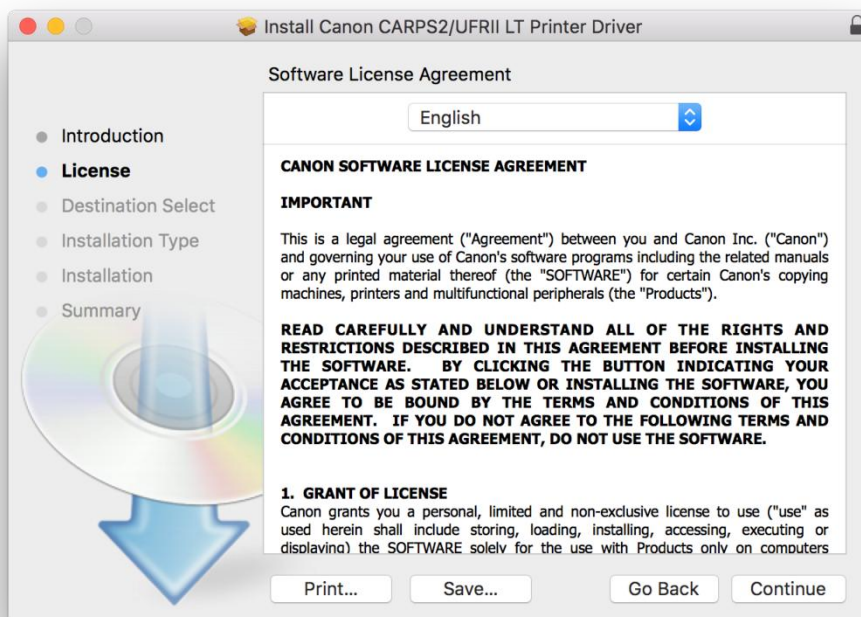
1. 到佳能網站 <https://hk.canon/en/support/imageCLASS%20LBP843Cx/model>
下載印表機的驅動程式 - UFR II/UFR II LT Printer Driver & Utilities for Macintosh
Go to: <https://hk.canon/en/support/imageCLASS%20LBP843Cx/model>
download the printer driver - UFR II/UFR II LT Printer Driver & Utilities for Macintosh
2. 開啟下載檔案「Mac_UFR II_Ver***」，然後開啟“UFR II_LT_***.pkg”文件開始安裝
Open “Mac_UFR II_Ver***”, and then Open “UFR II_LT_***.pkg” to start the driver installation



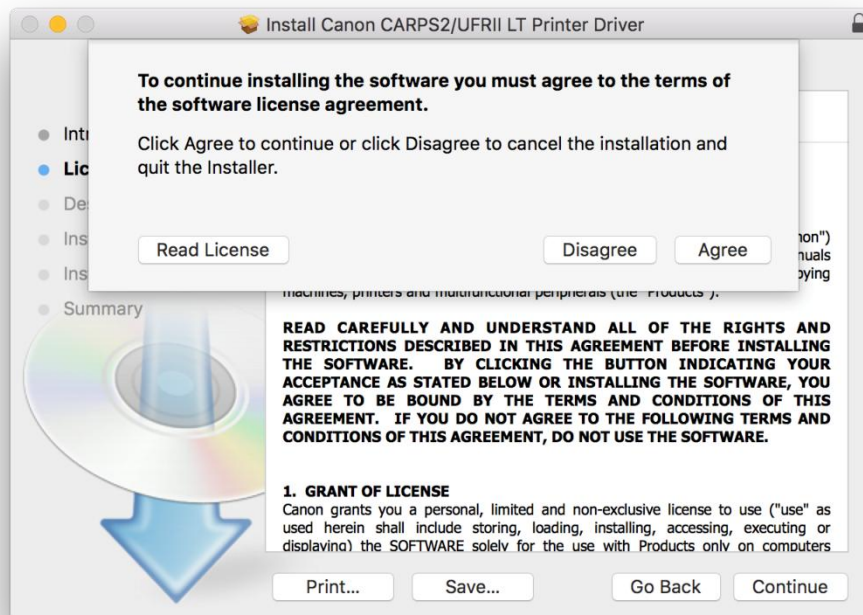
3. 按「Continue」
Click “Continue”



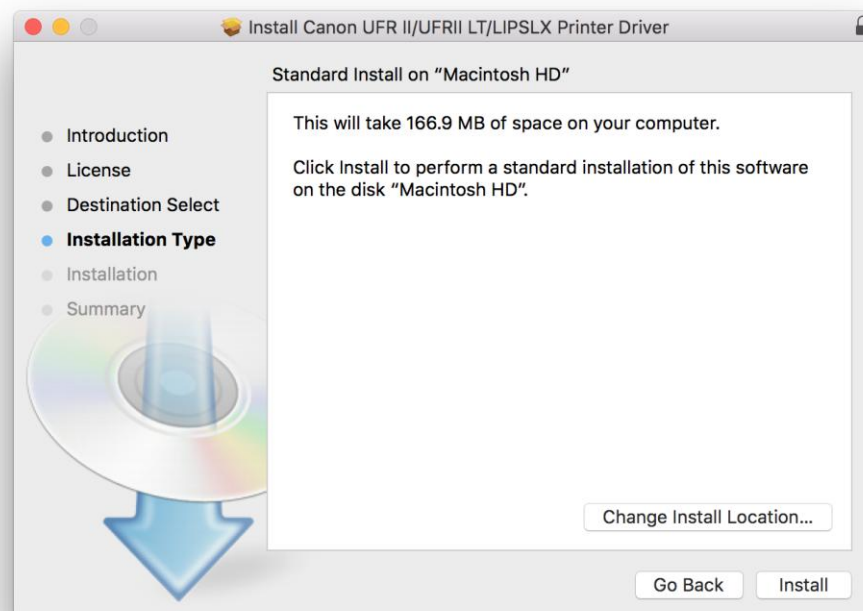
4. 按「Continue」
Click “Continue”



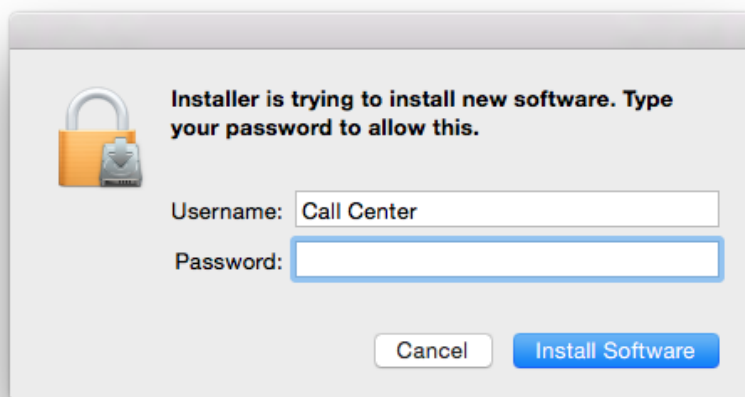
5. 按「Agree」
Click “Agree”



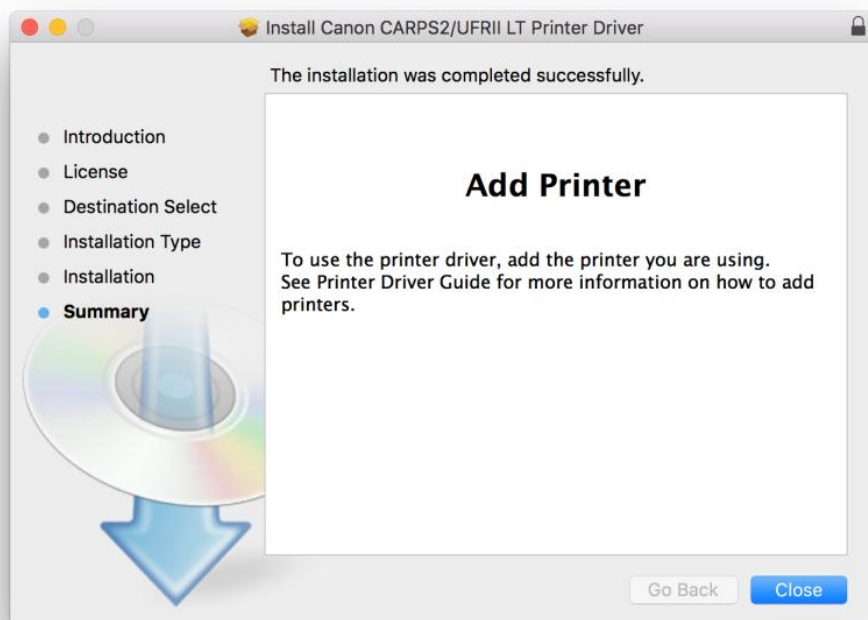
6. 按「Install」
Click “Install”



7. 輸入登入名稱及密碼（如出現以下畫面），然後按「安裝軟體」
Enter the login username and password (If this screen is shown below), and then click “Install Software”

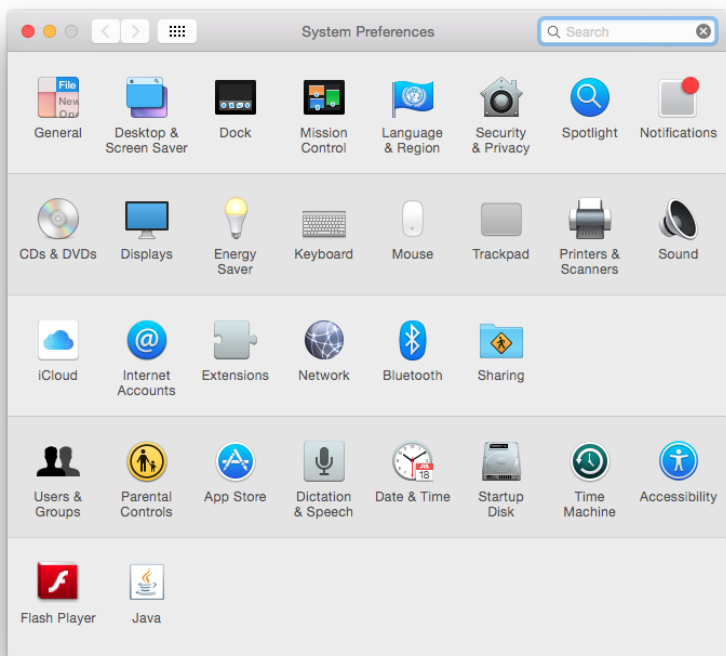


8. 按「Close」
Click “Close”

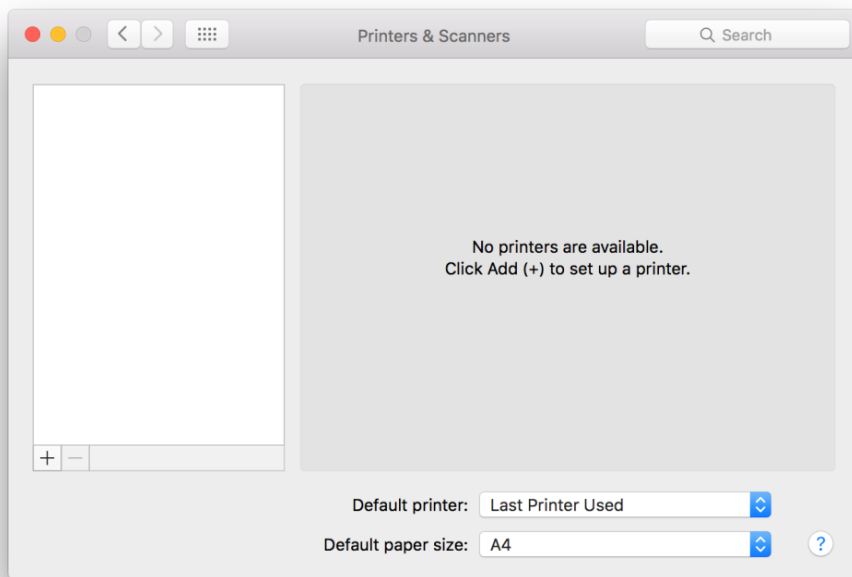


9. 完成安裝驅動程式後需新增印表機，請使用 USB 線連接印表機與電腦並啟動印表機，再按一下電腦左上角 < Apple > 圖案，選擇 <系統偏好設定>，再選擇 <印表機和掃描器>

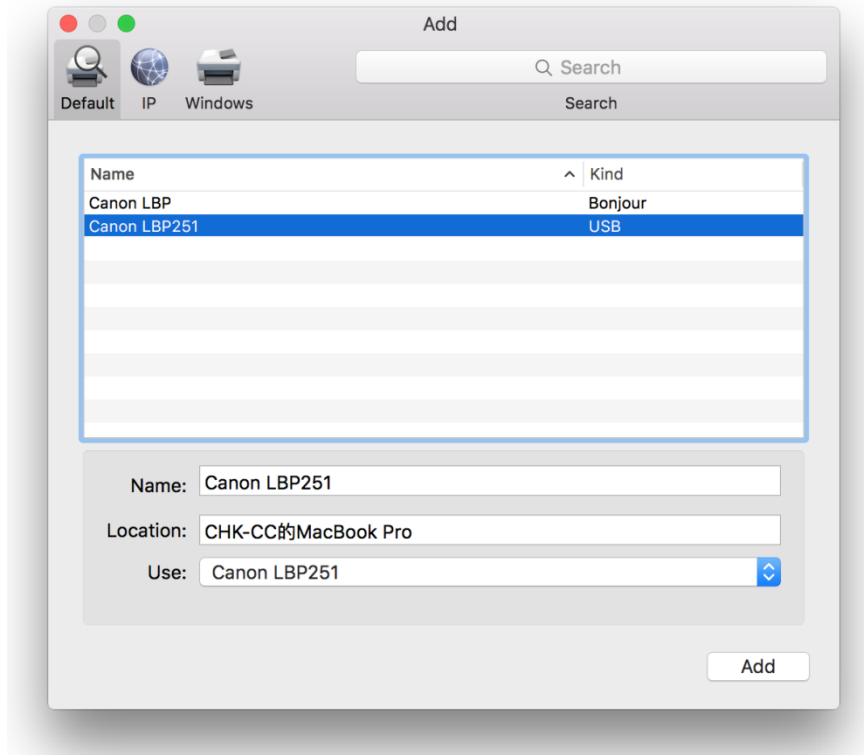
After finished the driver installation, connect the USB cable with printer and computer, turn on the printer, and please click the top left corner of the computer < Apple > icon, click <System Preferences>, and then click <Printers and Scanners>



10. 於 [印表機和掃描器 (Printers & Scanners)] 視窗，按一下「+」按鈕加入印表機
In the [Printers & Scanners] window, and then click the "+" button to register the printer



11. 名稱選擇「Canon LBP843C」，種類「USB」，確認「使用（Use）」為「Canon LBP843C」（下圖以 LBP251 為例子），然後按「加入（Add）」
Choose “Name” as “Canon LBP843C”, confirm “Kind” as “USB” and “Use” as “Canon LBP843C” (below picture uses LBP251 as example), and then click “Add”



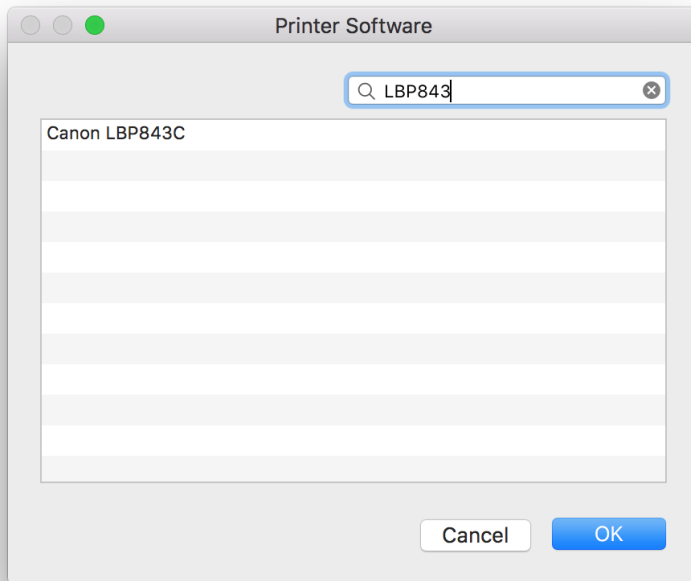
*** 如「使用（Use）」不是「Canon LBP843C」，請按以下步驟設定***

*** If “Use” is not “Canon LBP843C”, please refer to the steps below

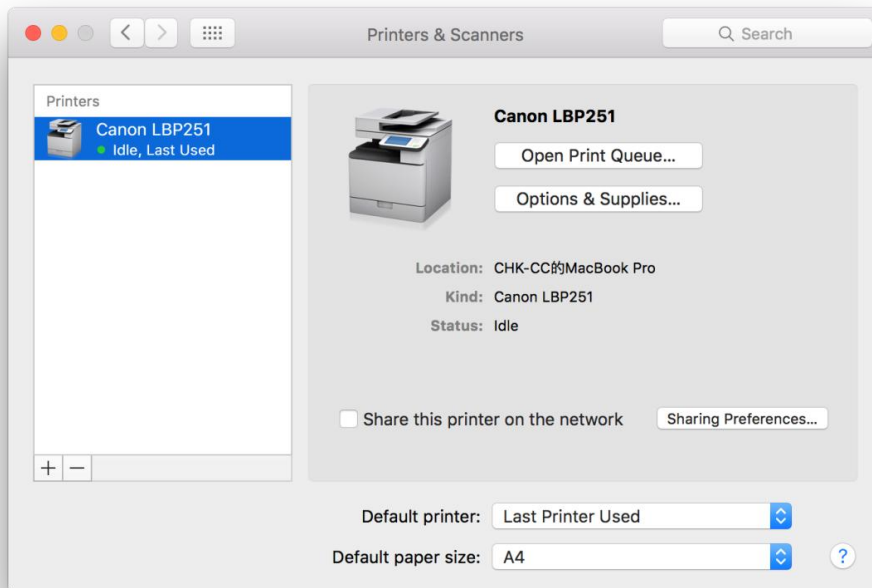
- a) 請如下圖按下「使用（Use）」的下拉選單，選擇“Select Software”
Please click the drop-down list of “Use”, and then choose “Select Software”



- b) 輸入 LBP843C 以搜尋「Canon LBP843C」，然後按「OK」
Enter "LBP843C", and then choose "Canon LBP843C", and then click "OK"



12. 新增印表機完成，驅動程式安裝完畢（下圖以 LBP251 為例子）
After the printer is added, driver installation is completed (below picture uses LBP251 as example)



<完>
<END>