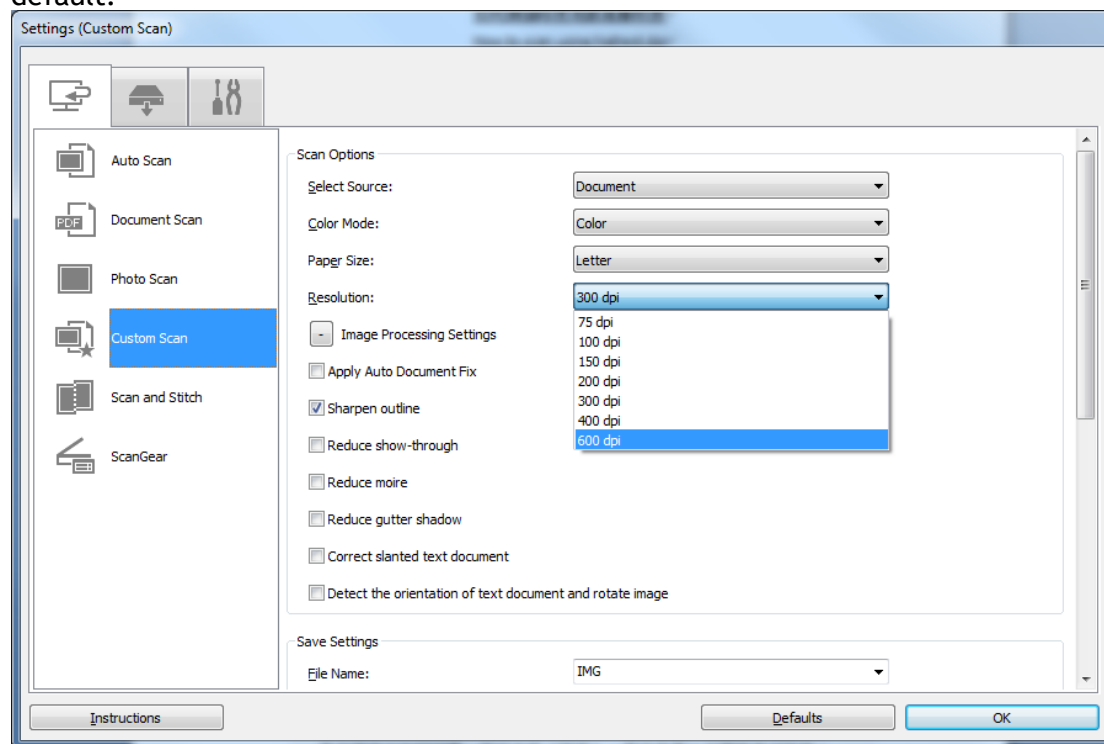


如何掃描時使用最高解析度 How to scan using highest dpi

雖然Canon 隨附掃描軟件如「IJ Scan Utility」和部份打印機的控制面板上可以選擇掃描解析度，最高也只在能選擇600dpi。

Although Canon's bundled software likes "IJ Scan Utility" or some of the printer's control panel can set the scan resolution, the highest dpi is only up to 600 dpi by default.



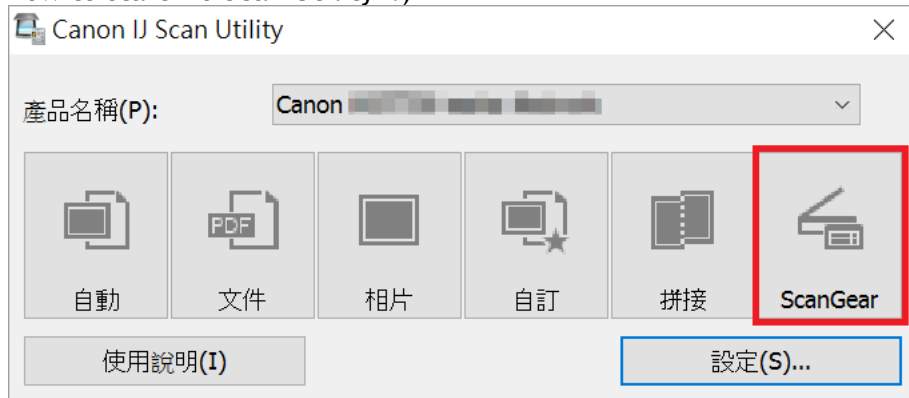
如需掃描時使用更高解析度，您需要從電腦進行掃描並使用掃描器驅動程式

ScanGear。以下為透過IJ Scan Utility 使用ScanGear 的方法：

If you want to use higher resolution, you need to scan from computer using ScanGear. Please refer to the procedure below to use ScanGear.

1. 首先開啟IJ Scan Utility，然後按ScanGear。（如不懂啟動IJ Scan Utility，可[按此](#)）

Start “IJ Scan Utility”, and then click ScanGear. (Click [here](#) if you don’t know how to start “IJ Scan Utility”.)

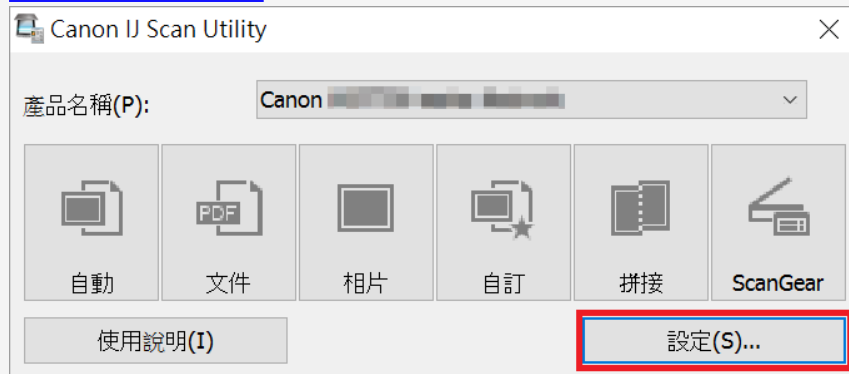


注釋 (Remark)

- 如需指定在透過啟動ScanGear（掃描器驅動程式）掃描項目時如何儲存影像以及在儲存後如何回應，您可先按「設定」，然後參考以下網頁進行設定：
<http://ugp01.c-ij.com/ij/webmanual/ScanUtility/W/MG3600%20series/1.1/TC/SU/su-114.html>

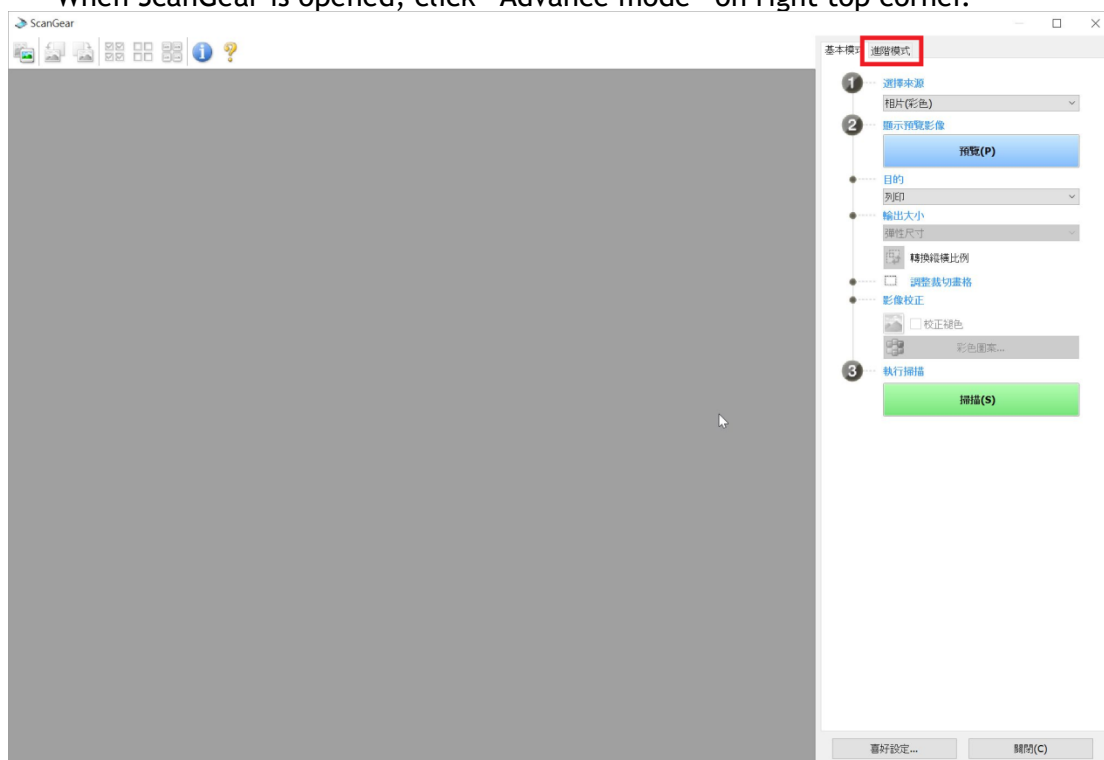
If you need to specify how to save images when scanning items by starting ScanGear (scanner driver) and how to respond after saving them, please click “Settings”, and refer to the webpage below for more detail:

<http://ugp01.c-ij.com/ij/webmanual/ScanUtility/W/MG3600%20series/1.1/EN/SU/su-114.html>



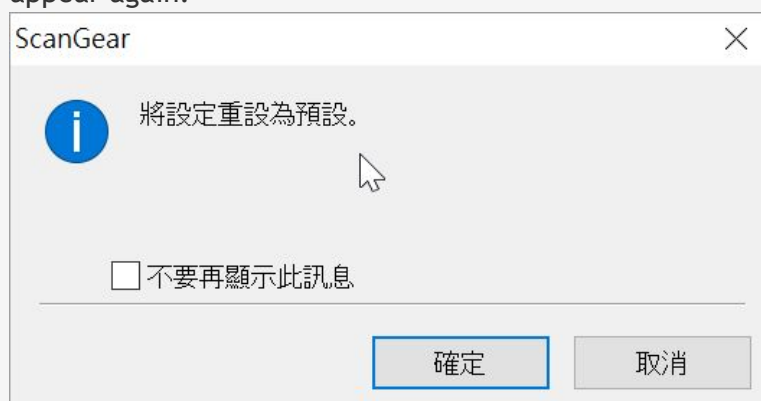
2. 開啟ScanGear後，按右上角「進階設定」。

When ScanGear is opened, click “Advance mode” on right top corner.



注釋 (Remark)

- 按「進階設定」後如出現以下對話框，請按「確定」。另如不希望這訊息再次出現，請別選「不要再顯示此訊息」。
If the message “Resets the setting to default” appear, click “OK”. You can select “Do not show this message again “if you don’t want this message appear again.



3. 轉換至「進階模式」後，您可在「輸出解析度」手動輸入解析度。（手動輸入的數值範圍為25-19200）

In “Advanced Mode”, you can input the resolution manually. (range between 25 to 19200.)



注釋 (Remark)

- 請留意「輸出解析度」或「資料大小」與大，掃描所需時間越耐。
Please note that if the number of “Output Resolution” or “Data Size” is more larger, more time of scanning is needed.

4. 當修改「輸出解析度」，可按「預覽」先檢視影像，然後按「掃描」儲存結果。
You can click “Preview” to view the image, and then click “Scan” to save the image.

常見問題

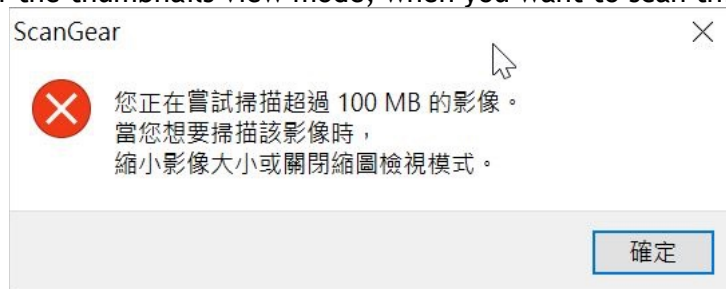
Frequently Asked Question

注意：當使用高解析度時，有可能會出現以下的信息，您可參考以下的方法處理有關信息：

Caution: If you scan using a high resolution, you may have messages below. You can follow the step below for the solution.

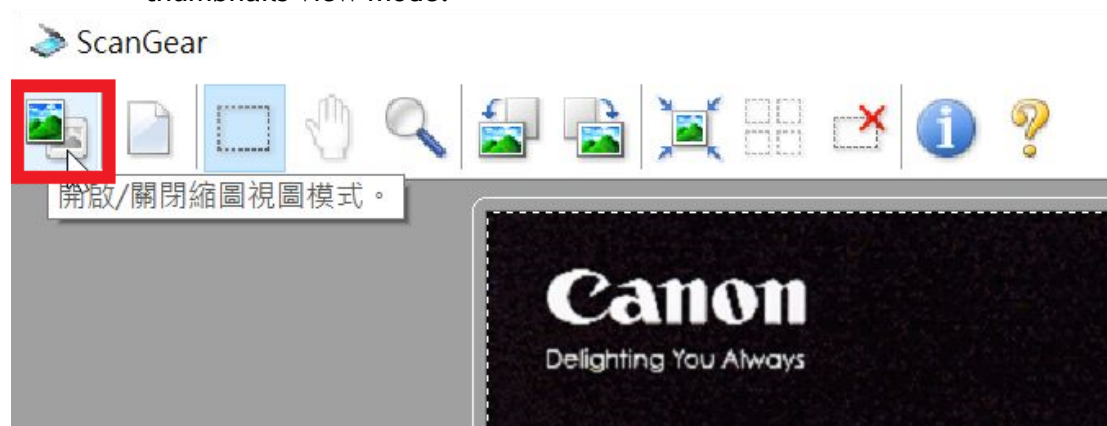
A) 「您正在嘗試掃描超過100MB的影像，當您想要掃描該影像時，縮小影像大小或關閉縮圖模式」

You are trying to scan an image exceeding 100MB. Reduce image size or switch off the thumbnails view mode, when you want to scan this image.



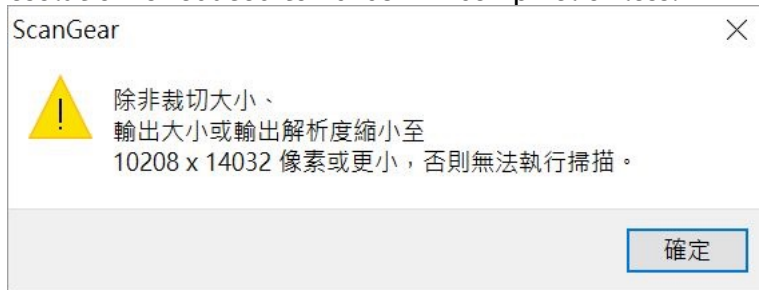
答：請按照下圖紅框按ScanGear左上角關閉縮圖視圖模式。

Please click the button on left top corner of ScanGear to switch off the thumbnails view mode.



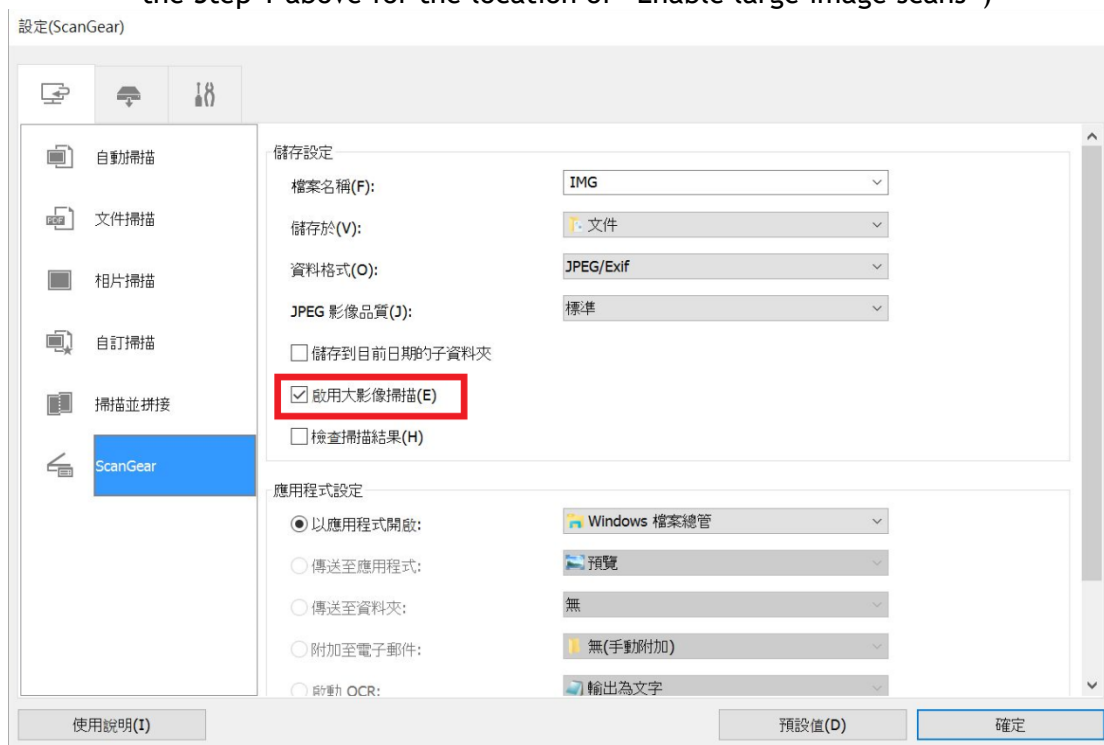
B) 「除非裁切大小、輸出大小或輸出解析度縮小至10208 x 14032像素或更小，否則無法執行掃描。」

“Scanning cannot be performed unless the crop size, output size or output resolution is reduced to 10208 x 14032 pixel or less.”



答：可考慮裁切大小、輸出大小或輸出解析度縮小至10208 x 14032像素或更小。如有必要維持輸出大小或輸出解析度，您可考慮在IJ Scan Utility中剔選「啟用大影像掃描」，啟用後ScanGear能處理達21000 x 30000像素和1.8GB的影像。（有關「啟用大影像掃描」的位置可參考步驟1.）

Please consider to crop size, output size or output resolution is reduced to 10208 x 14032 pixel or less. If you still want to keep the setting, you can select “Enable large image scans”. ScanGear can handle up to 21000 x 30000 pixel or 1.8GB image after enable this function. (Please refer to the Step 1 above for the location of “Enable large image scans”)



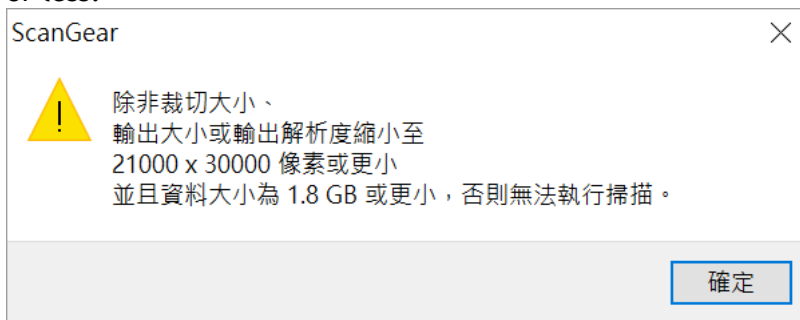
但留意在剔選「啟用大影像掃描」時會出現以下對話框，部份影像處理和資料格式如PDF的儲存會受限。

Please noted that some image processing and data formats for saving like PDF file are restricted.



C) 「除非裁切大小、輸出大小或輸出解析度縮小至21000 x 30000像素或更小並且資料大小為1.8GB或更小，否則無法執行掃描」

“Scanning cannot be performed unless the crop size, output size or output resolution is reduced to 21000 x 30000 pixels or less and the data size is 1.8 GB or less.”



答：由於ScanGear最大能處理21000 x 30000像素和1.8GB的影像，無法處理更大的檔案，因此請裁切大小、輸出大小或輸出解析度縮小至21000 x 30000像素或更小。

Since ScanGear only can handle up to 21000 x 30000 pixel or 1.8GB image. Please reduce the crop size, output size or output resolution to 21000 x 30000 pixels or less and the data size is 1.8 GB or less.

-完-
-End-