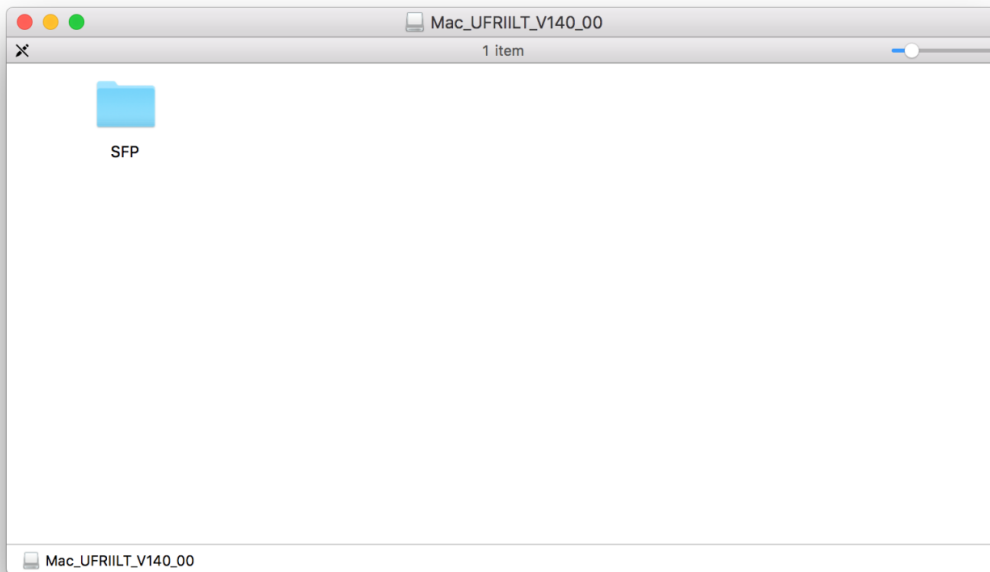
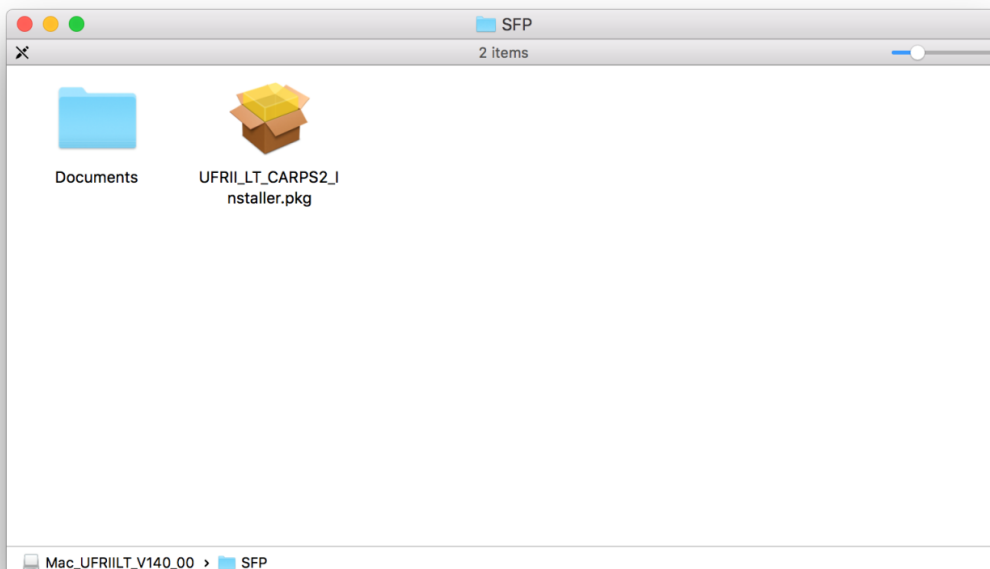


在MAC OSX以LAN接駁安裝LBP253x驅動程式步驟 (以OSX 10.11作示範)
LBP253x printer driver Installation Guide for MAC OSX via LAN (OSX 10.11 as example)

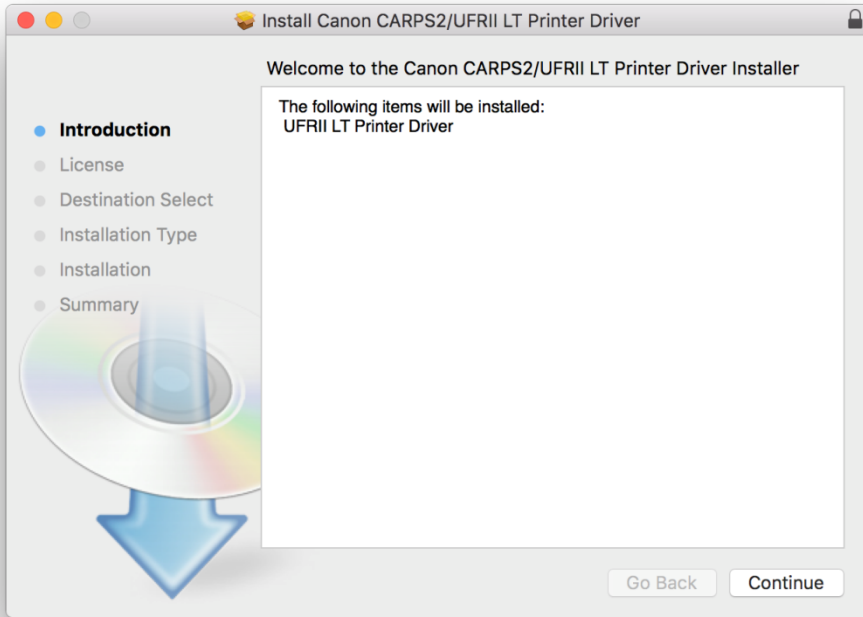
1. 到佳能網站<http://support-hk.canon-asia.com/>，選擇相關的印表機型號及下載印表機的驅動程式
Please visit <http://support-hk.canon-asia.com/> , select related printer model, and then download the printer driver
2. 開啟下載檔案「UFR1I LT Printer Driver」，進入「SFP」文件夾
Open “UFR1I LT Printer Driver”, and then open “SFP”



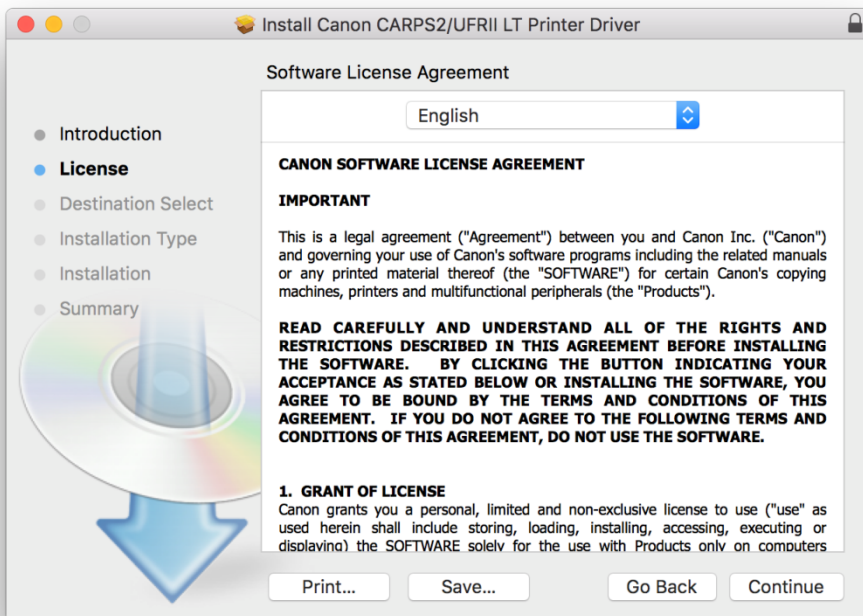
3. 開啓“UFR1I_LT_***.pkg”文件開始安裝設定
Open “UFR1I_LT_***.pkg” to start the driver installation



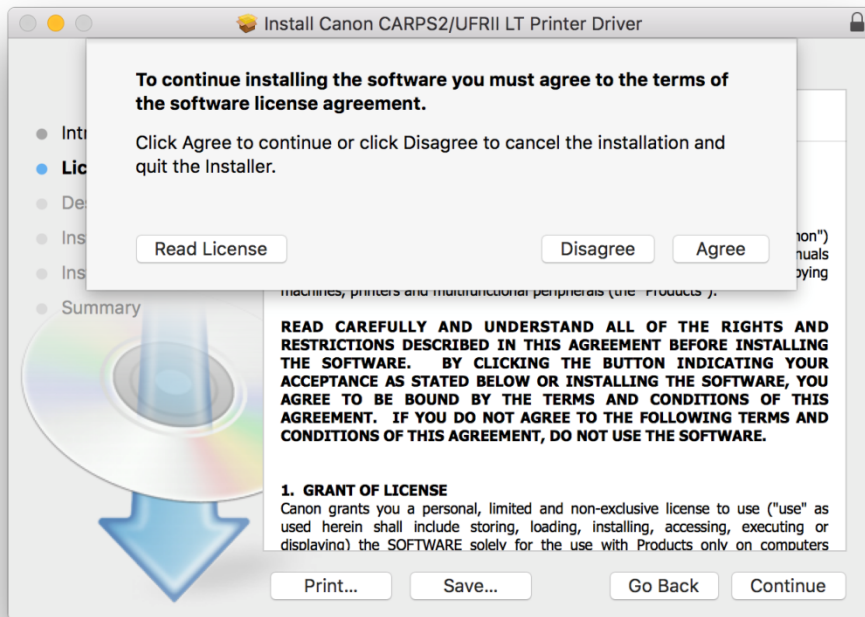
4. 按「Continue」
Click “Continue”



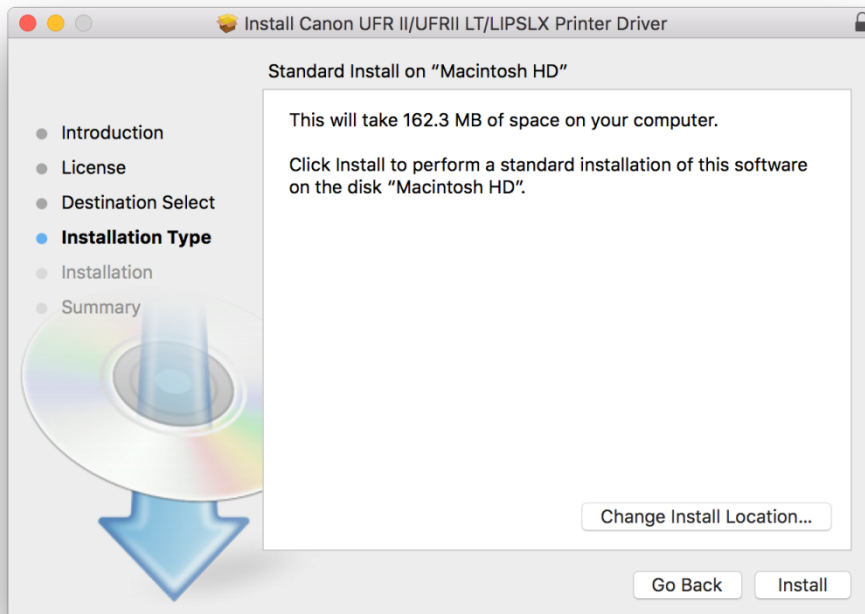
5. 按「Continue」
Click “Continue”



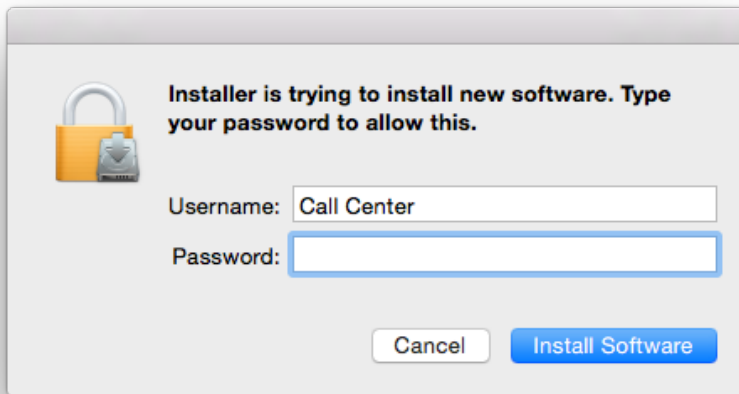
6. 按「Agree」
Click “Agree”



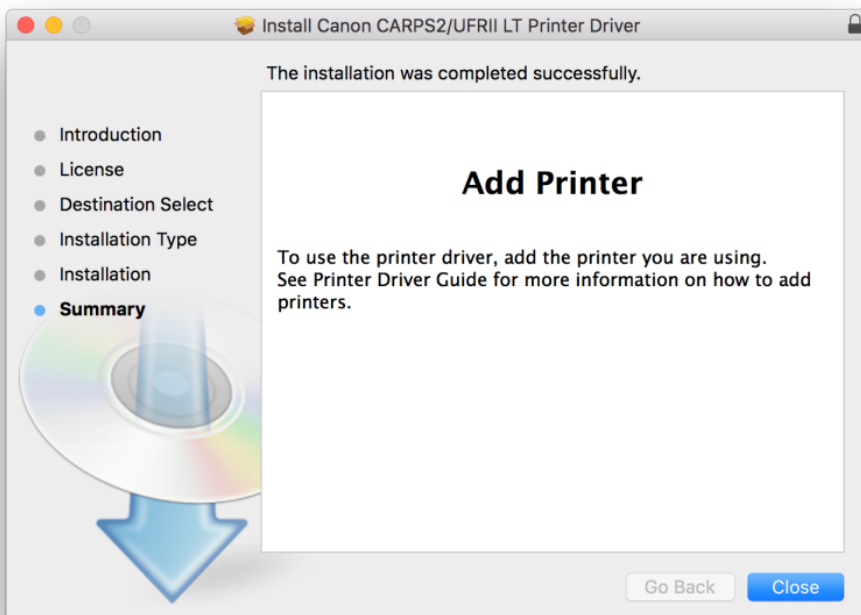
7. 按「Install」
Click “Install”



8. 請輸入登入名稱及密碼 (如出現以下畫面)
Please enter the login username and password (If this screen is shown below)



9. 按「Close」
Click "Close"

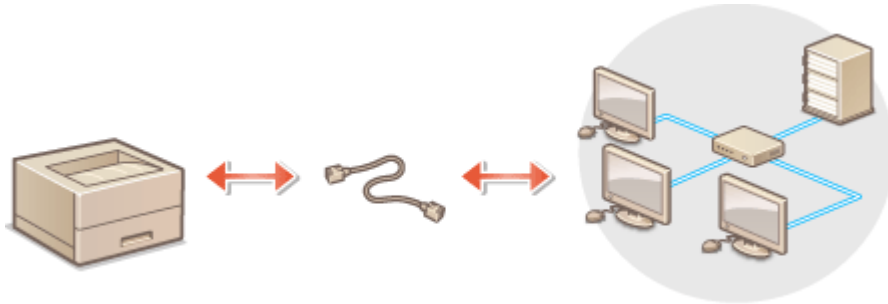


****完成安裝驅動程式後，請於印表機上設定連接到網絡**

****After finished the driver installation, please connect the printer to a wireless network**

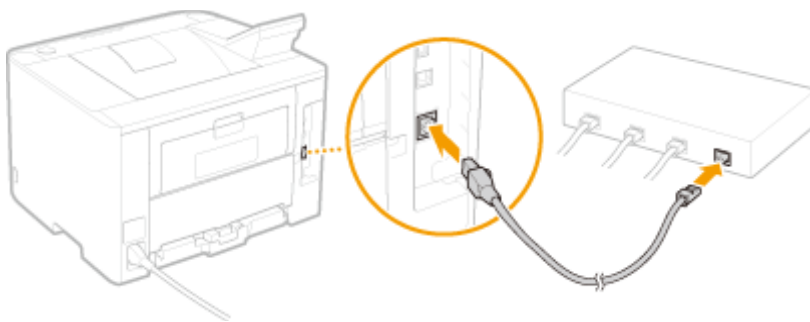
10. 將本機透過路由器連接到電腦，使用區域網路纜線將本機連接到路由器

Connect the machine to a computer via a router; use a LAN cable to connect the machine to the router



11. 使用區域網路纜線將本機連接到路由器，推入接頭，直至聽到喀嗒聲，開啟印表機

Connect the machine to a router by using a LAN cable, and push the connector in until it clicks into place, and then turn on the printer



等待約 2 分鐘，等待時，會自動設定 IP 位址

Wait approximately 2 minutes, while you wait, the IP address is set automatically

12. 開啟印表機，於印表機上，按「功能表」

Turn on printer, click <Menu> on printer

13. 使用▲/▼選擇「網路設定」，然後按「OK」

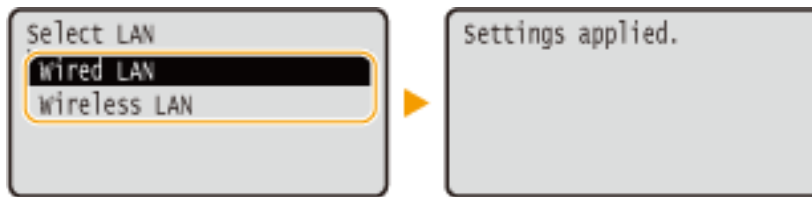
Use ▲/▼ to select <Network Settings>, and then click <OK>

14. 選擇「有線/無線區域網路」，然後按「OK」

Select <Network Settings>, and then click <OK>

15. 選擇「有線區域網路」，然後按「OK」

Select <Wired LAN>, and then click <OK>

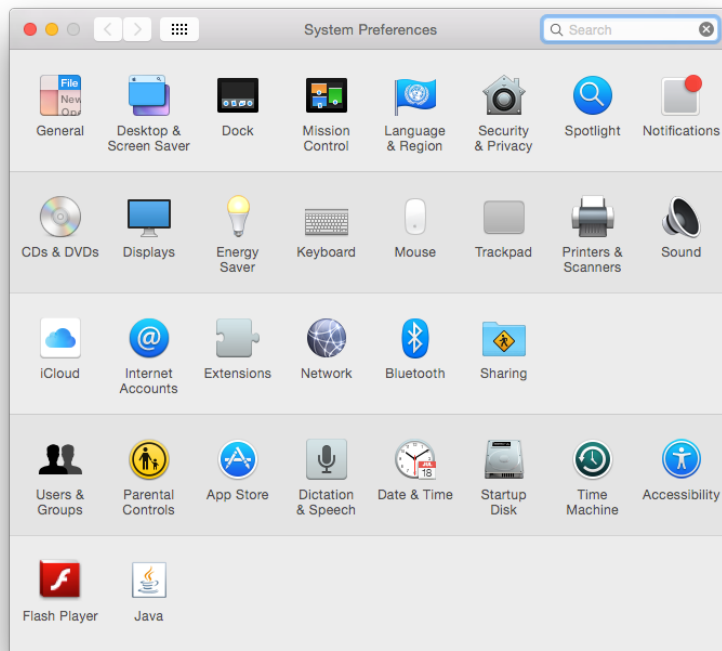


16. 按「功能表」

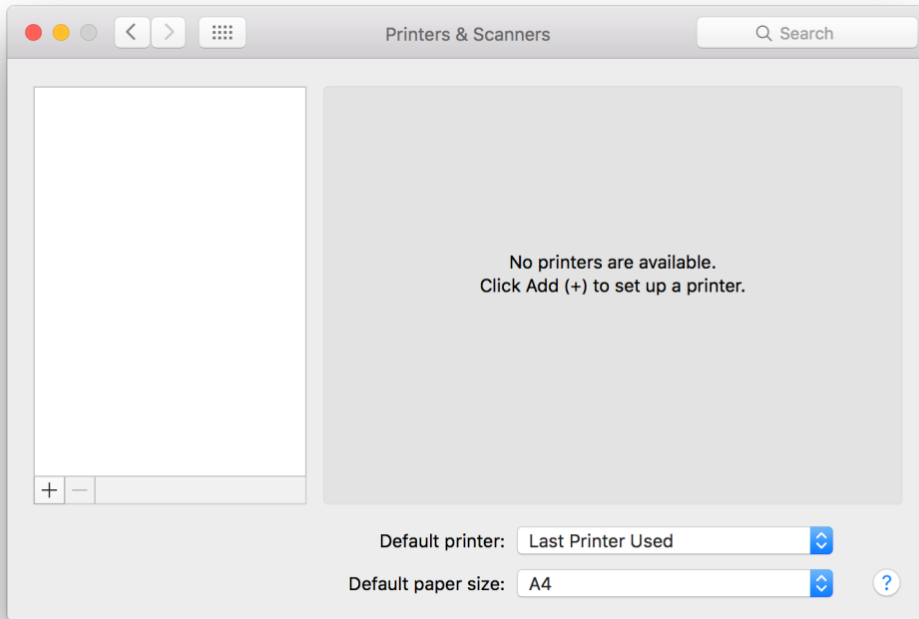
Click <Menu>

17. 完成印表機上的網路設後，按一下電腦左上角 < Apple > 圖案，選擇 <系統偏好設定>，再選擇 <印表機和掃描器>

After finished the network setup in the printer, please click the top left corner of the computer < Apple > icon, click <System Preferences>, and then click <Printers and Scanners>



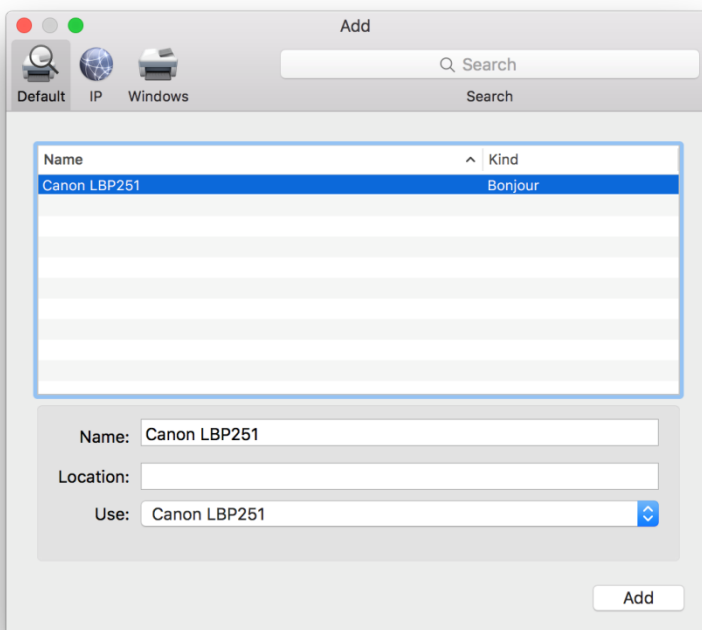
18. 於 [列印和掃描器 (Printers & Scanners)] 視窗，按一下「+」按鈕加入印表機
In the [Printers & Scanners] window, click the "+" button to register the printer



19. 名稱選擇「Canon LBP253」，種類「Bonjour」，確認「使用 (Use)」為「Canon LBP253」，然後按「加入 (Add)」 (以下圖片以LBP251作示範)

Choose "Name" as "Canon LBP253", confirm "Kind" as "Bonjour" and "Use" is "Canon LBP253", and then click "Add"

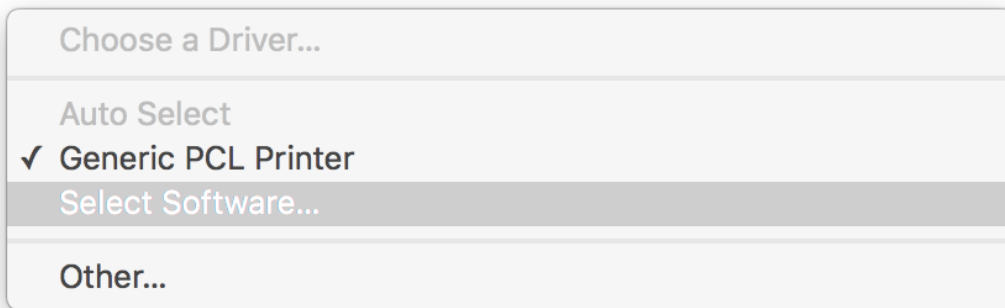
(The following picture is using LBP251 as an example)



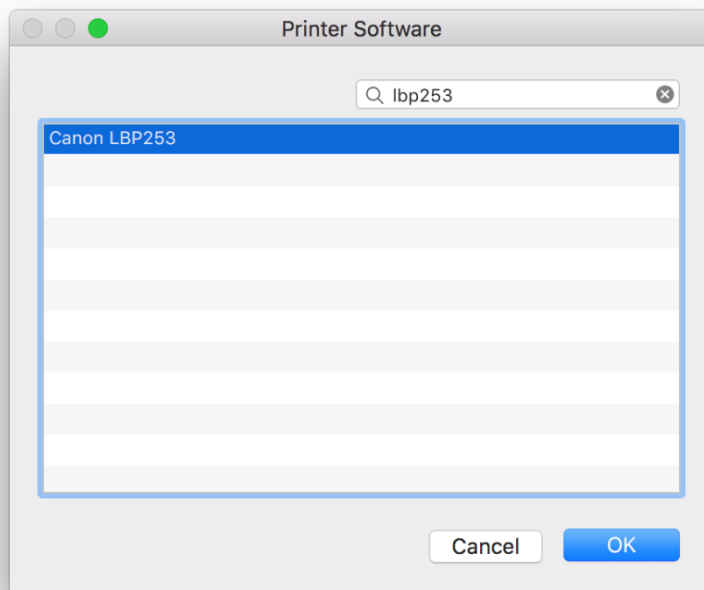
*** 如「使用 (Use)」不是「Canon LBP253」，請按以下步驟設定***

*** If "Use" is not "Canon LBP253", please refer to the steps below

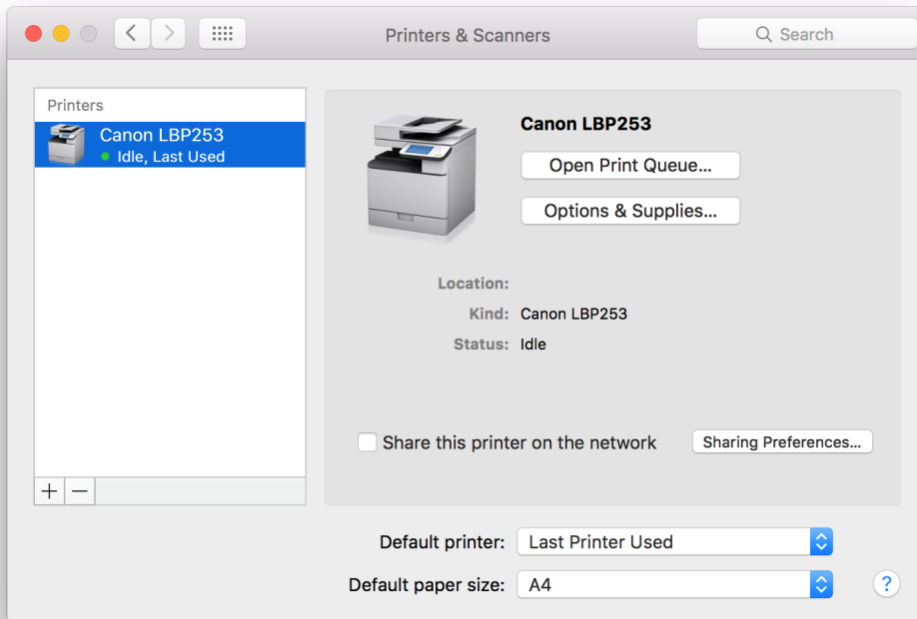
- a) 請如下圖打開「使用 (Use)」的選單，選擇 " Select Software "
- Please open "Use", and then choose "Select Software"



- b) 輸入LBP253以搜尋「Canon LBP253」
- Enter "LBP253", and then choose "Canon LBP253"



20. 新增印表機完成，驅動程式安裝完畢
After the printer is added, driver installation is completed



<完>
<END>