

在 MAC OSX 以 USB 接駁安裝 LBP253x 驅動程式步驟 (以 OSX 10.11 作示範)
LBP253x printer driver Installation Guide for MAC OSX via USB (OSX 10.11 as example)

****注意: 安裝驅動程式前請勿接駁 USB 線，以免系統發生錯誤****

****Caution: Prior to the installation, please do not connect the USB port to avoid system error****

1. 到佳能網站 <https://hk.canon/en/support>，選擇相關的印表機型號及下載印表機的驅動程式
Go to: <https://hk.canon/en/support>, select related printer model, then download the printer driver



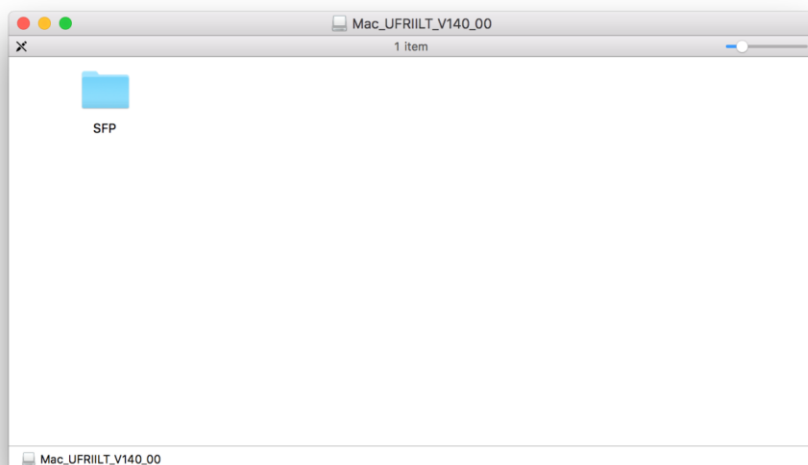
2. 選擇並下載以下檔案

Choose and download below files:

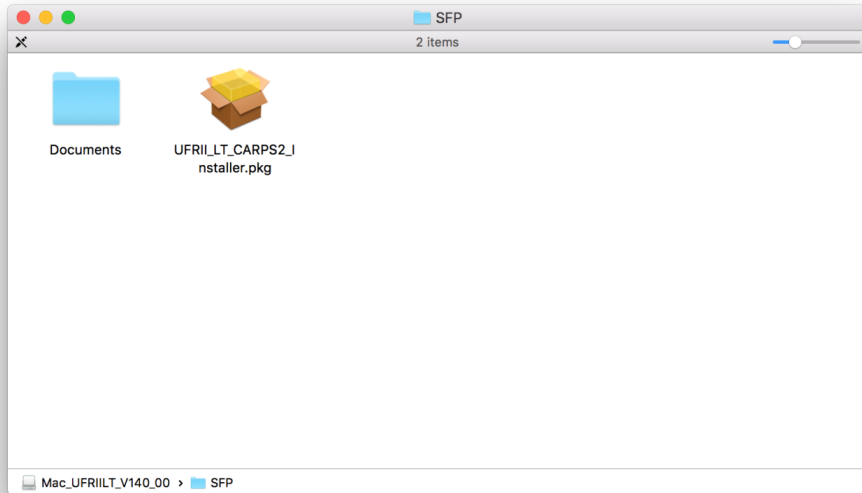
- 打印機驅動程式 / Printer Driver

[UFR II/UFR II LT Printer Driver & Utilities for Macintosh Vx.x.0 \[Mac OS : 10.x/10.xx\]](#)

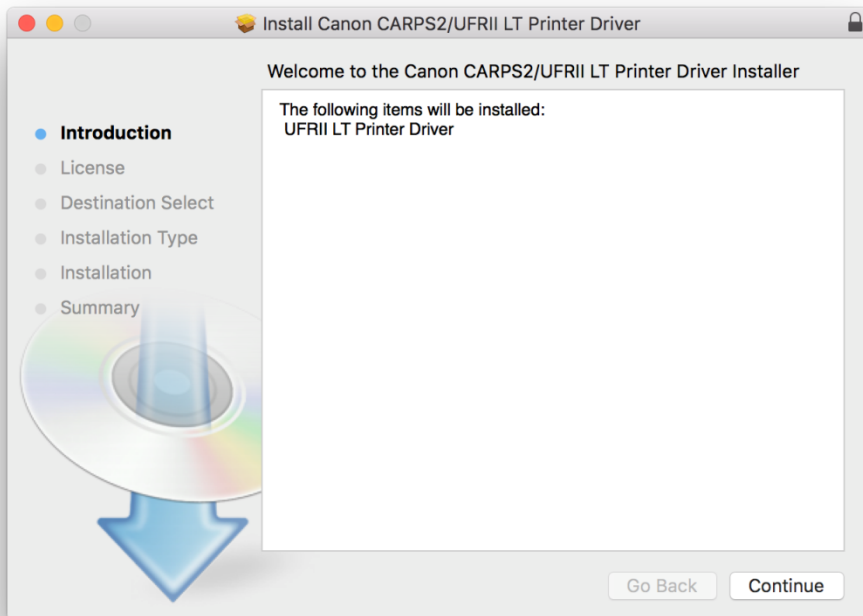
3. 開啟下載檔案「UFR II LT Printer Driver」，進入「SFP」文件夾
Open “UFR II LT Printer Driver”, and then open “SFP”



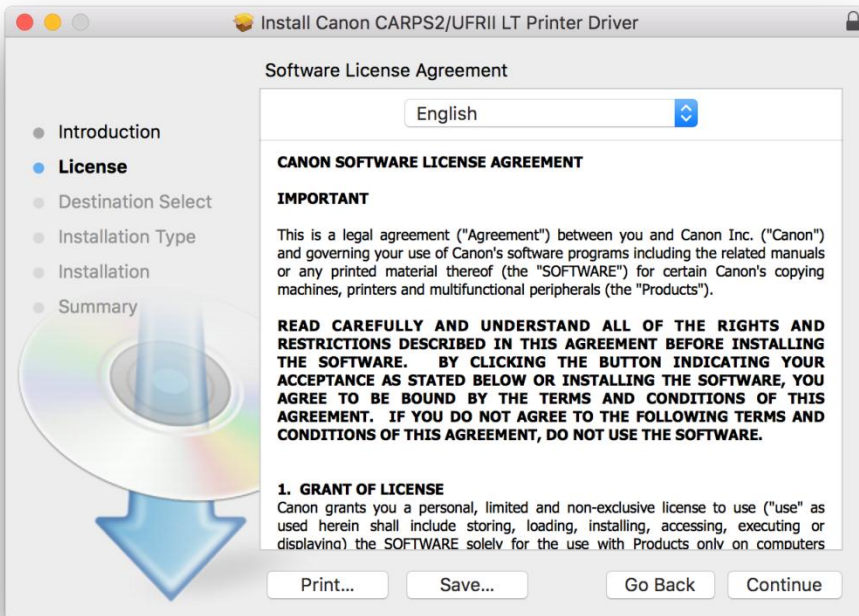
4. 開啓“UFR1I_LT_***.pkg”文件開始安裝設定
Open “UFR1I_LT_***.pkg” to start the driver installation



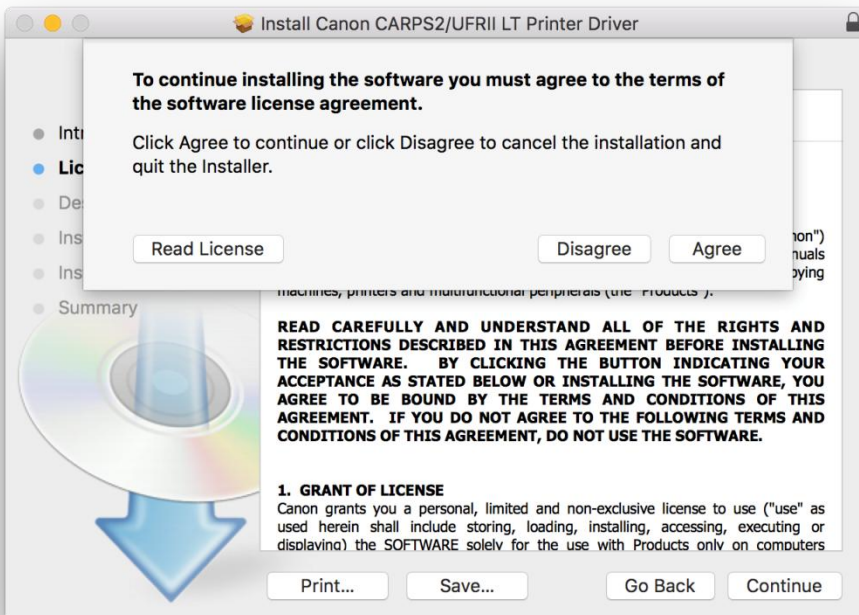
5. 按「Continue」
Click “Continue”



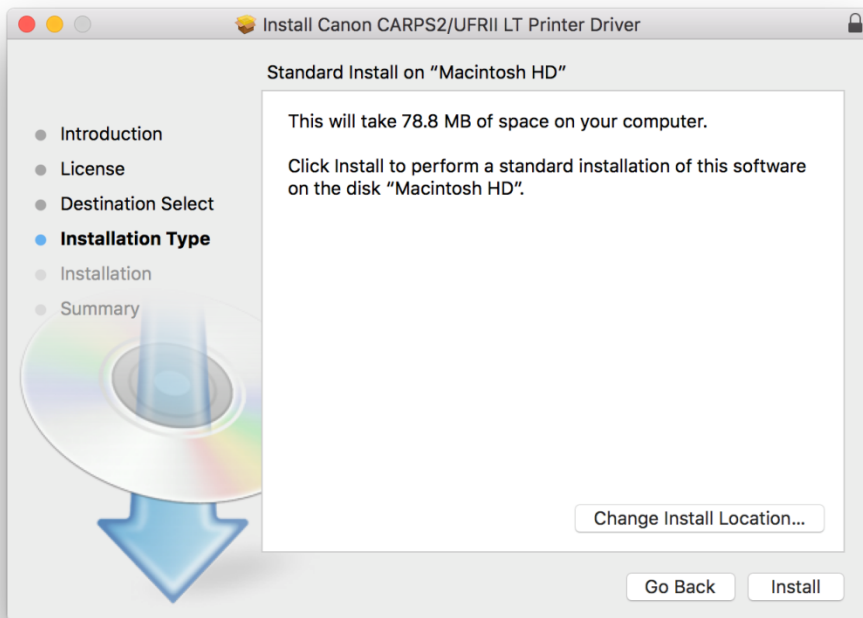
6. 按「Continue」
Click “Continue”



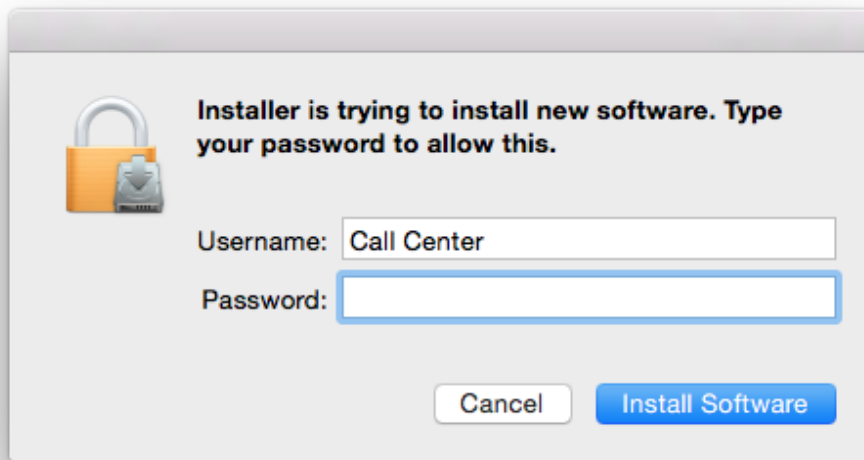
7. 按「Agree」
Click “Agree”



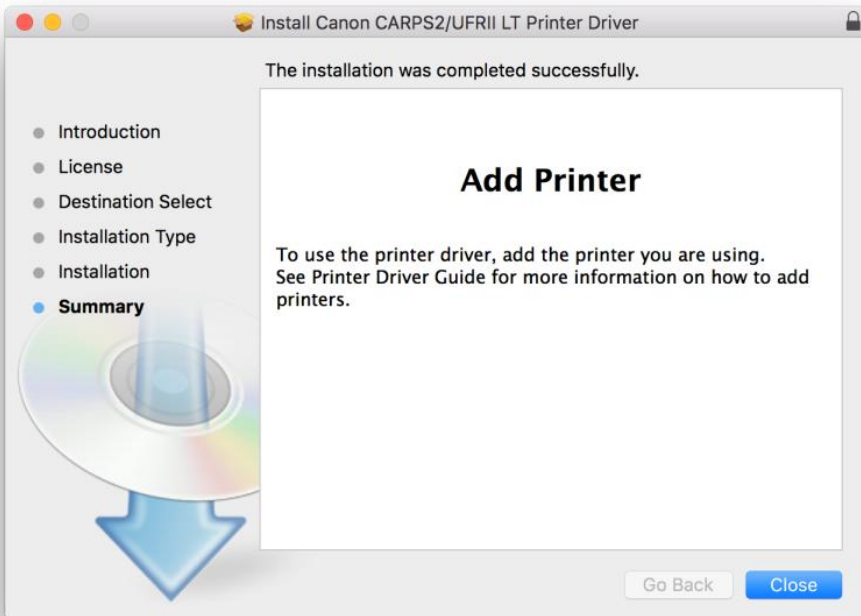
8. 按「Install」
Click “Install”





9. 輸入登入名稱及密碼（如出現以下畫面）
Enter the login username and password (If this screen is shown below)

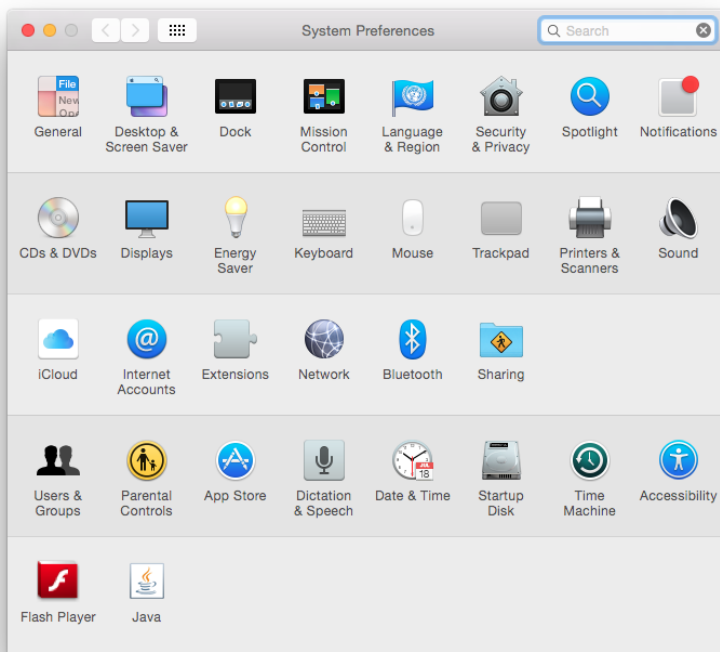


10. 按「Close」
Click “Close”

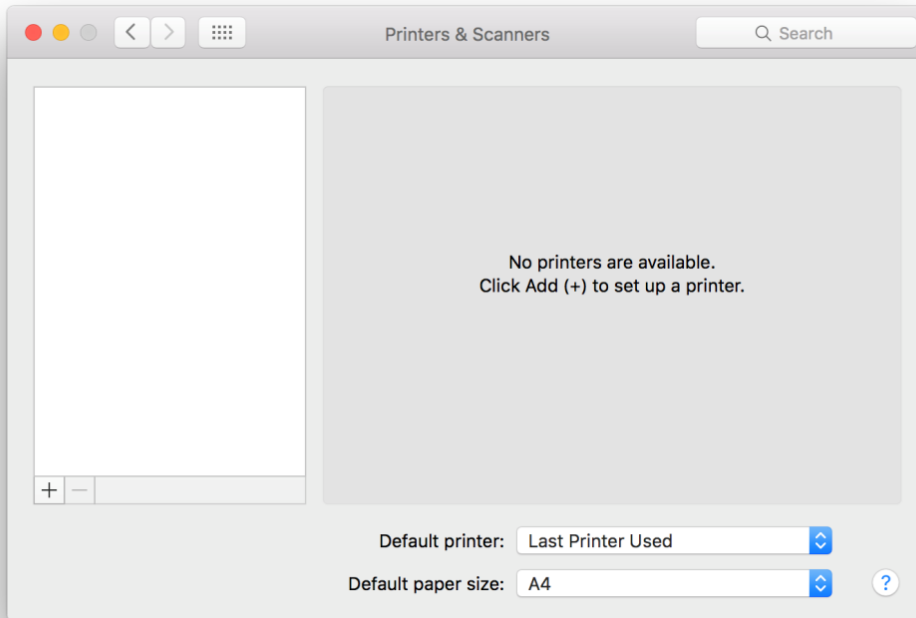


11. 完成安裝驅動程式後需新增印表機，請使用 USB 線連接印表機與電腦，按一下電腦左上角 <  > 圖案，選擇 <系統偏好設定>，再選擇 <印表機和掃描器>

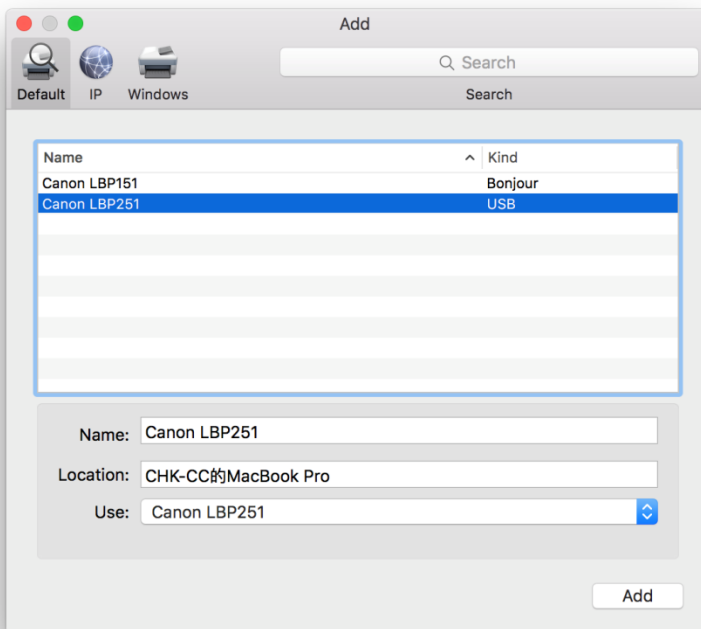
After finished the driver installation, connect the USB cable with printer and computer, please click the top left corner of the computer <  > icon, click <System Preferences>, and then click <Printers and Scanners>



12. 於〔列印和掃描器 (Printers & Scanners)〕視窗，按一下「+」按鈕加入印表機
In the [Printers & Scanners] window, click the "+" button to register the printer



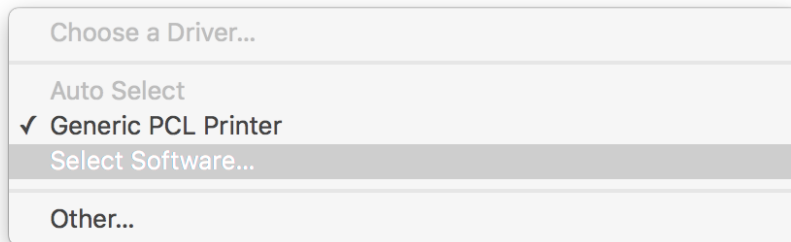
13. 名稱選擇「Canon LBP253」，種類「USB」，確認「使用 (Use)」為「Canon LBP253」，然後按「加入 (Add)」(以下圖片以 LBP251 作示範)
Choose "Name" as "Canon LBP253", confirm "Kind" as "USB" and "Use" is "Canon LBP253", and then click "Add"
(The following picture is using LBP251 as an example)



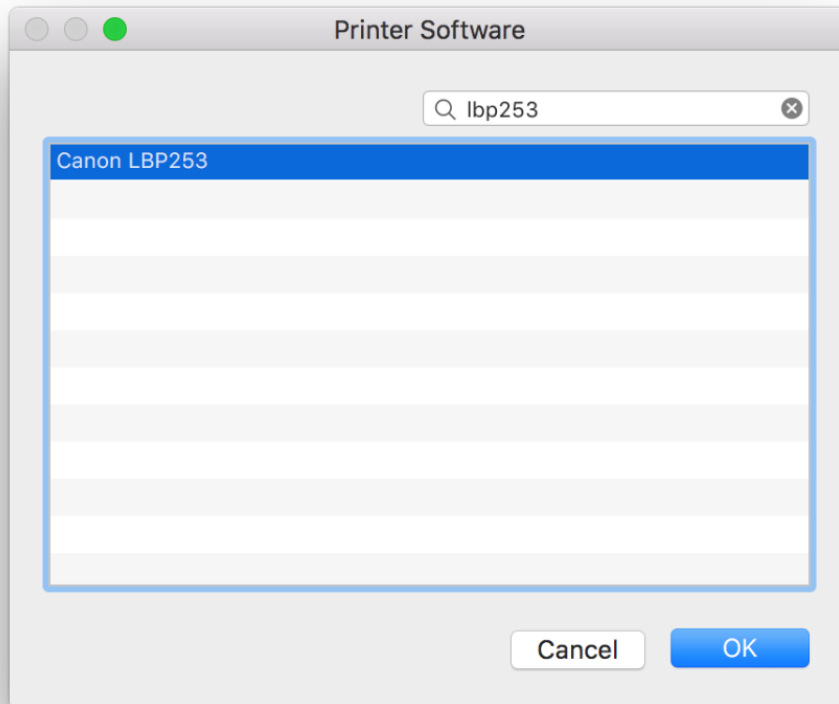
*** 如「使用 (Use)」不是「Canon LBP253」，請按以下步驟設定***

*** If "Use" is not "Canon LBP253", please refer to the steps below

- a) 請如下圖打開「使用 (Use)」的選單，選擇 "Select Software"
Please open "Use", and then choose "Select Software"

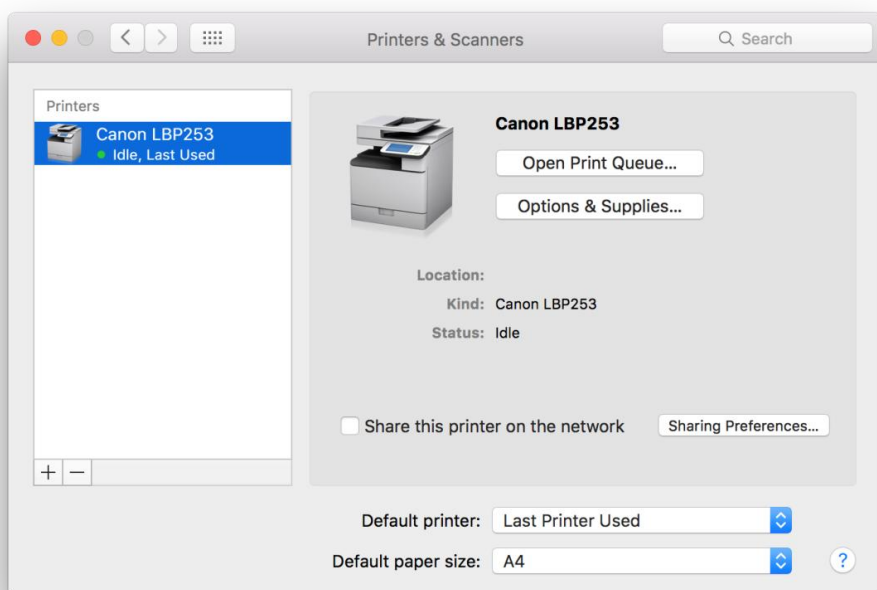


- b) 輸入 LBP253 以搜尋「Canon LBP253」
Enter "LBP253", and then choose "Canon LBP253"



14. 新增印表機完成，驅動程式安裝完畢

After the printer is added, driver installation is completed



<完>

<END>