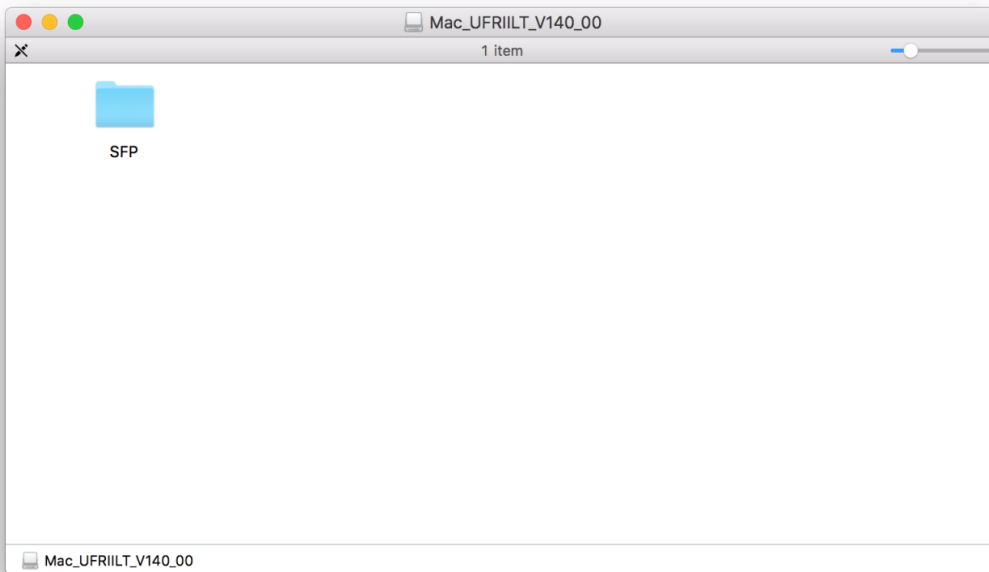
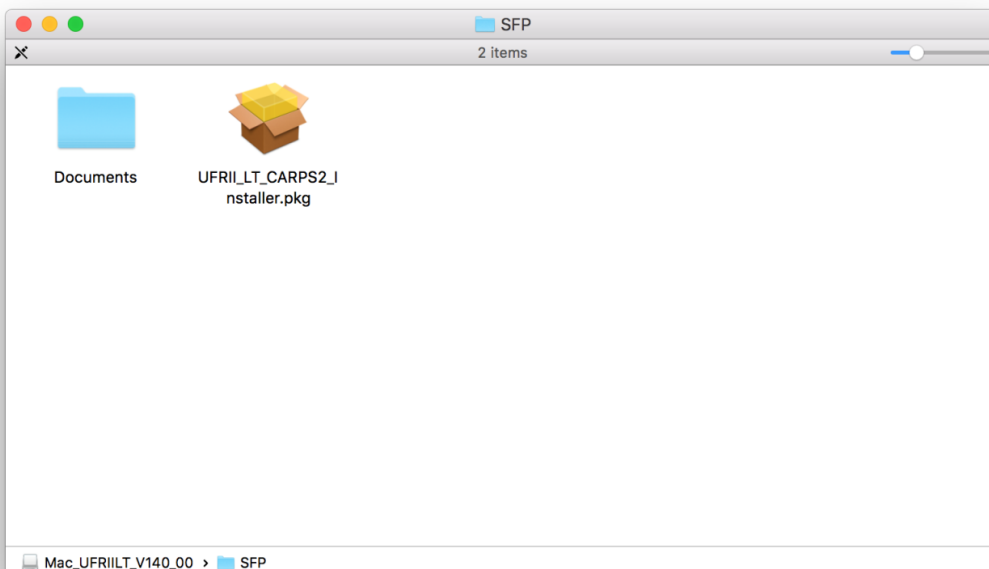


在MAC OSX以WIFI接駁安裝LBP251dw驅動程式步驟 (以OSX 10.11作示範)
LBP251dw printer driver Installation Guide for MAC OSX via WIFI (OSX 10.11 as example)

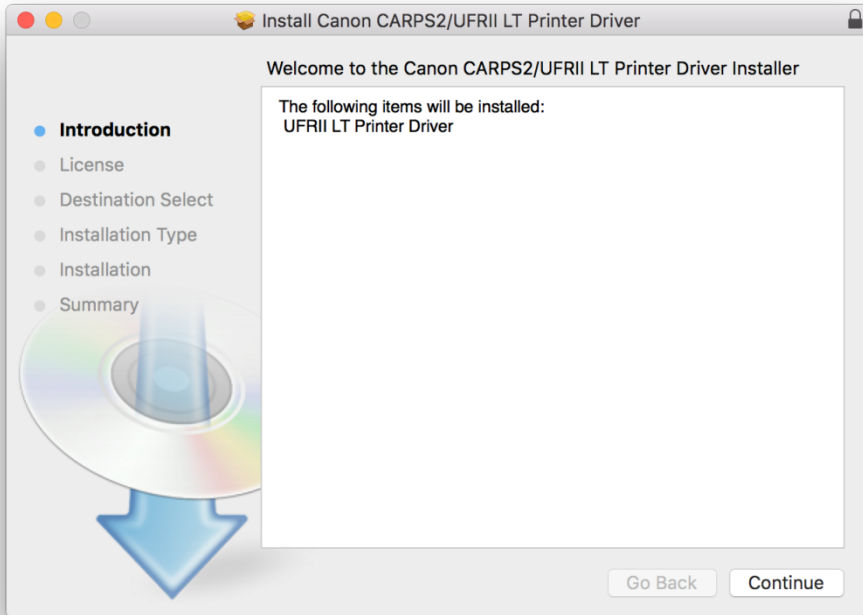
1. 到佳能網站<http://support-hk.canon-asia.com/>，選擇相關的印表機型號及下載印表機的驅動程式
Please visit <http://support-hk.canon-asia.com/> , select related printer model, and then download the printer driver
2. 開啟下載檔案「UFR1I LT Printer Driver」，進入「SFP」文件夾
Open “UFR1I LT Printer Driver”, and then open “SFP”



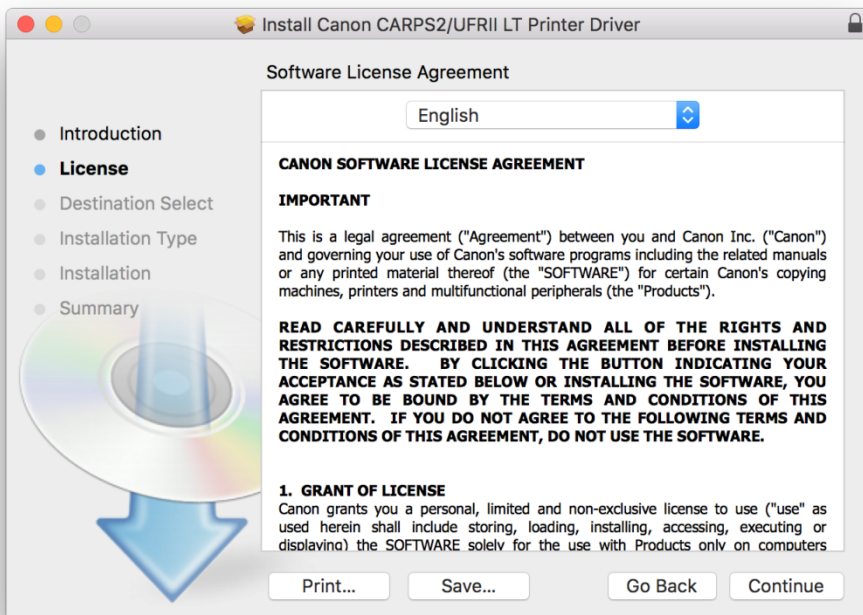
3. 開啓“UFR1I_LT_***.pkg”文件開始安裝設定
Open “UFR1I_LT_***.pkg” to start the driver installation



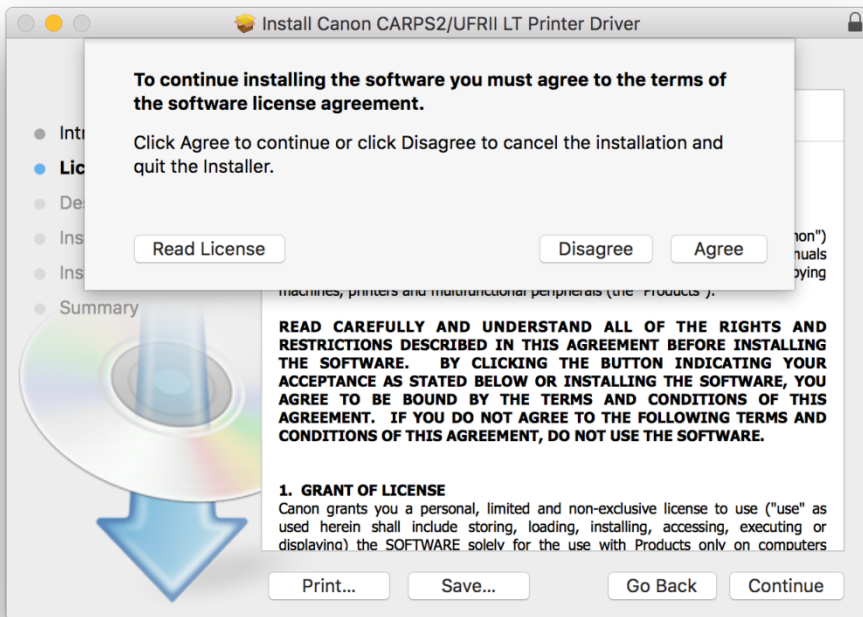
4. 按「Continue」
Click “Continue”



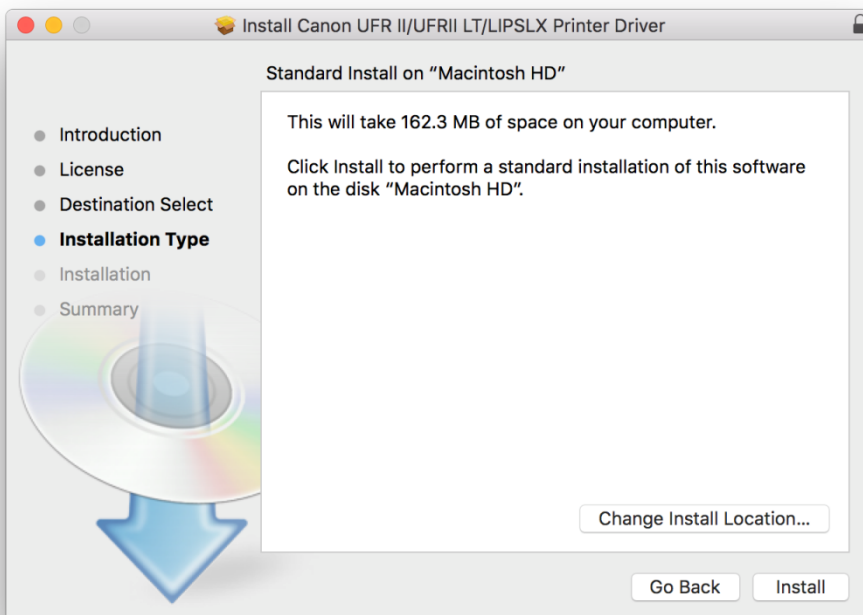
5. 按「Continue」
Click “Continue”



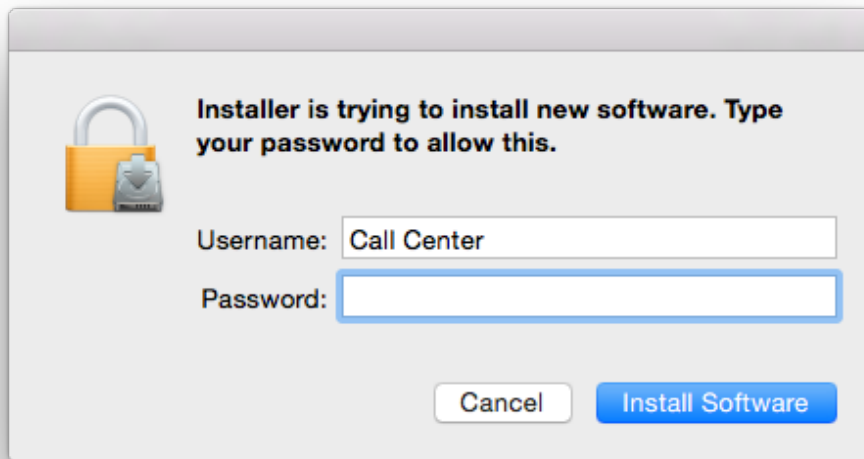
6. 按「Agree」
Click “Agree”



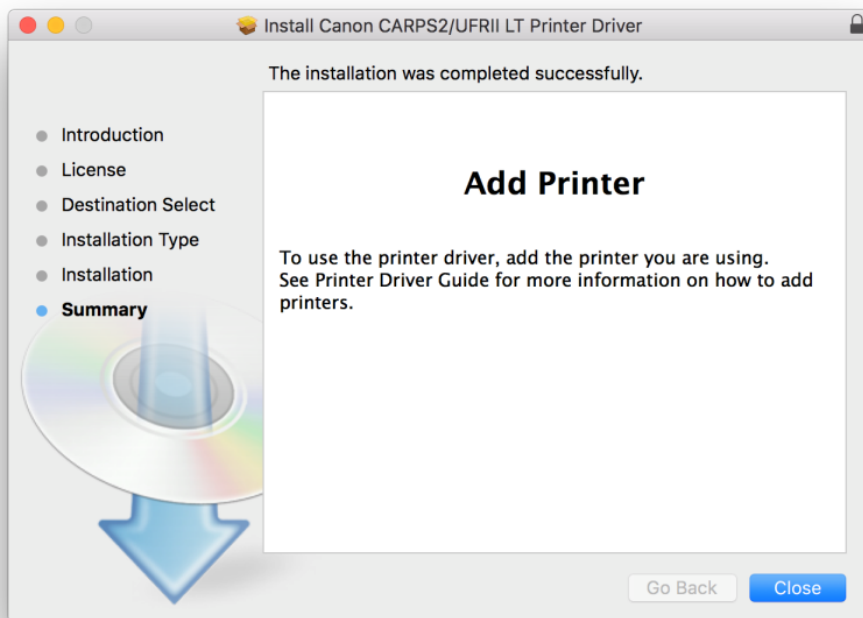
7. 按「Install」
Click “Install”



8. 請輸入登入名稱及密碼 (如出現以下畫面)
Please enter the login username and password (If this screen is shown below)



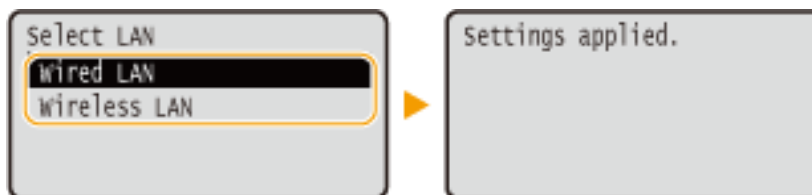
9. 按「Close」
Click “Close”



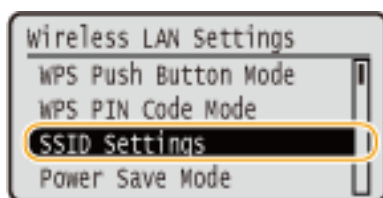
****完成安裝驅動程式後，請於印表機上設定連接到網絡**

****After finished the driver installation, please connect the printer to a wireless network**

10. 開啟印表機，於印表機上，按「功能表」
Turn on printer, click <Menu> on printer
11. 使用▲/▼選擇「網路設定」，然後按「OK」
Use ▲/▼ to select <Network Settings>, and click <OK>
12. 選擇「有線/無線區域網路」，然後按「OK」
Select <Network Settings>, and click <OK>
13. 選擇「無線區域網路」，然後按「OK」
Select <Wireless LAN>, and click <OK>



14. 按「功能表」
Click <Menu>
15. 選擇「無線區域網路設定」，然後按「OK」
Select <Wireless LAN Settings>, and click <OK>
16. 閱讀顯示的訊息，然後按「OK」
Read the message that is displayed, and click <OK>
17. 選擇「SSID設定」，然後按「OK」
Select <SSID Settings>, and click <OK>

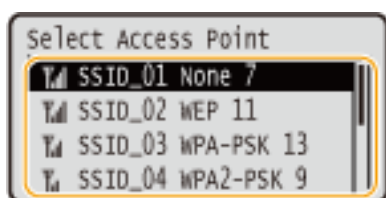


18. 選擇「選擇存取點」，然後按「OK」
Select <Select Access Point>, and click <OK>

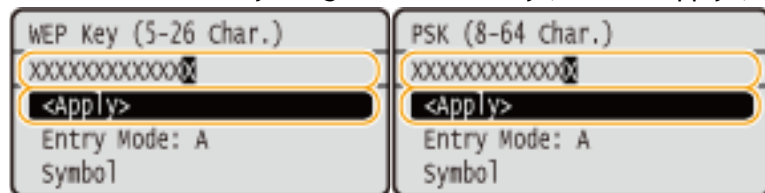
19. The machine starts searching for available wireless routers
本機開始搜尋可用的無線路由器



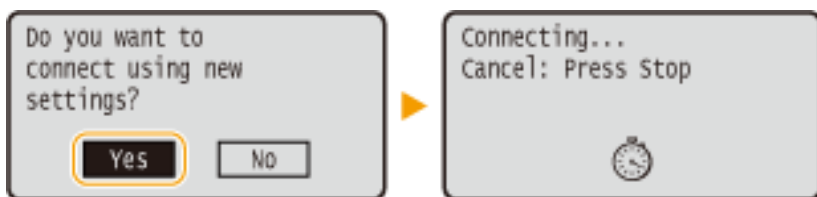
20. 選擇無線區域網路路由器，然後按「OK」
Select a wireless LAN router, and click <OK>



21. 使用數字鍵輸入網路鍵值，選擇「套用」，然後按「OK」
Enter the network key using the numeric keys, select <Apply>, and click <OK>

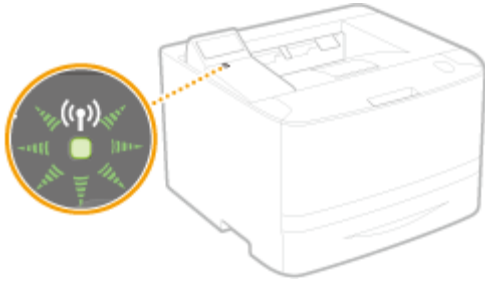


22. 選擇「是」，然後按「OK」
Select <Yes>, and click <OK>



23. 偵測到無線路由器時，Wi-Fi 指示燈會閃爍

Check that the Wi-Fi indicator is blinking on the operation panel, the Wi-Fi indicator blinks when a wireless router is detected



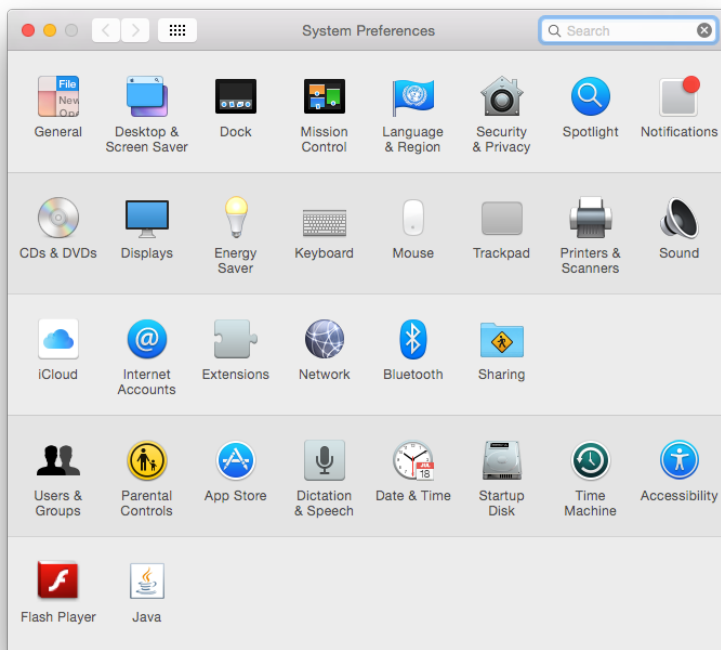
24. 設定完成時，會顯示以下畫面，約 2 秒後 Wi-Fi 指示燈隨即亮起

When the setup is completed, the screen below is displayed, and approximately 2 seconds later, the Wi-Fi indicator lights up

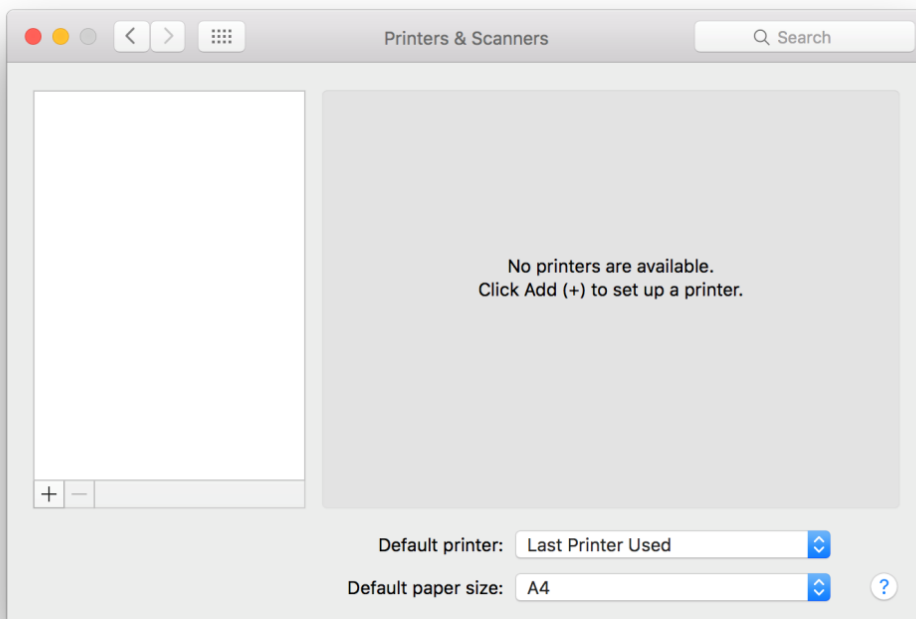


25. 完成印表機上的網絡設後，按一下電腦左上角 < Apple > 圖案，選擇 <系統偏好設定>，再選擇 <印表機和掃描器>

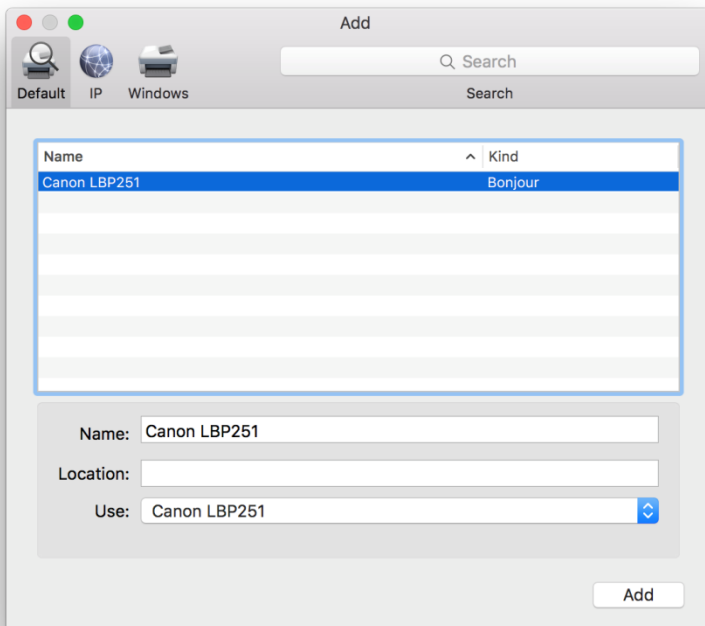
After finished the network setup on the printer, please click the top left corner of the computer < Apple > icon, click <System Preferences>, and then click <Printers and Scanners>



26. 於 [列印和掃描器 (Printers & Scanners)] 視窗，按一下「+」按鈕加入印表機
In the [Printers & Scanners] window, click the "+" button to register the printer



27. 名稱選擇「Canon LBP251」，種類「Bonjour」，確認「使用 (Use)」為「Canon LBP251」，然後按「加入 (Add)」
Choose "Name" as "Canon LBP251", confirm "Kind" as "Bonjour" and "Use" is "Canon LBP251", and then click "Add"



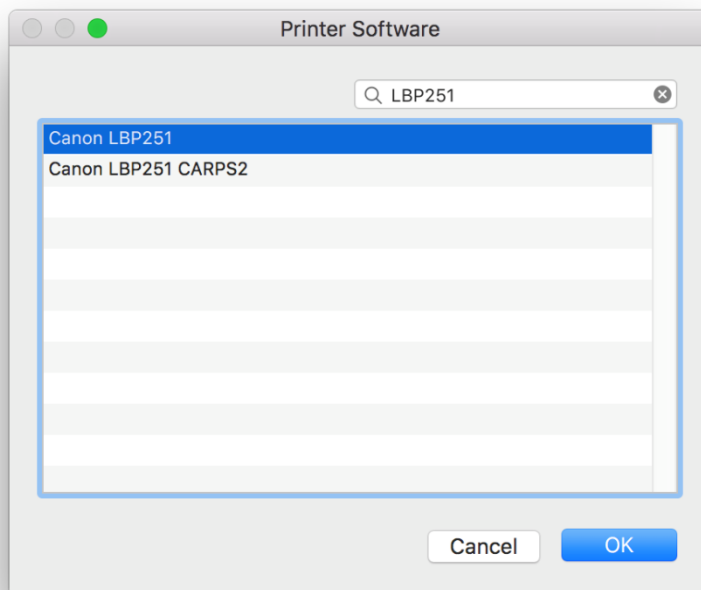
*** 如「使用 (Use)」不是「Canon LBP251」，請按以下步驟設定***

*** If “Use” is not “Canon LBP251”, please refer to the steps below

- a) 請如下圖打開「使用 (Use)」的選單，選擇 " Select Software "
- Please open “Use”, and then choose “Select Software”

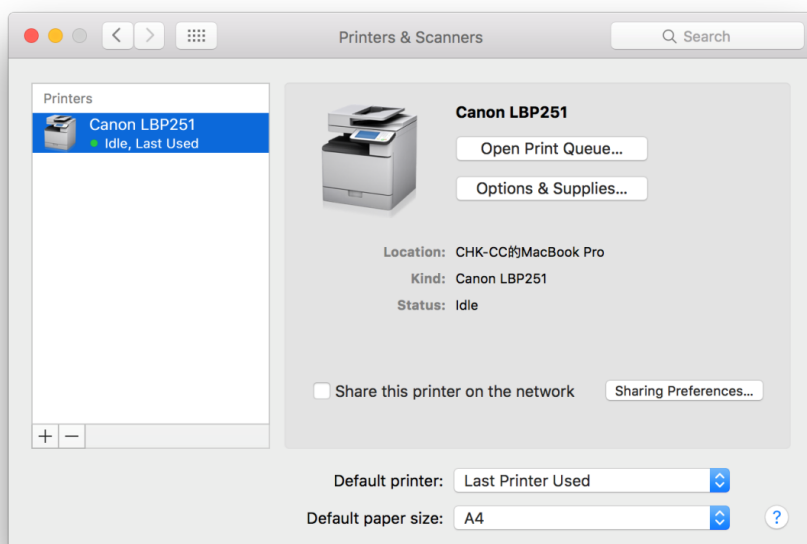


- b) 輸入LBP251以搜尋「Canon LBP251」
- Enter “LBP251”, and then choose “Canon LBP251”



28. 新增印表機完成，驅動程式安裝完畢

After the printer is added, driver installation is completed



<完>

<END>