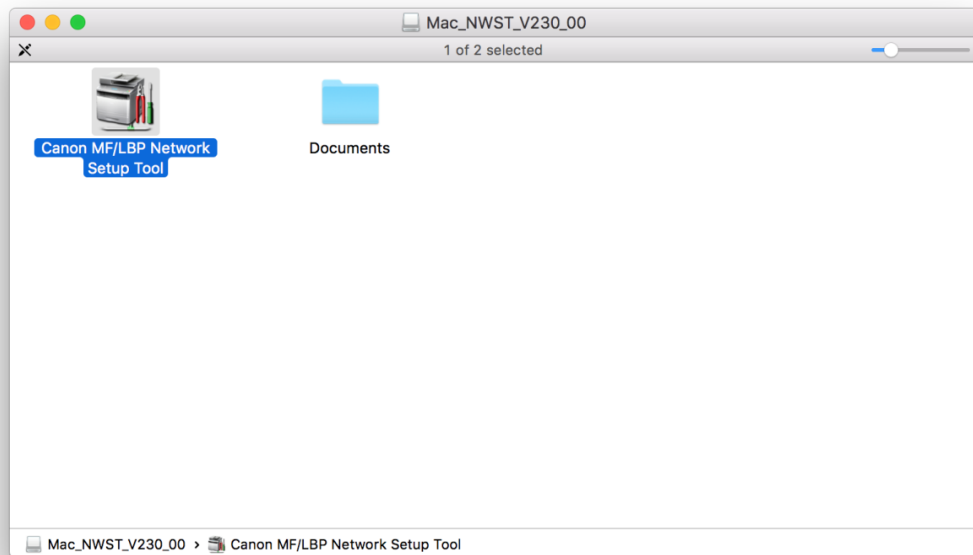
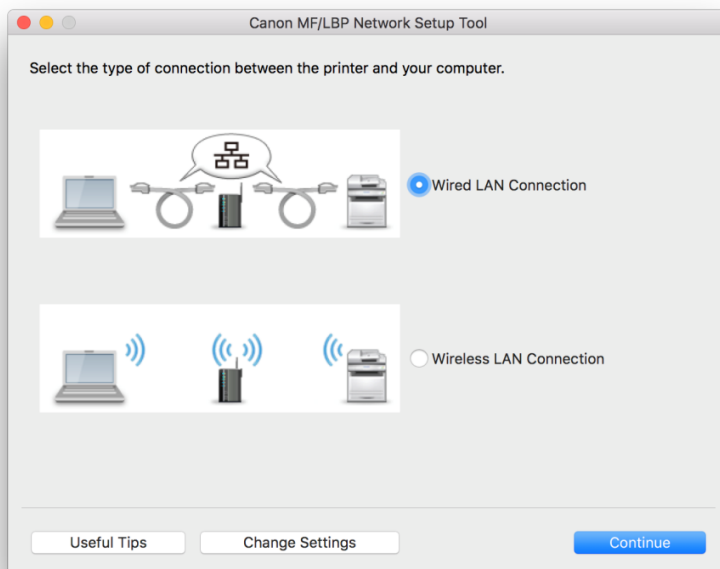


在MAC OSX以LAN接駁安裝LBP151dw驅動程式步驟 (以OSX 10.11作示範)  
LBP151dw printer driver Installation Guide for MAC OSX via LAN (OSX 10.11 as example)

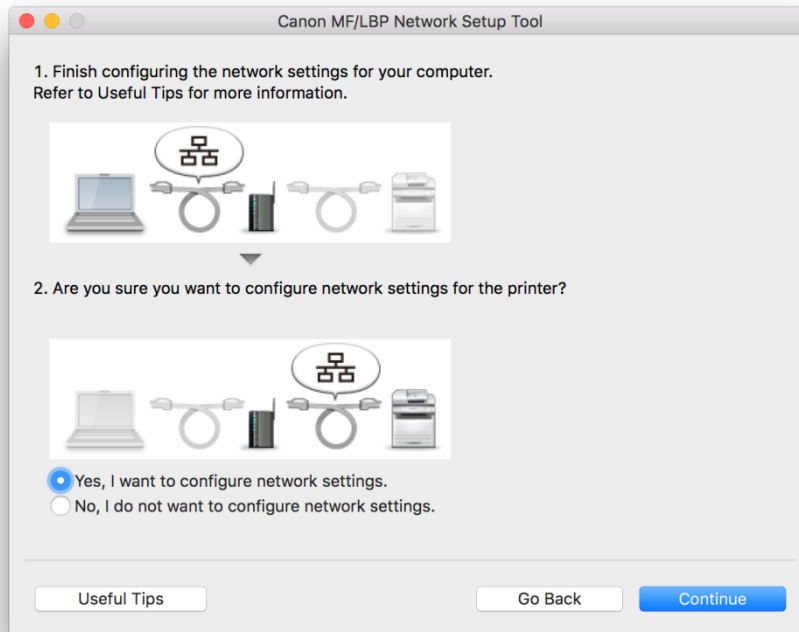
1. 到佳能網站<http://support-hk.canon-asia.com/>，選擇相關的印表機型號及下載印表機的網絡設定工具  
Please visit <http://support-hk.canon-asia.com/> , select related printer model, and then download the network setup tool of the printer
2. 開啟「Canon MF/LBP Network Setup Tool」  
Open “Canon MF/LBP Network Setup Tool”



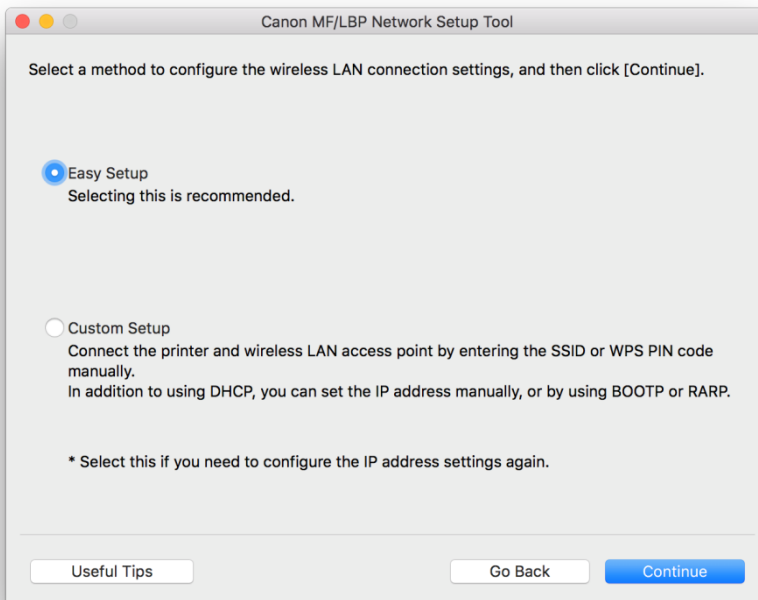
3. 選擇「Wired LAN Connection」  
Choose “Wired LAN Connection”



4. 選擇「Yes, I want to configure network settings」，按「Continue」  
Choose “Yes, I want to configure network settings”, and then click “Continue”

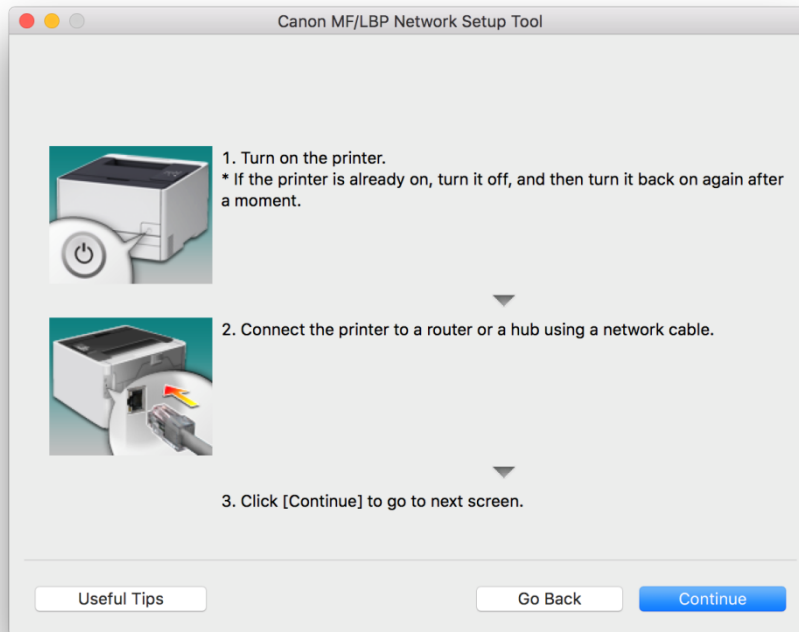


5. 選擇「Easy Setup」，按「Continue」  
Choose “Easy Setup”, and then click “Continue”



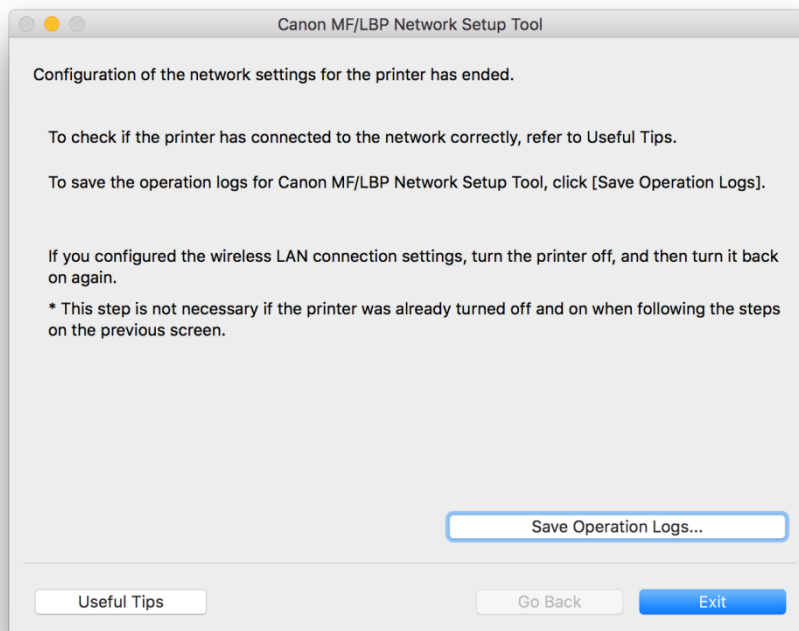
6. 使用網絡線連接印表機和路由器，開啟印表機後按「Continue」

Please connect the printer to the router using a LAN cable, turn on printer, and then click “Continue”

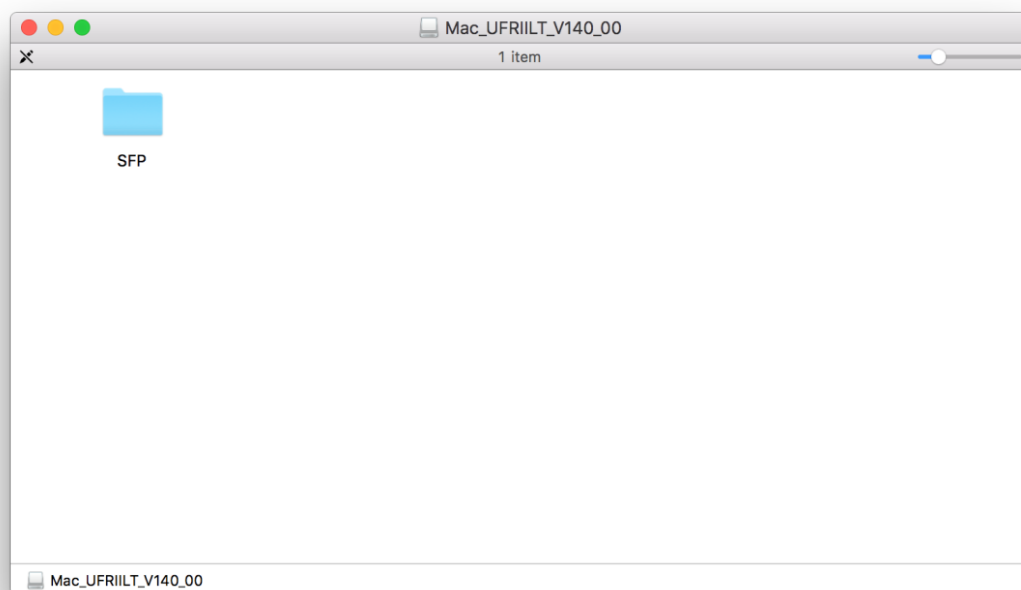


7. 按「Exit」離開網路設定工具

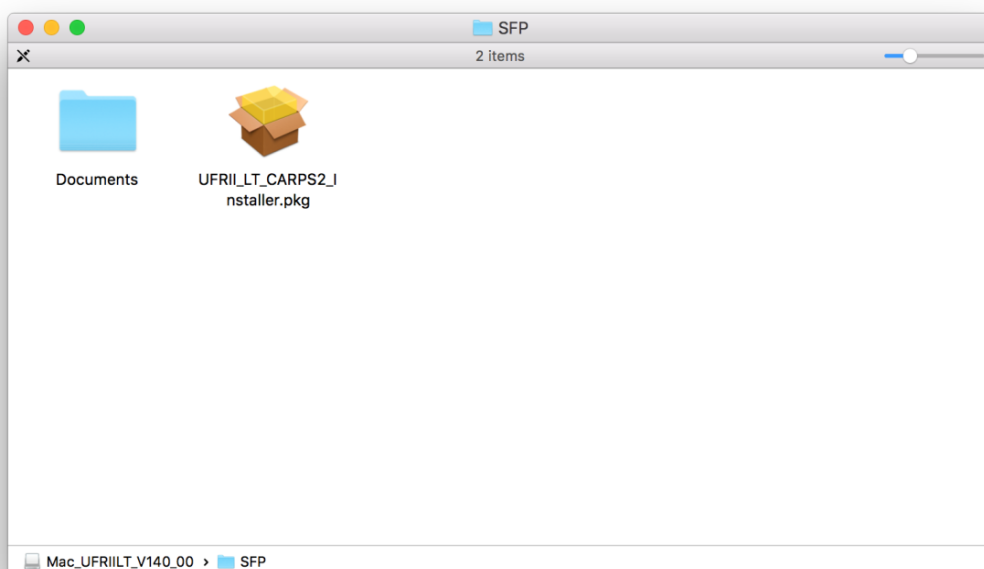
Click “Exit” to exit the Canon MF/LBP Network Setup Tool



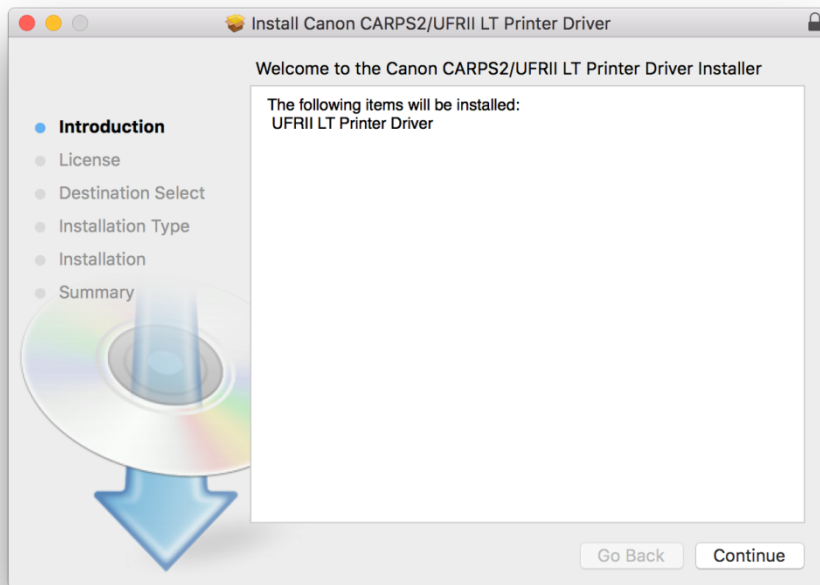
8. 到佳能網站<http://support-hk.canon-asia.com/>，選擇相關的印表機型號及下載印表機的驅動程式  
Please visit <http://support-hk.canon-asia.com/> , select related printer model, and then download the printer driver
9. 開啟下載檔案「UFR II LT Printer Driver」，進入「SFP」文件夾  
Open “UFR II LT Printer Driver” folder, and then click “SFP”



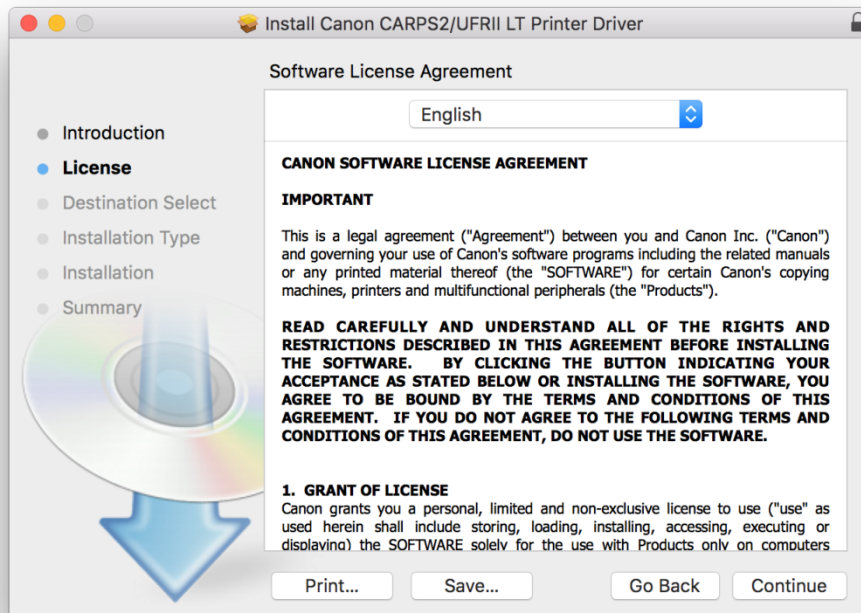
10. 開啟“UFR II LT\_\*\*\*.pkg”文件開始安裝印表機驅動程式  
Open “UFR II LT\_\*\*\*.pkg” folder to start the printer driver installation



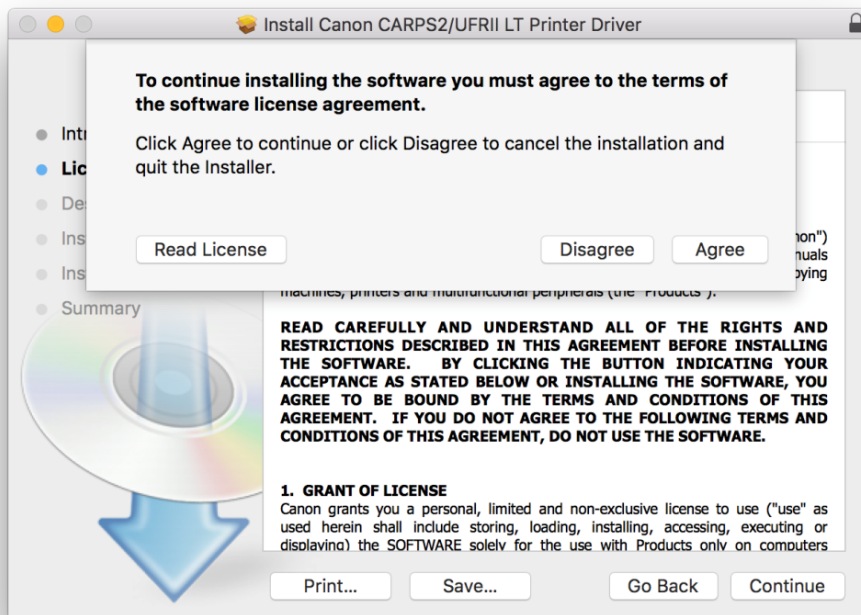
11. 按「Continue」  
Click “Continue”



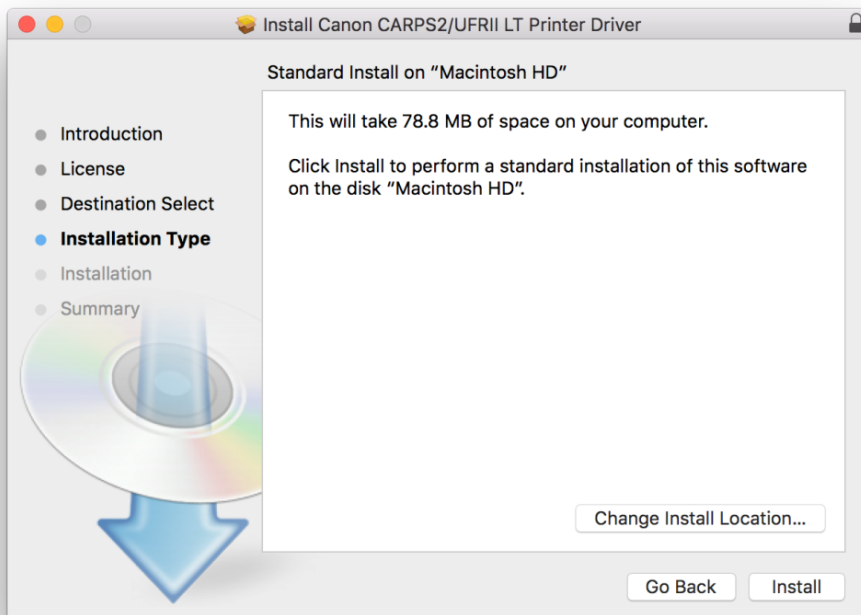
12. 按「Continue」  
Click “Continue”



13. 按「Agree」  
Click “Agree”

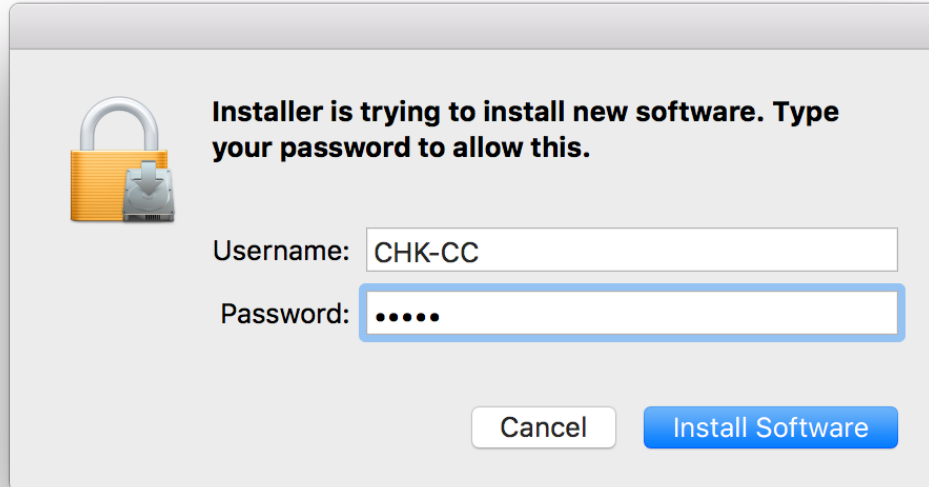


14. 按「Install」  
Click “Install”

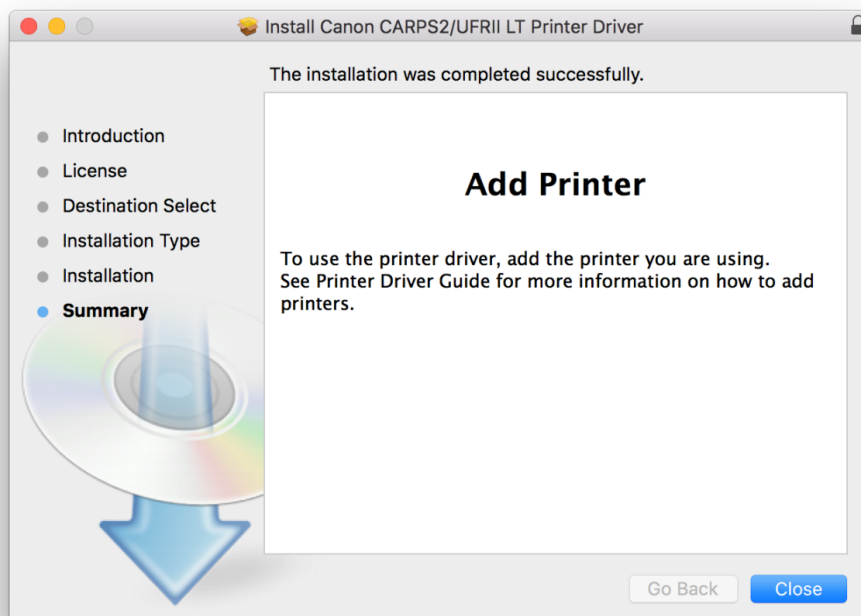



15. 輸入電腦登入名稱及密碼（如出現以下畫面）


Enter the login username and password of the computer (If this screen is shown below)



16. 按「Close」  
Click "Close"

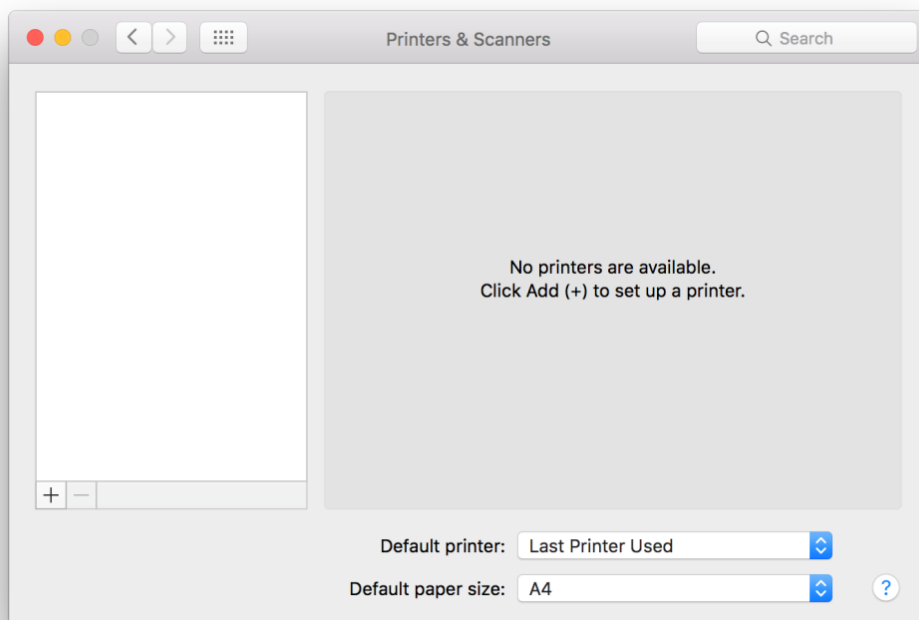


17. 完成安裝驅動程式後需新增印表機，按一下電腦左上角 <  > 圖案，選擇 <系統偏好設定>，再選擇 <印表機和掃描器>

After finished the driver installation, please click the top left corner of the computer <  > icon, click <System Preferences>, and then click <Printers and Scanners>

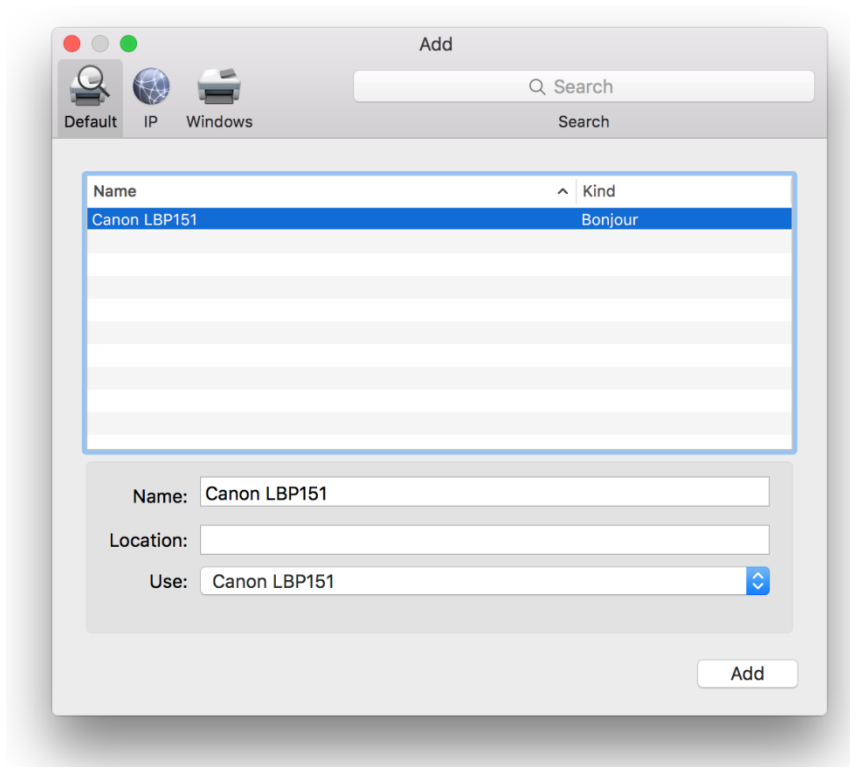


18. 於 [列印和掃描器 (Printers& Scanners)] 視窗，按一下「+」按鈕加入印表機  
In the [Printers & Scanners] window, click the "+" button to register the printer





19. 名稱選擇「Canon LBP151」，種類「Bonjour」，確認「使用（Use）」為「Canon LBP151」，然後按「加入（Add）」
- Choose “Name” as “Canon LBP151”, confirm “Kind” as “Bonjour” and “Use” is “Canon LBP151”, and then click “Add”



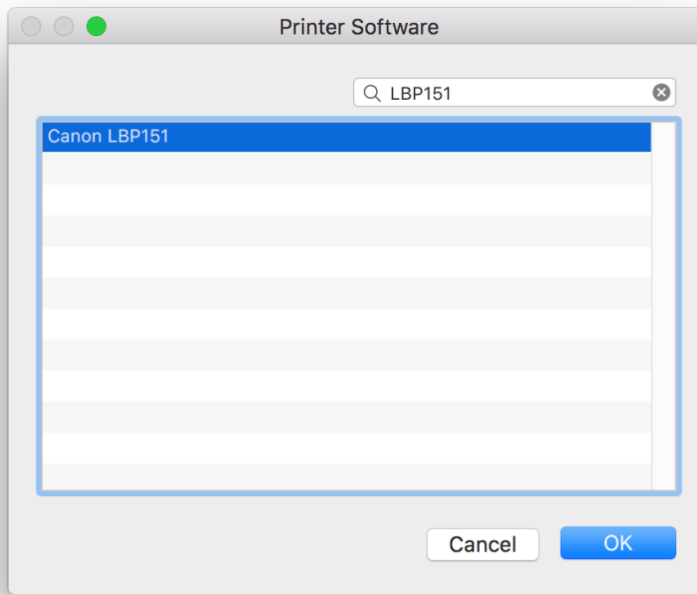
\*\*\* 如「使用（Use）」不是「Canon LBP151」，請按以下步驟設定\*\*\*

\*\*\* If “Use” is not “Canon LBP151”, please refer to the steps below

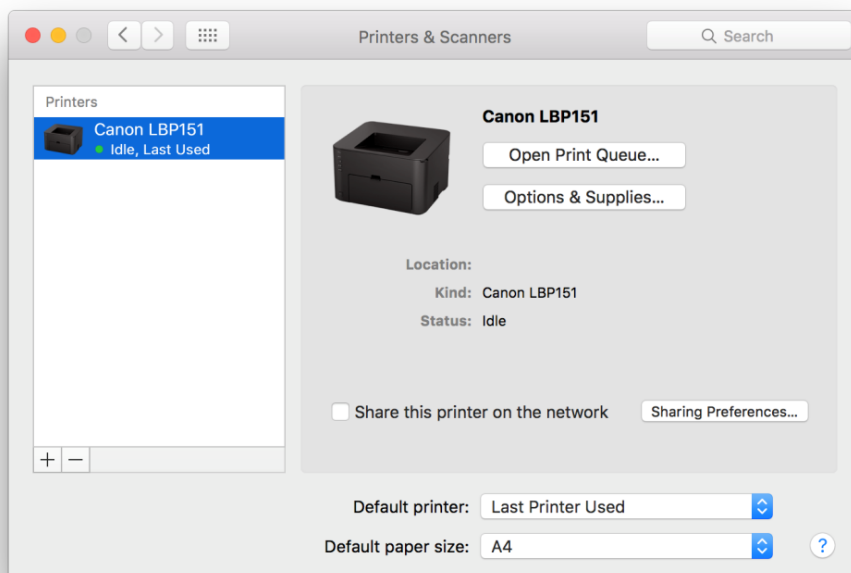
- a) 請如下圖打開「使用（Use）」的選單，選擇“Select Software ”
- Please open “Use”, and then choose “Select Software”



- b) 輸入LBP151以搜尋「Canon LBP151」  
Enter “LBP151”, and then choose “Canon LBP151”



20. 新增印表機完成，驅動程式安裝完畢  
After the printer is added, driver installation is completed



<完>

<End>