

LBP9100Cdn在Mac OSX 透過LAN連線連接印表機之驅動程式步驟
The Driver installation procedure for LBP9100Cdn (Via LAN) in MAC OSX

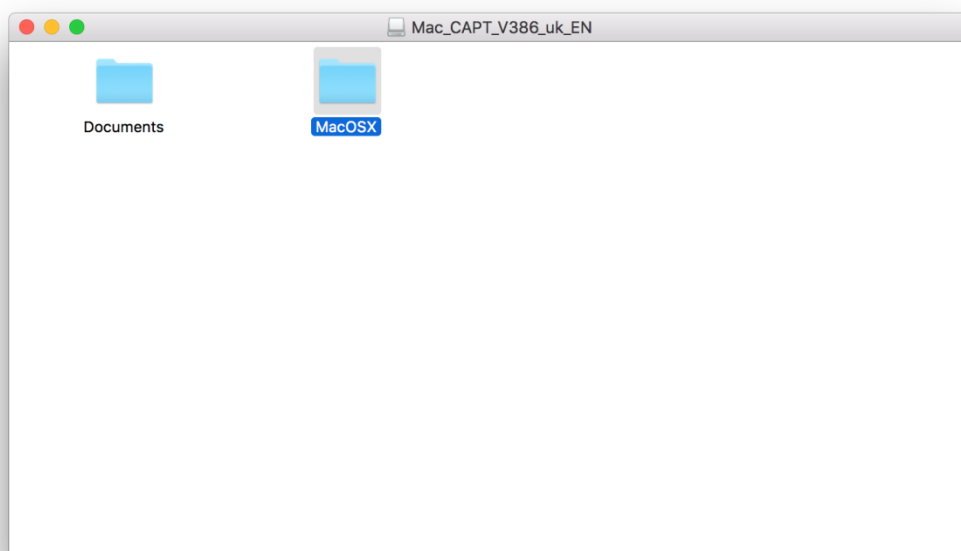
****注意: 安裝驅動程式前請勿接駁 USB 線，以免系統發生錯誤****

****Caution: Do not plug –in the USB cable with the printer and the Computer before the installation****

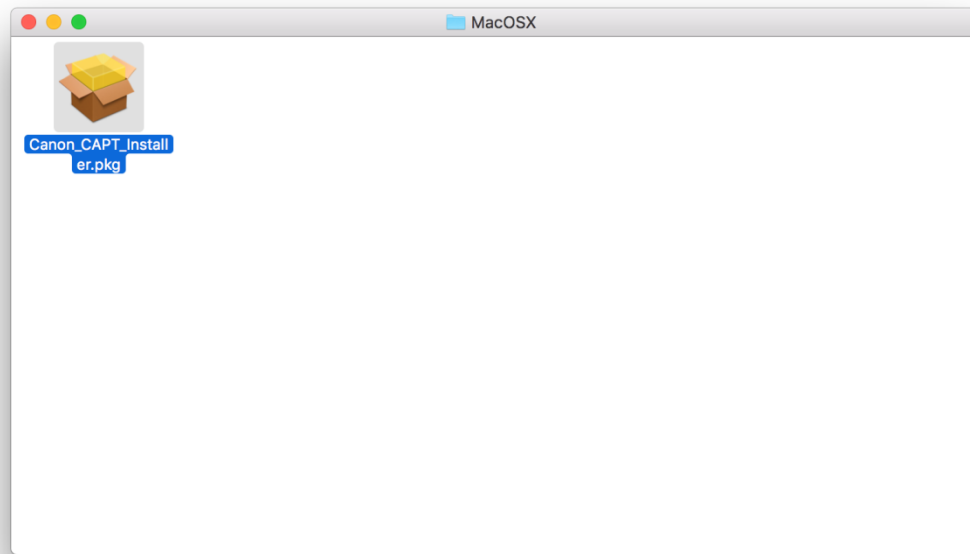
下載及安裝步驟

(Download and Driver Installation Procedure)

1. 到佳能網站 <http://support-hk.canon-asia.com/>，選擇相關的印表機型號及下載印表機的Canon MF/LBP Network Setup Tool
(Go to: <http://support-hk.canon-asia.com/>, select related printer model, then download the Canon MF/LBP Network Setup Tool)
2. 開啟下載檔案「Mac_CAPT_V***_uk_EN」，進入「MACOSX」文件夾 (Open “Mac CAPT V***_uk_EN”, then open “MacOSX”)



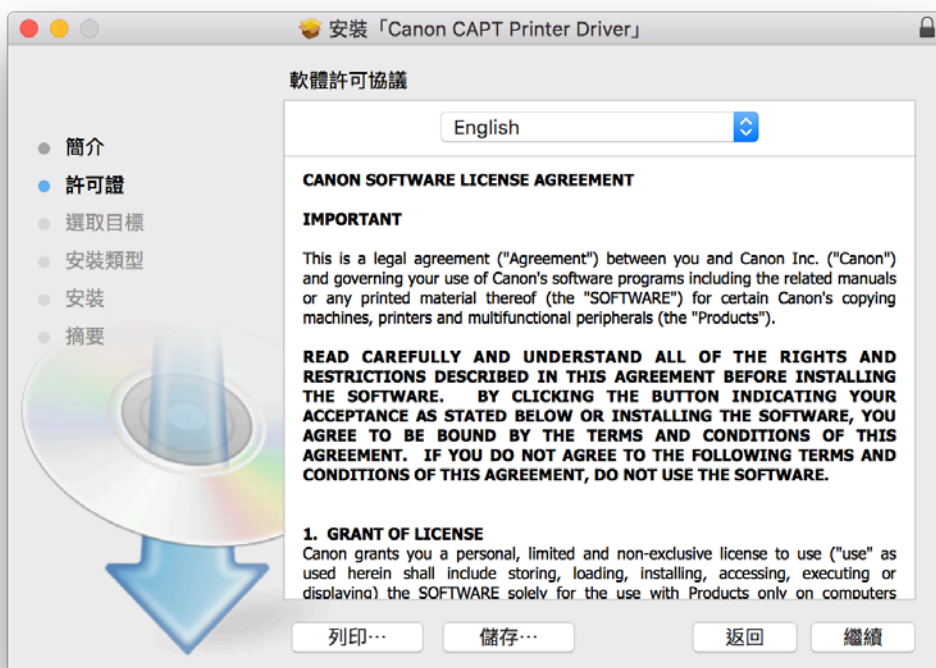
3. 開啓“Canon_CAPT_Installer.pkg”文件開始安裝設定(Double Click / Open “Canon_CAPT_Installer.pkg”)



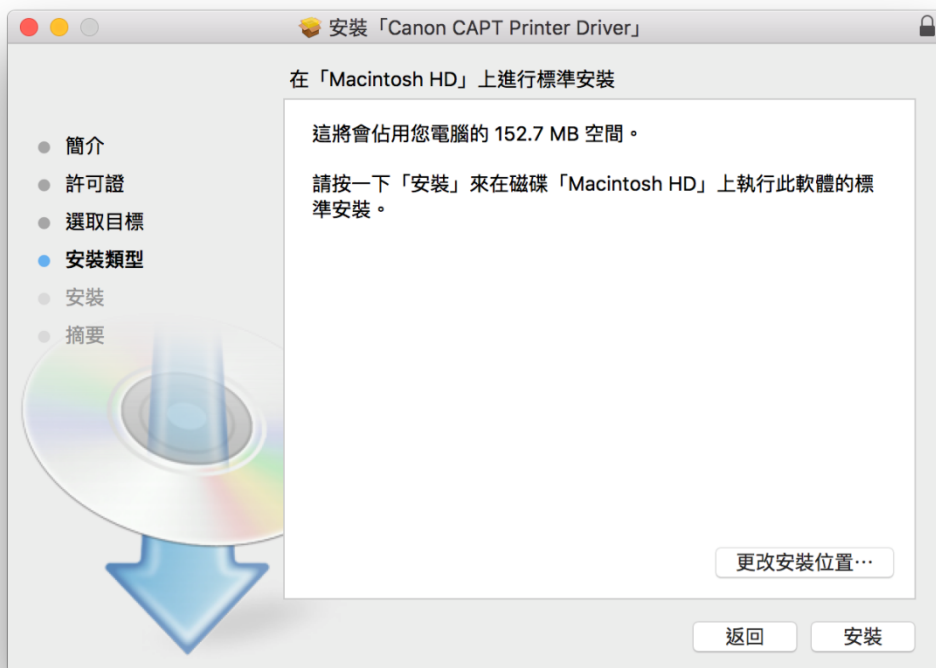
4. 按「繼續」(Click “Continue”)



5. 按「繼續」 (Click "Continue")



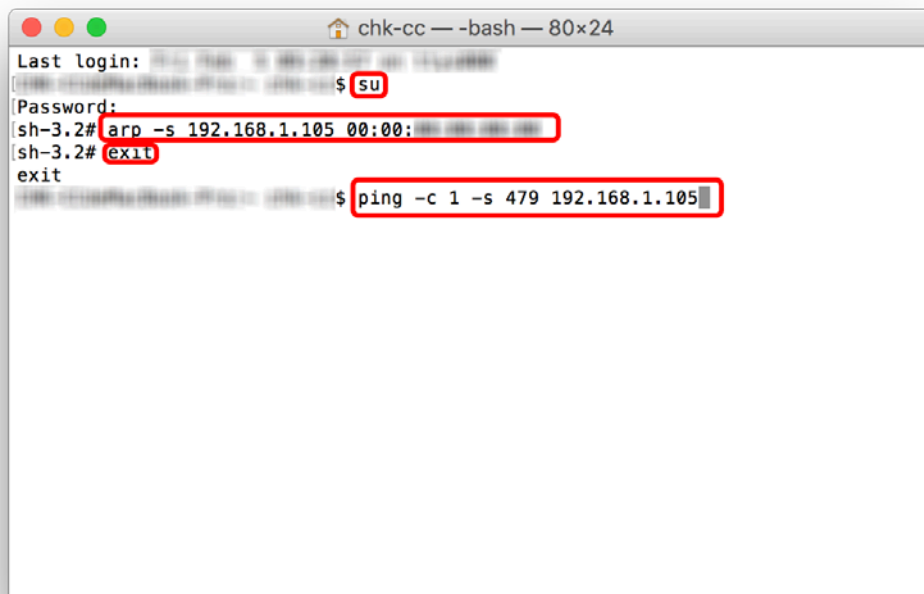
6. 按「安裝」 (Click "Install")



9. 開啟終端機視窗後:
 - 9.1. 輸入 su (需輸入 root 密碼)
 - 9.2. 輸入 "arp -s <IP 位址> <MAC 位址>"
e.g. arp -s 192.168.1.105 00:00:12:34:56:78
 - 9.3 輸入 exit 完成設定
 - 9.4 完成設定後可輸入 "ping -c 1 -s 479 <在 9.2 步驟設定的 IP 位址>" 測試連線
e.g. ping -c 1 -s 479 192.168.1.105
(如測試失敗 (e.g. 100.0% packet loss) 需重新設定)
- *IP 位址設定請參考有關路由器/伺服器網絡資訊

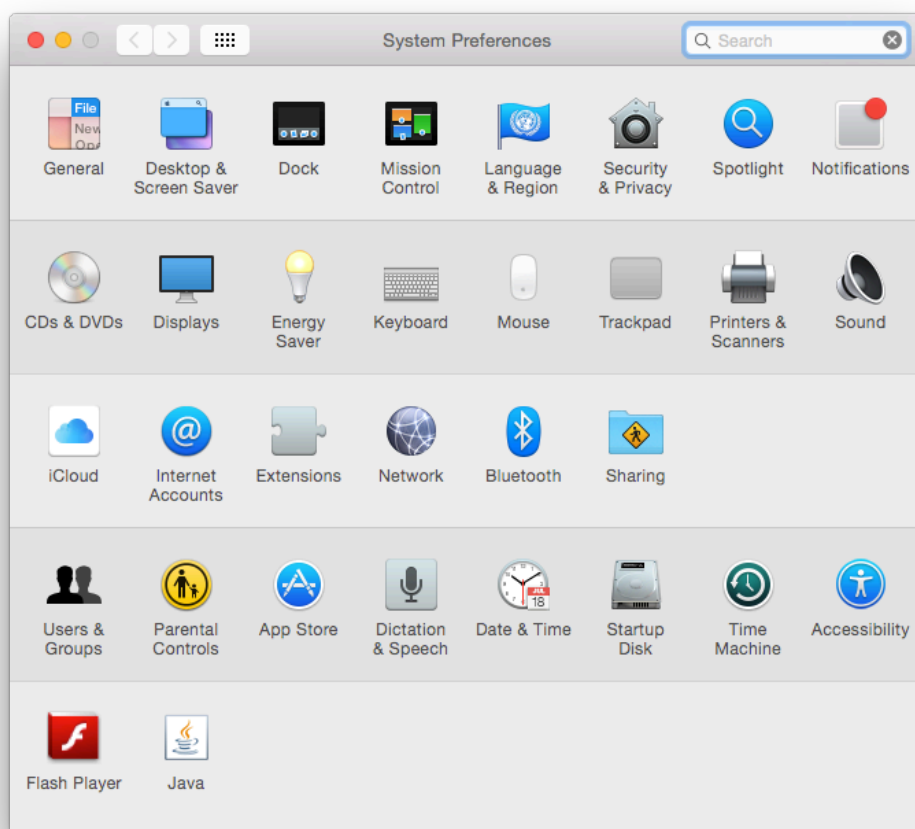
After Terminal window opened:

- 9.1. Input su (need to input root password)
 - 9.2. Input command "arp -s <IP Address> <MAC Address>"
e.g. arp -s 192.168.1.105 00:00:12:34:56:78
 - 9.3. Input "exit" after finished setup
 - 9.4. After finished setup, please input command "ping -c 1 -s 479 <specify the same IP Address as the one used in step 9.2>" for test ping
e.g. ping -c 1 -s 479 192.168.1.105
(If test ping failed (e.g. 100.0% packet loss), please redo setup)
- *May check router/Server information for IP address setting

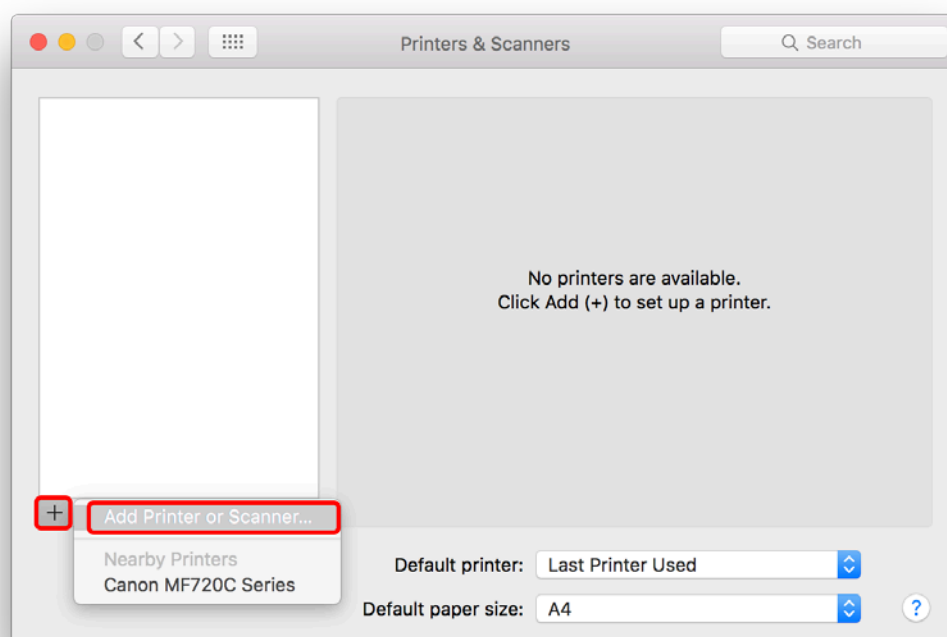


```
chk-cc -- -bash -- 80x24
Last login: 2023-08-10 10:10:10
[Password: ] $ su
sh-3.2# arp -s 192.168.1.105 00:00:12:34:56:78
sh-3.2# exit
exit
$ ping -c 1 -s 479 192.168.1.105
```

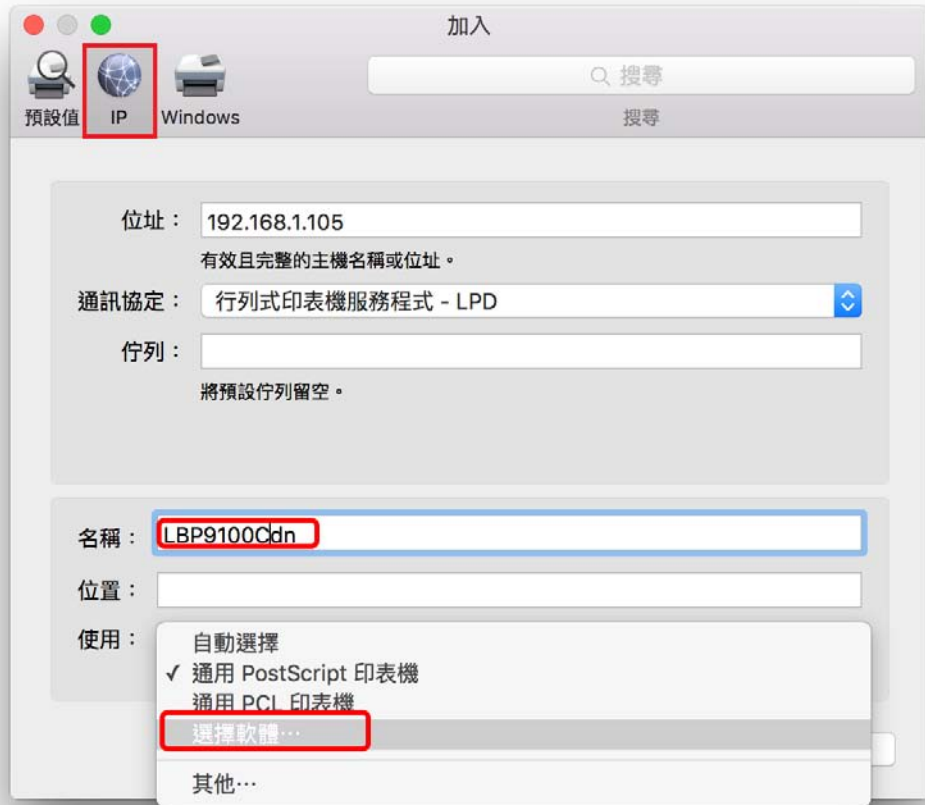
10. 完成安裝驅動程式後需新增印表機。到「系統偏好設定 (System Preference)」，選「印表機與掃描器 (Printers & Scanners)」 (Go to “System Preference”, then open “Printers & Scanners”)



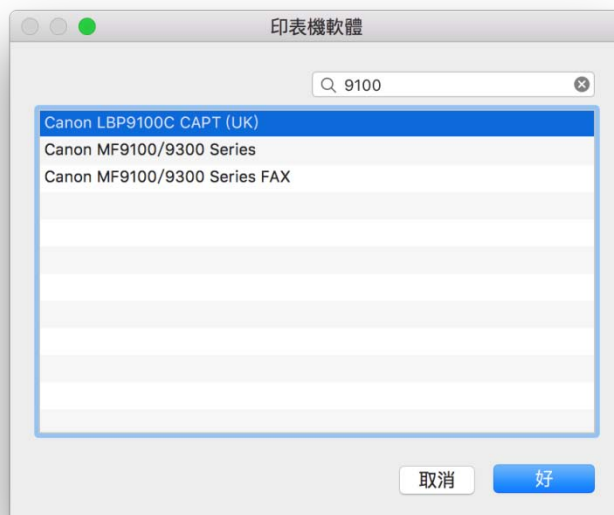
11. 選取左下角「+」按鈕，選「加入印表機或掃描器 (Add Printer or Scanner)」 (Click “+”, then choose “Add Printer or Scanner”)



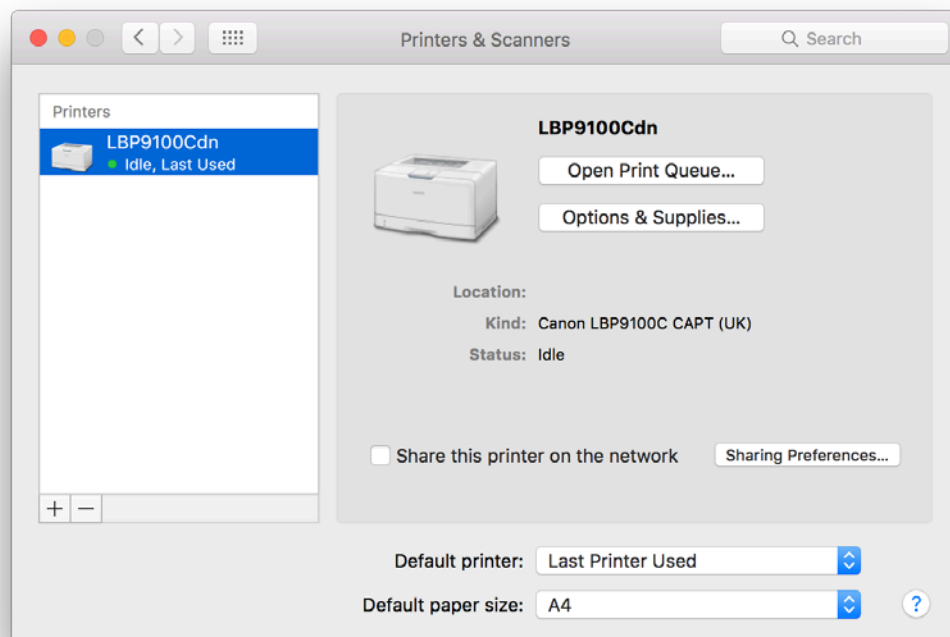
12. 左上角選擇 IP，位址欄輸入在步驟 9.2 設定的 IP 位址，名稱建議可自行更改做 LBP9100Cdn 方便管理，使用欄選取「選擇軟體」
- Choose IP at top left corner, Address column inputs IP address setup at step 9.2, suggest to change name to LBP9100Cdn for easy management. Use chooses Select Software



13. 在印表機軟體中搜尋 Canon LBP9100C CAPT (UK)作驅動程式 (Search "Canon LBP9100C CAPT (UK)" as printer driver)



14. 安裝完成 (Installation complete)



-完-
-End-