

LBP9100Cdn 在 Mac OSX 透過 USB 連線連接印表機之驅動程式步驟
The Driver installation procedure for LBP9100Cdn (Via USB) in MAC OSX

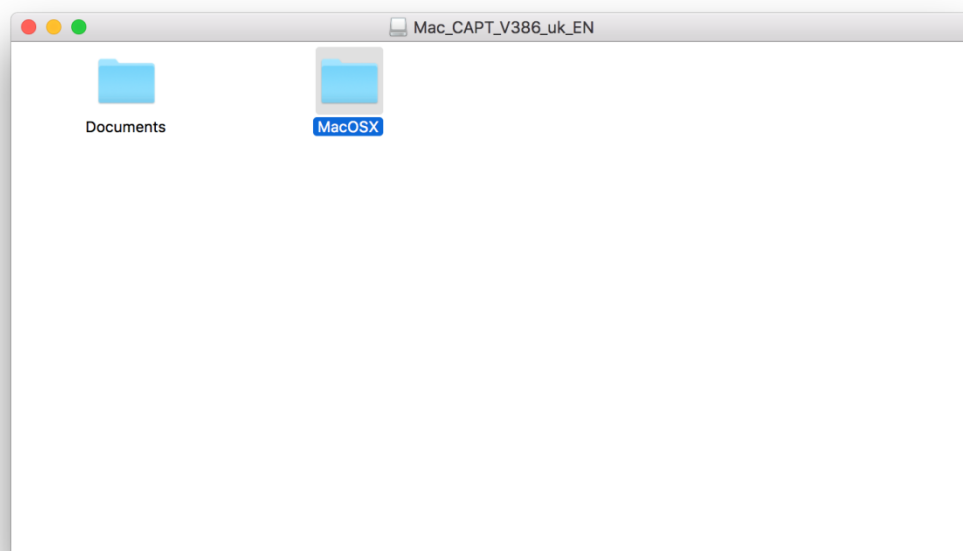
****注意: 安裝驅動程式前請勿接駁 USB 線，以免系統發生錯誤****

****Caution: Do not plug –in the USB cable with the printer and the Computer before the installation****

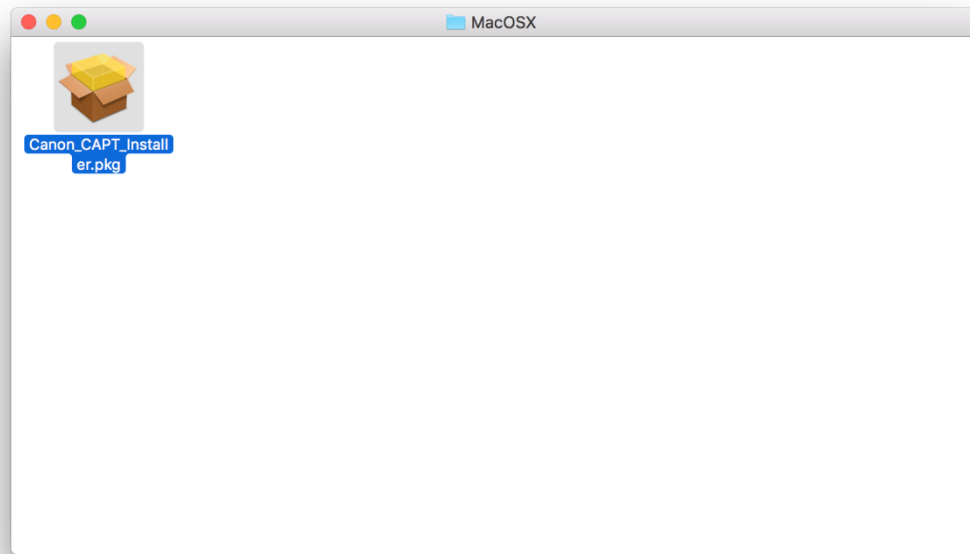
下載及安裝步驟

(Download and Driver Installation Procedure)

1. 到佳能網站 <https://hk.canon/en/support>，選擇相關的印表機型號及下載印表機的驅動程式 – CAPT Printer Driver & Utilities
(Go to: <https://hk.canon/en/support> , select related printer model, then download the Canon MF Driver - CAPT Printer Driver & Utilities)
2. 開啟下載檔案「Mac_CAPT_V***_uk_EN」，進入「MACOSX」文件夾 (Open “Mac CAPT V***_uk_EN”, then open “MacOSX”)



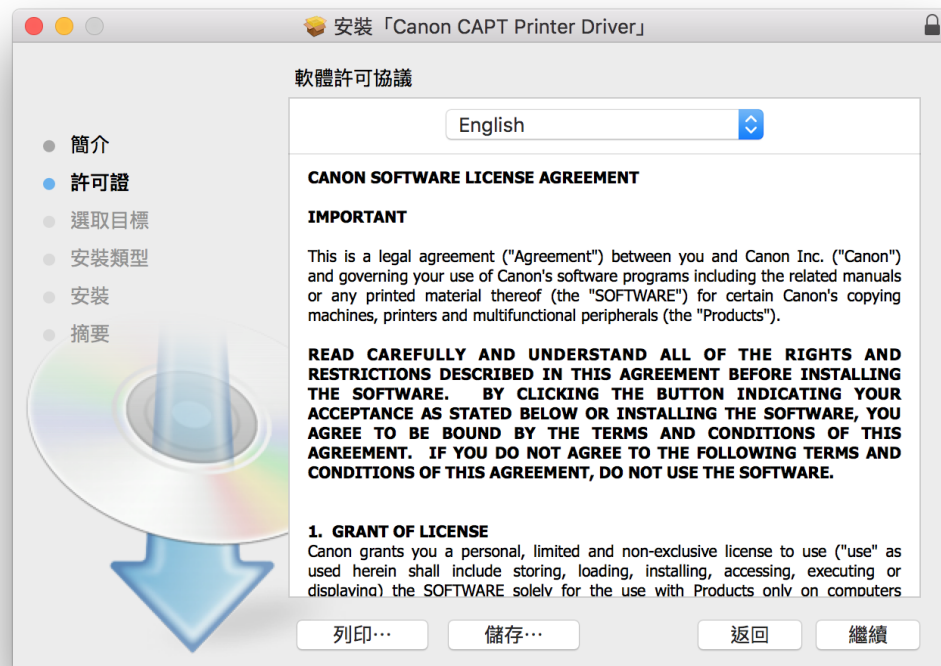
3. 開啟“Canon_CAPT_Installer.pkg”文件開始安裝設定(Double Click / Open “Canon_CAPT_Installer.pkg”)



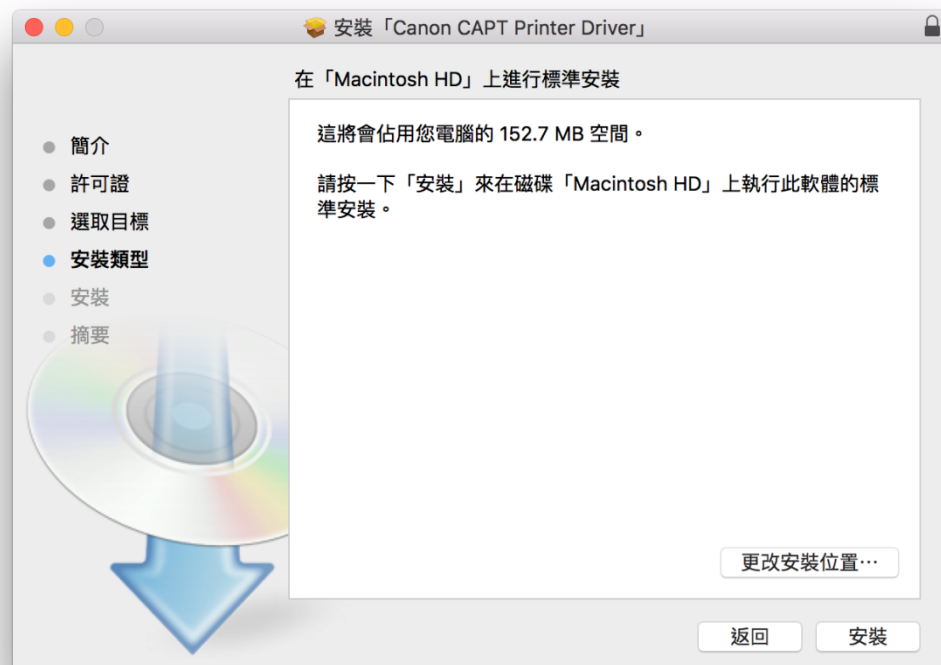
4. 按「繼續」(Click “Continue”)



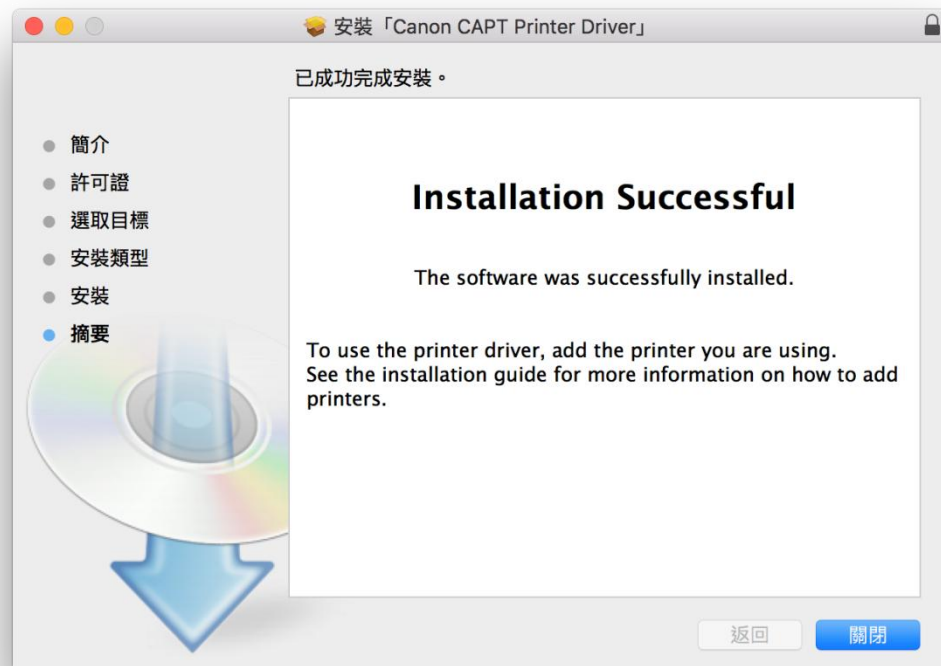
5. 按「繼續」(Click "Continue")



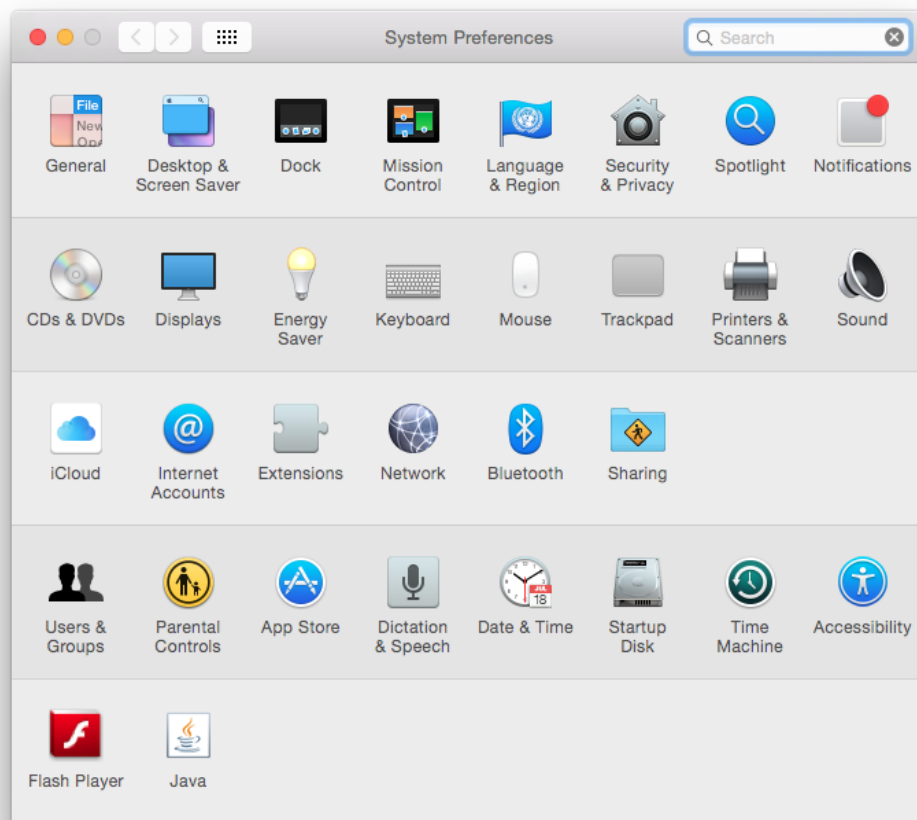
6. 按「安裝」(Click "Install")



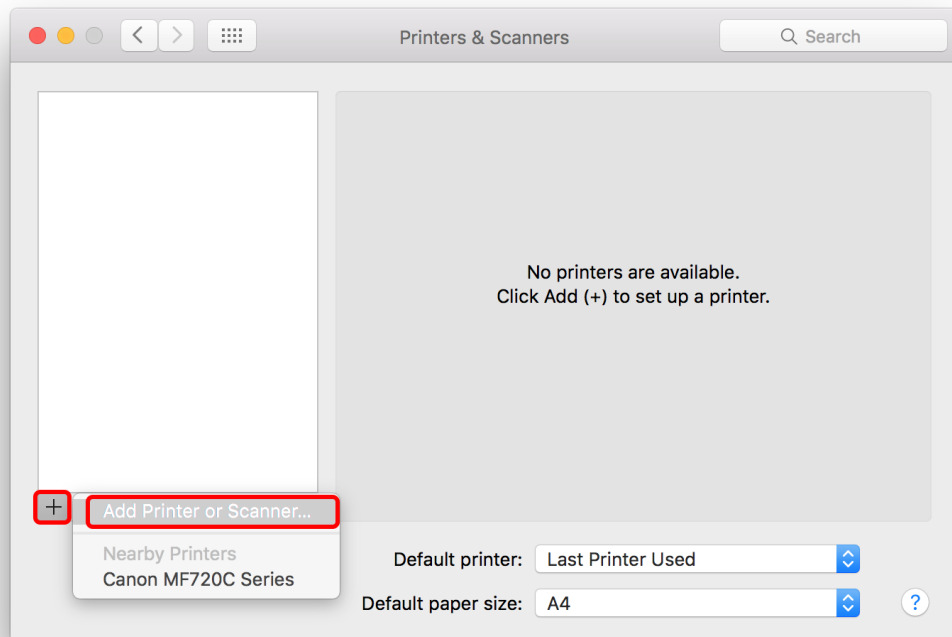
7. 安裝完成後按「關閉」(Click “Close” after installation successful)



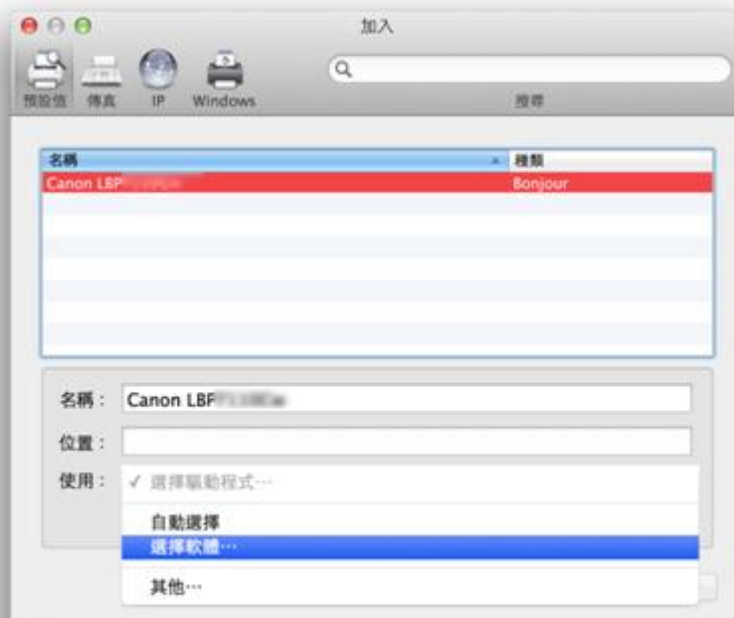
8. 完成安裝驅動程式後需新增印表機。到「系統偏好設定 (System Preference)」，選「印表機與掃描器 (Printers & Scanners)」(Go to “System Preference”, then open “Printers & Scanners”)



9. 選取左下角「+」按鈕，選「加入印表機或掃描器（Add Printer or Scanner）」
(Click “+”, then choose “Add Printer or Scanner”)



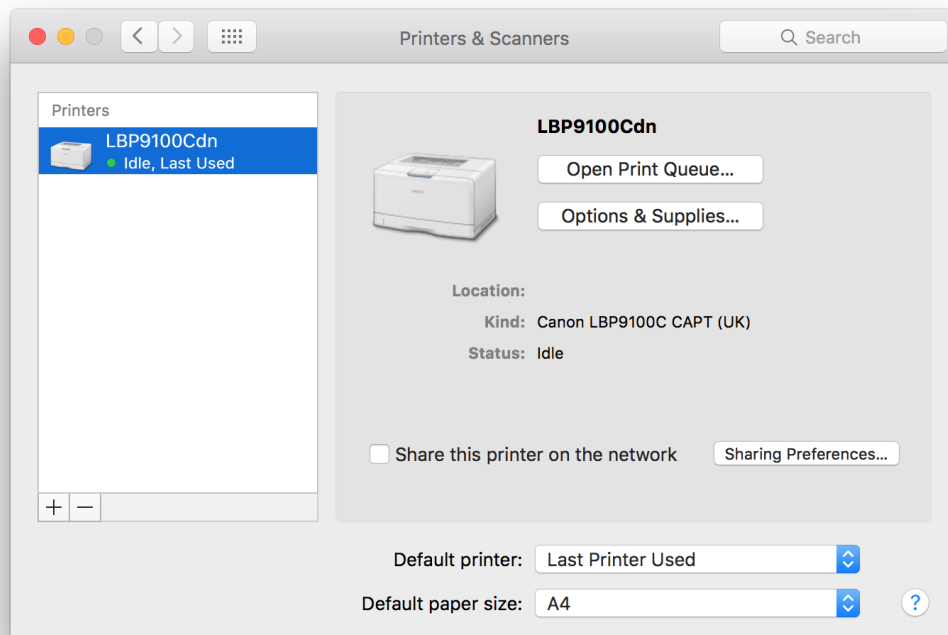
10. 打開「使用（Use）」的選單，選取選擇軟體(Open “Use”, then choose “Select Software”)



11. 在印表機軟體中搜尋 Canon LBP9100C CAPT (UK)作驅動程式 (Search “Canon LBP9100C CAPT (UK)” as printer driver)



12. 安裝完成 (Installation complete)



-完-
-End-