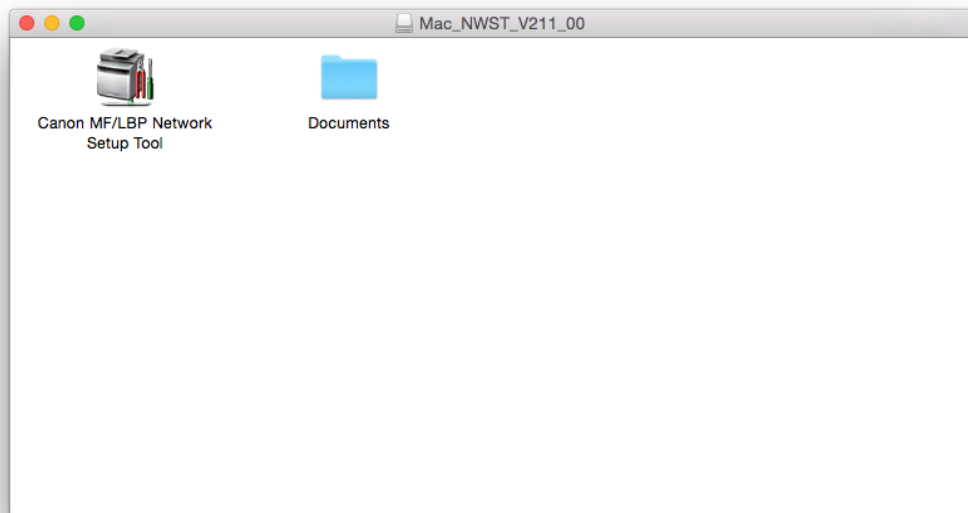


LBP7110Cw以無線LAN連線連接印表機之驅動程式步驟 (以MAC OSX 10.10作示範)
The Driver installation procedure for LBP7110Cw (Via Wi-Fi)(MAC OSX 10.10 as sample)

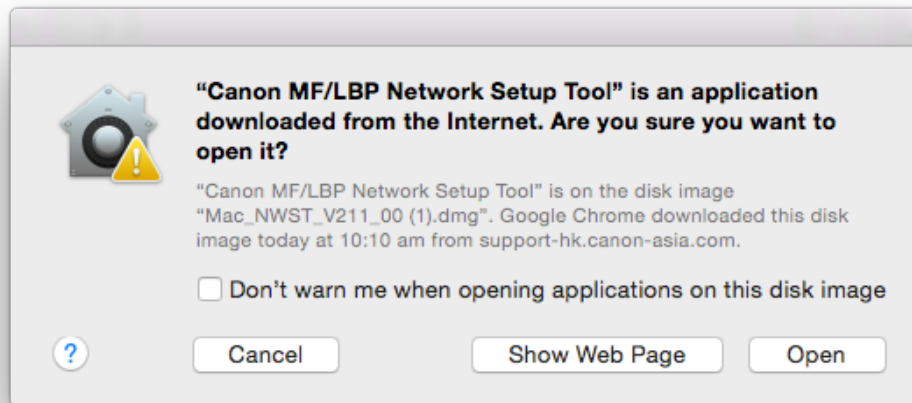
****注意: 安裝驅動程式前請勿接駁USB線，以免系統發生錯誤****
**** Please don't plug the USB cable until the driver asked to do so****

下載及安裝步驟
(Download and Driver Installation Procedure)

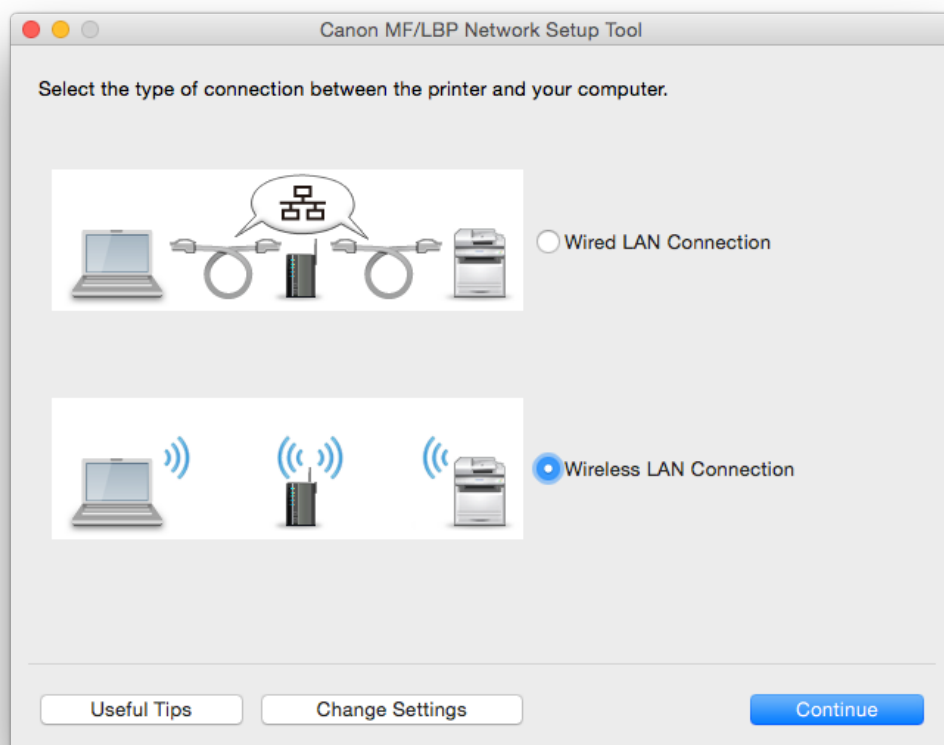
1. 到佳能網站<http://support-hk.canon-asia.com/>，選擇相關的印表機型號及下載印表機的Canon MF/LBP Network Setup Tool
(Go to: <http://support-hk.canon-asia.com/> , select related printer model, then download the Canon MF/LBP Network Setup Tool)
2. 開啟Canon MF/LBP Network Setup Tool (Open “Canon MF/LBP Network Setup Tool”)



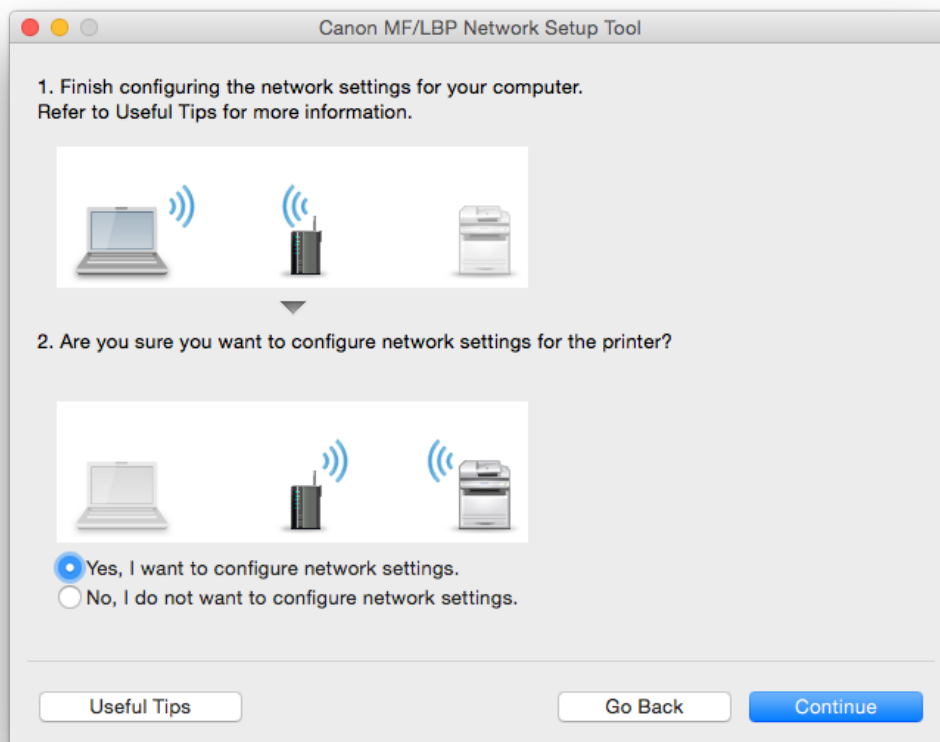
3. 如出現如下畫面，請按「Open」(Choose “Open”)



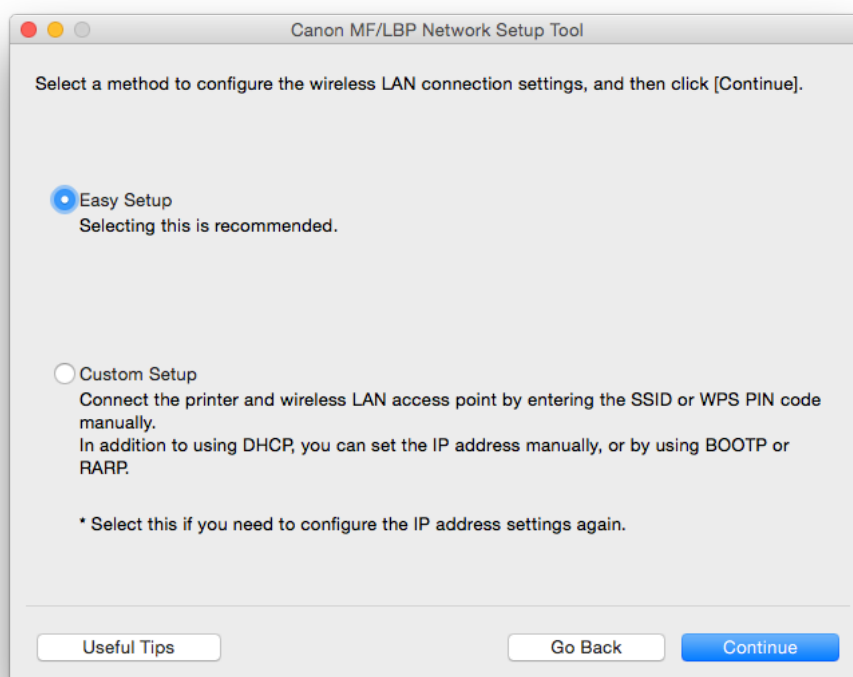
4. 選擇「Wireless LAN Connection」(Choose “Wireless LAN Connection”)



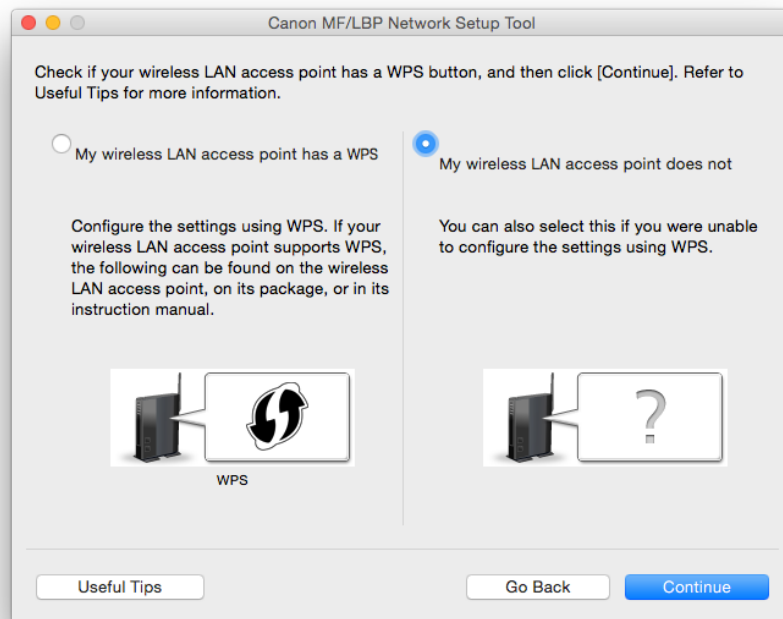
5. 選擇「Yes, I want to configure network settings」 (Choose “Yes, I want to configure network settings”)



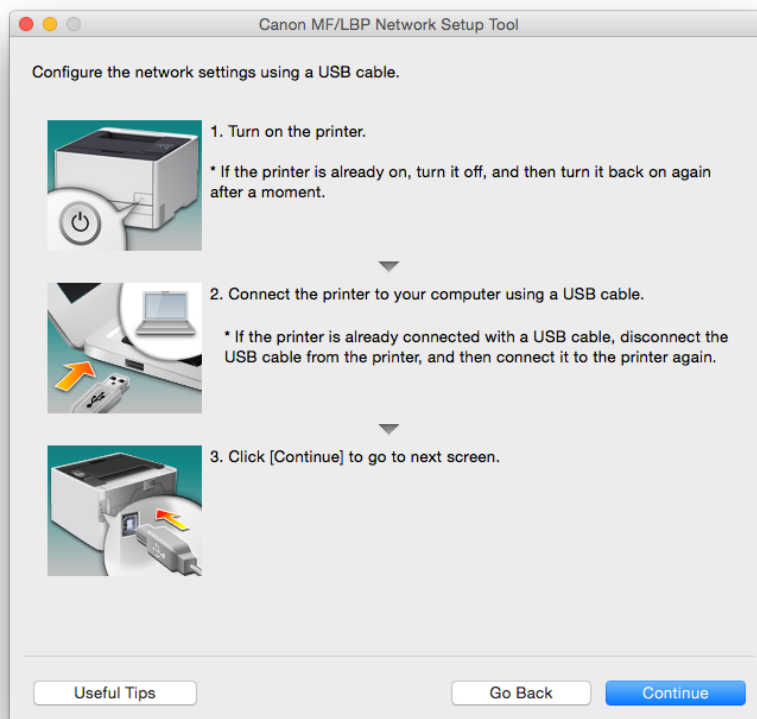
6. 選擇「Easy Setup」 (Choose “Easy Setup”)



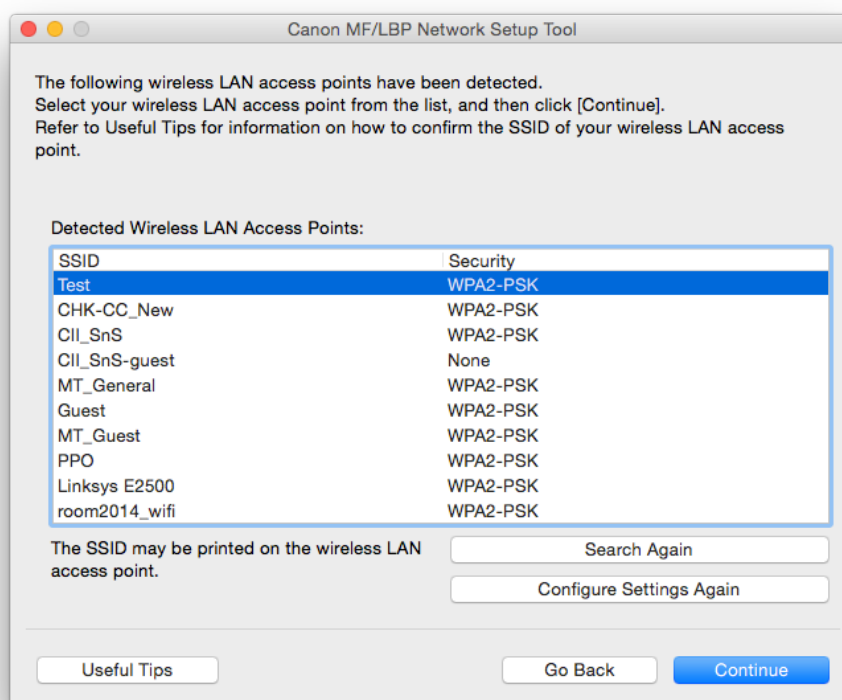
7. 選擇「My wireless LAN access point does not have a WPS button or I cannot find the button」(Choose “My wireless LAN access point does not have a WPS button or I cannot find the button”)



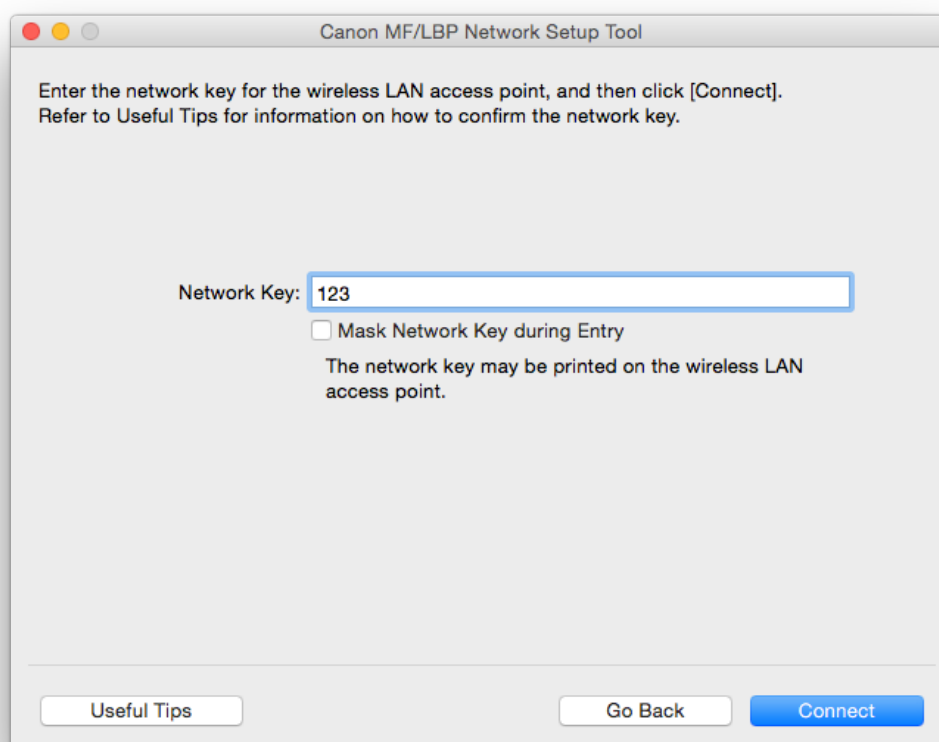
8. 請使用USB電纜線連接印表機和電腦，開啟印表機後按「Continue」(Connect printer and computer with the USB cable, and then turn on the printer)



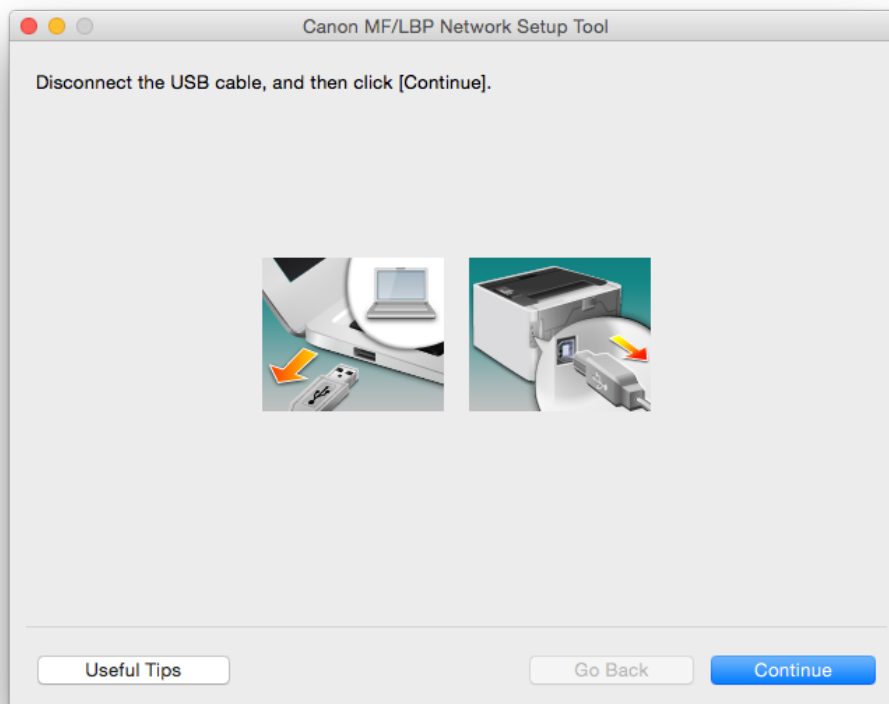
9. 選擇您的網路，按「Continue」(Select your network, then choose “Continue”)



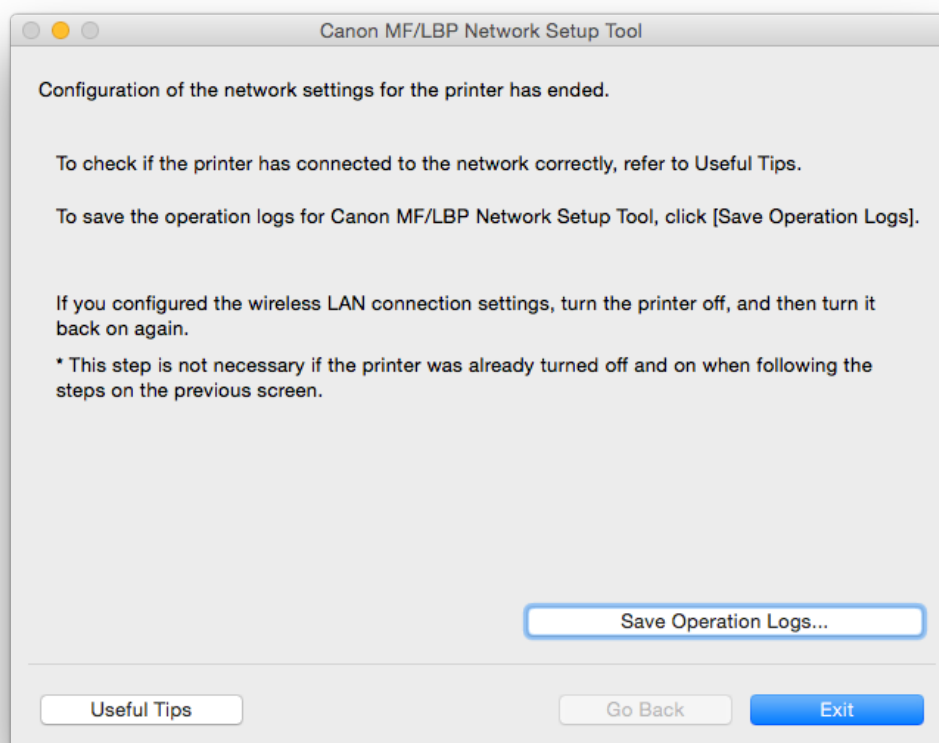
10. 如出現如下畫面，請輸入Wi-Fi 網路金鑰 (Type your Network Key)



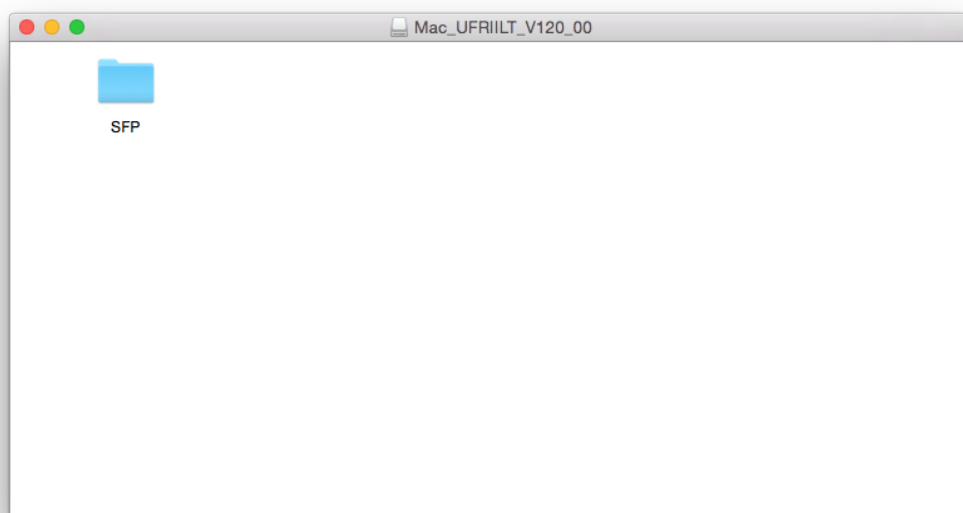
11. 拔取USB電纜線，按「Continue」 (Disconnect your USB cable, then choose “Continue”)



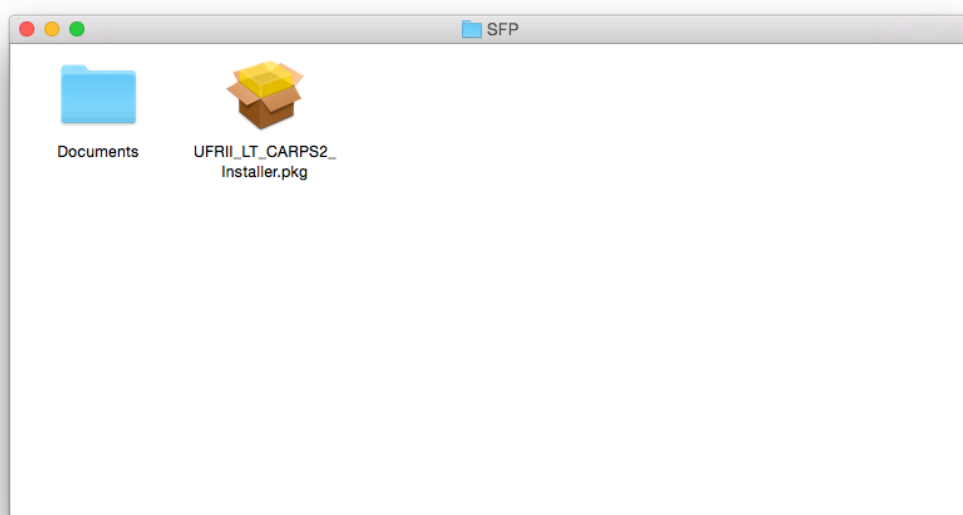
12. 按「Exit」離開網路設定工具 (Choose “Exit” to exit the wizard)



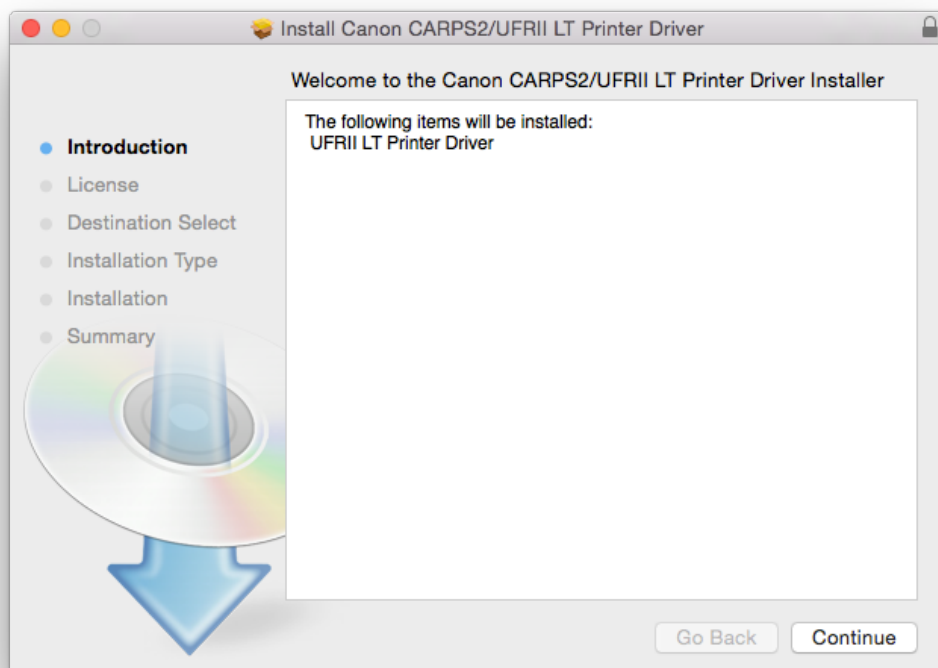
13. 到佳能網站<http://support-hk.canon-asia.com/>，選擇相關的印表機型號及下載印表機的驅動程式
(Go to: <http://support-hk.canon-asia.com/> , select related printer model, then download the printer driver)
14. 開啟下載檔案「UFR11 LT Printer Driver」，進入「SFP」文件夾 (Open “UFR11 LT Printer Driver”, then open “SFP”)



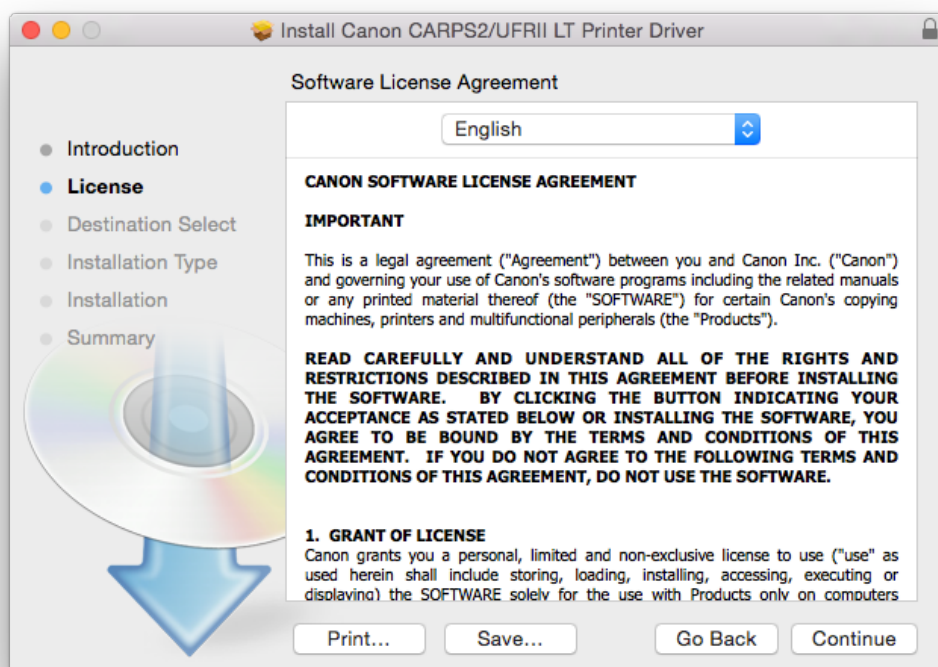
15. 開啟“UFR11_LT_***.pkg”文件開始安裝設定(Double Click / Open “UFR11_LT_***.pkg”)



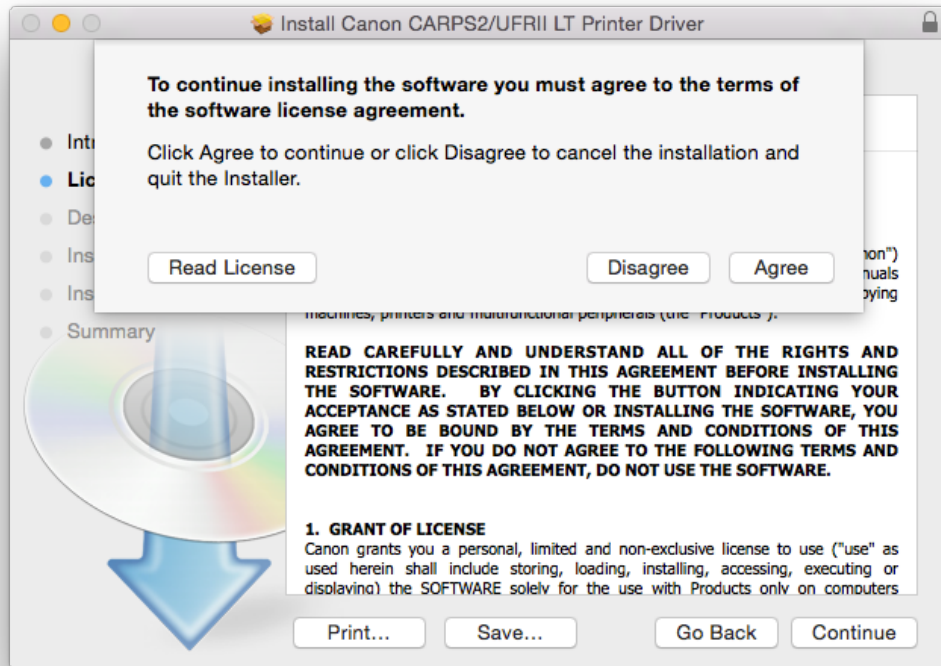
16. 按「Continue」(Choose “Continue”)



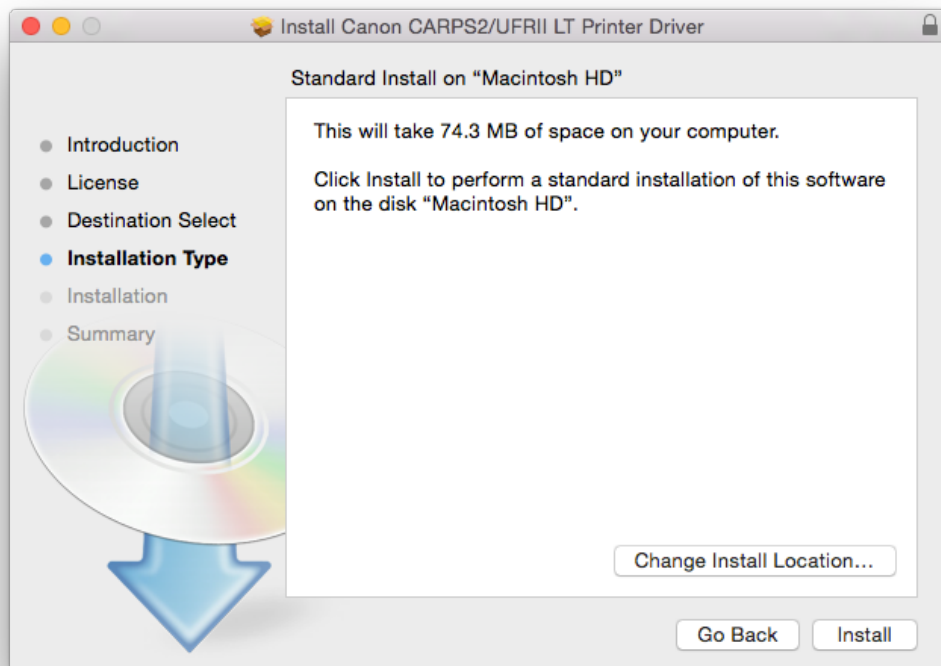
17. 按「Continue」(Choose “Continue”)



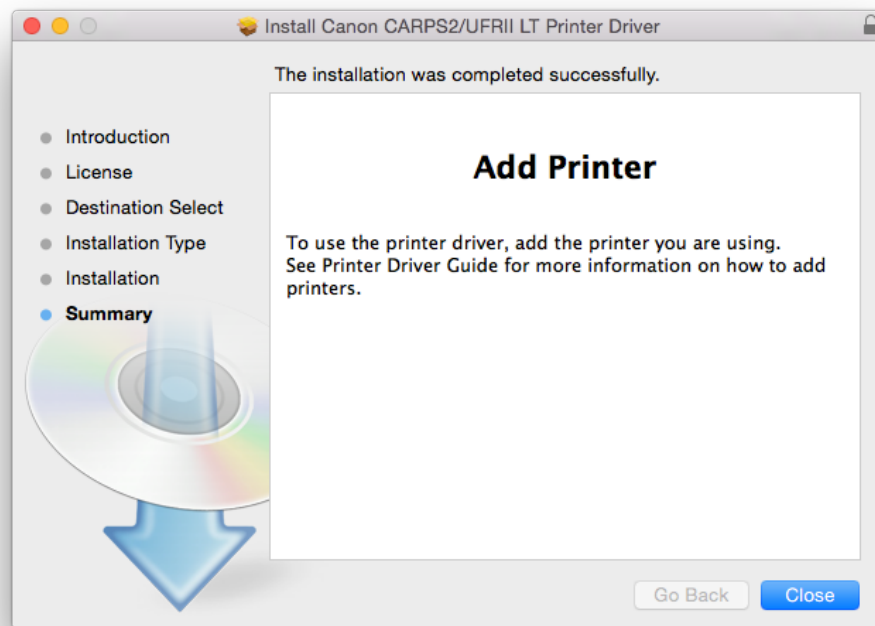
18. 如出現以下畫面，按「Agree」(Choose “Agree”)



19. 按「Install」(Choose “Install”)



20. 按「Close」(Choose “Close”)



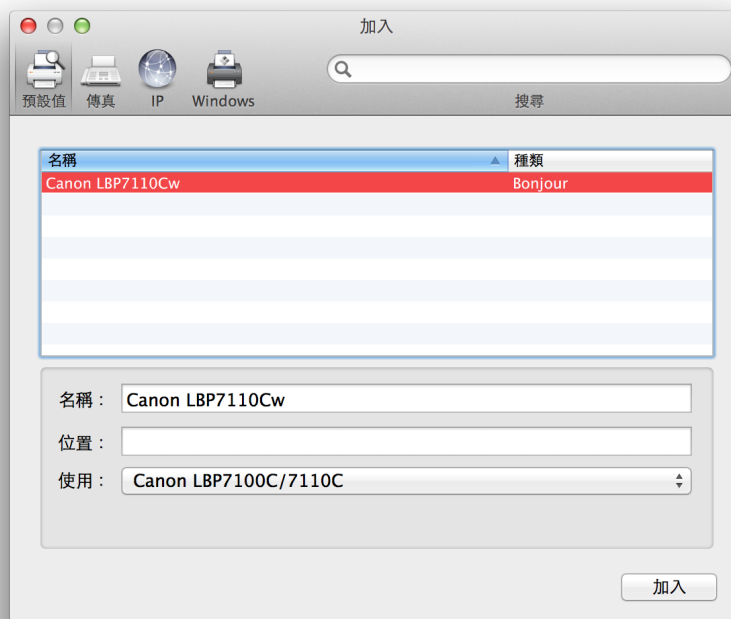
21. 完成安裝驅動程式後需新增印表機，到「系統偏好設定 (System Preference)」，選「印表機與掃描器 (Printers & Scanners)」(Go to “System Preference”, then open “Printers & Scanners”)



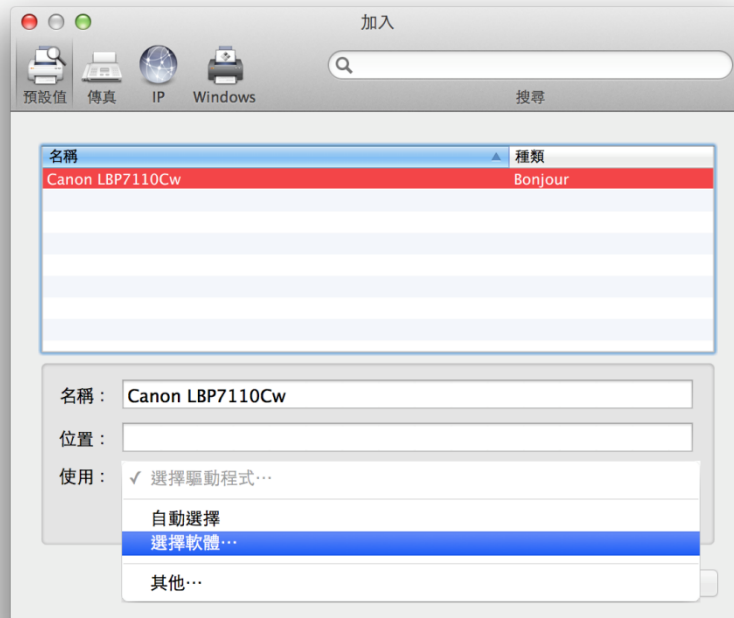
22. 選取左下角「+」按鈕，選「加入印表機或掃描器（Add Printer or Scanner）」
(Click “+”, then choose “Add Printer or Scanner”)



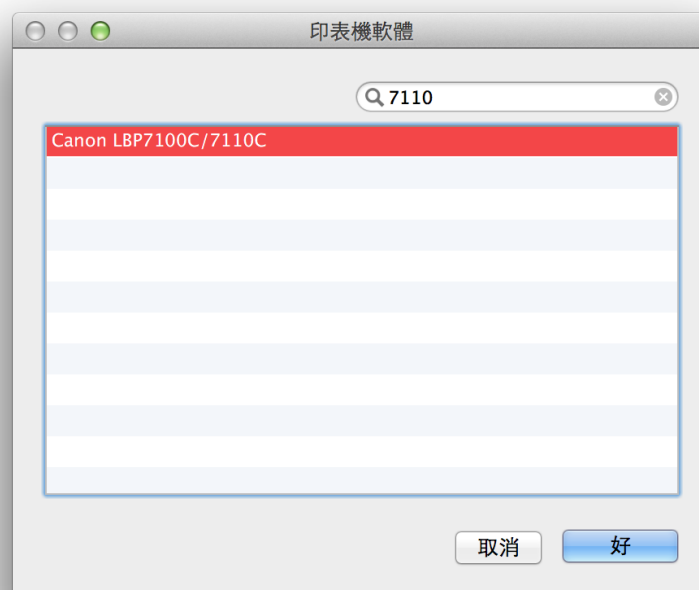
23. 名稱選擇「Canon LBP7100Cw」，種類「Bonjour」，確認「使用（Use）」為「Canon LBP7100C/7110C」，然後按「加入（Add）」 (“Name” chooses “Canon LBP7100Cw”, “Kind” chooses “Bonjour”. After you confirm “Use” is “Canon LBP7100C/7110C”, then choose “Add”)



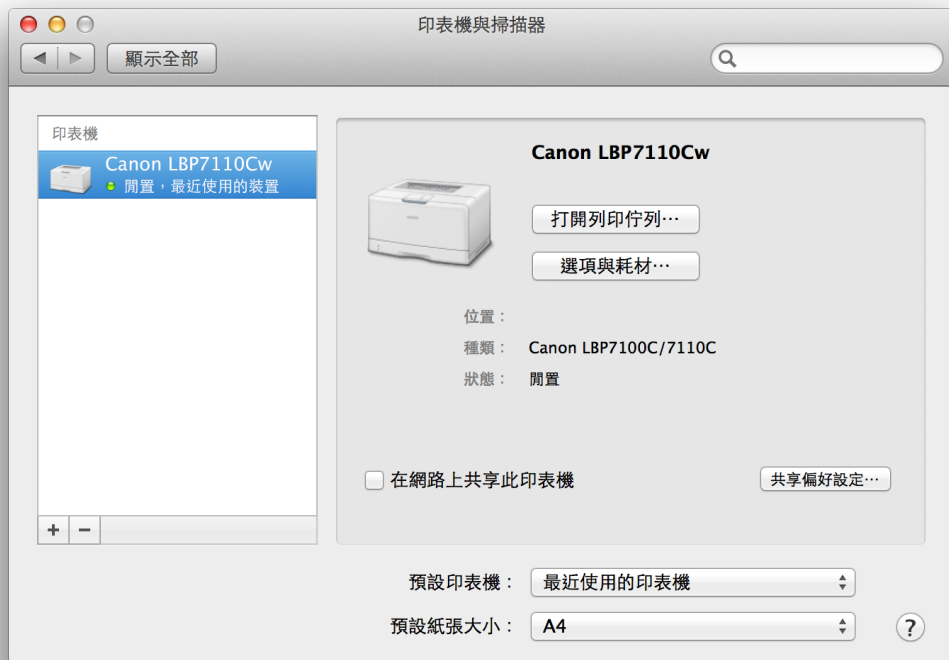
- *** 如「使用 (Use)」部份不是「Canon LBP7110***」，請按以下步驟設定**
(** If “Use” is not “Canon LBP7110***”, please reference the steps below)**
- a) 請如下圖打開「使用 (Use)」的選單，選Select Software (Open “Use” , then choose “Select Software”)



- b) 輸入7110以搜尋「Canon LBP7100C/7110C」 (type “7110”, then choose “Canon LBP7100C/7110C”)



24. 加入完成 (Finish)



-完-

-End-