

**LBP6030w 安裝 Mac 透過無線 LAN 連線連接印表機之驅動程式步驟**  
**The Driver installation procedure for LBP6030w (Via Wi-Fi)**

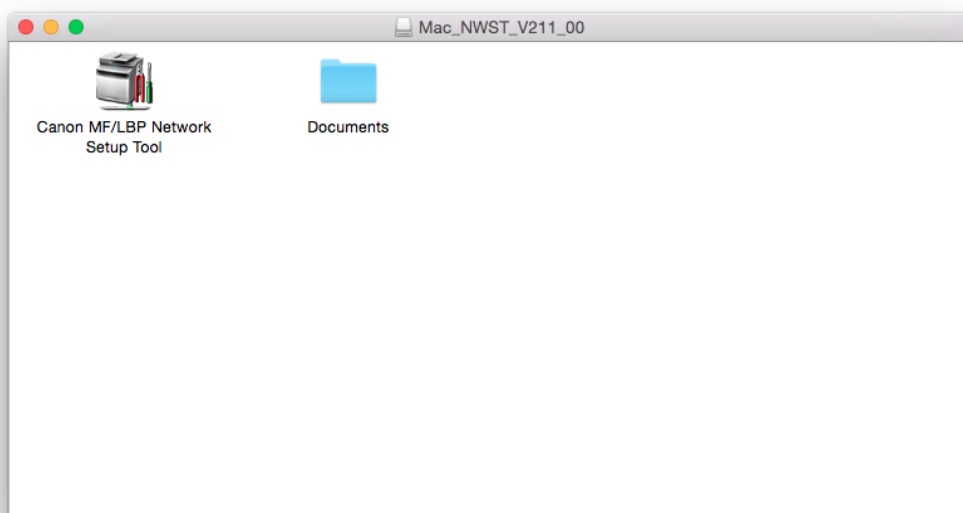
**\*\*注意: 安裝驅動程式前請勿接駁 USB 線，以免系統發生錯誤\*\***

**\*\*Caution: Do not plug –in the USB cable with the printer and the Computer before the installation\*\***

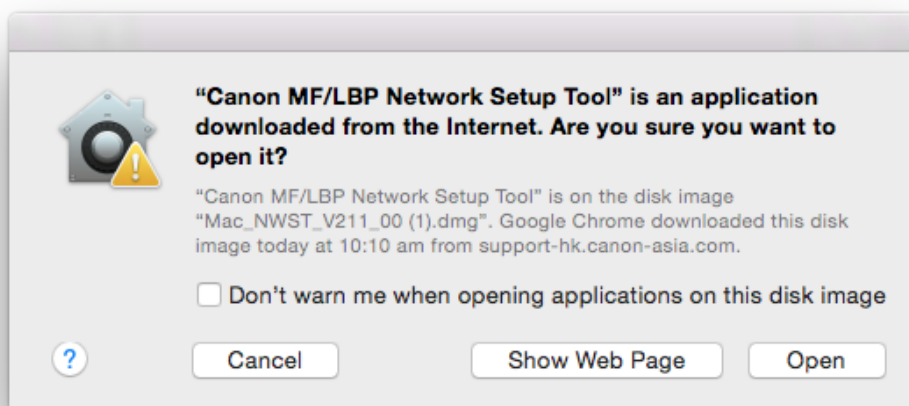
下載及安裝步驟

(Download and Driver Installation Procedure)

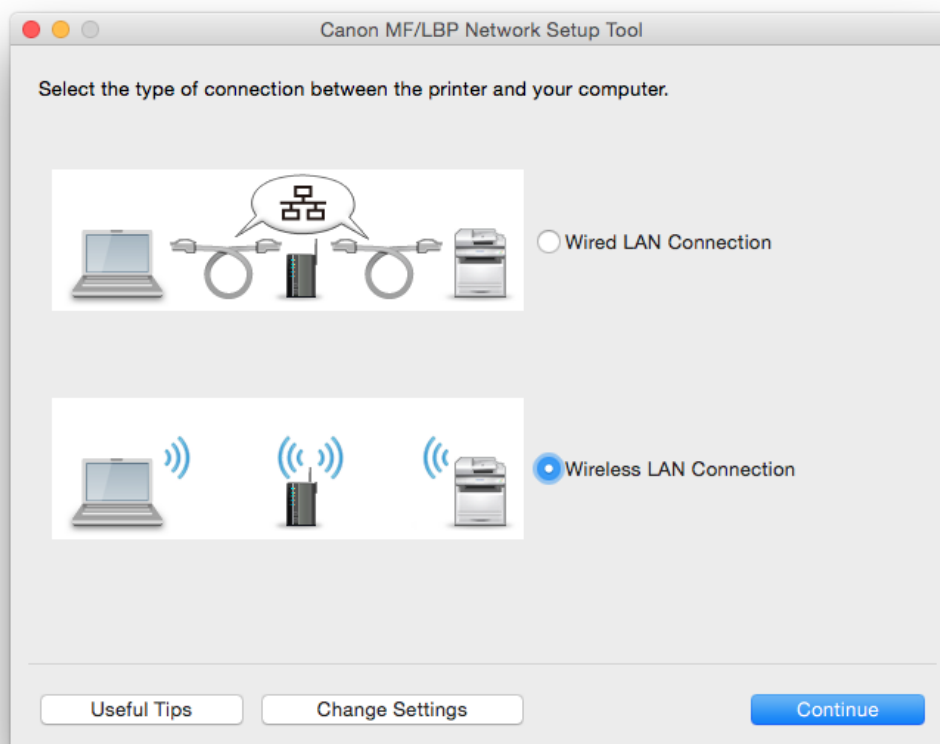
1. 到以下佳能網站下載印表機的驅動程式  
Go to below Canon web and download the printer driver  
[https://hk.canon/en/support/imageCLASS%20LBP6030\\_%20LBP6030B\\_%20LBP6030w/model](https://hk.canon/en/support/imageCLASS%20LBP6030_%20LBP6030B_%20LBP6030w/model)
2. 選擇並下載以下檔案  
Choose and download below files:
  - 網絡設定工具 / Network Setup Tool  
**[Mac] MF/LBP Network Setup Tool Ver.x.xx**
  - 打印機驅動程式 / Printer Driver  
**[Mac] UFR II LT Printer Driver Ver.x.x.x**
3. 開啟 Canon MF/LBP Network Setup Tool  
Open “Canon MF/LBP Network Setup Tool”



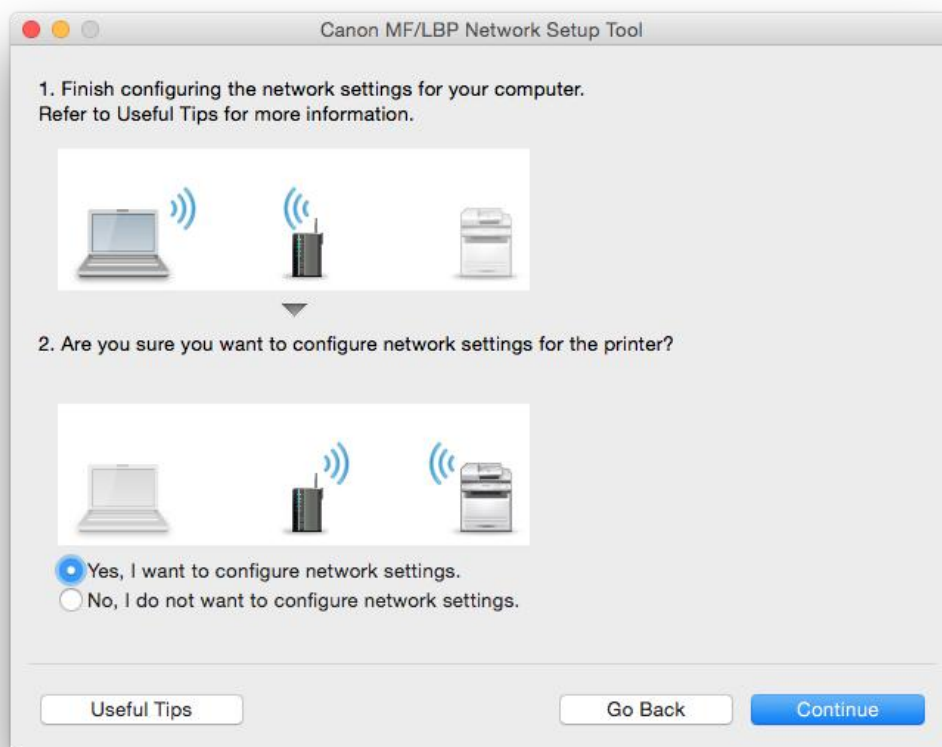
4. 如出現如下畫面，請按「Open」  
Choose “Open”



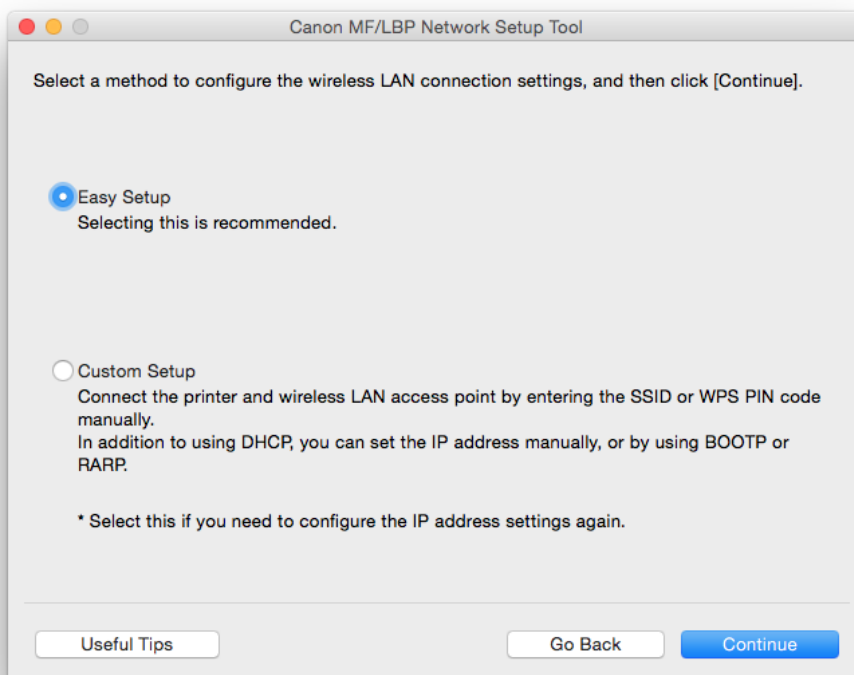
5. 選擇「Wireless LAN Connection」  
Choose “Wireless LAN Connection”



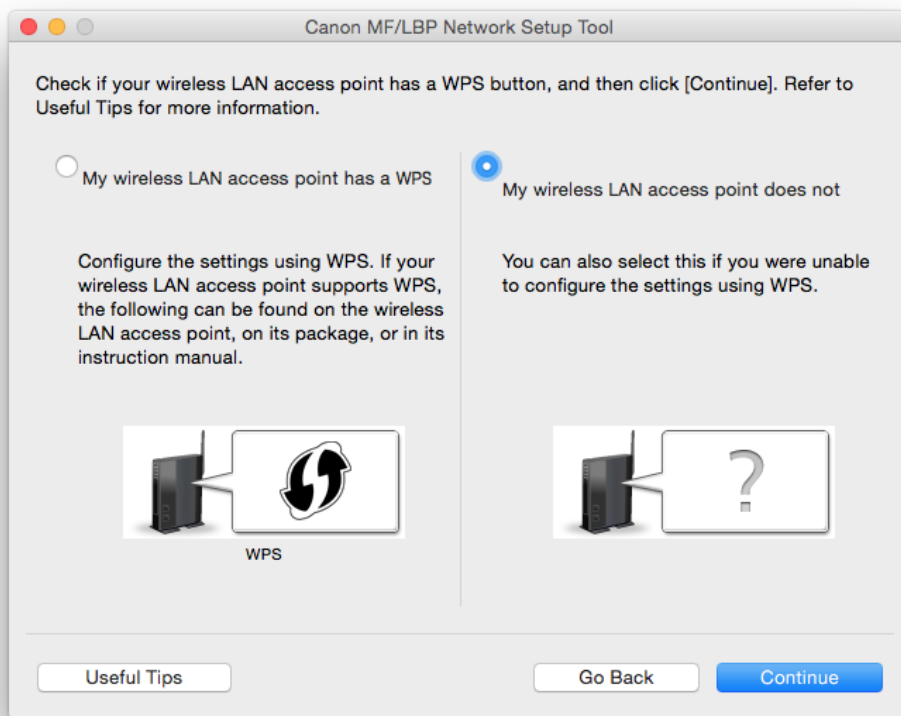
6. 選擇「Yes, I want to configure network settings」  
Choose “Yes, I want to configure network settings”



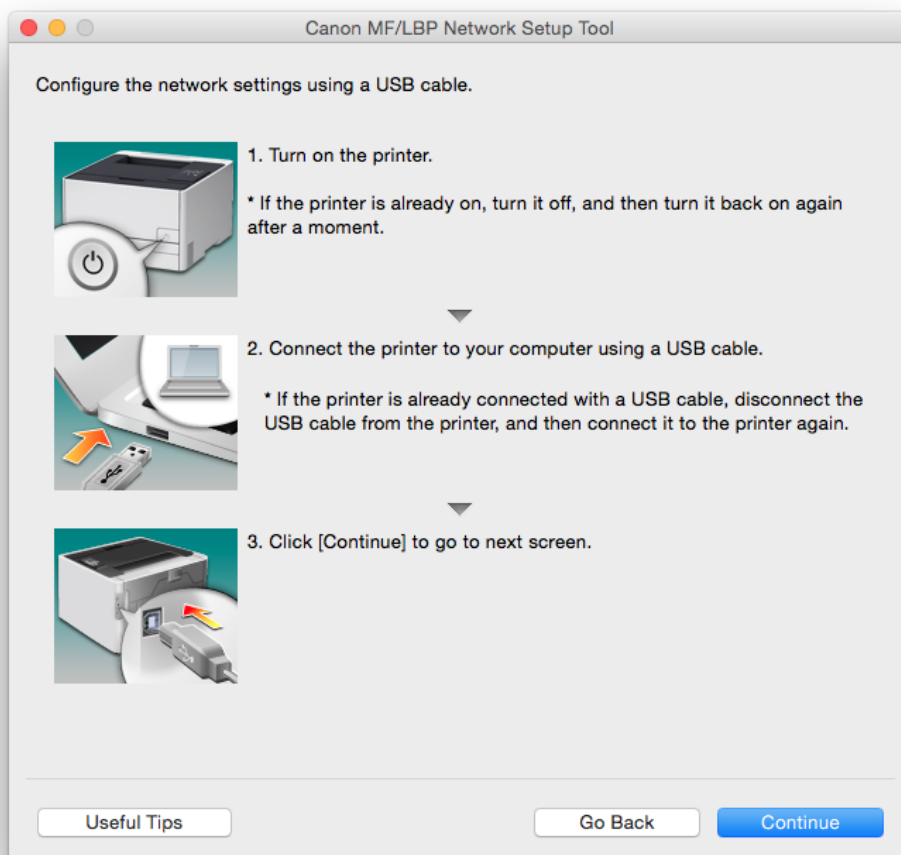
7. 選擇「Easy Setup」  
Choose “Easy Setup”



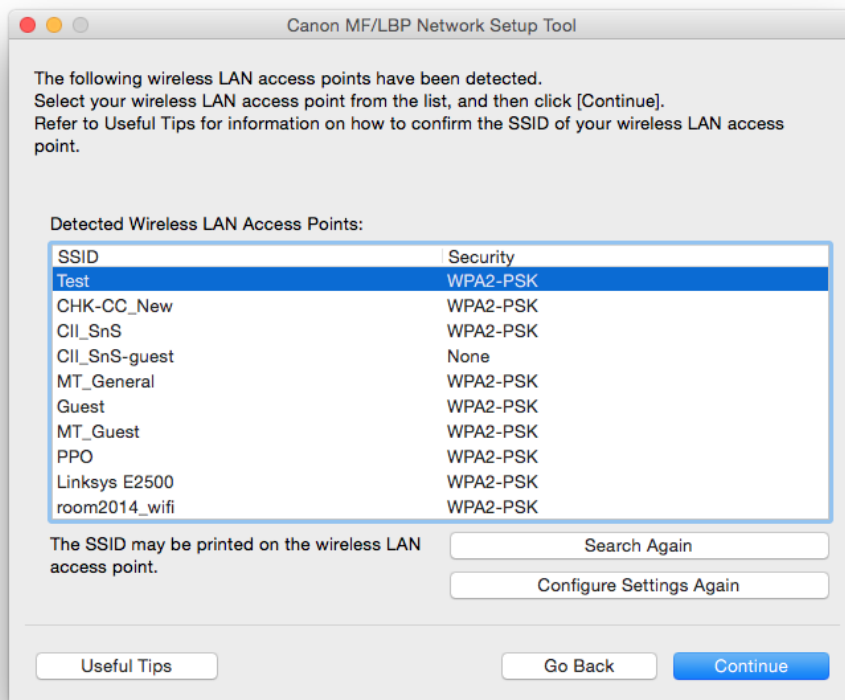
8. 選擇「My wireless LAN access point does not have a WPS button or I cannot find the button」  
Choose “My wireless LAN access point does not have a WPS button or I cannot find the button”



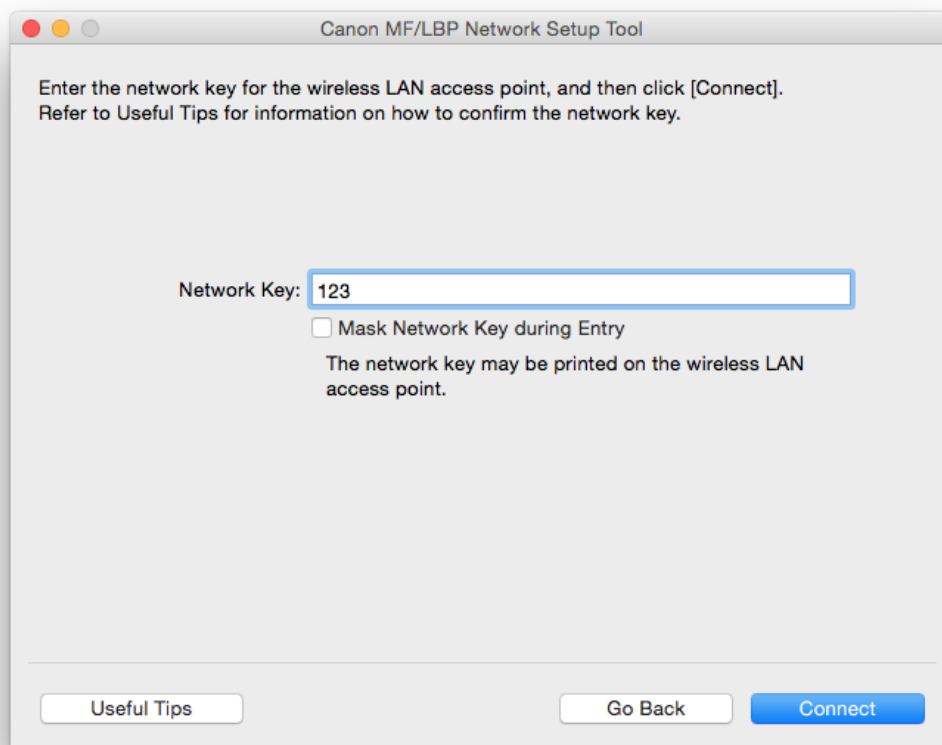
9. 請使用 USB 電纜線連接印表機和電腦，然後按「Continue」  
Connect printer and computer with the USB cable, and then turn on the printer



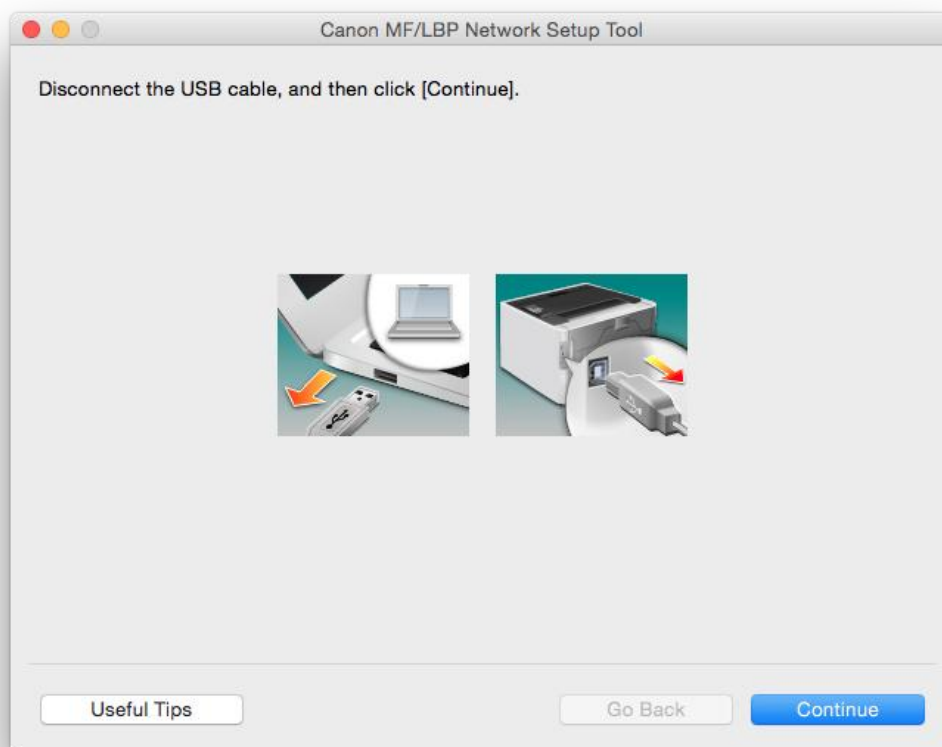
10. 選擇您的網路，按「Continue」  
Select your network, then choose “Continue”



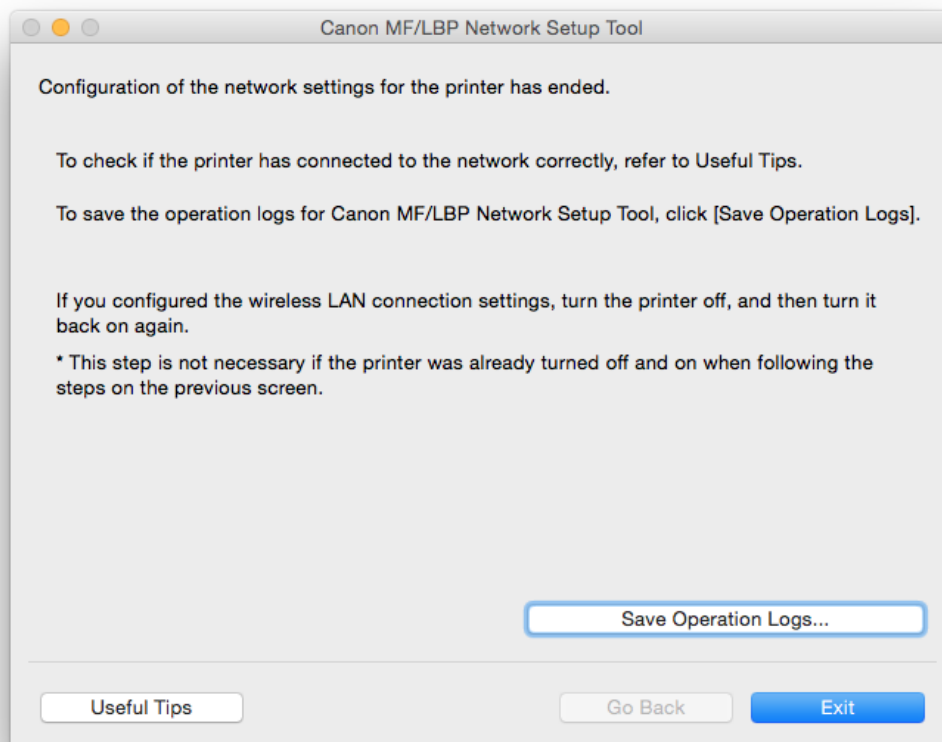
11. 如出現如下畫面，請輸入 Wi-Fi 網路金鑰  
Type your Network Key



12. 拔取 USB 連接線，按「Continue」  
Disconnect your USB cable, then choose “Continue”



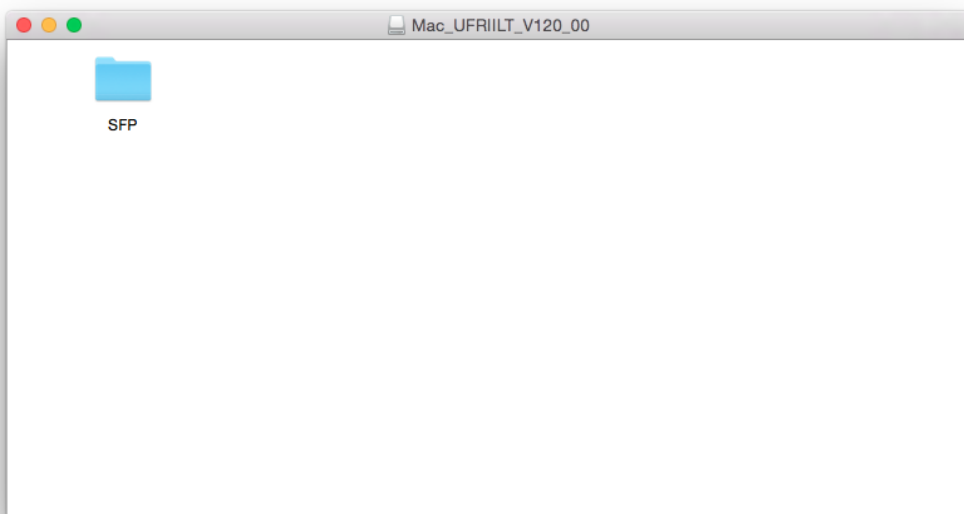
13. 按「Exit」離開網路設定工具  
Choose “Exit”



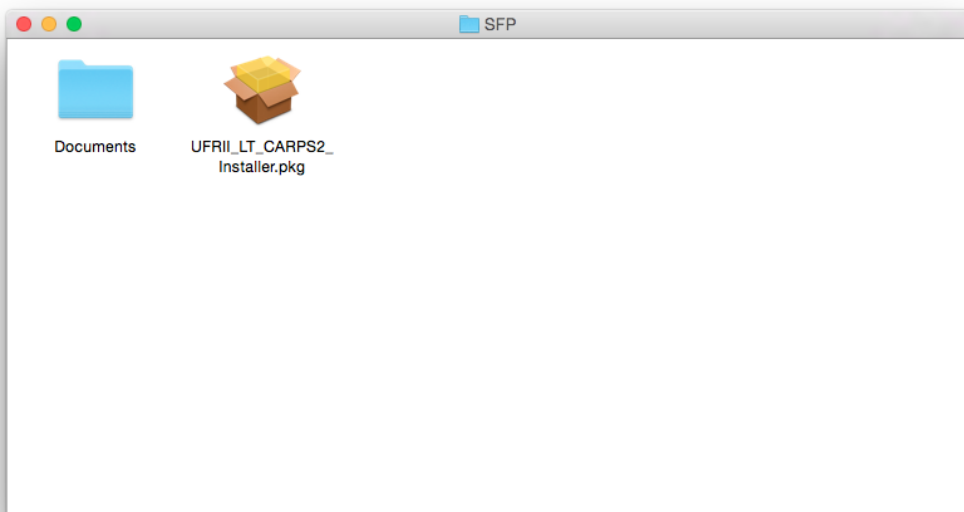
## 驅動程式安裝

### Driver installation

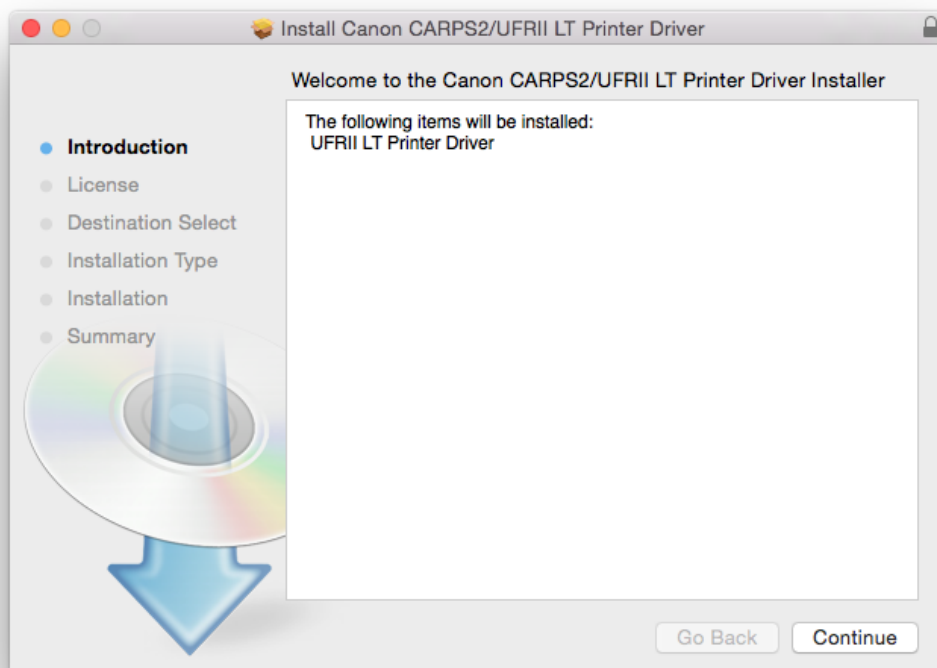
14. 開啟下載檔案「UFR II LT Printer Driver」，進入「SFP」文件夾  
Open “UFR II LT Printer Driver”, then open “SFP”



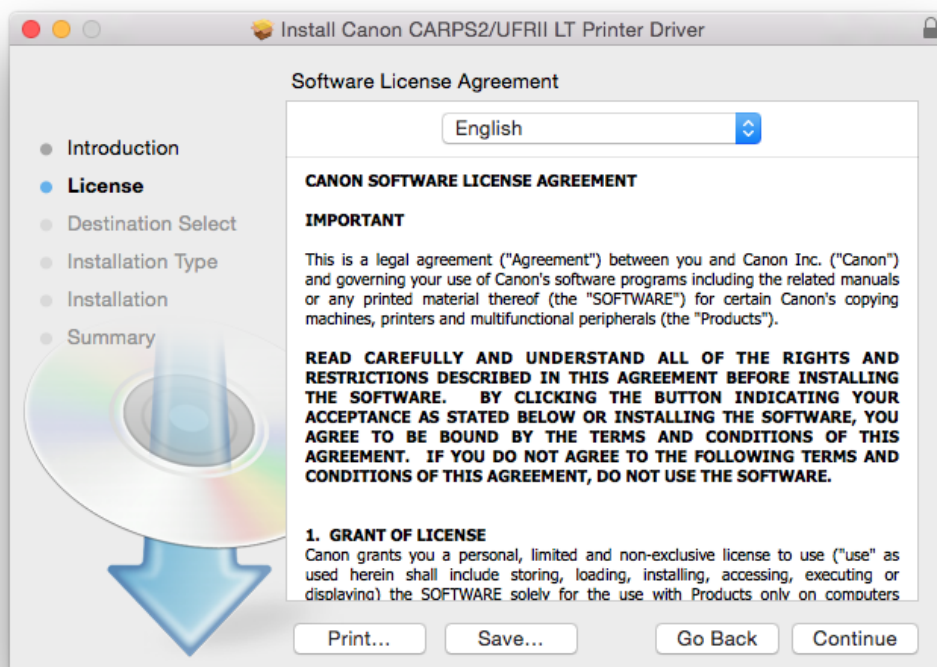
15. 開啟“UFR II LT\_\*\*\*.pkg”文件開始安裝設定  
Double Click / Open “UFR II LT\_\*\*\*.pkg”



16. 按「Continue」  
Choose “Continue”

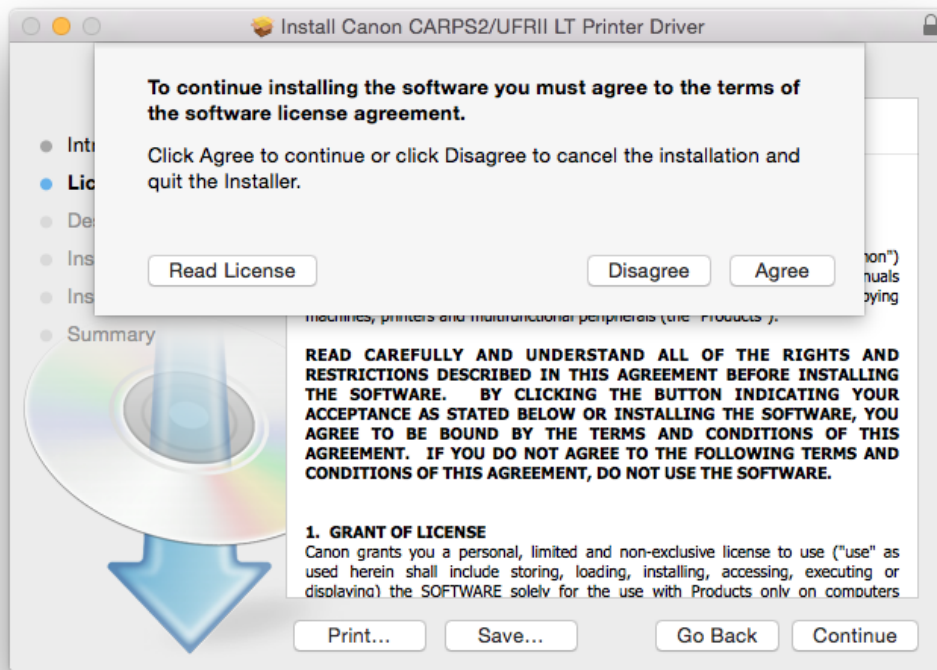


17. 按「Continue」  
Choose “Continue”

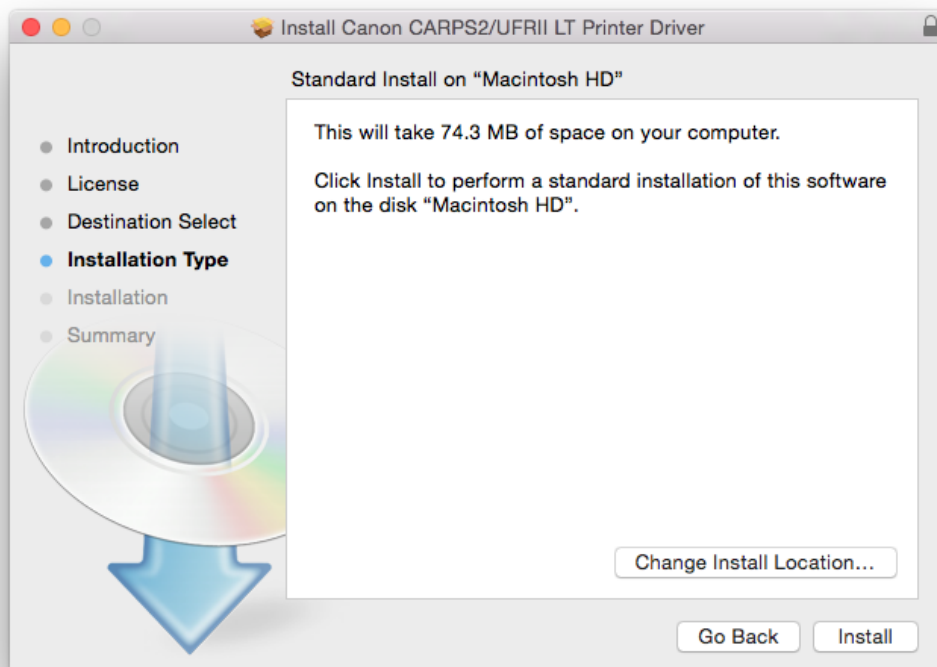




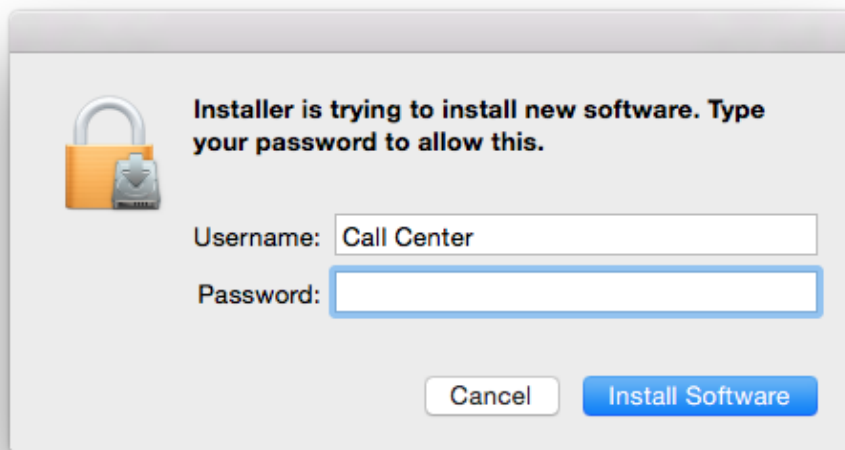
18. 如出現以下畫面，按「Agree」  
Choose “Agree”



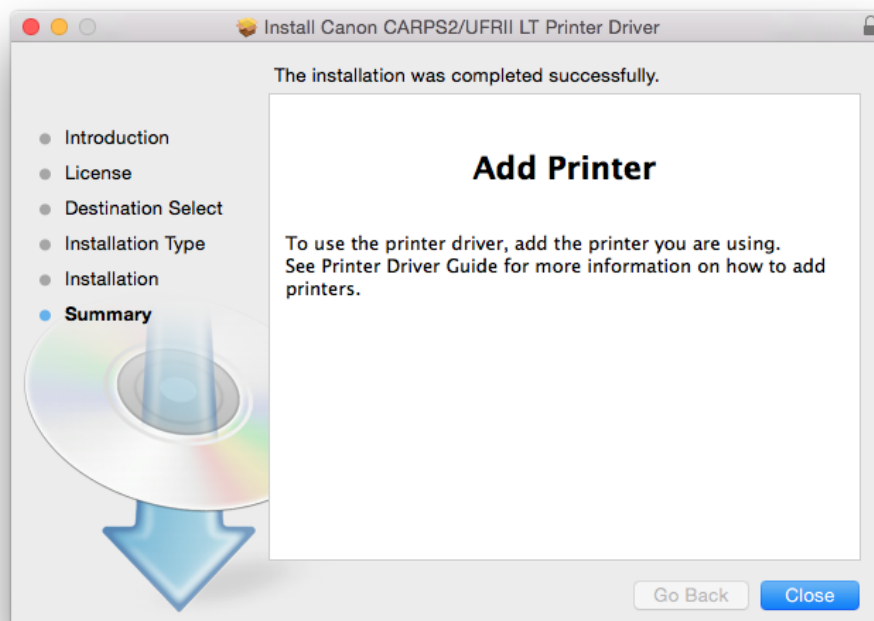
19. 按「Install」  
Choose “Install”



20. 如出現以下畫面，請輸入登入密碼  
Type your password

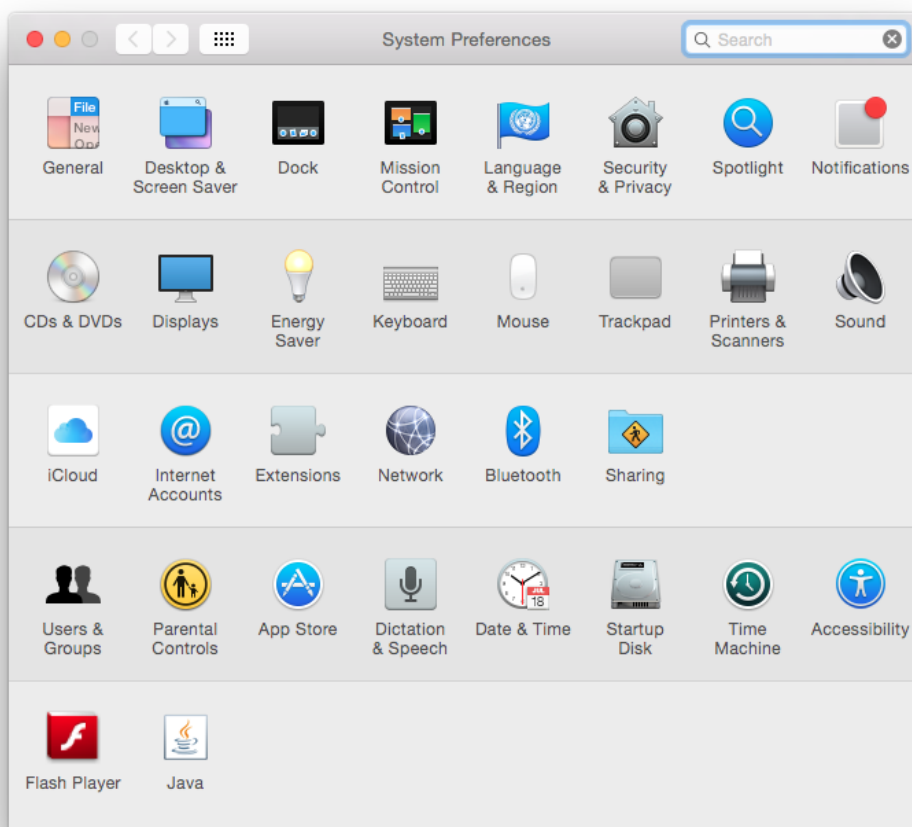


21. 按「Close」  
Choose "Close"



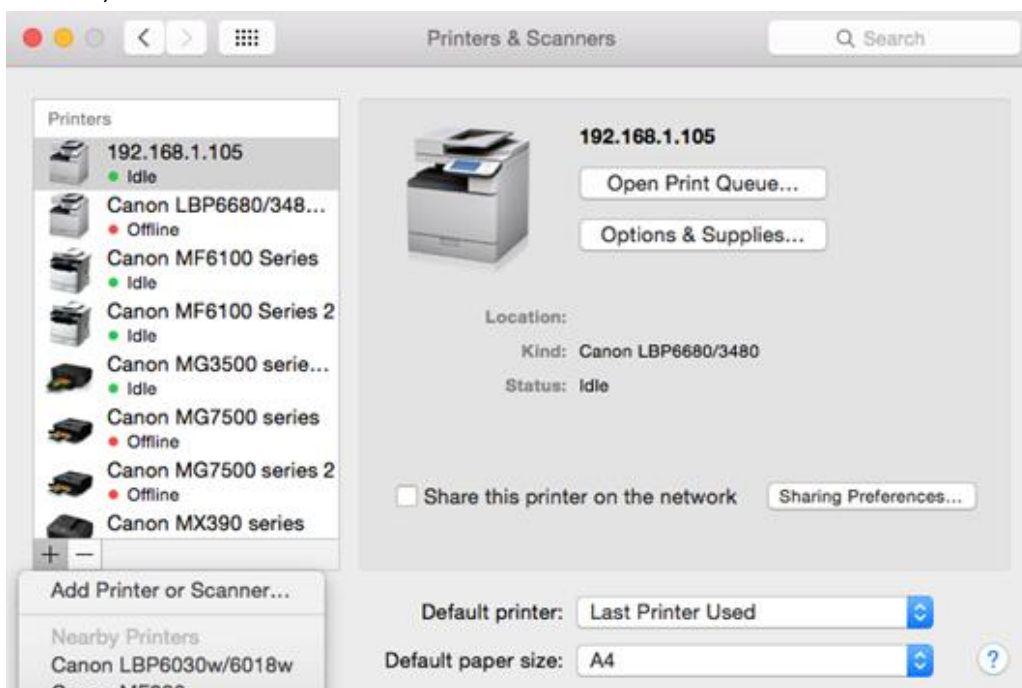
22. 完成安裝驅動程式後需新增印表機，到「系統偏好設定 (System Preference)」，選「印表機與掃描器 (Printers & Scanners)」

Go to "System Preference", then open "Printers & Scanners"

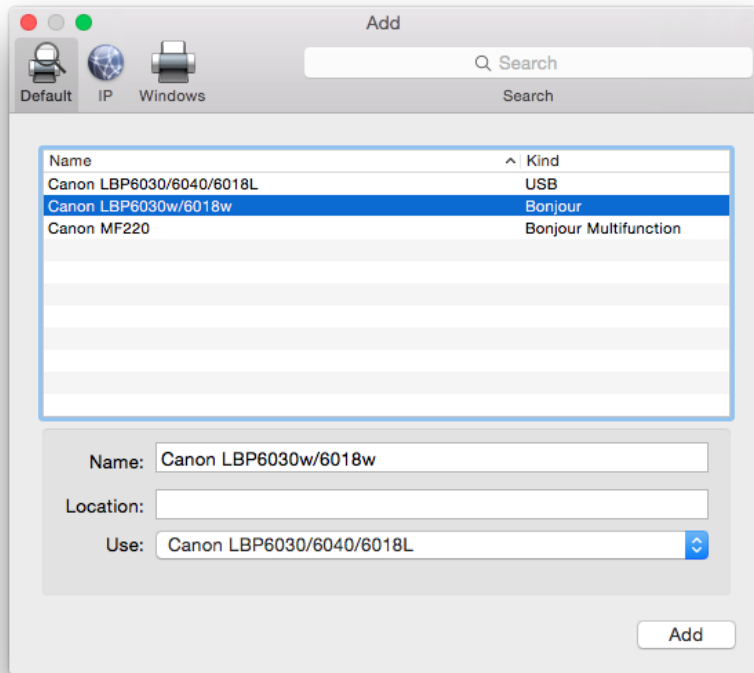


23. 選取左下角「+」按鈕，選「加入印表機或掃描器 (Add Printer or Scanner)」

Click "+", then choose "Add Printer or Scanner"

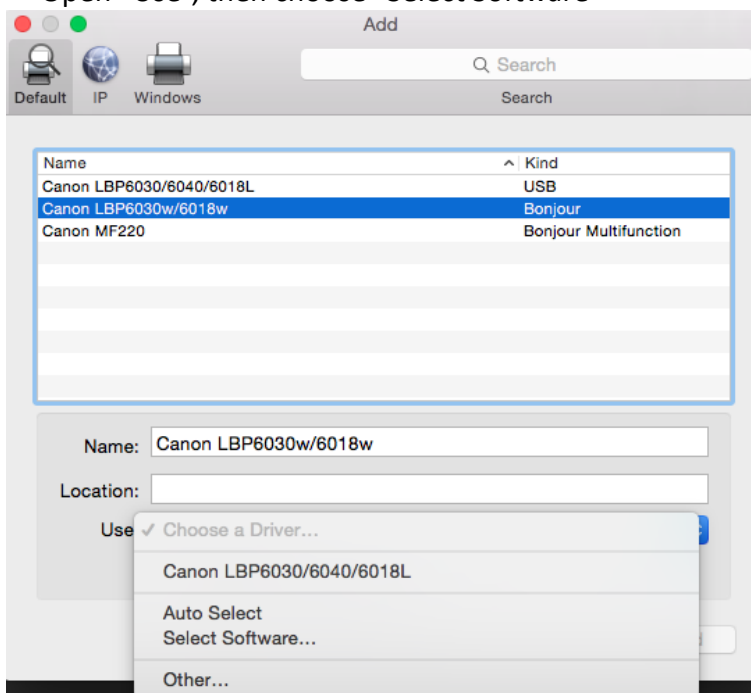


24. 名稱選擇「Canon LBP6030\*\*\*」，種類「Bonjour」，確認「使用（Use）」為「Canon LBP6030\*\*\*」，然後按「加入（Add）」  
“Name” chooses “Canon LBP6030\*\*\*”, “Kind” chooses “Bonjour”. After you confirm “Use” is “Canon LBP6030\*\*\*”, then choose “Add”

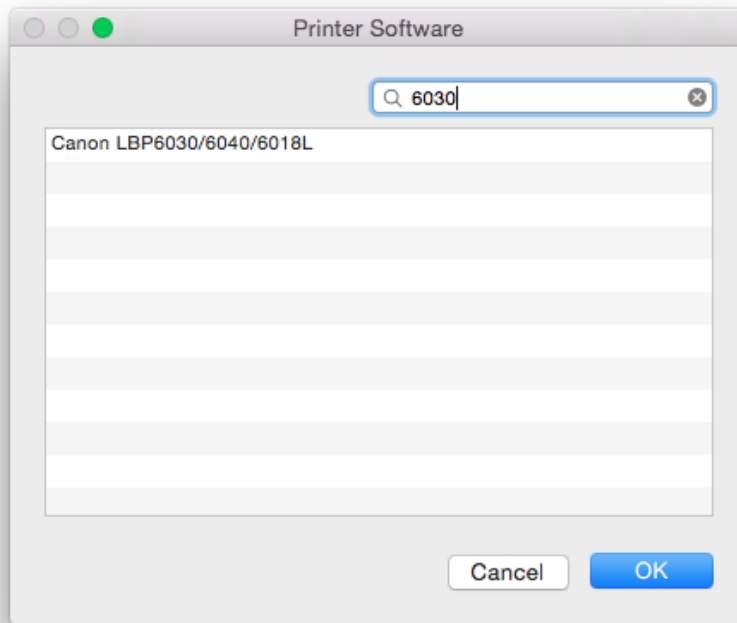


\*\*\* 如「使用（Use）」部份不是「Canon LBP6030\*\*\*」，請按以下步驟設定\*\*  
(\*\* If “Use” is not “Canon LBP6030\*\*\*”, please reference the steps below)\*\*

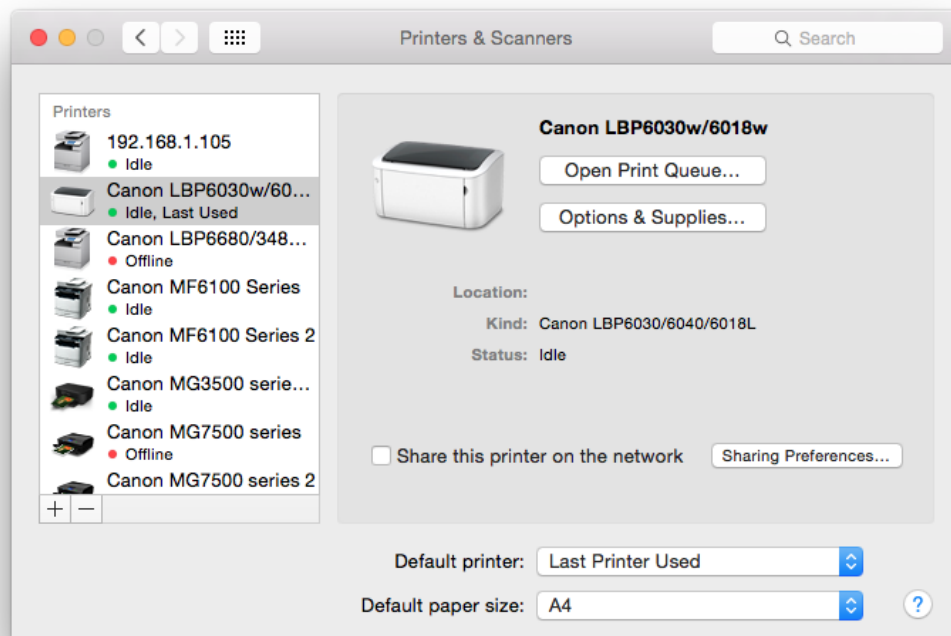
- a) 請如下圖打開「使用（Use）」的選單，選 Select Software  
Open “Use”, then choose “Select Software”



- b) 輸入 6030 以搜尋「Canon LBP6030\*\*\*」  
Type “6030”, then choose “Canon LBP6030\*\*\*”



25. 加入完成  
Finish



-完-  
-End-