

MF212w安裝Win 8.1 透過無線LAN連線連接印表機之驅動程式步驟

****注意: 安裝驅動程式前請勿接駁USB線，以免系統發生錯誤****

**** Please don't plug the USB cable until the driver asked to do so**

先將打印機連接到路由器，詳細可參考以下步驟：
(The Connection by selecting a wireless router)：

1. 按 


(Press .)

2. 使用▲/▼選擇 <網路設定>，然後按 

- 若顯示 PIN 碼輸入畫面，請使用數字鍵輸入 PIN 碼，然後按 。


(Use / to select <Network Settings>, and press .

- If a screen for entering a PIN is displayed, enter the PIN with the numeric keys and press .

3. 選擇 <無線區域網路設定>，然後按 

- 如果顯示 <啟用無線區域網路？> 訊息，選擇 <是>，然後按 

(Select <Wireless LAN Settings>, and press .

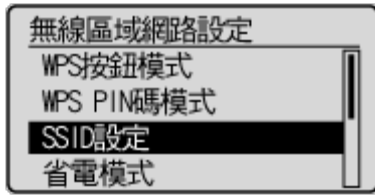
- If the <Enable the wireless LAN?> message is displayed, select <Yes>, and press .

4. 閱讀顯示的訊息，然後按 

(Read the message that is displayed, and press .

5. 選擇 <SSID設定>，然後按 。

(Select <SSID Settings>, and press .

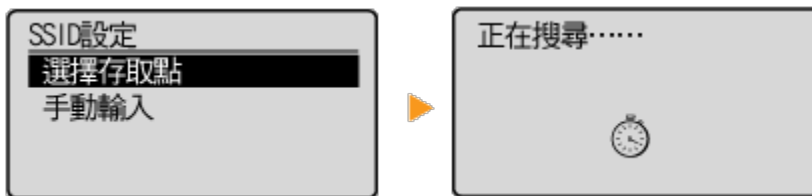


6. 選擇 <選擇存取點>，然後按 **OK**。

- 本機開始搜尋可用的無線路由器。

(Select <Select Access Point>, and press **OK**.)

- The machine starts searching for available wireless routers.)



7. 選擇無線區域網路路由器，然後按 **OK**。

- 選擇與您記下的 SSID 相符的路由器。

(Select a wireless LAN router, and press **OK**.)


- Select the router whose SSID matches the one that you have written down.)



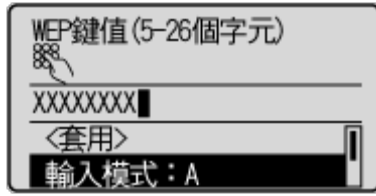
8. 輸入您記下的網路鍵值。

- 使用數字鍵輸入網路鍵值，選擇 <套用>，然後按 **OK**。

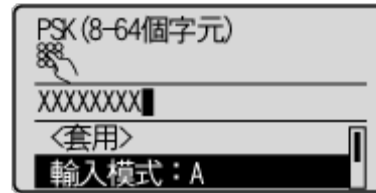
(Enter the network key that you have written down.)

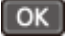
- Enter the network key using the numeric keys, select <Apply>, and press .)

WEP



WPA-PSK 或 WPA2-PSK



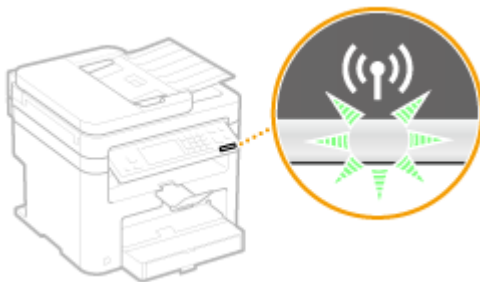
9. 選擇 <是>，然後按 。

(Select <Yes>, and press .)



10. 確認控制面板上的 Wi-Fi 指示燈閃爍。(Check that the Wi-Fi indicator is blinking on the operation panel.)

偵測到無線路由器時，Wi-Fi 指示燈閃爍。(The Wi-Fi indicator blinks when a wireless router is detected.)



11. 設定完成時，會顯示以下畫面，約 2 秒後 Wi-Fi 指示燈隨即亮起。(When the setup is completed, the screen below is displayed, and approximately 2 seconds later, the Wi-Fi indicator lights up.)



等待約 2 分鐘，直到本機的 IP 位址設定完成。(Wait approximately 2 minutes until the IP address settings of the machine are completed.)

12. 按電郵的連結下載驅動程式檔案

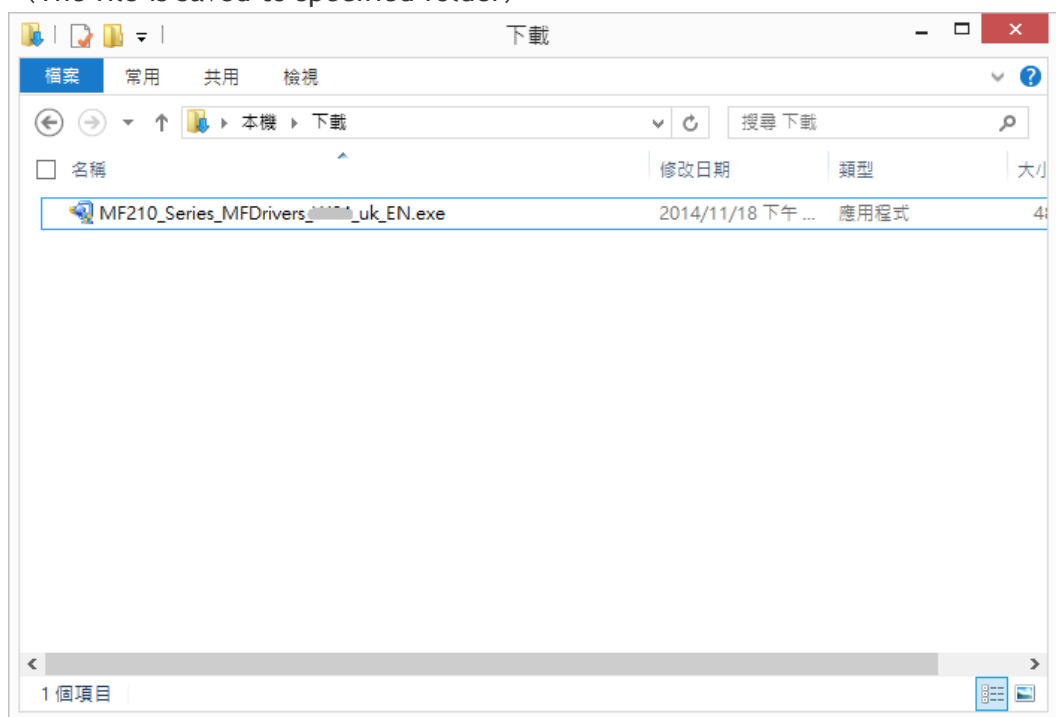
(Click the link on email and download the printer driver)

** 注意：如瀏覽器詢問「儲存」還是「執行」檔案，請務必選擇「儲存」

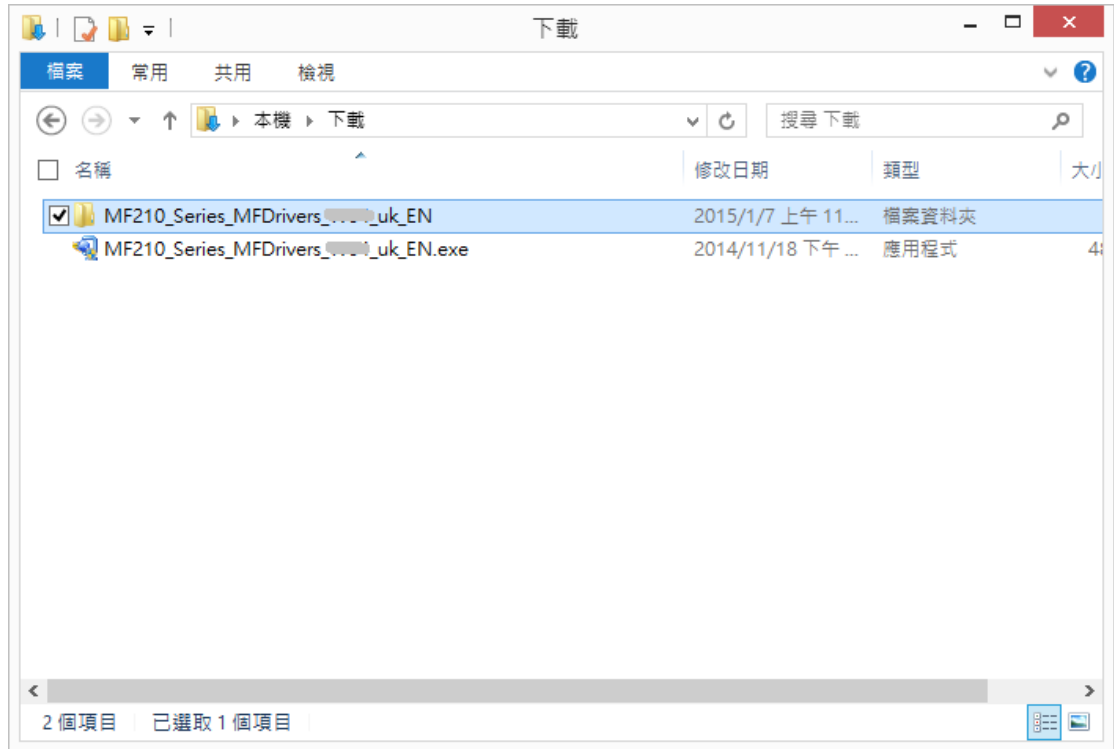
** Caution: If the browser asks “Run” or “Save”, please click “Save”

13. 下載的文件以自解壓縮檔檔案 (.exe格式) 保存在指定的文件夾中。

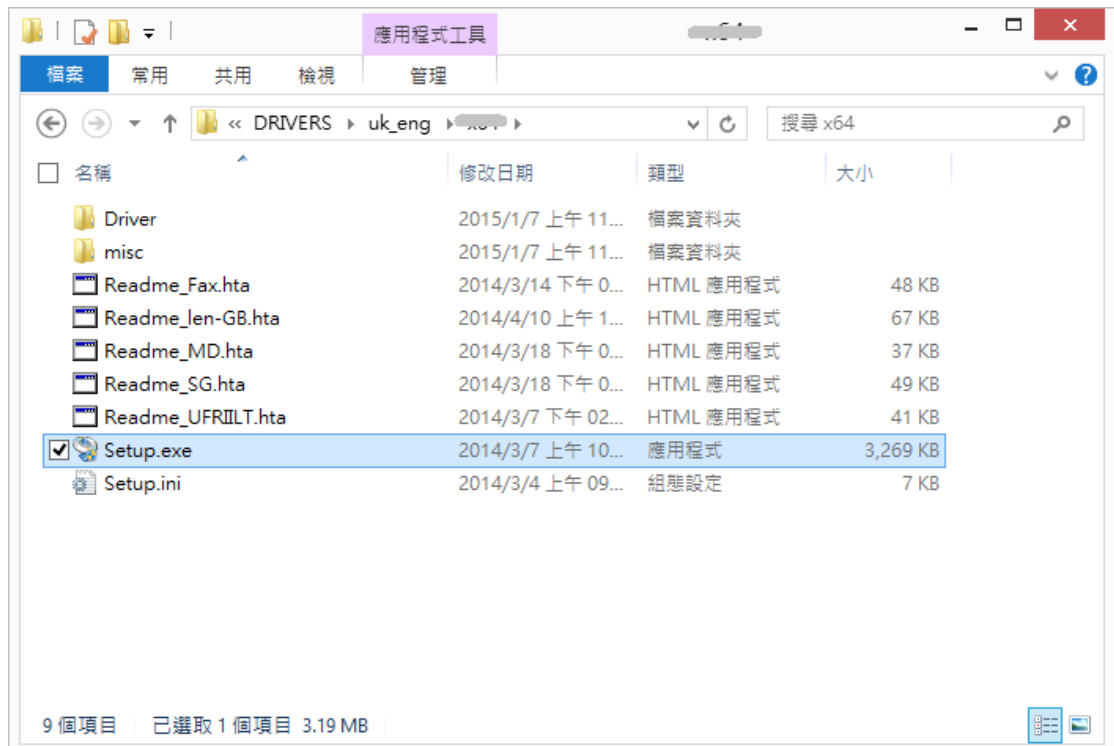
(The file is saved to specified folder)



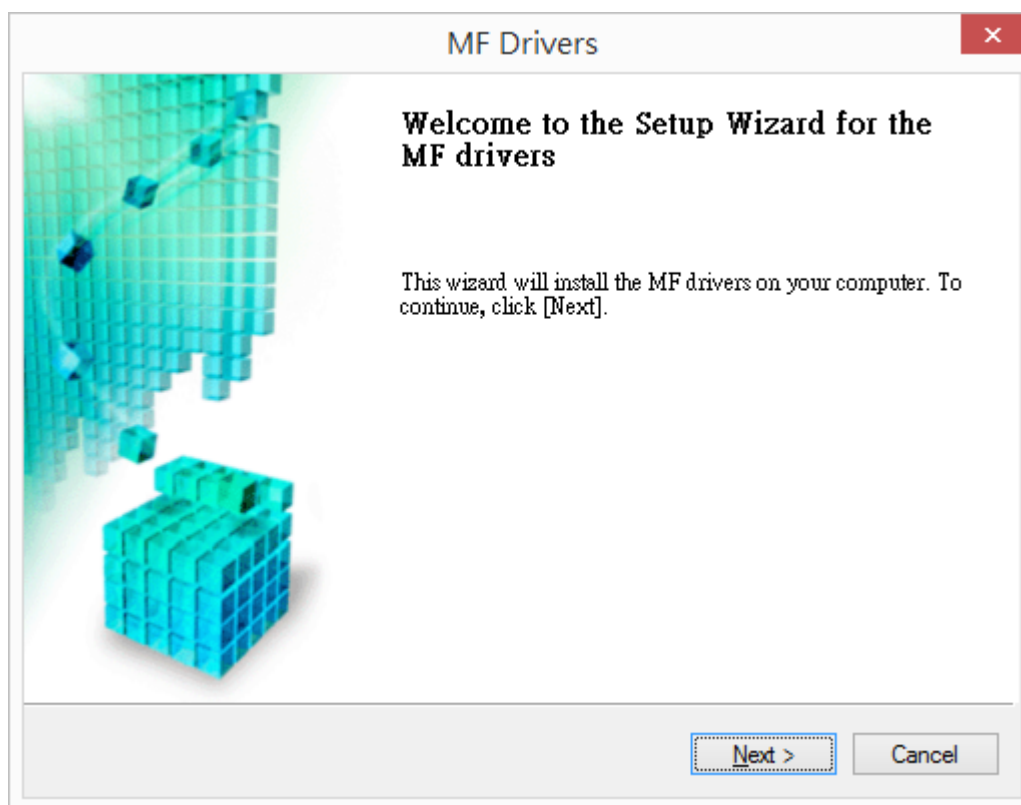
14. 打開文件解壓縮。將在同一文件夾中創建新文件夾。新文件夾的名稱與解壓縮文件的名稱相同。（Open “MF210_***.exe”, a new folder will be created.）
- 如打開文件解壓縮時出現「使用者帳戶控制」選項，請按「是」。（If “User Account Control” window pop-up. Choose “Yes”）



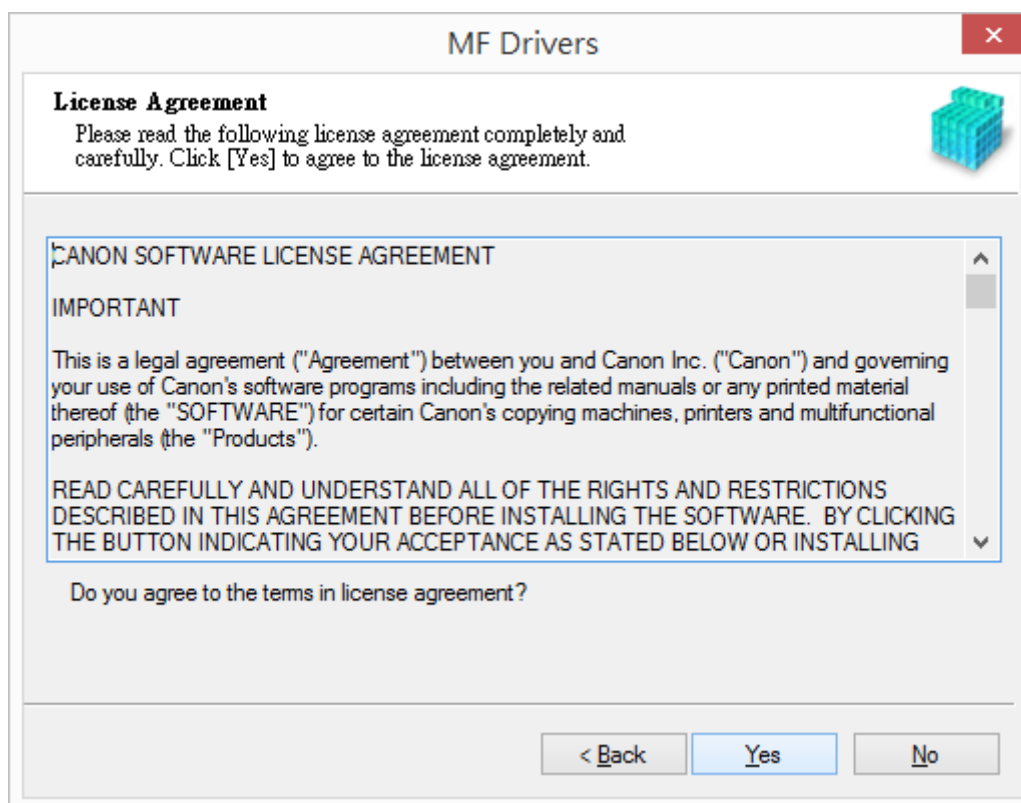
15. 進入“Drivers/uk_eng/32bit 或 x64/”，打開解壓縮後的“Setup.exe”文件開始安裝。（Go into “Drivers” > “uk_eng” > “32bit” or “x64”, then Double Click / Open “Setup.exe”）



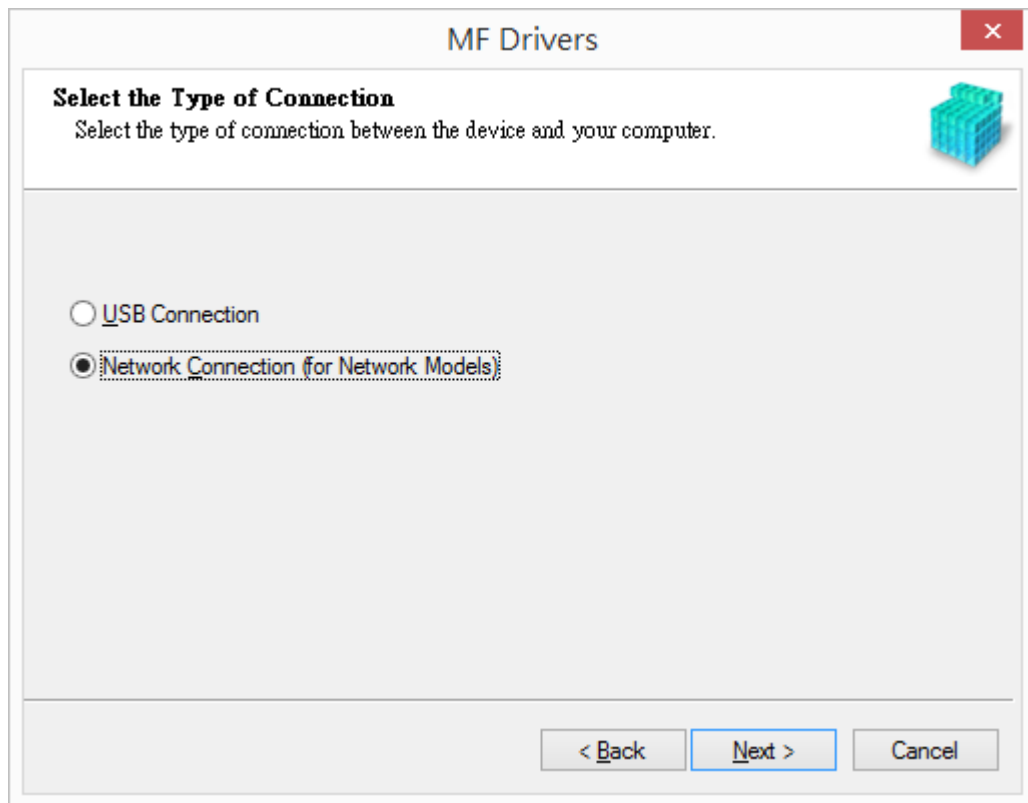
16. 按「下一步」 (Choose "Next")



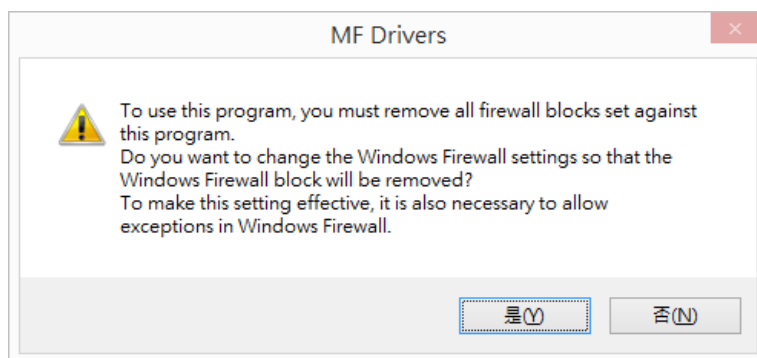
17. 按「是」 (Choose "Yes")



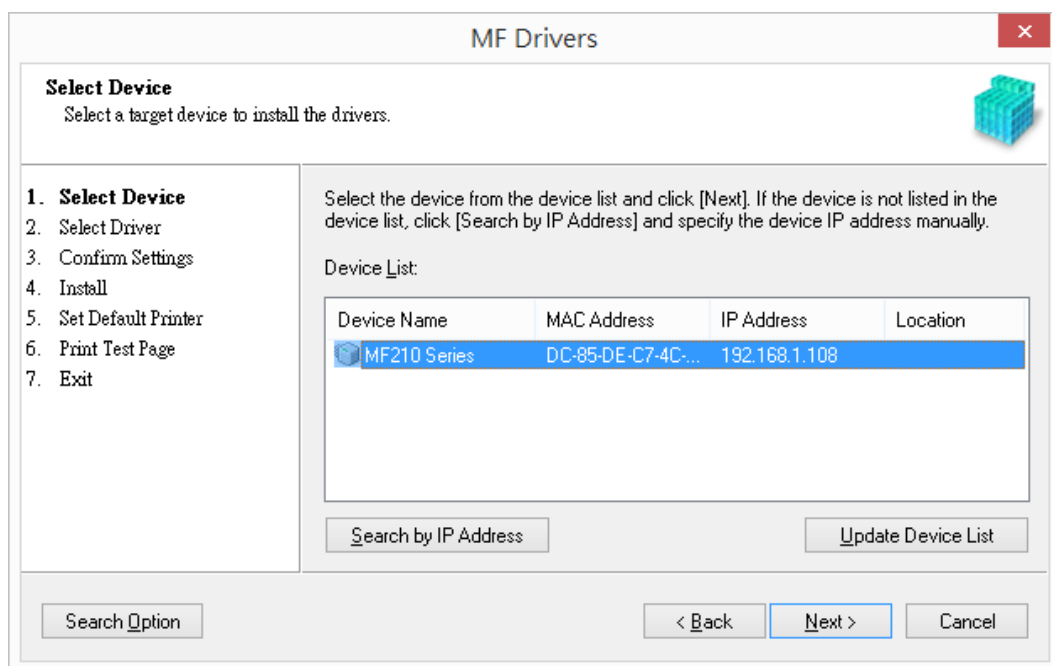
18. 選擇「網路連線（適用於網路型號）(C)」 (Select “Network Connection...”
Choose “Next”)



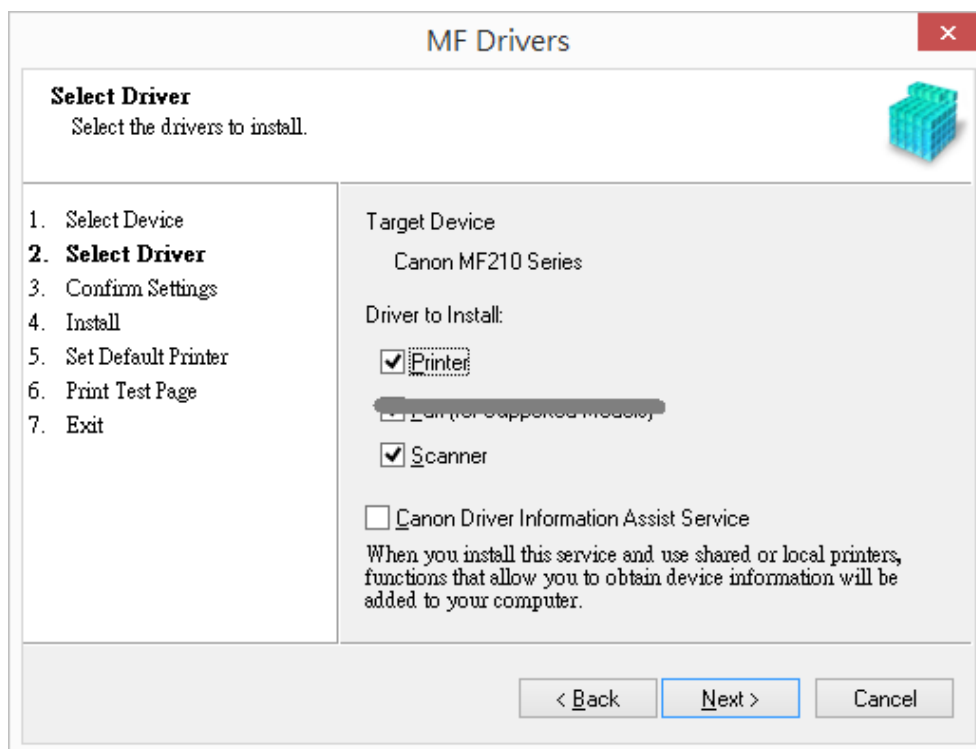
19. 確定已移除所有防火牆對此程式的封鎖設定 (Choose “Yes”)



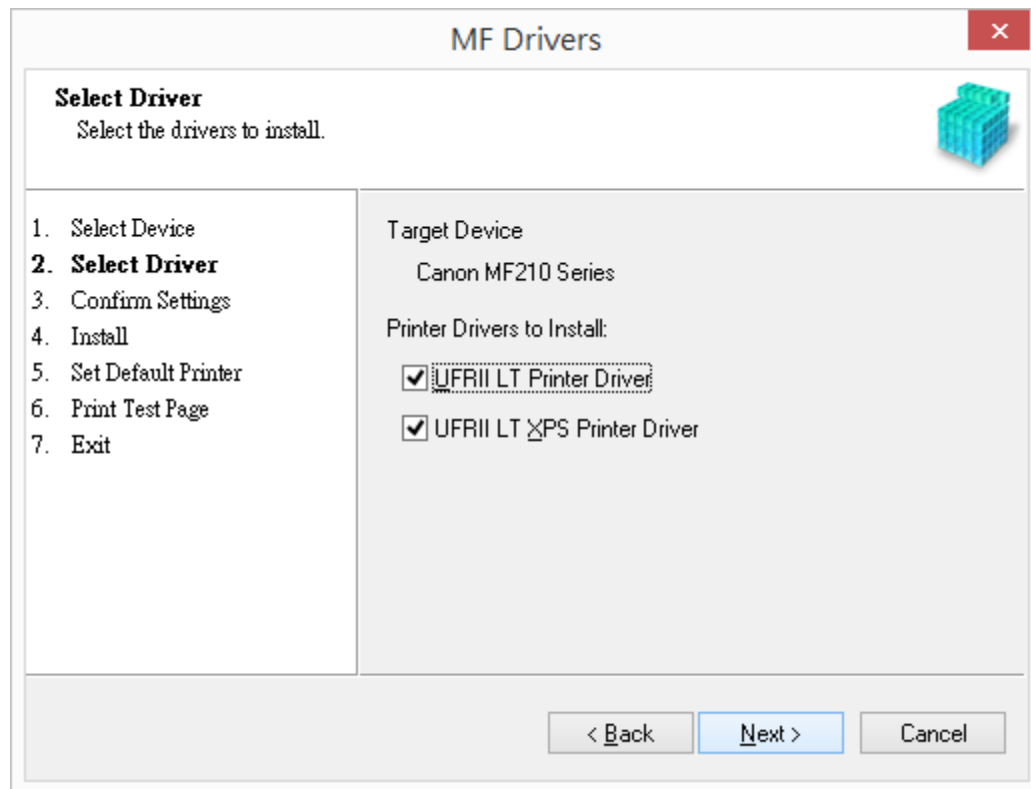
20. 按「下一步」 (Choose “Next”)



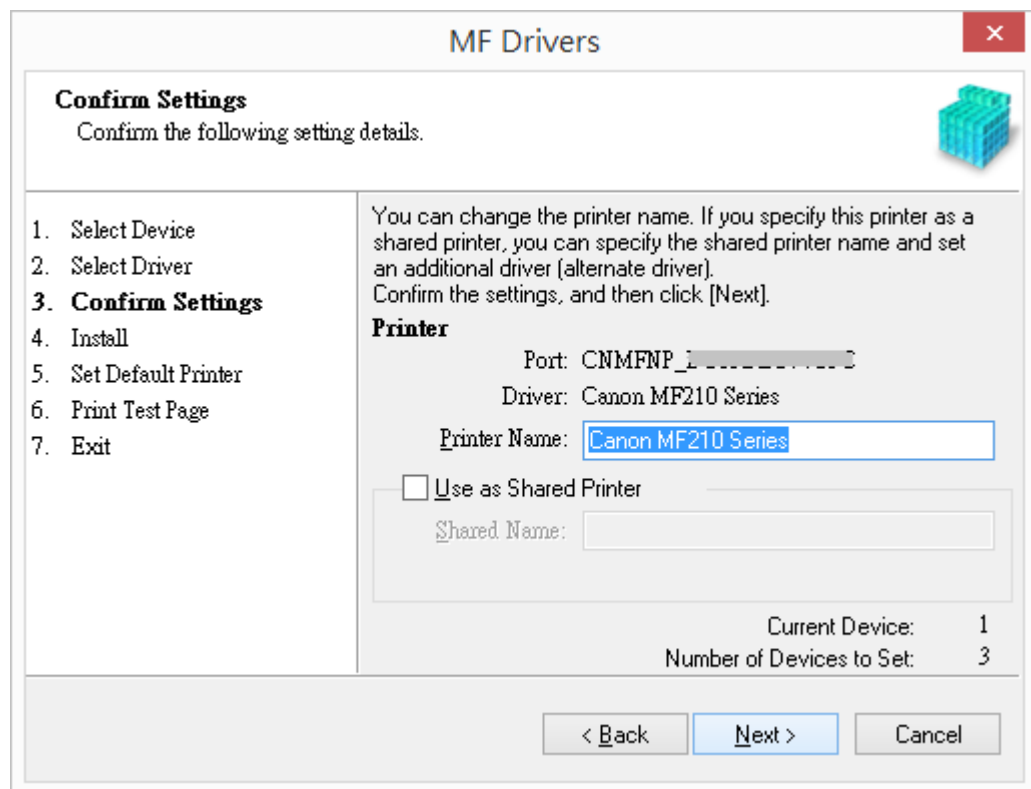
21. 按「下一步」 (Choose “Next”)



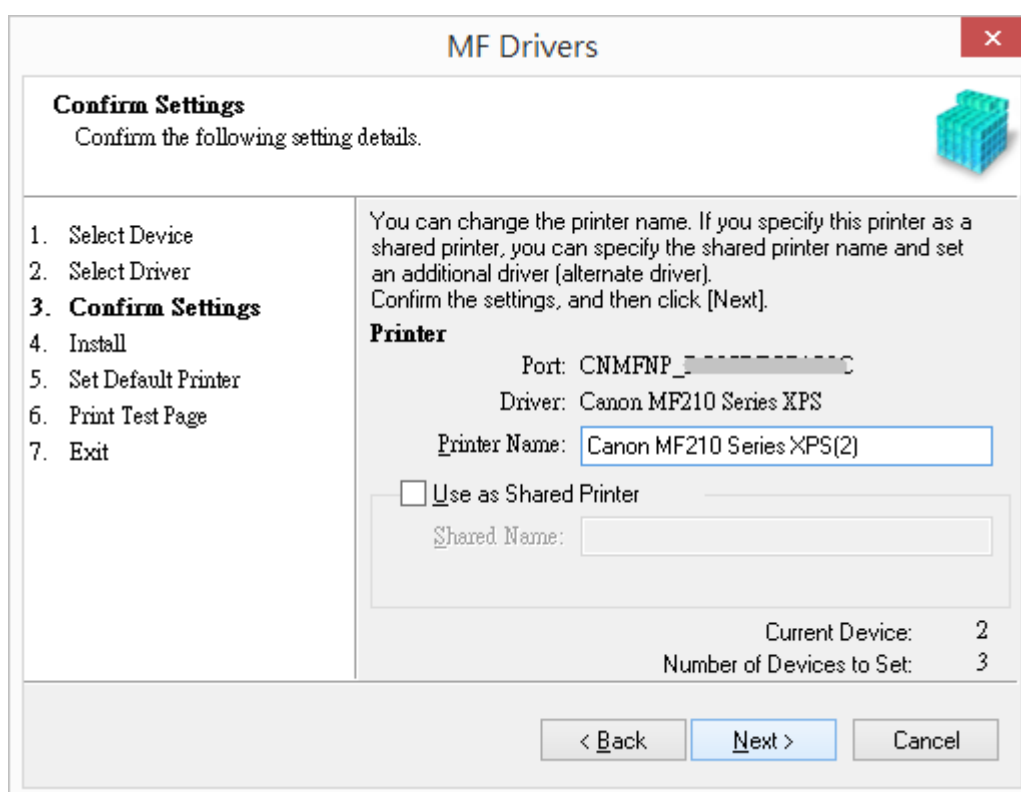
22. 按「下一步」 (Choose “Next”)



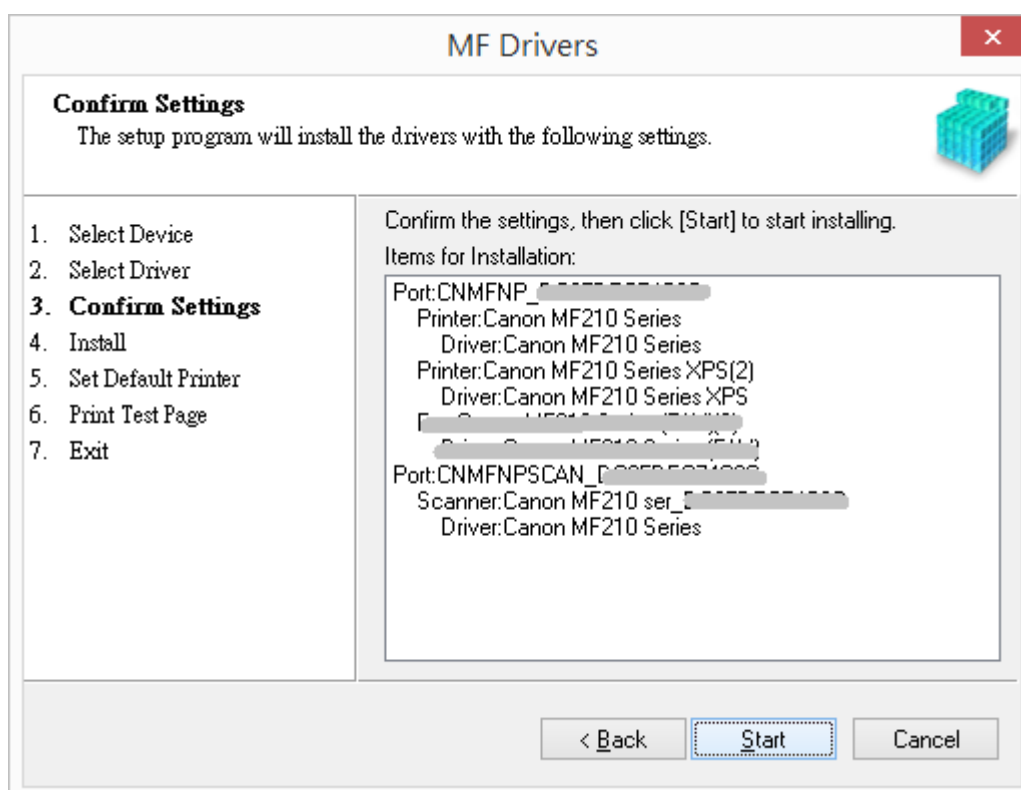
23. 按「下一步」 (Choose “Next”)



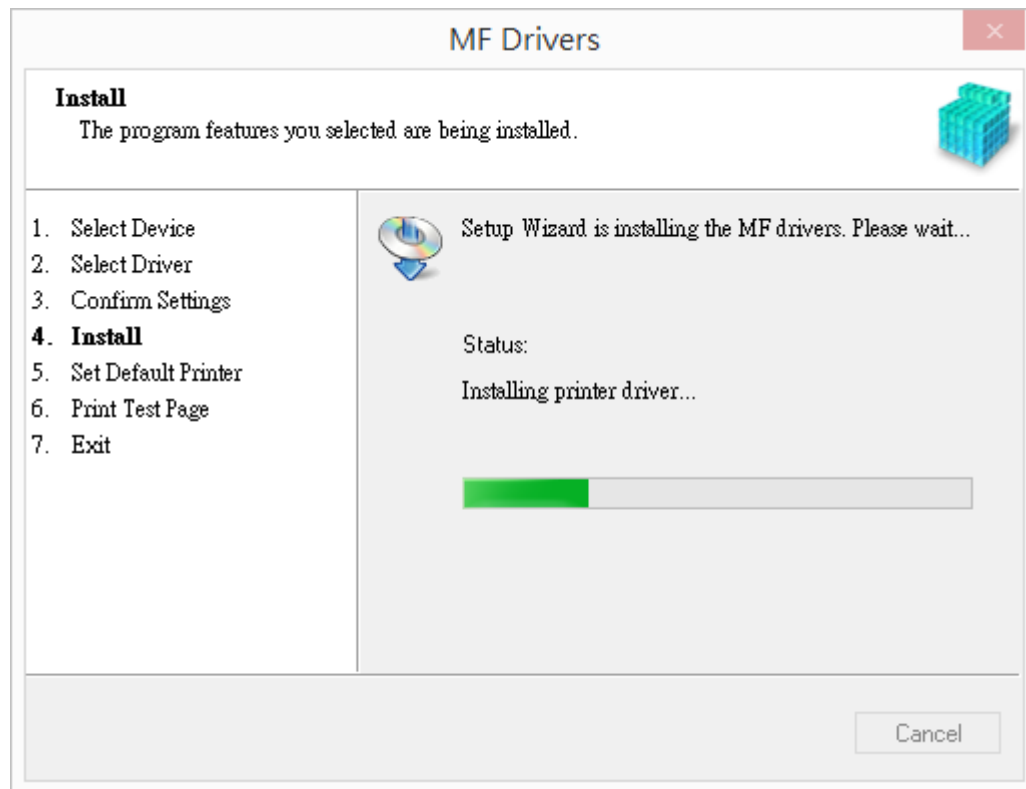
24. 按「下一步」 (Choose “Next”)



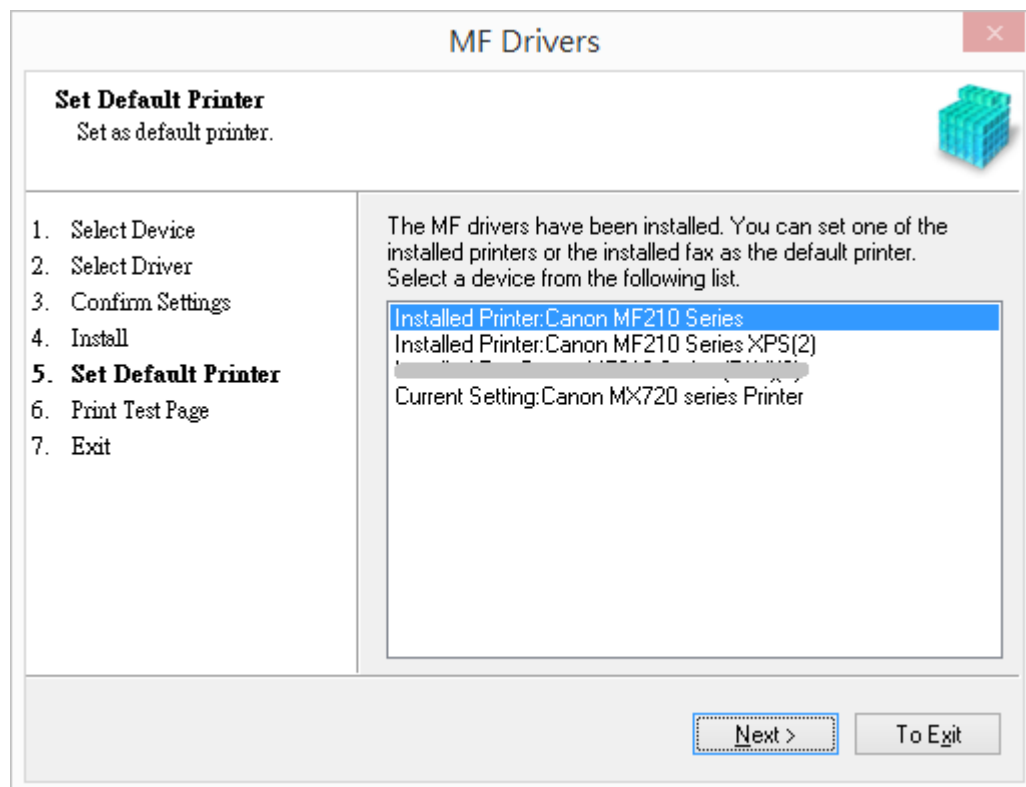
25. 按「啟動」 (Choose “Start”)



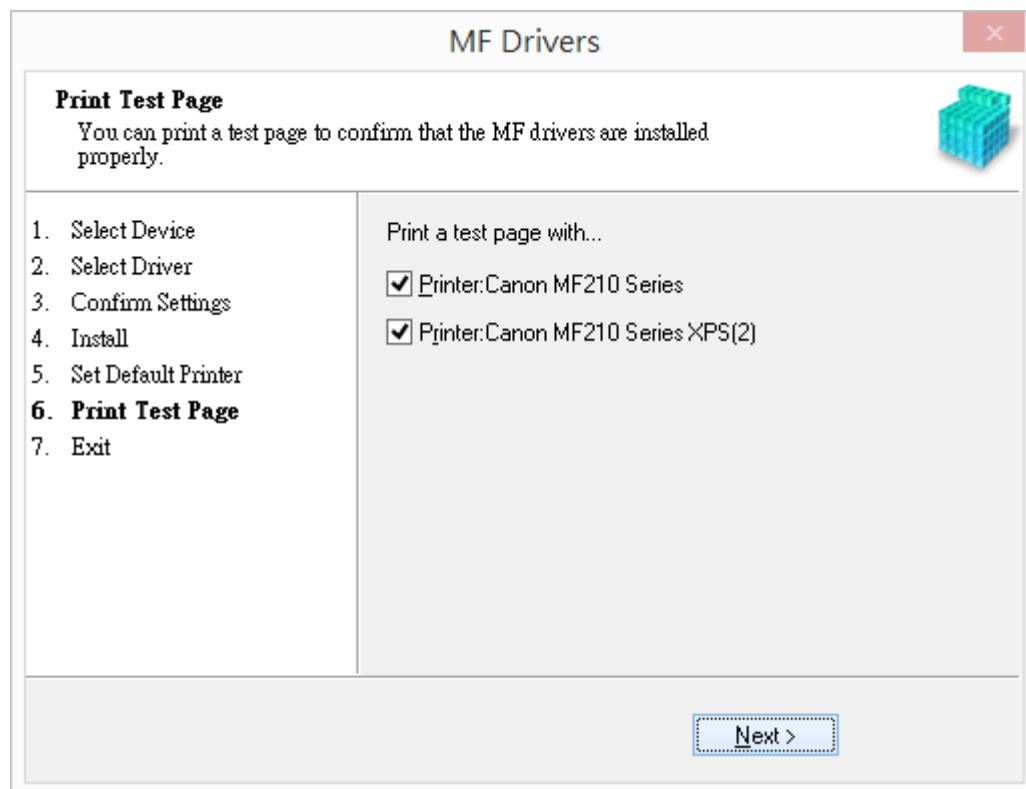
26. 安裝進行中 (Waiting for the installation progress)



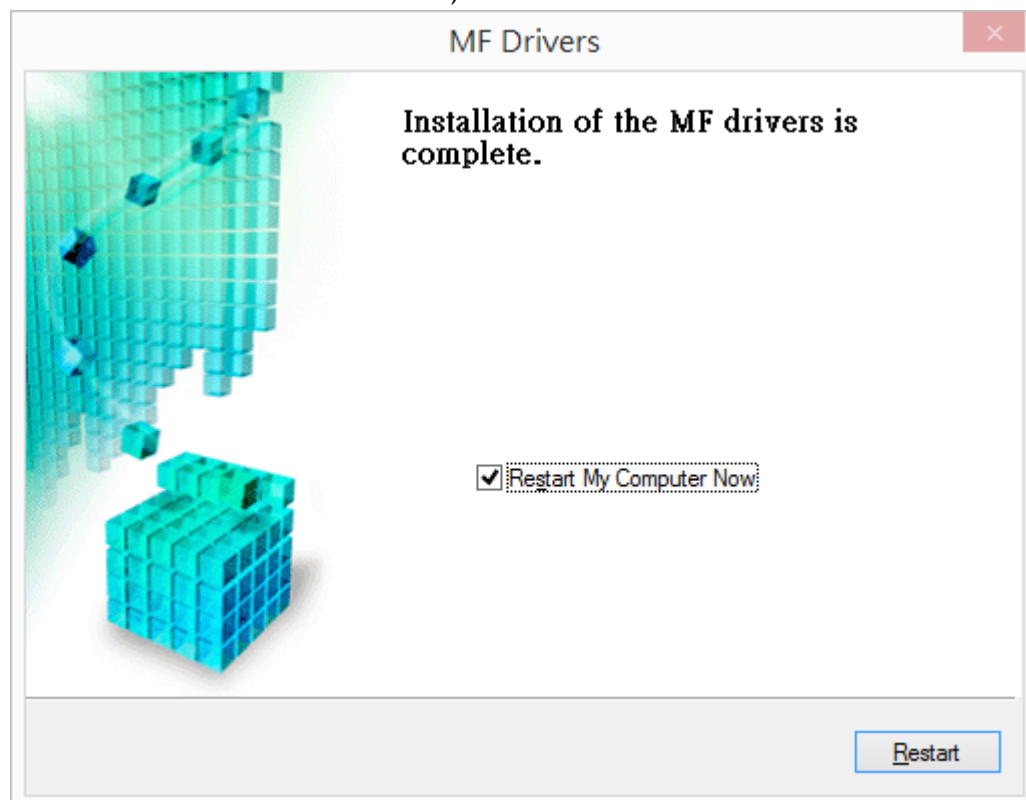
27. 按「下一步」 (Choose "Next")



28. 按「下一步」 (Choose “Next”)



29. 按「Restart」後會自動重啟電腦，完成安裝 (Press 「Restart」 then computer will restart and finish installation)



30. 按電郵的連結下載MF Tool Box程式檔案

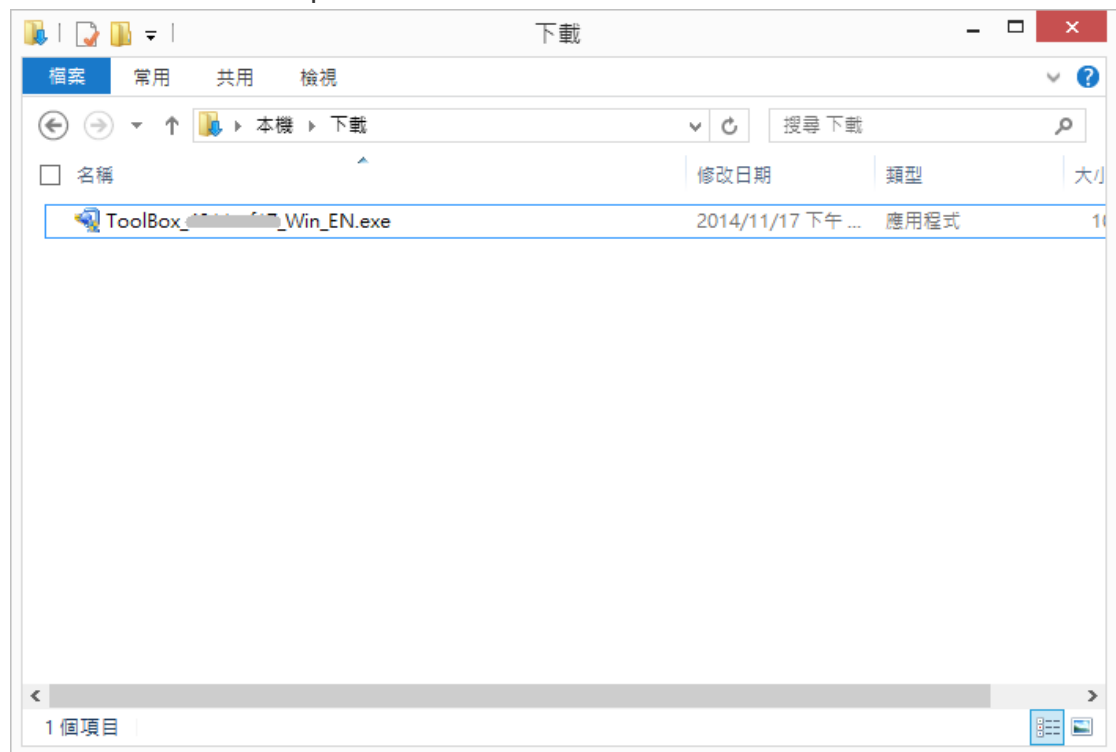
(Click the link on email and download the MF Tool Box)

**** 注意：如瀏覽器詢問「儲存」還是「執行」檔案，請務必選擇「儲存」**

**** Caution: If the browser asks “Run” or “Save”, please click “Save”**

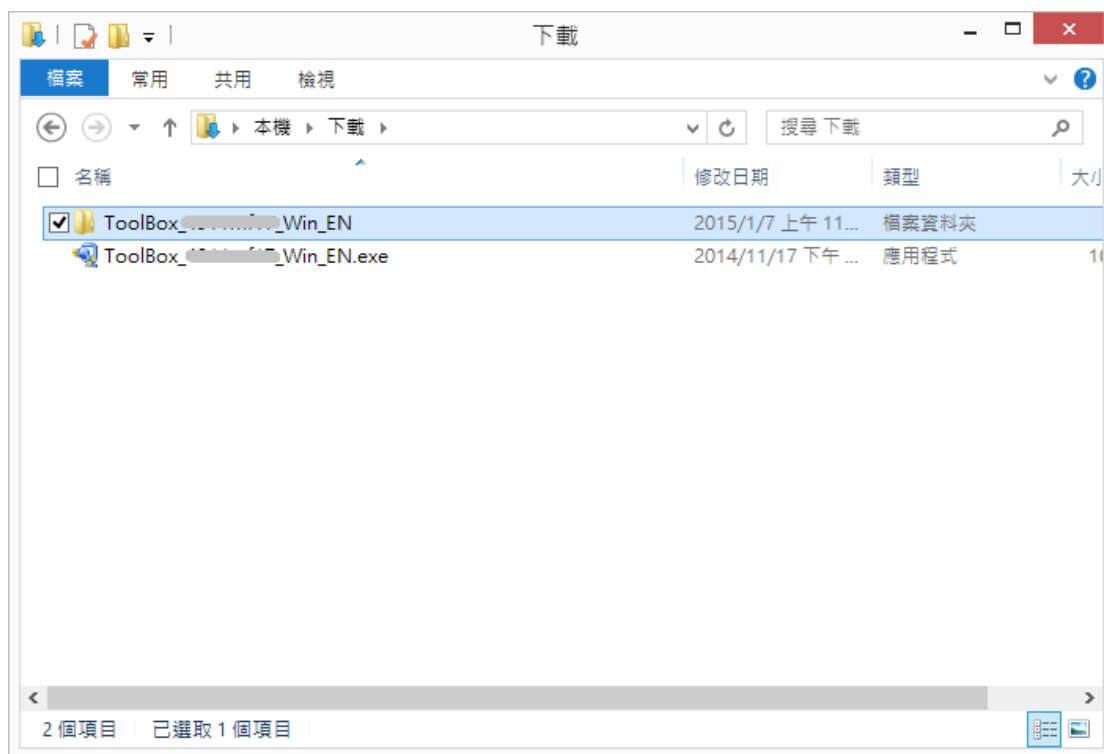
31. 下載的文件以自解壓縮檔檔案（.exe格式）保存在指定的文件夾中。

(The file is saved to specified folder)

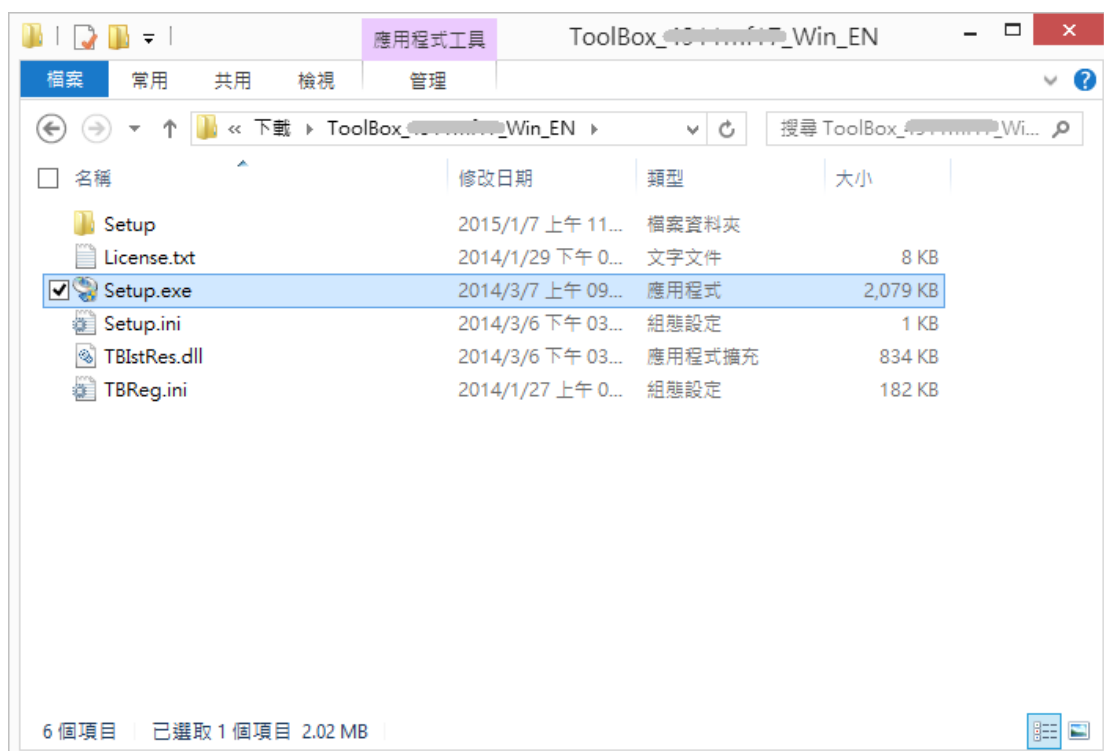


32. 打開文件解壓縮。將在同一文件夾中創建新文件夾。新文件夾的名稱與解壓縮文件的名稱相同。(Open “ToolBox_***.exe”, a new folder will be created.)

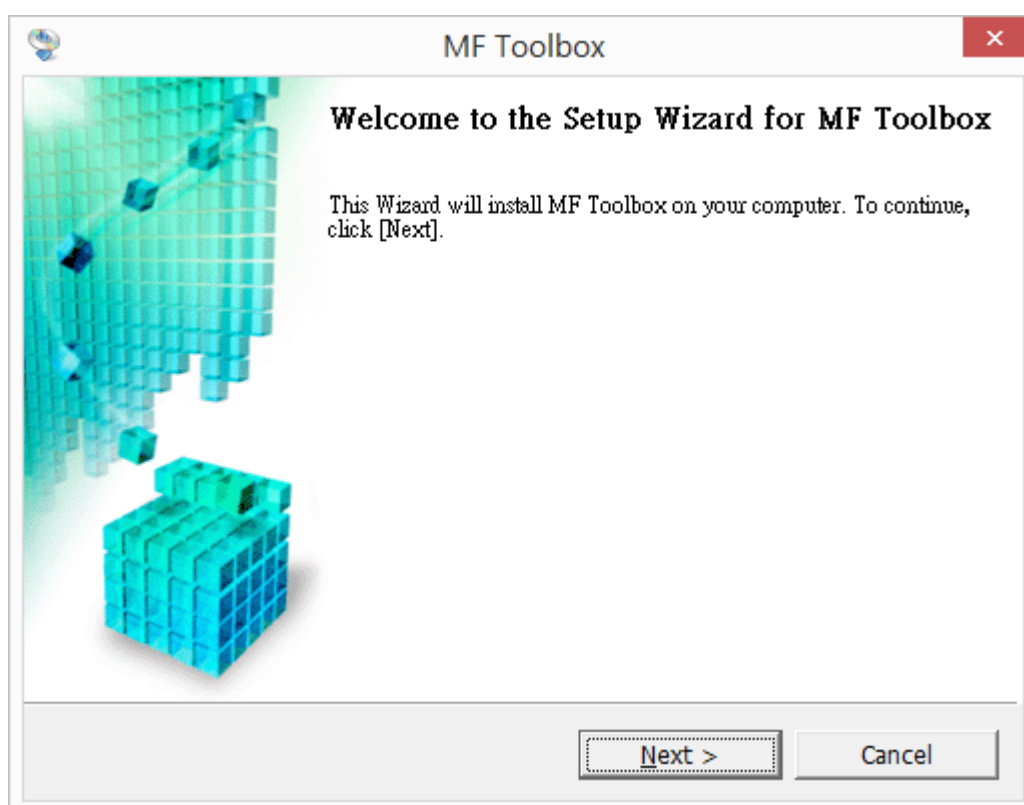
- 如打開文件解壓縮時出現「使用者帳戶控制」選項，請按「是」。(If “User Account Control” window pop-up. Choose “Yes”)



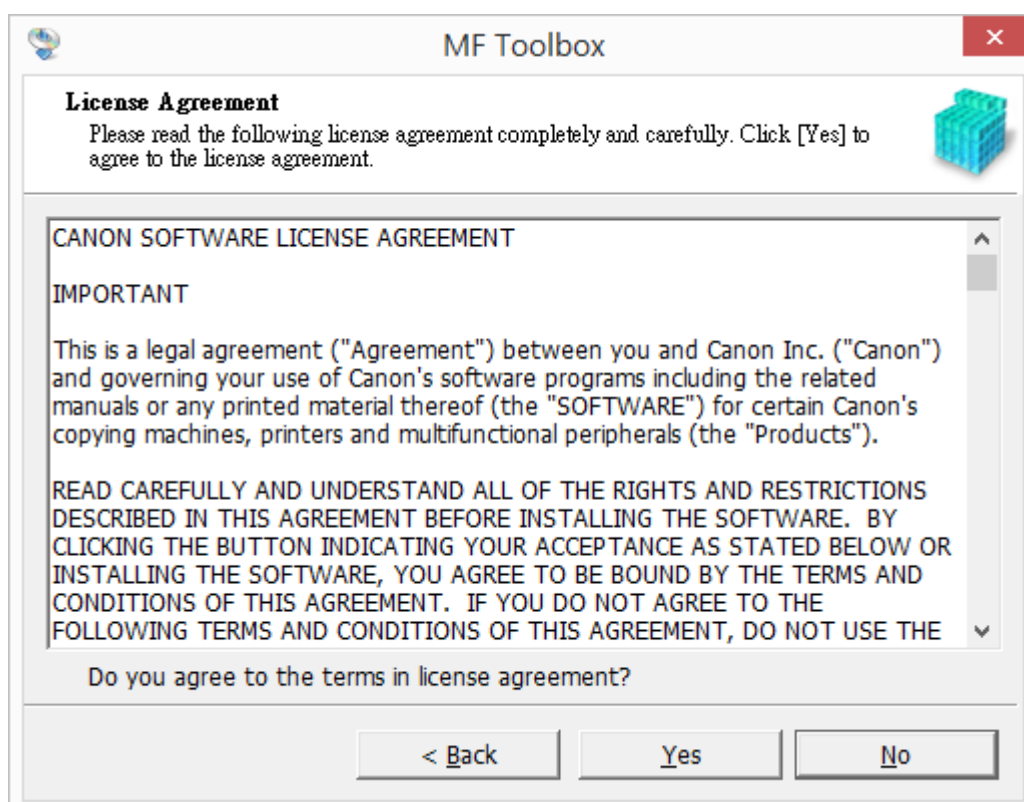
33. 打開解壓縮後的「Setup.exe」文件開始安裝。(Double click / open “Setup.exe”)



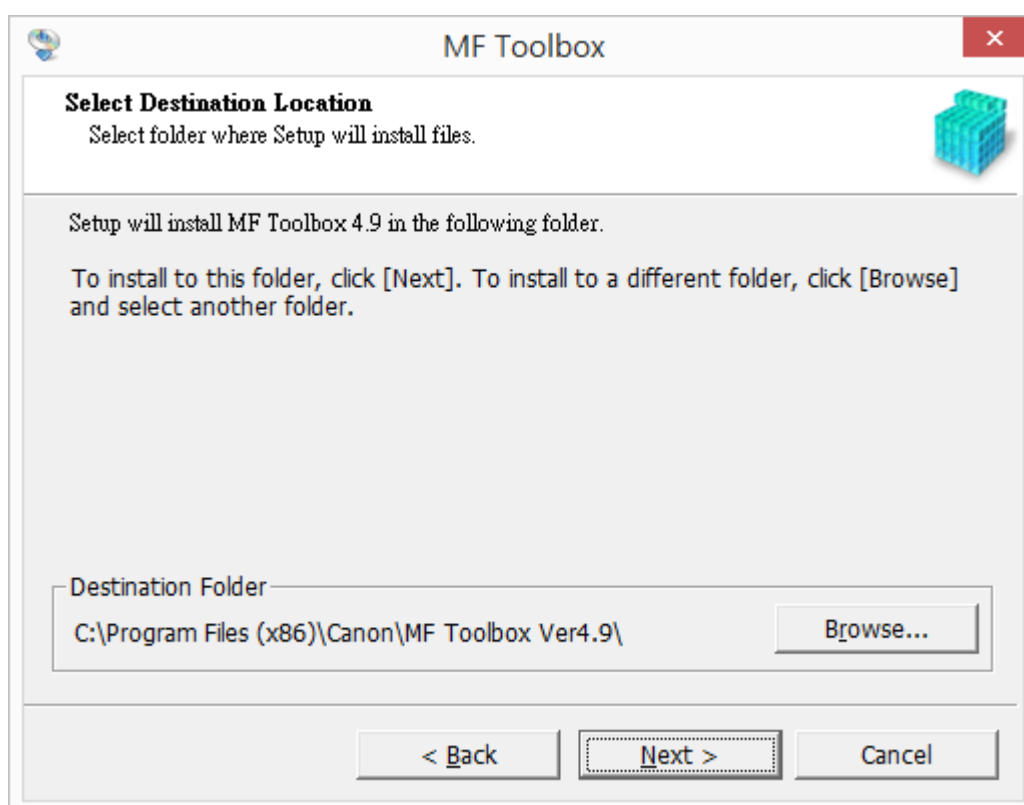
34. 按「下一步」 (Choose "Next")



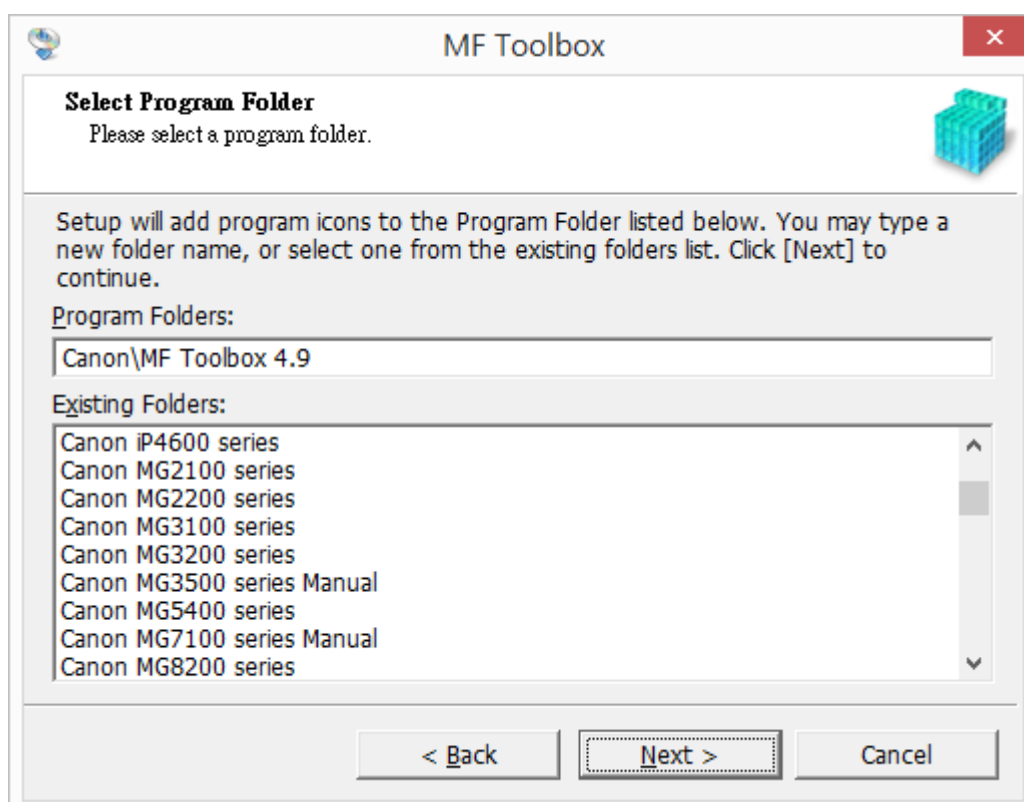
35. 按「是」 (Choose "Yes")



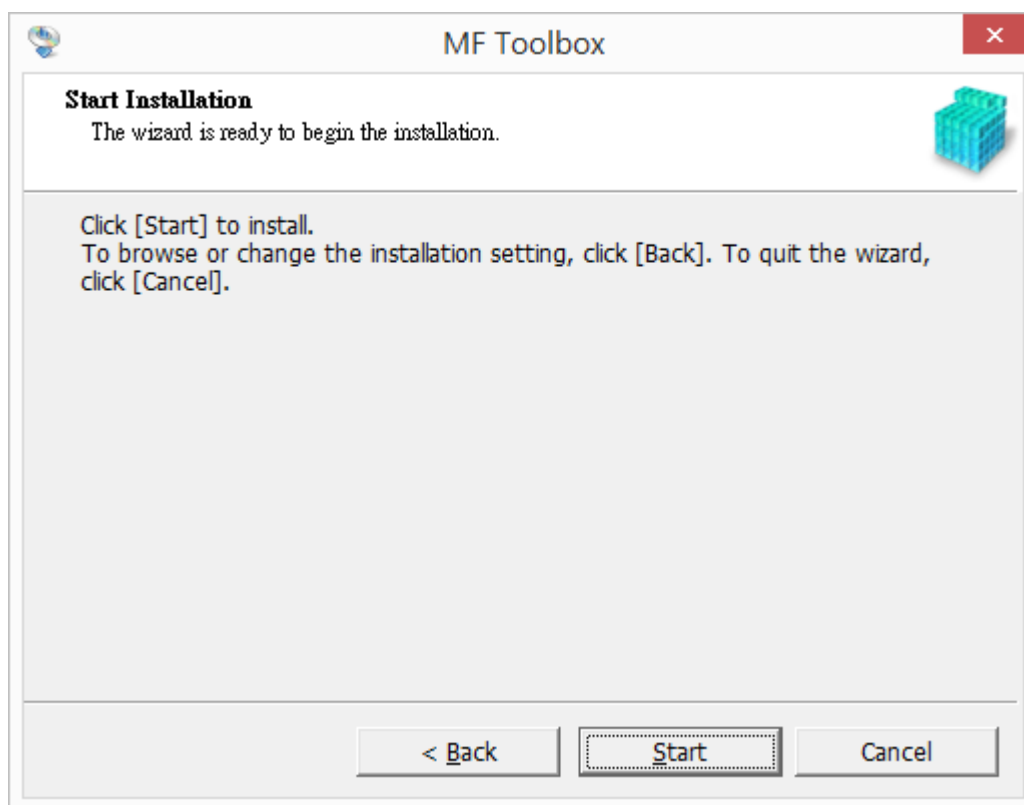
36. 按「下一步」 (Choose “Next”)



37. 按「下一步」 (Choose “Next”)



38. 按「開始」 (Choose “Start”)



39. 按「結束」 (Choose “Exit”)

