

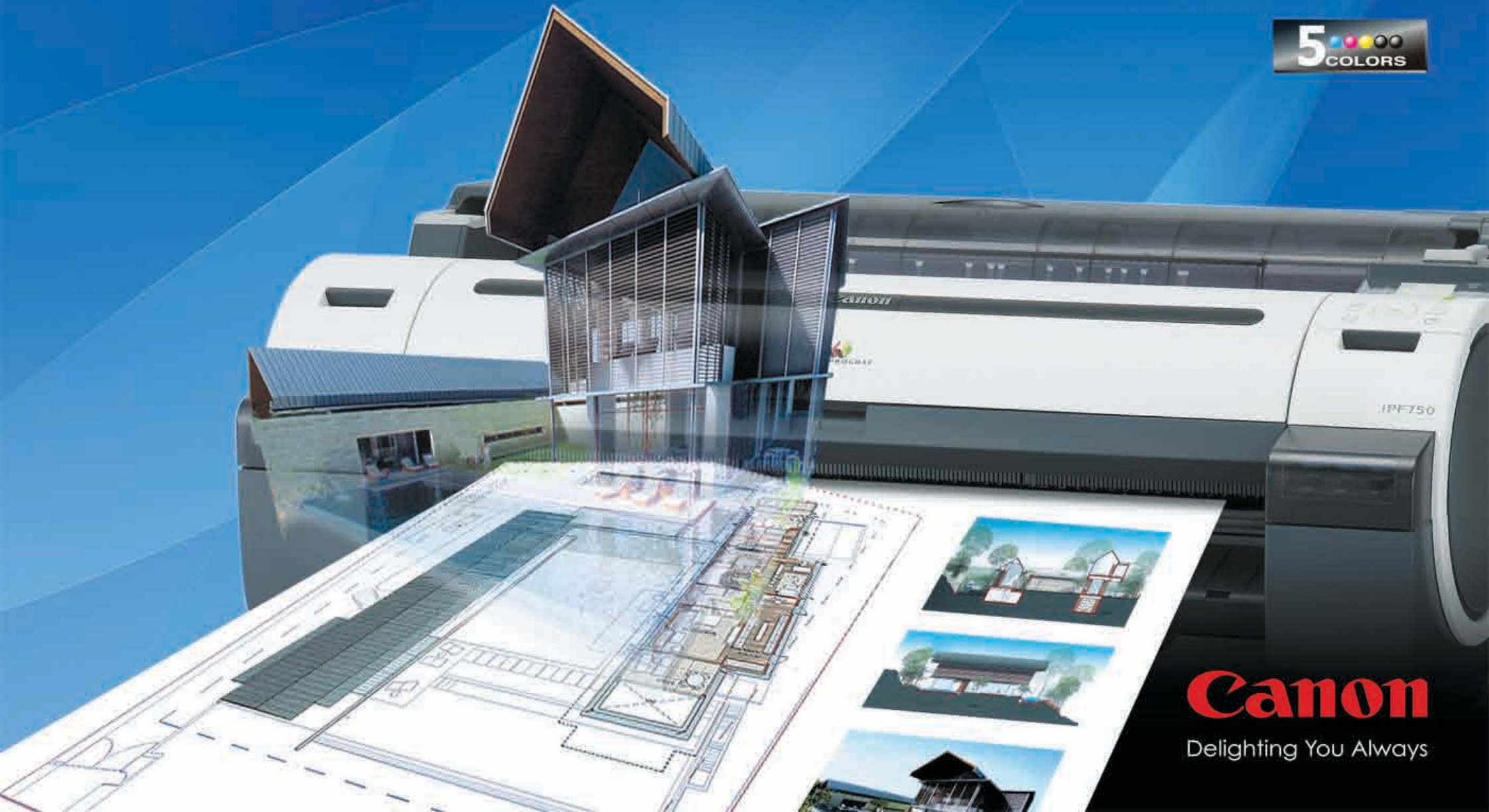
Large Format Printers



imagePROGRAF

iPF650

iPF750



Canon

Delighting You Always

iPF650

Demonstrated ability for high definition CAD and presentation.
A multi-use model that supports A1 sizes.



iPF750

High quality and high speed for CAD, GIS and 3D paths.
An A0 size model that supports the specific needs of design operation.



24" 5 COLORS

Size	Paper	Mode	Print Speed
A1	Plain paper	Draft	Approx. 28 sec.
A1 ^{CAD}	Plain paper	Draft	Approx. 30 sec.

Ease of use

- 130ml Ink Tank
- Roll paper
- Large LCD screen
- HP-GL/2 HP RTL support



Specifications

- Dye pigment reactive ink (New Magenta)
- Maximum Resolution 2400 X 1200 dpi
- Long prints/borderless prints
- Roll paper remaining detection
- Ink level detection
- High Performance Cutter
- Memory 256MB
- Standard I/F: Network/USB 2.0
- Optional I/F: IEEE1394

36" 5 COLORS

Size	Paper	Mode	Print Speed
A0	Plain paper	Draft	Approx. 46 sec.
A0 ^{CAD}	Plain paper	Draft	Approx. 48 sec.

Ease of use

- 130ml Ink Tank
- Roll paper
- Large LCD screen
- HP-GL/2 HP RTL support



Specifications

- Dye pigment reactive ink (New Magenta)
- Maximum Resolution 2400 X 1200 dpi
- Long prints/borderless prints
- Roll paper remaining detection
- Ink level detection
- High Performance Cutter
- Memory 256MB
- Standard I/F: Network/USB 2.0
- Optional I/F: IEEE1394

TECHNOLOGY

Technology that reveals the beauty

High quality from the maximum 2400X1200dpi high resolution

“FINE” high density print head technology

A “FINE” high density print head technology born out of advanced semiconductor manufacturing technology. Achieves a maximum 2400X1200dpi high resolution by being able to express ink droplets that are a miniscule 4 pl (4 billionths of a litre). You get letter quality output with no graininess.



Combining clear letters and lines and vivid colors

5 color - color dye and pigment reactive ink

Black lines and letters can be presented clearly with minimal blurring due to the reaction (reactive) of the pigment “matte black ink” and the dye color inks. This supports a variety of applications from CAD/GIS to the office with the ability to perform the optimum image handling for each individual object of a business document or poster comprised of text, lines, graphs, drawings and pictures.

[5 color - color dye and pigment reactive ink]

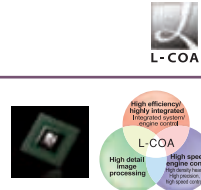


Advanced technology allows faster output

With the intelligence to rapidly handle large volumes of image data

The “L-COA” image processor

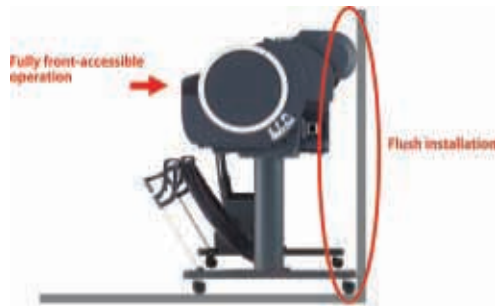
The printer takes advantage of the equipped “L-COA” image processor to provide high speed and high precision image processing and printer control. High resolution and high speed printing is possible, thanks to the advanced accuracy of the image processor and the high density print head technology “FINE”.



Outstanding ease-of-operation

Fully front-accessible operations for improved ease of use **NEW**

Models feature fully front-accessible operations to allow ink replacement, paper loading, and even paper jam clearing to be performed easily from the front. Eliminates the need for rear access, allowing the printer to be installed flush against the wall and offering space savings above and beyond its compact dimensions.



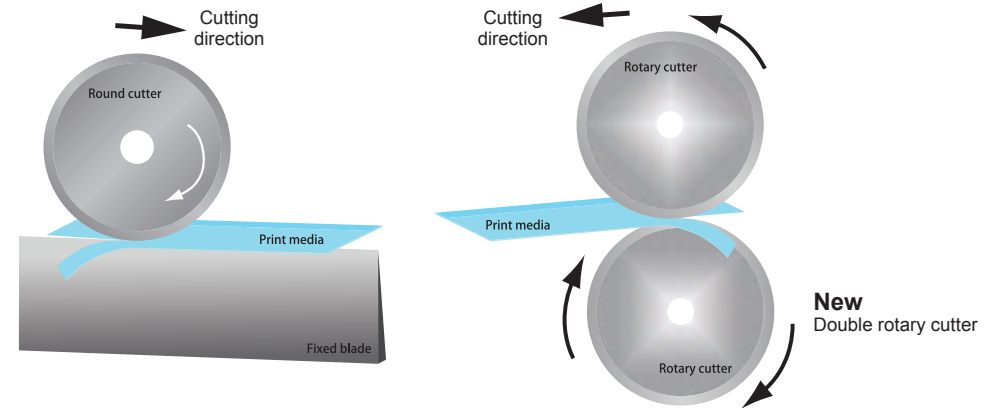
Easy slide-in roll paper loading **NEW**

Features a slide-in loading system in which paper rolls are first placed on top of the printer, then slid in along guide rails. Rolls are loaded at a point easily accessible from the front of the printer for easy loading from a natural posture.



High-productivity for large volume printing

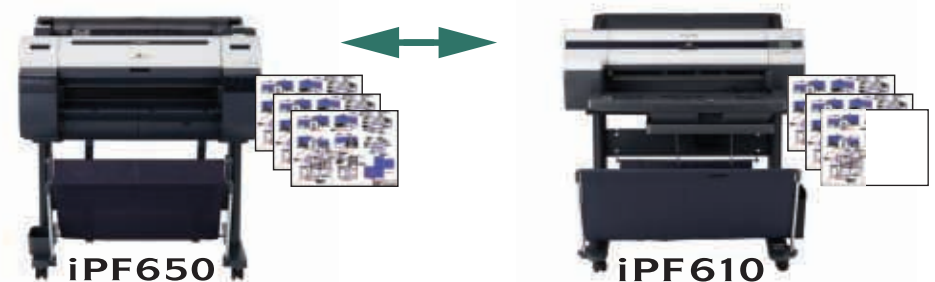
Permanent self-propelled double rotary cutter **NEW**



Higher throughput **NEW**

The carriage on which the printhead is mounted and the paper feed mechanism both feature a faster drive for high-speed printing. One A1-size sheet takes approximately 29 seconds*, while three sheets takes approximately 1 minute and 54 seconds*.

**Using plain paper in Draft mode. Includes paper media cutting times. For iPF610, one sheet takes approximately 33 seconds; three sheets takes approximately 2 minutes and 13 seconds.*



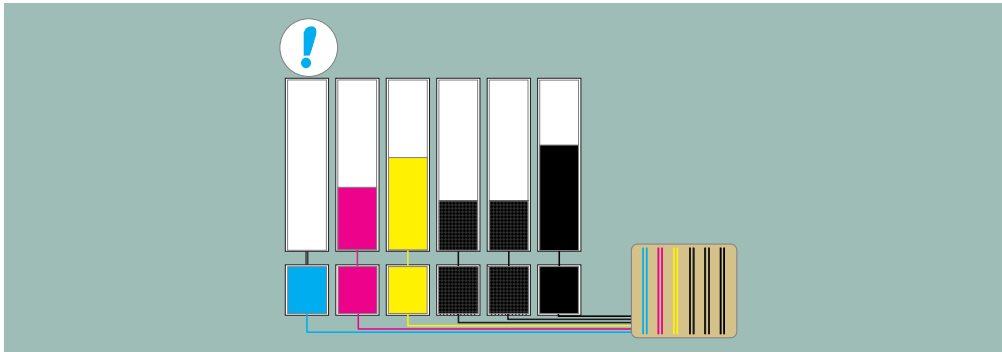
TECHNOLOGY

High-productivity for large volume printing

Allows ink tank replacement without stopping printing **NEW**

First imagePROGRAF 24- and 36-inch models to use individual subtanks for each ink color within the printer. Constantly reserving a preset ink level in the subtank lets users replace ink tanks without having to stop printing. Even when ink runs out unexpectedly, users can continue printing using just the sub tanks. (Example: equivalent to approximately 80 sheets of A1 plain paper for monochrome drawings*.) This also enables full use of ink tank contents, eliminating wasted ink.

* Depends on printing conditions.



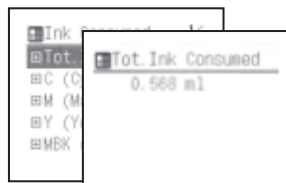
Multi-interface **NEW**

Standard support for Gigabit Ethernet and Hi-Speed USB allows high-speed transfers of large data volumes.

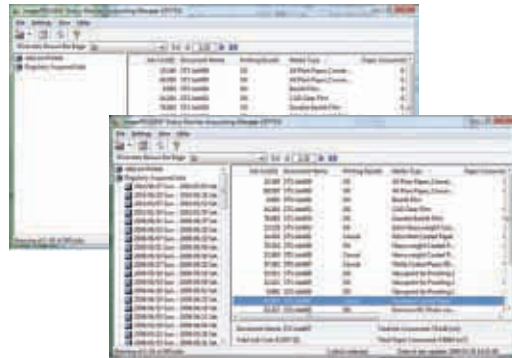
Accounting functions **NEW**

The Status Monitor includes accounting functions to collect printer job log information and calculate printing costs. This collects job logs to identify who printed what document from what printer and calculates the number of pages and sheets printed together with printing costs.

<Job log on printer>



<Statistics and calculations in Status Monitor>



Powerful support for CAD output

imagePROGRAF includes Windows and other dedicated drivers supporting industry-standard CAD application software.

An HDI driver is provided for AutoCAD, which is used for color printing of structural floor plans and perspective drawings in architecture and civil engineering. The printers also include HP-GL/2 for high-end CAD applications such as board wiring layouts in electronics and circuit design, and engineering drawings produced by mechanical design departments in the automotive, aviation, and precision device industries.

Improved CAD print quality **NEW**

Increased line and text visibility and clearer color separation of HP/GL-2 color palette.

Improved visibility of text on colored backgrounds Improved red text

Previous printers	iPF750	Previous printers	iPF750

- Color background is bright (light)
- Yellow background is clear
- ➔ Highly visible black text

High-saturation text is achieved via improved red color reproduction with new magenta ink.

Includes color settings for CAD drawings

Capable of producing output with colors similar to previous imagePROGRAF Series or other CAD inkjet printers, ensuring efficient job output even when used alongside or in place of other printers.

Highly accurate line drawings and text printing using imagePROGRAF printer driver 2009

The imagePROGRAF printer driver 2009 includes two dedicated CAD setting modes to ensure optimum printing of CAD drawings: CAD (Color Line Drawing) and CAD (Monochrome Line Drawing). Likewise, the 1,200 dpi rendering mode and distance accuracy of $\pm 0.1\%^1$ enables high precision of lines, down to a minimum width of 0.02 mm^2 . This makes possible the fine line drawing and text printing demanded for CAD output, producing smoother straight and curved lines and text that remains crisp even at small sizes.

*1: User adjustments necessary. Printing environment and media to be printed must match that used for the adjustments. CAD paper only.

*2: Theoretical value. Results may vary according to data resolution.

Economy printing mode

Includes an Economy printing mode* using approximately half the ink used for Draft mode, useful for checking layouts, etc.

*: Using plain paper, tracing paper, or translucent matte film only. May not be available for certain print quality settings.

TECHNOLOGY

Powerful support for CAD output

Includes the imagePROGRAF HDI driver, a dedicated printer driver for AutoCAD

Comes with a dedicated imagePROGRAF HDI driver for the industry-standard Autodesk AutoCAD used in architecture and design. Users accustomed to printing using HDI/ADI drivers will find print work operations unchanged when using the imagePROGRAF HDI driver.

Supports HP-GL/2 and HP RTL NEW

Supports the HP-GL/2 and HP RTL page description languages used for CAD applications, enabling use with a wide range of CAD applications.

HP-GL/2 pen palette settings

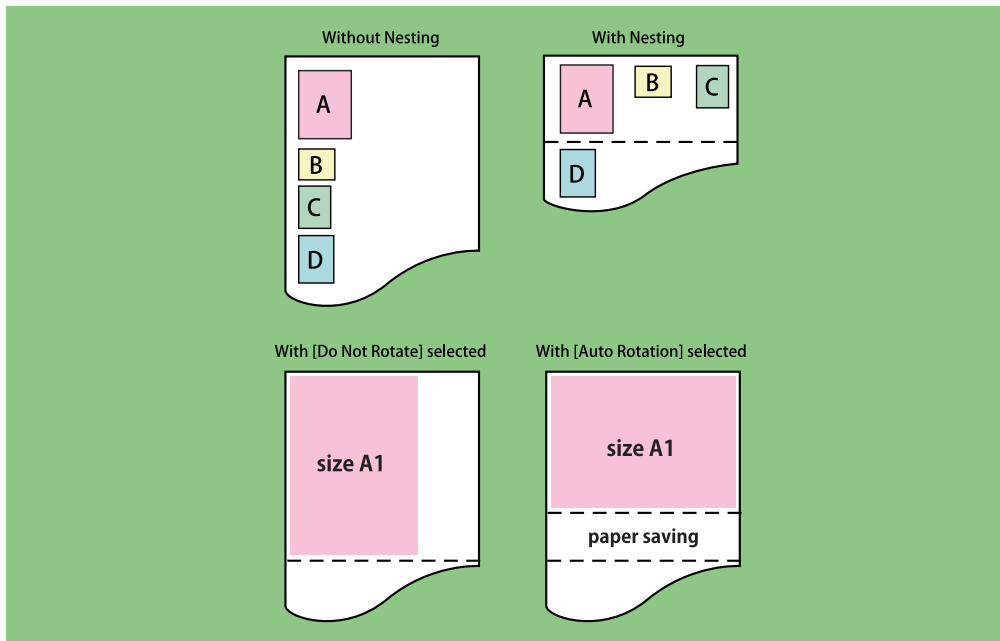
The HP-GL/2 functions have been expanded to include pen settings on the printer operation panel allowing changes in pen line width, color, and intersection shape.

Incorporates Nesting*1 and Auto Rotation*2

The following two functions are included to ensure efficient use of output paper. Nesting*1 allowing printing with minimal paper by efficiently arranging drawing data of various sizes on the roll paper. Auto Rotation*2 to automatically rotate drawing data to suit the output paper width and minimize wasted space when printing.

*1: HP-GL/2 and HP RTL data only

*2: HP-GL/2 data only



SPECIFICATIONS

Item		imagePROGRAF IPF650		imagePROGRAF IPF750	
Ink Type		Dye and pigment reactive ink: BK, MBK x 2, C, M, Y			
Maximum Print Resolution		2400 x 1200 dpi			
Dimensions, Weight (Net) W x D x H (mm), (Kg)	Main unit with a printer stand and Basket	997 (W) x 870 (D) x 1,052 (H) mm Weight: approx. 53.7 kg (roll holder included, no inks, no print heads) (basket: open)		1,304 (W) x 870 (D) x 1,052 (H) mm Weight: approx. 62.9 kg (roll holder included, no inks, no print heads) (basket: open)	
	Main unit with Printer Stand	997 (W) x 698 (D) x 507 (H) mm Weight: approx. 43.4 kg (Main Unit Only)		-	
Dimensions, Weight (Packaged)	Main unit with palette	1,127 (W) x 830 (D) x 762 (H) mm; Weight: 63.0 kg		1,434 (W) x 830 (D) x 770 (H) mm; Weight: approx. 75.1 kg	
	Printer Stand/Basket	1,073 (W) x 766 (D) x 263 (H) mm; Weight: 15.8 kg		1,380 (W) x 760 (D) x 240 (H) mm; Weight: approx. 16.6 kg	
Power Supply	For shipping to USA (All is included in one package with palette)	1,113 (W) x 816 (D) x 263 (H) mm; Weight: 16.1 kg (Printer Stand/Basket only)		1,400 (W) x 780 (D) x 240 (H) mm; Weight: approx. 17.1 kg (Printer Stand/Basket only)	
	Input power	AC 100 - 240 V (50-60 Hz)			
	Power consumption	Operation: 140 W or less			
	Standby power consumption (At the low power mode)	100 V - 120V	5 W or less		6 W or less
	220 V - 240 V	6 W or less		1 W or less (in compliance with Executive Order of the President of the United States of America)	
Power off (standby)					
Operational Environment		Temperature: 15 - 30°C, Humidity: 10 - 80 % (Condensation free)			
Acoustic Noise	Acoustic pressure	Operation: approx. 47 dB (A) (Plain paper, Standard printing mode, Line Drawing/Text) Standby: 35 dB (A) or less Measured in the above conditions, based on ISO 7779		Operation: approx. 50 dB (A) (Plain paper, Standard printing mode, Line Drawing/Text) Standby: 35 dB (A) or less Measured in the above conditions, based on ISO 7779	
	Acoustic power	Operation: approx. 8.6 Bels (Plain paper, Standard printing mode, Line Drawing/Text) Measured in the above conditions, based on ISO 7779		Operation: approx. 8.6 Bels (Plain paper, Standard printing mode, Line Drawing/Text) Measured in the above conditions, based on ISO 7779	
Memory	Standard memory	256 MB			
Interface	USB	Type	Built-in		
		Mode	Full Speed (12 Mbit/sec), High Speed (480 Mbit/sec), Bulk transfer		
	Ethernet	Connector type	Series B (4 pins)		
		Type	Built-in		
Standard	IEEE 802.3 10base-T IEEE 802.3u 100base-TX / Auto-Negotiation IEEE 802.3ab 1000base-T / Auto-Negotiation IEEE 802.3x Full Duplex				
	Protocol	IPX/SPX (Netware 4.2/J), SLP, 6.0UJ) SNMP (Canon MIB supported), HTTP, TCP/IP (IPv4/IPv6), AppleTalk			
Media Handling					
Media Feed and Output	Roll paper	1 Roll, Top-loading, Front Output			
	Manual feed (1 sheet)	Top-feeding, front output (Manual feed using media locking lever)			
	Paper path switch (roll/cut sheet)	Manually switchable by user			
	Delivery direction	Face-up, front side			
Maximum stacking number of delivered prints	- 1 sheet: In case of the regular basket position. - 20 sheets: In case the basket is positioned so that delivered prints are draped over and piled up. (Measurement condition: Plain paper PDSK, RUPH, recycled plain paper; measured at normal temperature and normal humidity, the printed image equivalent to the Cottage, A1 or 24" x 36")		- 1 sheet: In case of the regular basket position. - 20 sheets: In case the basket is positioned so that delivered prints are draped over and piled up. (Measurement condition: Plain paper PDSK, RUPH, recycled plain paper; measured at normal temperature and normal humidity, the printed image equivalent to the Cottage, A0 or 36"x48")		
	ISO - A3, A2, A2+, A1, JIS - B4, B2, ARCH - 24" Others - 10", 14", 16", 17", Banner (300 mm)		ISO - A3, A2, A2+, A1, A0, JIS - B4, B2, B1, ARCH - 24", 30", 36" Others - 10", 14", 16", 17", Banner (300 mm)		
Media Size	Roll paper (width)	ISO - A3, A2, A2+, A1, JIS - B4, B2, ARCH - 24" Others - 10", 14", 16", 17", Banner (300 mm)		ISO - A3, A2, A2+, A1, A0, B4, B3, B2, B1, DIN - C4, C3, C2, C1, CO, JIS - B4, B3, B2, B1, ANSI - 8.5x11", 8.5x14", 11x17", 13x19", 17x22", 22x34", ARCH - 9x12", 12x18", 18x24", 24x36", Photo - 20x24", 18x22", 14x17", 12x16", 10x12", 10x15", 16x20" (US Photo size) Poster - 20x30", 300x600 mm Others - 13x22"	
Media Thickness	Roll paper	0.07 - 0.8 mm			
	Cut sheet				
Maximum Outside Diameter of Roll Paper	150 mm				
Media Core Size	Internal diameter of roll core: 2" / 3"				
Media Width	Roll paper	254 (10") - 609.6 (24") mm		254 (10") - 914.4 (36") mm	
	Cut sheet	Manual feed from the top	203.2 (8") - 609.6 (24") mm		203.2 (8") - 914.4 (36") mm
		Manual feed from the front			
Minimal Printable Paper Length	Roll paper	203.2 mm (8") (Regular Format Size - Vertical)			
	Cut sheet	279.4 mm (11") Letter size (long side) (Regular Format Size - Vertical)			
Maximum Printable Paper Length	Roll paper	18 m (Varies according to the OS and application)			
	Cut sheet	1.6 m (Varies according to the OS and application)			
Margins	Recommended area	Roll paper	Left: 5 mm, Right: 5 mm, Top: 20 mm, Bottom: 5 mm		
		Cut sheet	Left: 5 mm, Right: 5 mm, Top: 20 mm, Bottom: 23 mm		
	Printable area	Roll paper	Left: 3 mm, Right: 3 mm, Top: 3 mm, Bottom: 3 mm		
		Roll paper (borderless print)	Left: 0 mm, Right: 0 mm, Top: 0 mm, Bottom: 0 mm		
Cut sheet	Left: 3 mm, Right: 3 mm, Top: 3 mm, Bottom: 23 mm				
Borderless Printing	Media width	10" (254 mm), B4 (257 mm), A3 (297 mm), Banner (300 mm), 14" (356 mm), A2 (420 mm), A2+17" (432 mm), B2 (515 mm), A1 (594 mm), 24" (610 mm)		10" (254 mm), B4 (257 mm), A3 (297 mm), Banner (300 mm), 14" (356 mm), A2 (420 mm), A2+17" (432 mm), B2 (515 mm), A1 (594 mm), 24" (610 mm), B1 (728 mm), A0 (841 mm), 36" (914 mm)	
Paper Type	Plain Paper	Paper Quality	Print Speed		Paper Quality
		Draft (300 dpi)	0.47 min		Draft (300 dpi)
		Standard (600 dpi)	0.87 min		Standard (600 dpi)
				Print Speed	
				0.77 min	
				1.52 min	
External Dimensions					



Delighting You Always

CANON HONGKONG COMPANY LTD.

19/F., The Metropolis Tower, 10 Metropolis Drive,
Hung Hom, Kowloon, Hong Kong
Hotline: 3191 2388
Website: <http://www.canon.com.hk>

CANON MARKETING (PHILIPPINES), INC.

Ground Floor Commerce and Industry Plaza.,
Campus Ave. cor. Park Ave., McKinley Hill,
Fort Bonifacio, Taguig City
Tel: (632) 884-9000 Fax: (632) 894-4174
Website: <http://www.canon.com.ph>

© CANON HONGKONG CO., LTD. 2010
Printed in Hong Kong
0143W616