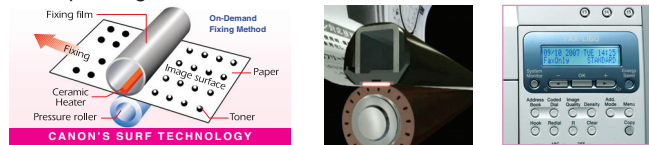


Virtually no warm-up time and lower energy costs

The Energy Star-compliant L160 employs Canon's **On-Demand SURF (Surface Rapid Fixing) Printing Technology**, which means virtually no waiting and warm-up time is required. This also reduces energy consumption and lowers operating costs.



It also features **hassle-free, FX9 All-in-one cartridges, Dual Access** and **shortcut buttons** for convenient usage.



Save costs while caring for the environment

Send the message that you care for the environment by choosing the L160. This RoHS-compliant device does not contain any harmful substances that can pollute your working environment and cause harm to the human body.



On 24/7 without the pinch

If you receive faxes round the clock, utility bills are surely a concern. With the L160's power consumption of **approximately 3W** in Sleep Mode, you can rely on this machine to keep operating costs low and help you save big time in the long term.

Compact in size but not in memory

The L160's new operational panel with an LCD backlight improves clarity, while its compact design is suitable for even the most space-challenged of offices. It also has a large fax memory capacity of up to **346 pages**, so you won't miss a fax even when you run out of paper.



Your versatile office partner

Keys to a successful business are good time management, efficiency and clear communication – and you can trust the L160 to handle these well, through quality documents and reliable sharing techniques. The L160 is also a dependable printer stand-in should your office printer break down.

Fast, Clear & Efficient

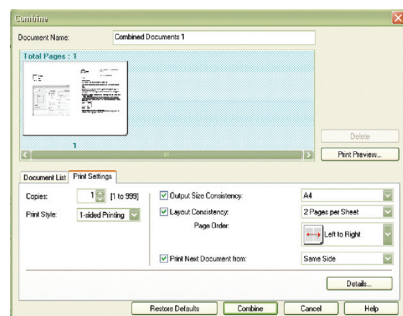
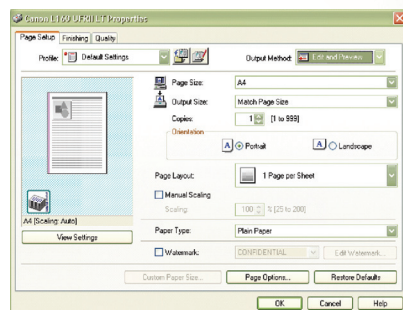


A **Super-G3** fax modem and UHQ™ image processing system ensures fast, clear transmissions at **3 secs per page**. Plus, a manual zooming function allows images to be enlarged / reduced between **50% and 200%**. In addition, you can copy multi-page documents at a fast **12 cpm** and send lengthy faxes, thanks to the built-in **30-sheet Auto Document Feeder**. In addition, there is a **Confidential Fax Transmission** feature which allows documents to be sent to a confidential mailbox, thereby improving security.

Compose your pages with Canon PDL

The L160 also employs the UFR II Lite printer language system, which makes it **compatible with operating systems such as Windows 98, Me, 2000, XP, Vista** as well as **Server 2003**. Plus, its improved printing speed can churn out documents at a fast **14 pages/minute** with virtually no waiting time.

Best of all, the L160 features Canon's Unique **Page Composer** printing feature, which allows you to compile files of different applications into a single document before printing. It can also accommodate a wide range of page sizes – including unusual sizes such as foolscap – to suit various business needs.



Be smart, be genuine

Canon's **FX9 all-in-one cartridges** make cartridge replacement as easy as 1-2-3 – all parts that require frequent maintenance such as the drum, charging unit, cleaner and developer along with the toner reservoir are integrated into a single unit for hassle-free replacement. Genuine Canon consumables also ensure your Canon devices are protected and that you get **optimum performance** and **warranty assurance** from Canon.



L 1 6 0

Specifications



Fax	
Programmable Numbers	
One-Touch Dials	15 locations
Coded Dials	100 locations
Group Dials	15 Groups (50 locations per group)
Paper Handling	
Auto Document Feeder	30-sheet (A4) / 10-sheet (LGL)
Auto Sheet Feeder (Tray)	150-sheet (Up to LGL, 80g/m)
Output Tray Capacity	100-sheet (A4 or LTR, 75g/m)
Print Width	Up to LGL
Paper Size	A4, B5, A5, Letter, Legal, Executive, Envelope, Follo, Foolscap
Paper Type	Plain paper (64 to 90 g/m ²), Heavy paper (105 to 163 g/m ²), Transparency

Fax Transmission Features	
Fax Modem	Super-G3, 33.6kbps
Transmission Speed	Approx. 3 seconds/page
Compression/Coding System	MH, MR, MMR
Fax Resolution (Tx/Rx)	8 pels/mm x 3.85 lines/mm (Standard) 8 pels/mm x 7.7 lines/mm (Fine/Photo) 8 pels/mm x 15.4 lines/mm (Super Fine)
Fax Printing Resolution	600 x 600dpi
Fax Scanning Speed	2.6 sec / page (Std, Fine)
Greyscale Level	256 level
Density Adjustment level	9 levels
Transmission Header	Yes
Error Correction Mode	Yes
Memory Transmission	Yes
Direct Transmission at Full Memory	No
Sequential Broadcasting	131 locations
Delayed Transmission	Yes (131 locations, 1 pre-set time)
Confidential Transmission	Yes (by sub-address)
Relay Broadcasting	Yes (By sub-address)
Polling	Yes (Tx & Rx)
Memory Polling	Yes (by subaddress, password)
Selective Polling	Yes (by subaddress, password)

Fax Reception Features	
Receiving Mode	Fax Only, Manual, Answering Machine, Fax / Tel Auto Switch
Reception Footer	Yes
Auto Receive Image Reduction	Yes (75-100%)
Collation	Yes
DM Preventive Function	Yes
Caller ID	No
Remote Reception	Yes (code: 25)
Fax Memory Reception	Up to 346 pages (5.7MB)
Memory Backup	No
Auto Memory Output	Yes
Memory Lock Reception	Yes (time-setting possible)
Dual Access	Yes (256 pages max reservation)
Extension Phone Hook-up	Yes
Answering Machine Hook-up	Yes
On-Hook Key	Yes
System Management Password	Yes
Low Toner Continue Printing	Yes

Report List	
Activity Report	Yes (Result, Non-Delivery, Management); 60 transactions/list
Reception Report	Yes
Transmission Report	Yes

Copy	
Copy Speed	12cpm (A4) / 13cpm (LTR)
Multiple Copies	1 – 99 copies
Zooming Ratio	50 – 200%
Exposure Adjustment	9 levels
Auto Background Control	Yes
Copy Resolution	Text, Photo, Text Photo
Copy Scan Resolution	200 x 300dpi
First Copy Output Time	Less than 23 sec. (A4)
Energy Saver Key	Yes
Collate Copy	Yes

PC Print	
Printing Method	Laser Beam Printing (Monochrome)
Printing System	UFR II Lite
Connectivity	USB 2.0 Hi-speed
Print Speed	14 ppm (A4) / 15ppm (LTR)
Printing Resolution	600 x 600dpi
Image Memory	16MB
OS Compatibility	Win 98/ Me/ 2000/ XP/ Server 2003/ Vista

General Specifications	
Main RAM	16MB
LCD Backlight	Yes
Power Consumption	Sleep: approx. 3w Standby: 8w or less Max: 700w or less
Power Source	220-240V / 50-60Hz
Machine Dimension (W x D x H)	400 x 386 x 221mm
Weight	approx. 8kg (without cartridge)
Languages	16 languages
Telephone	Optional Handset Kit
Acoustic Noise Level	Standby: 30 dB or less In Operation: 50 dB or less
Energy Saving Mode	Yes (Energy Star®)
RoHS Compliant	Yes
Consumables	FX9 cartridge (2000 pages* yield)

* Machine comes with Starter FX9 cartridge, yield up to 1000 pages
* Yield is based on A4, 5% coverage



All information contained in this brochure is correct at the time of printing. Some information could become dated due to product improvements or other changes. Canon bears no responsibility for any discrepancies.