

# Canon



The Digital Camcorder  
for Every Occasion

Mini DV



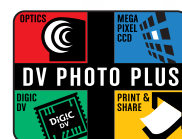
MVX250i



MVX200i



**DiG!C**  
DV





Life is full of special occasions that we wish we could savor forever. With Canon's new MVX200 series camcorders, the moment never has to end. Busy at work are Genuine Canon Optics and a robust Megapixel image sensor, so all the excitement of a graduation ceremony, the tears of joy on a bride's face, and the sweet music of a child's piano recital can be brilliantly captured and enjoyed for many years to come. Canon's exclusive DIGIC DV image processor produces stunning video and photo quality, allowing you to relive the magic and journey back in time. Create home movies with life-like clarity. And with the camcorder's Print & Share feature, beautiful digital photos can be direct printed for loved ones or sent to a computer by a single click of a button. Offering an ultra-slim design and an affordable price, they perfectly fit your hand and your budget. With so much versatility at your fingertips, Canon's MVX200 series camcorders make it easy for the past to become your present.



*MVX250i*

**DIGIC DV**

DIGIC DV is a system for achieving superior video and photographic images. Canon's expertise in imaging and electronics is flawlessly blended together, resulting in outstanding performance. It offers substantial benefits in color reproduction. DIGIC DV makes it possible to achieve accurate color for both video and digital photos. Since video and photos have different color requirements, DIGIC DV utilizes two different color techniques to maximize video quality on a TV and still image quality for print or computer display.



**VIC**

Embracing the industry's latest and most sophisticated technology, Canon camcorders feature an exclusive connection circuit, called VIC. VIC is a virtual powerhouse. Traditionally, multiple chips were needed to perform the camcorder's input and output functions. However VIC manages it all with one single chip. The result is seamless connectivity whether you are connecting to a computer, TV, or VCR.

**DV Photo Plus**

Canon's DV Photo Plus achieves premium quality video and photos by combining four features: Genuine Canon Optics, a Mega Pixel CCD image sensor, DIGIC DV image processor and Print & Share. The moment you watch video on a TV or hold a print in your hand, the difference is clear. DV Photo Plus unleashes the full digital imaging power of your Canon camcorder, promising a superior level of clarity, color, and excellence to video and photos.



Pictures simulated

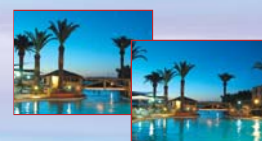
*MVX200i*



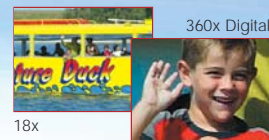
## Genuine Canon Optics: 18x Optical Zoom Lens (MVX250i) 14x Optical Zoom Lens (MVX200i)

**18x/360x**  
**14x/280x**  
OPTICAL ZOOM/DIGITAL ZOOM

What sets a Canon camcorder apart from all the others? It's the only camcorder made by a company renowned for high-quality professional optics. Our vast expertise in designing and crafting precision lenses for 35mm and broadcast TV cameras also goes into every camcorder lens we make. The MVX250i and MVX200i's optical zoom lens delivers superb definition and contrast, taking full advantage of the DV format. The digital zoom extends the camcorder's magnification revealing details too small to see with the naked eye.



When attaching the Wide Attachment 0.7x to the MVX250i



18x

360x Digital

## Image Stabilizer

A high quality image stabilization system corrects camcorder shake instantly, so your videos always look smooth, steady and natural even when shooting hand-held at full telephoto.

## IMAGE STABILIZER

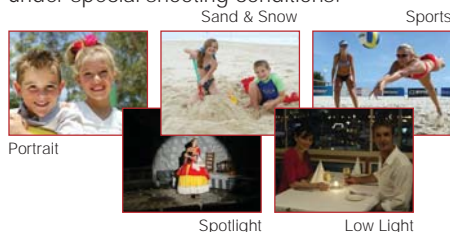


Image Stabilizer ON

Image Stabilizer OFF

## Program Auto Exposure

While the Easy Recording mode is fine for most shooting situations, the camcorder also includes additional pre-programmed auto exposure modes (Auto, Sports, Portrait, Spotlight, Sand & Snow and Low Light mode), each carefully designed to give you the best possible image results under special shooting conditions.



## Night Mode

In the Night mode, the camcorder selects the ideal shutter speed and sensitivity combination to brighten up the scene, without sacrificing color. The Night mode can be easily activated by one press of the NIGHT MODE button. With the MVX250i, you can also assign the Super Night or Night Plus mode to the NIGHT MODE button. In the Super Night mode, the assist lamp lights up automatically responding to the brightness of the subject. In the Night Plus mode, the assist lamp can be turned on, and stay on as long as you choose.



Night

## Skin Detail Function

When shooting close-ups of people, the camcorder automatically softens details to reduce the appearance of skin imperfections for a more complimentary appearance.

## IEEE1394 DV Terminal



An IEEE1394-compliant DV terminal lets you connect the camcorder to a DV-compatible computer or another Canon DV camcorder. Transfer your digital movies to your computer's hard disk, edit your scenes, then use them to create high-impact Web sites, video e-mail, interactive CDs and DVDs, or a personal video album.



canon connects  
plug and edit

## Picture Transfer Protocol (PTP)

The camcorders support Picture Transfer Protocol (PTP) that enables data communication with a computer without the need to install dedicated driver software. This direct link enables the computer to access the camcorder as though it was an external card reader. This feature is available only with computers running Windows XP or Mac OS X (version 10.1 or later) operating system.

## USB Terminal

Allows high-speed transfer of images from your SD Memory Card or MultiMediaCard to your computer. By using the USB cable and software provided, you can process and organize your images on your PC.



## Included Software

The MVX250i and MVX200i Kit includes software for image management and editing: **ZoomBrowser EX** (Windows) and **ImageBrowser** (Macintosh) which let you easily download, browse, archive, and retouch your photos. Automatically resize images and attach them to e-mail, arrange them for printing, and add text.

## Print/Share Button



The Print/Share button makes direct printing and downloading images to a computer easier than ever before. When the camcorder is connected to a printer, the Print/Share button lights up blue, letting you know that you can begin printing simply by pressing it once. You can also transfer a photo directly to your computer, with just a single press of the button.



## DV Messenger2



With **DV Messenger2**, you can use your Canon camcorder for Internet Video Chat with Microsoft Windows Messenger through IEEE1394. Control the zoom and focus of your camcorder or the person you are chatting with. Preview thumbnails and transfer photos. Watch and control the video playback of either camcorder - all from your computer. When used in conjunction with the camcorder's NETWORK mode, you can access your camcorder at home from a remote location. NETWORK mode also makes it possible to switch either camcorder's mode (CAMERA to VCR, TAPE to CARD) through the computer, instead of manually switching it on the camcorder.

## Analog Line-In/Converter

You can send an analog video signal from a TV, VCR or a camcorder into the MVX250i or MVX200i and record it onto a DV tape, or convert the analog signal into digital signal, for direct transfer to digital video devices or computers equipped with a IEEE1394 terminal\*.

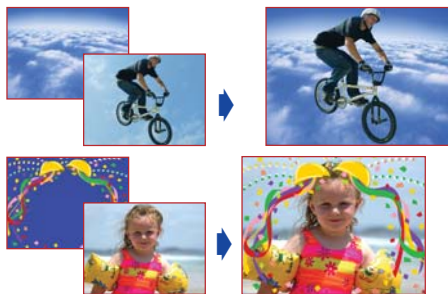
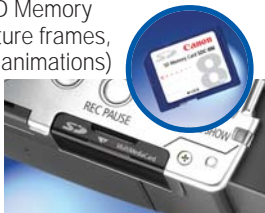
\*The Analog to Digital Converter may not function depending on the software used.





## SD Memory Card and MultiMediaCard

The MVX250i and MVX200i expand video possibilities with a built-in slot for an SD (Secure Digital) Memory Card or a MultiMediaCard, in addition to a MiniDV cassette. Easily transfer images to your PC directly from the camcorder using USB and IEEE1394. Produce effects not possible with just a cassette using the Card Mix Effects. Choose one of the sample images provided on the supplied SD Memory Card (such as picture frames, backgrounds and animations) and combine it with the live video recording.



**SD MultiMediaCard**

## 1.33 Megapixel\* High Resolution Photos

The camcorders feature advanced image processing, for capturing stunning, 1.33 Megapixel (1280 x 960 pixels) photos onto the included memory card. They may be captured at a variety of different image qualities and compression sizes (Superfine/Fine/Normal).



\* Total pixels

## Motion JPEG

You can record movie clips in Motion JPEG format onto the memory card, for clear images and smooth playback. You may choose to record in 320 x 240 pixels or 160 x 120 pixels. Best of all, you can record for the full length of the SD Memory Card\*. If you like, you can even copy video from the Mini DV tape to the card, making it easy to attach a mini-movie to an e-mail or post on the web.



\*When using MultiMediaCards, movie clips are limited to 10 seconds in 320 x 240 and 30 seconds in 160 x 120.

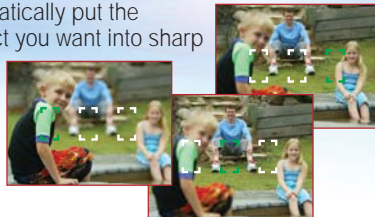
## High Resolution 16:9 Widescreen Mode

You can record high-resolution video in the 16:9 format for playback on widescreen TVs. Unlike systems which simply record a vertically stretched picture, the MVX250i and MVX200i use the full width of the CCD, retaining image quality and providing a larger horizontal angle of view at the wide end.



## Selectable Focusing Points

Sometimes, the subject we want to photograph is not in the center of the frame. Choose from one of three focusing points to automatically put the subject you want into sharp focus.



## Simultaneous Photo Recording

While recording video, the camcorders are able to simultaneously capture VGA quality (640 x 480 pixels) digital photos onto a memory card. This is perfect for those who want to capture e-mail ready photos, without interruption.

## Direct Print Choices

The camcorders offer flexible connectivity with a variety of printers. Connect your camcorder to any Canon CP-Series Card Photo Printer or Canon Bubble Jet Direct Printer, without even connecting a computer. A single cable connects the printer to the camcorder and you can perform trimming and other functions right from the camcorder. Choose from a range of different paper sizes with options for borderless or bordered prints. The camcorders can also connect to any PictBridge compliant printer.



**PictBridge**



## Exif Print

The camcorders support Exif Print (2.2), a worldwide standard that enhances communication between digital cameras and printers. At the time of shooting, vital camcorder settings and scene data are recorded with the image, resulting in realistic and reliable color reproduction. Poor lighting or mistakes can also be corrected, allowing photos to be even better than the originals.



## Continuous Shooting Mode

The camcorders feature a continuous shooting mode, allowing you to capture a rapid succession of 1.33 Megapixel photos. Choose from normal-speed (3 frames per second) or high-speed (5 frames per second) continuous shooting. This function is linked with the flash of the optional VFL-1, so continuous shooting is possible even in dark locations.

## Auto Exposure Bracketing

This feature allows you to record three photos (normal, underexposed and overexposed) simply by pressing the PHOTO button once.





## Advanced Accessory Shoe (MVX250i)

Want to add an accessory microphone or video light? Simply slide Canon's VFL-1 Video Flash Light, DM-50 Directional Stereo Microphone or VL-3 Video Light into the accessory shoe; the camcorder will automatically provide power and connections. No external power or cables are required.



VFL-1 Flash ON



VFL-1 Flash OFF

## Digital Effects

Show your creativity by using the special effects and digital faders available with the camcorders. A wide selection of faders and special effects will add visual appeal and greater imaging variety.



### Faders

Add a variety of transitions to your movies with a fade to or from black. Choose from Fade Trigger, Wipe, Corner, Jump, Flip, Puzzle, Zigzag, Beam and Tide.



### Special Effects

For a more creative look, you can switch on the following digital effects during recording or playback: Art, Black & White, Sepia, Mosaic, Ball, Cube, Wave, Color Mask or Mirror.

\* In Card mode: Only black and white is available.



### Multi-image Screen

Divide your screen into four, nine or sixteen pictures with the Image Capture function. You can choose the speed at which the images are captured: Manual, Slow, Moderate or Fast.



### StitchAssist

By using the StitchAssist Mode, you can create magnificent panoramas. Shoot your landscape, and transfer them to your computer. Then simply select and arrange your images in the correct order, and the supplied PhotoStitch software does the rest, aligning, overlapping and cropping the separate images to form one ultra-wide panoramic still image.



## My Camera Function

Personalize your camcorder by customizing the start-up image and camcorder operation sounds. You can also choose a start-up image from the included software CD or use your own digital recordings.



## End Search

Use this function to locate the end of the last recorded scene. The camcorder fast-forwards the tape, plays back the last few seconds of the recording and stops the tape.

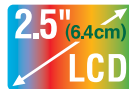
## Selectable Display Languages

You can choose from the following languages: English, French, Spanish, German, Italian, Russian, Chinese and Japanese. The date format can also be selected.



## Flexible LCD View Screen and Color Viewfinder

The bright 2.5" LCD view screen makes it easy to compose sensational shots without having to squint into the viewfinder. You can rotate the screen for high-or low-angle shots, or turn it around 180° to record yourself. When you're done shooting, the screen is perfect for reviewing your scenes.



- Lithium Ion Battery
- S-Video Input/Output
- Microphone Terminal (MVX250i)
- Remote Control Included
- Built-in Speaker
- Audio Dubbing
- Self-Timer
- Date Search
- Time Code/Data Code
- Record Search & Review
- Confirmation Beep
- Zero Set Memory
- World Clock





## Optional Accessories

### Lithium Ion Battery Packs

Extra batteries for use with the camcorders.

| Battery pack              | Maximum recording time using viewfinder | Maximum recording time using LCD screen |
|---------------------------|---|---|
| NB-2L (single-capacity)   | 1 hr. 35 min.                           | 1 hr. 15 min.                           |
| NB-2LH (single-capacity)  | 1 hr. 35 min.                           | 1 hr. 30 min.                           |
| BP-2L12 (single-capacity) | 3 hr. 20 min.                           | 2 hr. 30 min.                           |
| BP-2L14 (double-capacity) | 4 hr.                                   | 3 hr. 10 min.                           |

### CB-2LT Battery Charger

Use the battery charger for charging the battery packs. It plugs directly into a power outlet without a cable.

### CBC-NB2 Car Battery Charger

Use the car battery charger to charge battery packs on the move.

### VFL-1 Video Flash Light\*\*\*

Attaches to the Advanced Accessory Shoe for cable-free operation. As a video light, it can turn on and off automatically. As a flash, it can fire automatically or act as a pre-flash to reduce the red-eye effect.

### S-150 S-Video Cable

### VL-3 Video Light\*\*\*

This 3 W light attaches to the Advanced Accessory Shoe for cable-free operation. Continuous on and auto on/off settings. Powered by the camcorder's power source.

### DM-50 Directional Stereo Microphone\*\*\*

Attaches to the Advanced Accessory Shoe for cable-free operation. Picks up shotgun or shotgun + surrounding sound. Powered by the camcorder's power source. Wind shields included.

### TL-H34 Tele-converter

Increases the focal length by 1.5x. Image resolution may be lower at the telephoto-side.

### VL-10Li Battery Video Light

Powerful 10 W illumination. A BP-900 series battery attaches directly, so operation is cable-free.\*\*

### WD-H34 Wide-converter

Increases the wide angle coverage by 0.7x.

### FS-34U Filter Set

Includes neutral density (ND 8) filter and MC protector.

### WS-20 Wrist Strap

### SC-2000 Soft Carrying Case

### SC-1000 Soft Carrying Case

### SC-A50 Soft Carrying Case

### DVM-E60/DVM-E80 Digital Video Cassette

### DVM-CL Digital Video Head Cleaning Cassette



This mark identifies genuine Canon video accessories. When you use Canon video equipment, we recommend Canon-brand accessories or products bearing the same mark.

Availability differs from area to area.

\* Cannot be used to power the camcorder directly.

\*\* A 900 series charger is required.

\*\*\* MVX250i only.

## Specifications

|   |   |
|---|---|
| <b>Video Recording System</b>               | 2 rotary heads, helical scanning DV system (consumer digital VCR SD system), digital component recording  |
| <b>Audio Recording System</b>               | PCM digital sound: 16 bit (48 kHz/2ch): 12bit (32 kHz/4ch)  |
| <b>Television System</b>                    | CCIR standard (625 lines, 50 fields) PAL color signal   |
| <b>Image Sensor</b>                         | 1/4.5-inch CCD, approx. 1,330,000 pixels<br>Effective pixels: tape approx. 860,000 pixels<br>card approx. 1,230,000 pixels                                    |
| <b>Tape Format</b>                          | Videocassettes bearing the "MiniDV" mark  |
| <b>Tape Speed</b>                           | SP: 0.74 ips (18.83 mm/s), LP: 0.49 ips (12.57 mm/s)  |
| <b>Maximum Recording (60 min. cassette)</b> | SP: 80 min., LP: 120 min.   |
| <b>Fast Forward/Rewind</b>                  | Approx. 2 min. 20 sec. (60 min. cassette)   |
| <b>LCD screen</b>                           | 2.5-inch TFT color, approx. 123,000 pixels  |
| <b>Viewfinder</b>                           | 0.33-inch TFT color, approx. 113,000 pixels   |
| <b>Microphone</b>                           | Stereo electret condenser microphone  |
| <b>Lens</b>                                 | MVX250i: f=3.5-6.3, f/1.8-3.4,<br>18x optical zoom<br>MVX200i: f=3.5-4.9, f/1.8-3.1,<br>14x optical zoom  |
| <b>Lens Configuration</b>                   | 10 elements in 8 groups   |
| <b>Filter Diameter</b>                      | 34 mm   |
| <b>AF System</b>                            | TTL autofocus, manual focusing possible   |
| <b>Minimum Focusing Distance</b>            | 1 m (3.3 ft); 1 cm (0.39 in.) on maximum wide angle   |
| <b>White Balance</b>                        | Auto white balance, pre-set white balance (indoor, outdoor) or custom white balance   |
| <b>Minimum Illumination</b>                 | 1.5 lx (using the Night mode)   |
| <b>Recommended Illumination</b>             | More than 100 lx  |
| <b>Maximal Shutter Speed</b>                | 1/2000 (1/250 in CARD CAMERA mode)  |
| <b>Image Stabilization</b>                  | Electronic  |
| <b>AV Terminal</b>                          | ø3.5 mm stereo mini-jack<br>Video: 1 Vp-p/75 ohms unbalanced<br>Audio output: -10 dBV (47 kohm load)/3 kohms or less<br>Audio input: -10 dBV/40 kohms or more |
| <b>DV Terminal</b>                          | Special 4-pin connector (IEEE1394 compliant)  |
| <b>S-video Terminal</b>                     | 1 Vp-p/75 ohms (Y signal), 0.286 Vp-p/75 ohms (C signal)  |
| <b>Microphone Terminal (MVX250i)</b>        | ø3.5 mm stereo mini-jack<br>-57 dBV (with 600 ohm mic)/5 kohms or more  |
| <b>Headphone Terminal</b>                   | ø3.5 mm stereo mini-jack  |
| <b>Power supply (rated)</b>                 | 7.4 V DC  |

|  |  |
|--|--|
| <b>Power consumption (AF on)</b>                   | 2.6 W (using viewfinder), 3.3 W (using LCD screen)   |
| <b>Operating temperature</b>                       | 0 - 40° C (32 - 104° F)  |
| <b>Recording media</b>                             | SD Memory Card, MultiMediaCard   |
| <b>Number of recording pixels</b>                  | Still image: 1280 x 960 pixels, 640 x 480 pixels<br>Movie: 320 x 240 pixels, 160 x 120 pixels  |
| <b>File format</b>                                 | Design rule for Camera File system (DCF),<br>Exif 2.2 compliant, Digital Print Order Format (DPOF) compliant (only images marked for printing or transfer)   |
| <b>Image recording format</b>                      | Still image: JPEG (compression: Superfine/<br>Fine/Normal)<br>Movie: AVI (image data: Motion JPEG; audio data: WAVE (monaural))  |
| <b>Estimated SD Memory Card SDC-8M capacities*</b> | 1280 x 960: Superfine 6 images/Fine 10 images/Normal 18 images, 640 x 480: Superfine 34 images/Fine 50 images/Normal 84 images<br>*The actual number varies depending on the images. Sample images recorded on the supplied SD Memory Card are to be included in the total number. |
| <b>USB terminal</b>                                | mini-B (USB 2.0 compliant)   |
| <b>Dimensions</b>                                  | 78 x 74 x 130 mm, excluding protrusions  |
| <b>Weight (camcorder body only)</b>                | approx. 500g   |

### System requirements for supplied software

#### Digital Video Software

Interface: USB: only preinstalled Windows 98/Windows Me/Windows 2000/Windows XP systems with built-in USB ports, or only systems equipped with genuine Apple-brand built-in USB interfaces.

| Operating System | CPU  | RAM  |
|------------------|--|--|
| Windows          | Windows 98/<br>Windows Me/<br>Windows 2000           | 150MHz or better<br>64MB or more                                   |
| Macintosh        | Windows XP<br>Mac OS 9.0-9.2<br>Mac OS X (10.1/10.2) | 300MHz or better<br>128MB or more<br>64MB or more<br>128MB or more |

#### Free hard disk space

|           |   |   |
|-----------|---|---|
| Windows   | ZoomBrowser EX<br>PhotoStitch<br>DV TWAIN Driver<br>DV WIA Driver | 200MB or more<br>40MB or more<br>25MB or more<br>25MB or more |
| Macintosh | ImageBrowser<br>PhotoStitch                                       | 120MB or more<br>30MB or more                                 |

#### DV Network Software

Interface: IEEE1394: only preinstalled Windows XP Home Edition or Windows XP Professional systems with built-in IEEE1394 terminal

|                      |   |
|----------------------|---|
| CPU                  | 500 MHz or better (800 MHz or better recommended)                                   |
| RAM                  | 128 MB or more (256 MB or more recommended)   |
| Free Hard Disk Space | AV/C Camera Storage Subunit-WIA Driver 1 MB or more<br>DV Messenger2 100 MB or more |
| Other                | Windows Messenger Version 4.5/4.6/4.7   |

- To use DV Messenger, it is required that Windows Messenger 4.5/4.6/4.7 operates correctly.
- It is required that Windows Messenger operates and the voice or video conversation can be used with a digital camcorder. Please consult Microsoft for details.
- If you are using a router, make sure it is an UPnP (Universal Plug and Play) compatible router. For details, consult your Internet service provider, telephone carrier, or refer to the manual of the router.
- We recommend using a broadband Internet connection.
- The communication quality and connectivity depend on the congestion of the Internet line and service.
- This product does not guarantee a certain communication quality.

## THE CANON MVX250i/MVX200i KIT



- MVX250i or MVX200i
- NB-2LH Battery Pack
- CA-570 Compact Power Adapter
- STV-250N Stereo Video Cable
- SS-900 Shoulder Strap
- WL-D83 Wireless Controller
- SDC-8M SD Memory Card
- IFC-300PCU USB Cable
- DIGITAL VIDEO SOLUTION DISK for Windows
- DIGITAL VIDEO SOLUTION DISK for Macintosh
- PC-A10 SCART Adapter

Errors and omissions excepted.

Weight and dimensions are approximate.

Subject to change without notice.

Macintosh is a trademark of Apple Computer Inc., registered in the United States and other countries. Microsoft® and Windows® are either registered trademarks or trademarks of Microsoft Corporation in the United States and/or other countries. Other names and products not mentioned above may be registered trademarks or trademarks of their respective companies. SD Logo is a trademark. Canon is a registered trademark of Canon Inc.

Warning: Unauthorized recording of copyrighted materials may infringe on the rights of copyright owners and be contrary to copyright laws.

# Canon

CANON HONGKONG CO., LTD.

9/F, The Hong Kong Club Building, 3A Chater Road, Central, Hong Kong

CANON SINGAPORE PTE. LTD.

1 HarbourFront Avenue, #04-01 Keppel Bay Tower, Singapore 098632

http://www.canon-asia.com