

# Canon

# Mini DV



Precision-Engineered  
Genuine Canon  
Video Lens

# MV6iMC

DIGITAL VIDEO CAMCORDER

## Travel Light, Travel Right™



# DiG!C DV

Actual Size



# Ultra-Compact Design...

Whether your travels take you to lush tropic rainforests, white sandy beaches, or busy marketplaces brimming with local color, Canon's MV6i **MC** camcorder is the one item that will never be left home. Its extreme portability means it travels wherever you do, so you'll never miss an opportunity. Superior picture quality allows you to relive all the sights and sounds of your trip, just as you remembered them, with rich, vibrant color, and crisp detail, without even leaving your living room. Although vacations can't last a lifetime, the Canon MV6i **MC** guarantees a journey back anytime you choose.

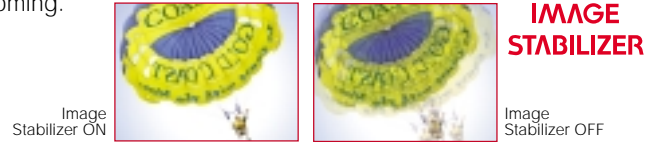
## DV Format

MiniDV is the new preferred format for personal and broadcast-quality video, highly regarded for its high audio and image quality. With up to 540 lines of horizontal resolution and minimum color noise, MiniDV delivers a 20% clearer picture than analog camcorder formats. All this, in a handy, super-compact cassette.



## Image Stabilizer

A high quality image stabilization system corrects camcorder shake instantly, so your videos always look smooth, steady and natural even when shooting hand-held at full telephoto. Canon's image stabilization system is even effective while panning and zooming.



# MV6i **MC**

Actual Size

## DIGIC DV

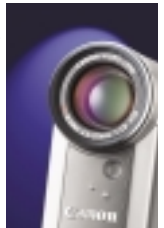
DIGIC DV is a system for achieving superior video and photographic images. Canon's expertise in imaging and electronics is flawlessly blended together, resulting in outstanding performance. It offers substantial benefits in color reproduction. DIGIC DV makes it possible to achieve accurate color for both video and digital photos. Since video and photos have different color requirements, DIGIC DV utilizes two different color techniques to maximize video quality on a TV and still image quality for print or computer display.

## VIC

Embracing the industry's latest and most sophisticated technology, Canon camcorders feature an exclusive connection circuit, called VIC. VIC is a virtual powerhouse. Traditionally, multiple chips were needed to perform the camcorder's input and output functions. However VIC manages it all with one single chip. The result is seamless connectivity whether you are connecting to a computer, TV, or VCR.

## Genuine Canon Optics: 10x Optical Zoom Lens (40-400x Digital Zoom)

What sets a Canon camcorder apart from all the others? It's the only camcorder made by a company renowned for high-quality professional optics. Our vast expertise in designing and crafting precision lenses for 35mm and broadcast TV cameras also goes into every camcorder lens we make. The MV6i **MC** optical zoom lens delivers superb definition and contrast, taking full advantage of the DV format. The digital zoom extends the camcorder's magnification revealing details too small to see with the naked eye.



# Unsurpassed Quality...

## XGA High Resolution Photos

The MV6i<sup>MC</sup> camcorder captures beautiful high definition photos. Just press the photo button to capture stunning XGA (1024 x 768 pixel) images onto the included 8 MB SD Memory Card. They may be captured at a variety of different image qualities and compression sizes (Superfine/Fine/Normal).



## Digital Photo Mode

For added flexibility, you may take up to 700 still images on a single MiniDV tape (in SP Mode). The camcorder records the photos for approximately 6 seconds, as well as recording the sound for your verbal notes or narration. You can search through the recorded tape for your photos using the supplied remote control.

## Video Mode

The MV6i<sup>MC</sup> utilizes high-precision optics, a premium image stabilization system, and the latest processing technology to deliver outstanding video in all situations.

## Motion JPEG

The MV6i<sup>MC</sup> lets you record short movie clips in Motion JPEG format onto the inserted memory card, for clear images and smooth playback. You may choose to record up to 10 seconds at 320 x 240 pixels or up to 30 seconds at 160 x 120 pixels.

## IEEE1394 DV Terminal

An IEEE1394-compliant DV terminal lets you connect the MV6i<sup>MC</sup> to a DV-compatible computer or another Canon DV camcorder. Transfer your digital movies to your computer's hard disk, edit your scenes, then use them to create high-impact Web sites, video e-mail, interactive CDs and DVDs, or a personal video album.



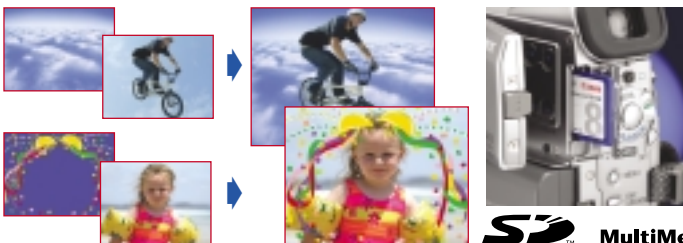
## Included Software

With **DV Messenger**, you can use your Canon camcorder for Internet Video Chat with Microsoft Windows Messenger through IEEE1394. Control the zoom and focus of your camcorder or the person you are chatting with. Preview thumbnails and transfer photos. Watch and control the video playback of either camcorder - all from your computer.



## SD Memory Card and MultiMediaCard

The MV6i<sup>MC</sup> expands video possibilities with a built-in slot for an SD (Secure Digital) Memory Card or a MultiMediaCard, in addition to a MiniDV cassette. You can also capture small movie clips to the memory card in Motion JPEG format. Easily transfer images to your PC directly from the camcorder using USB and IEEE1394. Produce effects not possible with just a cassette using the Card Mix Effects. Choose one of the sample images provided on the supplied SD Memory Card (such as picture frames and backgrounds) and combine it with the live video recording.



## USB Terminal

Allows high-speed transfer of images from your SD Memory Card or MultiMediaCard to your computer. By using the USB cable and software provided, you can process and organize your images on your PC.



## Included Software

The MV6i<sup>MC</sup> includes software for image management and editing: **ZoomBrowser EX** (Windows) and **ImageBrowser** (Macintosh) which let you easily download, browse, archive, and retouch your photos. Automatically resize images and attach them to e-mail, arrange them for printing, and add text.



# For the Ultimate Travel Experience

## Analog Line-In/Converter

You can send an analog video signal from a TV, VCR or a camcorder into the MV6iMG and record it onto a DV tape, or convert the analog signal into digital signal, for direct transfer to digital video devices or computers equipped with a IEEE1394 terminal\*.

\*The Analog to Digital Converter may not function depending on the software used.



## PCM Digital Sound

The MV6iMG offers two digital modes, 16-bit and 12-bit. You can select 16-bit mode for high-quality, CD-equivalent stereo sound, or 12-bit to record only two of four channels, leaving two channels free for you to record additional sound later.

**PCM  
STEREO**



## Manual Controls

The fully-automatic MV6iMG gives great results even in the hands of a novice, while experts will appreciate the manual focus, exposure, white balance and shutter speed controls.



## Direct Print Choices

Connect your camcorder to a Canon Card Photo Printer CP-10 or a Canon Bubble Jet Direct Printer, without even connecting a computer. A single cable connects the printer to your MV6iMG, and you can perform trimming and other functions right from the camcorder. Choose from a range of different paper sizes with options for borderless or bordered prints.



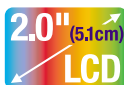
## Exif Print

The MV6iMG supports Exif Print (2.2), a worldwide standard that enhances communication between digital cameras and printers. At the time of shooting, vital camcorder settings and scene data are recorded with the image, resulting in realistic and reliable color reproduction. Poor lighting or mistakes can also be corrected, allowing photos to be even better than the originals.



## Flexible LCD View Screen and Color Viewfinder

The bright 2.0" LCD view screen makes it easy to compose sensational shots without having to squint into the viewfinder. You can rotate the screen for high- or low-angle shots, or turn it around 180° to record yourself. When you're done shooting, the screen is perfect for reviewing your scenes.



## AE Shift

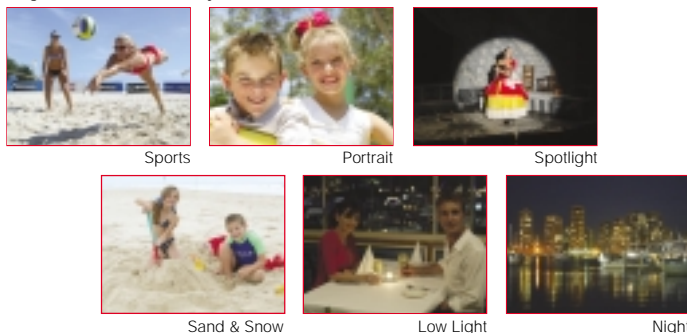
This function lets you control how dark or light the camcorder sets the Auto Exposure level.

## Program Auto Exposure

While the Easy Recording mode is fine for most shooting situations, the camcorder also includes additional pre-programmed auto exposure modes (Auto, Sports, Portrait, Spotlight, Sand & Snow, Low Light and Night mode), each carefully designed to give you the best possible image results under special shooting conditions. In situations normally too dark for recording, the camcorder uses the Night mode to select the ideal shutter speed and sensitivity combination to brighten up the scene, without sacrificing color.

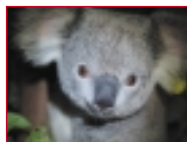


\*Night mode is available only in CAMERA mode.



## Super Night Mode and Low Light Plus Mode

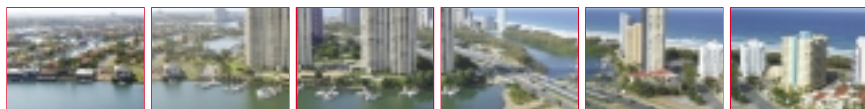
Even when the light has faded, you can keep on shooting with the MV6iMG's Super Night mode (in CAMERA mode) and Low Light Plus mode (in CARD CAMERA mode). The assist lamp lights up to illuminate the subject allowing you to capture the action without turning the lights on.



Low Light Plus

## StitchAssist

By using the StitchAssist Mode, you can create magnificent panoramas. Shoot your landscape, and transfer them to your computer. Then simply select and arrange your images in the correct order, and the supplied PhotoStitch software does the rest, aligning, overlapping and cropping the separate images to form one ultra-wide panoramic still image.



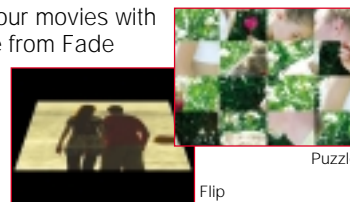
## Digital Effects

Show your creativity by using the special effects and digital faders available with the MV6iMG. A wide selection of faders and special effects will add visual appeal and greater imaging variety.



### Faders

Add a variety of transitions to your movies with a fade to or from black. Choose from Fade Trigger, Wipe, Corner, Jump, Flip, Puzzle, Zigzag, Beam and Tide.



Puzzle

### Special Effects

For a more creative look, you can switch on the following digital effects during recording or playback: Art, Black & White, Sepia, Mosaic, Ball, Cube, Wave, Color Mask or Mirror.

\* In Card mode: Only black and white is available.

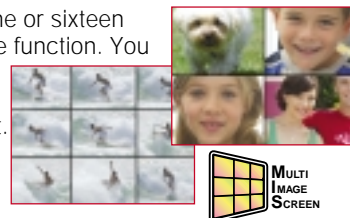


Cube

Ball

### Multi-image Screen

Divide your screen into four, nine or sixteen pictures with the Image Capture function. You can choose the speed at which the images are captured: Manual, Slow, Moderate or Fast.



- Lithium Ion Battery
- S-Video Input/Output
- Microphone Terminal
- Remote Control Included
- Built-in Speaker
- Superb Playback Function
- 16:9 Wide Screen Mode
- AV Insert and Audio Dubbing
- Self-Timer
- Photo Search/Date Search
- Time Code/Data Code
- Record Search & Review
- Confirmation Beep
- Zero Set Memory
- World Clock
- LANC Terminal\*

\* Connect only equipment bearing the LANC symbol.



## Optional Accessories

### Lithium Ion Battery Packs

Extra batteries for use with the camcorders.

Battery pack	Maximum recording time	
	using viewfinder	using LCD screen
NB-2L (supplied)	80 min.	60 min.
BP-2L12 (optional)	170 min.	125 min.

### CBC-NB2 Car Battery Charger

Use this handy charger to charge NB-2L/BP-2L12 batteries from your car's cigarette lighter socket.

### Adapter Bracket SA-1

This bracket lets you attach an external microphone or VL-10Li video light.

### TL-28 Tele-converter

Increases focal length by 1.7x.

### WD-28 Wide-converter

Gives wide-angle coverage at 0.7x.

### VL-10Li Battery Video Light

Powerful 10 W illumination. A BP-900 series battery attaches directly, so operation is cable-free.\*

### SC-A40 Soft Carrying Case

SC-1000 Soft Carrying Case

### Zoom Remote Controller ZR-1000

Connect it to the LANC terminal of the camcorder to remotely control functions such as start/stop, zoom and focusing while the camcorder is mounted on a tripod.

DVM-E60/DVM-E80 Digital Video Cassette

DVM-CL Digital Video Head Cleaning Cassette



This mark identifies genuine Canon video accessories. When you use Canon video equipment, we recommend Canon-brand accessories or products bearing the same mark.

Availability differs from area to area. \* A 900 series charger is required.

## Specifications

<b>Power supply (rated)</b>	7.4 V.DC
<b>Power consumption</b>	Using viewfinder: 3.1 W Using LCD screen: 4.1 W
<b>Television system</b>	CCIR standard (625 lines, 50 fields) PAL color signal
<b>Video recording system</b>	2 rotary heads, helical scanning system DV system (Consumer digital VCR SD system) Digital component recording.
<b>Audio recording system</b>	Tape: PCM digital sound: 16 bit (48kHz/2ch), 12 bit (32kHz/4ch) Card: ADPCM digital sound: 16 bit (16kHz/1ch), 4bit
<b>Image sensor</b>	1/4" CCD (charge coupled device) approx. 800,000 pixels (effective pixels; tape: approx. 420,000 pixels, card: approx. 740,000 pixels)
<b>Tape format</b>	Video cassettes bearing the (MiniDV) mark
<b>Tape speed</b>	SP: 18.83 mm/s (0.74 ips) LP: 12.57 mm/s (0.49 ips)
<b>Maximum recording time (with an 80 min. cassette)</b>	SP: 80 min., LP: 120 min.
<b>Fast forward/rewind time</b>	2 min. 20 sec. (with a 60 min. cassette)
<b>Lens</b>	F1.8-2.3, 10x power zoom, f=2.5-25 mm (7.5x power zoom, 3.3-25 mm in CARD CAMERA mode)
<b>Focusing system</b>	TTL autofocus, manual focusing possible
<b>Minimum focusing distance</b>	3.3 ft. (1 m), 0.39 in. (1 cm) on maximum wide angle
<b>Maximum shutter speed</b>	1/2500 (1/500 when using a memory card)
<b>Minimum illumination</b>	2.4 lx using the Night mode during tape recording
<b>Recommended illumination</b>	More than 100 lx
<b>Filter diameter</b>	28 mm
<b>Viewfinder</b>	0.5 inch, color LCD (approx. 113,000 pixels)
<b>LCD screen</b>	2 inch measured diagonally (approx. 130,000 pixels)
<b>Microphone</b>	Stereo electret condenser microphone
<b>Recording media</b>	SD Memory Card, MultiMediaCard
<b>Number of recording pixels</b>	Still image: 1024 x 768 pixels, 640 x 480 pixels Movie: 320 x 240 pixels (approx. 10 sec.), 160 x 120 pixels (approx. 30 sec.) *The figures in brackets represent the maximum length of one movie clip.
<b>File format</b>	Design rule for Camera File system (DCF), Exif 2.2 compliant, Digital Print Order Format (DPOF) compliant (only images marked for printing)

<b>Image format</b>	Still image: JPEG (compression mode: Superfine/Fine/Normal) Movie: Motion JPEG
<b>Estimated SD Memory Card SDC-8M capacities*</b>	1024 x 768: Superfine 14 images/Fine 20 images/Normal 39 images, 640 x 480: Superfine 35 images/Fine 52 images/Normal 86 images *The actual number varies depending on the images. Sample images recorded on the supplied SD Memory Card are to be included in the total number.
<b>USB terminal</b>	mini-B
<b>DV terminal input/output</b>	Special 4 pin connector (based on IEEE1394)
<b>Video terminal</b>	1 Vp-p/75 ohms unbalanced
<b>S-video terminal</b>	1 Vp-p (Y signal), 0.3 Vp-p (C signal)
<b>Audio terminal</b>	Input level: -10 dBV/at least 40 kohms, unbalanced; Output level: -10 dBV (47 kohms load), less than 3 kohms, unbalanced
<b>Operating temperature range</b>	0 - 40° C (32 - 104° F)
<b>Dimensions</b>	50 x 111 x 89 mm (2.0 x 4.4 x 3.5 in.)
<b>Weight</b>	380 g (13.4 oz.)

### System requirements for supplied software: DIGITAL VIDEO SOLUTION DISK

Interface: USB: only preinstalled Windows 98/Windows Me/Windows 2000/Windows XP systems with built-in USB ports, or only systems equipped with genuine Apple-brand built-in USB interfaces.

Operating System	CPU	RAM
Windows	Windows 98/Windows Me/Windows 2000	150MHz or better 64MB or more
	Windows XP	300MHz or better 128MB or more
Macintosh	Mac OS 9.0-9.2	PowerPC 20MB or more
	Mac OS X (10.1/10.2)	PowerPC 128MB or more
<b>Free hard disk space</b>		
Windows	ZoomBrowser EX	120MB or more
	PhotoStitch	40MB or more
	Canon Camera TWAIN Driver	25MB or more
	Canon Camera WIA Driver	25MB or more
Macintosh	ImageBrowser	50MB or more
	PhotoStitch	30MB or more

### DV NETWORK SOLUTION DISK

Interface: IEEE1394; only preinstalled Windows XP Home Edition or Windows XP Professional systems with built-in IEEE1394 terminal

CPU	500 MHz or better (800 MHz or better recommended)
RAM	128 MB or more (256 MB or more recommended)
Free Hard Disk Space	AV/C Camera Storage Subunit-WIA Driver 1 MB or more
Disk Space	DV Messenger 100 MB or more
Other	Windows Messenger Version 4.5/4.6/4.7

- To use DV Messenger, it is required that Windows Messenger 4.5/4.6/4.7 operates correctly.
- It is required that Windows Messenger operates and the videoconference function can be used with a digital camcorder. Please consult Microsoft for details.
- If you are using a router, make sure it is an UPnP (Universal Plug and Play) compatible router. For details, consult your Internet service provider, telephone carrier, or refer to the manual of the router.
- We recommend using a broadband Internet connection.
- The communication quality and connectivity depend on the congestion of the Internet line and service.
- This product does not guarantee a certain communication quality.

## THE CANON MV6iMG KIT



- MV6iMG
- NB-2L Battery Pack
- CB-2LTE Battery Charger
- CA-PS700 Compact Power Adapter
- WL-D77 Wireless Controller
- STV-250N Stereo Video Cable
- S-150 S-video Cable
- IFC-300PCU USB Cable
- SDC-8M SD Memory Card
- DIGITAL VIDEO SOLUTION DISK
- DV NETWORK SOLUTION DISK
- PC-A10 SCART Adapter

Errors and omissions excepted. Weight and dimensions are approximate. Subject to change without notice.

Macintosh is a trademark of Apple Computer Inc., registered in the United States and other countries. Microsoft® and Windows® are either registered trademarks or trademarks of Microsoft Corporation in the United States and/or other countries. Other names and products not mentioned above may be registered trademarks or trademarks of their respective companies. SD Logo is a trademark. Canon is a registered trademark of Canon Inc.

Warning: Unauthorized recording of copyrighted materials may infringe on the rights of copyright owners and be contrary to copyright laws.

# Canon

CANON HONGKONG CO., LTD.

9/F, The Hong Kong Club Building, 3A Chater Road, Central, Hong Kong

CANON SINGAPORE PTE. LTD.

79 Anson Road, #09-01/06, Singapore 079906

http://www.canon-asia.com